

Tafeln

Autor(en): **[s.n.]**

Objektyp: **Appendix**

Zeitschrift: **Eclogae Geologicae Helvetiae**

Band (Jahr): **63 (1970)**

Heft 2

PDF erstellt am: **24.09.2024**

Nutzungsbedingungen

Die ETH-Bibliothek ist Anbieterin der digitalisierten Zeitschriften. Sie besitzt keine Urheberrechte an den Inhalten der Zeitschriften. Die Rechte liegen in der Regel bei den Herausgebern.

Die auf der Plattform e-periodica veröffentlichten Dokumente stehen für nicht-kommerzielle Zwecke in Lehre und Forschung sowie für die private Nutzung frei zur Verfügung. Einzelne Dateien oder Ausdrucke aus diesem Angebot können zusammen mit diesen Nutzungsbedingungen und den korrekten Herkunftsbezeichnungen weitergegeben werden.

Das Veröffentlichen von Bildern in Print- und Online-Publikationen ist nur mit vorheriger Genehmigung der Rechteinhaber erlaubt. Die systematische Speicherung von Teilen des elektronischen Angebots auf anderen Servern bedarf ebenfalls des schriftlichen Einverständnisses der Rechteinhaber.

Haftungsausschluss

Alle Angaben erfolgen ohne Gewähr für Vollständigkeit oder Richtigkeit. Es wird keine Haftung übernommen für Schäden durch die Verwendung von Informationen aus diesem Online-Angebot oder durch das Fehlen von Informationen. Dies gilt auch für Inhalte Dritter, die über dieses Angebot zugänglich sind.

Plate I

- Fig. 1 *Coccolithus tritus* n. sp. Holotype A 604 225 [A 810], 15000×, distal view, Red Bluff Fm., 4' above base, Alabama.
- Fig. 2 *Coccolithus crater* n. sp. Holotype A 809 004 [A 808], 15000×, distal view, Marianna Ls., 9' above base, Alabama.
- Fig. 3 *Coccolithus primalis* n. sp. Holotype J 506 377 [A 809], 15000×, distal view, JOIDES Hole 5, 374' below top, Blake Plateau, W Atlantic.
- Fig. 4 *Ericsonia bireticulata* n. sp. Paratype JS 1847 026 [A 812], 15000×, proximal view, Ciperó Fm., Trinidad.
- Fig. 5 *Ericsonia bireticulata* n. sp. Holotype JS 147 301 [A 811], 15000×, distal view, Ciperó Fm., Trinidad.
- Fig. 6 *Ericsonia fenestrata* (DEFLANDRE & FERT) STRADNER. Hypotype JS 1847 624 [A 813], 15000×, distal view, Ciperó Fm., Trinidad.

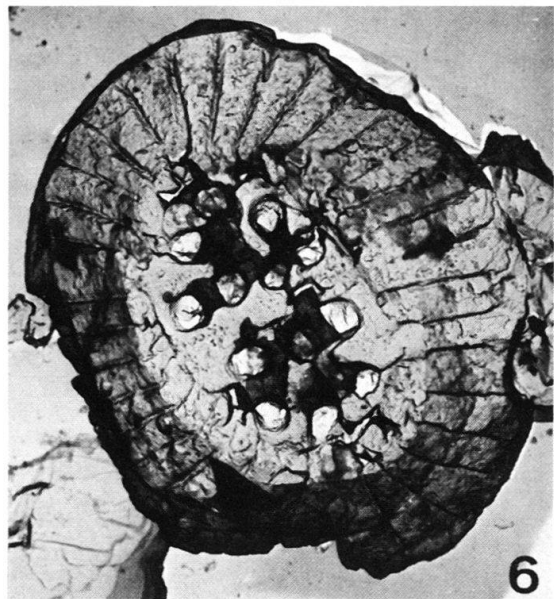
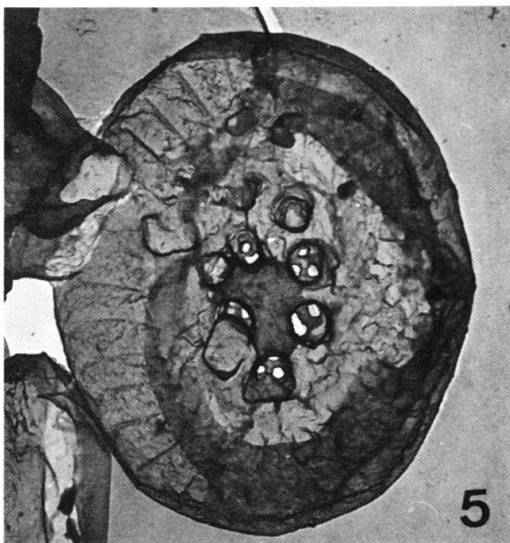
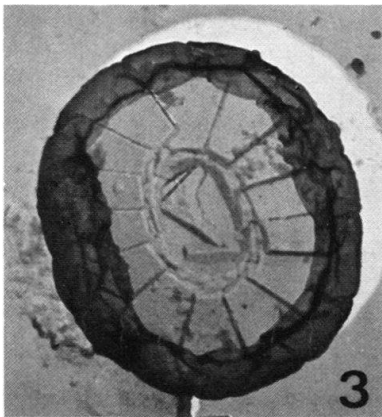
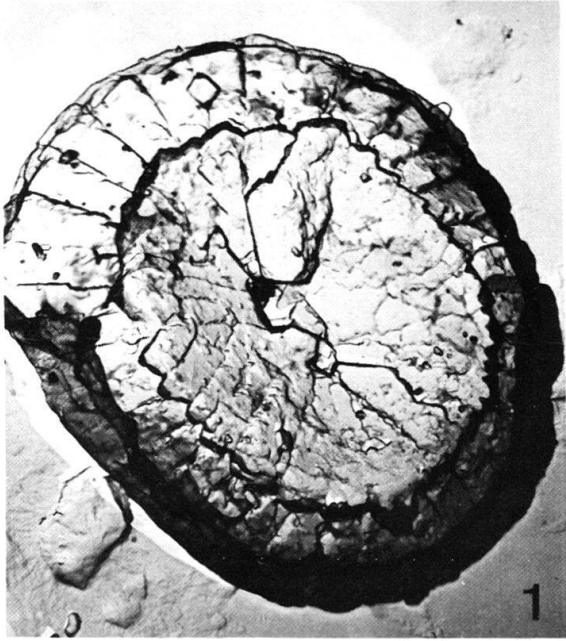


Plate II

- Fig. 1 *Ericsonia pauciperforata* n. sp. Holotype A 608 157 [A 814], 15000 \times , distal view, Red Bluff Fm., 8' above base, Alabama.
- Fig. 2 *Ericsonia quadriperforata* n. sp. Holotype J 515 234 [A 815], 15000 \times , distal view, JOIDES Hole 5, 589'11" below top, Blake Plateau, W Atlantic.
- Fig. 3 *Ericsonia subdisticha* (ROTH & HAY) ROTH. Hypotype J 515 374 [A 816], 15000 \times , distal view, JOIDES Hole 5, 589'11" below top, Blake Plateau, W Atlantic.
- Fig. 4 *Ericsonia subdisticha* (ROTH & HAY) ROTH. Hypotype N1 247 [A 817], 15000 \times , proximal view, Latdorf Clay, Well Hankensbüttel Süd 32, 267–276 m, Northern Germany.
- Fig. 5 *Cruciplacolithus flavius* n. sp. Paratype J 503 229 [A 819], 15000 \times , proximal view, JOIDES Hole 5, 484' below top, Blake Plateau, W Atlantic.
- Fig. 6 *Cruciplacolithus flavius* n. sp. Holotype J 504 107 [A 818], 15000 \times , distal view, JOIDES Hole 5, 445' below top, Blake Plateau, W Atlantic.

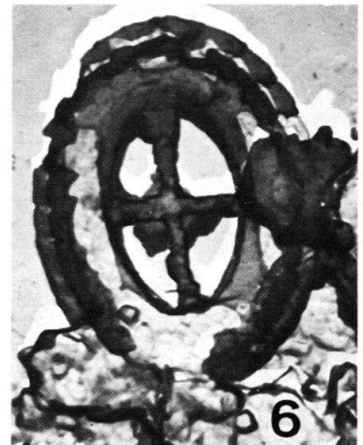
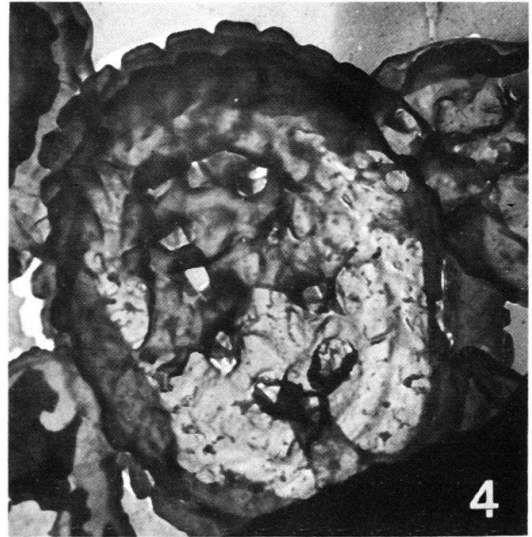
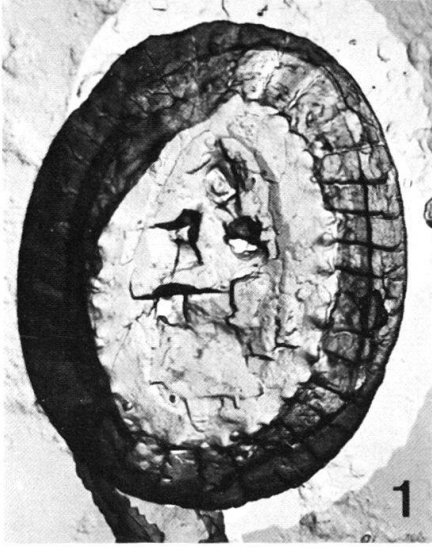


Plate III

- Fig. 1 *Cruciplacolithus quader* n. sp. Holotype J 504 101 [A 820], 15000 \times , distal view, JOIDES Hole 5, 445' below top, Blake Plateau, W Atlantic.
- Fig. 2 *Sollasites tardus* n. sp. Paratype J 510 471 [A 822], 15000 \times , proximal view, JOIDES Hole 5, 248' below top, Blake Plateau, W Atlantic.
- Fig. 3 *Sollasites tardus* n. sp. Holotype J 505 427 [A 821], 15000 \times , distal view, JOIDES Hole 5, 410' below top, Blake Plateau, W Atlantic.
- Fig. 4 *Reticulofenestra alabamensis* n. sp. Holotype A 600 360 [A 823], 15000 \times distal view, Red Bluff Fm., base, Alabama.
- Fig. 5 *Reticulofenestra alabamensis* n. sp. Paratype A 600 257 [A 824], 15000 \times , proximal view, Red Bluff Fm., base, Alabama.
- Fig. 6 *Reticulofenestra bisecta* (HAY, MOHLER & WADE) n. comb. Hypotype J6-397-12-7 [A 825], 5200 \times , proximal view. (In the upper and lower left *Sphenolithus pre-distentus* BRAMLETTE & WILCOXON.) JOIDES Hole 6, 397' below top, Blake Plateau, W Atlantic.

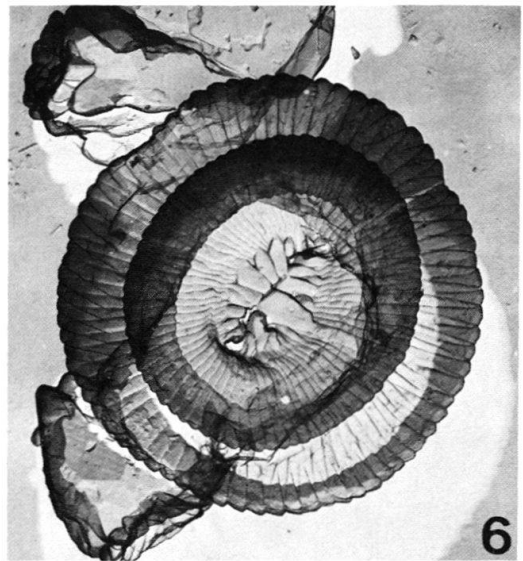
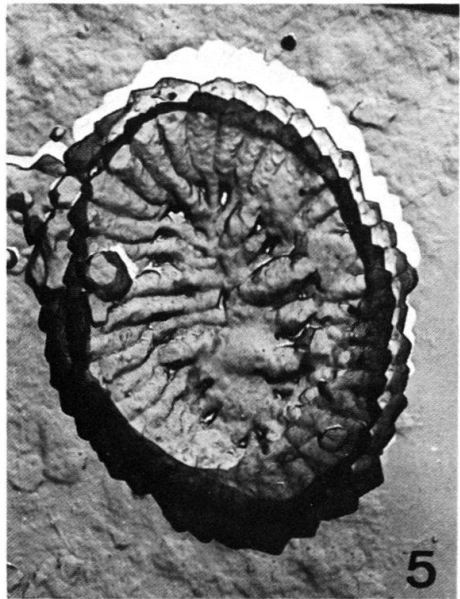


Plate IV

- Fig. 1 *Reticulofenestra gabriellae* n. sp. Holotype A 613 110 [A 827], 15000 \times , broken coccosphere, Red Bluff Fm., 13' above base, Alabama.
- Fig. 2 *Reticulofenestra danica* (BLACK) n. comb. Hypotype J 512 389 [A 826], 10000 \times , distal view JOIDES Hole 5, 730' below top, Blake Plateau, W Atlantic.
- Fig. 3 *Reticulofenestra hesslandii* (HAQ) n. comb. Hypotype A 600 470 [A 830], 15000 \times , proximal view, Red Bluff Fm., base, Alabama.
- Fig. 4 *Reticulofenestra hesslandii* (HAQ) n. comb. Hypotype A 815 110 [A 823], 10000 \times , coccosphere, Marianna Ls., 15' above base, Alabama.
- Fig. 5 *Reticulofenestra hesslandii* (HAQ) n. comb. Hypotype A 600 406 [A 829], 10000 \times , (A) specimen in the lower left, distal view, (B) specimen in the upper right, proximal view, Red Bluff Fm., base, Alabama.

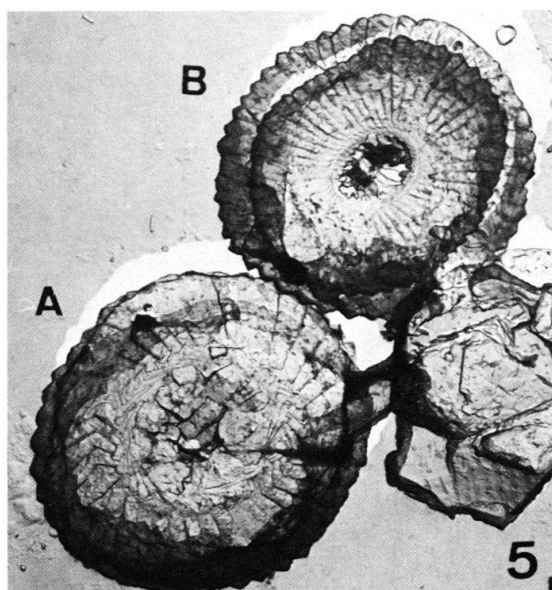
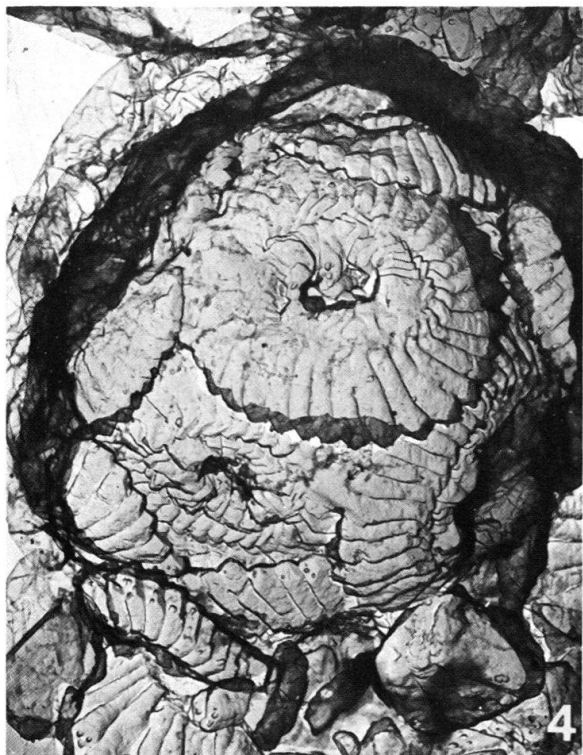
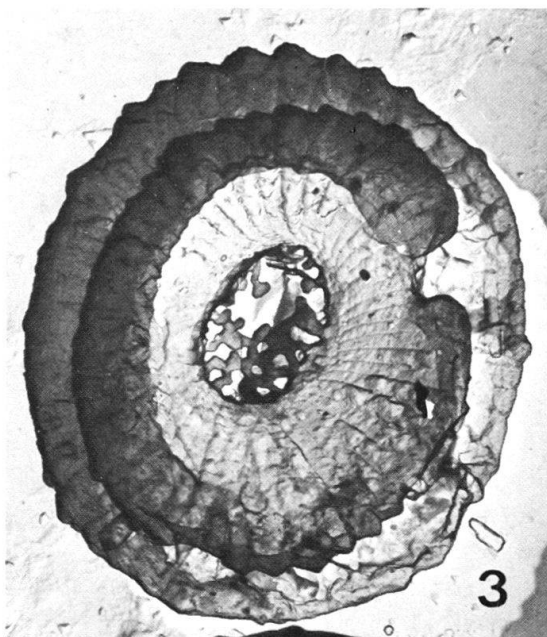
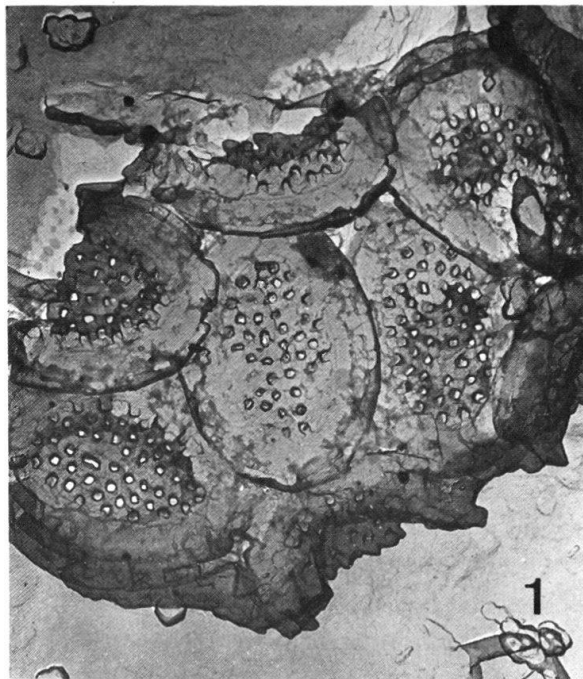


Plate V

- Fig. 1 *Reticulofenestra pectinata* n. sp. Holotype A 613 664 [A 835], 15000 \times , distal view, Red Bluff Fm., 13' above base, Alabama.
- Fig. 2 *Reticulofenestra inclinata* n. sp. Holotype J 503 480 [A 831], 15000 \times , JOIDES Hole 5, 484' below top, Blake Plateau, W Atlantic.
- Fig. 3 *Reticulofenestra minuta* n. sp. Holotype A 610 130 [A 833], 15000 \times , distal view, Red Bluff Fm., 10' from base, Alabama.
- Fig. 4 *Reticulofenestra minuta* n. sp. Paratype J 504 136 [A 834], 15000 \times , proximal view JOIDES Hole 5, 445' below top, Blake Plateau, W Atlantic.
- Fig. 5 *Reticulofenestra laevis* ROTH & HAY. Hypotype A 100 280 [A 832], 15000 \times , distal view, Byram Fm., unnamed Clay Mb., Alabama.
- Fig. 6 *Cyclococcolithus floridanus* (ROTH & HAY) n. comb. Hypotype J3-397-12-11 [A 840], 10000 \times , distal view, JOIDES Hole 3, 397' below top, Blake Plateau, W Atlantic.

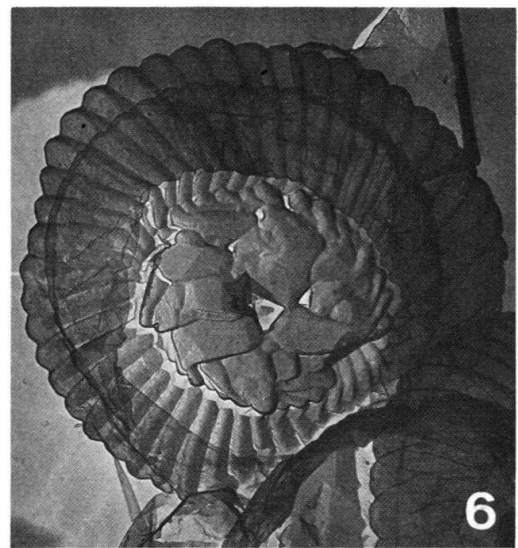
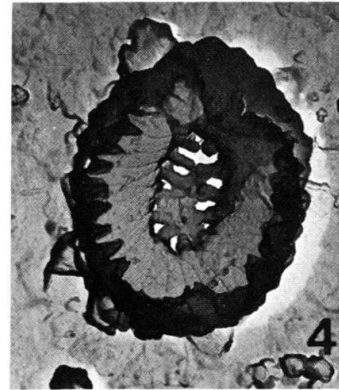
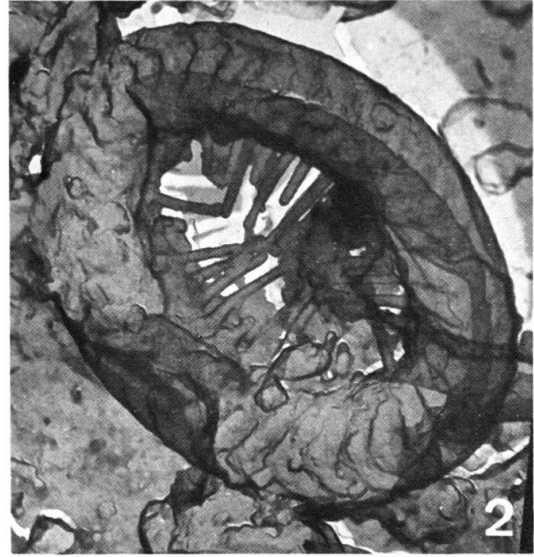
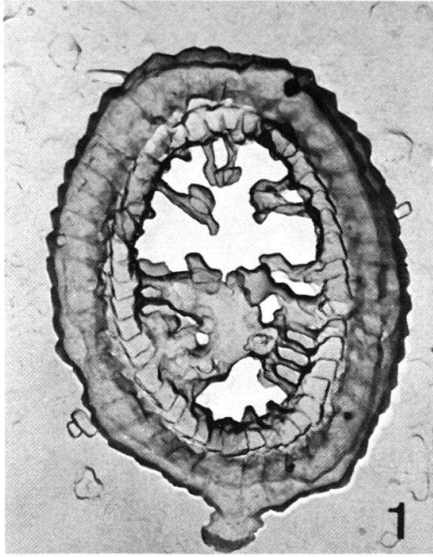


Plate VI

- Fig. 1 *Cyclococcolithus arabellus* n. sp. Holotype A 613 443 [A 836], 15000 \times , distal view, Red Bluff Fm., 13' above base, Alabama.
- Fig. 2 *Cyclococcolithus arabellus* n. sp. Paratype J 507 264 [A 837], 15000 \times , distal view, JOIDES Hole 5, 337'11" below top, Blake Plateau, W Atlantic.
- Fig. 3 *Cyclococcolithus ciproensis* n. sp. Holotype ETH 291 A-399 [A 838], 10000 \times , proximal view, Cipro Fm., Trinidad.
- Fig. 4 *Cyclococcolithus lunulus* n. sp. Holotype J 518 099 [A 841], 6000 \times , distal view, JOIDES Hole 5, 460'5 $\frac{1}{2}$ " below top, Blake Plateau, W Atlantic.
- Fig. 5 *Cyclococcolithus kingi* n. sp. Paratype A 606 025 [A 43], 10000 \times , proximal view, Red Bluff Fm., 6' above base, Alabama.
- Fig. 6 *Cyclococcolithus ciproensis* n. sp. Paratype ETH 291 A-510 [A 839], 12000 \times , distal view, Cipro Fm., Trinidad.

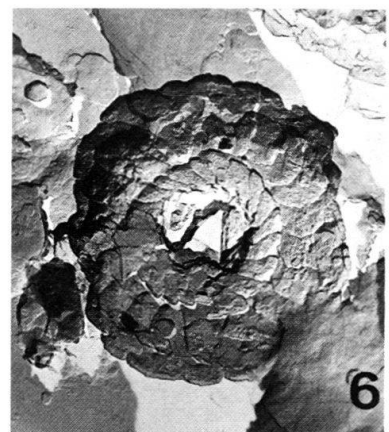
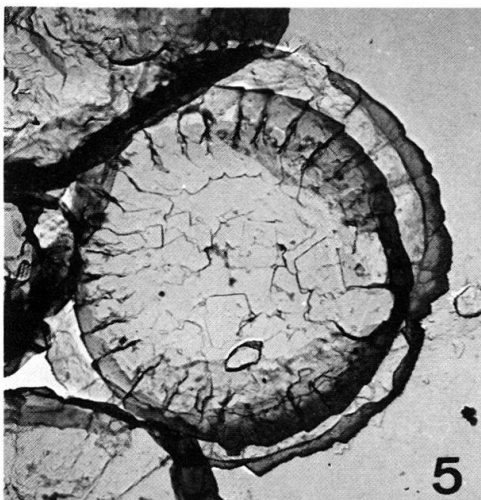
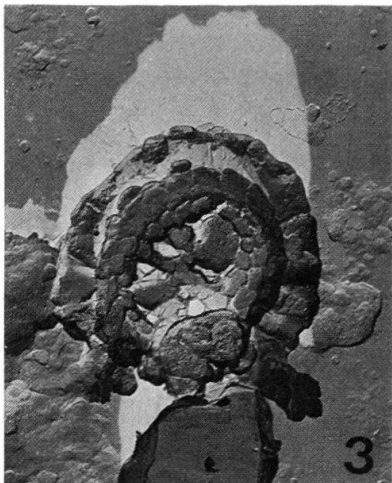
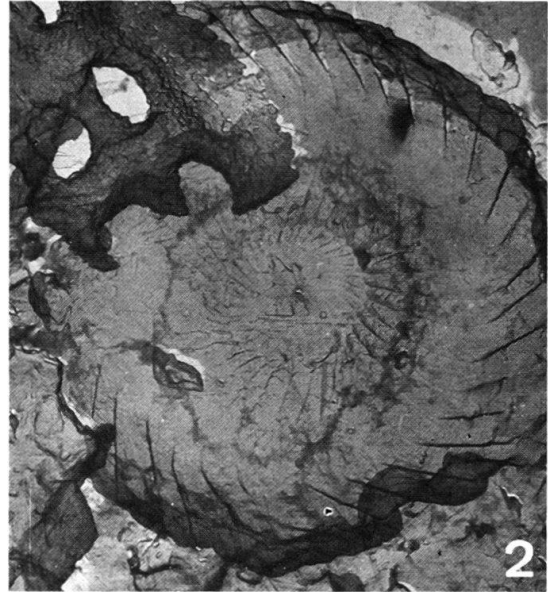
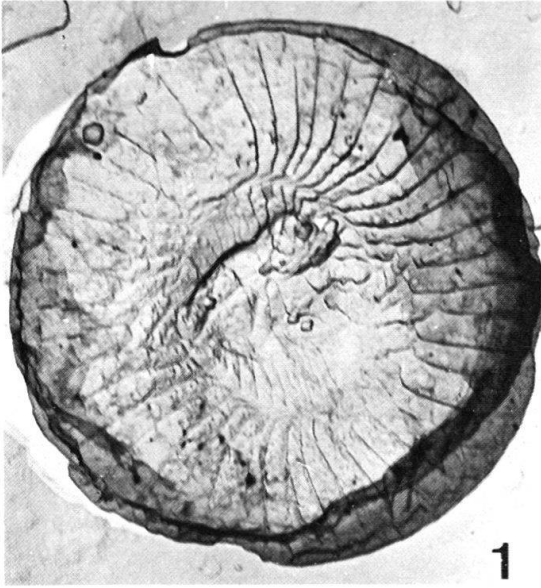


Plate VII

- Fig. 1 *Cyclococcolithus kingi* n. sp. Holotype A 815 022 [A 842], 10000 \times , distal view, Marianna Ls., 15' from base, Alabama.
- Fig. 2 *Ilseolithina fusa* n. sp. Paratype A 600 162 [A 845], 15000 \times , proximal view, Red Bluff Fm., base, Alabama.
- Fig. 3 *Ilseolithina fusa* n. sp. Holotype A 608 372 [A 844], 15000 \times , distal view, Red Bluff Fm., 8' above base, Alabama.
- Fig. 4 *Coronocyclus serratus* HAY, MOHLER & WADE. Hypotype J3-4222-20-11 [A 846], 10000 \times , distal view, JOIDES Hole 3, 422' below top, Blake Plateau, W Atlantic.
- Fig. 5 *Blackites incompertus* n. sp. Holotype A 610 358 [A 850], 5000 \times , side view, Red Bluff Fm., 10' above base, Alabama.
- Fig. 6 *Blackites amplus* ROTH & HAY. Hypotype J 503 189 [A 849], 6000 \times , distal view, JOIDES Hole 5, 484' below top, Blake Plateau, W Atlantic.

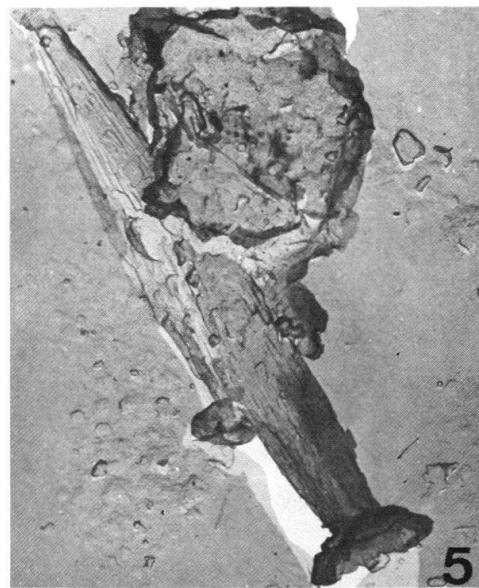
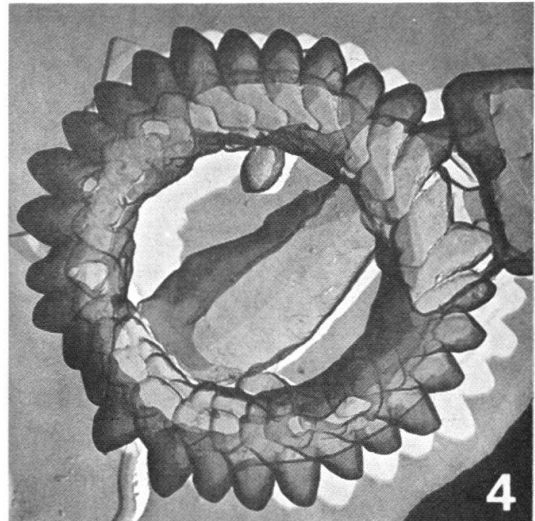
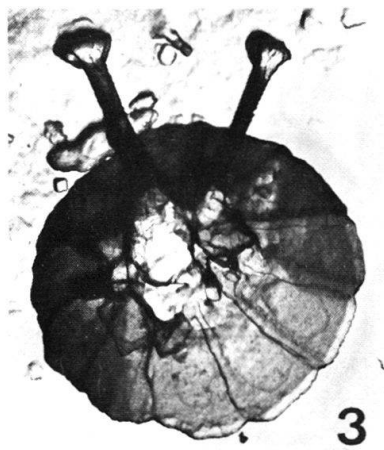
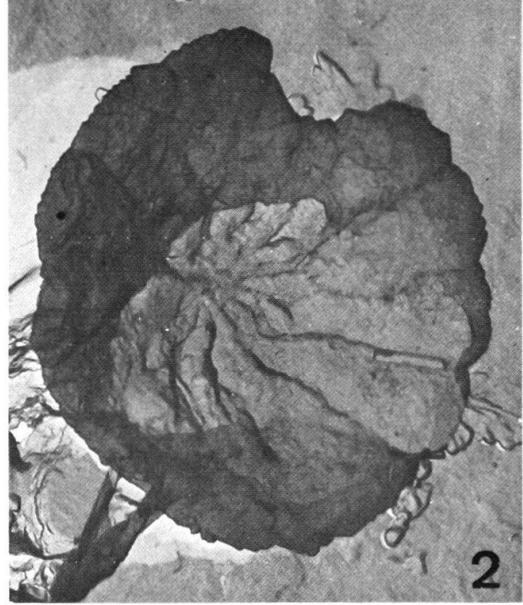
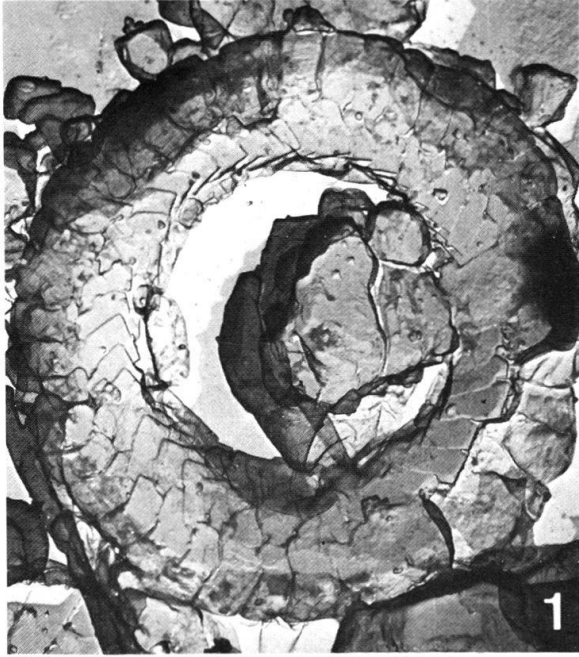


Plate VIII

- Fig. 1 *Blackites incompertus* n. sp. Paratype A 610 266 [A 852], 5000×, side view, Red Bluff Fm., 10' above base, Alabama.
- Fig. 2 *Blackites incompertus* n. sp. Paratype A 610 105 [A 851], 10000×, side view, Red Bluff Fm., 10' above base, Alabama.
- Fig. 3 *Bramletteius variabilis* n. sp. Holotype A 608 432 [A 854], 15000×, side view Red Bluff Fm., 8' above base, Alabama.
- Fig. 4 *Blackites spinulus* (LEVIN) n. comb. Hypotype A 600 271 [A 853], 5000×, side view, Red Bluff Fm., base, Alabama.
- Fig. 5 *Bramletteius variabilis* n. sp. Paratype A 608 420 [A 855], 15000×, side view, Red Bluff Fm., 8' above base, Alabama.
- Fig. 6 *Rhabdosphaera vitrea* (DEFLANDRE) BRAMLETTE & SULLIVAN. Hypotype A 608 189 [A 848], 10000×, side view, Red Bluff Fm., 8' above base.

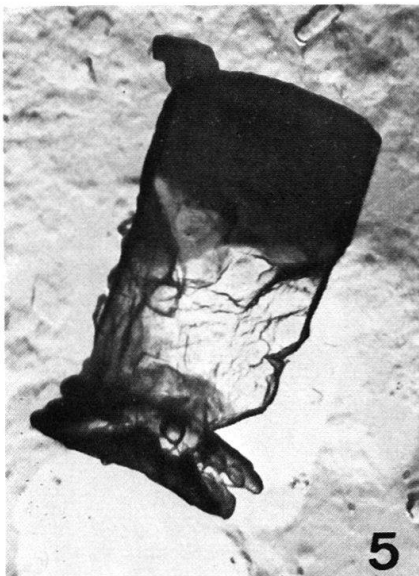
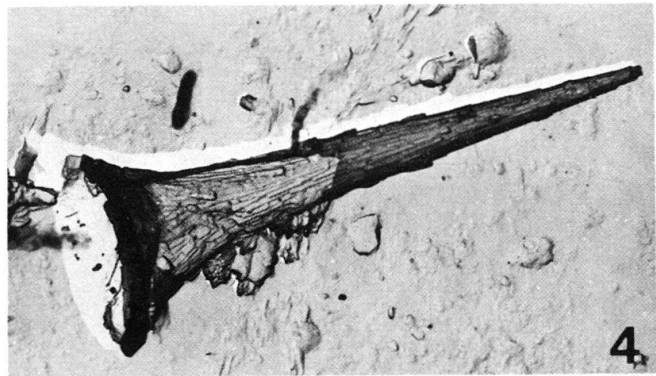
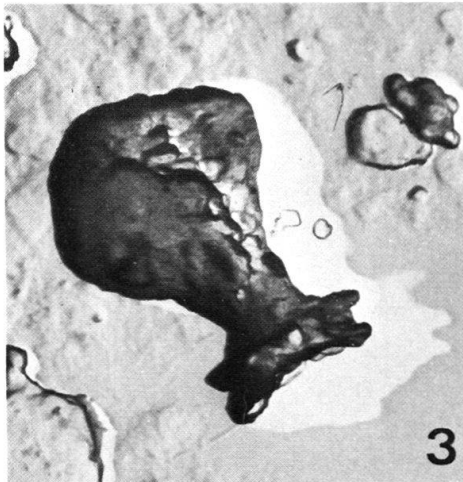
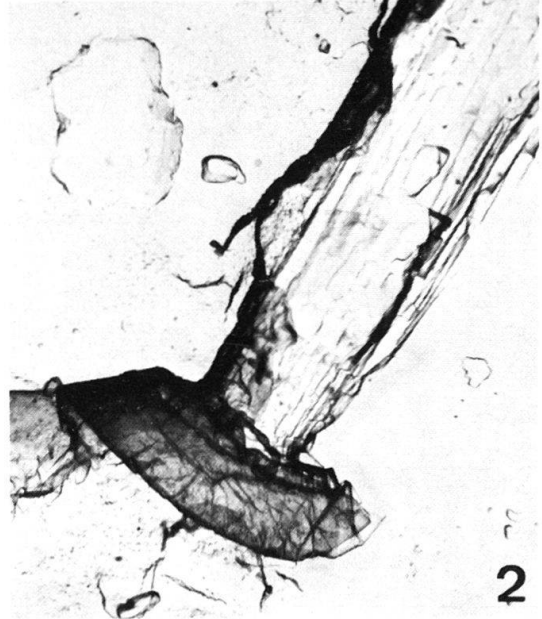
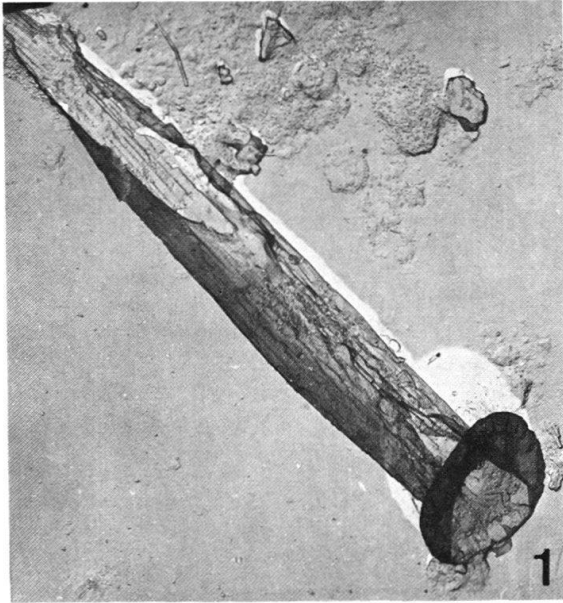


Plate IX

- Fig. 1 *Rhabdosphaera vitrea* (DEFLANDRE) BRAMLETTE & SULLIVAN. Hypotype A 6000 296 [A 847], 10000 \times , side view, Red Bluff Fm., base, Alabama.
- Fig. 2 *Pontosphaera alta* n. sp. Paratype A 613 386 [A 857], 5000 \times , proximal view, Red Bluff Fm., 13' above base, Alabama.
- Fig. 3 *Pontosphaera alta* n. sp. Holotype A 613 138 [A 856], 5000 \times , proximal view, Red Bluff Fm., 13' above base, Alabama.
- Fig. 4 *Pontosphaera crucifera* n. sp. Holotype A 613 652 [A 858], 15000 \times , proximal view, Red Bluff Fm., 13' above base, Alabama.
- Fig. 5 *Pontosphaera crucifera* n. sp. Paratype A 613 643 [A 859], 15000 \times , distal view, Red Bluff Fm., 13' above base, Alabama.
- Fig. 6 *Pantosphaera rigida* n. sp. Holotype JS 1847 445 [A 860], 15000 \times , distal view, Ciperó Fm., Trinidad.

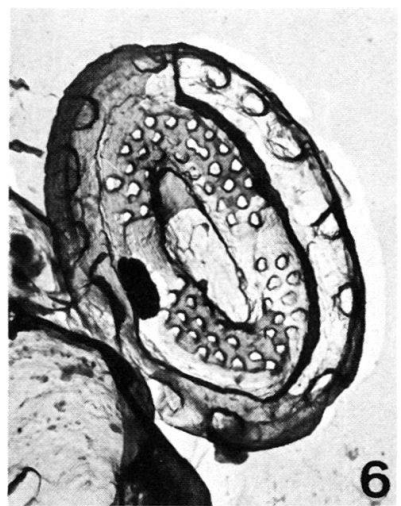
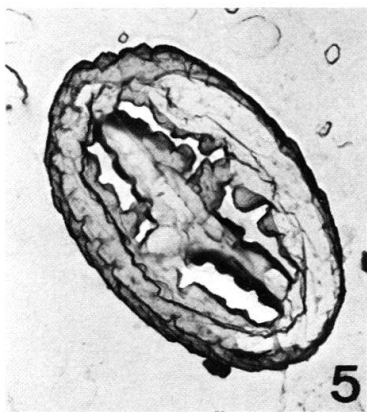
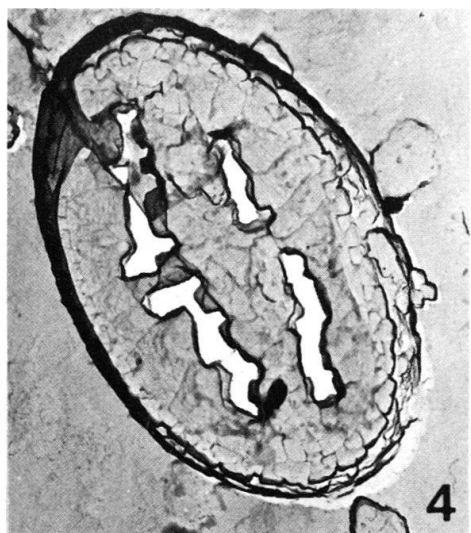
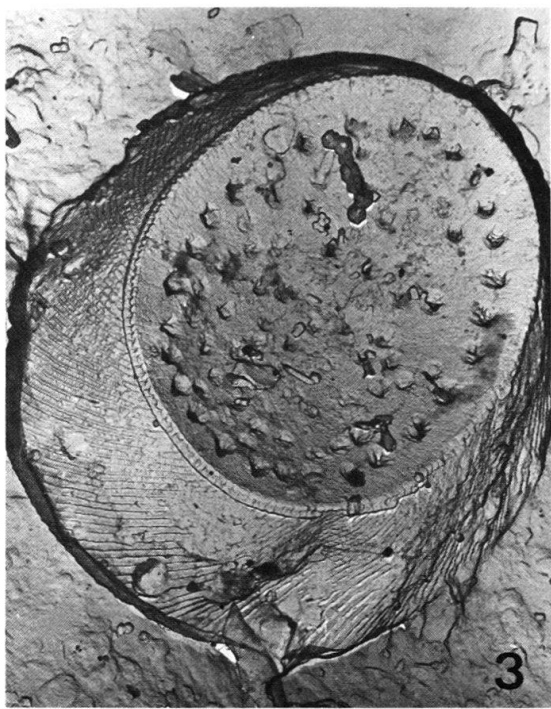
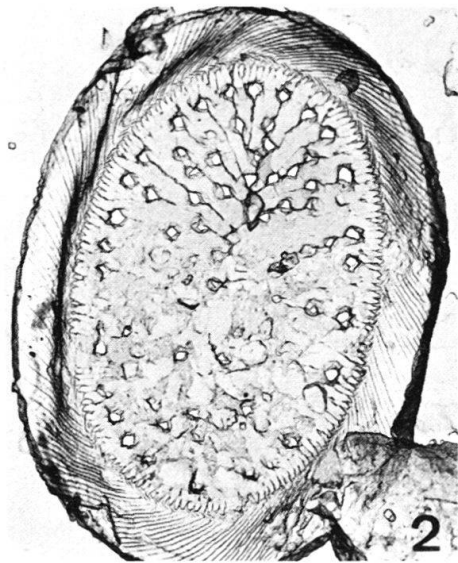


Plate X

- Fig. 1 *Pontosphaera rigida* n. sp. Paratype JS 1847 576 [A 861], 15000 \times , proximal view, Ciperó Fm., Trinidad.
- Fig. 2 *Helicopontosphaera compacta* (BRAMLETTE & WILCOXON) n. comb. Hypotype JS 1847 490 [A 862], 10000 \times , proximal view, Ciperó Fm., Trinidad.
- Fig. 3 *Helicopontosphaera truncata* (BRAMLETTE & WILCOXON) n. comb. Hypotype JS 20 008 [A 866], 10000 \times , convex side, Ciperó Fm., Trinidad.
- Fig. 4 *Helicopontosphaera compacta* (BRAMLETTE & WILCOXON) n. comb. Hypotype JS 1847 502 [A 863], 10000 \times , concave side, Ciperó Fm., Trinidad.
- Fig. 5 *Helicopontosphaera reticulata* (BRAMLETTE & WILCOXON) n. comb. Hypotype JS 1066 047 [A 865], 10000 \times , convex side, Oceanic Fm., Barbados.
- Fig. 6 *Helicopontosphaera intermedia* (MARTINI) HAY & MOHLER. Hypotype JS 20 462 [A 864], 10000 \times , convex side, Ciperó Fm., Trinidad.

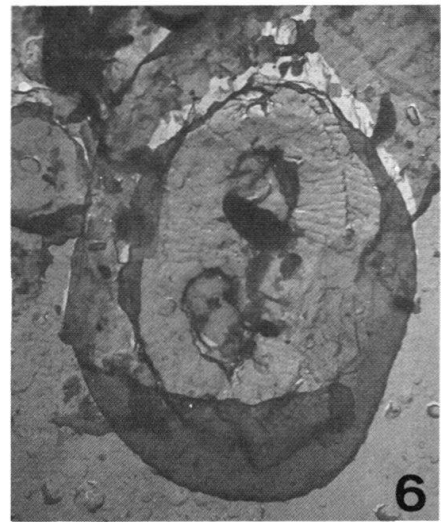
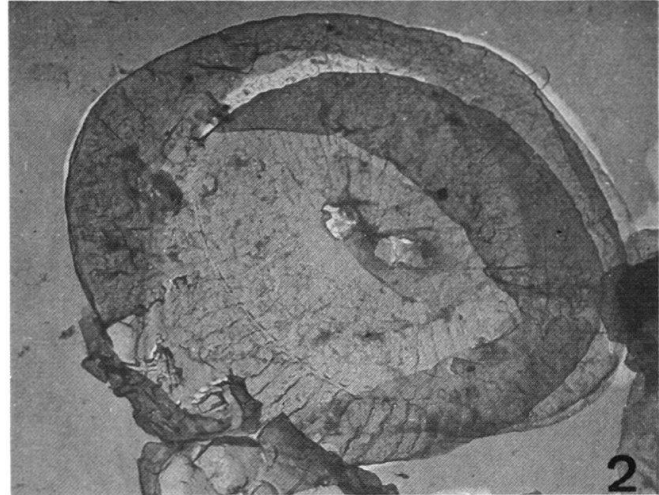


Plate XI

- Fig. 1 *Cepekiella elongata* n. sp. Holotype A 613 574 [A 867], 15000×, distal view, Red Bluff Fm., 13' above base, Alabama.
- Fig. 2 *Cepekiella elongata* n. sp. Paratype ETH 68-30-806 [A 868], 15000×, proximal view, Silberberg Fm., near Helmstedt, Northern Germany.
- Fig. 3 *Cepekiella hayi* (STRADNER) n. comb. Hypotype ETH 68-70-855 [A 869], distal view, Silberberg Fm., Silberberg, Northern Germany.
- Fig. 4 *Discoturbella moori* n. sp. Holotype A 608 297 [A 870], 10000×, side view, Red Bluff Fm., 8' above base, Alabama.
- Fig. 5 *Holodiscolithus solidus* (DEFLANDRE) n. comb. Hypotype A 608 343 [A 873], 15000×, distal view, Red Bluff Fm., 8' above base, Alabama.
- Fig. 6 *Holodiscolithus macroporus* (DEFLANDRE) n. comb. Hypotype A 600 088 [A 872], 15000×, distal view, Red Bluff Fm., base, Alabama.

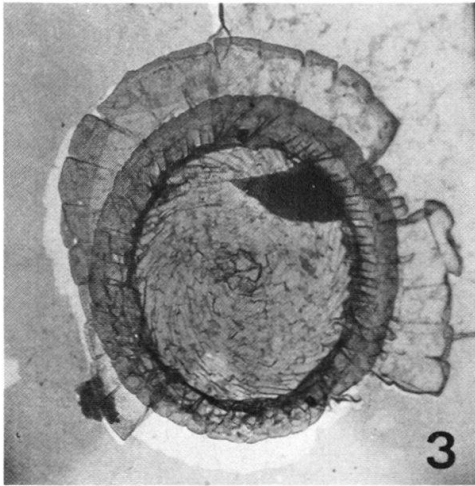
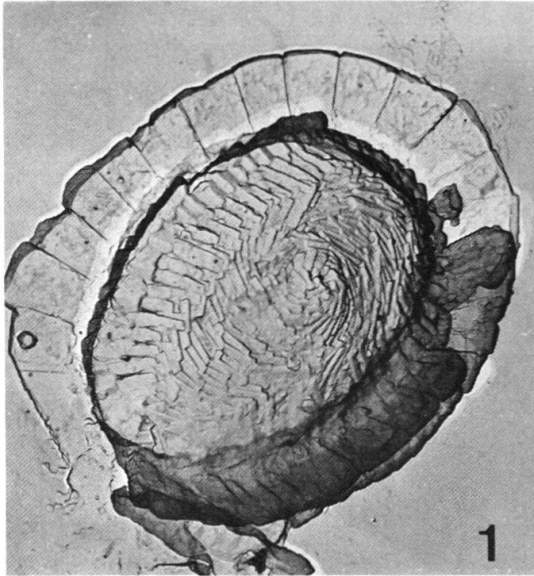


Plate XII

- Fig. 1 *Zygosphaera brytika* n. sp. Holotype A 608 088 [A 871], 15000×, distal view, Red Bluff Fm., 8' above base, Alabama.
- Fig. 2 *Clathrolithus minutus* DEFLANDRE. Hypotype A 809 098 [A 874], 10000×, distal view, Marianna Ls., 9' above base, Alabama.
- Fig. 3 *Discoaster rufus* n. sp. Holotype J3-397-7-6 [A 875], 8600×, JOIDES Hole 3, 397' below top, Blake Plateau, W Atlantic.
- Fig. 4 *Discoaster tani nodifer* BRAMLETTE & RIEDEL. Hypotype A 800046 [A 876], 5000×, base of Marianna Ls., Alabama.
- Fig. 5 *Discoaster trinus* STRADNER. Hypotype J3-475-9-1 [A 877], 4800×, JOIDES Hole 3, 475' below top, Blake Plateau, W Atlantic.
- Fig. 6 *Discoaster woodringi* BRAMLETTE & RIEDEL. Hypotype J 301 003 [A 878], 5000×, JOIDES Hole 3, 270' below top, Blake Plateau, W Atlantic.

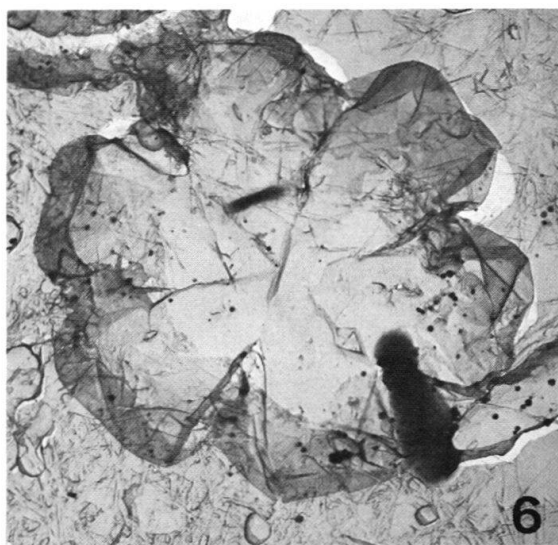
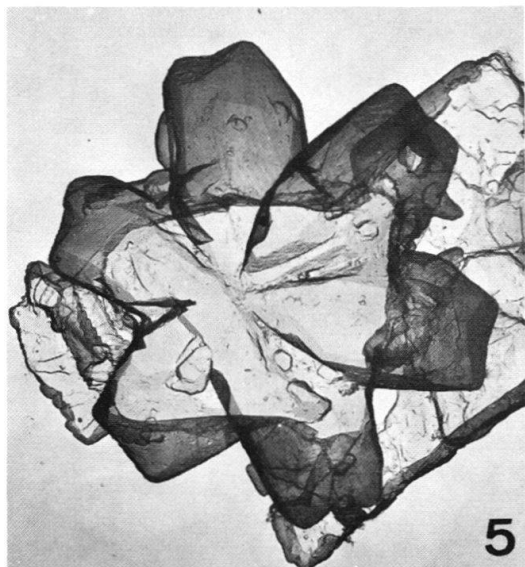
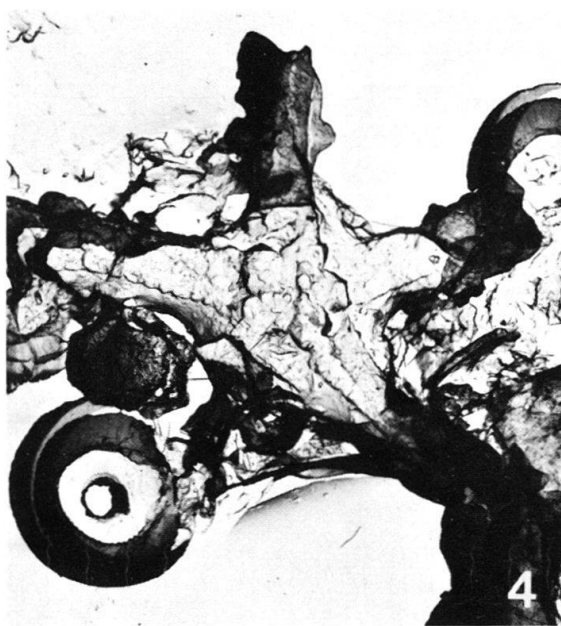
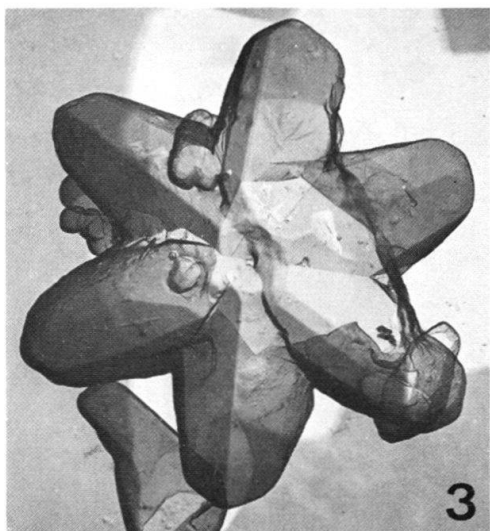
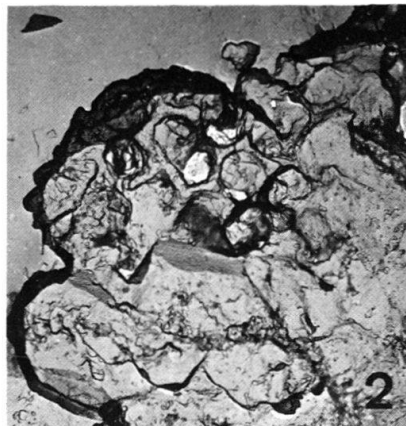
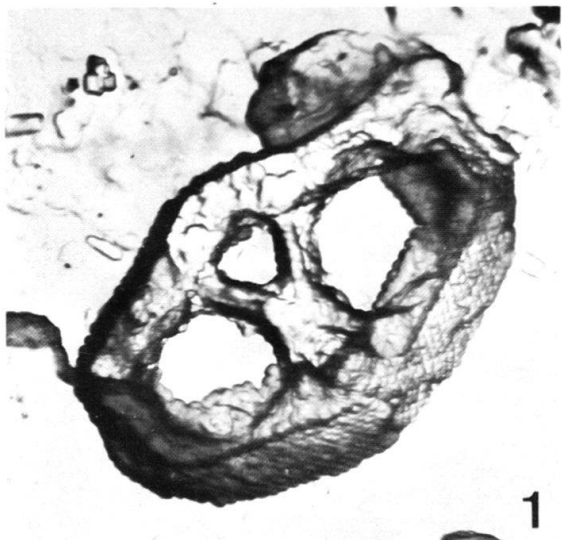


Plate XIII

- Fig. 1 *Lithostromation perdurum* DEFLANDRE. Hypotype J 509 209 [A 879], 5000 ×, JOIDES Hole 5, 260' 2" below top, Blake Plateau, W Atlantic.
- Fig. 2 *Lithostromation perdurum* DEFLANDRE. Hypotype A 800 072 [A 880], 5000 ×, base of Marianna Ls., Alabama.
- Fig. 3 *Sphenolithus distentus* (MARTINI) BRAMLETTE & WILCOXON. Hypotype J3-422-20-10 [A 888], 3850 ×, JOIDES Hole 3, 422' below top, Blake Plateau, W Atlantic.
- Fig. 4 *Sphenolithus ciperoensis* BRAMLETTE & WILCOXON. Hypotype J3-270-18-2 [A 885], 10300 ×, JOIDES Hole 3, 270' below top, Blake Plateau, W Atlantic.
- Fig. 5 *Sphenolithus belemnos* BRAMLETTE & WILCOXON. Hypotype JS 267* 083 [A 883], 6000 ×, Cipero Fm., Trinidad.
- Fig. 6 *Sphenolithus belemnos* BRAMLETTE & WILCOXON. Hypotype J3-270-18-8 [A 882], 6800 ×, JOIDES Hole 3, 270' below top, Blake Plateau, W Atlantic.
- Fig. 7 *Sphenolithus distentus* (MARTINI) BRAMLETTE & WILCOXON. Hypotype J3-397-13-5 [A 887], 6800 ×, JOIDES Hole 3, 397' below top, Blake Plateau, W Atlantic.

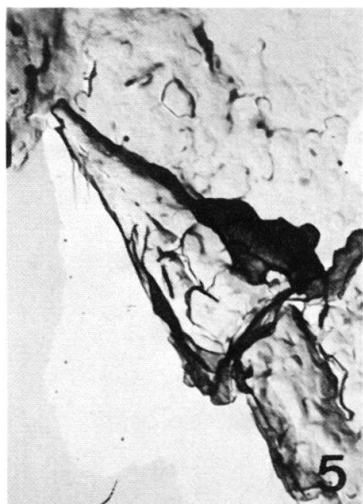
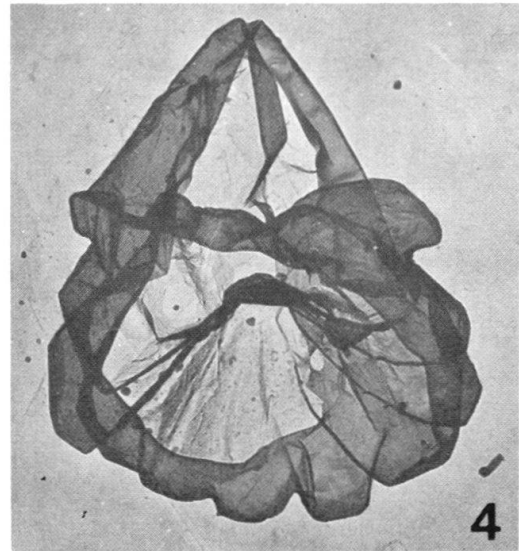
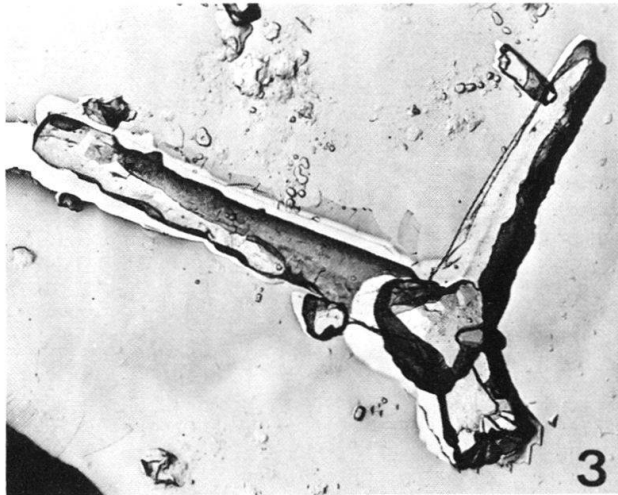
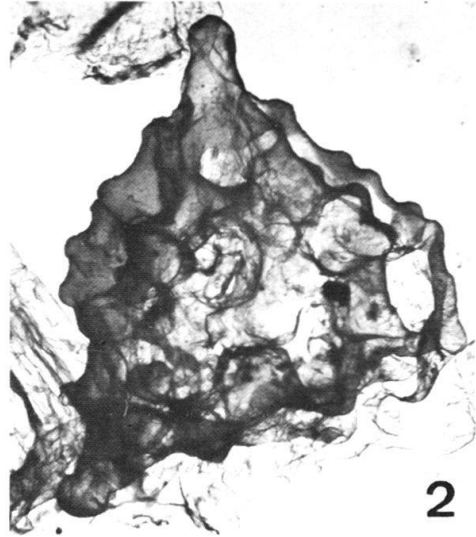


Plate XIV

- Fig. 1 *Sphenolithus ciperoensis* BRAMLETTE & WILCOXON. Hypotype JS 267* 070 [A 886], 5000×, Cipero Fm., Trinidad.
- Fig. 2 *Sphenolithus ciperoensis* BRAMLETTE & WILCOXON. Hypotype J3-306-16-7 [A 884], 10000×, JOIDES Hole 3, 306' below top, B lake Plateau, W Atlantic.
- Fig. 3 *Sphenolithus moriformis* (BRÖNNIMANN & STRADNER) BRAMLETTE & WILCOXON, Hypotype J3-475-11-1 [A 889], 9000×, JOIDES Hole 3, 475' below top, B lake Plateau, W Atlantic.
- Fig. 4 *Sphenolithus moriformis* (BRÖNNIMANN & STRADNER) BRAMLETTE & WILCOXON. Hypotype J3-381-20-5 [A 890], 9500×, JOIDES Hole 3, 381' below top, Blake Plateau, W Atlantic.
- Fig. 5 *Sphenolithus tribulosus* n. sp. Holotype A 608 504 [A 891], 10000×, Red Bluff Fm., 8' above base, Alabama.
- Fig. 6 *Triquetrorhabdulus carinatus* MARTINI. Hypotype Bo291 A 458 [A 881], 10000×, Cipero Fm., Trinidad.
- Fig. 7, 8 *Sphenolithus tribulosus* n. sp. Paratype A 613-Lool A + B, 1750×, (7)A, long axis 45° to crossed nicols, [A 892], (8) B, long axis 0° to crossed nicols [A 893]; Red Bluff Fm., 13' above base, Alabama.

