

Koskikeskus multi-use center, Tampere (Finland)

Autor(en): [s.n.]

Objektyp: **Article**

Zeitschrift: **IABSE structures = Constructions AIPC = IVBH Bauwerke**

Band (Jahr): **12 (1988)**

Heft C-45: **Recent structures**

PDF erstellt am: **26.09.2024**

Persistenter Link: <https://doi.org/10.5169/seals-20911>

Nutzungsbedingungen

Die ETH-Bibliothek ist Anbieterin der digitalisierten Zeitschriften. Sie besitzt keine Urheberrechte an den Inhalten der Zeitschriften. Die Rechte liegen in der Regel bei den Herausgebern. Die auf der Plattform e-periodica veröffentlichten Dokumente stehen für nicht-kommerzielle Zwecke in Lehre und Forschung sowie für die private Nutzung frei zur Verfügung. Einzelne Dateien oder Ausdrucke aus diesem Angebot können zusammen mit diesen Nutzungsbedingungen und den korrekten Herkunftsbezeichnungen weitergegeben werden. Das Veröffentlichen von Bildern in Print- und Online-Publikationen ist nur mit vorheriger Genehmigung der Rechteinhaber erlaubt. Die systematische Speicherung von Teilen des elektronischen Angebots auf anderen Servern bedarf ebenfalls des schriftlichen Einverständnisses der Rechteinhaber.

Haftungsausschluss

Alle Angaben erfolgen ohne Gewähr für Vollständigkeit oder Richtigkeit. Es wird keine Haftung übernommen für Schäden durch die Verwendung von Informationen aus diesem Online-Angebot oder durch das Fehlen von Informationen. Dies gilt auch für Inhalte Dritter, die über dieses Angebot zugänglich sind.



2. Koskikeskus Multi-Use Center, Tampere (Finland)

Owner: Polar Construction Company
Architect: Antti Tähtinen
Structural consultants: Consulting Engineers A-Engineers and TE-EM (Tampere)
Contractor: Ahti Construction Company
Building time: 30 months
Service date: March 1988

The Koskikeskus multi-use center is a complete shopping and service center in Tampere with several projected future uses. The floor area is about 25 000 m² and the total area about 56 000 m², which, apart from the floor area, also includes underground car parking, stores, social and technical premises plus arcades and plazas inside the center buildings. The total volume is about 280 000 m³.

In the Finnish context the Koskikeskus project is on a scale of its own. This is also reflected in the technical details, in materials and finances. The design contains some features of the world's largest shopping centers; however, the building is designed with a special eye on the environment and the exacting Finnish conditions.

The excavation volume was well over 100 000 m³ solid volume. The foundations were laid below the level of the nearby main road, and therefore it was necessary to build high support and retaining walls and bedrock anchoring systems. A large area is founded on piles, part is founded on the subsoil and bedrock. The foundations, basement retaining walls and intermediate floors are made of concrete.

The building is steel-framed. Steel was chosen after careful studies where different concrete and steel frame structures were compared.

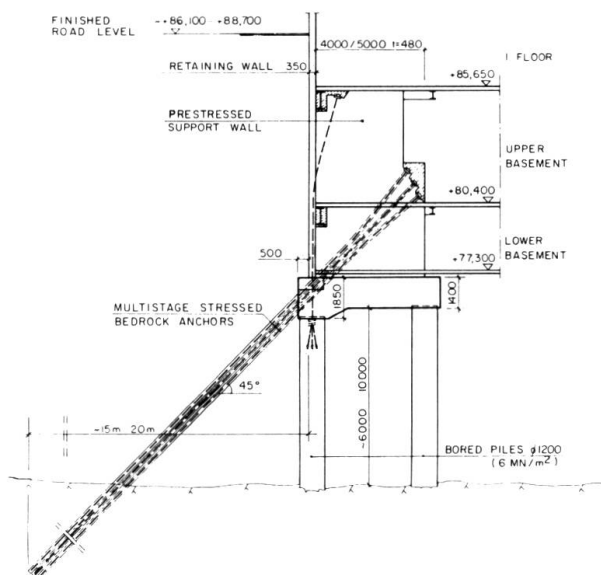


Fig. 1 The support system of the retaining wall

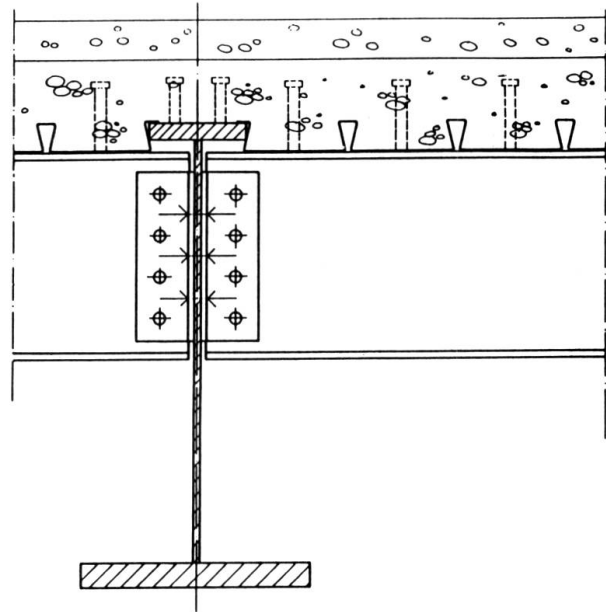


Fig. 2 The joint of primary and secondary beams

With the exception of industrial buildings, steel has thus far not been a very commonly used frame material in Finland. The choice of steel was a rather radical and unconventional decision, considering that the construction would need more than 4000 tonnes of steel plus more than 50 000 m² of corrugated steel sheet. Besides, about 60 000 m² of the frame would have to be fire-protected. This is one of the largest commercial buildings ever built in Finland and definitely the largest steel-framed.

The structural design agrees with the Finnish regulations, for instance, the loads on the floor are 19 kN/m² and 4 kN/m². The frame grid size is 8.4 m × 14.4 m and the columns of the frame are welded plate columns or structural hollow sections. The main girders are welded plate and the secondary beams hot rolled I-beam sections. The intermediate floor design is based on a composite structure consisting of steel girders, corrugated steel sheet and concrete. The spacing of the lateral girders has been selected to eliminate the need to support the steel sheet formwork during casting. The floor girders act as single-span beams, and all joints are bolted. Column extensions are made by welding.

The frame is fire-protected to grade A 120. The fire protection is applied by spraying and the columns exposed to external damage will be concreted.

Technically the Tampere Koskikeskus is a rather intricate building. To make the project profitable despite this difficulty we have chosen construction techniques and structural details that do not go too hard on the production. Our experiences of the project and the economic calculations show that we have succeeded and the decisions have been right.

(—)



Fig. 3 Air photograph

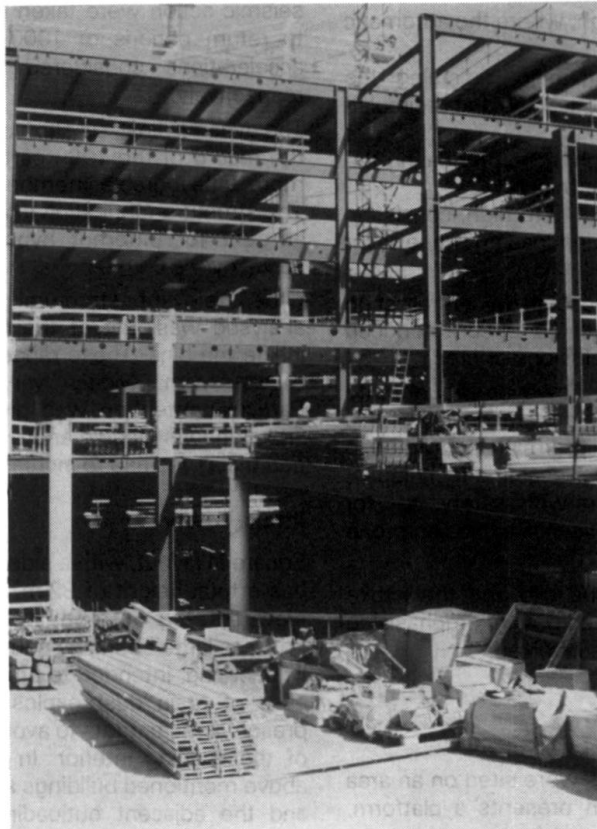


Fig. 4 Steel frame