

# Tafeln zu Heft 1-4

Autor(en): **[s.n.]**

Objektyp: **Appendix**

Zeitschrift: **Anzeiger für schweizerische Altertumskunde : Neue Folge =  
Indicateur d'antiquités suisses : Nouvelle série**

Band (Jahr): **4 (1902-1903)**

PDF erstellt am: **22.09.2024**

## **Nutzungsbedingungen**

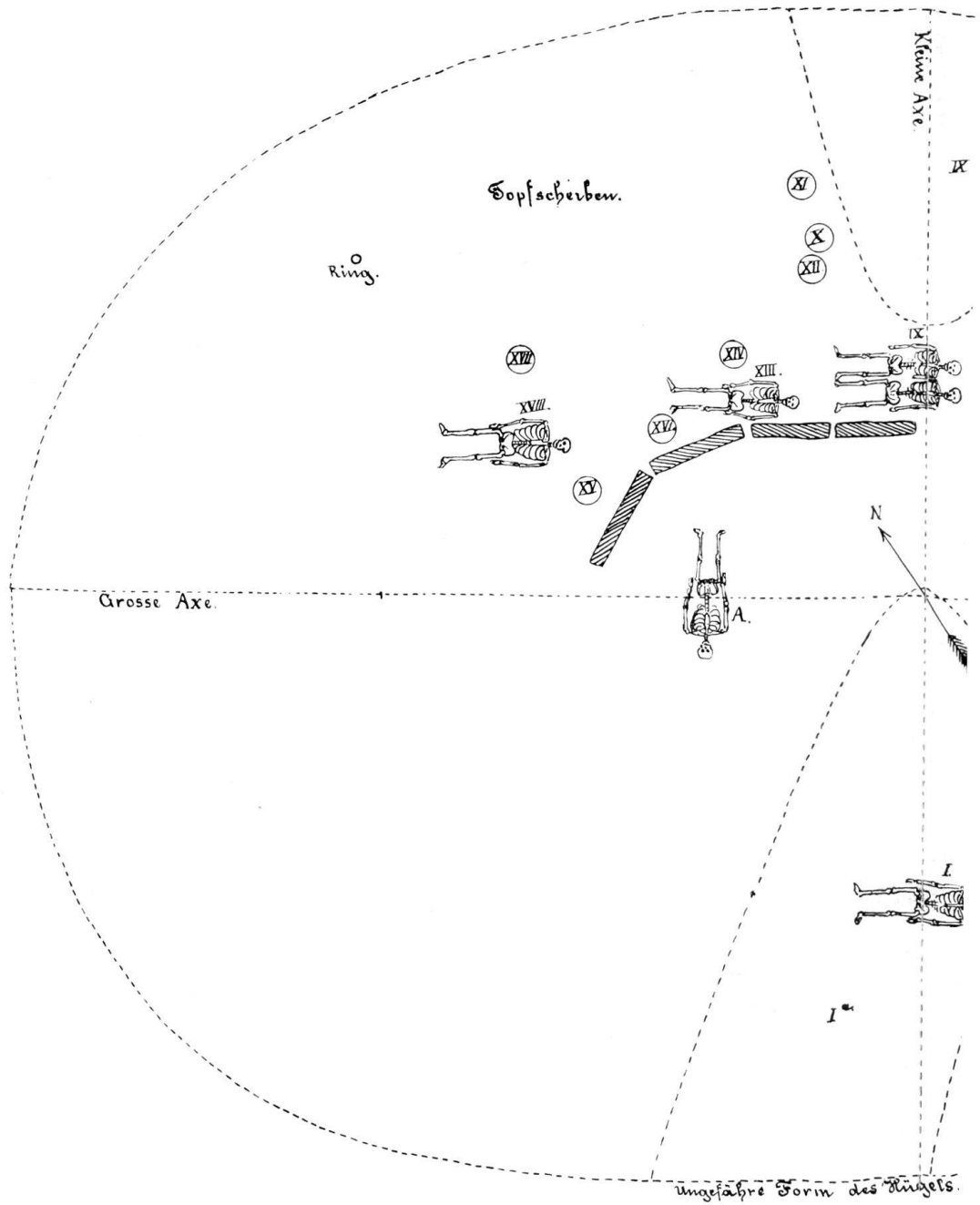
Die ETH-Bibliothek ist Anbieterin der digitalisierten Zeitschriften. Sie besitzt keine Urheberrechte an den Inhalten der Zeitschriften. Die Rechte liegen in der Regel bei den Herausgebern.

Die auf der Plattform e-periodica veröffentlichten Dokumente stehen für nicht-kommerzielle Zwecke in Lehre und Forschung sowie für die private Nutzung frei zur Verfügung. Einzelne Dateien oder Ausdrucke aus diesem Angebot können zusammen mit diesen Nutzungsbedingungen und den korrekten Herkunftsbezeichnungen weitergegeben werden.

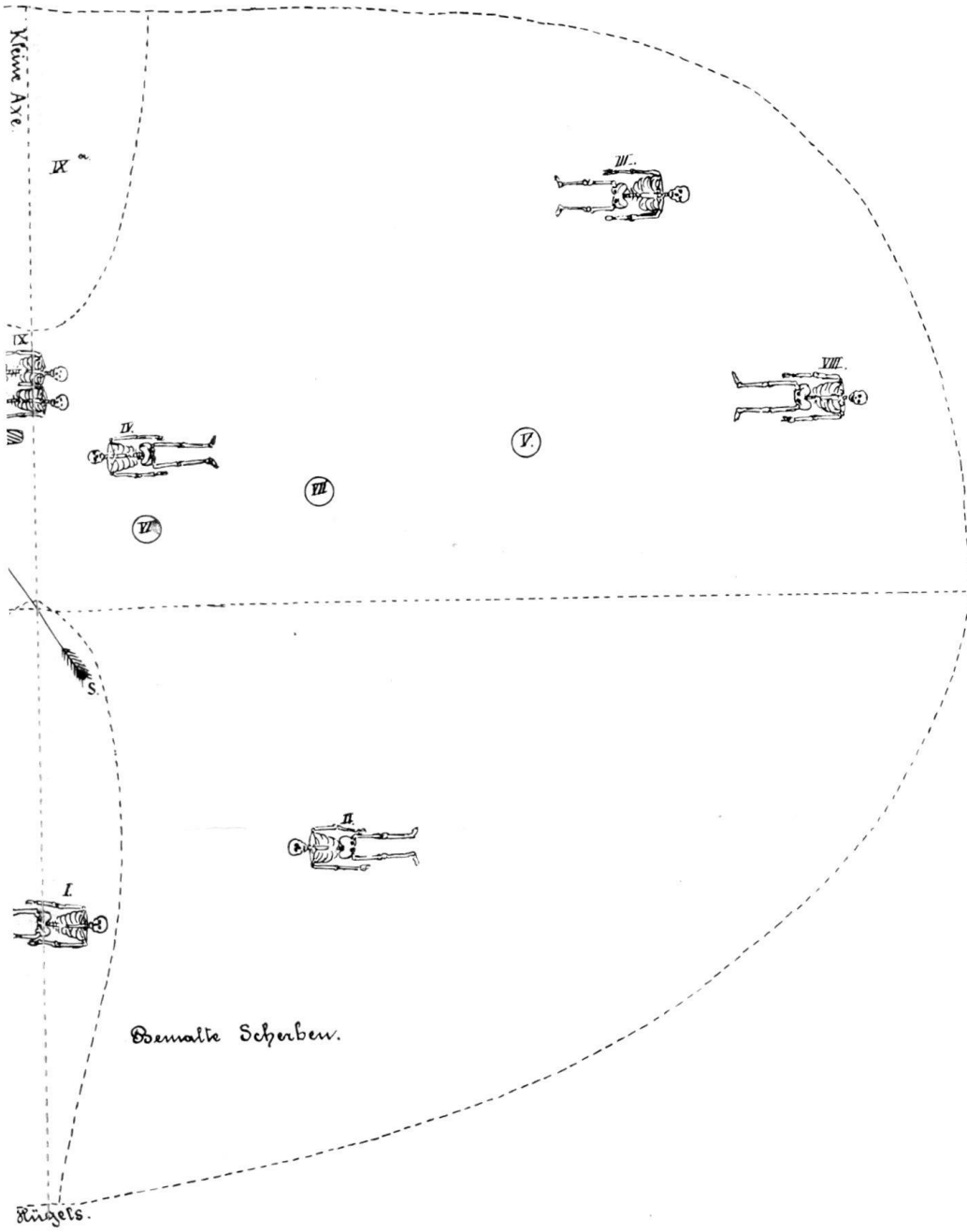
Das Veröffentlichen von Bildern in Print- und Online-Publikationen ist nur mit vorheriger Genehmigung der Rechteinhaber erlaubt. Die systematische Speicherung von Teilen des elektronischen Angebots auf anderen Servern bedarf ebenfalls des schriftlichen Einverständnisses der Rechteinhaber.

## **Haftungsausschluss**

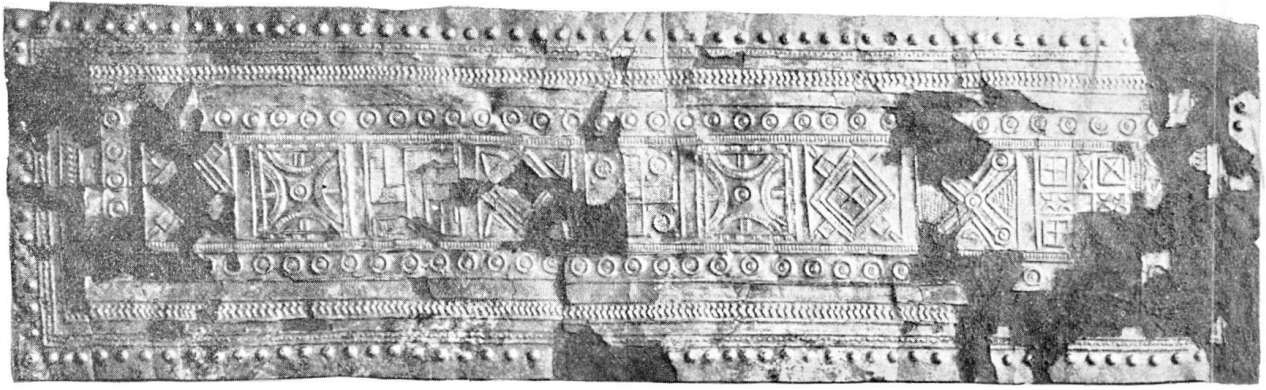
Alle Angaben erfolgen ohne Gewähr für Vollständigkeit oder Richtigkeit. Es wird keine Haftung übernommen für Schäden durch die Verwendung von Informationen aus diesem Online-Angebot oder durch das Fehlen von Informationen. Dies gilt auch für Inhalte Dritter, die über dieses Angebot zugänglich sind.



Situationsplan des Grabhügels „Wieslistein“  
 Masstab 1 : 1



tein“ bei Wangen (Dübendorf, Kt. Zürich).  
ib 1 : 100.



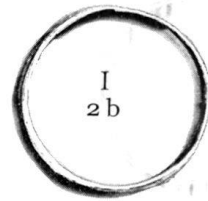
I, 1



I  
2 a



I, 4



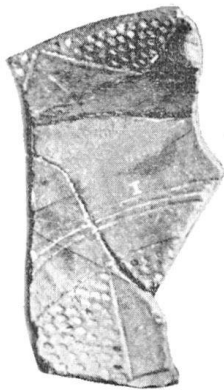
I  
2 b



I, 3 a



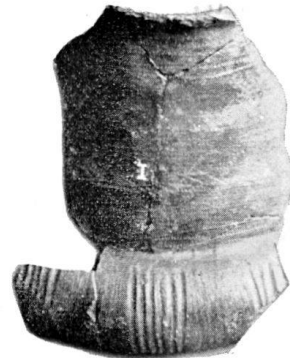
I, 3 b



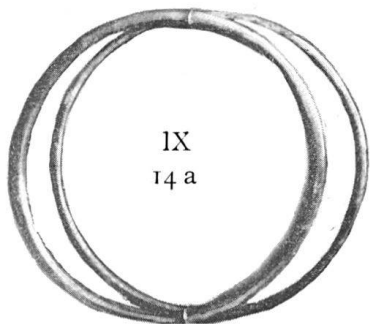
I, 7



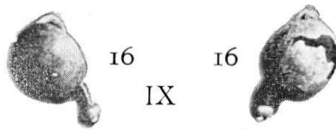
I, 6



I, 5



IX  
14 a



16  
IX



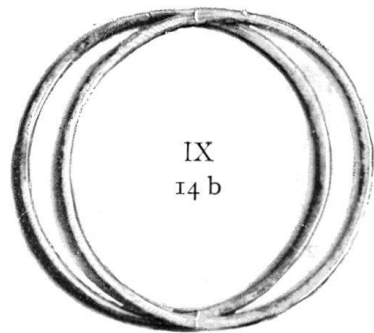
15 a



15

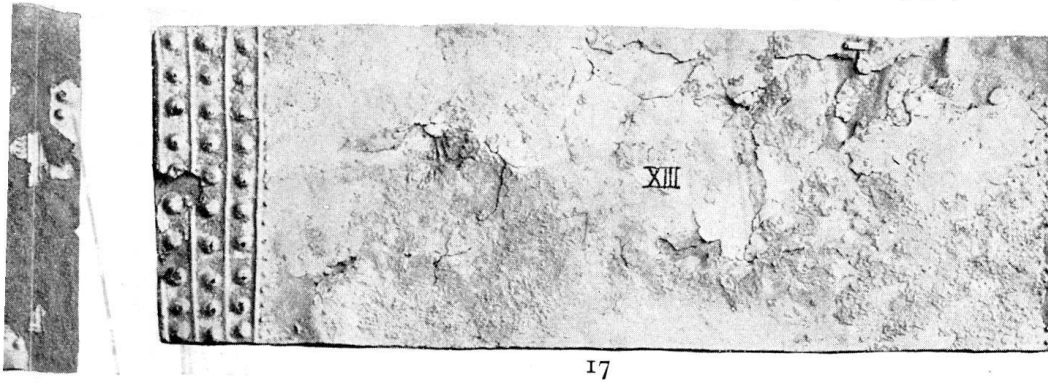


15 b

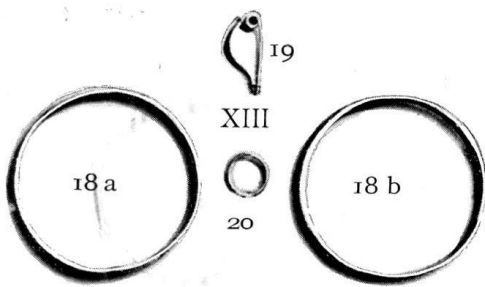


IX  
14 b

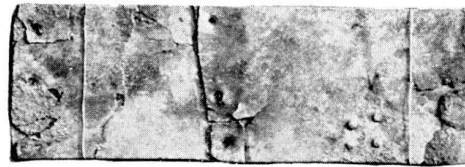
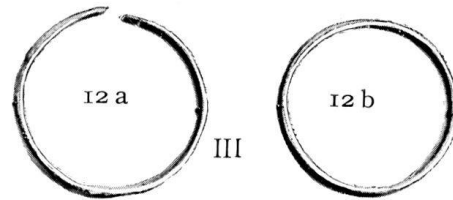
Funde aus dem Grabhügel „Wieslistein“ bei



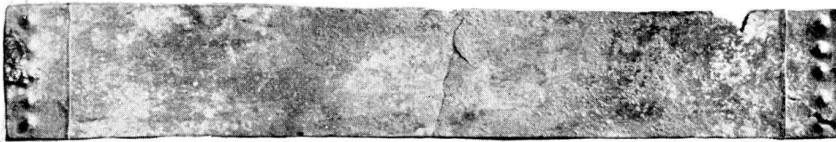
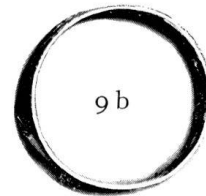
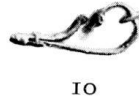
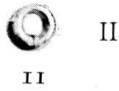
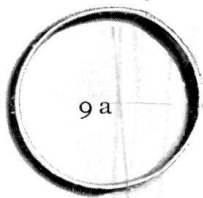
17



XIII



13



8



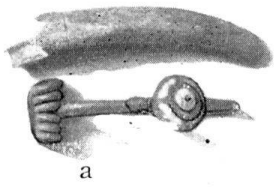
21 XVIII



22 a

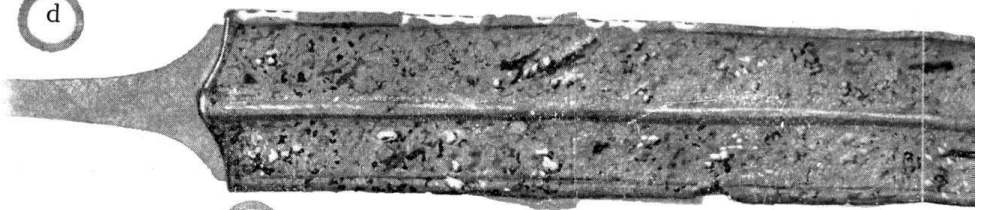
22 b

bei Wangen (Dübendorf, Kt. Zürich).



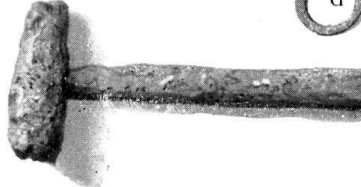
a

d

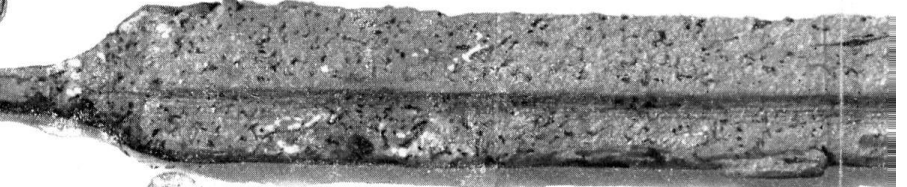


e

Fourreau (face supérieure)

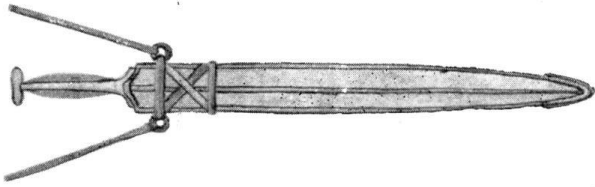


d

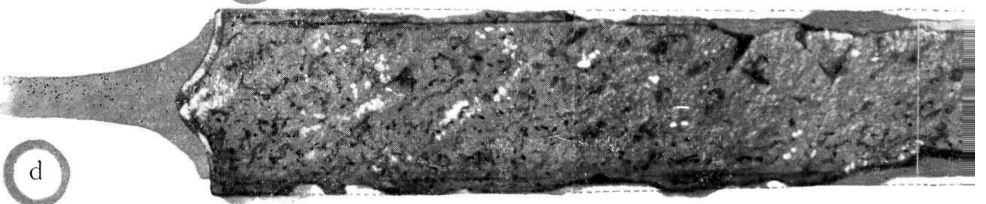


e

Epée c.

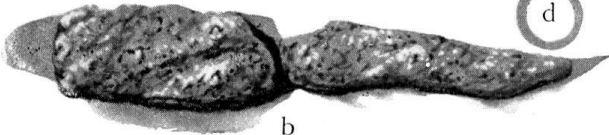


c

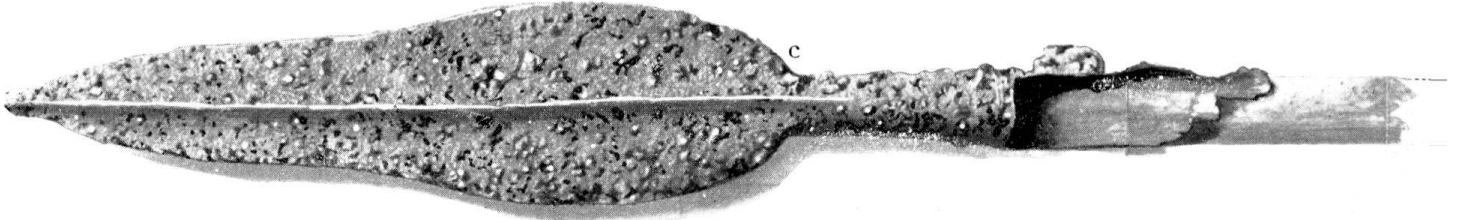


d

Fourreau (face inférieure)



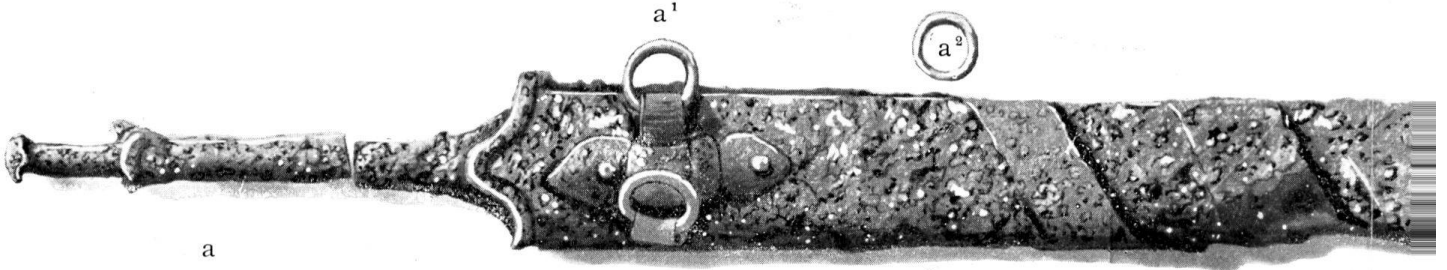
b



c



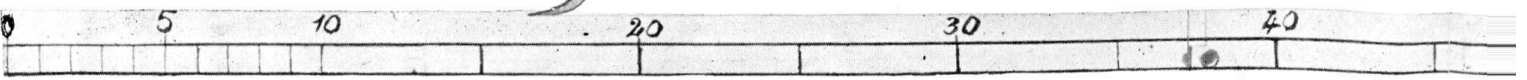
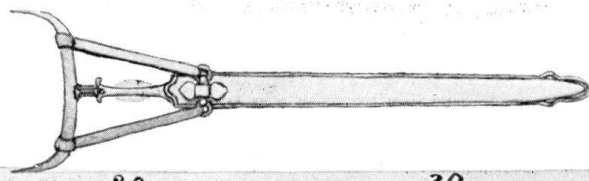
c

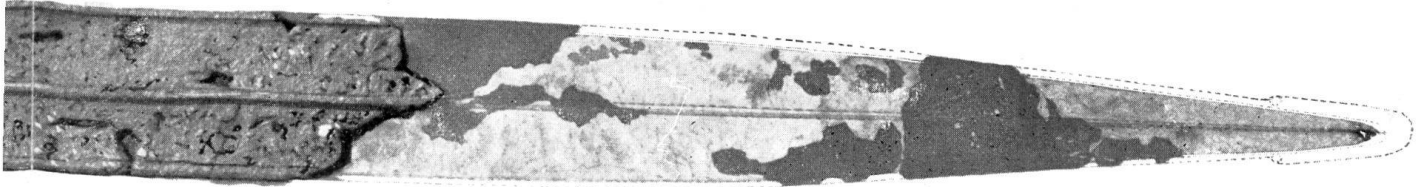


a

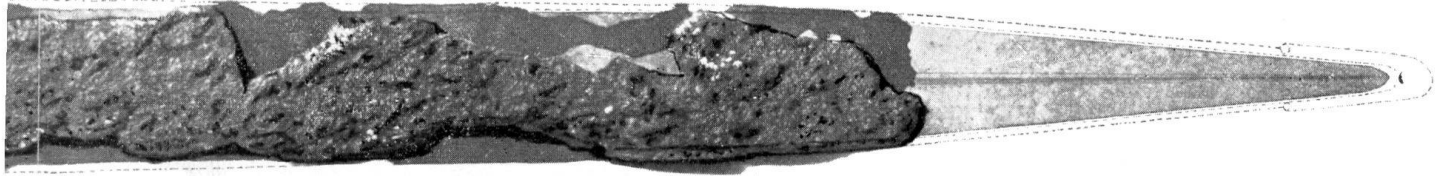
a<sup>1</sup>

a<sup>2</sup>

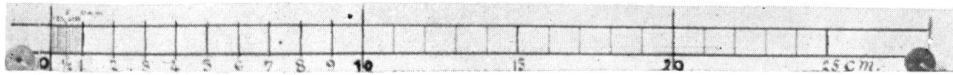




supérieure).

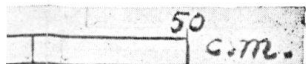
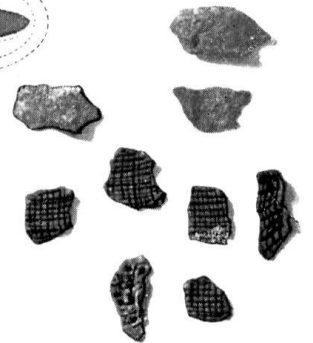
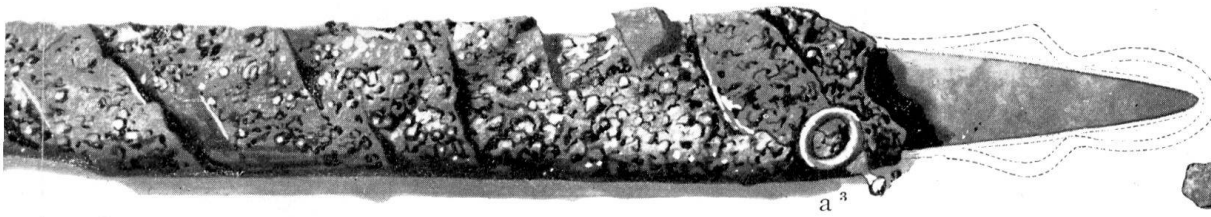
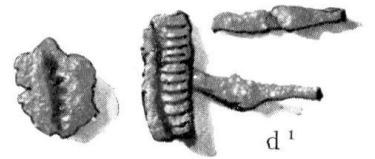
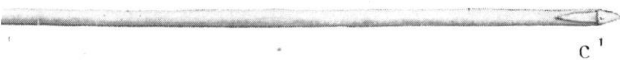
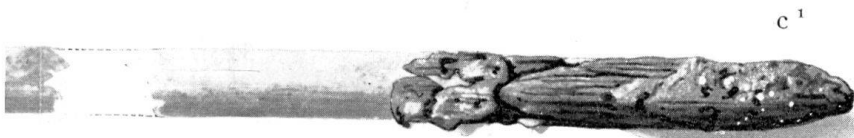


inférieure).



Fragments du Fourreau, restés  
adhérents à l'épée.

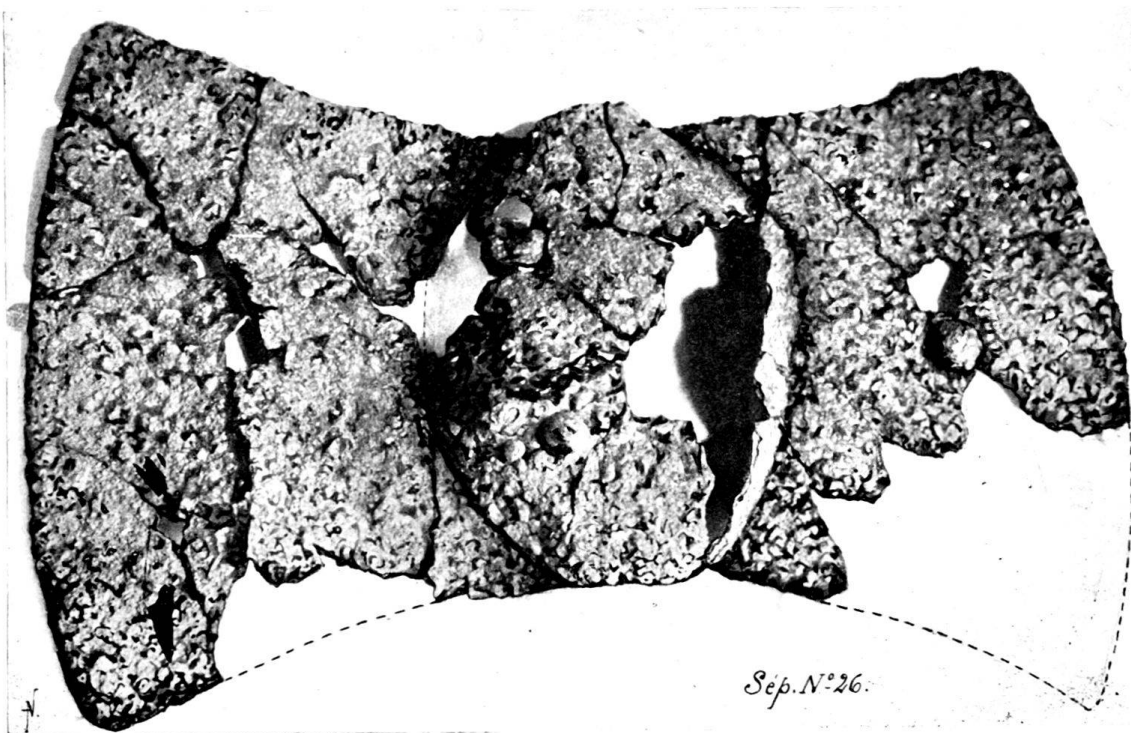
Sépulture N° 26.



Face intérieure.



Face extérieure.

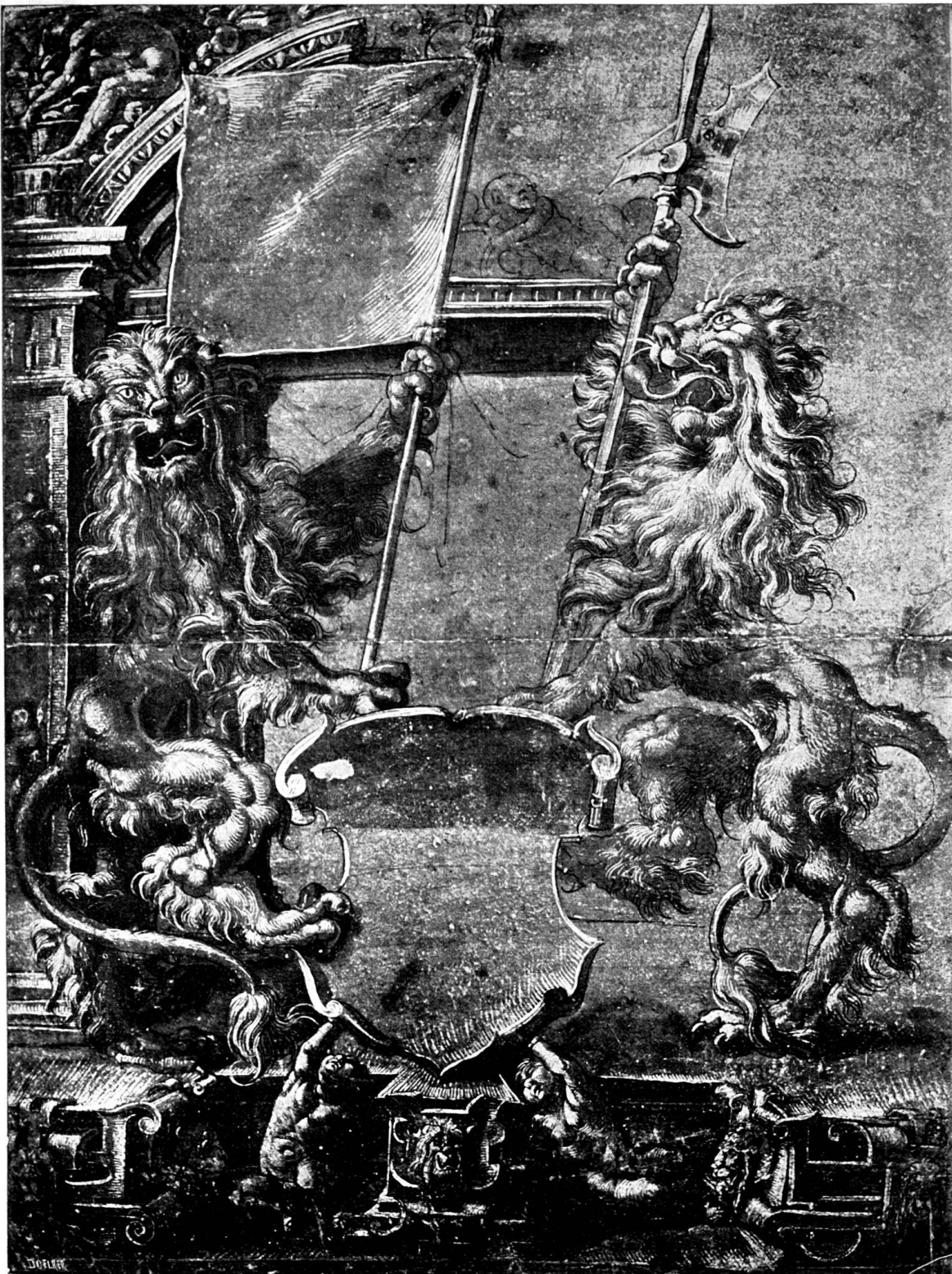


Sépulture N° 26. L'umbo du bouclier.





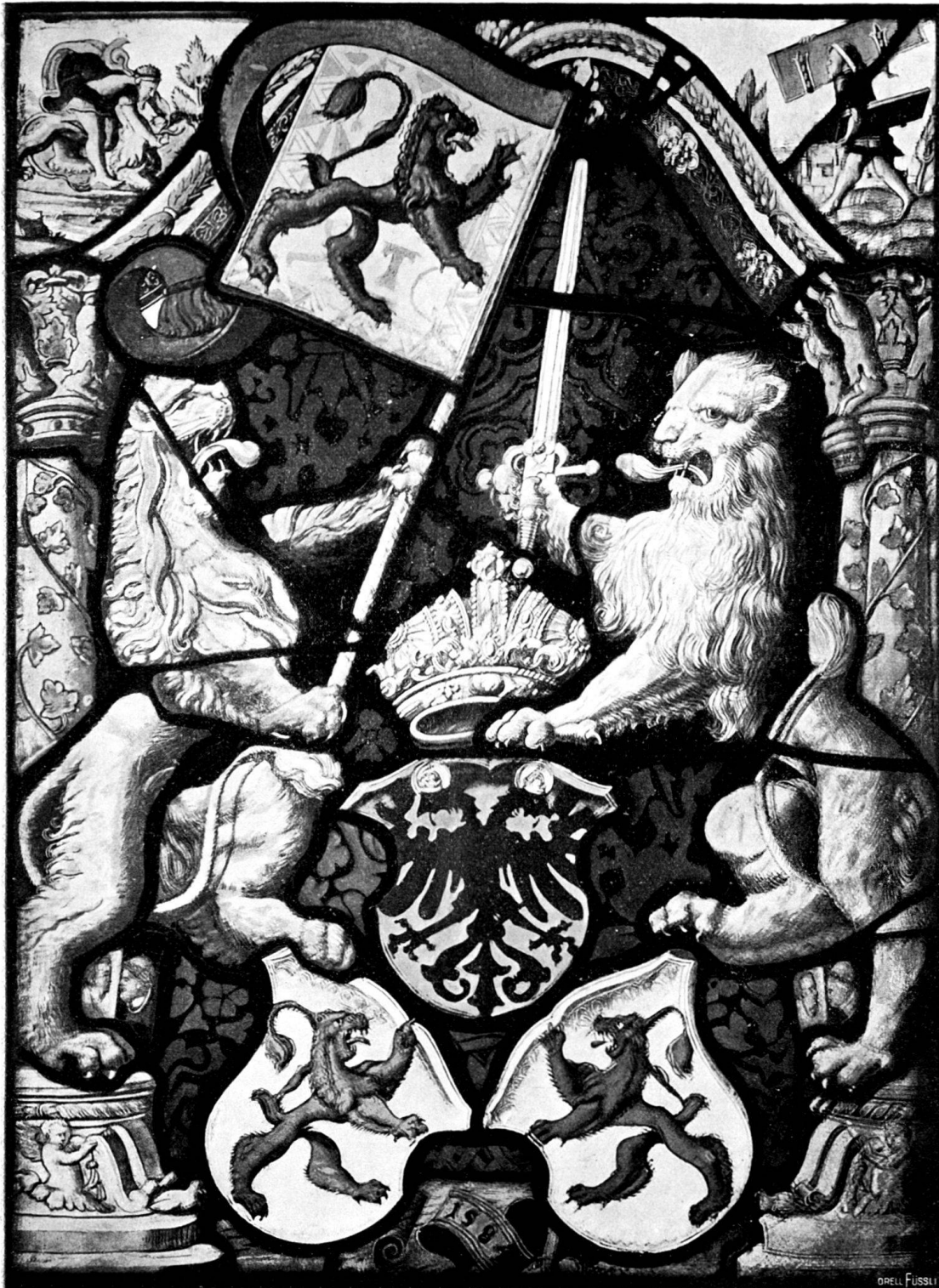
Wappenscheibe der Stadt Zofingen, 1547.



Entwurf zu einer Wappenscheibe in der Wyss'schen Sammlung,  
deponiert im hist. Museum zu Bern.



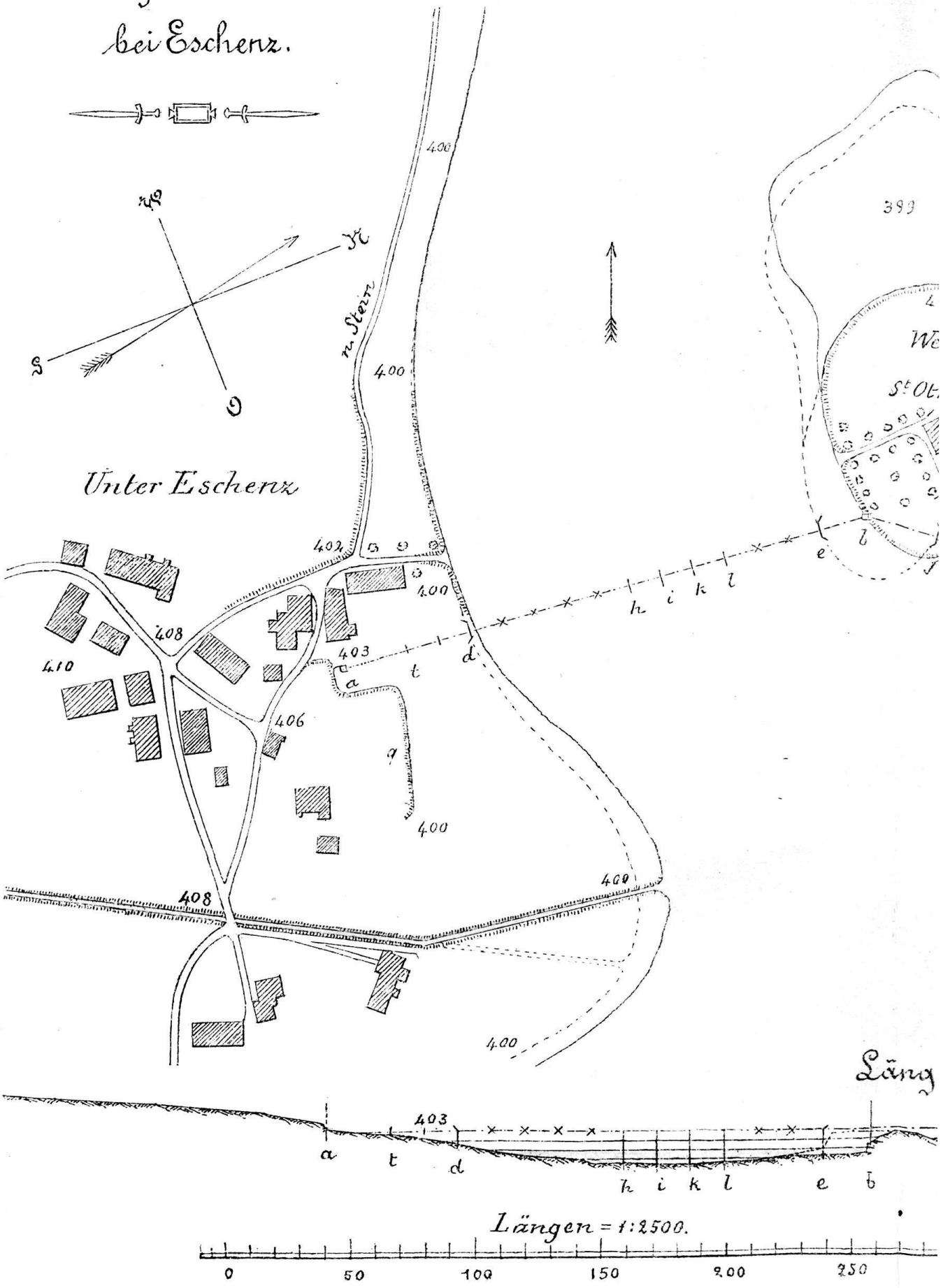
Wappenscheibe der Stadt Zofingen, 1565.



Wappenscheibe der Stadt Bremgarten, 1584.

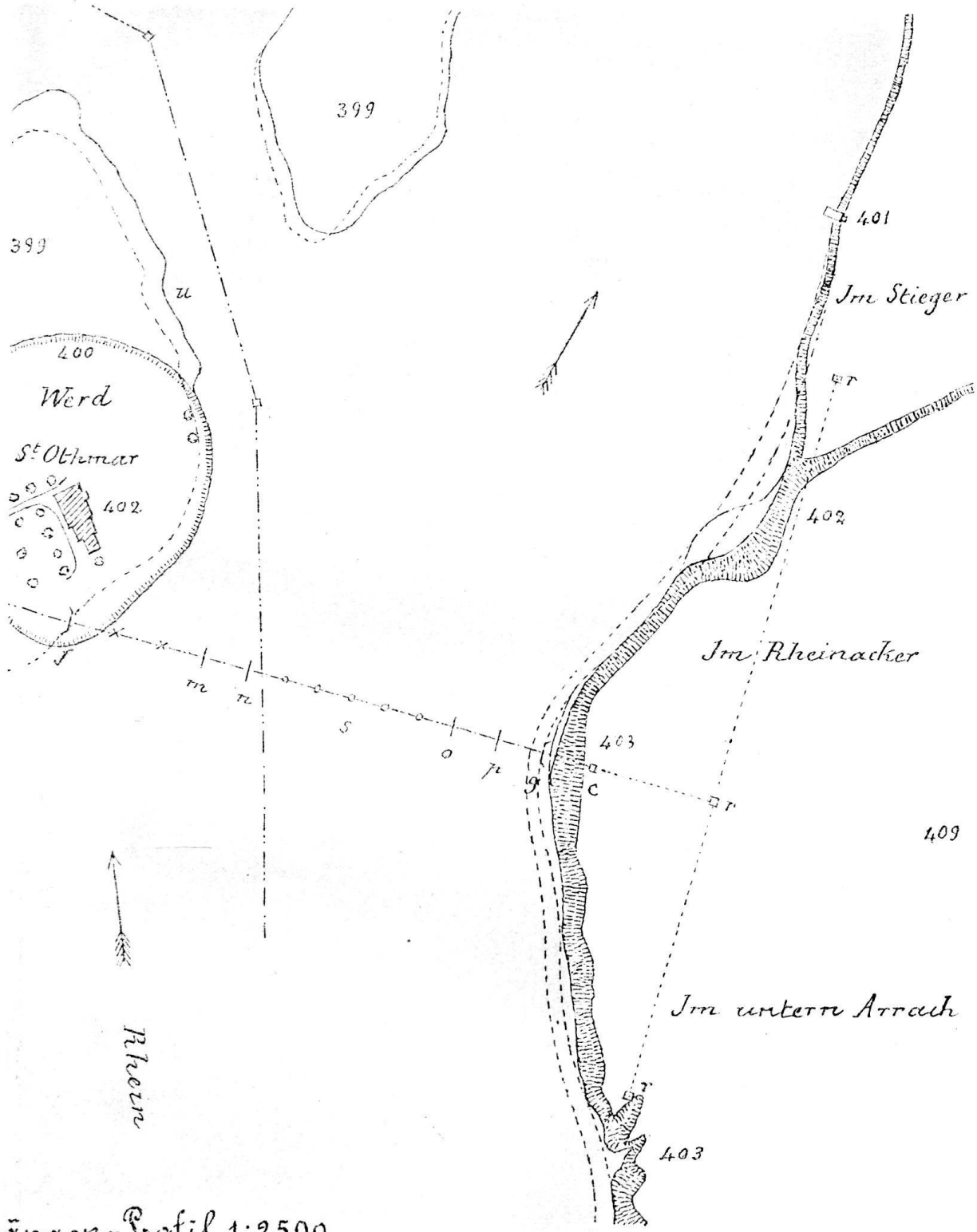
Ehemalige Körner-Brücke  
bei Escherz.

Situat

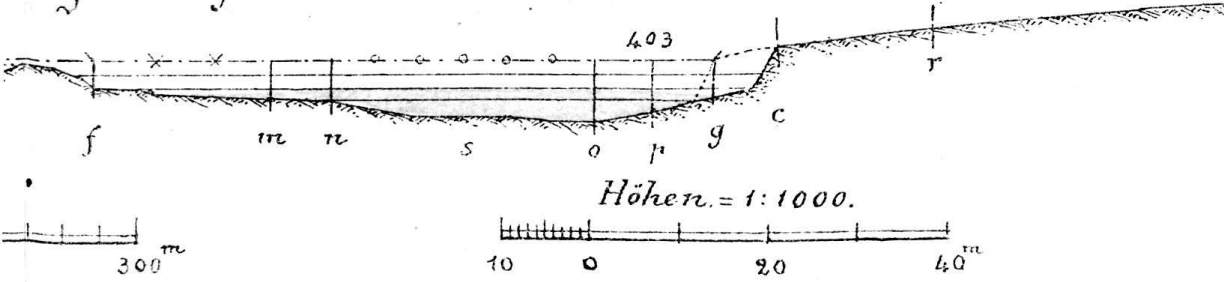


Alle Rechte vorbehalten.

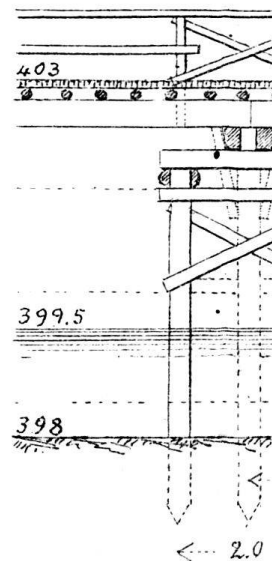
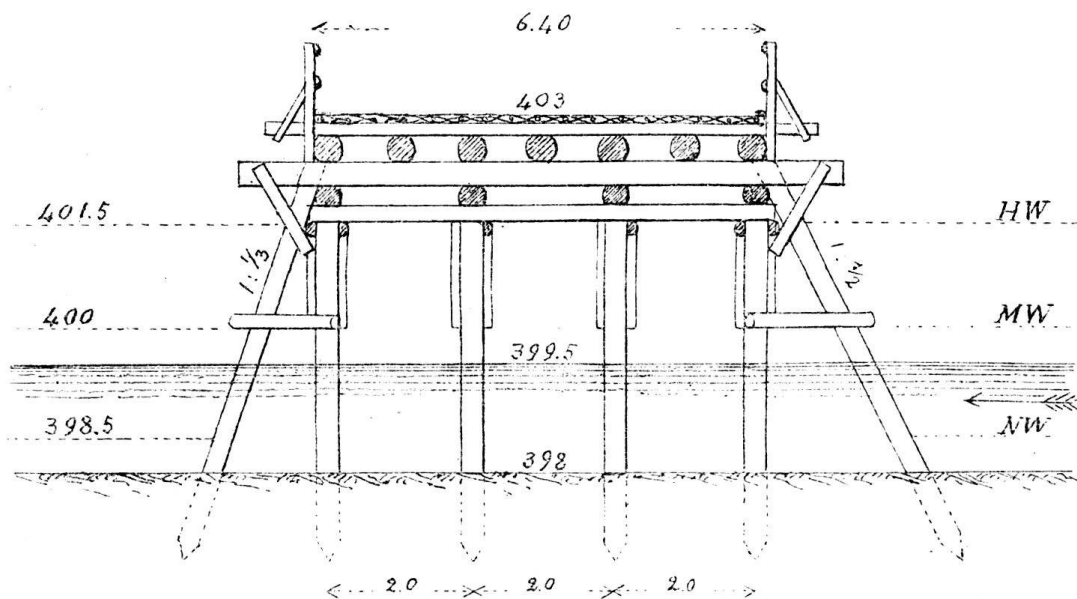
Lageplan 1:2500.



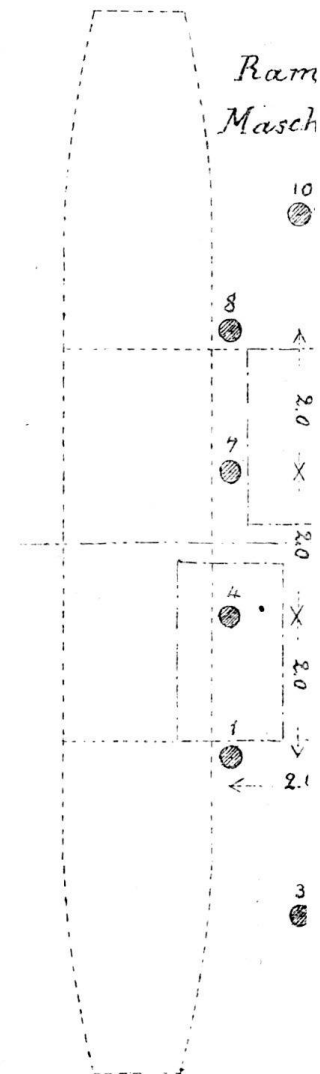
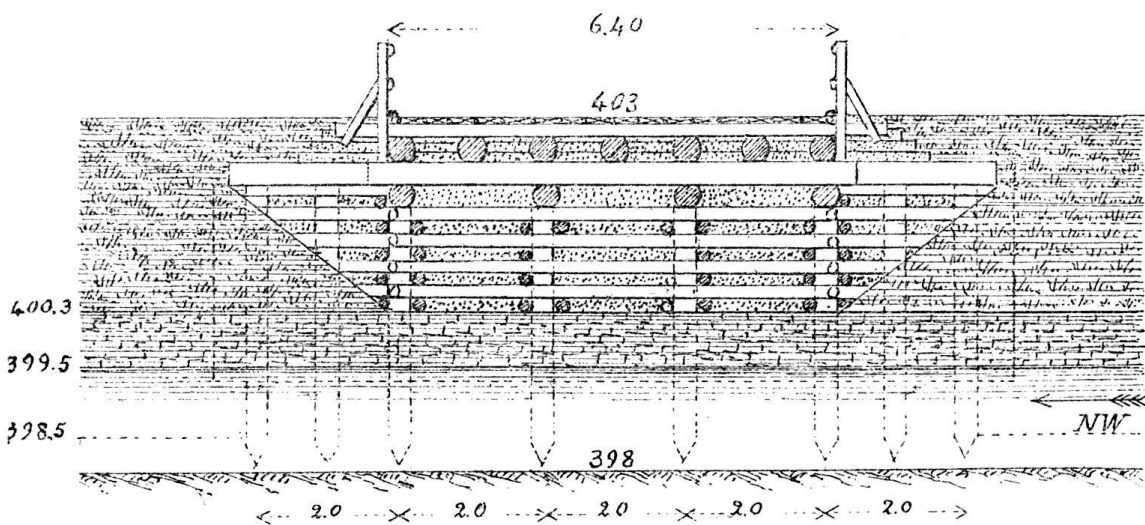
Längs-Profil 1:2500.



Joch



Widerlager

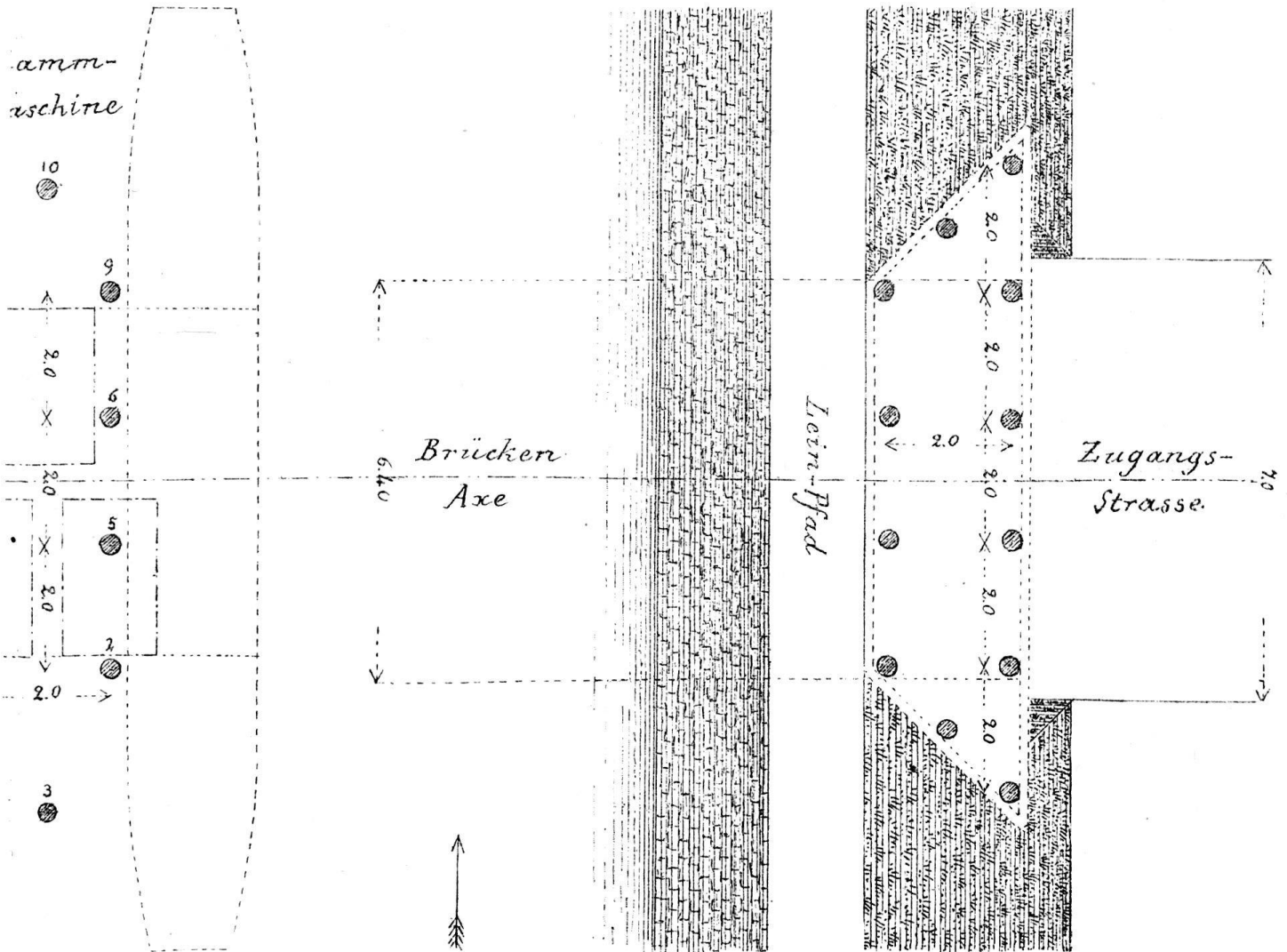
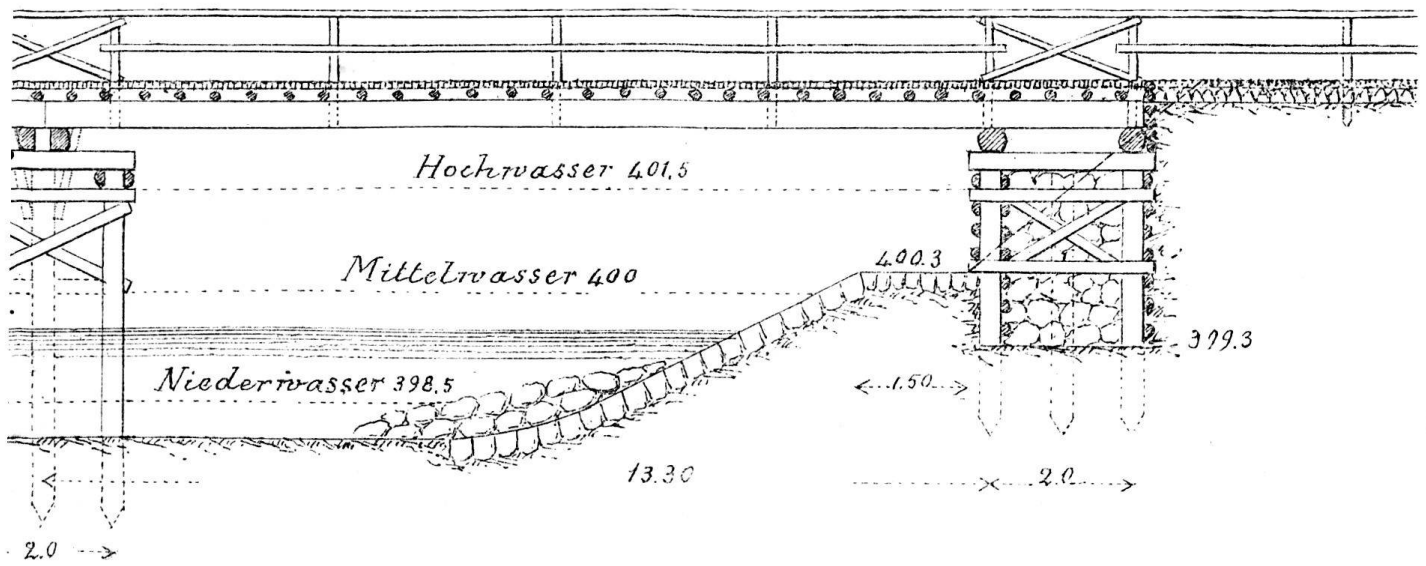


1:125



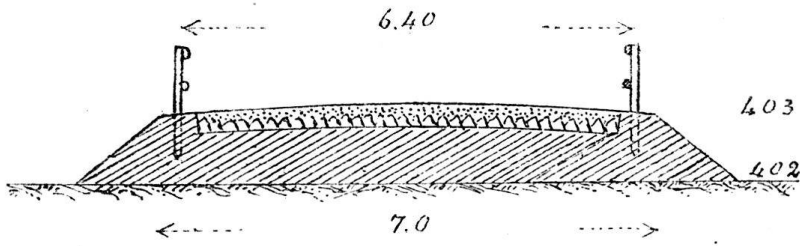
Alle Rechte vorbehalten.

# Stahljoch-Brücke

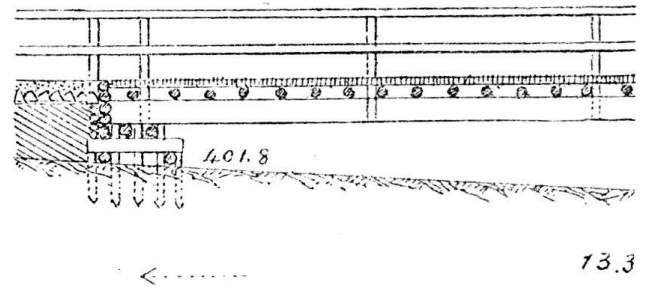




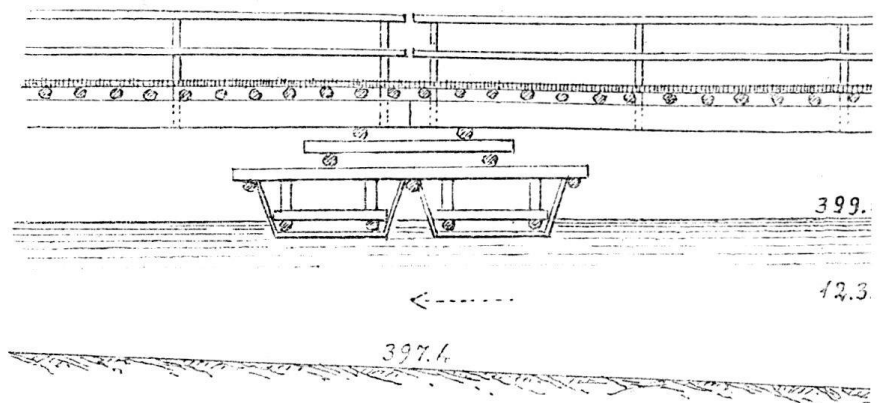
Damm



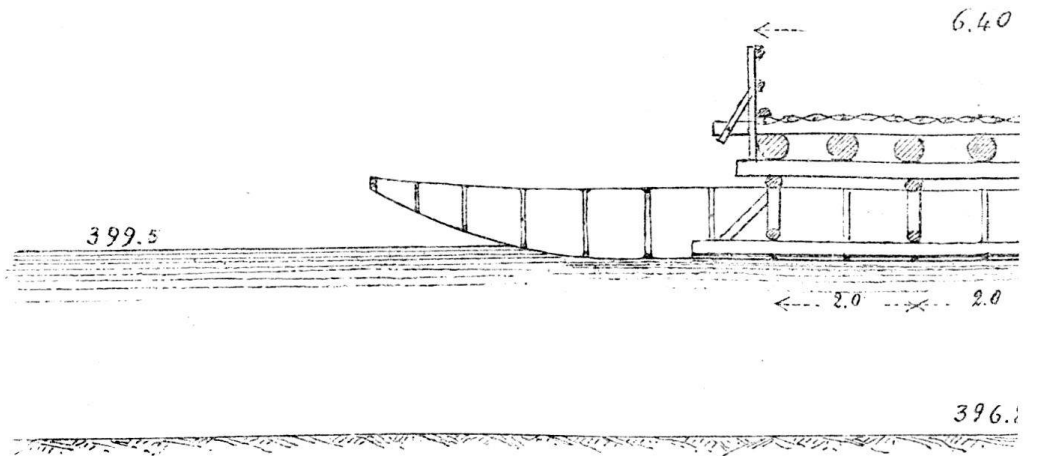
Holzstappe



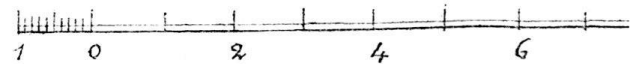
Schiff-D.



Schiffs-Aus

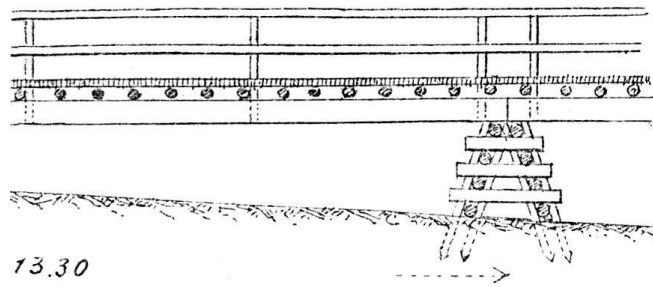


1:15

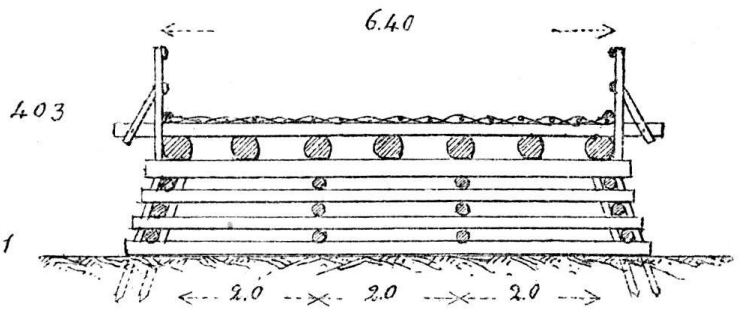


Alle Rechte vorbehalten

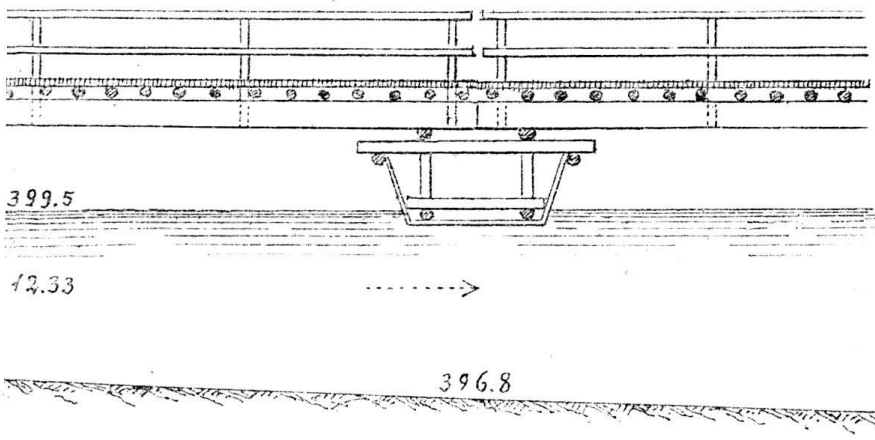
appel-Krücke



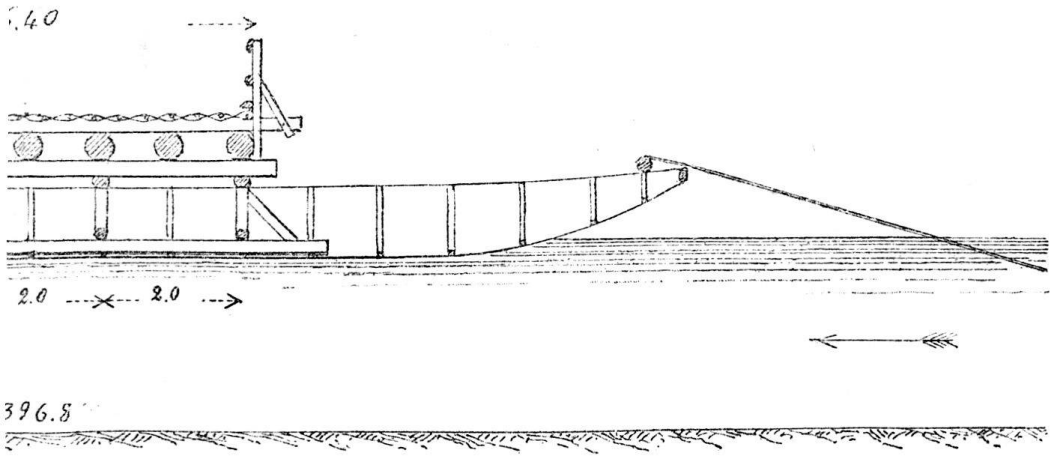
Holz-Stapel



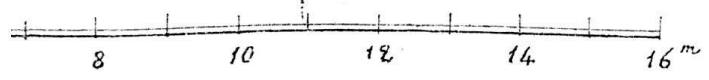
-Krücke



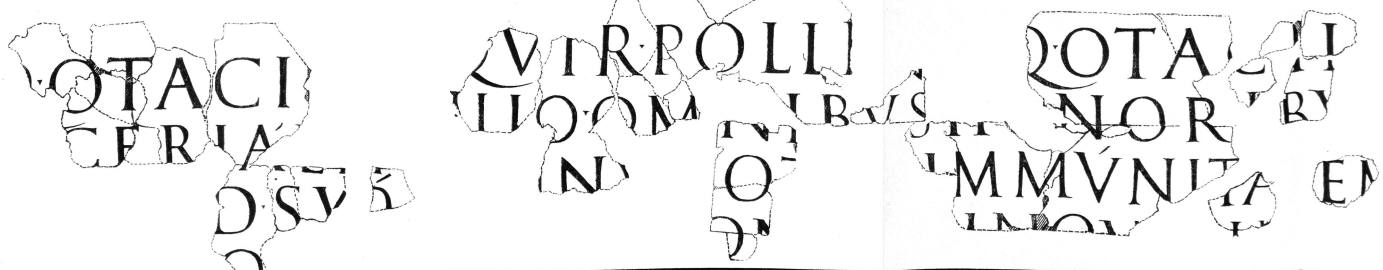
Ausrüstung



1:12.5.



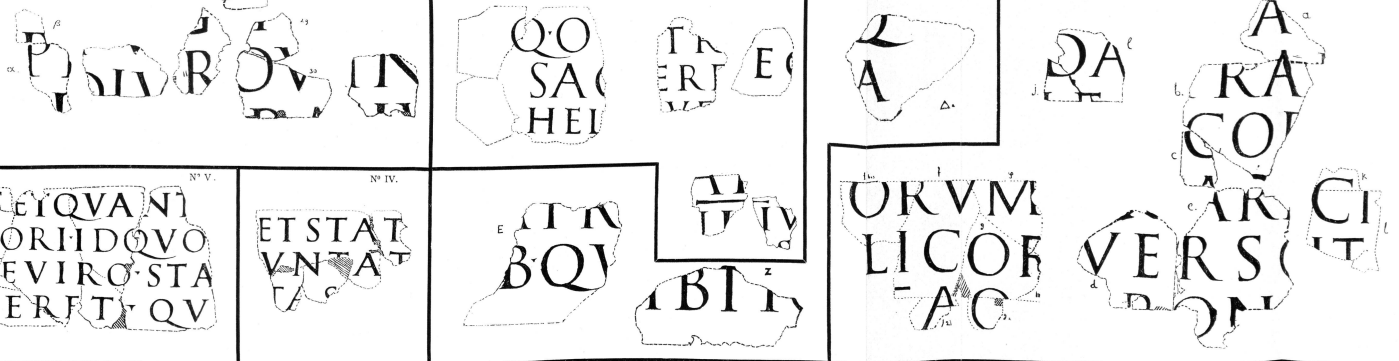
N° I.



N° III.

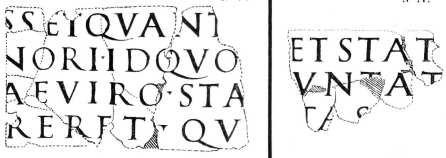
N° VI.

N° II.

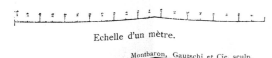


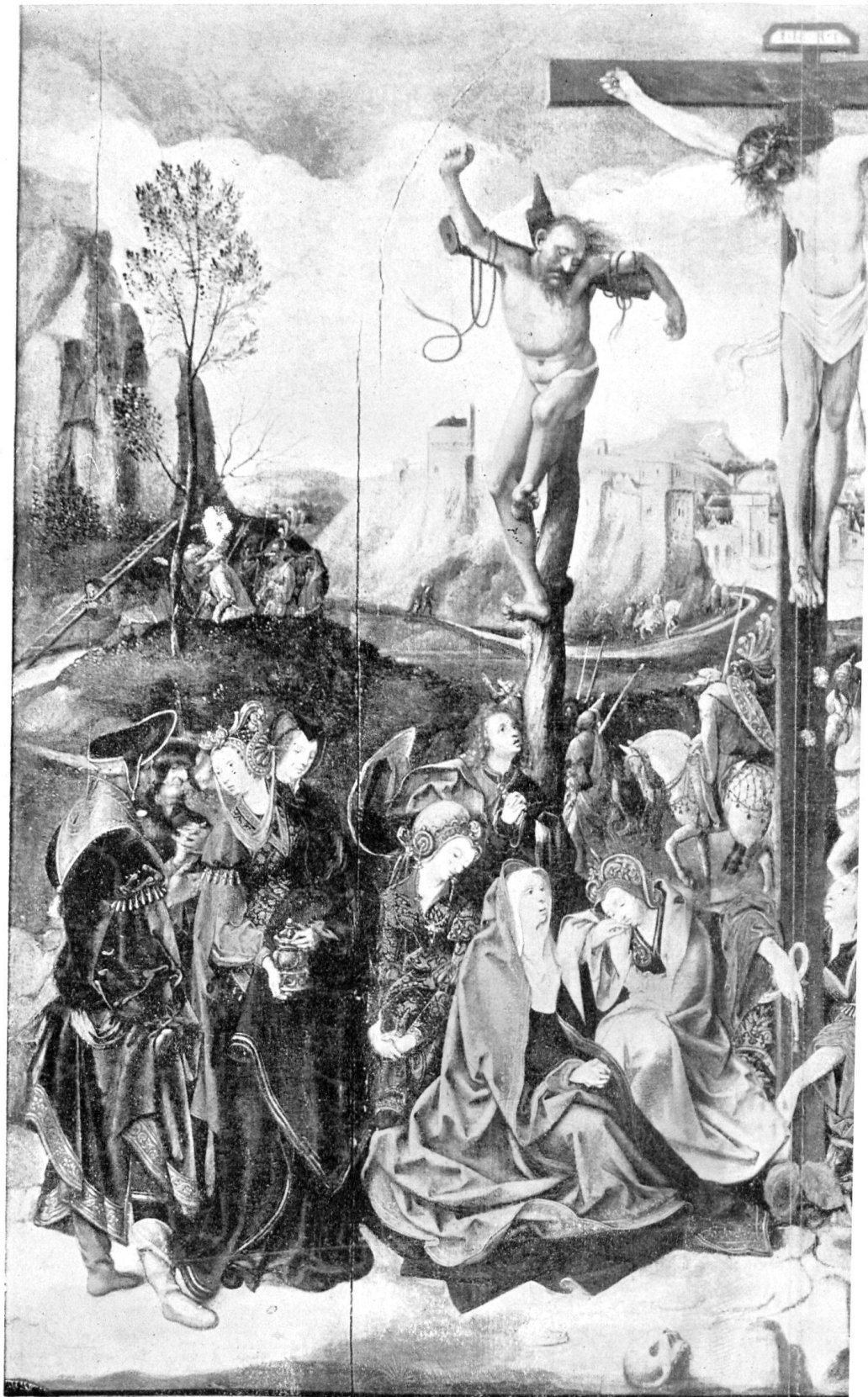
N° V.

N° IV.



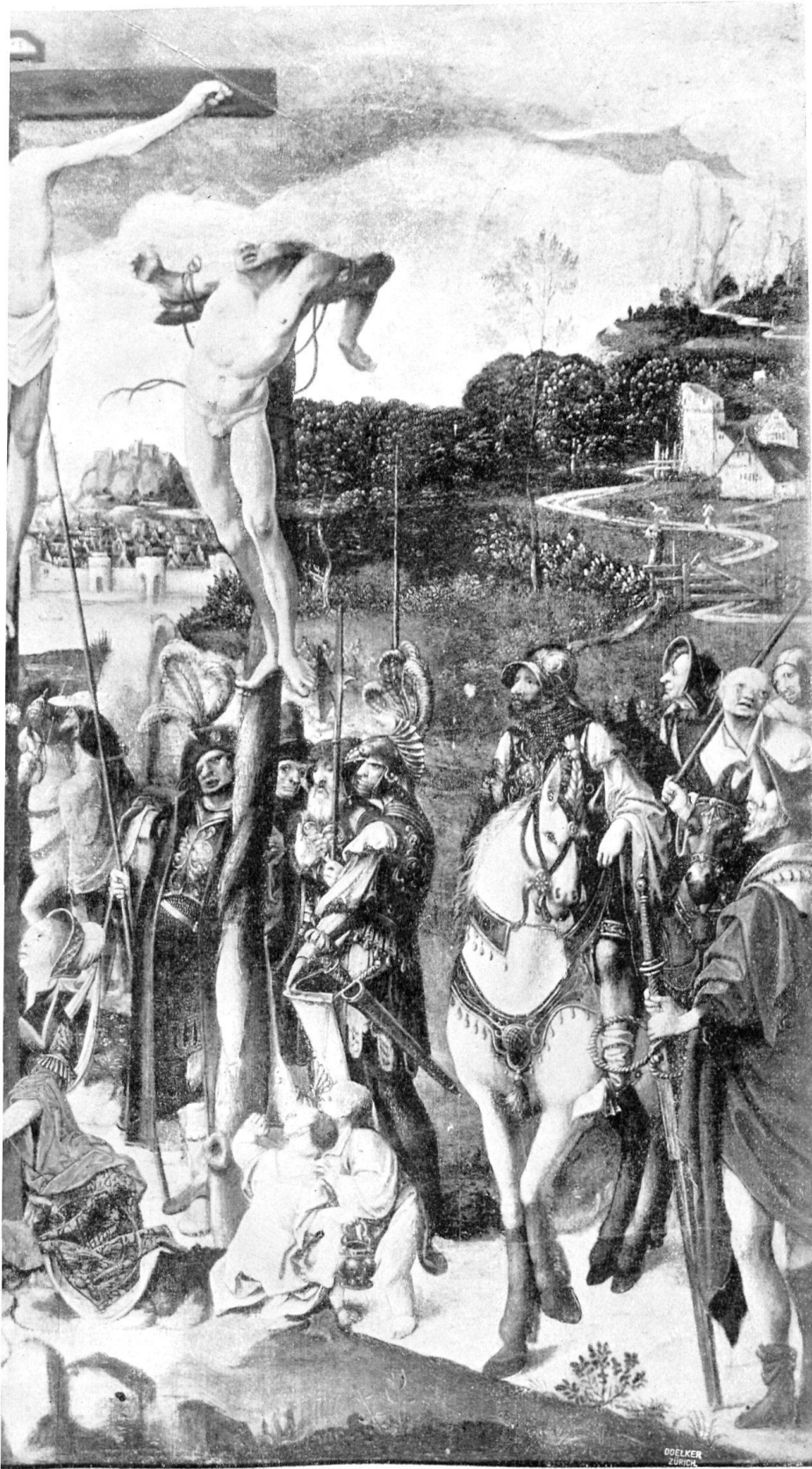
Inscriptions Romaines trouvées à la Conchette Jomini à Avenches 1899—1902  
 d'après les estampages de W. Wavre.





Calvarienberg von Corne

Im Besitze von Frau Prof. I



Arnoldus Engebrechtsz.

Prof. Bachofen in Basel.



Standbild auf dem Vierröhrigen (ehedem Metzger-) Brunnen  
in Schaffhausen.

Sépulture N° 29.

4 avril 1898.



*a.* Long. max.: 61 m.m.



*b.* Long. max.: 47 m.m.



*c.* Long. max.: 45 m.m.



*d.* Long. max.: 45 m.m.



Grabplatte Ulrich I. von Regensburg.  
Schweiz. Landesmuseum.





Festkleid des Andreas Wild von Wynigen aus dem Anfange des  
16. Jahrhunderts.

Bernisches hist. Museum in Bern.