

Zeitschrift: Das Werk : Architektur und Kunst = L'oeuvre : architecture et art
Band: 61 (1974)
Heft: 4: Energie und Wohnungsbau = Energie et habitation

Werbung

Nutzungsbedingungen

Die ETH-Bibliothek ist die Anbieterin der digitalisierten Zeitschriften auf E-Periodica. Sie besitzt keine Urheberrechte an den Zeitschriften und ist nicht verantwortlich für deren Inhalte. Die Rechte liegen in der Regel bei den Herausgebern beziehungsweise den externen Rechteinhabern. Das Veröffentlichen von Bildern in Print- und Online-Publikationen sowie auf Social Media-Kanälen oder Webseiten ist nur mit vorheriger Genehmigung der Rechteinhaber erlaubt. [Mehr erfahren](#)

Conditions d'utilisation

L'ETH Library est le fournisseur des revues numérisées. Elle ne détient aucun droit d'auteur sur les revues et n'est pas responsable de leur contenu. En règle générale, les droits sont détenus par les éditeurs ou les détenteurs de droits externes. La reproduction d'images dans des publications imprimées ou en ligne ainsi que sur des canaux de médias sociaux ou des sites web n'est autorisée qu'avec l'accord préalable des détenteurs des droits. [En savoir plus](#)

Terms of use

The ETH Library is the provider of the digitised journals. It does not own any copyrights to the journals and is not responsible for their content. The rights usually lie with the publishers or the external rights holders. Publishing images in print and online publications, as well as on social media channels or websites, is only permitted with the prior consent of the rights holders. [Find out more](#)

Download PDF: 05.04.2026

ETH-Bibliothek Zürich, E-Periodica, <https://www.e-periodica.ch>

Accum präsentiert ein komplettes Programm für Elektroheizung

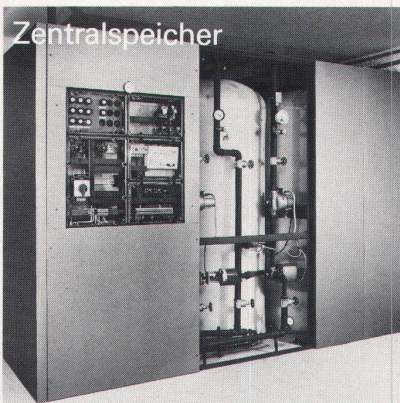
Seit den ersten Anfängen der Elektroheizung ist Accum dabei. Schon seit 50 Jahren. Gleichsam als Pionier. Wenn es galt, wirkliche Fortschritte zu erzielen. Und die Entwicklung voranzutreiben. So stellt sich heute das Programm dar: voll ausgereift. Es trägt allen Gegebenheiten modernen Heizkomforts Rechnung.

Einzelpeicher

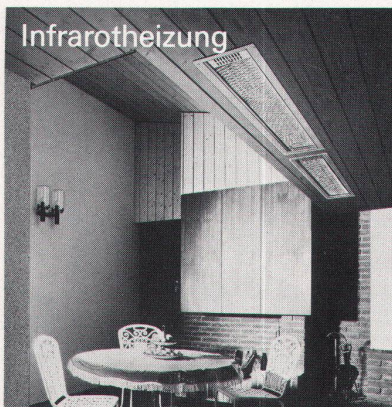


Direktheizkörper

Zentralspeicher



Infrarotheizung



Jetzt umstellen auf das krisensichere Heizen. Umstellen auf das fortschrittliche Accum-Heizsystem. Accum ist nicht umsonst seit 50 Jahren im Geschäft. Erfahrung braucht Zeit! Erfahrung, von der Sie profitieren. Durch ein Programm, das vom kleinen Direktheizkörper bis zur Grossanlage reicht.

Accum

Accum AG
Fabrik für wärmetechnische Apparate
8625 Gossau ZH Tel. 01 78 64 52

Senden Sie mir unverbindlich Ihre Unterlagen für Einzelpeicher/
Zentralspeicher/Direktheizkörper/Infrarotheizung/ Klima/Fachberatung.

Nichtzutreffendes bitte durchstreichen.

E3.1

Name: _____

Telefon: _____

Adresse: _____

conomic and industrial needs in Grenoble and its region.

There were three big overlapping phases covering a period of nearly 10 years:

1. The Olympic Village, low-cost housing, plus the west housing complex.
2. A group of 3500 housing units, of which 2500 are low-cost units, situated on the north: Harlequin.
3. A group of 7500 units, with an industrial zone offering 4500 jobs.

The aims

The basic idea and the unique feature of this complex is to have taken account of the "deracinated" character of the future residents, that is to say: migrant workers, former rural dwellers, immigrants of all nationalities. It was therefore necessary to confront the problem of lack of social life engendered often by the working conditions of most people in these segments of the population (physical fatigue, time devoted to travelling to and from work, long hours on the job, etc...).

With the assistance of the architects Loiseau and Tribel and the landscape architects Corajoud and Ciriani, a special effort was made to integrate installations as closely as possible in daily life. The first measure was the creation of a pedestrian street, at ground-floor level, in direct connection with the public amenities.

The latter were planned in the open with polyvalent use, adapted to children, teenagers or adults. There was also provided an educational-cultural team system with teaching, cultural events and everyday problems being integrated.

Two important elements, first of all, modify the area:

- The vaulting.
- The use of colour and publicity - which catalyse and animate the complex with great success and also, at times, with a certain awkwardness. Then there are mixed up all sorts of functions, vertical

or horizontal connections, which make of this street a veritable architectural bric-à-bac, which is extremely appealing.

- Vertical connections: lifts and access stairs come down to street level. But the entrance hall and letter-boxes are located in a glass cage inserted in the structure at the upper floor level, a true area of transition between street and flat.

Realization

The street

This is certainly the essential element of the complex. Because this street is alive. The architects have created two street levels, with one underneath the buildings. In this reserved area many needs, functions and also space-determining aims are densely clustered.

The elevated footbridges

The street is also varied by the elevated footbridges giving access to other areas.

The horizontal connections

The immediate proximity of the installations considerably enhances the quality of the street, giving rise to a succession of areas, closed, open, semi-closed, transparent, opaque, etc.

Impression and reality

This street is truly alive; the building plan in setting up differentiated poles, implies continuous traffic. Some children play in the street, others roller-skate or simply sit on red-checked benches. Life becomes more intense near schools or in the shopping street. Here the shops have simply been slipped into the structure - and one has the impression that this street may change in the future. Other shops will fill in the structure.

Finally, we must stress the very important role played by colour here, which accentuates the general impression.

The outdoor spaces

Two considerations have influenced the organization of the grounds: the notion of the urban park and the notion of countryside. It was necessary, in fact, to create a reserve of parkland that 15000 residents would be induced too frequent. Therefore it was necessary to satisfy all the needs of a varied population: play areas for infants, a lake, a market, a central square, open-air theatre, promenade for the aged, etc.

However, it was also necessary to create a landscape on a flat site. Thus eight mounds were created for the sake of variety and to provide look-out points.

At the foot of the buildings, there are masses of trees that soften the effect of the buildings. On the diagonal, the promenade follows the movement suggested by the mounds, and the result is a new relief. Within this context the various installations required for life in the open air can be set up.

Conclusion

In conclusion, we can say that the Harlequin district represents a high level of urban development, based on a reasonable functionalism, with due regard for future residents; but from the architectural standpoint it is open to criticism. *P.L. Faloci*

Current architectural events in Spain

(See page 457)

In this article, our correspondent in Spain, the architect César Ortiz-Echagüe of Madrid, presents the most important architectural developments in Spain. The reader will find here a series of photos that will give him an idea of the various trends in contemporary Spanish architecture.

Oswald zeigt:

den Korpus zum Arbeitstisch
den Korpus mit Vollauszügen
den Korpus für die Registratur
den Korpus für die kleine Kasse
den Korpus der abschliessbar ist
den Stahlkorpus

Der Stahlkorpus mit seinem Fussgestell
aus naturfarbenem Eichenholz passt
in unser Normprogramm

Ph. Oswald
Schreinerei und Innenausbau AG
8154 Oberglatt ZH
Telefon 01/94 51 58

