

**Zeitschrift:** Swiss express : the Swiss Railways Society journal  
**Herausgeber:** Swiss Railways Society  
**Band:** - (2016)  
**Heft:** 125  
  
**Rubrik:** Where's Heidi?

### **Nutzungsbedingungen**

Die ETH-Bibliothek ist die Anbieterin der digitalisierten Zeitschriften auf E-Periodica. Sie besitzt keine Urheberrechte an den Zeitschriften und ist nicht verantwortlich für deren Inhalte. Die Rechte liegen in der Regel bei den Herausgebern beziehungsweise den externen Rechteinhabern. Das Veröffentlichen von Bildern in Print- und Online-Publikationen sowie auf Social Media-Kanälen oder Webseiten ist nur mit vorheriger Genehmigung der Rechteinhaber erlaubt. [Mehr erfahren](#)

### **Conditions d'utilisation**

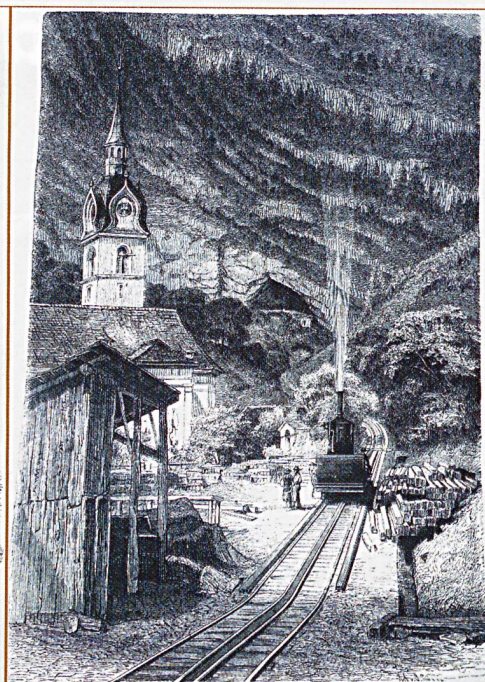
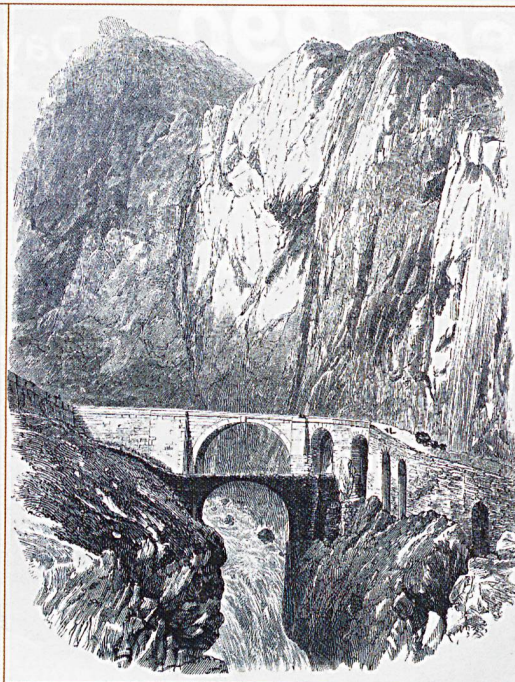
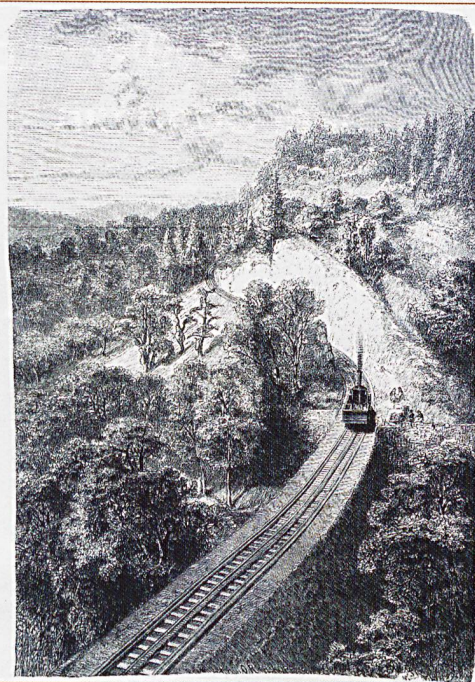
L'ETH Library est le fournisseur des revues numérisées. Elle ne détient aucun droit d'auteur sur les revues et n'est pas responsable de leur contenu. En règle générale, les droits sont détenus par les éditeurs ou les détenteurs de droits externes. La reproduction d'images dans des publications imprimées ou en ligne ainsi que sur des canaux de médias sociaux ou des sites web n'est autorisée qu'avec l'accord préalable des détenteurs des droits. [En savoir plus](#)

### **Terms of use**

The ETH Library is the provider of the digitised journals. It does not own any copyrights to the journals and is not responsible for their content. The rights usually lie with the publishers or the external rights holders. Publishing images in print and online publications, as well as on social media channels or websites, is only permitted with the prior consent of the rights holders. [Find out more](#)

**Download PDF:** 07.01.2026

**ETH-Bibliothek Zürich, E-Periodica, <https://www.e-periodica.ch>**



Railway on the Rigi.

The Devil's Bridge on the St. Gothard Road.

Vitznau Station on the Rigi.


## In Praise of the Swiss Railway System

David Bisno thanks the SBB


Last September, after five lovely days in the Cotswolds, at 07.45 my wife and I boarded our first train of the day in Moreton-in-Marsh. At 21.00 the same day we exited our sixth train of the day on the shore of Lake Luzern. All fine and good. Five days later, while waiting on the platform of the Hauptbahnhof in Luzern for the train to Lugano, I treated myself to a bratwurst wrapped in fine, flaky filo dough – yummy! So much did I enjoy that treat, and so distracted by the filo flakes falling on my blue blazer, that I failed to notice my wallet containing our two US passports and two US global entry cards fall to the floor. After the scenic trip over the Gotthard route, 15 minutes before arrival in Lugano I reached for my blue blazer hanging on the hook beside the window. Panic! No wallet. No passports in the usual breast pocket. That is always the site of my sacred documents. With 14 minutes available for a search for the missing wallet – time and Swiss trains wait for no man - my heart beat faster and faster as the minutes ticked away. No passports! I became a “basket case” of embarrassment, frustration, anger and chagrin, all directed at myself.

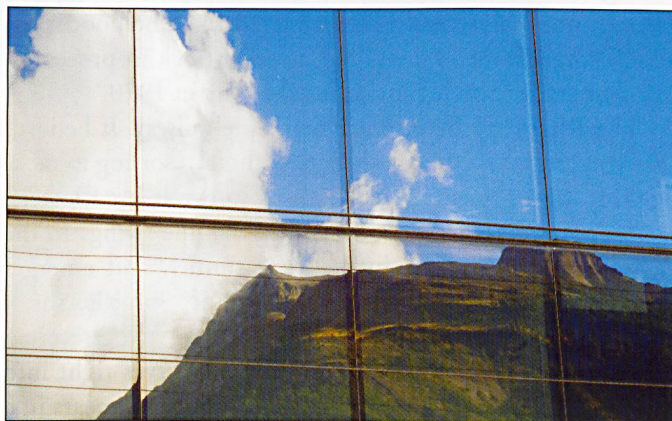
Upon exit from the train in Lugano, we went to the SBB Internet website and filled out their form for ‘lost articles’. Despondency and depression were now replacing my simple embarrassment and chagrin. Once at the hotel I learned from my laptop that a trip to the US Embassy in Bern would be necessary. Appointments would have to be scheduled. I would need to supply a Swiss Police Report, some form of personal identification and two passport photos of each of us, exactly 5 cm x 5 cm. I would need to purchase two return train tickets from the south of Switzerland to the north and find a room in super busy Bern for an overnight stay. All this was done, taking up the better part of a day in Lugano while we reconciled ourselves to having to cut short our stay on

Lake Como.

Four days later, on a Friday, after accepting the fact that we would never see our passports again and that we must cut short our time in Bellagio and get ourselves to the US Embassy in Bern - miracle of Swiss miracles! My cell phone was ringing with a message: The SBB had located my wallet. If I appeared at the SBB ticket counter in Lugano at exactly 13.00 on Monday, with exactly CHF20, I would be handed my documents that had dropped to the station floor in Luzern. A kind and honest person had handed-in my wallet and because of the SBB's interconnections between the lost and found departments of every station in Switzerland, I am happy to write that this is exactly what occurred. What a pleasure to be able to cancel our appointments in Bern. All praise to the SBB! 

## Where's Heidi?

Have you noticed this scenic reflection whist standing on a well-known station ? See page 47 for the answer. 




## Where's Heidi?

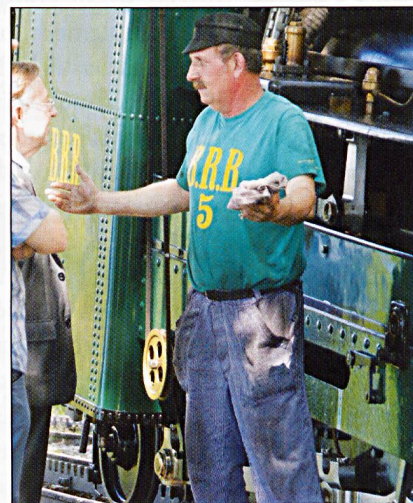
If you're lucky and observant, you might just see the reflection of a BLS train descending the south ramp whilst you stand on Visp station, though not in this image.

As with the previous 'Where's Heidi?', the moral is to always look up at buildings. Many facades are interesting. 



## And finally...

An animated Kurt Amacher, who drives the old steam engines on the Brienzer Rothorn Bahn, explains something to an interested onlooker at Geldried in July 2015. "It's real, I saw it, this big, there in the tank" - at least we think that's what he was saying! 



## The Alpine Railway Specialists TOP QUALITY SWISS RAILWAY DVDs FROM MITV



### FURTHER INFORMATION

For further information about the full MITV range of DVDs, and a description of each programme, please contact us and ask for a free brochure. Alternatively please visit our website which gives more details of our titles.

### ENTHUSIASTS SPECIALS

Heli-View Albula Line  
Heli-View Bernina Line  
SBB Bellinzona Works  
Blonay-Chamby Railway Museum  
Brienzer Rothorn Railway

Each DVD R £19.95

### JUNGFRAU RAILWAYS ON DVD

#### Jungfrau Railways 1 (BOB/SPB/BLM) Jungfrau Railways 2 (WAB/JB)

A two part exploration of this scenic railway network around Interlaken in the Bernese Oberland region.  
English commentary. DVD R, PAL only.

DVD Double set £33.00

### THE IRON WAY - GRANITE ALP SERIES

Broadcast quality TV productions with full stereo sound English commentary

- Jungfrau Railways 1 (BOB/SPB/BLM)
- Jungfrau Railways 2 (WAB/JB)
- The RhB Vereina Line (Sculi-Landquart)
- The RhB Engadine Line (St. Moritz-Sculi)
- BLS Lötschbergbahn (Brig-Thun)
- Gotthard North (Zürich-Göschenen)
- Gotthard South (Chiasso-Airolo)
- Chemins de fer du Jura (La Chaux-Glovelier)
- Emmentaler Railways 1 (Moutier-Solothurn-Thun)
- Emmentaler Railways 2 (Langenthal-Langnau-Huttwil)
- GFM 1: The Gruyère Line (Palézieux-Montbovon)
- Appenzeller Railways (Gossau-Appenzell-St.Gallen)
- Bodensee-Toggenburg (Rapperswil-Romanshorn)
- SBB Brünig Line 1 (Interlaken-Meiringen)
- SBB Brünig Line 2 (Meiringen-Luzern)
- The MOB Railway (Montreux-Zweisimmen)
- RhB Albula Line (Chur-St. Moritz)
- RhB Davos Line (Landquart-Davos-Filisur)
- RhB Arosa Line (Chur-Arosa)
- TPC 1: BVB Railway (Bex-Villars-Bretaye)
- TPC 2: The Aigle Lines (AL/AOMC/ASD)

Each DVD R £19.95

### SWITZERLAND IN CAMERA

Three tourism programmes about Switzerland.

English commentary.

R/T c.50 mins each.

**Switzerland in Camera 1: Beautiful Land**

**Switzerland in Camera 2: Glorious Graubünden**

**Switzerland in Camera 3: Lake Geneva & Canton Vaud**

Each DVD R £19.95

### GLACIER & BERNINA EXPRESS DVDs

#### Glacier Express

£19.95

A 2 disc set, one PAL and one NTSC, each containing our two Glacier Express programmes in five languages, plus slide collection.

R/T c.105 mins.

#### Bernina Express

£19.95

A PAL format disc containing our Bernina Express programme in four languages, with some specially shot add-on features.

R/T c.75 mins.

### CAB RIDES

- |                              |  |
|------------------------------|--|
| On the Footplate             | (Reichenau – Samedan)                                      |
| By Steam to Grindelwald      | (Interlaken Ost – Grindelwald)                             |
| Ae 8/14 Cab Ride             | (Zürich – Buchs)   |
| BOB Cab Ride                 | (Int.Ost – Lauterbrunnen & Grindelwald)                    |
| WAB Cab Ride                 | (Grindelwald & Lauterbrunnen – Kleine Scheidegg)           |
| BVB Winter Cab Ride          | (Bex – Col de Bretaye)                                     |
| CJ Cab Ride                  | (La Chaux-de-Fonds – Tavannes and Le Noirmont – Glovelier) |
| Furka-Oberalp                | (Andermatt – Disentis)                                     |
| RhB Davos Line x 2           | (Davos – Landquart)  |
| RhB Ge 4/4 II Rhine Cab Ride | (Disentis – Chur)  |
| SBB Re 6/6 Cab Ride          | (Chiasso – Airolo)   |
| Schynige Platte Guard        | (Wilderswil – Schynige Platte)                             |
- Each DVD R £19.95

All titles available from  
Swiss Railway Society Sales

MITV Ltd 15 Trent Way West End Southampton Hants SO30 3FW  
Tel: ++44 (0) 23 80473320 email: sales@mitv.co.uk www.mitv.co.uk