

**Zeitschrift:** Swiss express : the Swiss Railways Society journal  
**Herausgeber:** Swiss Railways Society  
**Band:** - (2014)  
**Heft:** 117

**Artikel:** Vierwaldstättersee postcard  
**Autor:** Marriott, Heidi  
**DOI:** <https://doi.org/10.5169/seals-854103>

### **Nutzungsbedingungen**

Die ETH-Bibliothek ist die Anbieterin der digitalisierten Zeitschriften auf E-Periodica. Sie besitzt keine Urheberrechte an den Zeitschriften und ist nicht verantwortlich für deren Inhalte. Die Rechte liegen in der Regel bei den Herausgebern beziehungsweise den externen Rechteinhabern. Das Veröffentlichen von Bildern in Print- und Online-Publikationen sowie auf Social Media-Kanälen oder Webseiten ist nur mit vorheriger Genehmigung der Rechteinhaber erlaubt. [Mehr erfahren](#)

### **Conditions d'utilisation**

L'ETH Library est le fournisseur des revues numérisées. Elle ne détient aucun droit d'auteur sur les revues et n'est pas responsable de leur contenu. En règle générale, les droits sont détenus par les éditeurs ou les détenteurs de droits externes. La reproduction d'images dans des publications imprimées ou en ligne ainsi que sur des canaux de médias sociaux ou des sites web n'est autorisée qu'avec l'accord préalable des détenteurs des droits. [En savoir plus](#)

### **Terms of use**


The ETH Library is the provider of the digitised journals. It does not own any copyrights to the journals and is not responsible for their content. The rights usually lie with the publishers or the external rights holders. Publishing images in print and online publications, as well as on social media channels or websites, is only permitted with the prior consent of the rights holders. [Find out more](#)

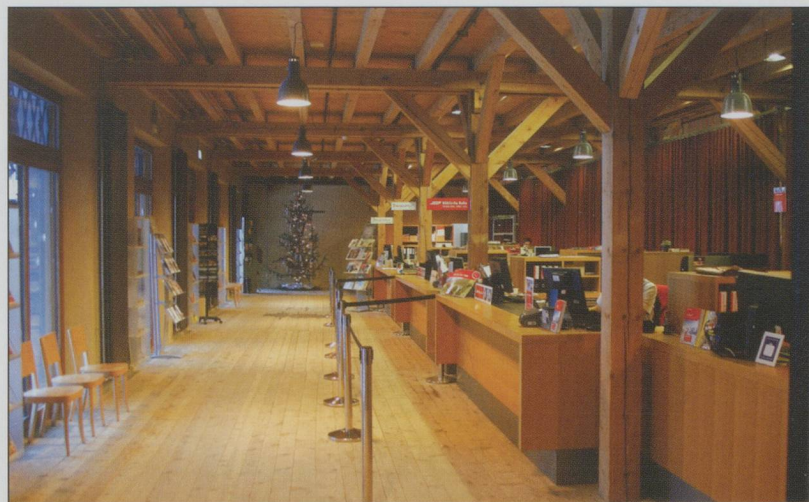
**Download PDF:** 23.01.2026

**ETH-Bibliothek Zürich, E-Periodica, <https://www.e-periodica.ch>**



but also in English. Additional features include a massive Om gauge model of the railway (this is still a work-in-progress although well worth seeing) and the preserved RhB 'Krokodile' that formerly was located nearby in the village. In one of the cabs of this historic loco the museum has set up an electronic simulator that allows visitors to 'drive' it along the tracks of the RhB. As a follow-up to their successful first year the museum has recently been nominated by the European Museum Forum as one of three Swiss contenders for the European Museum of the Year Award-2014, that will be presented in May in Tallin, Estonia.

For people who study railways, and the RhB in particular; Canton Graubünden; the social fabric of once isolated alpine valleys; the development of the tourist trade in this part of Switzerland, and many other linked areas of interest, the museum is now a 'must see' destination. Admission, by Edmonson card ticket, is reasonably priced at CHF15, with children at CHF11. In 2014 it will be open until November when there will be a short winter break until mid-December. We were ably guided around the complex by Gion Caprez and his colleague Werner Haas, whom we thank for their kind hospitality. For more information go to [www.bahnmuseum-albula.ch](http://www.bahnmuseum-albula.ch) but better still – go there. 



TOP: RhB's ticket office. BOTTOM: the café and shop.

## VIERWALDSTÄTTERSEE POSTCARD

Heidi Marriott

Searching through some old postcards in Totnes on the Saturday before Christmas, I found, amongst a collection of Swiss cards, the one reproduced here. Showing an early version of the well-known Swiss panoramic map, it looks out across the Vierwaldstättersee towards Fluelen. In the left foreground is Brunnen with a steamer loading at the quayside, but of more railway interest is the Brunnen-Morschach-Bahn climbing the mountain behind the town to Axenstein. Opened in 1905, this closed in 1969 to be replaced with a bus. Snaking its way along the lakeside is the Gotthardbahn heading through Fluelen and Erstfeld before disappearing behind the mountains. On the right can be seen the lakeside steamer stops at Rütli and Treib, where



the TSB funicular is shown heading up to Seelisberg. The date of the card is unknown as it was never written and posted, but the rear is printed with a stamp-square stating a 5 rappen stamp is required. The TSB opened in 1916 so the card is after this date, however if there is a philatelist out there who knows when that rate was valid it would be good to know. This interesting find shows that it is sometimes worth scanning through the collections of old postcards you see in second-hand and charity shops in the hope that you might find a gem. By the way, in another such shop in the old coin tin (10p per coin), I also found six current Swiss coins with a value of almost CHF5. It pays to rummage!!! 