

**Zeitschrift:** Swiss express : the Swiss Railways Society journal  
**Herausgeber:** Swiss Railways Society  
**Band:** - (2006)  
**Heft:** [3]  
  
**Artikel:** Into the heart of the Jura  
**Autor:** Savine, Gerry  
**DOI:** <https://doi.org/10.5169/seals-854805>

### **Nutzungsbedingungen**

Die ETH-Bibliothek ist die Anbieterin der digitalisierten Zeitschriften auf E-Periodica. Sie besitzt keine Urheberrechte an den Zeitschriften und ist nicht verantwortlich für deren Inhalte. Die Rechte liegen in der Regel bei den Herausgebern beziehungsweise den externen Rechteinhabern. Das Veröffentlichen von Bildern in Print- und Online-Publikationen sowie auf Social Media-Kanälen oder Webseiten ist nur mit vorheriger Genehmigung der Rechteinhaber erlaubt. [Mehr erfahren](#)

### **Conditions d'utilisation**

L'ETH Library est le fournisseur des revues numérisées. Elle ne détient aucun droit d'auteur sur les revues et n'est pas responsable de leur contenu. En règle générale, les droits sont détenus par les éditeurs ou les détenteurs de droits externes. La reproduction d'images dans des publications imprimées ou en ligne ainsi que sur des canaux de médias sociaux ou des sites web n'est autorisée qu'avec l'accord préalable des détenteurs des droits. [En savoir plus](#)

### **Terms of use**

The ETH Library is the provider of the digitised journals. It does not own any copyrights to the journals and is not responsible for their content. The rights usually lie with the publishers or the external rights holders. Publishing images in print and online publications, as well as on social media channels or websites, is only permitted with the prior consent of the rights holders. [Find out more](#)

**Download PDF:** 15.01.2026

**ETH-Bibliothek Zürich, E-Periodica, <https://www.e-periodica.ch>**

# Gerry Savine

## INTO THE HEART OF THE JURA



*Looking along the Avenue Lèpold-Robert from the Tour Espacité, La Chaux-de-Fonds. Photo: Gerry*

The regular SBB service to La Chaux-de-Fonds climbs steadily out of Neuchâtel into the heart of the Juras. With a reversal at Chambrelieu the route passes through a 3259 metre tunnel not far short of La Chaux-de-Fonds. The town is at the head of the valley to La Loc and on into France. Many of the world famous Swiss watch companies have their factories located between the towns.

La Chaux-de-Fonds is high up in the rounded mountains of the Juras and is noticeably cooler than down by the lake at Neuchâtel.

Although La Chaux-de-Fonds might not be considered an interesting town, this would be to underestimate the town's visual attraction.

At the northern end of the Avenue Lèpold-Robert, about 2-300 metres from the station, is the Tourist Office where a

walking tour of the town can be obtained. The Tourist Office can't be missed as it at the foot of Tour Espacité, a tall modern tower capped by a café and viewing gallery. The entrance to the tower is free and a fast lift takes you to the top. The views of the town and surrounding hills are quite spectacular. Returning to ground level you can't miss the Fontaine Monumentale which stands in the middle of a roundabout a few metres to the north; this will also be the end point of the walking tour.

The walking guide is a 20 page booklet with a route map and information to the sights in English, French and German. The copy for each numbered place of interest is accompanied by a small coloured photograph. Time didn't permit a complete walk. As the tour is circular it is easy to join where you like.

La Chaux-de-Fonds has many buildings



in the Art Nouveau style which are a delight to those with even the slightest interest in architecture.

The main town is set in a valley and you are soon guided uphill. The highest part of the walk is the Boisdu Petit Château which is a public park and zoo which you are free to wonder around.

The trail leads you back down into an older part of town where you will walk down the Rue du Manège where the CJ metre gauge line runs down the road to the station. At the bottom of the hill you will cross the Rue du Grenier which is the birth place of Louis Joseph Chevrolet who was later to become the famous car manufacturer in the USA.

You are now approaching the Parc de Musées that houses the history museum, art gallery and the Musée International d'Holographie. The modern underground museum could take up a lot of time as it tells the history of time keeping. In the park above the museum is the Carillon, a tubular bell time piece which plays a tune every quarter hour as panels of colour below the clock rotate. This museum alone is worth a visit to La Chaux-de-Fonds.

Prior to walking around the town two trains were taken to Les Brenets. After leaving the single car train at the station, the road and footpaths lead steeply downhill through the village to where the River Doubs widens out into the Lac de Brenets. By the side of the lake is the "Les Rives du Doubs" Minhotel. The restaurant that overlooks the water serves locally caught trout. The food is beautifully and



**TOP:** Fontaine Monumentale, La Chaux-de-Fonds

**BOTTOM:** Street running in La Chaux-de-Fonds

Photos: Toggenburg





**TOP:** The Carillon at the Musée International d'Holographie, La Chaux-de-Fonds.  
photo: Gerry Savine



**TOP LEFT:** Place du Marché, La Chaux-de-Fonds. Photo: Gerry Savine

**BOTTOM LEFT:** The boat from Les Brenets arriving at the Saut du Doubs Waterfalls landing stage. Photo: Gerry Savine



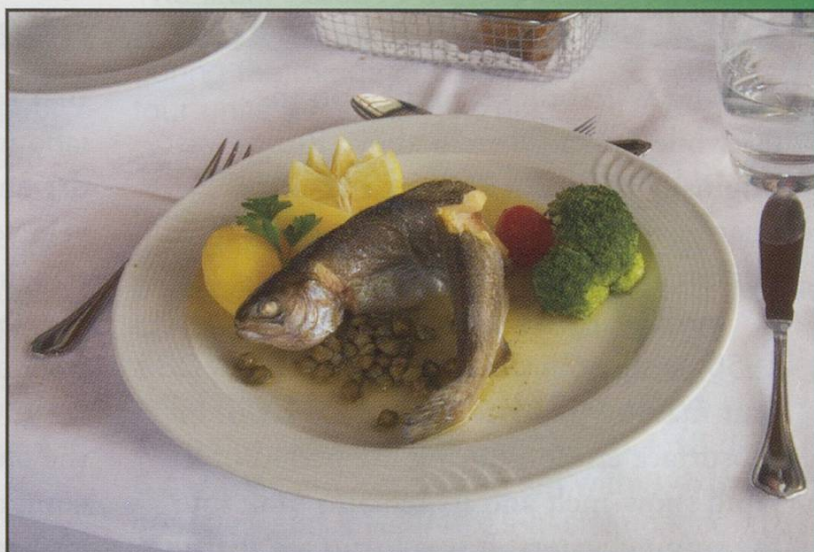
**BOTTOM:** Les Brenets station  
photo: Toggenburg



charmingly presented and at a reasonable price. Adjacent to the hotel is a boat landing stage with trips to the Saut du Doubs Waterfall. The glass enclosed boats, which were built by the owner, take you along the lake and between wooded cliffs to a footpath to the waterfall.

The path goes alongside what has now become river rapids before the river topples over the waterfall and turns sharp right to disappear between wood covered cliffs. At the time of this visit there was a new footbridge just above the waterfall linking Switzerland to France but had yet to be opened to the public. On returning to Les Brenets landing stage you are faced with a stiff walk back up to the station; the alternative is a taxi ride up which is offered by the boat company.

If you like outdoor activities you will love this area of Switzerland.



*Fresh locally caught trout beautifully presented at the "Les Rives du Doubs" Minhotel with views across the Lac de Brenets.*

Photo: Toggenburg

## SWITZERLAND



**INTERLAKEN – Mobile Homes & Apartments. Mobile homes on 5\* Lakeside site, Easter to October. Fantastic Swiss travel system with easy access to the superb alpine scenery. All at affordable prices.**

**We offer a very comprehensive Service Cross channel, Swiss Transport tickets, Colour brochure**

**Tel ++44 (0)1903 743193**  
**Email [info@altogold.com](mailto:info@altogold.com)**  
**Visit [www.altogold.com](http://www.altogold.com)**

**Please mention Swiss Express when replying.**

