

**Zeitschrift:** Swiss express : the Swiss Railways Society journal  
**Herausgeber:** Swiss Railways Society  
**Band:** - (2006)  
**Heft:** [1]

## Werbung

### Nutzungsbedingungen

Die ETH-Bibliothek ist die Anbieterin der digitalisierten Zeitschriften auf E-Periodica. Sie besitzt keine Urheberrechte an den Zeitschriften und ist nicht verantwortlich für deren Inhalte. Die Rechte liegen in der Regel bei den Herausgebern beziehungsweise den externen Rechteinhabern. Das Veröffentlichen von Bildern in Print- und Online-Publikationen sowie auf Social Media-Kanälen oder Webseiten ist nur mit vorheriger Genehmigung der Rechteinhaber erlaubt. [Mehr erfahren](#)

### Conditions d'utilisation

L'ETH Library est le fournisseur des revues numérisées. Elle ne détient aucun droit d'auteur sur les revues et n'est pas responsable de leur contenu. En règle générale, les droits sont détenus par les éditeurs ou les détenteurs de droits externes. La reproduction d'images dans des publications imprimées ou en ligne ainsi que sur des canaux de médias sociaux ou des sites web n'est autorisée qu'avec l'accord préalable des détenteurs des droits. [En savoir plus](#)

### Terms of use

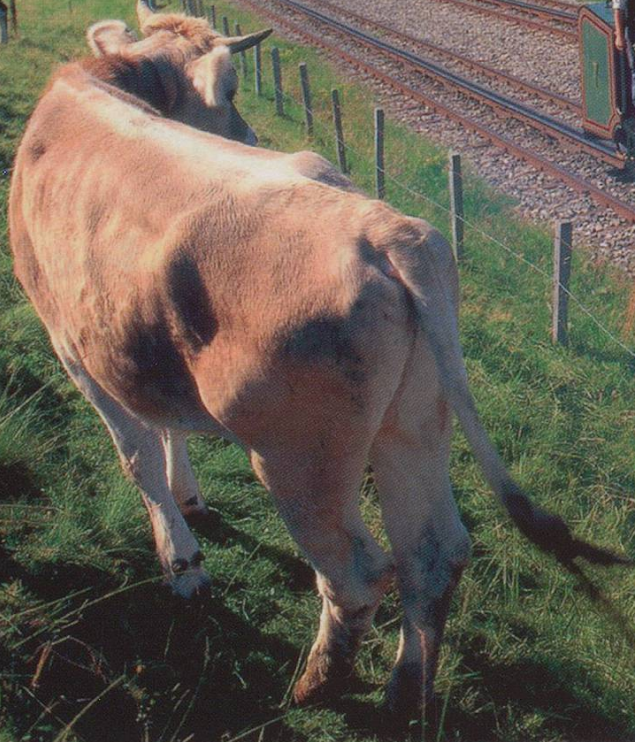
The ETH Library is the provider of the digitised journals. It does not own any copyrights to the journals and is not responsible for their content. The rights usually lie with the publishers or the external rights holders. Publishing images in print and online publications, as well as on social media channels or websites, is only permitted with the prior consent of the rights holders. [Find out more](#)

**Download PDF:** 14.04.2026

**ETH-Bibliothek Zürich, E-Periodica, <https://www.e-periodica.ch>**

# Silver Jubilee Special Offer

7% discount on Swiss Passes for  
members of the society\*



## Rail Holidays in Switzerland

Flights, Hotels, Apartments, Swiss Passes,  
Swiss Flexi Passes, Family Cards, Fly Rail  
Baggage and more



For bookings and Information

Call 0207 420 4900

[www.swisstravelsystem.co.uk](http://www.swisstravelsystem.co.uk)

\* To get your 7% discount on Swiss Passes quote "Swiss Railways Society offer" on the phone or online (in the notes field on the payment screen). Offer valid for bookings till 31 December 2006. Only valid for members of the Swiss Railways Society.

# **WINCO** *The Home of Swiss Model Railways*

Formed over 16 years ago specifically to supply those continental models seen abroad but unavailable in the UK. The company has gone from strength to strength and the husband and wife team now import direct from the world's leading model railways.

**Our phone no. is (0) 1962 869301  
and we are normally available Monday to Friday 10.00 am to 9.00 pm  
and Saturday 10 am to 6 pm  
Our fax line (0) 1962 878788 is open 24 hours a day.**

# Hotel Restaurant Grischuna

**Filisur**  
Graubünden  
SWITZERLAND

Familie R. + A. Uffer Phone (from U.K.) 00 41 81 4041180  
CH - 7477 Filisur/GR Fax (from U.K.) 00 41 81 4042480  
E-mail: [info@grischuna-filisur.ch](mailto:info@grischuna-filisur.ch) Internet: [www.grischuna-filisur.ch](http://www.grischuna-filisur.ch)



Peaceful and sunny, directly opposite the station (Bernina, Heidiland and Glacier Express stop here!)

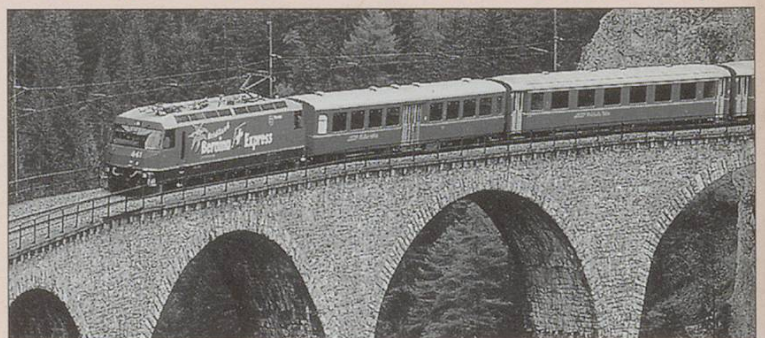
- ★ Comfortable rooms all with toilet, bath/shower, radio and TV. Some with balconies overlooking the Albula valley and famous railway.
- ★ Excellent meals at reasonable prizes in our new panoramic restaurant.
- ★ English spoken

Special summer and winter arrangements in conjunction with all Rhätische Bahn activities

## ASK FOR OUR LEAFLET!

Only fifteen minutes walk to the world-famous Landwasser Viaduct! Enjoy the benefits from a visit to the Alvanu Bad

*Grüezi und  
herzlich willkommen*



## SPECIAL OFFER

All in prices this Summer:

One week (seven nights): Bed, Breakfast and  
4 course evening meal from SFr595

As above but with season ticket on the Rhätische Bahn from SFr745

Please note that local visitor tax at SFr1.80 per day per person is payable locally.