

**Zeitschrift:** Swiss express : the Swiss Railways Society journal  
**Herausgeber:** Swiss Railways Society  
**Band:** 6 (2000-2002)  
**Heft:** 4

**Artikel:** The autumn flooding in Valais  
**Autor:** Hemming, Brian  
**DOI:** <https://doi.org/10.5169/seals-854890>

### **Nutzungsbedingungen**

Die ETH-Bibliothek ist die Anbieterin der digitalisierten Zeitschriften auf E-Periodica. Sie besitzt keine Urheberrechte an den Zeitschriften und ist nicht verantwortlich für deren Inhalte. Die Rechte liegen in der Regel bei den Herausgebern beziehungsweise den externen Rechteinhabern. Das Veröffentlichen von Bildern in Print- und Online-Publikationen sowie auf Social Media-Kanälen oder Webseiten ist nur mit vorheriger Genehmigung der Rechteinhaber erlaubt. [Mehr erfahren](#)

### **Conditions d'utilisation**

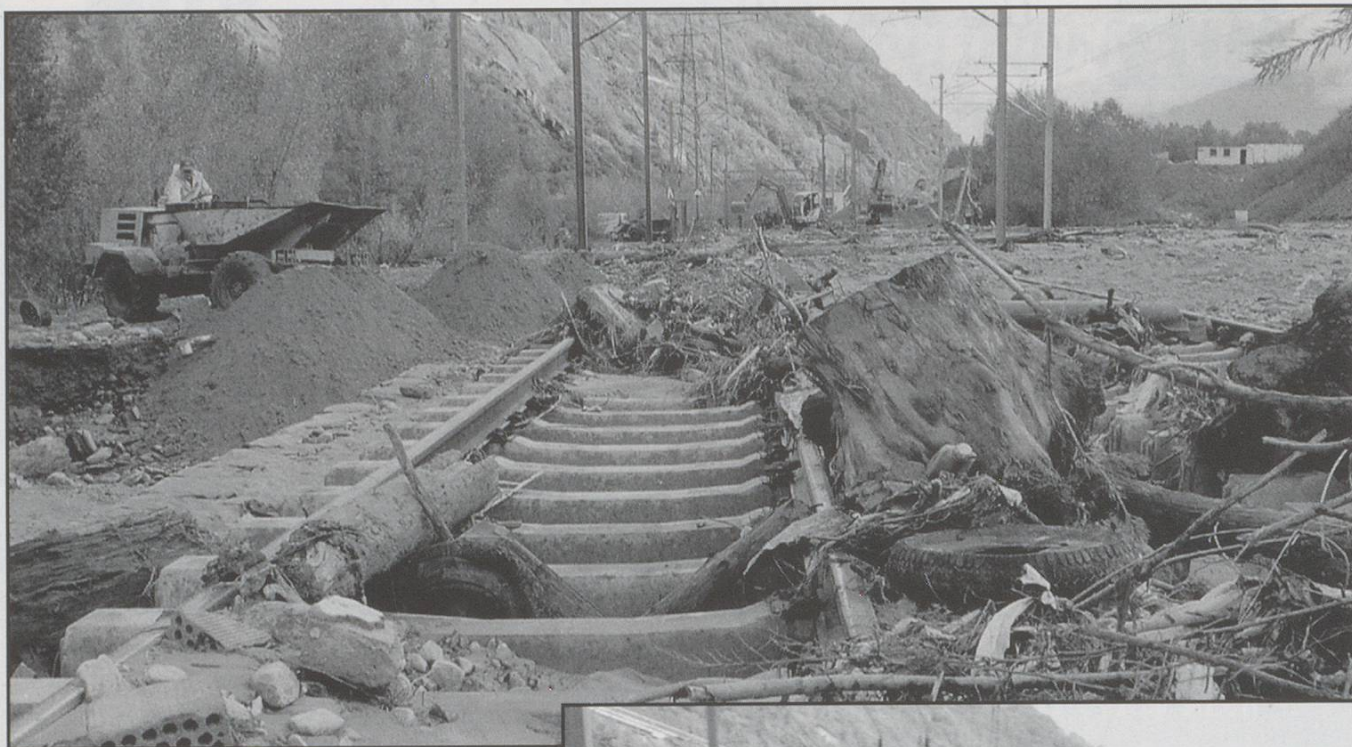
L'ETH Library est le fournisseur des revues numérisées. Elle ne détient aucun droit d'auteur sur les revues et n'est pas responsable de leur contenu. En règle générale, les droits sont détenus par les éditeurs ou les détenteurs de droits externes. La reproduction d'images dans des publications imprimées ou en ligne ainsi que sur des canaux de médias sociaux ou des sites web n'est autorisée qu'avec l'accord préalable des détenteurs des droits. [En savoir plus](#)

### **Terms of use**

The ETH Library is the provider of the digitised journals. It does not own any copyrights to the journals and is not responsible for their content. The rights usually lie with the publishers or the external rights holders. Publishing images in print and online publications, as well as on social media channels or websites, is only permitted with the prior consent of the rights holders. [Find out more](#)

**Download PDF:** 05.08.2025

**ETH-Bibliothek Zürich, E-Periodica, <https://www.e-periodica.ch>**



*Two digital photos showing the severe damage between Brig and Visp. The BVZ line can be seen on the right.*

*Photos: Courtesy Fotoservice SBB*

After the considerable disruption to the railway network in Switzerland earlier in the year due to the effects of snow and wind, further problems arose in the middle of October as a result of very heavy rainfall.

Heavy rain fell on the 14th and 15th October, and by lunchtime on the 15th the situation was so severe with flooding and landslides that the local police were recommending that no cars be driven in the Canton. A number of railway lines were affected and it was not until early November that services in the region were fully restored. The most serious flood damage was between Brig and Leuk (SBB) and Brig and St Niklaus (BVZ). Both the SBB and the BVZ have acknowledged the help provided by the military in restoring their lines, which happened much sooner than had been originally anticipated. As a direct result of the problems and the closures of both the Simplon and Mont Cenis Tunnels, a record 170,202 tonnes of freight was transported over the Gotthard line on 19th October.





## 15th October

At lunchtime the following lines were reported as closed:

SBB	-	Sierre - Brig - Domodossola St Maurice - Sion - trains from Lausanne turned at St Maurice St Maurice - St Gingolphe
BLS	-	Kandersteg - Brig - local service only Spiez - Kandersteg
BVZ	-	Brig - Zermatt
FO	-	Brig - Oberwald - the road was also closed
MO	-	Martigny - Orsières
TPC	-	Bex - Gryon - reopened (date not known) but train observed on 30th October

## 16th October

SBB	-	St Maurice - Martigny - service resumed during afternoon St Maurice - St Gingolphe - service resumed Cadenazzo - Luino - trains replaced buses due to flooded road!
BLS	-	Kandersteg - Brig - the first northbound InterCity train left Brig at 11:00 hrs
BVZ	-	Brig - Zermatt - bus replacement service in place Brig - St Niklaus. It was reported that 15 km of track had been damaged and it was not sure whether there would be through trains before the end of the year.
FO	-	Brig - Oberwald - trains working through the base tunnel from Andermatt to Oberwald, where there is a bus connection to Betten. From here it was only possible to take the cable car to Bettmeralp, walk to Riederalp, down the cable car to Ried-Mörel and then by road to Brig.
MO	-	Martigny - Orsières - service resumed

## 17th October

SBB	-	Martigny - Sierre - trains start working again Sierre - Brig - bus replacement service in place
BLS	-	Kandersteg - Goppenstein - autoverlad restarted
FO	-	Brig - Oberwald - bus replacement service in place

## 19th October

BVZ	-	St Niklaus - Zermatt - reopened
-----	---	---------------------------------

## 20th October

SBB	-	Brig - Domodossola - because of a landslide danger near Iselle, the line remained closed
FO	-	Oberwald - Fiesch - reopened. Glacier Express restarted with a bus connection between Fiesch (FO) and St Niklaus (BVZ)

## 21st October

SBB	-	Brig - Domodossola - regional services restart. There was still a danger of landslides, and if one had occurred would have caused problems rerouting long distance trains at short notice.
-----	---	--

## 23rd October

SBB	-	Brig - Domodossola - Bern - Milano services restart.
BLS	-	Brig - Domodossola - Car transporter services in operation because Simplon road is still closed.

## 25th October

SBB	-	Brig - Leuk - regional services restart Brig - Sierre - remained closed for through traffic.
-----	---	---

## 3rd November

FO	-	Brig - Fiesch - scheduled to reopen
----	---	-------------------------------------

## 8th November

SBB	-	Brig - Sierre - scheduled to reopen for through traffic. The first scheduled working to be train 220 Venezia - Geneva which departs Brig at 04:20 hrs.
BVZ	-	Brig - St Niklaus - scheduled to reopen, but still much work to be done

Acknowledgments: BahnCH and SwissRail Internet discussion groups and SBB/CFF press releases.