

Zeitschrift: Swiss express : the Swiss Railways Society journal
Herausgeber: Swiss Railways Society
Band: 6 (2000-2002)
Heft: 9

Artikel: Christmas comes but once a year
Autor: [s.n.]
DOI: <https://doi.org/10.5169/seals-854952>

Nutzungsbedingungen

Die ETH-Bibliothek ist die Anbieterin der digitalisierten Zeitschriften auf E-Periodica. Sie besitzt keine Urheberrechte an den Zeitschriften und ist nicht verantwortlich für deren Inhalte. Die Rechte liegen in der Regel bei den Herausgebern beziehungsweise den externen Rechteinhabern. Das Veröffentlichen von Bildern in Print- und Online-Publikationen sowie auf Social Media-Kanälen oder Webseiten ist nur mit vorheriger Genehmigung der Rechteinhaber erlaubt. [Mehr erfahren](#)

Conditions d'utilisation

L'ETH Library est le fournisseur des revues numérisées. Elle ne détient aucun droit d'auteur sur les revues et n'est pas responsable de leur contenu. En règle générale, les droits sont détenus par les éditeurs ou les détenteurs de droits externes. La reproduction d'images dans des publications imprimées ou en ligne ainsi que sur des canaux de médias sociaux ou des sites web n'est autorisée qu'avec l'accord préalable des détenteurs des droits. [En savoir plus](#)

Terms of use

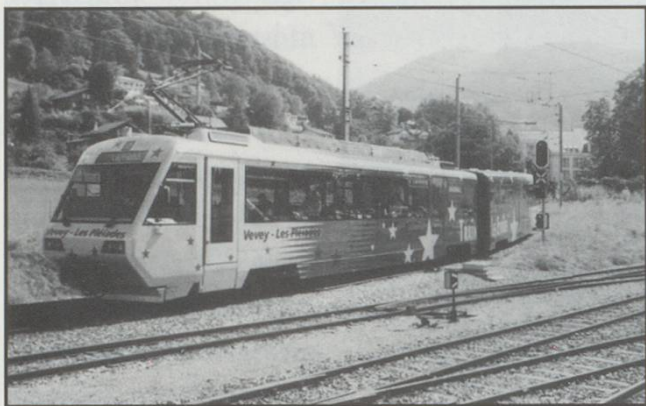
The ETH Library is the provider of the digitised journals. It does not own any copyrights to the journals and is not responsible for their content. The rights usually lie with the publishers or the external rights holders. Publishing images in print and online publications, as well as on social media channels or websites, is only permitted with the prior consent of the rights holders. [Find out more](#)

Download PDF: 05.08.2025

ETH-Bibliothek Zürich, E-Periodica, <https://www.e-periodica.ch>

CHRISTMAS COMES BUT ONCE A YEAR

I was very pleased to receive quite a large number of Christmas cards from many of you. Many thanks, they made the traditional display much more attractive than usual. Some of the pictures were very good indeed and it seemed a pity not to share some of them with you. I do realise that some of you will be surprised to see their Christmas cards in print but what the hell, it isn't Christmas after all. Actually I'm not sure I got that last bit right.



Picture and card by Michael Farr: "Le Train des Etoiles" at Blonay. 06/09/01

From Andy Nelson. "The Wrong Kind of Snow." A picture of Andy's well known diorama so often admired on our exhibition stand.

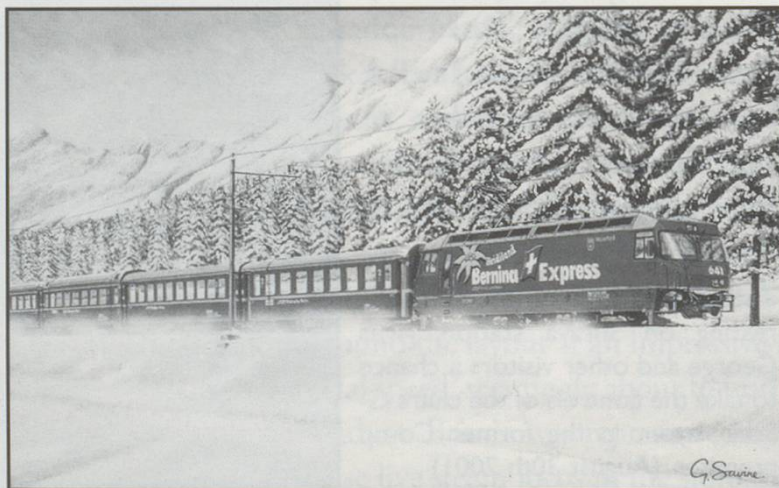


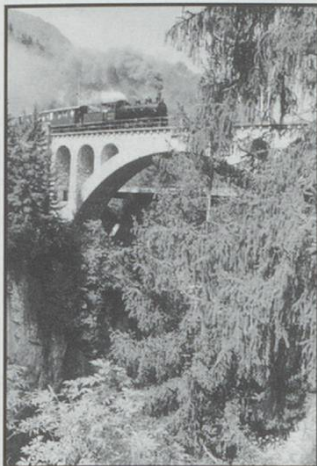
BELOW: Superpower at Schaffhausen. Re4/4^{II} 11135 pilots two sister locomotives on IR1763 Basel-Schaffhausen express. 26/08/2001. From and by Malcolm Hardy-Randall.



ÖBB 1044 501-3. Can you guess the location? Taken in 1989 and sent by Chris Pickles, the picture is a post-card and I am unable to give any more details as the back was damaged during removal. If anyone recognises it let me know and I'll acknowledge.

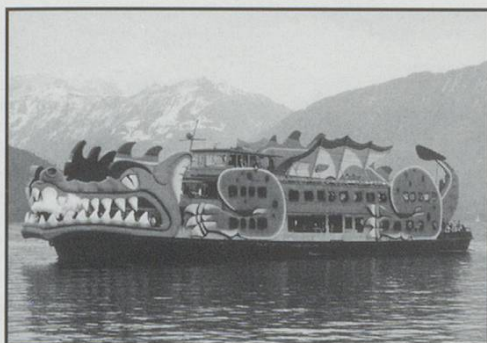
To be precise I didn't receive this one, rather it was the one I sent. Entitled "Winter Memories" it is produced by the well known painter of Swiss railways and other delights, Gerry Savine. He was recently commissioned to produce the artwork for the new HAG catalogue and you may be able to view this at the AGM in March.



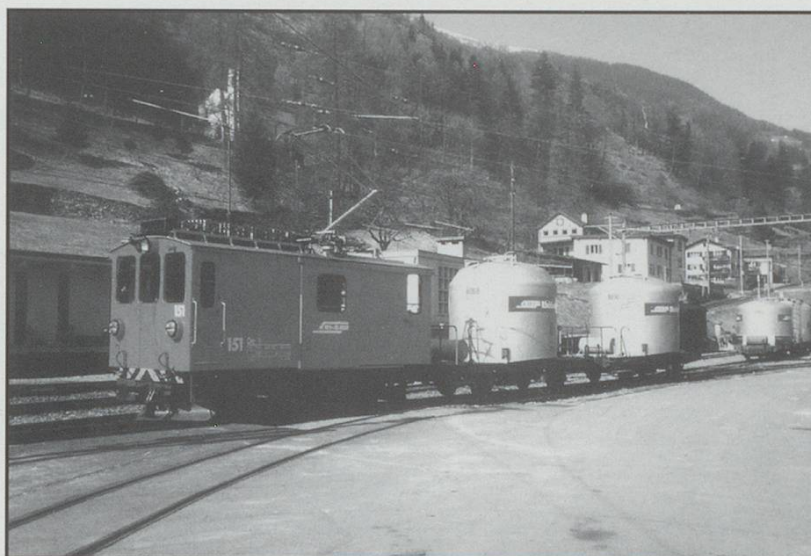


A brief reminder of the cover photo which graced Brian Rosen's family Christmas card for 2001.

The official SBB card which was sent to me by several people. This particular one was from Paul Russenberger and apparently his wife and family! I did wonder exactly what was the cartoon face meant to represent, looking as it does, rather "duck like". Does anyone have any ideas?



Sent to Andrew Russell by the Hotel des Alpes in Spiez where Andrew and his wife Velda have been regular visitors for some years.



A very nice picture taken at Campocologno in 1994 by Alan Pike and which fronted the card he and Audrey sent me in 2001. For the technically minded it shows RhB De2/2 151. These little shunters got about in 1994. 151 is also depicted on p86 of the Platform 5 Swiss Handbook at Ospizio Bernina in the same year!

Peter Rügger and his team at SGV sent this very nice card depicting DS Unterwalden at Stansstad. Of course this year is her 100th birthday. A very apt choice.



And finally I know it's not Swiss but Brian Hemming sent it. *The Countess* and No. 14 storm up Golfa Bank on the Welshpool and Llanfair. Painted by Howard Birchmore and available from the W&L. It's a great picture and it does have snow!

