

Zeitschrift: Swiss express : the Swiss Railways Society journal
Herausgeber: Swiss Railways Society
Band: 6 (2000-2002)
Heft: 5

Artikel: A new package
Autor: Hoekstra, George M.
DOI: <https://doi.org/10.5169/seals-854905>

Nutzungsbedingungen

Die ETH-Bibliothek ist die Anbieterin der digitalisierten Zeitschriften auf E-Periodica. Sie besitzt keine Urheberrechte an den Zeitschriften und ist nicht verantwortlich für deren Inhalte. Die Rechte liegen in der Regel bei den Herausgebern beziehungsweise den externen Rechteinhabern. Das Veröffentlichen von Bildern in Print- und Online-Publikationen sowie auf Social Media-Kanälen oder Webseiten ist nur mit vorheriger Genehmigung der Rechteinhaber erlaubt. [Mehr erfahren](#)

Conditions d'utilisation

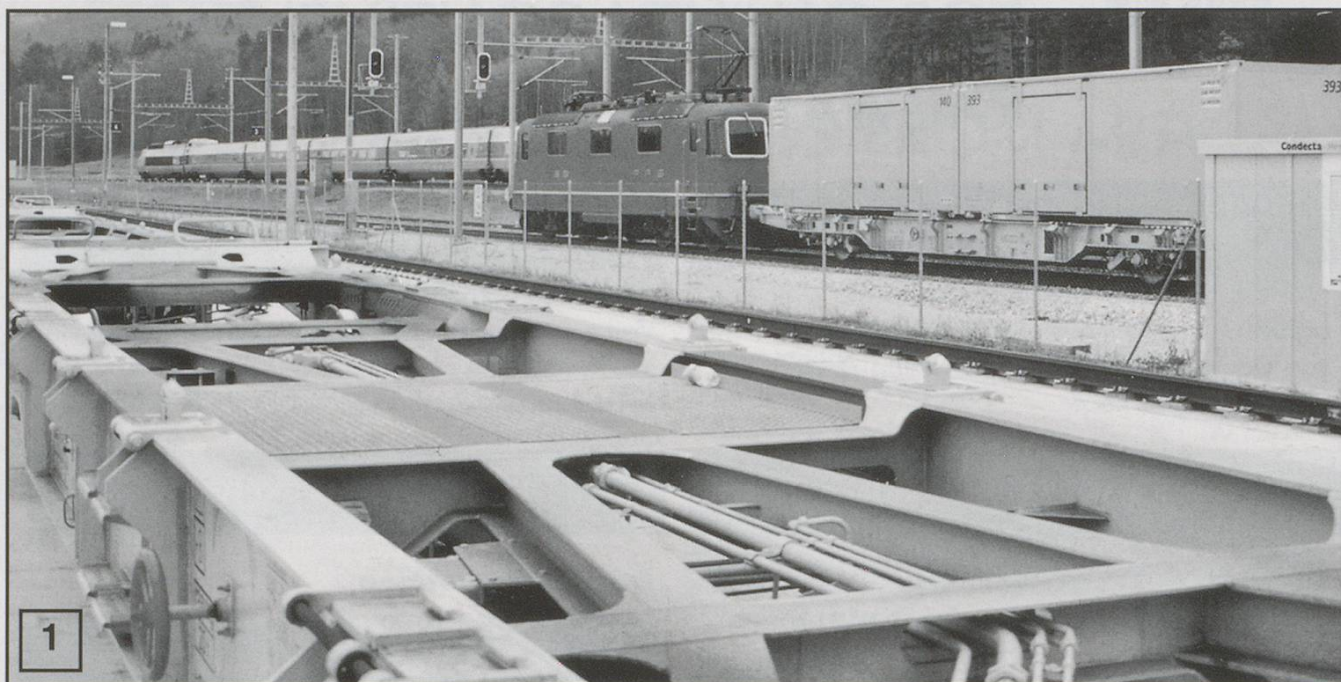
L'ETH Library est le fournisseur des revues numérisées. Elle ne détient aucun droit d'auteur sur les revues et n'est pas responsable de leur contenu. En règle générale, les droits sont détenus par les éditeurs ou les détenteurs de droits externes. La reproduction d'images dans des publications imprimées ou en ligne ainsi que sur des canaux de médias sociaux ou des sites web n'est autorisée qu'avec l'accord préalable des détenteurs des droits. [En savoir plus](#)

Terms of use

The ETH Library is the provider of the digitised journals. It does not own any copyrights to the journals and is not responsible for their content. The rights usually lie with the publishers or the external rights holders. Publishing images in print and online publications, as well as on social media channels or websites, is only permitted with the prior consent of the rights holders. [Find out more](#)

Download PDF: 09.12.2025

ETH-Bibliothek Zürich, E-Periodica, <https://www.e-periodica.ch>



The TGV racing in the background on its way from Lausanne to Paris, is just about to negotiate the turnoff for Vallorbe. The Re 4/4^{II} with its postal train is not quite as fast, but the special two-axle swap-body carrier wagons are capable of running at 75 mph.

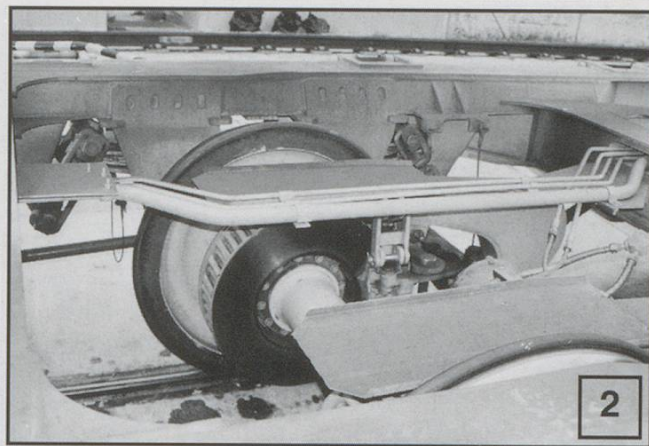
The Swiss love to send parcels: the total population of just over seven million, sends off an incredible total of 600,000 parcels a day which in turn equates to 25 parcels for every man, woman and child per year! Some of the traffic is mail order. Then there are the parcels of goodies sent by families to the men doing their military service (which is compulsory and lasts on average 2-3 weeks every other year, for males between the ages of 20-45), the countless components and spare parts for Switzerland's multitude of very small industries and naturally many private ones. I myself send off one almost every week.

To handle all of this, the Swiss postal service "La Poste / Die Post / La Posta" relies very heavily on rail transport. The beginning and the end of the chain, though, are the familiar yellow vans. Every parcel is bar coded. Once "tagged", they go through the distribution centres, where they can be both directed towards their destination, as well as being traced en route. They are loaded onto rolling cages which are then transported in special swap-bodies.

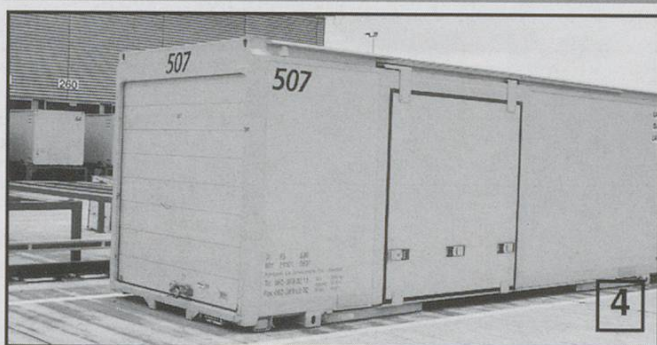
These travel on special wagons in merry-go-round trains which link most major population areas. Three purpose built and almost fully automated sorting centres: Daillens in the west, Härkingen in the centre and Frauenfeld in the east, do most of the distribution to the smaller local centres. The bar code directs the parcel onto the different stages: onto another rolling cage, into another swap-body and so on, till it arrives at the final destination, the point at which the postman puts it in his van. In an average day, the purpose built swap body carrier wagons on the trains transport over 3,000 tonnes over a total distance of 100,000 km! Without the trains, all of this would have to go on the road, just imagine. . . .

Your correspondent was invited to visit the automated sorting centre at Daillens, near Lausanne and thus made possible the following Photo-Story. A great big "merci beaucoup" to the people of "La Poste-Transports", of the "Centre de distribution de Daillens" and the CFF press office in Lausanne!

The 57 ft. long "Lgnss" wagons are fitted with disc brakes, anti-rolling cylinders and oleo buffers. They are registered with AEE Cargo in Zug, a specialist wagon rental company. See drawing No. 1.

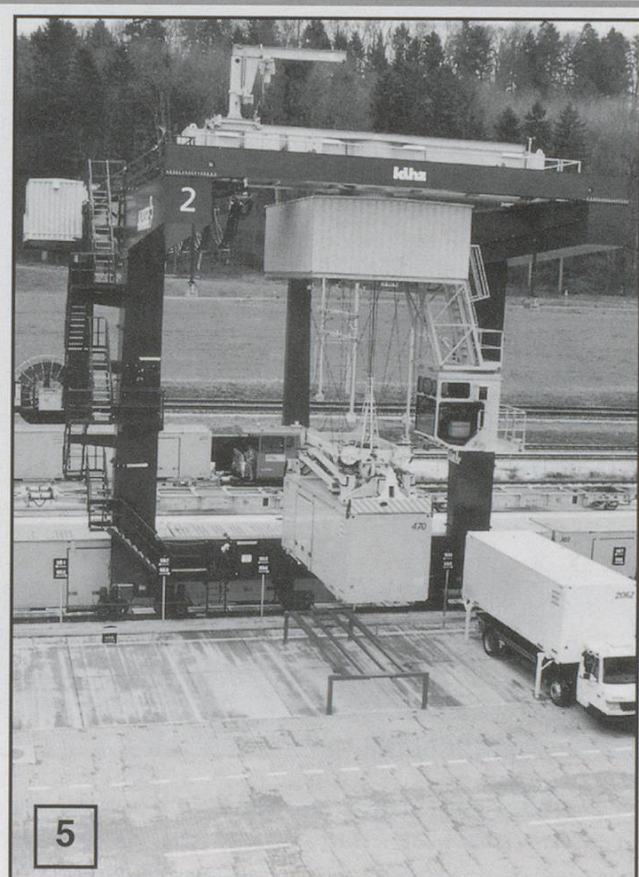


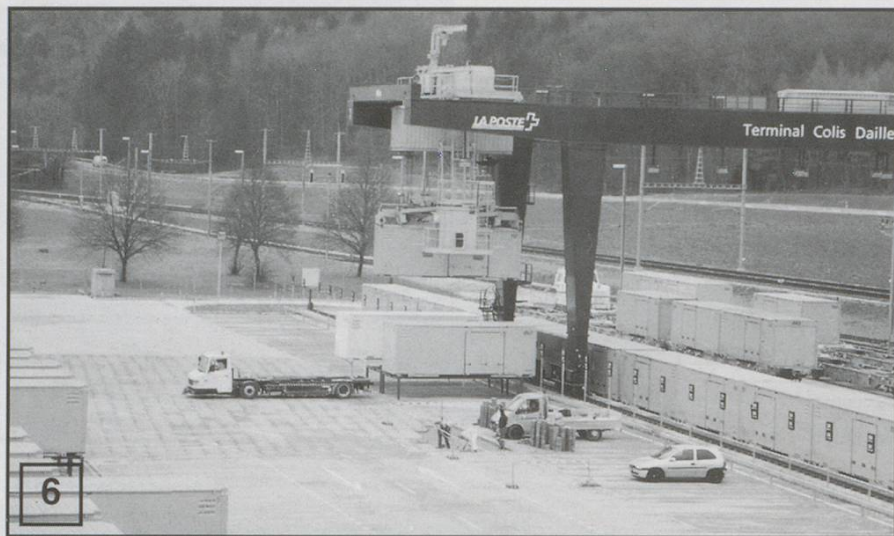
Once in the sidings of the centre, the train is taken over by the resident tractor. It is owned by the manufacturer Stadler, leased to the PTT and numbered in the SBB series, as Tm 237-916-2. The driver is employed by the Post, but trained by the SBB.



The special swap-bodies (as they cannot be stacked, they are not classified as containers) are built by Frech Hoch in Sissach. They are 24ft. 5in. long, 8 ft. 4 in. wide and 8 ft. 9 in. high. They are in the process of being fitted with a transponder, which will enable GPS tracing of the yellow swap-body. See drawing No. 2.

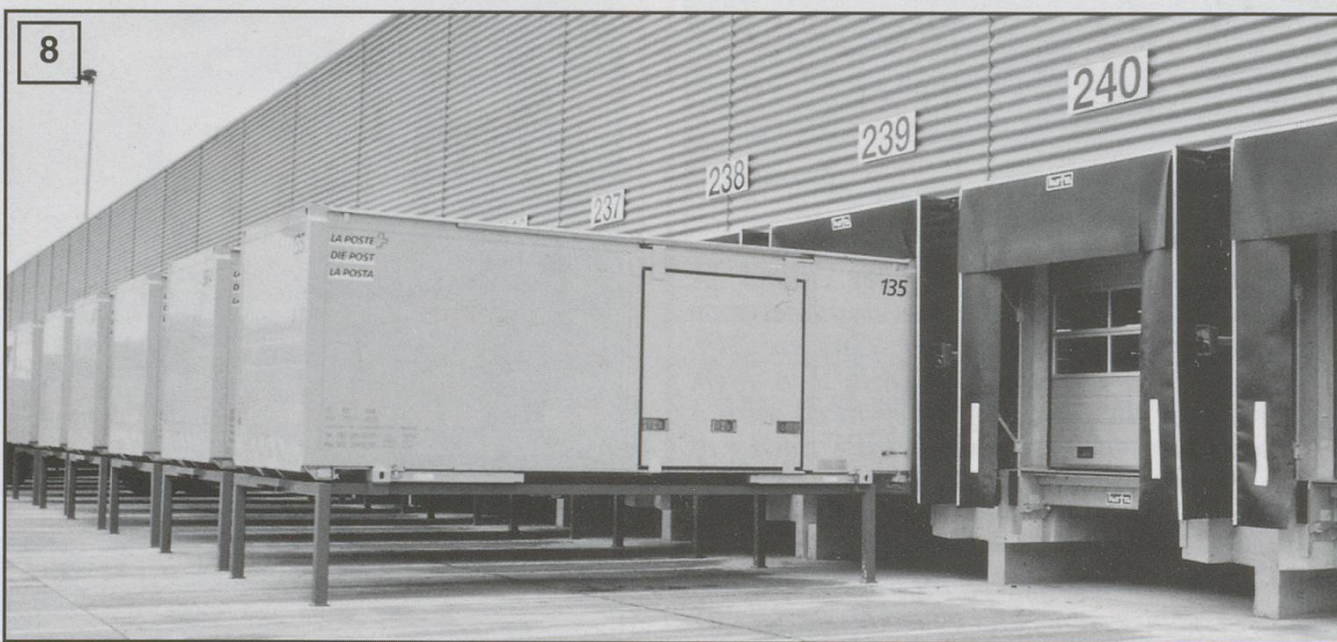
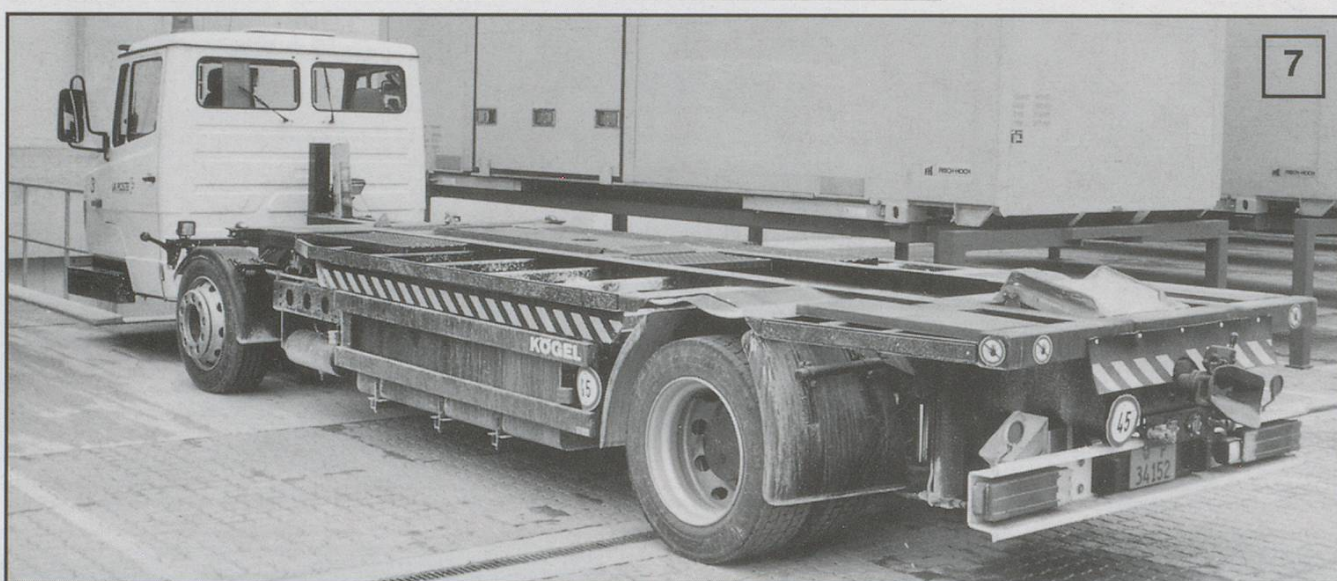
The swap-bodies are lifted off the wagons by one of the two 16 t. gantry cranes and placed on special carrier-beds. The swap-bodies are fitted with emergency legs, but these are not designed for heavy everyday use.



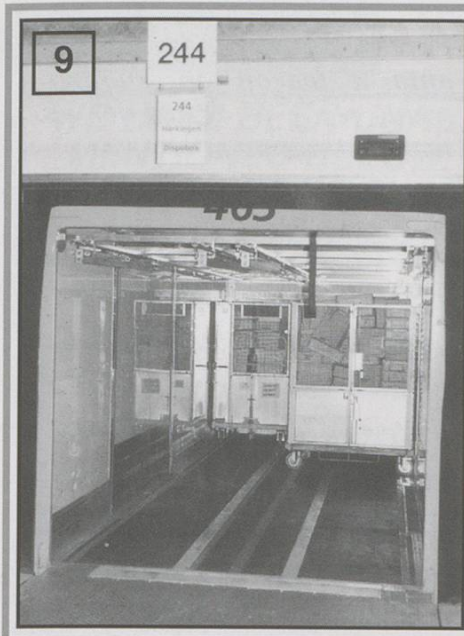


It is just a short distance to the loading bays at the terminal. A purpose built truck drives under the carrier-bed, connects with the swap-body and the carrier, lifts it off the ground and drives to the correct bay. Here the combination of swap-body and carrier-bed is put back on the ground.

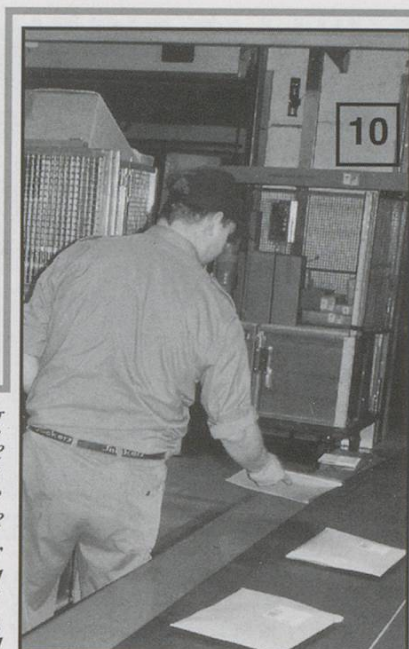
The trucks have a standard underframe with a special cab and loading bed designed and built by Kögel.



Everything is numbered: the swap-bodies, the rolling cages, the loading bays and every parcel. The central computer knows where and when the parcel has passed through.



The swap-body in loading bay 244 is destined for the distribution centre in Härkingen. Inside, the parcels are loaded in rolling cages. In a 24-hour period, the centre handles about 25 trains, with 500 swap-bodies, holding 4,000 rolling cages.



One of the few humans working in the centre. First he has to take out parcels which are oversized, wrongly packaged (i.e. with loose strings that can get caught), or have no bar code. These will have to be handled separately. The others have to be placed with the bar code the right way up on the conveyor belt.



After the bar code has been read by one of these gates, the parcel will be conveyed with full automation. The centre can handle a maximum of 15,000 parcels an hour. These almost flat packets are parcels: the centre does not handle letters.



In the huge 1,000. ft. long hall, the parcels travel on continuous conveyors with tipping platforms, which lead into one of the 337 destination bins.

Ready for their next stage are these "Dispo Boxes", strong plastic boxes for multiple use, that can be borrowed from the Post and have to be returned to them. They are used a lot by customers that have a lot of similar sized items to send. Note how the rolling cages are held in place by special poles secured to ceiling and floor.



No. 1 : An Lgnss wagon of "Die Post - Paketpost"
(dimensions in mm.).

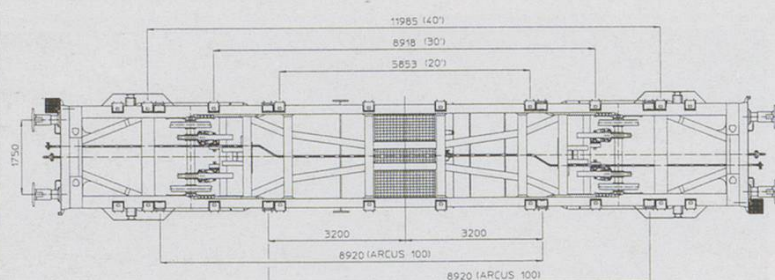
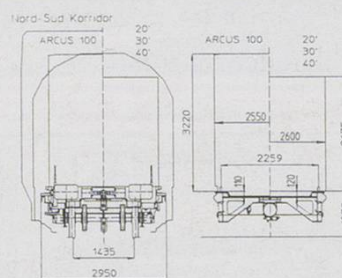
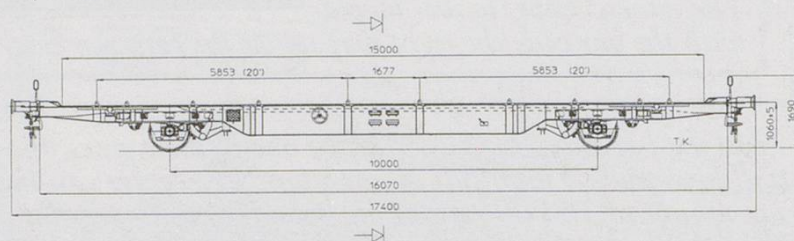



Figure 1: A schematic diagram of a multi-story building structure showing various levels and dimensions. The building is composed of several rectangular sections stacked vertically. From top to bottom, the sections are: a top section with a width of 20' - 7.45m and a height of 15.5'; a section with a width of 20' - 7.45m and a height of 15.5'; a section with a width of 20' - 7.45m (7.82m) and a height of 31'; a section with a width of 30' - 11.983m and a height of 31'; a section with a width of 40' - 15.0m and a height of 31'; a section with a width of 40' - 15.0m and a height of 31'; and a bottom section labeled 'Arcus 100' with a width of L = 13.79m and a height of 29'. Dimensions are indicated by arrows and text labels. The total height of the building is 198.5m. The total width of the building is 32.00m. The building is supported by a foundation with a width of 32.00m and a height of 8.00m.

	A	B	C	D
S	18	22	27	31
SS	18	22	27	31

Tragwagen Lgnss - Diec		Guertel	29.04.98	sd
		Gesamt	30.04.98	Gy
DIE POST  Die Schweizerische Post Paketpost Einlieferungs- (Die versenden)		Umsatz:		
			PP2000	F2-980452

Technical drawing of the H 1000 mobile office cabinet, showing dimensions and load capacity.

Dimensions:

- Overall width: 3650 mm
- Overall depth: 7450 mm
- Overall height: 2550 mm
- Internal width: 2100 mm
- Internal depth: 1700 mm
- Internal height: 2340 mm
- Top thickness: 105 mm
- Bottom thickness: 20 mm
- Side thickness: 2160 mm
- Max. height: 3955 mm

Load Capacity:

- 2800 kg
- 13200 kg
- 16000 kg

Internal Dimensions:

- 2700 mm
- 2460 mm
- 1900 mm

Other Labels:

- Unterseite
- Unterseite
- Unterseite

No. 2 : Swap-body
of "Die Post -
Pakpost" (dimen-
sions in mm.).

Modell International gesetzlich geschützt.
Design protected by International law.
©Copyright 1993/1994 Konstruktion, S.A. CH