

**Zeitschrift:** Swiss express : the Swiss Railways Society journal  
**Herausgeber:** Swiss Railways Society  
**Band:** 5 (1997-1999)  
**Heft:** 3

**Artikel:** Modelling Swiss railways  
**Autor:** Marriott, Peter  
**DOI:** <https://doi.org/10.5169/seals-854494>

### **Nutzungsbedingungen**

Die ETH-Bibliothek ist die Anbieterin der digitalisierten Zeitschriften auf E-Periodica. Sie besitzt keine Urheberrechte an den Zeitschriften und ist nicht verantwortlich für deren Inhalte. Die Rechte liegen in der Regel bei den Herausgebern beziehungsweise den externen Rechteinhabern. Das Veröffentlichen von Bildern in Print- und Online-Publikationen sowie auf Social Media-Kanälen oder Webseiten ist nur mit vorheriger Genehmigung der Rechteinhaber erlaubt. [Mehr erfahren](#)

### **Conditions d'utilisation**

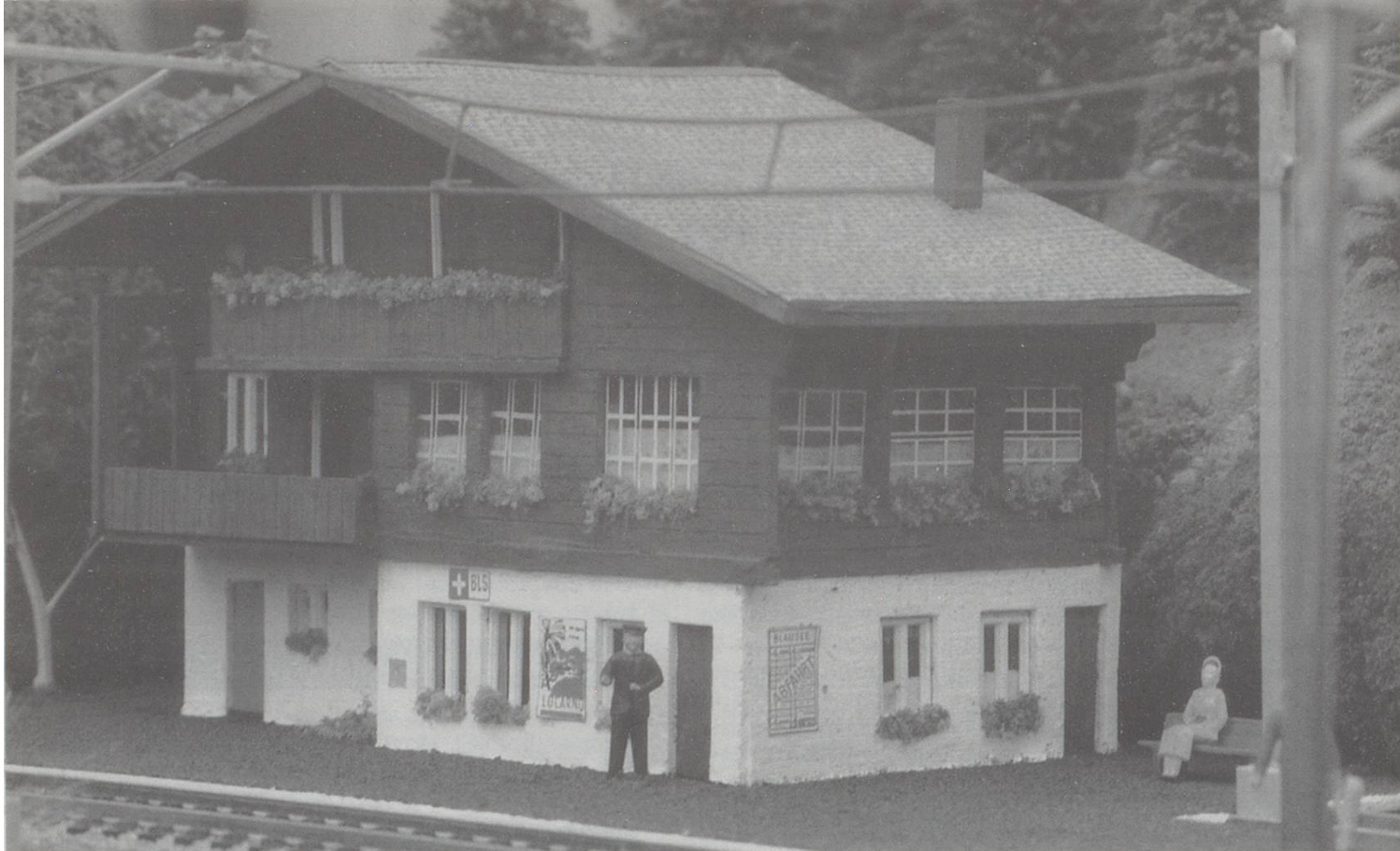
L'ETH Library est le fournisseur des revues numérisées. Elle ne détient aucun droit d'auteur sur les revues et n'est pas responsable de leur contenu. En règle générale, les droits sont détenus par les éditeurs ou les détenteurs de droits externes. La reproduction d'images dans des publications imprimées ou en ligne ainsi que sur des canaux de médias sociaux ou des sites web n'est autorisée qu'avec l'accord préalable des détenteurs des droits. [En savoir plus](#)

### **Terms of use**

The ETH Library is the provider of the digitised journals. It does not own any copyrights to the journals and is not responsible for their content. The rights usually lie with the publishers or the external rights holders. Publishing images in print and online publications, as well as on social media channels or websites, is only permitted with the prior consent of the rights holders. [Find out more](#)

**Download PDF:** 31.07.2025

**ETH-Bibliothek Zürich, E-Periodica, <https://www.e-periodica.ch>**



## Modelling Swiss Railways by Peter Marriott

### Making yet more Swiss station buildings!

In the June 1996 issue of *Swiss Express* the idea of constructing just a station building to remind ourselves of the last Swiss holiday was discussed. Whilst we may wish to reproduce the entire network of the RhB or MOB in our homes realistic aspirations sometimes need to temper our modelling ambitions!

Since writing the last article for *Swiss Express* several months ago I've tried to put my words into action and have subsequently built two new HO model station buildings. In this issue we will cover a freelance station based on a FidesPress kit and in a future *Swiss Express* a kit built model of a popular Brunig line station, Oberreid, will be covered.

Whilst the majority of kits available are plastic based I find it a welcome change to build one of the Fides range of wooden kits which are available from the *Swiss Express* advertiser Great Little Trains of Kenilworth. The range includes models for Z, O, HO and N gauges. The FidesPress kits are entirely pre cut but the Fides range parts need to be cut by the builder. The prices (late 1996) are reasonable; £10.25 for an N gauge kit of Blausee Mitzholz station or £11.00 for the HO model used as the basis of this project. The kits include detail castings, signs, glazing etc with diagrammatic instructions (which

it is worth studying in some detail before commencing construction).

FidesPress and Fides kits are made in Montreux. For HO gauge, station buildings are available representing Surava, Celerina and Saanenmoser. The ranges include the FO locomotive shed at Disentis, various industrial buildings and the post office and a typical chalet from the Saanenmoser area.

The basis for this model is FidesPress kit 1140 which is based on the post office at Saanenmoser. To "convert" it to resemble a station building station signs, timetables, posters etc which were left over from other plastic kits were added. The wood parts required painting before assembly - in this case water colours and acrylics but stain can also be used. Don't worry if the parts bend a little after painting - they usually return to their original shape! Once the glue has set (I use woodworking PVA adhesive) the model is quite strong and any flaws in the finish can be touched up with paints or hidden with miniature creepers! The hanging geraniums so common in Switzerland are a dab of white PVA glue at the bottom of the windows and on the balconies with a mixture of added flowers (i.e. finely chopped up foam) in different colours. The shutters and final details were still to be added at the time the photograph of the model was taken.