

Zeitschrift: Swiss express : the Swiss Railways Society journal
Herausgeber: Swiss Railways Society
Band: 4 (1994-1996)
Heft: 6

Artikel: The new BLS "MS Berner Oberland"
Autor: Falkson, Leslie
DOI: <https://doi.org/10.5169/seals-855040>

Nutzungsbedingungen

Die ETH-Bibliothek ist die Anbieterin der digitalisierten Zeitschriften auf E-Periodica. Sie besitzt keine Urheberrechte an den Zeitschriften und ist nicht verantwortlich für deren Inhalte. Die Rechte liegen in der Regel bei den Herausgebern beziehungsweise den externen Rechteinhabern. Das Veröffentlichen von Bildern in Print- und Online-Publikationen sowie auf Social Media-Kanälen oder Webseiten ist nur mit vorheriger Genehmigung der Rechteinhaber erlaubt. [Mehr erfahren](#)

Conditions d'utilisation

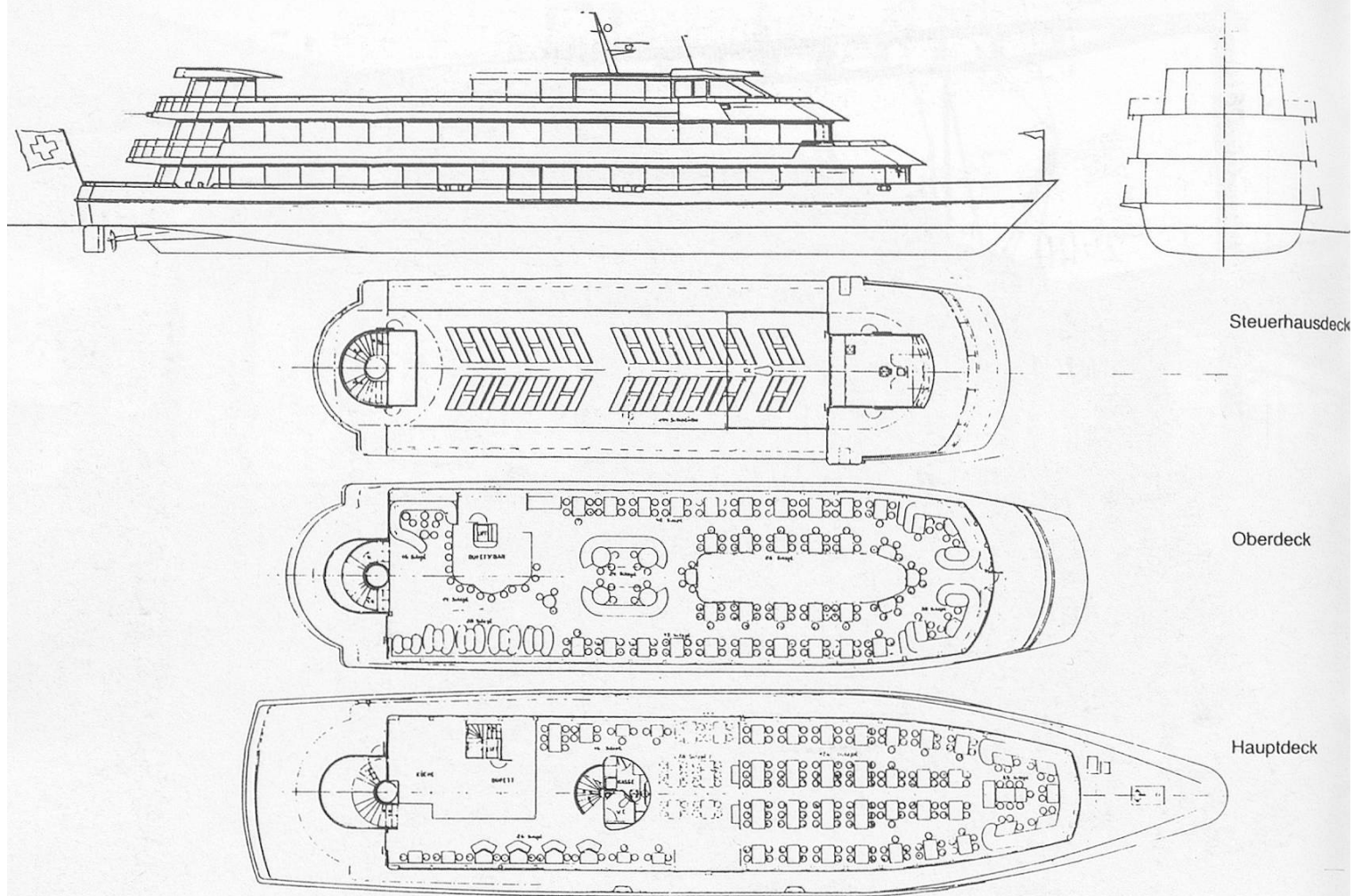
L'ETH Library est le fournisseur des revues numérisées. Elle ne détient aucun droit d'auteur sur les revues et n'est pas responsable de leur contenu. En règle générale, les droits sont détenus par les éditeurs ou les détenteurs de droits externes. La reproduction d'images dans des publications imprimées ou en ligne ainsi que sur des canaux de médias sociaux ou des sites web n'est autorisée qu'avec l'accord préalable des détenteurs des droits. [En savoir plus](#)

Terms of use

The ETH Library is the provider of the digitised journals. It does not own any copyrights to the journals and is not responsible for their content. The rights usually lie with the publishers or the external rights holders. Publishing images in print and online publications, as well as on social media channels or websites, is only permitted with the prior consent of the rights holders. [Find out more](#)

Download PDF: 15.04.2026

ETH-Bibliothek Zürich, E-Periodica, <https://www.e-periodica.ch>



The new BLS "MS Berner Oberland"

by Leslie Falkson

Some details of this new vessel were given in the "Stop Press" to the last magazine. By courtesy of the Chief Executive of the BLS Navigation Services, Peter Ochsenbein, more information together with diagrams can now be given.

The ship will be named "MS BERNER OBERLAND" and is being built by Meidericher Schiffswerft of Duisburg, Germany. It will be transported in sections by road to Thun where it will be erected. Although the delivery date is not yet certain, the BLS hopes to make the first passenger trip in 1995. Latest reports suggest that it will not enter regular passenger service until spring 1996.

It has been designed to fulfil the roles of regular service vessel and private charter. In the latter role, it can provide comfortable facilities for conferences or banqueting for up to 500 people. With its full capacity of 1000, with a great deal of deck space, it will be ideal for year round services particularly in the winter months.

Only 4 crew members are required. The captain has all power and navigation controls, including the latest manoeuvring devices on the bridge and to assist him in the long passage in reverse from Interlaken West down the canal to Lake Thun and from Schadau to Thun Hbf., television cameras are fitted connected to bridge monitors. Costing nearly SFrs. 10million.

The ship measures:-

Overall length 57 metres (187 feet)

Overall width 12 metres (39.4 feet)

Waterline to bridge 11 metres (36 feet)

Draft, fully laden 1.6 meters (5.3 feet)

Propulsion is by two 350kw motors giving a service speed of 27kph (14.6 knots)

OPPOSITE PAGE

Two awards were received by the Society from the "Mini Model Club Bucuresti" in Rumania, one has been reproduced here the other is similar.

unicef Comitetul National Roman
MINI MODEL CLUB BUCURESTI • ROMANIA

Diploma Omagiata
MINI MODEL CLUB BUCURESTI • ROMANIA

Acorda : PUBLICATIEI SWISS EXPRESS -
THE JOURNAL OF THE SWISS RAILWAYS SOCIETY

Essex - ENGLAND

Premiul special

125 ANI ADMINISTRATIE FERROVIARA ROMANA
ZIUA CEFERISTILOR
prezenta la expozitia internationala
78100
BUCURESTI
31.10.'94

LINIA DE CALE FERATA
BUCURESTI FILARET - GIURGIU

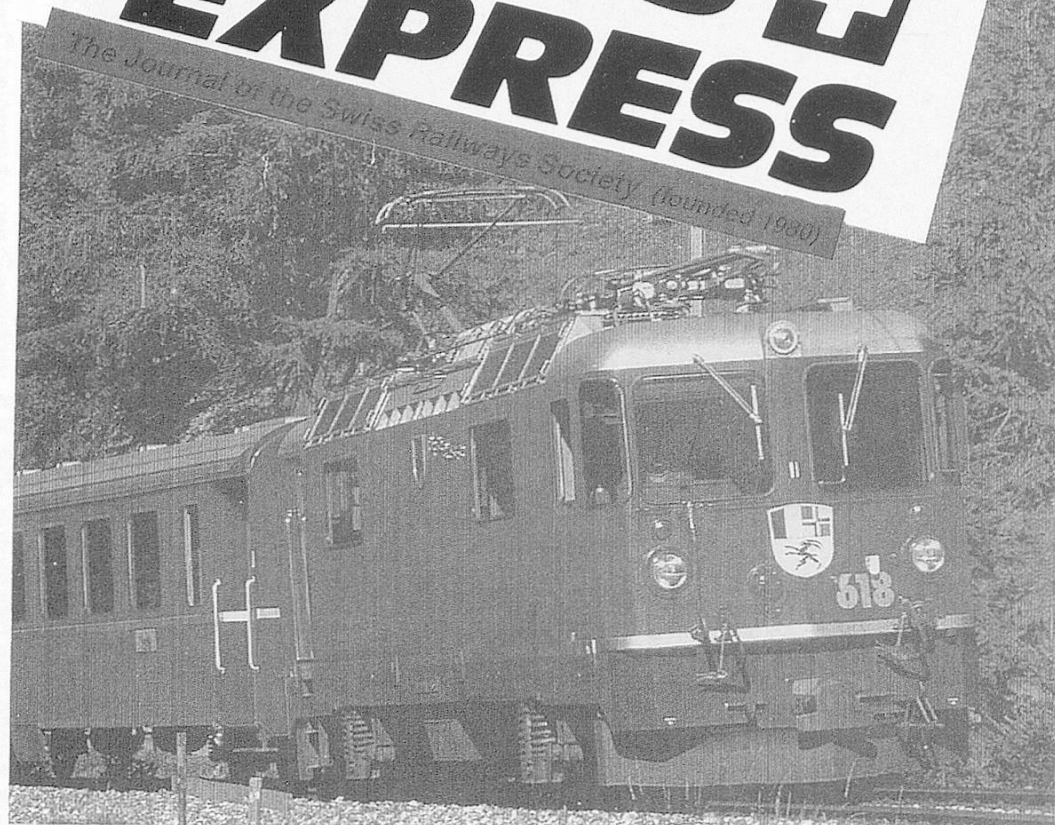
125

ANI DE LA INAUGURARE SI ADMINISTRARE
FERROVIARA ROMANEASCA
1869 31 octombrie 1994

XEROX

The Document Company

**SWISS EXPRESS**



Presedinte

Nicolae Stoicescu

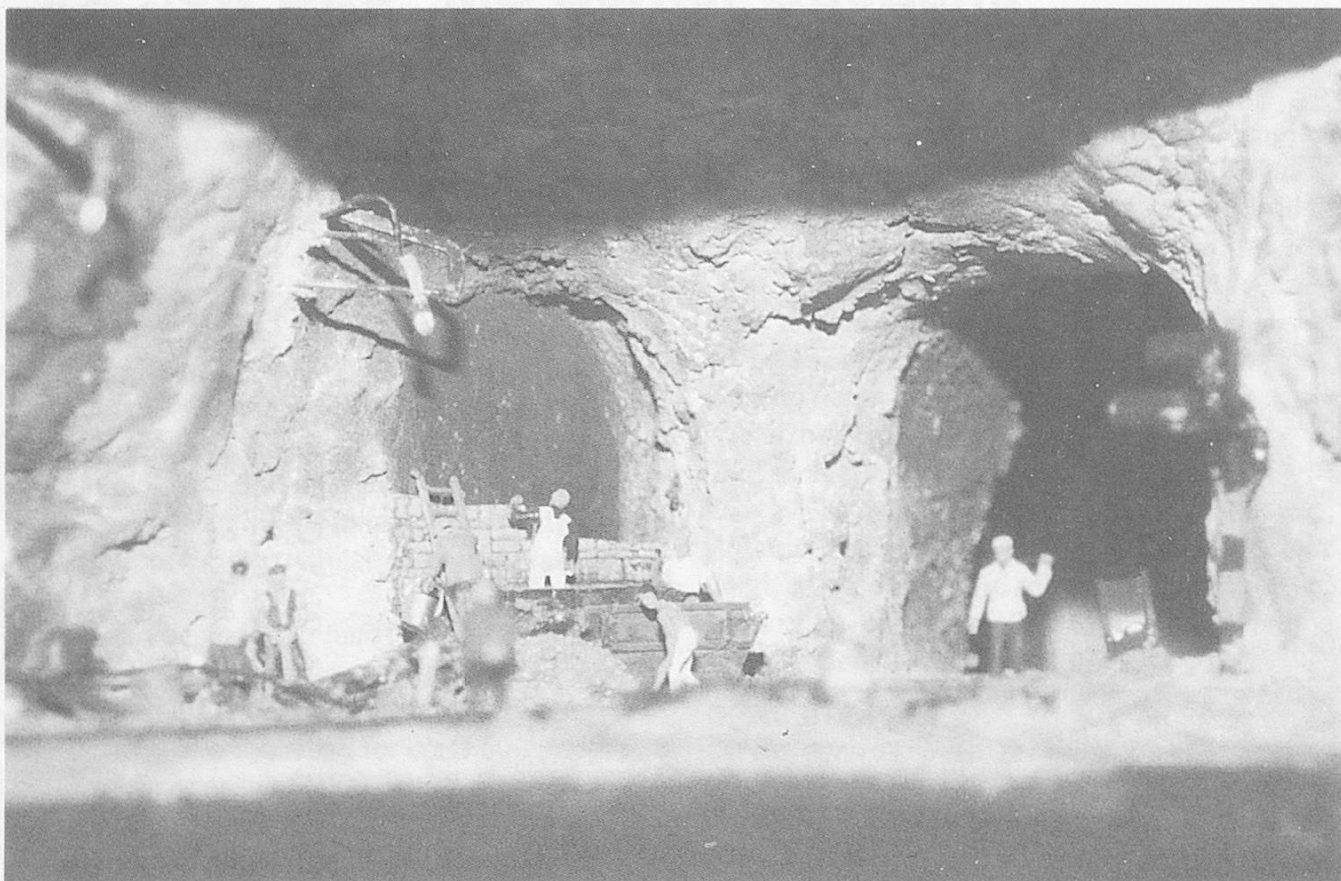
Consilier expozitie

Cyrt
Carmen Stoicescu





Above: Letchworth MRC brought along there splendid RhB based layout, there are lots of small scenes, figures climbing , hikers and Swiss cows,
Below: On one side of the layout a cut out into a tunnel shows maintenance crews working.



Swiss Express Magazine



Above: The SRS sales stand with the organiser of the AGM, Tom Sheard, head down counting the take?

Below: "Dransdorf" belongs to our Secretary, it is fully automatic and allows time talk?

