

**Zeitschrift:** Swiss express : the Swiss Railways Society journal  
**Herausgeber:** Swiss Railways Society  
**Band:** 4 (1994-1996)  
**Heft:** 3

**Rubrik:** Fred Ward remembers

### **Nutzungsbedingungen**

Die ETH-Bibliothek ist die Anbieterin der digitalisierten Zeitschriften auf E-Periodica. Sie besitzt keine Urheberrechte an den Zeitschriften und ist nicht verantwortlich für deren Inhalte. Die Rechte liegen in der Regel bei den Herausgebern beziehungsweise den externen Rechteinhabern. Das Veröffentlichen von Bildern in Print- und Online-Publikationen sowie auf Social Media-Kanälen oder Webseiten ist nur mit vorheriger Genehmigung der Rechteinhaber erlaubt. [Mehr erfahren](#)

### **Conditions d'utilisation**

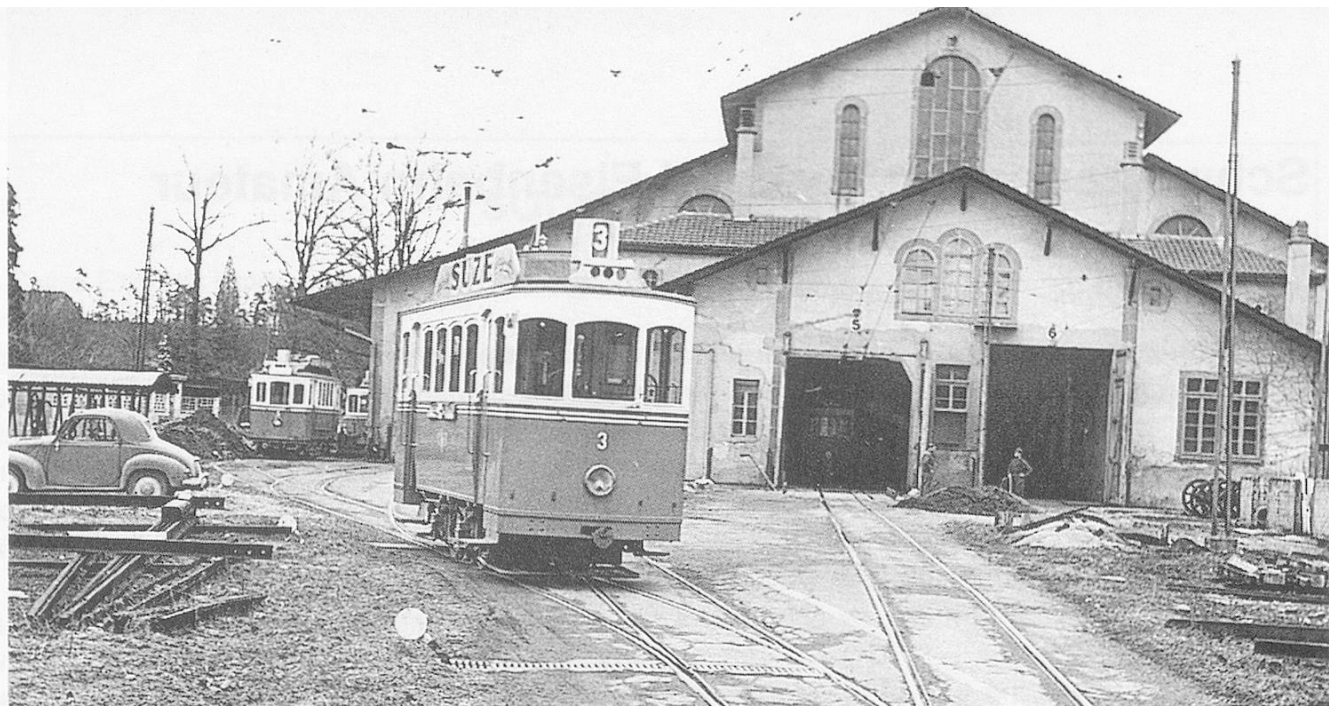
L'ETH Library est le fournisseur des revues numérisées. Elle ne détient aucun droit d'auteur sur les revues et n'est pas responsable de leur contenu. En règle générale, les droits sont détenus par les éditeurs ou les détenteurs de droits externes. La reproduction d'images dans des publications imprimées ou en ligne ainsi que sur des canaux de médias sociaux ou des sites web n'est autorisée qu'avec l'accord préalable des détenteurs des droits. [En savoir plus](#)

### **Terms of use**

The ETH Library is the provider of the digitised journals. It does not own any copyrights to the journals and is not responsible for their content. The rights usually lie with the publishers or the external rights holders. Publishing images in print and online publications, as well as on social media channels or websites, is only permitted with the prior consent of the rights holders. [Find out more](#)

**Download PDF:** 01.08.2025

**ETH-Bibliothek Zürich, E-Periodica, <https://www.e-periodica.ch>**



## Fred Ward Remembers

It is 18 March 1963, the location is the Fribourg Tramways depot and works. What price the legendary tidiness of Switzerland?

The mixed bittiness of the buildings are of interest, also note the unusual use of point levers on a tramway. Tram No.3 on Route 3 (destination Peyrolles) is standing by for service, but the tramways have only two years life left.

## Reviews

### Railway Roundabout in Europe

**W.H.Smith (Ian Allen SBS Video) Exclusive £10.99**

This captivating video, part one of a series of two, is a compilation of film clips taken by P.B.Whitehouse and John Adams for the BBC TV programme *Railway Roundabout* during 1958-62. It is about 55 minutes in length, a good half of which concentrates on the metre gauge railways in France during the late '50s and early '60s including SLM Mallets on the Vivirais. Only ten minutes is devoted to Swiss railways, but during that time we see steam on the FO as HG3/4 No.4 works clearing the snow on the old Furka summit route. In addition we look at mixed freight operation on the Brünig line and the Brienz-Rothorn Bahn without a diesel in sight.

The remainder of the video looks at steam tramways in Rotterdam, German pacifics around Hamburg and finished in Finland with a look at steam from Helsinki to the Arctic circle.

Although not a Swiss Railway video, its purchase is highly recommended as a historical record of the way things were in Europe thirty years ago: SH

### The Emmental Railways *Part 1*

**MITV £19.95**

The EBT group is one that tends to be overlooked when Swiss railways are discussed. It serves an area most tourists ignore, and because its passenger services are almost entirely Triebwagen based, appears to have little appeal to the rail enthusiast.

Yet not only has it a fine collection of vintage and modern locomotives for its extensive freight workings, the complex nature of the interlocking services is fascinating to anyone with an interest in timetable compilation. In the first of two MITV videos, the locomotives are well featured whilst the run from Moutier through Solothurn to Thun is covered. We also get a glimpse of the major towns served and a reminder that the Emmental provides us with an excellent cheese.

The high quality of the recording is matched by the excellence of the editing. If you haven't yet sampled the EBT, this video will encourage you to remedy the defect. If you have, you've probably got it already. Like the cheese, the EBT grows on one.

CJF