

Zeitschrift: Swiss express : the Swiss Railways Society journal
Herausgeber: Swiss Railways Society
Band: 4 (1994-1996)
Heft: 2

Artikel: Stations surveyed : St Légier (CEV)
Autor: Freezer, Cyril
DOI: <https://doi.org/10.5169/seals-855004>

Nutzungsbedingungen

Die ETH-Bibliothek ist die Anbieterin der digitalisierten Zeitschriften auf E-Periodica. Sie besitzt keine Urheberrechte an den Zeitschriften und ist nicht verantwortlich für deren Inhalte. Die Rechte liegen in der Regel bei den Herausgebern beziehungsweise den externen Rechteinhabern. Das Veröffentlichen von Bildern in Print- und Online-Publikationen sowie auf Social Media-Kanälen oder Webseiten ist nur mit vorheriger Genehmigung der Rechteinhaber erlaubt. [Mehr erfahren](#)

Conditions d'utilisation

L'ETH Library est le fournisseur des revues numérisées. Elle ne détient aucun droit d'auteur sur les revues et n'est pas responsable de leur contenu. En règle générale, les droits sont détenus par les éditeurs ou les détenteurs de droits externes. La reproduction d'images dans des publications imprimées ou en ligne ainsi que sur des canaux de médias sociaux ou des sites web n'est autorisée qu'avec l'accord préalable des détenteurs des droits. [En savoir plus](#)

Terms of use

The ETH Library is the provider of the digitised journals. It does not own any copyrights to the journals and is not responsible for their content. The rights usually lie with the publishers or the external rights holders. Publishing images in print and online publications, as well as on social media channels or websites, is only permitted with the prior consent of the rights holders. [Find out more](#)

Download PDF: 02.08.2025

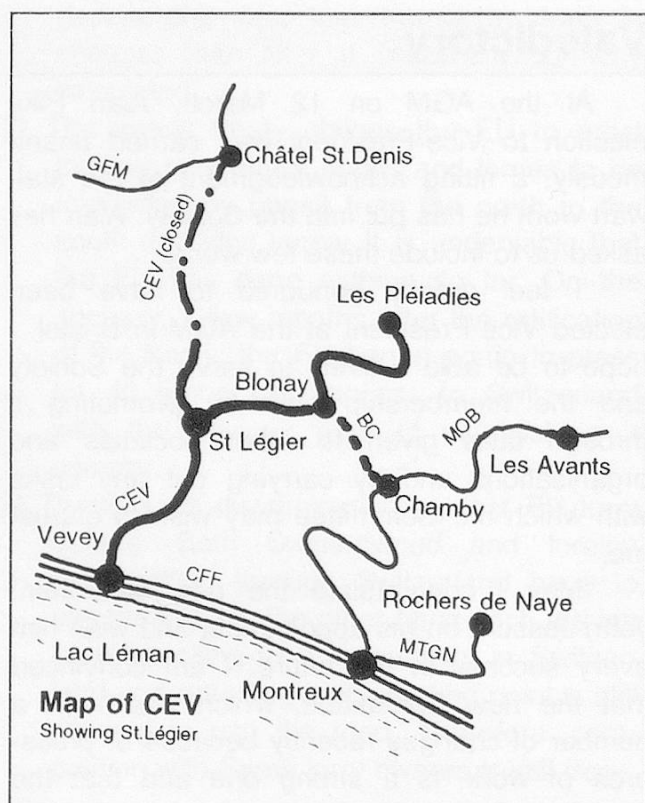
ETH-Bibliothek Zürich, E-Periodica, <https://www.e-periodica.ch>



Stations surveyed

St Légier (CEV)

by Cyril Freezer



The surviving station building at St.Légier' little more than a wooden shelter with an Integra panel box attached.

Photographs by the author

Older members will remember that in the heyday of OO9 narrow gauge modelling, a popular station layout consisted of a loop on a curve with a single siding running into the corner of the baseboard. There is a prototype for everything and most examples of this are to be found in Switzerland, so I was not unduly surprised when I discovered this exact formation on the Chemin de fer Electricques Veveysans (CEV) at St.Légier.

There is a good reason for this, for as the sketch map shows there was once a metre gauge link between the CEV at St.Légier and the Chemins de fer Fribourgoise (GFM) at Châtel St.Denis. The line has been closed and the connection is now made by bus direct to Vevey.

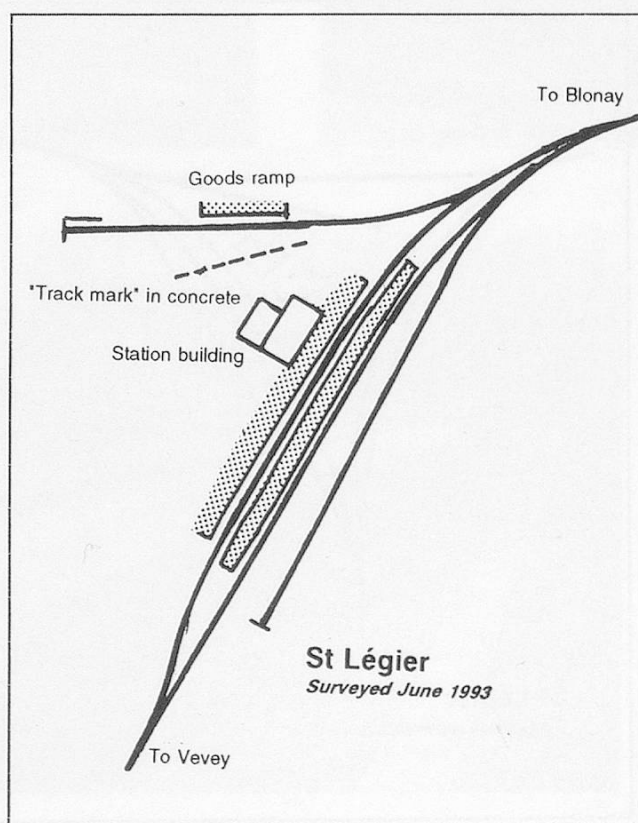
This was apposite to our visit to St.Légier last June, as we were on a gentle amble from Bern that had taken us to Fribourg, where we enjoyed a little over an hour's sightseeing



before catching the GFM bus to Bulle. Here we had an excellent open sandwich lunch in the new station buffet before catching the metre gauge train to Châtel St.Denis. We then had a fairly long wait for the bus to Vevey, which gave us a couple of hours to spare before the arrival of the paddle steamer for Ouchy. At Nick's suggestion we travelled on the CEV to St.Légier to await the next train down.

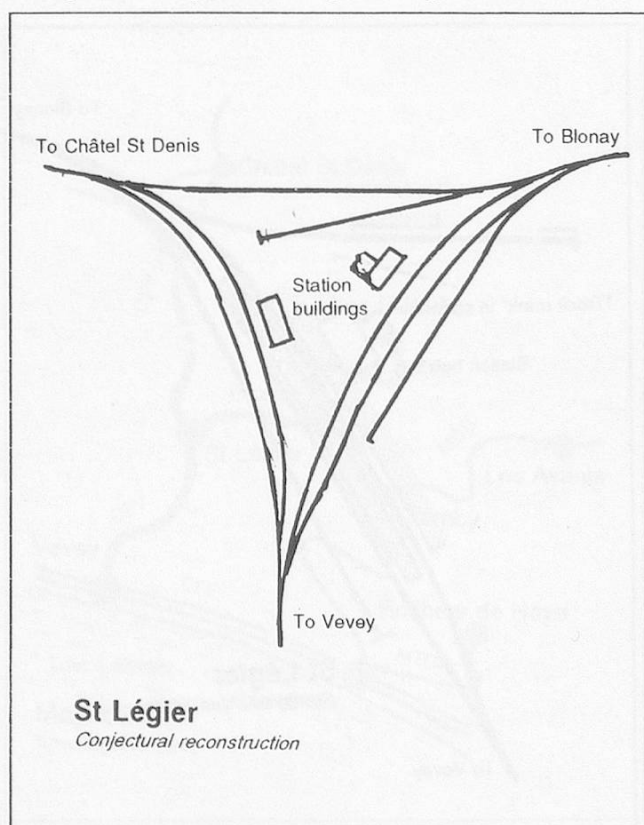
Closer inspection of the station revealed that it most definitely was the prototype for all those OO9 layouts, the small station building is of timber construction and has a nice patina of age. On the other hand the platform is clearly modern, a neat, clean brick paved ramp between the loop tracks. A few trees add to the scenic effect, and some houses provide an opportunity for a little low relief work along the backscene. However, most OO9 layouts got the setting wrong, setting the station in the foreground against a rock face. On the inside of the curve at St.Légier the ground falls away, giving an excellent view of Lac Lemman and the French shore.

Train for Vevey entering the loop at St Légier.





The goods ramp and siding leading into the former cutting. The "track marks" are visible in the foreground

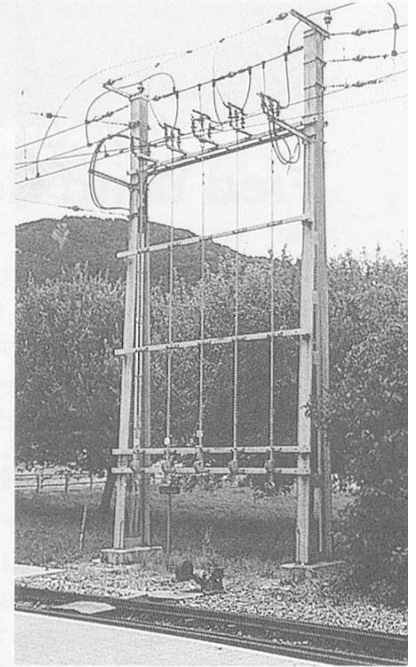
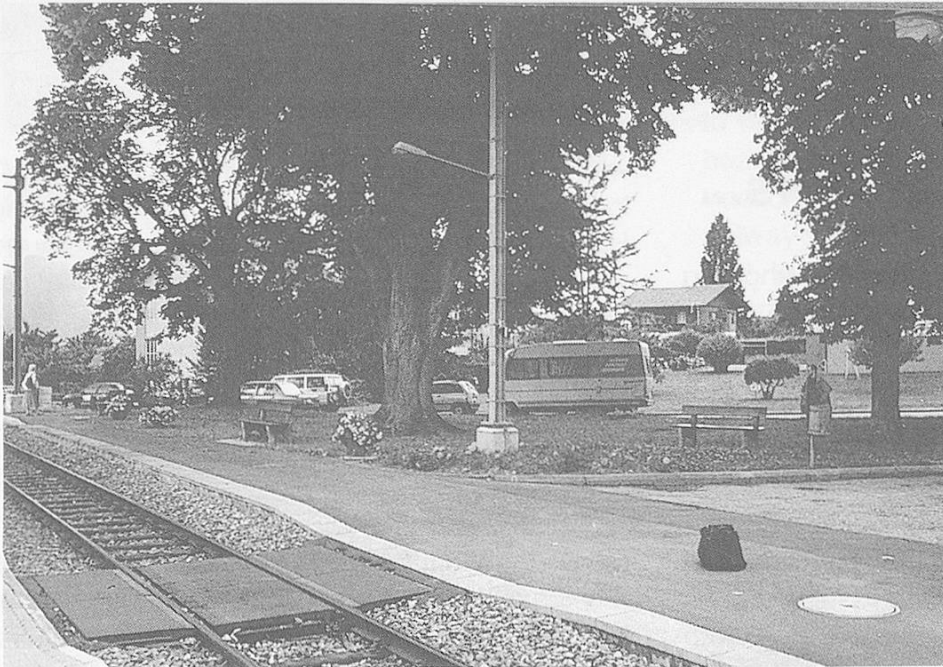


From photographic evidence it is clear that the connection to Ch tel St.Denis was made from the Vevey direction, which makes the location of the present siding, which runs directly into the old cutting, rather odd unless, as I suggest in my conjectural reconstruction, it formed a triangular junction, allowing through running from Montreux via the Blonay-Chamby without reversal at St.L gier. Marks in the yard suggest the existence of additional tracks within the triangle.

Returning to Vevey, we had comfortable time to wander down to the landing stage to catch the PS *Rh ne* for Ouchy where the Lausanne Ouchy (LO) took us up to the main station where we had an excellent dinner in the second class buffet before returning to our base in Bern. Why the second class buffet? It's slightly cheaper, just as comfortable, and unlike the first class buffet, provides a good view of the trains.

Right:
The end of St.Légier
station building. The
wooden shelter has
acquired a concrete
extension.

Below:
The sylvan setting of
St.Légier.



Far right:
Isolating switches and
frame for the overhead.

Right:
The view across Lac
Leman to France from
St.Légier. It will be seen
that the loop is on a
considerable grade. Note
the non-slip foot crossing
in the foreground.

