

Zeitschrift: Swiss express : the Swiss Railways Society journal
Herausgeber: Swiss Railways Society
Band: 2 (1988-1990)
Heft: 6

Rubrik: Paddle-steamer news

Nutzungsbedingungen

Die ETH-Bibliothek ist die Anbieterin der digitalisierten Zeitschriften auf E-Periodica. Sie besitzt keine Urheberrechte an den Zeitschriften und ist nicht verantwortlich für deren Inhalte. Die Rechte liegen in der Regel bei den Herausgebern beziehungsweise den externen Rechteinhabern. Das Veröffentlichen von Bildern in Print- und Online-Publikationen sowie auf Social Media-Kanälen oder Webseiten ist nur mit vorheriger Genehmigung der Rechteinhaber erlaubt. [Mehr erfahren](#)

Conditions d'utilisation

L'ETH Library est le fournisseur des revues numérisées. Elle ne détient aucun droit d'auteur sur les revues et n'est pas responsable de leur contenu. En règle générale, les droits sont détenus par les éditeurs ou les détenteurs de droits externes. La reproduction d'images dans des publications imprimées ou en ligne ainsi que sur des canaux de médias sociaux ou des sites web n'est autorisée qu'avec l'accord préalable des détenteurs des droits. [En savoir plus](#)

Terms of use

The ETH Library is the provider of the digitised journals. It does not own any copyrights to the journals and is not responsible for their content. The rights usually lie with the publishers or the external rights holders. Publishing images in print and online publications, as well as on social media channels or websites, is only permitted with the prior consent of the rights holders. [Find out more](#)

Download PDF: 01.08.2025

ETH-Bibliothek Zürich, E-Periodica, <https://www.e-periodica.ch>

PADDLE-STEAMER NEWS

Thunersee

The long running saga of the paddle-steamer BLUMLISALP has taken a dramatic turn. After a 40,000 plus signature initiative was begun in September 1987 a gravel-dredging company constructed a dry-dock for her. This she entered on 9th October last year for investigation into the practicability of restoration to running order. The target would be August 1991, the 700th anniversary of the founding of the Swiss Confederation. It is understood however that the BLS fear that her return might make one of their newer motor vessels redundant.

Lake Geneva

The MAJOR DAVEL, built 1892 by Escher, Wyss, has been taken to the CGN yard at Lausanne, Ouchy from the French resort of Thonon where she has lain in a derelict condition for some years. The purpose of this move is not clear as the ship would need a large amount of work done and the CGN already has a surplus of paddle-vessels.

Lake Luzern

The STADT LUZERN has gone through further restoration and reconstruction during the winter. The forward part of the ship has been virtually rebuilt and the 1st class saloon on the upper deck has been extended and named the Queen's Saloon, commemorating the journey made aboard by H.M. The Queen in 1980.

Sources — PSPS & BLS



MACKAY MODELS



A LITTLE BIT OF SWITZERLAND IN SCOTLAND

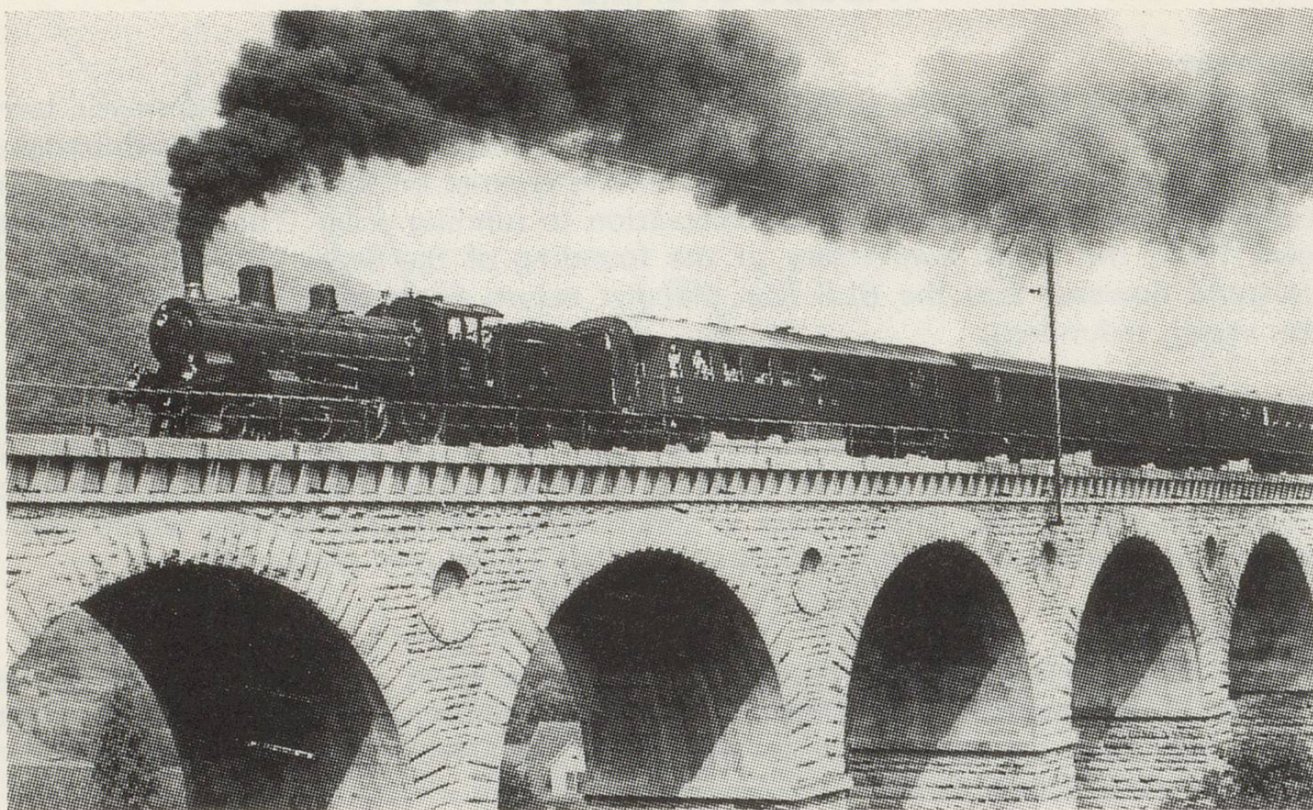
As enthusiasts for the Continental scene ourselves we have Scotland's largest selection of European models in our unique shop below Paisley Gilmour St. Station. We are open 6 days a week from 9.15 to 5.30 and have a long established and efficient mail order service and can offer Swiss Railway Society Members 5% off all advertised prices including the items advertised below. We also stock one of the largest selections of Lima HO and N models in the UK and an S.A.E. will get you our full listing.



ROCO'S fine model of SBB Re4/4 IV. Ref. 43512 HO £59.50.
Ref. 23253 £49.95.

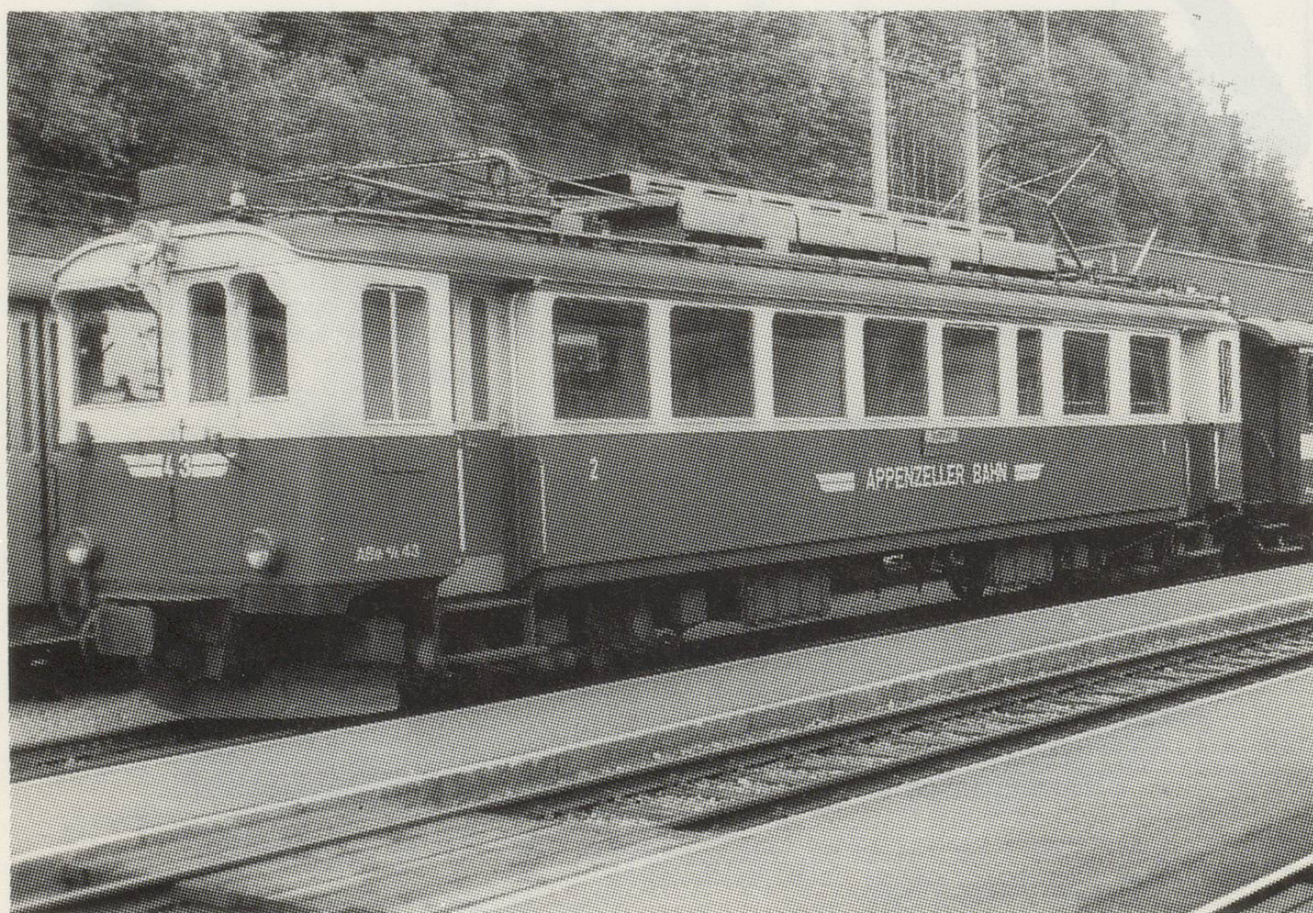
THE OLD BOOKING HALL, 38 Old Sneddon Street, PAISLEY, PA3 2AL, Scotland. Tel: 041-887-9766.

Access (Mastercard), Visa and American Express accepted; mail order standard charge 85p.
Overseas orders less 3/23 VAT; postage at cost. Open Monday-Saturday 9.15-5.30 p.m.



SBB Loco B3/4 No. 1367

Photo: Archive Hornstein



Appenzeller Bahn ABe4/4 No. 43 at Herisau

Photo: P. Over