

Zeitschrift: Swiss express : the Swiss Railways Society journal
Herausgeber: Swiss Railways Society
Band: 1 (1986-1987)
Heft: 7

Artikel: Scotland shows the Swiss flag
Autor: Horspool, G.B.
DOI: <https://doi.org/10.5169/seals-853690>

Nutzungsbedingungen

Die ETH-Bibliothek ist die Anbieterin der digitalisierten Zeitschriften auf E-Periodica. Sie besitzt keine Urheberrechte an den Zeitschriften und ist nicht verantwortlich für deren Inhalte. Die Rechte liegen in der Regel bei den Herausgebern beziehungsweise den externen Rechteinhabern. Das Veröffentlichen von Bildern in Print- und Online-Publikationen sowie auf Social Media-Kanälen oder Webseiten ist nur mit vorheriger Genehmigung der Rechteinhaber erlaubt. [Mehr erfahren](#)

Conditions d'utilisation

L'ETH Library est le fournisseur des revues numérisées. Elle ne détient aucun droit d'auteur sur les revues et n'est pas responsable de leur contenu. En règle générale, les droits sont détenus par les éditeurs ou les détenteurs de droits externes. La reproduction d'images dans des publications imprimées ou en ligne ainsi que sur des canaux de médias sociaux ou des sites web n'est autorisée qu'avec l'accord préalable des détenteurs des droits. [En savoir plus](#)

Terms of use

The ETH Library is the provider of the digitised journals. It does not own any copyrights to the journals and is not responsible for their content. The rights usually lie with the publishers or the external rights holders. Publishing images in print and online publications, as well as on social media channels or websites, is only permitted with the prior consent of the rights holders. [Find out more](#)

Download PDF: 24.01.2026

ETH-Bibliothek Zürich, E-Periodica, <https://www.e-periodica.ch>

"Ticket to the Top" is a well illustrated guide and reference book to some of the transport systems in the Bernese Oberland - rack railways, funiculars, cable cars and chair lifts are all featured.

The useful up to date travel information is well supplemented with statistical details and historical facts. 64 pages fully illustrated with maps and photographs, several of which are in colour. Available from M.G. Cooling, Flat C, 55 Harrington Gardens, London SW7 4JZ. U.K. price £4.50 including postage (add £1 for overseas). (above reviews by S.E. Staff).

Walking in Switzerland by Brian Spencer, Moorland Publishing Co. Ltd. ISBN 0 86190 152 5 £4.95

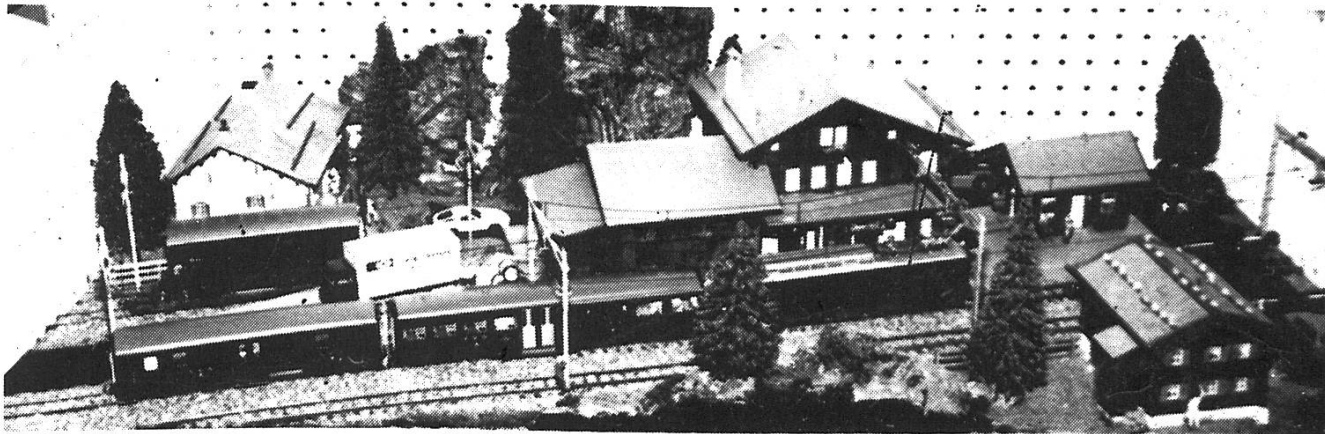
This handy book will make a valuable addition to the library of anyone who loves the scenery of Switzerland. It describes a total of 80 walks based on 10 centres, and gives for each a broad description, particular points of interest, and route instructions. The routes are categorised as easy, moderate or strenuous, and distance and walking times are given for each, as well as major height differences. No climbing is involved, but care is needed at some places.

Each centre has a short preamble describing the area, and giving the relevant Landeskarte der Schweiz map number(s). An introduction describes how to use the book, and makes some general comments on walking in the mountains and safety.

I suppose it is inevitable that a couple of railway-orientated errors have been spotted. One describes the Rhaetian Railway as a 'cog railway', while one of the walks which starts from the Furkablick Hotel shows the nearest station as Furka Halt, which has been closed since the opening of the Furka base tunnel.

The book has only recently been published, and I have not yet had a chance to sample any of the walks, but I hope to fit in a couple in the Autumn as a change from watching trains. (above review by John Jesson)

SCOTLAND SHOWS THE SWISS FLAG by G.B. Horspool



Portable display built by Ron Provan and Graham Horspool. Photo Author.

The Annual Scottish Model Railway Exhibition - organised by the Association of Model Railway Societies in Scotland and held in Glasgow in early March for the past many years has always been characterised by a distinct lack of exhibits with a European bias and, particularly by a total lack of anything to do with Swiss Railways.

In 1984 Ron Provan and myself decided to begin to put matters right by arranging a static display of Swiss Railway models. Accordingly, a small well illuminated showcase was built within which adjustable shelves are used to illustrate the many facets of the Swiss Model Railway Scene.

The showcase is augmented at exhibitions by a T.V. monitor and video recorder on which are shown video films of the Swiss Railway network. Each year, promotional material kindly made available by the Swiss National Tourist Office in London completes the display. Our efforts, represent a modest attempt to publicise the Society to Scots railway enthusiasts. There is, hopefully, more and better to come !!!