

Tourist news

Objektyp: **Group**

Zeitschrift: **The Swiss observer : the journal of the Federation of Swiss Societies in the UK**

Band (Jahr): - **(1977)**

Heft 1730

PDF erstellt am: **22.09.2024**

Nutzungsbedingungen

Die ETH-Bibliothek ist Anbieterin der digitalisierten Zeitschriften. Sie besitzt keine Urheberrechte an den Inhalten der Zeitschriften. Die Rechte liegen in der Regel bei den Herausgebern.

Die auf der Plattform e-periodica veröffentlichten Dokumente stehen für nicht-kommerzielle Zwecke in Lehre und Forschung sowie für die private Nutzung frei zur Verfügung. Einzelne Dateien oder Ausdrucke aus diesem Angebot können zusammen mit diesen Nutzungsbedingungen und den korrekten Herkunftsbezeichnungen weitergegeben werden.

Das Veröffentlichen von Bildern in Print- und Online-Publikationen ist nur mit vorheriger Genehmigung der Rechteinhaber erlaubt. Die systematische Speicherung von Teilen des elektronischen Angebots auf anderen Servern bedarf ebenfalls des schriftlichen Einverständnisses der Rechteinhaber.

Haftungsausschluss

Alle Angaben erfolgen ohne Gewähr für Vollständigkeit oder Richtigkeit. Es wird keine Haftung übernommen für Schäden durch die Verwendung von Informationen aus diesem Online-Angebot oder durch das Fehlen von Informationen. Dies gilt auch für Inhalte Dritter, die über dieses Angebot zugänglich sind.

AMBASSADOR EXPANDS HOTEL CHECK NETWORK

Ambassador Service Hotels of Switzerland has expanded its Hotel Check sales and distribution network to Britain.

Announcing the agreements, ASH executive manager Dr. Peter Kuehler said a deal had been signed with the Swiss Travel Service in Britain.

This brings to 19 the number of tour operators in 11 countries now selling and distributing ASH Hotel Checks since the Swiss group launched its scheme last year.

Under the system, tourists to Switzerland can use prepaid vouchers for bed-and-breakfast accommodation – and sometimes additional meals – at any ASH hotel.

The group links 80 privately-owned, individually-managed hotels in 60 locations throughout Switzerland.

Mr. Emile Soutter, general manager of the Hotel des Bergues in Geneva, has announced his retirement after 47 years in the hotel industry.

Mr. Soutter, who is 64, joined the Hotel des Bergues in 1962 after working at hotels elsewhere in Switzerland and in Britain, Italy, the United States, Bermuda, South Africa, Hong Kong, Israel and Egypt.

Mrs Soutter, who is British, worked at the British Embassy in Berne during the Second World War.

A farewell reception was held at the Hotel des Bergues to mark Mr. and Mrs. Soutter's retirement.



SWISS HOTELS OFFER LOW RATES FOR ELDERLY

A record 362 Swiss hotels are this year offering special rates for elderly tourists from Britain and other countries.

Under the scheme – launched in 1969 by the Swiss Hotels Association – the hotels offer low-priced accommodation and meal arrangements to visitors in possession of a Swiss Federal Railways pensioners' pass.

Since 1976 the offer has also been extended to tourists of any nationality carrying a similar pass issued by a transport undertaking in their own country.

In the case of married couples, both husband and wife qualify for the special low rate – even if only one possesses a pass.

The offers include single night bed-and-breakfast arrangements and half-and full-pension arrangements for visitors wishing to stay for longer periods.

One hundred and twenty of the hotels offer the special rates throughout the year, and the other 240 hotels only during off-season months.

TOURIST NEWS

DAN-AIR STEPS UP ITS SERVICES TO BERNE

British carrier Dan-Air is for the first time operating nine return flights a week this summer on its London (Gatwick)-Berne route.

The regular daily flight will depart Gatwick at 09.30 and arrive at Berne at 11.55, with the return flight leaving Berne at 12.25 and arriving in Gatwick at 14.50.

An additional flight will be operated every Sunday and Thursday from 26th May until 29th September. This flight will leave Gatwick at 15.30 and arrive in Berne at 17.55, with the return flight departing from Berne at 18.25 and arriving in Gatwick at 20.50.

The increase in flights was announced at a travel trade workshop in Berne organised by Airtour Suisse, Dan-Air's representatives in Switzerland. The airline is the only carrier operating between Berne and Britain.

Dan-Air's Berne-based sales manager, Mrs. Doris Ingold, said the carrier had flown a record 15,000 passengers on the route last year and expected to increase this figure to 18,000 during 1977.

Chalet Processed Cheese from Switzerland



The famous and popular Chalet Processed Cheese from Switzerland.

Petit Gruyere in assorted flavours and Instant Cheese Fondue.

Both available from department stores, delicatessen or supermarkets.

Sole UK agents:

Motto Food Co. Ltd., Luton Cold Store,
Skimpot Road, Luton, Bedfordshire
Telex: 826557

CHALET

ARE YOU A YOUNG SWISS?

Do you know the biggest Swiss happening in town? The SWISS YOUTH CLUB, 48 GREAT PETER STREET, LONDON S.W. 1.

Every Sunday from 4 p.m. onwards the Swiss Youth Club under the auspices of the Swiss Churches in London is staging a "get-together" with a variety of happenings. From 4 p.m. to 6.30 p.m. "do-it-yourself" entertainment followed by an ecumenical Church service for those who wish to participate.

At 7.30 p.m. a communal dinner party opens a night of dancing and talking (In Schwizerdütsch). Refreshments are served at the bar by Club members.

Looking forward to seeing you!
Committee of the Swiss Youth Club.

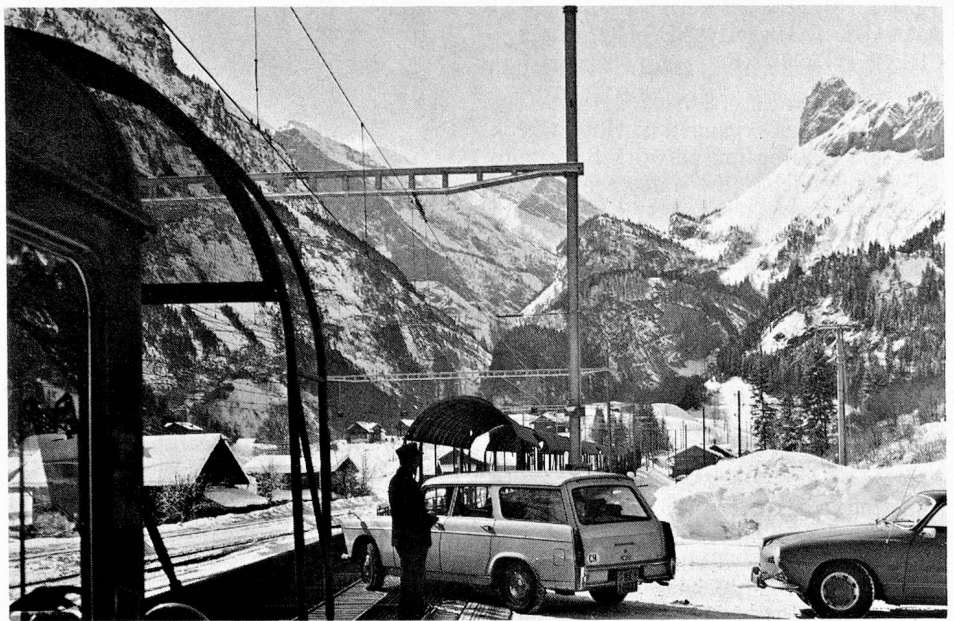
BAF EXPANDS ITS SERVICES

British Air Ferries has announced a "major expansion" of its passenger service between Southend and Basle this summer.

The carrier is now operating five return flights a week, introducing Dart Herald aircraft with seating capacity for up to 48 to 50 passengers.

And all passengers on every flight will be offered a full three-course meal – with free wine and champagne.

The BAF flight will operate every day except Monday and Saturday, departing Southend at 12.30 and arriving in Basle at 14.50. The return flight departs Basle at 15.50 and arrives in Southend at 17.50.



COLIN FARMER'S CAMERA SHOWS US . . .

Switzerland's Berne-Loetschberg-Simplon Railway has transported a record number of vehicles through Kandersteg in the Bernese Oberland – for the second time in eight days.

The record figures follow the recent completion of a Sw.Fr. 50 million improvement scheme, with new drive-on and drive-off facilities, aimed at speeding

up traffic conveyance on one of the busiest tourist routes linking northern and southern Europe.

The first record mark of 5,397 vehicles was set on a Saturday – and this was then beaten the following Saturday with a total of 6,168.

Average daily load throughout the year is nearly 1,500, with an annual total of well over half a million vehicles.

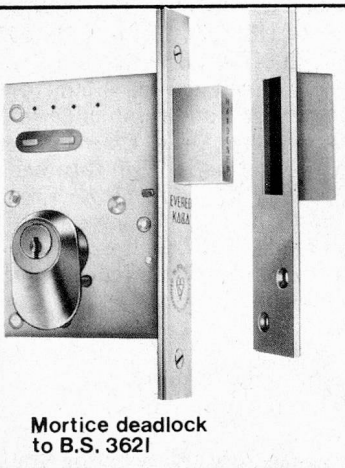
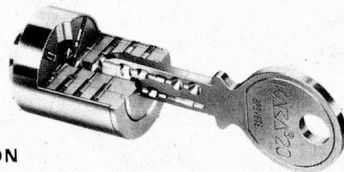
KABA 20 SECURITY LOCKS

For controlled access

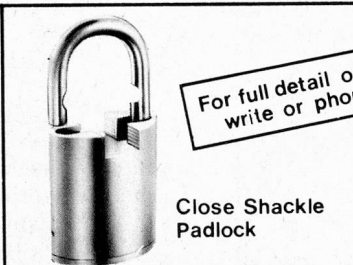
- OVER 100 MILLION DIFFERS ● PERSONAL KEY REGISTRATION ● CONVENIENT FLAT REVERSIBLE KEY
- MORE FLEXIBILITY FOR LOCKING SYSTEMS (REDUCES AMOUNT OF KEYS CIRCULATING)

THE SAME KEY DIMENSIONS ARE RETAINED TO OPERATE

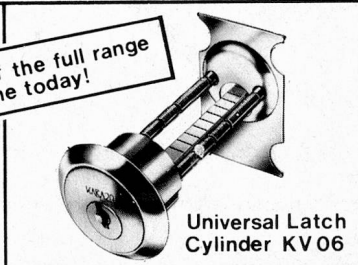
- MORTICE DEADLOCKS (B.S. 3621)
- TWO-BOLT MORTICE LOCKS
- RIM LATCHES
- PADLOCKS
- CUPBOARD LOCKS
- KNOBSETS
- CAM LOCKS
- KEY SWITCHES
- SPECIAL DESIGN LOCKS TO CUSTOMERS SPECIFICATION



Mortice deadlock to B.S. 3621



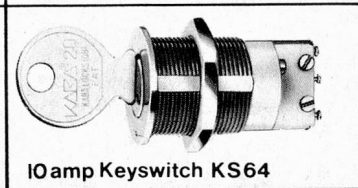
Close Shackle Padlock



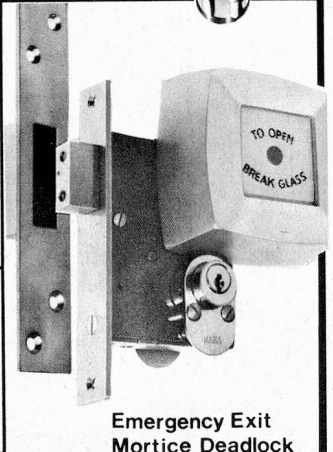
Universal Latch Cylinder KV06



KV07XS Mortice Cylinder



IOamp Keyswitch KS64



Emergency Exit Mortice Deadlock

KABA LOCKS LTD.

7, Riverdene Industrial Estate, Molesey Road, Hersham, Walton-on-Thames, Surrey, KT12 4RG, England.
Tel: Walton-on-Thames 41866 Telex: 928243