

Where to eat ... Where to stay / Where to buy

Objektyp: **Group**

Zeitschrift: **The Swiss observer : the journal of the Federation of Swiss Societies in the UK**

Band (Jahr): - **(1968)**

Heft 1545

PDF erstellt am: **19.09.2024**

Nutzungsbedingungen

Die ETH-Bibliothek ist Anbieterin der digitalisierten Zeitschriften. Sie besitzt keine Urheberrechte an den Inhalten der Zeitschriften. Die Rechte liegen in der Regel bei den Herausgebern.

Die auf der Plattform e-periodica veröffentlichten Dokumente stehen für nicht-kommerzielle Zwecke in Lehre und Forschung sowie für die private Nutzung frei zur Verfügung. Einzelne Dateien oder Ausdrucke aus diesem Angebot können zusammen mit diesen Nutzungsbedingungen und den korrekten Herkunftsbezeichnungen weitergegeben werden.

Das Veröffentlichen von Bildern in Print- und Online-Publikationen ist nur mit vorheriger Genehmigung der Rechteinhaber erlaubt. Die systematische Speicherung von Teilen des elektronischen Angebots auf anderen Servern bedarf ebenfalls des schriftlichen Einverständnisses der Rechteinhaber.

Haftungsausschluss

Alle Angaben erfolgen ohne Gewähr für Vollständigkeit oder Richtigkeit. Es wird keine Haftung übernommen für Schäden durch die Verwendung von Informationen aus diesem Online-Angebot oder durch das Fehlen von Informationen. Dies gilt auch für Inhalte Dritter, die über dieses Angebot zugänglich sind.

Where to eat . . . Where to stay

SHREWSBURY — PRINCE RUPERT HOTEL (Centre Ville) Tel. 52461 — 50 chambres tout confort. Le fameux Restaurant est ouvert tous les jours jusqu'à 23h. Fondue et autres spécialités suisses. Victor and Betty Hendel (Swiss).

LODORE SWISS HOTEL, KESWICK. English Lakeland. Tel: Borrowdale 285 (3 lines). On the Borrowdale Road, best position by the edge of Lake Derwentwater — 70 rooms, 40 bathrooms; central heating, and telephones in all rooms; lift to all floors. Swiss Cuisine; Games Room; Children's Nursery (Resident Nurse); Tennis Court; Boating, Fishing, Bathing — Heated Swimming Pool. Tariff sent on request. Under the personal supervision of Mrs. M. M. England (Swiss), Res. Proprietors R. A. and M. M. England.

LADBROKE GARDENS HOTEL, Ladbroke Gardens, Kensington Park Road, London, W.11. PARK 6468/9 and 8569. Near Hyde Park; 60 bedrooms with gas fire, h. and c. running water; moderate terms. Proprietors J. Müller and Family.

SACKVILLE HOTEL, KINGSWAY, HOVE 3, SUSSEX. (Tel: Brighton 736292). Overlooking the sea. 43 rooms all with private bathrooms, central heating and telephones. Lock-up garages. Continental Cuisine. Manager: F. E. Kung (Swiss).

CHATSWORTH PRIVATE HOTEL, Salisbury Road, Hove, Sussex. Long established Hotel in quiet position, near to Sea and Shops. Central heating in all rooms. Bed and Breakfast from 30/- . Partial Board from 10-12 gns. Proprietors Mr. & Mrs. F. Gerber. Telephone Brighton 737360.

FOLEY ARMS HOTEL, GREAT MALVERN, WORCS. AA ★★RAC. Tel: 3397. Beautiful view across Severn Valley from XVIIIth century coaching inn. 30 rooms, 12 bathrooms. Central heating throughout. From 2 Gns. for bed and breakfast. Large car park, lock-up garages, 2 acres of garden. A. Walliman & Family.

ORPHEUS CLUB & RESTAURANT, DUMVILLE HOUSE. ST. MARY-AT-HILL. EASTCHEAP, E.C.3. Tel. Ground Floor AVE 6279, First Floor AVE 6089. Open from 11 a.m. to 7 p.m. Bar and Snack Bar on Ground Floor. Bar and Restaurant on the First Floor. Private parties catered for. Proprietor: Albert John Gluck (Swiss).

SWISS CENTRE RESTAURANTS, Leicester Square, W.1. Tel: 01-734 1291. Open from 9 a.m. — midnight. Four restaurants offering the specialities of the different regions of Switzerland as well as international cuisine.

NORFOLK COURT HOTEL, 20 Norfolk Square, Hyde Park, London, W.2. (Tel: PAD 4963). 1 minute Paddington Station. Underground and Buses. Hot and cold water in all rooms, Central Heating in Public Rooms. Bed-breakfast-Bath from £1.5.0 per night or £7.15.0 per week. Free car park. Proprietor: Ad. Schmid.

SAVOY HOTEL, CHELTENHAM, GLOS. Savoy Bar — Savoy Grill. AA★★★RAC. Tel. 27788. Quiet yet in centre of Town. 45 rooms, 14 bathrooms, central heating throughout. From 2 Gns. for bed and breakfast. Large car park, lock-up garages, 2 acres of garden. A. Wallimann & Family.

HIGHCLIFF HOTEL, BOURNEMOUTH, Tel. 27702. 500ft. sea frontage, facing due south, 120 centrally heated rooms. 60 private bathrooms. Heated open air swimming pool. Fully licensed. Open all year. R. Wild and Family, late of Zurich.

ROYAL COURT HOTEL, Sloane Square, London, S.W.1. (Tel: SLOane 9191). 100 rooms with telephone, central heating and radio. 60 private bathrooms. Grill, Restaurant, American Bar. R. Wild and Family, late of Zurich.

GLENDOWER HOTEL, Glendower Place, London, S.W.7. Tel: KENsington 4462/3/4. Most central Swiss Hotel in London. Completely modernised. 120 rooms with phone, some with private bath. Fully Licensed. Excellent Continental Cuisine. Room and Breakfast from 42/- . Weekly Terms on request. Private parties and weddings catered for. A. Schmid and Family.

VALCHERA'S RESTAURANT, RICHMOND, SURREY, 30 The Quadrant (near Railway Station). Tel: RIC 0648. Continental cuisine, choicest wines "Venez — vous reviendrez". Proprietor: M. A. Jacomelli.

MONTANA HOTEL (Licensed), 67 Gloucester Road, S.W.7. Tel: KNIGHTSbridge 7654. Ample accommodation with bath and w.c. or shower and w.c. Central Heating throughout. Restaurant. Swiss Specialities, Fondue Bourguignonne. (Ring up for table reservation). Manager: E. Bonvin.

Where to buy

FINEST QUALITY MONGOLIAN GOATSKIN RUGS size 3' x 5' approx. white or black colour @ £6.17.0: AURORA, 18 Bride Lane, E.C.4, Tel: 01-353 3811.

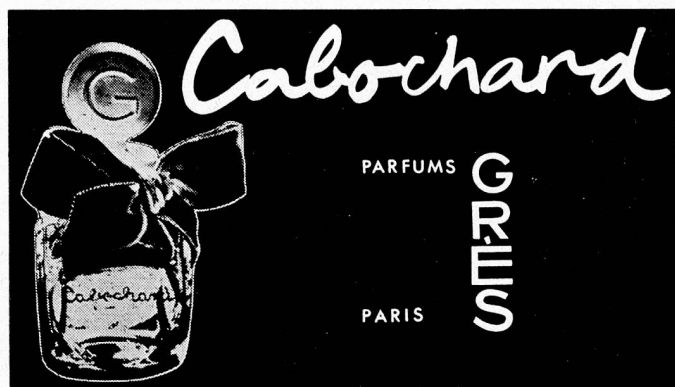
SWISS SPECIALITIES

SAUSAGES — CHEESE — CHOCOLATES
HERO CONSERVES — BISCUITS — ROCO CONSERVES

go to

BARTHOLDI'S

at 4 Charlotte Street, London W1
Telephone MUS (636) 3762/3
ALSO FIRST CLASS MEAT



Sole Distributors: Buser & Co. Ltd., 12 Grafton Street, W.1. Tel: 01-629 5977

SWISS OBSERVER

PREPAID SUBSCRIPTION RATES (Fortnightly issue)

UNITED KINGDOM	{	6 issues, post free	9/6
		12 issues, post free	18/-
		24 issues, post free	35/-
SWITZERLAND	{	12 issues, post free	Frs. 11.—
		24 issues, post free	Frs. 21.—

Swiss subscriptions may be paid into Postscheck-Konto Basle 40—5718