

Zeitschrift: The Swiss observer : the journal of the Federation of Swiss Societies in the UK

Herausgeber: Federation of Swiss Societies in the United Kingdom

Band: - (1981)

Heft: 1781

Rubrik: Swiss Holiday Scene

Nutzungsbedingungen

Die ETH-Bibliothek ist die Anbieterin der digitalisierten Zeitschriften auf E-Periodica. Sie besitzt keine Urheberrechte an den Zeitschriften und ist nicht verantwortlich für deren Inhalte. Die Rechte liegen in der Regel bei den Herausgebern beziehungsweise den externen Rechteinhabern. Das Veröffentlichen von Bildern in Print- und Online-Publikationen sowie auf Social Media-Kanälen oder Webseiten ist nur mit vorheriger Genehmigung der Rechteinhaber erlaubt. [Mehr erfahren](#)

Conditions d'utilisation

L'ETH Library est le fournisseur des revues numérisées. Elle ne détient aucun droit d'auteur sur les revues et n'est pas responsable de leur contenu. En règle générale, les droits sont détenus par les éditeurs ou les détenteurs de droits externes. La reproduction d'images dans des publications imprimées ou en ligne ainsi que sur des canaux de médias sociaux ou des sites web n'est autorisée qu'avec l'accord préalable des détenteurs des droits. [En savoir plus](#)

Terms of use

The ETH Library is the provider of the digitised journals. It does not own any copyrights to the journals and is not responsible for their content. The rights usually lie with the publishers or the external rights holders. Publishing images in print and online publications, as well as on social media channels or websites, is only permitted with the prior consent of the rights holders. [Find out more](#)

Download PDF: 13.08.2025

ETH-Bibliothek Zürich, E-Periodica, <https://www.e-periodica.ch>

Swiss Holiday Scene

NEXT year the Gotthard Railway will be 100 years old. Highlight of the anniversary will be the opening of a new hall for rail traffic at the Swiss Transport Museum in Lucerne on July 1, 1982.

Celebrations have started this year with a live railway show presented at the loop tunnels in Wassen every Tuesday and Thursday until October 8. A shelter for observers has been set up on the hillside opposite the railway lines.

The scheduled passenger and goods services are supplemented by trains consisting of old electric rail cars. A circular in four languages is available to foreign visitors. Admission is free.

This summer an exhibition of photos and documents compiled by railway enthusiasts has been held at Goeschenen station, while minerals and species of the Gotthard fauna have been displayed at the school in Airolo.

Mittelland season ticket

THE regional season ticket for the Bernese Mittelland, issued for the first time last year, has been a great success. It allows free travel on five days and half-fare travel on the remaining 10 days. It is available at SFr. 60.- on a 2000 km transport network stretching from the Jura to the Alps.

Brochures available from Swiss National Tourist Office in London.

Engelberg

FROM now until October the Engelberg Tourist Office is organising various holiday attractions such as cookery classes, grill parties and exhibitions.

Details from Official Tourist Office, 6390 Engelberg, Switzerland.

Appenzell

ADVANTAGEOUS weekend packages are offered by the Appenzell-Ausserhoden Tourist Office. Local attractions include a museum which allows the visitor to try wood carving and the showcase dairy in Stein where the making of Appenzell cheese can be observed.

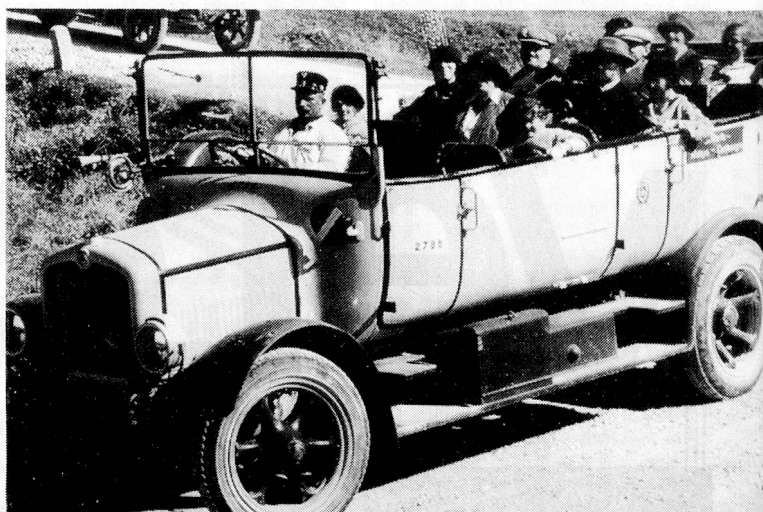
Details from Appenzell Tourist Office, 9043 Trogen, Switzerland.



A Swiss postal coach today – and as they used to

THIS summer sees the 75th anniversary of the inauguration of the Swiss postal motor coach service. It was in 1906 that the service was motorised, on the route from Berne to Detligen and Papiermühle. At that time automobiles were met with much apprehension, and it was not until 1918 that the last horse-drawn carriage was replaced by a motor vehicle.

Today more than 1,300 coaches carry about 63 million people every year on a network stretching more than 7,700 km.



Machinery exhibition

SPEMAC – the first International Exhibition of Special Machines – will be held in Geneva between December 1 and 6 at the Palais des Expositions. This new exhibition, the only one of its kind, will provide a much-needed forum for manufacturers of special processes and those companies faced by specific problems. Design consultancies and research centres will display special machines which have been tested in laboratories or in industrial use.

Details from SPEMAC, 8 rue de 31 Decembre, 1207 Geneva, Switzerland.

Holiday courses in the Aletsch Forest

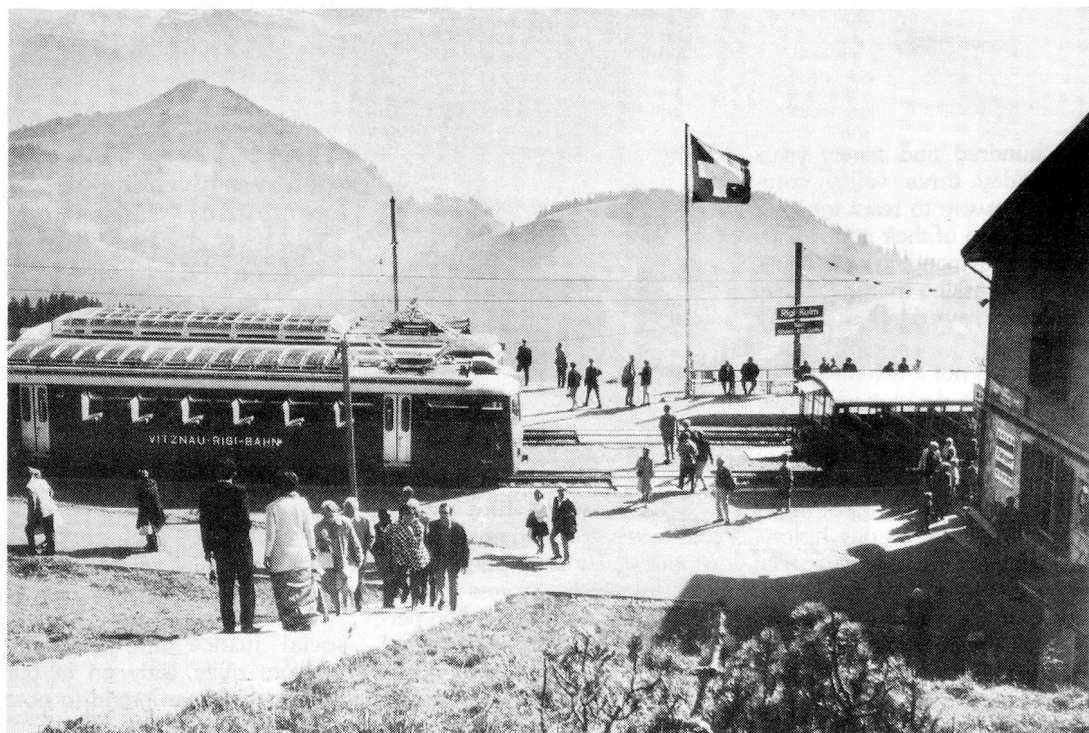
FOR the sixth time the Aletsch Forest Park has been opened to the public this year. A special card giving reductions on different facilities is available for tourists who stay three nights or longer.

Also on offer for the first time are field study and workshop weeks, designed to make the visitor familiar with the glacier area.

Details from Schweizerischer Bund fuer Naturschutz, 4020 Basle, Switzerland.

By steam from Winterthur

THE next public excursion for individuals with the steam train "Mikado Express" will take place on Sunday, September 13, taking the passengers from Winterthur via Basle to Mulhouse and back. The train will leave Winterthur Station at 9am and various excursions are planned en route.



Vitznau-Rigi railway centenary

TO celebrate its 100th anniversary the Vitznau Rigi Railway Company is holding various special events such as steam excursions on every first and third Sunday of the month, sunset rides and special journeys for senior citizens.

Details from Rigibahn-Gesellschaft, 6354 Vitznau, Switzerland.

Tickets are available through any station of the Swiss Federal Railways.

Ballenberg museum extended

THE open air museum Ballenberg in Brienz has extended its collection of historical buildings by three 17th century houses. Another novelty is a collection of antique watches. The museum is open daily between 9am and 5.30pm until the end of October.

Details from Schweizerisches Freilichtmuseum, Ballenberg, 3855 Brienz, Switzerland.

Motoring in the Watch Country

FOUR special "Watch Industry Tours" have been organised by the Institut Neuchâtelois. Each

tour takes the motorist to the famous watch industry centres between Neuchâtel and the French border, and many museums on the way show the history and importance of watch making in Western Switzerland.

Details from Neuchâtel Tourist Office, Place Numa-Droz 1, 2001 Neuchâtel, Switzerland.

port, welcome drink and overnight stay at a romantic hotel as well as excursions.

Details from Schaffhausen Tourist Office, Vorstadt 12, 8201 Schaffhausen, Switzerland.

Fishing museum at Neuhausen

A NEW museum on fishing has been opened in Neuhausen by the Rhine Falls. Salmon fishing used to be very important in the area but nowadays only the eel manages to get over the 24m high waterfall of the Rhine at Neuhausen.

Romance in Schaffhausen

THE recently opened Schaffhausen Tourist Office is offering special holiday packages including car rental from Zurich Air-

Events of the month

| | | | | | |
|----------|-------------------|---|-------------------|--------------------------|---|
| Sept | Riederalp | Descent of the cattle from the high pastures, distribution of the cheese, | Sept 12 | Meiringen-Hasliberg | Mägisalp: «Chästeilet», popular festival |
| Sept 1 | Baden | descent of the sheep | Sept 12/13 | Fribourg | «Bénichon», ancient custom |
| Sept 3 | Riffenmatt | Kurplatz: Verena festival | Sept 13 | Aarau | Saalebau: Jubilee yodellers' rally |
| | | «Schafscheid», descent of the sheep from the alps and popular festival | Sept 13 | Lötschental | Ferden: Procession and parade of «God's Grenadiers» |
| Sept 4-6 | La Chaux-de-Fonds | «Fête de la montre et braderie 1981». Motto: «fou-frais-gai» | Sept 14 | Einsiedeln | Abbey Square: «Engelweihe» |
| Sept 4-6 | La Neuveville | Wine festival | Sept 18-20, 26/27 | Lullier-Jussy, Neuchâtel | Wine festivals |
| Sept 6 | Belalp | Shepherds' festival | Sept 26/27 | Locarno | Grape festival |
| Sept 6 | Leukerbad | Folklore festival with costume dancing | Sept 30 | Zäziwil i.E. | «Brächete», ancient custom |
| Sept 11 | Aarau | «Bachfischet», traditional custom | Sept 30 - Oct 11 | Martigny | Comptoir festival |
| Sept 12 | Aarau | Saalebau: Yodellers' clubs jubilee concert | Sept, end | Justistal | «Chästeilet», popular festival |