

# The Southern Area Swiss Club

Objektyp: **Group**

Zeitschrift: **The Swiss observer : the journal of the Federation of Swiss Societies in the UK**

Band (Jahr): - **(1980)**

Heft 1761

PDF erstellt am: **22.06.2024**

## **Nutzungsbedingungen**

Die ETH-Bibliothek ist Anbieterin der digitalisierten Zeitschriften. Sie besitzt keine Urheberrechte an den Inhalten der Zeitschriften. Die Rechte liegen in der Regel bei den Herausgebern.

Die auf der Plattform e-periodica veröffentlichten Dokumente stehen für nicht-kommerzielle Zwecke in Lehre und Forschung sowie für die private Nutzung frei zur Verfügung. Einzelne Dateien oder Ausdrucke aus diesem Angebot können zusammen mit diesen Nutzungsbedingungen und den korrekten Herkunftsbezeichnungen weitergegeben werden.

Das Veröffentlichen von Bildern in Print- und Online-Publikationen ist nur mit vorheriger Genehmigung der Rechteinhaber erlaubt. Die systematische Speicherung von Teilen des elektronischen Angebots auf anderen Servern bedarf ebenfalls des schriftlichen Einverständnisses der Rechteinhaber.

## **Haftungsausschluss**

Alle Angaben erfolgen ohne Gewähr für Vollständigkeit oder Richtigkeit. Es wird keine Haftung übernommen für Schäden durch die Verwendung von Informationen aus diesem Online-Angebot oder durch das Fehlen von Informationen. Dies gilt auch für Inhalte Dritter, die über dieses Angebot zugänglich sind.

## THE SOUTHERN AREA SWISS CLUB

We are delighted to have been given space in the *Swiss Observer*, especially as we are still very young and small. We were "born" rather unexpectedly on 10th November, 1978, and our number has increased from nine Swiss ladies to over 30 Swiss names on the mailing list. Due to long distances we have not yet had the chance to personally meet everyone. There is still much room for growth and development.

We meet on the first Friday of every month in the Club Room of Oak Farm Centre in Farnborough, which is a central, comfortable and convenient place. Our grandest occasion so far has been the visit of Dr. Peter Schweizer, Legal and Press Attaché from the Swiss Embassy. His visit on Friday, 1st June was greatly appreciated by us

all and he gave us a most informative and lively talk on the duties and the rights of the Swiss abroad. Did you know there are 8,000 Swiss of dual nationality in Britain, and 6,000 of Swiss nationality? Some of that number must be in our area and we hope to hear from you. Should you live too far to come for an evening meeting one of us could put you up for the night.

Our next big event was the 1st August celebrations and barbeque at one of our members homes in Farnham.

A.D.

Please contact either our chairman Mrs. Anne Doy, 8 James Way, Camberley, Surrey (telephone Camberley 64208) or our secretary Mrs. Verena Rudkin, 1 Chiltern Avenue, Farnborough, Hants (telephone Farnborough 47948) for further information.

## BIRTHDAYS AND ANNIVERSARIES

Mr. Willy Renz will be 81 on 2nd January, on the same day as Mr. Carl Nater (St. Moritz) celebrates his 71st birthday. Mr. E. P. Locher will be 86 on 4th January and Mrs. L. Mechr will have her birthday on 12th January.

Mrs. Dorothy Keller, Dr. E. Thalmann and Mr. J. P. Christen (Basle) all have their birthdays on 14th January.

The 16th January is Consul J. Keller's birthday and Mr. John M. Badel will be 66 on the same day. Mrs. J. Weist will be 84 on 29th January.

The following couples will celebrate their wedding anniversary: Mr. and Mrs. T. Haller their 37th on 9th January, Mr. and Mrs. E. Thalmann their 37th on 23rd January and Mr. and Mrs. G. Eusebio their 40th on 27th January.

Congratulations and very best wishes to all these readers and any others who have a special reason for celebrating in January.



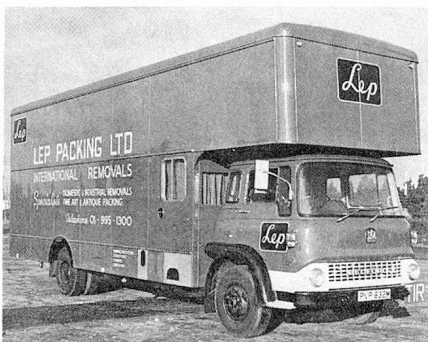
Mrs. Anne Doy and Dr. P. Schweizer.

For Information, Advice or Help contact the

### SWISS WELFARE OFFICE for young people

31 Conway Street London W1P 5HL  
telephone 01-387 3608

Underground Stations:  
Great Portland Street  
Warren Street



### TRAVEL WEEKLY TO AND FROM SWITZERLAND AND ENGLAND

Providing DOOR TO DOOR SERVICES  
with vans specially equipped to carry

- HOUSEHOLD REMOVALS
- EXHIBITION GOODS
- WORKS OF ART - MACHINERY

For full information contact:-

LEP PACKING LTD., CORNEY ROAD, CHISWICK, LONDON W4  
TEL: 01-995 1300 (Ext. 110) TELEX: 23944