

**Zeitschrift:** The Swiss observer : the journal of the Federation of Swiss Societies in the UK

**Herausgeber:** Federation of Swiss Societies in the United Kingdom

**Band:** - (1968)

**Heft:** 1545

**Rubrik:** Where to eat ... Where to stay / Where to buy

### **Nutzungsbedingungen**

Die ETH-Bibliothek ist die Anbieterin der digitalisierten Zeitschriften auf E-Periodica. Sie besitzt keine Urheberrechte an den Zeitschriften und ist nicht verantwortlich für deren Inhalte. Die Rechte liegen in der Regel bei den Herausgebern beziehungsweise den externen Rechteinhabern. Das Veröffentlichen von Bildern in Print- und Online-Publikationen sowie auf Social Media-Kanälen oder Webseiten ist nur mit vorheriger Genehmigung der Rechteinhaber erlaubt. [Mehr erfahren](#)

### **Conditions d'utilisation**

L'ETH Library est le fournisseur des revues numérisées. Elle ne détient aucun droit d'auteur sur les revues et n'est pas responsable de leur contenu. En règle générale, les droits sont détenus par les éditeurs ou les détenteurs de droits externes. La reproduction d'images dans des publications imprimées ou en ligne ainsi que sur des canaux de médias sociaux ou des sites web n'est autorisée qu'avec l'accord préalable des détenteurs des droits. [En savoir plus](#)

### **Terms of use**

The ETH Library is the provider of the digitised journals. It does not own any copyrights to the journals and is not responsible for their content. The rights usually lie with the publishers or the external rights holders. Publishing images in print and online publications, as well as on social media channels or websites, is only permitted with the prior consent of the rights holders. [Find out more](#)

**Download PDF:** 14.12.2025

**ETH-Bibliothek Zürich, E-Periodica, <https://www.e-periodica.ch>**

## Where to eat . . . Where to stay

**SHREWSBURY — PRINCE RUPERT HOTEL** (Centre Ville) Tel. 52461 — 50 chambres tout confort. Le fameux Restaurant est ouvert tous les jours jusqu'à 23h. Fondue et autres spécialités suisses. Victor and Betty Hendel (Swiss).

**LODORE SWISS HOTEL, KESWICK.** English Lakeland. Tel: Borrowdale 285 (3 lines). On the Borrowdale Road, best position by the edge of Lake Derwentwater — 70 rooms, 40 bathrooms; central heating, and telephones in all rooms; lift to all floors. Swiss Cuisine; Games Room; Children's Nursery (Resident Nurse); Tennis Court; Boating, Fishing, Bathing — Heated Swimming Pool. Tariff sent on request. Under the personal supervision of Mrs. M. M. England (Swiss), Res. Proprietors R. A. and M. M. England.

**LADBROKE GARDENS HOTEL,** Ladbroke Gardens, Kensington Park Road, London, W.11. PARK 6468/9 and 8569. Near Hyde Park; 60 bedrooms with gas fire, h. and c. running water; moderate terms. Proprietors J. Müller and Family.

**SACKVILLE HOTEL, KINGSWAY, HOVE 3, SUSSEX.** (Tel: Brighton 736292). Overlooking the sea. 43 rooms all with private bathrooms, central heating and telephones. Lock-up garages. Continental Cuisine. Manager: F. E. Kung (Swiss).

**CHATSWORTH PRIVATE HOTEL,** Salisbury Road, Hove, Sussex. Long established Hotel in quiet position, near to Sea and Shops. Central heating in all rooms. Bed and Breakfast from 30/- . Partial Board from 10-12 gns. Proprietors Mr. & Mrs. F. Gerber. Telephone Brighton 737360.

**FOLEY ARMS HOTEL, GREAT MALVERN, WORCS. AA ★★RAC.** Tel: 3397. Beautiful view across Severn Valley from XVIIIth century coaching inn. 30 rooms, 12 bathrooms. Central heating throughout. From 2 Gns. for bed and breakfast. Large car park, lock-up garages, 2 acres of garden. A. Walliman & Family.

**ORPHEUS CLUB & RESTAURANT, DUMVILLE HOUSE. ST. MARY-AT-HILL. EASTCHEAP, E.C.3.** Tel. Ground Floor AVE 6279, First Floor AVE 6089. Open from 11 a.m. to 7 p.m. Bar and Snack Bar on Ground Floor. Bar and Restaurant on the First Floor. Private parties catered for. Proprietor: Albert John Gluck (Swiss).

**SWISS CENTRE RESTAURANTS,** Leicester Square, W.1. Tel: 01-734 1291. Open from 9 a.m. — midnight. Four restaurants offering the specialities of the different regions of Switzerland as well as international cuisine.

**NORFOLK COURT HOTEL,** 20 Norfolk Square, Hyde Park, London, W.2. (Tel: PAD 4963). 1 minute Paddington Station. Underground and Buses. Hot and cold water in all rooms, Central Heating in Public Rooms. Bed-breakfast-Bath from £1.5.0 per night or £7.15.0 per week. Free car park. Proprietor: Ad. Schmid.

**SAVOY HOTEL, CHELTENHAM, GLOS.** Savoy Bar — Savoy Grill. AA★★★RAC. Tel. 27788. Quiet yet in centre of Town. 45 rooms, 14 bathrooms, central heating throughout. From 2 Gns. for bed and breakfast. Large car park, lock-up garages, 2 acres of garden. A. Wallimann & Family.

**HIGHCLIFF HOTEL, BOURNEMOUTH, Tel. 27702.** 500ft. sea frontage, facing due south, 120 centrally heated rooms. 60 private bathrooms. Heated open air swimming pool. Fully licensed. Open all year. R. Wild and Family, late of Zurich.

**ROYAL COURT HOTEL,** Sloane Square, London, S.W.1. (Tel: SLOane 9191). 100 rooms with telephone, central heating and radio. 60 private bathrooms. Grill, Restaurant, American Bar. R. Wild and Family, late of Zurich.

**GLENDOWER HOTEL,** Glendower Place, London, S.W.7. Tel: KENsington 4462/3/4. Most central Swiss Hotel in London. Completely modernised. 120 rooms with phone, some with private bath. Fully Licensed. Excellent Continental Cuisine. Room and Breakfast from 42/- . Weekly Terms on request. Private parties and weddings catered for. A. Schmid and Family.

**VALCHERA'S RESTAURANT, RICHMOND, SURREY,** 30 The Quadrant (near Railway Station). Tel: RIC 0648. Continental cuisine, choicest wines "Venez — vous reviendrez". Proprietor: M. A. Jacomelli.

**MONTANA HOTEL** (Licensed), 67 Gloucester Road, S.W.7. Tel: KNIGHTSbridge 7654. Ample accommodation with bath and w.c. or shower and w.c. Central Heating throughout. Restaurant. Swiss Specialities, Fondue Bourguignonne. (Ring up for table reservation). Manager: E. Bonvin.

## Where to buy

**FINEST QUALITY MONGOLIAN GOATSKIN RUGS** size 3' x 5' approx. white or black colour @ £6.17.0: AURORA, 18 Bride Lane, E.C.4, Tel: 01-353 3811.

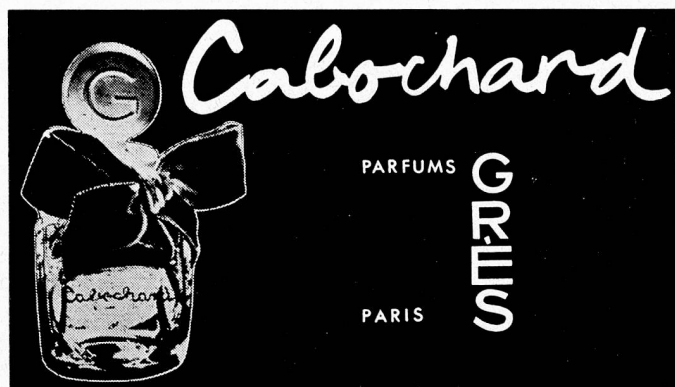
**SWISS SPECIALITIES**

SAUSAGES — CHEESE — CHOCOLATES  
HERO CONSERVES — BISCUITS — ROCO CONSERVES

go to

**BARTHOLDI'S**

at 4 Charlotte Street, London W1  
Telephone MUS (636) 3762/3  
ALSO FIRST CLASS MEAT



Sole Distributors: Buser & Co. Ltd., 12 Grafton Street, W.1. Tel: 01-629 5977

## SWISS OBSERVER

### PREPAID SUBSCRIPTION RATES (Fortnightly issue)

UNITED KINGDOM	{	6 issues, post free	9/6
		12 issues, post free	18/-
		24 issues, post free	35/-
SWITZERLAND	{	12 issues, post free	Frs. 11.—
		24 issues, post free	Frs. 21.—

Swiss subscriptions may be paid into Postscheck-Konto Basle 40—5718