

Société de secours mutuels des Suisses à Londres

Objekttyp: **Group**

Zeitschrift: **The Swiss observer : the journal of the Federation of Swiss Societies in the UK**

Band (Jahr): - **(1968)**

Heft 1545

PDF erstellt am: **28.04.2024**

Nutzungsbedingungen

Die ETH-Bibliothek ist Anbieterin der digitalisierten Zeitschriften. Sie besitzt keine Urheberrechte an den Inhalten der Zeitschriften. Die Rechte liegen in der Regel bei den Herausgebern.

Die auf der Plattform e-periodica veröffentlichten Dokumente stehen für nicht-kommerzielle Zwecke in Lehre und Forschung sowie für die private Nutzung frei zur Verfügung. Einzelne Dateien oder Ausdrucke aus diesem Angebot können zusammen mit diesen Nutzungsbedingungen und den korrekten Herkunftsbezeichnungen weitergegeben werden.

Das Veröffentlichen von Bildern in Print- und Online-Publikationen ist nur mit vorheriger Genehmigung der Rechteinhaber erlaubt. Die systematische Speicherung von Teilen des elektronischen Angebots auf anderen Servern bedarf ebenfalls des schriftlichen Einverständnisses der Rechteinhaber.

Haftungsausschluss

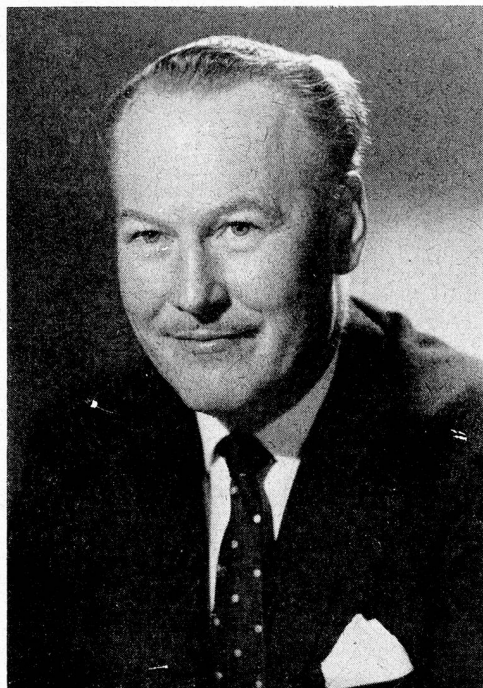
Alle Angaben erfolgen ohne Gewähr für Vollständigkeit oder Richtigkeit. Es wird keine Haftung übernommen für Schäden durch die Verwendung von Informationen aus diesem Online-Angebot oder durch das Fehlen von Informationen. Dies gilt auch für Inhalte Dritter, die über dieses Angebot zugänglich sind.

SOCIETE DE SECOURS MUTUELS DES SUISSES A LONDRES

On the occasion of the Annual General Meeting at the beginning of April, Mr. A. L. Gandon who has already completed twenty years in office as President of the Society, was presented by the members with a wallet as a token of appreciation of his leadership.

At the same time, Mr. A. Martin was elected Honorary Member after fifty years of membership during much of which time he held office of Vice-President of the Society.

E.A.N.



ANOTHER DEPARTURE

On 11th November 1966, we had pleasure in announcing that Dr. H. B. Knuchel had been elected Chairman of the Swiss Economic Council in succession to Mr. J. P. Christen. Little did we think then that he would return to Switzerland, too, very soon. That moment has now come, and Dr. and Mrs. Knuchel are leaving their hospitable home at Bowdon in Cheshire for the Bodenackerstrasse at Bottmingen, Baselland, because he has been entrusted with important work with his company in Basle.

Hans Benedikt Knuchel was born in Basle on 28th November 1922, citizen of Basle and Baetterkinden (Berne). His father was Editor of the "Basler Nachrichten", and Dr. Knuchel had his schooling at Binningen (Baselland) and at the *Humanistisches Gymnasium* in Basle. He studied law at the Universities of Geneva and Basle where he graduated in 1946. He then went to Edinburgh for some post-graduate studies in economics and subsequently held various posts in Germany, France and U.S.A. In 1951, he joined the chemical firm of J. R. Geigy, S.A., in Basle and was transferred to Geigy in Manchester two years later, first as Assistant Company Secretary of Geigy (Holdings) Ltd., and in 1959 as Secretary and Director of various subsidiary firms. In 1962, he became a Director of Geigy (Holdings) Ltd., and since

July 1965, he has been Deputy Managing Director of Geigy (U.K.) Ltd.

Dr. Knuchel has taken a keen interest in the Swiss Colony in Manchester, and he was President of the Manchester Club from 1959 to 1961. In 1964, he was elected delegate to the Commission of the Swiss Abroad, representing Great Britain North.

In 1952, Dr. Knuchel married Miss Denise Schindler from Neuchâtel, and they have two children, François born in 1953 and Catherine born in 1956.

Dr. Knuchel has been a member of the Swiss Economic Council since 1959 and on its Committee since 1961. On 13th October 1966, he was elected President, an office he has held with success, and if the *Institute for Swiss Trade Promotion*, whose establishment at the Swiss Centre in London was announced in our issue of 8th March, has become a reality, it is partly due to Dr. Knuchel's keen and enthusiastic support of the idea.

It was in 1953 that the Knuchels came to this country, and in the 15 years of residing here they have made many friends, and long will be remembered their friendliness and ever-ready support of all Swiss activities and not last their warming and cheering sense of humour, of veritable Basle brand — and that, from a genuine *Landschäftler* is an unadulterated compliment!

Good luck to you both and your family, and if ever you pay a visit to this country of which you have grown so fond, we shall be very pleased to see you. MM

PERSONAL

We wish to congratulate Mr. H. H. Baumann, of 22, St. Catherine's Court, Bedford Park, W.4, on the arrival of a second great-grand daughter. Best wishes!

* * *

It is with deep regret that we announce the death of Mr. Elmer Leopold Baumann, of 12, Glynde Avenue, Goring-by-Sea, Sussex. He died peacefully at the Southlands Hospital, and the Funeral Service took place at the Methodist Church on 11th April, followed by Cremation at Worthing Crematorium.

We express our sincere sympathy to his wife, Mrs. Mabel Baumann (*née* Woodcock), to their son Denis and daughters Margaret and Mary in their sad bereavement.

IN MEMORIAM — 22nd APRIL 1967

LEHNER Robert, F.H.C.I., F.C.F.A. St. Gall 1892. Zurich. Goring-by-Sea. In special remembrance of his great sincerity, gay and happy personality. (Deeply missed: Tonée.

READING OF FRENCH-SWISS AND FRENCH POETRY AND PROSE Commendable Co-operation

On Tuesday, 14th May, at 8 p.m., the Anglo-Swiss Society and the London Group of the Nouvelle Société Helvétique jointly present a Reading of French-Swiss and French Poetry and Prose in the original version. This is a splendid opportunity to hear some of the rich literature of the French language, especially since the reading will be given by the well-known Swiss actor and broadcaster JEAN BER. The *Soirée* will be held in the pleasant Drawing Room at 4, St. James's Square, S.W.1.

Admission is by programme at 5/- each, obtainable in advance from the Secretary, Anglo-Swiss Society, 77 Gloucester Place, W.1. (Please enclose stamped addressed envelope.)