

**Zeitschrift:** The Swiss observer : the journal of the Federation of Swiss Societies in the UK  
**Herausgeber:** Federation of Swiss Societies in the United Kingdom  
**Band:** - (1968)  
**Heft:** 1560  
  
**Artikel:** Toys from the 19th century  
**Autor:** [s.n.]  
**DOI:** <https://doi.org/10.5169/seals-696298>

### **Nutzungsbedingungen**

Die ETH-Bibliothek ist die Anbieterin der digitalisierten Zeitschriften auf E-Periodica. Sie besitzt keine Urheberrechte an den Zeitschriften und ist nicht verantwortlich für deren Inhalte. Die Rechte liegen in der Regel bei den Herausgebern beziehungsweise den externen Rechteinhabern. Das Veröffentlichen von Bildern in Print- und Online-Publikationen sowie auf Social Media-Kanälen oder Webseiten ist nur mit vorheriger Genehmigung der Rechteinhaber erlaubt. [Mehr erfahren](#)

### **Conditions d'utilisation**

L'ETH Library est le fournisseur des revues numérisées. Elle ne détient aucun droit d'auteur sur les revues et n'est pas responsable de leur contenu. En règle générale, les droits sont détenus par les éditeurs ou les détenteurs de droits externes. La reproduction d'images dans des publications imprimées ou en ligne ainsi que sur des canaux de médias sociaux ou des sites web n'est autorisée qu'avec l'accord préalable des détenteurs des droits. [En savoir plus](#)

### **Terms of use**

The ETH Library is the provider of the digitised journals. It does not own any copyrights to the journals and is not responsible for their content. The rights usually lie with the publishers or the external rights holders. Publishing images in print and online publications, as well as on social media channels or websites, is only permitted with the prior consent of the rights holders. [Find out more](#)

**Download PDF:** 12.08.2025

**ETH-Bibliothek Zürich, E-Periodica, <https://www.e-periodica.ch>**

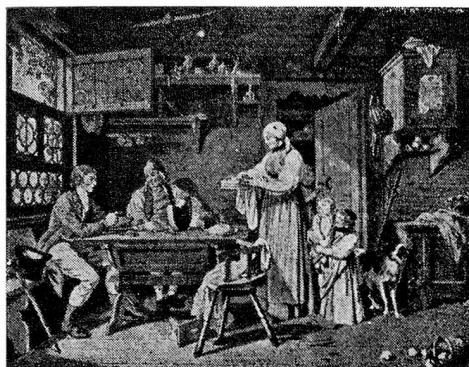
The Institute for Swiss Trade Promotion  
Swiss Centre  
London W.1

British Brown Boveri Ltd.  
Glen House, Stag Place  
London S.W.1

# «HOME» for SWISS LIVING ABROAD and Swiss British Centre at DÜRRENAESCH

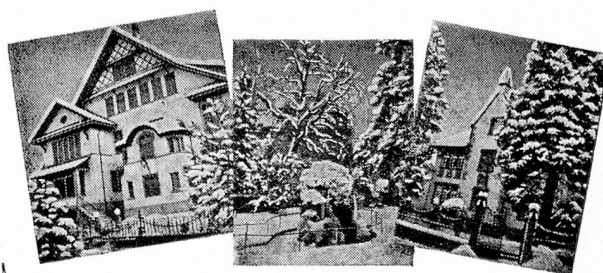
«The little village» within the village

Aargau (Switzerland)



Sigmund Freudenberg, Bern, 1745—1801 Hospitality

The Home is open  
all the year round



Please write to the Secretary of the Home for Swiss Living Abroad at Dürrenäsch (Aargau/Switzerland) and ask for application forms with conditions of admission, or contact your Consulate or your Swiss Club

## HOME-PROGRAMM

1. An educational year in the HOME (Students' Centre)
2. The HOME for Swiss returning home and the emigration
3. The HOME for a holiday in the country — at any season



## TOYS FROM THE 19th CENTURY

An interesting exhibition of toys from the 19th century has been running at Schloss Schadau near Thun, a building also dating from the same period. There is precious little reason for being proud of today's artificial toys when one remembers that already the old Egyptians had wooden dolls with movable limbs about 2000 B.C. Most peoples of the distant past and most primitive cultures, used dolls in play and ceremony. Greek girls played with clay dolls whose movable arms were fixed to the bodies with string (500 B.C.). The Kaethe-Kruse-Dolls which were made as near to nature as possible in soft material, became world-famous. Their creator, the actress of the same name was born in Breslau in 1883, and the beautifully modelled dolls began to appear in her workshop at Koesen in 1902.

A few collectors have organised the exhibition and have given some fascinating 19th-century toys on loan: *Biedermeier* dolls, biscuit dolls, porcelain dolls, dolls houses from Vienna, Naples, from the Erzgebirge. In our plastic-toy epoch all we can do is to be amazed, or perhaps we can learn something?

(By courtesy of "Schweizerisches Kaufmännisches Zentralblatt".)

## THE FOLKLORE MUSEUM OF APPENZEL

The popular *Heimatmuseum* located in the Appenzell Council Hall was recently expanded. One of its most interesting exhibitions is a completely equipped *Sen-nenstube*, the interior of a herdsman's hut with its cheese-making vessels and tools. Open daily from 1.30 to 4.30 p.m., the Museum will soon acquire additional exhibitions on Appenzeller lore and a stamp collection. A very valuable addition will be an embroidery collection which has hitherto been housed at the Appenzell "Kollegium", including precious Appenzeller embroidery as well as examples of ancient and modern embroidery from 29 countries throughout the world. [S.N.T.O.]

## SWITZERLAND — WORLD CHOICE FOR HOLIDAYS

Alex Faulkner reported in the Daily Telegraph on 18th November from New York:

"A big vote of confidence in Switzerland as the ideal place for a holiday emerges from a recent Gallup poll. A survey carried out in seven countries showed that tiny Switzerland would be overrun with tourists from the USA and many other nations, if travel wishes could be translated in actuality. In the United States it was found that 50% are very interested in visiting Switzerland. In Britain this figure is even higher i.e. 55%." [S.N.T.O.]