

**Zeitschrift:** The Swiss observer : the journal of the Federation of Swiss Societies in the UK  
**Herausgeber:** Federation of Swiss Societies in the United Kingdom  
**Band:** - (1964)  
**Heft:** 1451

## Werbung

### Nutzungsbedingungen

Die ETH-Bibliothek ist die Anbieterin der digitalisierten Zeitschriften auf E-Periodica. Sie besitzt keine Urheberrechte an den Zeitschriften und ist nicht verantwortlich für deren Inhalte. Die Rechte liegen in der Regel bei den Herausgebern beziehungsweise den externen Rechteinhabern. Das Veröffentlichen von Bildern in Print- und Online-Publikationen sowie auf Social Media-Kanälen oder Webseiten ist nur mit vorheriger Genehmigung der Rechteinhaber erlaubt. [Mehr erfahren](#)

### Conditions d'utilisation

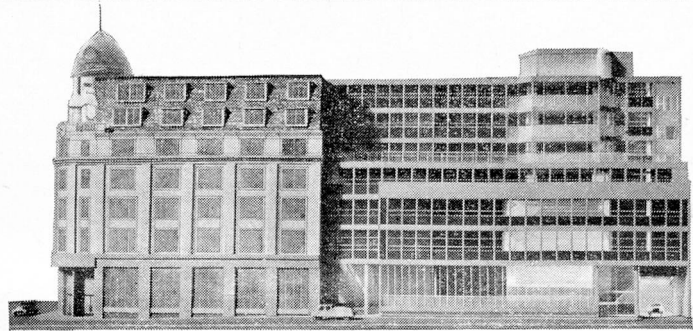
L'ETH Library est le fournisseur des revues numérisées. Elle ne détient aucun droit d'auteur sur les revues et n'est pas responsable de leur contenu. En règle générale, les droits sont détenus par les éditeurs ou les détenteurs de droits externes. La reproduction d'images dans des publications imprimées ou en ligne ainsi que sur des canaux de médias sociaux ou des sites web n'est autorisée qu'avec l'accord préalable des détenteurs des droits. [En savoir plus](#)

### Terms of use

The ETH Library is the provider of the digitised journals. It does not own any copyrights to the journals and is not responsible for their content. The rights usually lie with the publishers or the external rights holders. Publishing images in print and online publications, as well as on social media channels or websites, is only permitted with the prior consent of the rights holders. [Find out more](#)

**Download PDF:** 22.01.2026

**ETH-Bibliothek Zürich, E-Periodica, <https://www.e-periodica.ch>**



# SWISS BANK CORPORATION

(A company limited by shares incorporated in Switzerland)

OFFICES  
THROUGHOUT  
SWITZERLAND  
& IN NEW YORK

AFFILIATES  
IN MONTREAL  
& CASABLANCA

REPRESENTATIVES  
IN CENTRAL AND  
SOUTH AMERICA

SOCIÉTÉ DE BANQUE SUISSE  
SCHWEIZERISCHER BANKVEREIN  
SOCIETÀ DI BANCA SVIZZERA

*Principal London Office*  
99 GRESHAM STREET, LONDON E.C.2  
(During rebuilding: P.O. Box No. 114, 40 Coleman  
Street, London E.C.2)  
Telephone: Monarch 4000

*West End Branch*  
18 REGENT STREET, S.W.1  
(Savings Accounts — currently 2½% p.a. — available)  
Telephone: Whitehall 8083

A FULL SWISS BANKING SERVICE AT YOUR DISPOSAL IN LONDON



## fingerlight COMPACROW can double your storage capacity, or halve your storage area!

Acrow get the aisles mobilized to save you time, space and money with COMPACROW. Fixed access aisles are eliminated and this immediately doubles your storage area capacity. The Compacrow system consists of precision built and dynamically balanced storage units, mounted on floor rails and moving under fingerlight pressure to make an aisle where and when it's needed. The system will handle anything from box files to engine parts in half the time and half the space. Put Compacrow on your payroll as a big money saver when time and space come expensive.

### SEE HOW COMPACROW SAVES EXPENSIVE SPACE

- Static storage, with fixed access aisles wastes space. Mobile Compacrow puts the aisle where it's needed — gives plenty of light and room — cuts costs.
- 1** When storage space is limited COMPACROW will increase your capacity by 100%.
  - 2** When you are short of space COMPACROW can release up to 50% of your storage area for other purposes.
  - 3** When you are planning to build new storage areas, COMPACROW will cut the costs by halving the space required.

**ACROW (ENGINEERS) LTD Acrowrack Division**  
South Wharf London W2 AMBassador 3456

BRANCHES IN: BELFAST  
BIRMINGHAM · BRISTOL  
CHESTERFIELD · GLASGOW  
LEEDS · LIVERPOOL  
MANCHESTER · NEWCASTLE  
PENARTH · SAFFRON WALDEN,  
SOUTHAMPTON

