

**Zeitschrift:** The Swiss observer : the journal of the Federation of Swiss Societies in the UK  
**Herausgeber:** Federation of Swiss Societies in the United Kingdom  
**Band:** - (1962)  
**Heft:** 1404  
  
**Rubrik:** London Swiss Philatelic Society

### **Nutzungsbedingungen**

Die ETH-Bibliothek ist die Anbieterin der digitalisierten Zeitschriften auf E-Periodica. Sie besitzt keine Urheberrechte an den Zeitschriften und ist nicht verantwortlich für deren Inhalte. Die Rechte liegen in der Regel bei den Herausgebern beziehungsweise den externen Rechteinhabern. Das Veröffentlichen von Bildern in Print- und Online-Publikationen sowie auf Social Media-Kanälen oder Webseiten ist nur mit vorheriger Genehmigung der Rechteinhaber erlaubt. [Mehr erfahren](#)

### **Conditions d'utilisation**

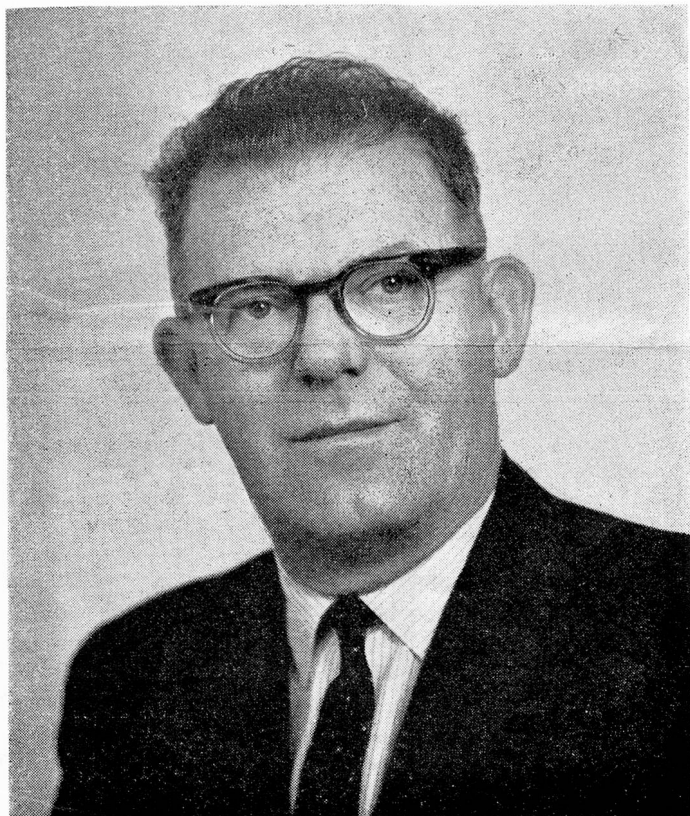
L'ETH Library est le fournisseur des revues numérisées. Elle ne détient aucun droit d'auteur sur les revues et n'est pas responsable de leur contenu. En règle générale, les droits sont détenus par les éditeurs ou les détenteurs de droits externes. La reproduction d'images dans des publications imprimées ou en ligne ainsi que sur des canaux de médias sociaux ou des sites web n'est autorisée qu'avec l'accord préalable des détenteurs des droits. [En savoir plus](#)

### **Terms of use**

The ETH Library is the provider of the digitised journals. It does not own any copyrights to the journals and is not responsible for their content. The rights usually lie with the publishers or the external rights holders. Publishing images in print and online publications, as well as on social media channels or websites, is only permitted with the prior consent of the rights holders. [Find out more](#)

**Download PDF:** 13.08.2025

**ETH-Bibliothek Zürich, E-Periodica, <https://www.e-periodica.ch>**



W. BURREN, President

## LONDON SWISS PHILATELIC SOCIETY

At the Annual General Meeting of the Society, held at Swiss House, Fitzroy Square, W.1, on 2nd February 1962. Mr. W. Burren (formerly Vice-President) was elected as President in the place of Mr. F. Streit (who has resigned from that office after being President no less than eighteen times since the founding of the Society in 1943). Mr. E. M. Huber was elected Vice-President. As it was felt by some members that Meetings had been starting too late, it was decided that future Meetings should be called for 7 o'clock and business to commence at 7.15 p.m. sharp, on the last Friday of each month. On 17th February the Annual Luncheon took place at the Glendower Hotel, South Kensington, with Monsieur G. Berlemont (the distinguished philatelist who has already displayed six parts of his very extensive collection of "France" at the Society's Meetings) and Madame Berlemont as guests. As usual this was a very successful and enjoyable function, and during the proceedings a cigarette lighter was presented by the new President to Mr. Streit, as a token of the regard of members and in appreciation of the work he has put in for the Society. The customary tombola was held for the benefit of the Society's funds, and an auction of stamps was held on behalf of charity. It was announced by Mr. Burren that since 1943 the "London Swiss" had been able to contribute more than £287 to the Swiss Benevolent Society from money raised at these Annual Luncheons. Mrs. Schmid was called upon to present the Challenge Cup to the 1961 winner — Mr. W. R. Thompson — and a replica to the 1960 winner — Mr. H. C. Gay.



Illustration shows part of Rolstore installation at Northern Assurance Co's Record Office, at Moorgate, London

**Up to 50% more  
profitable space  
by putting your  
Storage on Wheels**

— YES, that's what  
**ROLSTORE Mobile Unit Storage**  
can give you, by reducing wasted gangway  
space to the barest minimum while giving  
instant access to every bin or rack.

**POST THIS COUPON NOW!**

**SEND ME FULLY DESCRIPTIVE LITERATURE  
ON ROLSTORE MOBILE UNIT STORAGE.**

Name .....

Company .....

Address .....

**ACROW ROLSTORE  
DIVISION**

SOUTH WHARF, LONDON, W.2.

AMBassador 3456 (20 lines)