

Zeitschrift: The Swiss observer : the journal of the Federation of Swiss Societies in the UK
Herausgeber: Federation of Swiss Societies in the United Kingdom
Band: - (1960)
Heft: 1355

Artikel: Swiss Industries Fair Basle, 1960
Autor: [s.n.]
DOI: <https://doi.org/10.5169/seals-686763>

Nutzungsbedingungen

Die ETH-Bibliothek ist die Anbieterin der digitalisierten Zeitschriften auf E-Periodica. Sie besitzt keine Urheberrechte an den Zeitschriften und ist nicht verantwortlich für deren Inhalte. Die Rechte liegen in der Regel bei den Herausgebern beziehungsweise den externen Rechteinhabern. Das Veröffentlichen von Bildern in Print- und Online-Publikationen sowie auf Social Media-Kanälen oder Webseiten ist nur mit vorheriger Genehmigung der Rechteinhaber erlaubt. [Mehr erfahren](#)

Conditions d'utilisation

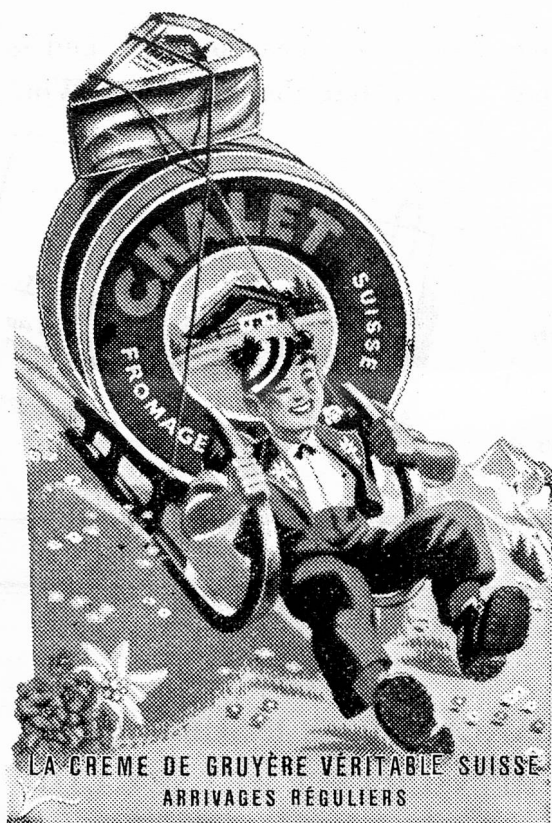
L'ETH Library est le fournisseur des revues numérisées. Elle ne détient aucun droit d'auteur sur les revues et n'est pas responsable de leur contenu. En règle générale, les droits sont détenus par les éditeurs ou les détenteurs de droits externes. La reproduction d'images dans des publications imprimées ou en ligne ainsi que sur des canaux de médias sociaux ou des sites web n'est autorisée qu'avec l'accord préalable des détenteurs des droits. [En savoir plus](#)

Terms of use

The ETH Library is the provider of the digitised journals. It does not own any copyrights to the journals and is not responsible for their content. The rights usually lie with the publishers or the external rights holders. Publishing images in print and online publications, as well as on social media channels or websites, is only permitted with the prior consent of the rights holders. [Find out more](#)

Download PDF: 13.08.2025

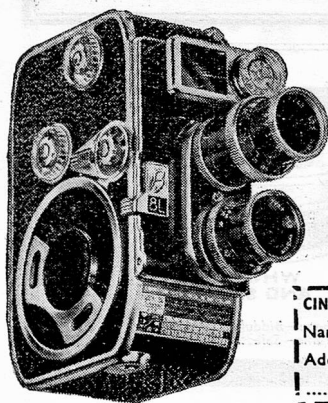
ETH-Bibliothek Zürich, E-Periodica, <https://www.e-periodica.ch>



Swiss Chalet Cheese is a real treat for Cheese lovers

Pictures like this that can't be posed—the living, breathing, moving happenings that make the best pictures of all can only be taken with a cine camera. And the beauty of it is that cine films are far from expensive. With this Bolex B8L you can take 24 or more good length action sequences for just over £1, including processing charge. At 10½d. a shot this compares very favourably with ordinary still photography.

See the Bolex B8L at any good photo shop. Note its precision construction—so vital in a cine camera. That's because it is made in one of the great watch-making centres of Switzerland.



you get
it all



CINE
CAMERA

with a



BOLEX B8L

The Swiss Precision cine camera

Send for brochure

CINEX LTD., Bolex Hse., Southgate, N.14.

Name

Address



SWISS INDUSTRIES FAIR BASLE, 1960

The Swiss Industries Fair, Switzerland's annual display of industry in Basle, will take place in the year 1960 from the 23rd April to the 3rd May.

The display of products by some 2,300 exhibitors comprises the following groups: arts and crafts and ceramics; office and business requisites; paper, printing, publicity material; textiles, clothing, fashion goods; footwear and leather goods; watch fair; furniture and domestic accessories; sport, games and toys, music; chemical products, hairdressers' accessories, cosmetic products; domestic appliances; electricity; gas, water, heating; machinery; industrial goods and accessories; transport; building materials and accessories; foodstuffs.

Visitors from foreign countries will find it well worth their while to devote attention to the displays in the groups covering watches, textiles (with the special sections "Création", "Madame-Monsieur", and "Knitwear Centre"), electricity, machinery and industrial accessories. Within the framework of the machinery industry machine-tools for the processing of metals will be particularly well represented at the 1960 Fair.

Fuller particulars, prospectuses, identity cards and copies of the catalogue are obtainable from Swiss Embassies, Legations, Consulates and Chambers of Commerce, as well as from the agencies of the Swiss Office for Development of Trade and the Swiss National Tourist Office.

VARIOUS.

Statistical information obtained from the International Labour Office in Geneva reveals that since 1953 the price of food in Switzerland has increased less than in seven other West European countries, the USA and Canada. Apart from price development the purchasing power of the labourer and clerical worker's salary is particularly informative. To obtain these statistics the non-professional building worker category was chosen because the hourly pay for this group of worker was far easier to compare with those from other West European countries, more advantageous or at least as good. As far as quantities are concerned it is only in Sweden that the purchasing power of the workers salary is higher than that of a Swiss worker.

* * *

Berne, not only the proud possessor of the Jungfrau railway which is the highest railway in Europe, can boast that its capital town own the shortest railway in Switzerland. It is the tiny Marzili railway operating between the Federal terrace and the Marzili district situated on the banks of the river Aare. Four conductors are employed and two coaches, completely independent of steam or electricity, are perpetually travelling between the two stations. The train is equipped with a "water motor", and receives a store of water from the overhead station the weight of which is just sufficient to cause the train at the other end to travel in an upwards direction on a steel cable and allow itself to proceed in a downward direction.