

Zeitschrift: The Swiss observer : the journal of the Federation of Swiss Societies in the UK
Herausgeber: Federation of Swiss Societies in the United Kingdom
Band: - (1959)
Heft: 1337

Artikel: Swissair's Operations in 1958
Autor: [s.n.]
DOI: <https://doi.org/10.5169/seals-687139>

Nutzungsbedingungen

Die ETH-Bibliothek ist die Anbieterin der digitalisierten Zeitschriften auf E-Periodica. Sie besitzt keine Urheberrechte an den Zeitschriften und ist nicht verantwortlich für deren Inhalte. Die Rechte liegen in der Regel bei den Herausgebern beziehungsweise den externen Rechteinhabern. Das Veröffentlichen von Bildern in Print- und Online-Publikationen sowie auf Social Media-Kanälen oder Webseiten ist nur mit vorheriger Genehmigung der Rechteinhaber erlaubt. [Mehr erfahren](#)

Conditions d'utilisation

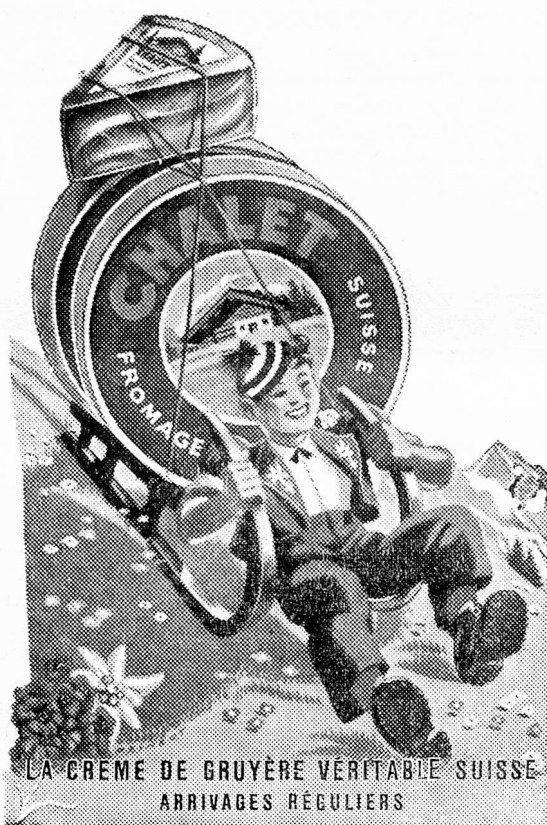
L'ETH Library est le fournisseur des revues numérisées. Elle ne détient aucun droit d'auteur sur les revues et n'est pas responsable de leur contenu. En règle générale, les droits sont détenus par les éditeurs ou les détenteurs de droits externes. La reproduction d'images dans des publications imprimées ou en ligne ainsi que sur des canaux de médias sociaux ou des sites web n'est autorisée qu'avec l'accord préalable des détenteurs des droits. [En savoir plus](#)

Terms of use

The ETH Library is the provider of the digitised journals. It does not own any copyrights to the journals and is not responsible for their content. The rights usually lie with the publishers or the external rights holders. Publishing images in print and online publications, as well as on social media channels or websites, is only permitted with the prior consent of the rights holders. [Find out more](#)

Download PDF: 13.08.2025

ETH-Bibliothek Zürich, E-Periodica, <https://www.e-periodica.ch>



Swiss Chalet Cheese is a real treat for Cheese lovers

FREIGHT EXPRESS LIMITED

SHIPOWNERS, BROKERS,
CHARTERING AGENTS,
FORWARDING, WHARFAGE

11/12, FENCHURCH STREET, LONDON, E.C.3

Phone: MANsion House 7561/7
Telegrams: "Telcoport, Telex, London

Express Wharf, 38, Westferry Road, London, E.14

Phone EASt 2422/3

CITY SWISS CLUB

A Card Meeting will be held on **Tuesday, March 17th, 1959**. As no circulars will be sent out for this meeting will members kindly note the date and advise the Dorchester Hotel of their intention to be present by the day previous to the Meeting. (This can be done by telephoning Miss Martin at the Dorchester Hotel, Telephone: MAYfair 8888).

Th. von SPEYR,
Hon. Secretary.

SWISSAIR'S OPERATIONS IN 1958.

Swissair's results for 1958 show a continued expansion in the volume of traffic. Capacity produced increased by 21 per cent over 1957 and totalled 204,730,386 tonne-kilometres. This was more than the total capacity offered in the years 1947 to 1953 inclusive.

Revenue tonne-kilometres performed amounted to 123,091,544 or 18 per cent more than in 1957. Of this, passenger transport accounted for 76,303,934 tkm (15 per cent up on 1957), air freight for 20,919,499 tkm (32 per cent up), baggage for 19,545,161 tkm (16 per cent up) and mail for 6,322,950 tkm (16 per cent up). Average load factor on the scheduled services was 60.1 per cent (1957: 61.6 per cent).

The number of staff employed rose by 15 per cent to 5,429.

In the course of 1958 Swissair's fleet was augmented by one DC-7C, one DC-6B and one DC-6A "Cargoliner". Following the sale in October of one of the company's three DC-4s, Swissair's fleet comprised at the end of 1958 the following 34 units:

5 Douglas DC-7Cs, 7 Douglas DC-6Bs, 1 Douglas DC-6A freighter, 11 Convair Metropolitans, 2 Douglas DC-4s and 8 Douglas DC-3s.

In 83,719 flying hours the fleet covered during 1958 33,075,651 kilometres, compared with 29,133,419 km in 1957.

Utilisation of the aircraft was high: on average the DC-7Cs were airborne for 11.06 hours per day. Average flying hours for the Metropolitans were 7.07 per day; this can be considered satisfactory for a type of aircraft used for short sector traffic in Europe with frequent stops.

The Management has described the year's results as very satisfactory.

Statistics.

	1958	1957
Kilometres flown	33,075,651	29,133,419
Tonne-kilometres produced and offered	204,730,386	169,176,531
Tonne-kilometres utilised	123,091,544	104,235,336
of which: Passenger-tkm	76,303,934	66,098,436
Baggage-tkm	19,545,161	16,883,093
Freight-tkm	20,919,499	15,812,244
Mail-tkm	6,322,950	5,441,563
Load factor on the scheduled services	60.1%	61.6%

FIRST FLIGHT OF CONVAIR 880 JETLINER.

The Convair 880 jet liner, of which Swissair and Scandinavian Airlines System have as first European airlines ordered five units, made its successful first flight at San Diego, California, on 27th January. After one hour fifteen minutes in the air, the plane landed at North Island Naval Air Station. The test pilot, Don Germeraad, said the aircraft showed wonderful handling and excellent performance with a very good rate of climb. Onlookers who witnessed the first take-off were surprised at the effectiveness of the new type noise-suppressors fitted.



Shoes by



THE LONDON SHOE CO. LTD. of Switzerland
116/7 New Bond St. W.1: 260 Regent St. W.1: 21/22 Sloane St. S.W.1