

**Zeitschrift:** The Swiss observer : the journal of the Federation of Swiss Societies in the UK

**Herausgeber:** Federation of Swiss Societies in the United Kingdom

**Band:** - (1958)

**Heft:** 1324

**Rubrik:** Welfare office for Swiss girls

### **Nutzungsbedingungen**

Die ETH-Bibliothek ist die Anbieterin der digitalisierten Zeitschriften auf E-Periodica. Sie besitzt keine Urheberrechte an den Zeitschriften und ist nicht verantwortlich für deren Inhalte. Die Rechte liegen in der Regel bei den Herausgebern beziehungsweise den externen Rechteinhabern. Das Veröffentlichen von Bildern in Print- und Online-Publikationen sowie auf Social Media-Kanälen oder Webseiten ist nur mit vorheriger Genehmigung der Rechteinhaber erlaubt. [Mehr erfahren](#)

### **Conditions d'utilisation**

L'ETH Library est le fournisseur des revues numérisées. Elle ne détient aucun droit d'auteur sur les revues et n'est pas responsable de leur contenu. En règle générale, les droits sont détenus par les éditeurs ou les détenteurs de droits externes. La reproduction d'images dans des publications imprimées ou en ligne ainsi que sur des canaux de médias sociaux ou des sites web n'est autorisée qu'avec l'accord préalable des détenteurs des droits. [En savoir plus](#)

### **Terms of use**

The ETH Library is the provider of the digitised journals. It does not own any copyrights to the journals and is not responsible for their content. The rights usually lie with the publishers or the external rights holders. Publishing images in print and online publications, as well as on social media channels or websites, is only permitted with the prior consent of the rights holders. [Find out more](#)

**Download PDF:** 02.04.2026

**ETH-Bibliothek Zürich, E-Periodica, <https://www.e-periodica.ch>**

**SWISS CHURCH.**

SERVICES EVERY SUNDAY at 11 a.m. and 6.30 p.m.

IN FRENCH: At the Eglise Suisse, 79, Endell Street, Shaftesbury Avenue, W.C.2, except on the fourth Sunday in the month: evening service at 6.30 p.m. in the French Church, 9 Soho Square, W.1.

Pasteur C. Reverdin, Telephone: FIN. 5281.

IN GERMAN: At St. Mary Woolnoth Church, Lombard Street, Bank, E.C.3. (During summer months evening services start at 7 p.m.)

Pfarrer H. Spörri, Telephone: MOU 6018.

**SWISS CATHOLICS IN LONDON.**

CHURCH and SERVICES: St. ANN's Catholic Church, Abbey Orchard Street (off Victoria St.), S.W.1.

SUNDAYS: Holy Masses at 8, 9, and 11 o'clock.

HOLIDAYS OF OBLIGATION: Holy Masses at 7.30, 9 a.m. and 5.45 p.m.

WEEKDAYS: Holy Mass at 7.30 a.m.

CONFESSIONS in German, Italian and French: EVERY SATURDAY:

a) at St. Ann's from 11.30 a.m. — 12.45 p.m.

b) at Westminster Cathedral: from 5-6.30 p.m.

c) at any other time by appointment.

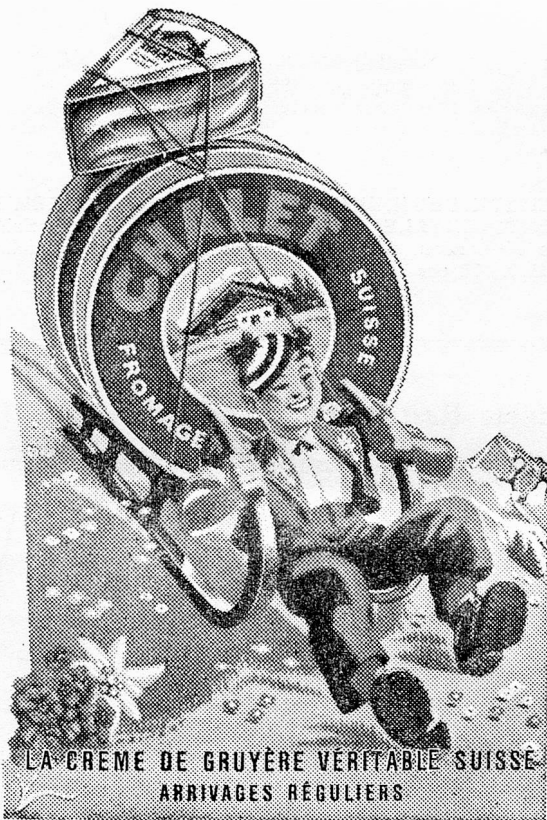
CHAPLAIN: Rev. A. Lanfranchi, St. Ann's Church, Abbey Orchard Street, S.W.1. Tel: ABBey 2895.

**WELFARE OFFICE FOR SWISS GIRLS.**

MISS MADELEINE BEERLI.

11, Belsize Grove, N.W.3. (Tel. PRI 4260.)

Office hours: 2 to 5 p.m. Tuesday, Wednesday, Thursday and Saturday. Also by appointment.



Swiss Chalet Cheese is a real treat for Cheese lovers

**FORTHCOMING EVENTS.**

Every Thursday from 6 to 7.30 p.m. — Discussion Circle in English — Young men specially invited. Tea from 6 to 6.15 p.m. Swiss Y.M.C.A., London Central Y.M.C.A. Building, Great Russell Street, W.C.1.

Every Saturday and Sunday from 8 p.m. to 11 o'clock — "Schweizerbund" (Swiss Club) — Dance — at 74, Charlotte Street, W.1. Open — fully licensed — 3 p.m. to 11 p.m.

Every Sunday, from 7 to 10.30 p.m. — The Alpenrosen Club — Socials — at Westminster Cathedral School, 48, Great Peter Street, S.W.1.

Every Thursday, from 8-10.30 p.m. — Unione Ticinese — Corale — at the "Schweizerbund" (Swiss Club), 74, Charlotte Street, W.1.

Société de Secours Mutuels. Next meeting Wednesday, October 1st, 1958.

Sunday, July 27th 1958 — Swiss Club Manchester — National Day Celebration — Excursion by motor-coach outward via Liverpool, returning via Chester, to the Wirral Peninsula. Leaving Piccadilly bombed site at 10.30 a.m. Picnic lunch taken (bring own provisions) at the Derby Swimming Pool and Sand Hills Birkenhead. High tea and Meeting at the Red Room Restaurant, Arrowe Park, Birkenhead, at 6.15 p.m. Due back in Manchester 10.30 p.m.

Thursday, July 31st 1958 at 7.30 p.m. (Ladies meet from 6 p.m.) — Swiss Club Manchester — Ordinary Monthly Meeting — at the Midland Hotel, Manchester.

Friday, August 1st 1958, at 6.45 p.m. to 1 a.m. (Doors open at 6 p.m.) — Swiss National Day Celebration — at Wimbledon Town Hall, Wimbledon. (See advertisement.)

August, 1958, City Swiss Club — No Meeting.

August 1958 — Swiss Rifle Association — No Shooting.

August 1958, London Swiss Philatelic Society — No Meeting.

August 1958. — Swiss Mercantile Society. No Meeting.

August 1st 1958 from 8 to 12 p.m. "Schweizerbund" (Swiss Club) — Carnival Dance (Swiss National Day) at 74, Charlotte Street, W.1. (Tickets 5/- or at door 6/-).

Sunday, August 3rd, 1958 at 11 a.m. — Eglise Suisse — Joint Protestant Service, in French and German, at 79, Endell Street, W.C.2, and at 7 p.m. at St. Mary Woolnoth, Lombard Street, E.C.2. (Bank Station).

Sunday August 3rd, 1958, at 11 a.m. — Swiss Catholics — Special Service for the Swiss National Day Celebration. Solemn Mass and Sermon in English and German.

Sunday, August 24th 1958 — Swiss Club Manchester — Whole day ramble "The Goyt Valley to Buxton". Take the 9.45 a.m. train from London Road Station. Book cheap day excursion to Buxton but leave the train at Whaley Bridge at 10.25 a.m.

Thursday, August 28th 1958 at 7.30 p.m. (Ladies meet from 6 p.m.) — Swiss Club Manchester — Ordinary Monthly Meeting — at the Midland Hotel, Manchester.

Saturday and Sunday, August 30th and 31st — Nouvelle Société Helvétique — "Auslandschweizertagung" at Baden, Switzerland.

**THE FLORAL HOUSE**

ELSIE FINGER (SWISS)

237 JUNCTION ROAD, TUFNELL PARK, LONDON, N.19

Phone: ARChway 3711 (NORth 5942 out of business hours)

**FLOWERS FOR ALL OCCASIONS**

As a member of Interflora, we can arrange for Flowers to be delivered anytime, anywhere in the World.