

Zeitschrift: The Swiss observer : the journal of the Federation of Swiss Societies in the UK

Herausgeber: Federation of Swiss Societies in the United Kingdom

Band: - (1956)

Heft: 1282

Rubrik: City Swiss Club

Nutzungsbedingungen

Die ETH-Bibliothek ist die Anbieterin der digitalisierten Zeitschriften auf E-Periodica. Sie besitzt keine Urheberrechte an den Zeitschriften und ist nicht verantwortlich für deren Inhalte. Die Rechte liegen in der Regel bei den Herausgebern beziehungsweise den externen Rechteinhabern. Das Veröffentlichen von Bildern in Print- und Online-Publikationen sowie auf Social Media-Kanälen oder Webseiten ist nur mit vorheriger Genehmigung der Rechteinhaber erlaubt. [Mehr erfahren](#)

Conditions d'utilisation

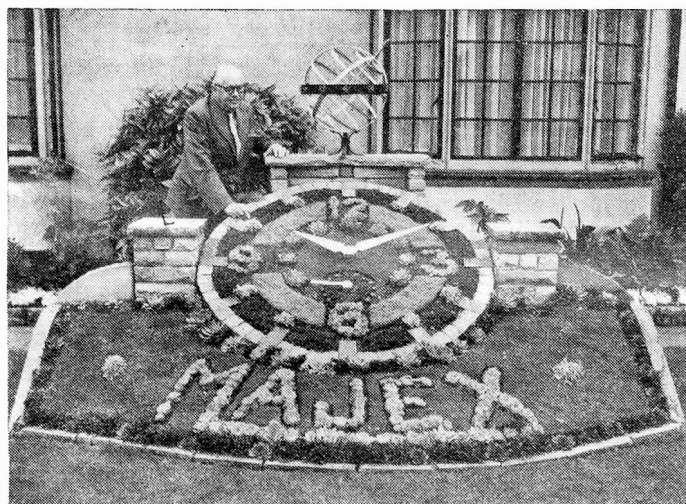
L'ETH Library est le fournisseur des revues numérisées. Elle ne détient aucun droit d'auteur sur les revues et n'est pas responsable de leur contenu. En règle générale, les droits sont détenus par les éditeurs ou les détenteurs de droits externes. La reproduction d'images dans des publications imprimées ou en ligne ainsi que sur des canaux de médias sociaux ou des sites web n'est autorisée qu'avec l'accord préalable des détenteurs des droits. [En savoir plus](#)

Terms of use

The ETH Library is the provider of the digitised journals. It does not own any copyrights to the journals and is not responsible for their content. The rights usually lie with the publishers or the external rights holders. Publishing images in print and online publications, as well as on social media channels or websites, is only permitted with the prior consent of the rights holders. [Find out more](#)

Download PDF: 04.12.2025

ETH-Bibliothek Zürich, E-Periodica, <https://www.e-periodica.ch>



AN INGENIOUS CLOCK.

Some three years ago there appeared an article in this paper under the above heading, acquainting our readers that Mr. René Marchand, of Messrs. Marchand & Jobin, Ltd., 100 Hatton Garden, London, E.C.3., had built in his front garden at Hayes Road, Bromley, a floral clock which bore the inscription "May it please Her Majesty", it being Coronation Year.

Mr. Marchand, being an enthusiastic gardener, has recently re-designed his novel and intriguing Majex floral chiming clock at his home in Bromley, which has proved quite an attraction to all passers by.

The clock, which is worked by electricity, now incorporates a second hand, and is still believed to be the only fully-chiming floral clock anywhere. Mr. Marchand has also created an Armillary Sphere, — as can be seen in the photograph — by the only remaining blacksmith in Bromley, same is fully authentic in design, and an object of keen interest to all viewers, as it is seldom that an Armillary Sphere can be seen outside of a Museum, and certainly not as an integral part of a Floral Clock design.

The entire clock is floral, with the exception of the bare outline or frame work. Amongst the many hundreds of beautiful tropical plants of various colours incorporated in its construction are Alternanthera, Echivera and Mesembrianthemum, to name only a few.

The mechanism and Westminster Chimes are independently operated by electrical means; we are told that it keeps perfect time, which is not surprising considering that Mr. R. Marchand is in the watch and clock trade.

CENTENARY BANQUET & BALL. CITY SWISS CLUB

Friday, November 16th, at the Dorchester Hotel,
Park Lane, W.1.

Amongst the highlights of the social events in the London Colony, this autumn, will be the celebration of the 100th anniversary of the City Swiss Club.

Events of this kind are of a rare occurrence, and so far only two Societies have attained centuries, namely the Société de Secours Mutuels des Suisses à Londres, founded in 1703, and the Swiss Club, Manchester, founded in 1850.

We are informed that preparations to celebrate this important anniversary with fitting manifestation are well in hand.

Important guests, both from Switzerland, and from our English friends will be invited on this occasion, and we understand that a "surprise entertainment" might be provided.

It is hoped that a great number of old and young members of the Club will attend this "birthday party", together with their friends.

Members of the City Swiss Club, will be shortly advised, and we invite them already now to reserve, Friday, November 16th, 1956.

**Kettners Restaurant has no music and is not
luxurious . . . but the Food and Wine are
superb.**

Roast Surrey
Capon,
Roast Aylesbury
Duckling
served every day



SHIPPING FORWARDING INSURANCE PACKING

ALLIED HOUSE :
SWISS SHIPPING Co. Ltd.,
RITTERGASSE 20,
BASLE.

COMPTON'S

LIMITED

12a & 13, WELL COURT,
BOW LANE, LONDON, E.C.4

SPECIAL SERVICES TO SWITZERLAND
by TRAIN FERRY (the ALL RAIL Route)
by RHINE CRAFT (the ALL WATER Route)

CONTINENTAL FREIGHT AGENTS TO THE BRITISH RAILWAYS

Tel.: CITY 4053

SEA LAND AIR RHINE

ALLIED HOUSE :
JOHN IM OBERSTEG & Co. Ltd.,
AESCHENGRABEN 24/28,
BASLE.

Cables : COMNAVIR