

**Zeitschrift:** The Swiss observer : the journal of the Federation of Swiss Societies in the UK

**Herausgeber:** Federation of Swiss Societies in the United Kingdom

**Band:** - (1955)

**Heft:** 1253

**Rubrik:** Editor's postbag

### **Nutzungsbedingungen**

Die ETH-Bibliothek ist die Anbieterin der digitalisierten Zeitschriften auf E-Periodica. Sie besitzt keine Urheberrechte an den Zeitschriften und ist nicht verantwortlich für deren Inhalte. Die Rechte liegen in der Regel bei den Herausgebern beziehungsweise den externen Rechteinhabern. Das Veröffentlichen von Bildern in Print- und Online-Publikationen sowie auf Social Media-Kanälen oder Webseiten ist nur mit vorheriger Genehmigung der Rechteinhaber erlaubt. [Mehr erfahren](#)

### **Conditions d'utilisation**

L'ETH Library est le fournisseur des revues numérisées. Elle ne détient aucun droit d'auteur sur les revues et n'est pas responsable de leur contenu. En règle générale, les droits sont détenus par les éditeurs ou les détenteurs de droits externes. La reproduction d'images dans des publications imprimées ou en ligne ainsi que sur des canaux de médias sociaux ou des sites web n'est autorisée qu'avec l'accord préalable des détenteurs des droits. [En savoir plus](#)

### **Terms of use**

The ETH Library is the provider of the digitised journals. It does not own any copyrights to the journals and is not responsible for their content. The rights usually lie with the publishers or the external rights holders. Publishing images in print and online publications, as well as on social media channels or websites, is only permitted with the prior consent of the rights holders. [Find out more](#)

**Download PDF:** 13.08.2025

**ETH-Bibliothek Zürich, E-Periodica, <https://www.e-periodica.ch>**

**EDITOR'S POSTBAG.**

June 15th, 1955.

The Editor,  
Swiss Observer,  
London.

Dear Sir,

May I on behalf of my Committee express our gratitude for the very kind and fair article about the Fête Suisse. We find that what you write always gives a true and friendly picture of what took place and I must add that I always re-read it before we plan the next Fête! This means of course that we shall once again endeavour to improve, taking into consideration your well meant remarks which, I am sure, are endorsed by everybody.

Speeches are ALWAYS too long. I did my best to be short so much so that I even forgot to mention our dear Ticinesi in my thanks. I immediately wrote to them but it shows how difficult it can be! But you have not written in vain!!

As for the Catering question we all agree but the whole matter is not as simple as it appears to be. While the people could no doubt be more helpful by showing much greater courtesy I don't think that we can find a more devoted Caterer than the Schmid family. The main difficulty is Central Hall itself, its structure, but there again where could we have the accommodation we need on the terms we have it? I can assure you that the Committee would be most grateful for any concrete and helpful suggestions and

no doubt our friends Schmid will also see what can be done.

I was very touched by the letter of Mr. Lerch. How nice it would be to have our compatriots from the Provinces! Saturdays unfortunately are most difficult in London, the young girls cannot attend, many people are away as we found out. The best we can do is what we did last year, take our visitors to the Provinces where — as we found in Manchester — a wonderful welcome is certain for them.

Thank you again for your help and any suggestions sent to me will be, I assure you, duly studied.

Yours sincerely,

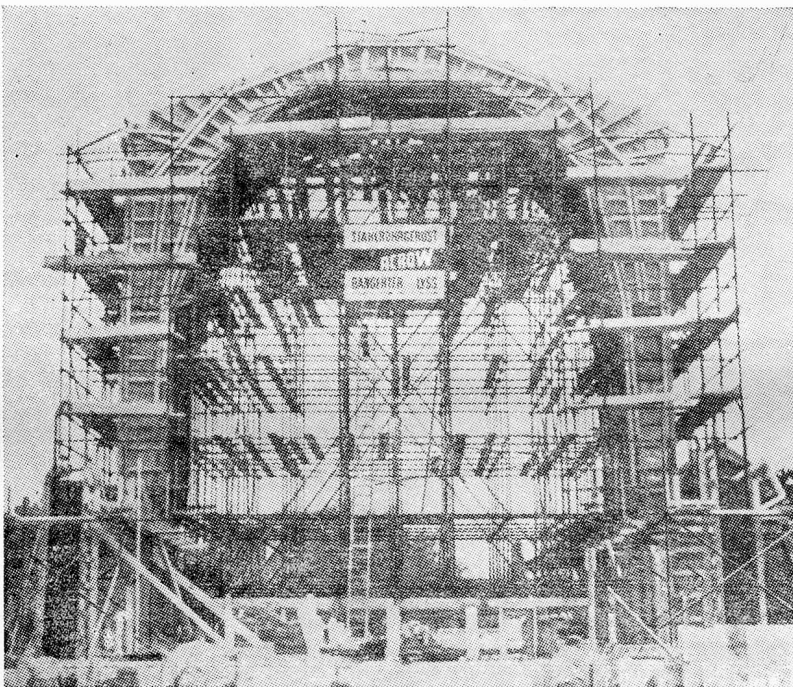
Alfred Renou,  
Président de la Fête Suisse.

*Make delicious*

# OVALTINE

*Your Regular Family Beverage*

# ACROW *in Switzerland*



The Acrow Organisation has many ramifications. Chief among them is the service it renders to building contractors in all parts of the world.

On the construction of this church at Dubendorf, Zurich, for example, we were responsible for 40,000 feet of scaffolding, forming a mobile support to temporary shuttering for eight arches similar to the one illustrated.



ACROW (ENGINEERS) LTD.,  
South Wharf, Paddington, London, W.2  
AMBassador 3456 (20 lines)