

Zeitschrift: Schweizerische numismatische Rundschau = Revue suisse de numismatique = Rivista svizzera di numismatica
Herausgeber: Schweizerische Numismatische Gesellschaft
Band: 93 (2014)

Artikel: The early profile-head drachms of Larissa
Autor: Lorber, Catharine C.
DOI: <https://doi.org/10.5169/seals-515032>

Nutzungsbedingungen

Die ETH-Bibliothek ist die Anbieterin der digitalisierten Zeitschriften auf E-Periodica. Sie besitzt keine Urheberrechte an den Zeitschriften und ist nicht verantwortlich für deren Inhalte. Die Rechte liegen in der Regel bei den Herausgebern beziehungsweise den externen Rechteinhabern. Das Veröffentlichen von Bildern in Print- und Online-Publikationen sowie auf Social Media-Kanälen oder Webseiten ist nur mit vorheriger Genehmigung der Rechteinhaber erlaubt. [Mehr erfahren](#)

Conditions d'utilisation

L'ETH Library est le fournisseur des revues numérisées. Elle ne détient aucun droit d'auteur sur les revues et n'est pas responsable de leur contenu. En règle générale, les droits sont détenus par les éditeurs ou les détenteurs de droits externes. La reproduction d'images dans des publications imprimées ou en ligne ainsi que sur des canaux de médias sociaux ou des sites web n'est autorisée qu'avec l'accord préalable des détenteurs des droits. [En savoir plus](#)

Terms of use

The ETH Library is the provider of the digitised journals. It does not own any copyrights to the journals and is not responsible for their content. The rights usually lie with the publishers or the external rights holders. Publishing images in print and online publications, as well as on social media channels or websites, is only permitted with the prior consent of the rights holders. [Find out more](#)

Download PDF: 12.07.2025

ETH-Bibliothek Zürich, E-Periodica, <https://www.e-periodica.ch>

CATHARINE C. LORBER

THE EARLY PROFILE-HEAD DRACHMS OF LARISSA

PLATE 1–5

Commentary

Although advances have been made in the study of Larissa's facing head coinage, Fritz Herrmann's 1925 article remains a standard reference for the city's silver coinage overall¹. Herrmann classified the profile head drachms of Larissa into four categories: Group IVa comprised drachms from a single obverse die depicting a female head right in a refined style, paired with the reverse type of a horseman on foot restraining his mount, and also with various galloping horse varieties. Group IVb consisted of a drachm and a triobol with a crouching horse on the reverse, a plant on the ground beneath its belly, and the abbreviated name ΠΛΕΙ inscribed in large letters in the exergue. Group IVc collected additional drachms with the reverse type of a galloping horse, not included in Group IVa. Group V was reserved for a drachm whose obverse was modelled after the Syracusan decadrachms of Euainetus and whose reverse featured a trotting stallion with the full ethnic ΑΑΠΙΣΑΙΩΝ.

Herrmann's classification has since been modified based on hoard evidence². His Groups IVa and IVc represent the earliest drachms to portray the head of the nymph Larissa. The hoard record indicates that Herrmann's Group V came later, interrupting the sequence of facing head drachms. We do not possess a hoard provenance for his Group IVb, but the reverse type is characteristic of Larissa's late facing head drachms. The Group IVb drachm cited by Herrmann was poorly documented³. Facing head drachms with the reverse type of Group

¹ F. HERRMANN, *Die Silbermünzen von Larissa in Thessalien*, *Zeitschrift für Numismatik* 35, 1925, pp. 3–69. For the revision of Herrmann's classification of the facing head coinage, see T.R. MARTIN, *The Chronology of the Fourth-Century B.C. Facing-Head Coinage of Larissa*, *Museum Notes* 28, 1983, pp. 1–34; C. C. LORBER, *The Early Facing Head Drachms of Thessalian Larissa*, in H. NILSSON (ed), *Florilegium Numismaticum: Studia in Honorem U. Westermark Edita* (Stockholm, 1992), pp. 259–282; *ead.*, *A Hoard of Facing Head Larissa Drachms*, *SNR* 79, 2000, pp. 7–15.

² C. C. LORBER, *Thessalian Hoards and the Coinage of Larissa*, *American Journal of Numismatics* 20, 2008, pp. 125, 129.

³ Herrmann cited MIONNET, *Suppl. III*, p. 293, no. 192, recorded from a plaster cast and not illustrated.

IVb, including the exergual inscription ΠΑΕΙ, belong to the earliest phase of that coinage (phase L-1)⁴. The ΠΑΕΙ triobols, despite their profile head, surely belong to the same period.

Herrmann cited both style and fabric in his treatment of Groups IVa and IVc. After suggesting Peloponnesian artistic influence on the depiction of the nymph, he denigrated the heads of Group IVc as a bit spiritless and inexpressive. He based his chronology on the form of the reverse dies, observing that dies with square outlines were ultimately supplanted by round dies. A reverse die link between the profile head series (Herrmann pl. iv, 13; our A10/P21) and the bull wrestler series (Herrmann pl. iii, 22) led him to the conclusion that his Group IVa was produced concurrently with the bull wrestler coinage, from a second anvil, c. 420–400. In his view, the earliest issues of Group IVa were contemporary with the bull wrestler drachms of his Group III, Series H, and Group IVa continued in production alongside his Group III, Series J, where the die link occurs, and then alongside Group III, Series K. Groups IVb and IVc were slightly later than IVa but ended no later than c. 395. For a brief period, a third anvil was added to allow for the production of Group IVc alongside IVa⁵.

Date	Bull wrestler, 1 st anvil	Profile head, 2 nd anvil	Profile head, 3 rd anvil
c. 420	Group III, Series H	Group IVa	
	Group III, Series J (die link)	Group IVa	Group IVc (die link)
c. 400	Group III, Series K	Group IVa	Group IVc
c. 400–c. 395	Group III, Series L	Group IVb	

Table 1. Production as envisaged by Herrmann

The present die study demonstrates that the early profile head drachms were indeed produced in two series, though these do not conform to Herrmann's Groups IVa and IVc. Both series exhibit the alternating use of square dies and round dies, whose shapes correlate with particular dispositions of the legend.

Series One involves seven obverse and fourteen reverse dies. The first two obverse dies, A1 and A2, are of fine quality and clearly stem from the same engraver, whom we shall call Artist A. His compact heads of the nymph Larissa are severe and dignified. His first reverse die, P1, was also innovative: it shows a Thessalian man wearing the kausia and a himation, standing on the ground on the far side of a bridled horse, restraining the animal. This reverse type would be

⁴ C. C. LORBER, *The Beginning of the Late Facing Head Drachm Coinage of Larissa*, forthcoming. These issues were also associated by HERRMANN 1925, p. 37, but he placed the facing head drachms with the inscription ΠΑΕΙ at the beginning of the facing head coinage.

⁵ HERRMANN 1925, pp. 37–38.

revived in the middle facing head drachm coinage of the fourth century⁶. Dies A3 through A6 of Series One are the work of a different engraver, Artist B. These are among the dies that Herrmann slighted as lacking in spirit, but we can appreciate a fresh and naive charm. The die engraving technique of Artist B was nevertheless deficient, because his dies show a tendency to break near the tip of the earring. The final die, A7, has much in common with A3 through A6 but appears to be the work of a different engraver, Artist C, who emphasized the youth of his subject at the expense of her dignity. Series One employed either square or round reverse dies through die P7, but only round dies from reverse die P8 onward to the end of the series with P14.

Series Two involves only four obverse and nine reverse dies. The initial obverse die, A8, closely resembles die A1 and is also attributable to Artist A. Die A9 is typologically related to A2 in that these are the only dies that represent the nymph Larissa with rolled hair, whereas all other dies show her hair confined in a sphendone. Die A9 shares the severity of A1, A2, and A8 and may be another work of Artist A. Of the two remaining obverse dies of Series Two, A10 was cut by Artist B and A11 by Artist C. The reverse dies of Series Two alternated shapes for the entire duration of the series.

The resemblance between dies A1 and A8, on the one hand, and between dies A7 and A11 on the other, suggests that Series One and Two began and ended simultaneously. We can make a further assumption that dies attributable to the same artist were engraved contemporaneously and employed more-or-less contemporaneously, meaning that die A10 of Series Two should be contemporary with dies A3, A4, A5, and/or A6 of Series One. The pattern of die linkage is somewhat complex in the earlier part of Series One, with three reverse dies shared by A1 and A2, and two reverse dies shared by A2, A3, and A4, one of which was also shared by A5. These patterns can be explained if we assume the addition of an extra anvil or anvils so that some of these dies (at least A3 and A4) could be used in parallel. The obverse dies of Series Two were probably used sequentially on a single its anvil. The pattern of production can be envisioned approximately:

Series One	Series One	Series Two
Anvil 1	Anvil 3	Anvil 2
A1		A8
A2		A9
A3	A4	A10
A5		
A6		
A7		A11

Table 2. Production of the profile head drachms

⁶ HERRMANN 1925, Group VII D, pl. vi, 7–8; LORBER 2000, p. 13, 6, and pl. 1, 6; see also C. LORBER – C. SHAHAR, *The Facing Head Coins of Larissa*, s.v. Middle Facing Head Drachms, Series III, at www.lightfigures.com/numismat/larissa/index.php.

There are further differences between the two series. The survival rate of Series One (N/d 23.00) is much higher than that of Series Two (N/d 17.00). The survival rate of the two series differs even more radically in certain hoards. The commerce, 1988 hoard (*CH IX*, 67) included 28 profile head drachms, 26 from Series One and only 2 from Series Two (both A10/P20). An as-yet unpublished Thessalian hoard in commerce, 2007, included 8 profile head drachms, all but one from Series Two, and of those 7, 6 are from the same die pair near the end of Series 2 (A10/P23). This pattern suggests that the two series – probably products of different workshops within the mint – were kept separate and distributed to different recipients, perhaps different military units.

The die study has identified a second reverse die link between the bull wrestler series and die P20 of the profile head series; the link is provided by CNG E-Auction 170, 8 August 2007, lot 43 (see pl. 5, A). Both of the linking reverse dies fall near the end of Series Two and both links are to bull wrestler drachms of Herrmann's Group III Series J. Die P20 appears more worn when used with the bull wrestler obverse, and the position of P20 and P21 near the end of Series Two suggests that they were both transferred from the profile head coinage to the bull wrestler coinage⁷. Later bull wrestler drachms, with round reverse dies only, include those whose obverse types show a wrestler flying horizontally to the left or right (Herrmann Group III Series K) as well as drachms with a convex obverse showing a squat hero and mushy cloak (a type not illustrated by Herrmann)⁸. These were presumably the last of the bull wrestler drachms⁹. Die study of these late bull wrestler drachms is not complete, but the current count of obverse dies stands at eleven, identical to the number of obverse dies for the early profile head drachms.

The available evidence suggests a revision to Herrmann's hypothesis that three anvils were working concurrently, one producing bull wrestler drachms, the second producing profile head drachms of Group IVa, and the third added a bit later to produce Group IVc. There is no clear evidence for the continuing production of bull wrestler drachms alongside the profile head drachms; it is perhaps more likely that the production of the bull wrestlers was suspended and subsequently revived. The present die study shows that the early profile head drachms were struck from a minimum of two anvils throughout the time of their production, and that Series One briefly required the addition of one or more extra anvils.

⁷ The later dies P22 and P23 have a square format, and this may be the reason that they were not transferred along with, or in preference to, P20 and P21.

⁸ NFA Buy or Bid Sale, 9 September 1993, lots 116–119.

⁹ Herrmann's Group III Series L (round reverse die) shares the obverse die of his Group III Series E (square reverse die), suggesting that the two varieties fall together somewhat earlier in the bull wrestler sequence.

Bull wrestler Anvil 1	Series One Anvil 1	Series One Anvil 3	Series Two Anvil 2
Group III H	A1		A8
	A2		A9
	A3	A4	A10 (two reverse die links to Group III J, one passing through A11)
	A5		
	A6		
	A7		A11 (reverse die link to Group III J)
Group III J (reverse die links to profile heads)			
Group III K			

Table 3. Proposed production of bull wrestler and profile head drachms

These patterns imply that the profile head type was introduced in a historical context that required a somewhat urgent provision of coinage. Herrmann's dates for the profile head drachms, c. 420–c. 395, should thus be regarded as termini rather than an absolute chronology.

It is, in fact, possible to estimate the time required for the production of Larissa's profile head drachms. The recommended estimates of average obverse die productivity of 15,000 coins (Marchetti) or 20,000 coins (Callataÿ) yield a total estimated emission of 165,000 or 220,000 coins¹⁰. Marchetti and Callataÿ's estimates pertain to tetradrachms and it is possible that the productivity of drachm dies was somewhat lower. Medieval mint archives indicate a maximum daily output of 3,000 coins for a single anvil¹¹. We know that at least two anvils were employed contemporaneously in the production of Series One and Series Two, meaning that the maximum daily output was 6,000 coins. At that rate, an emission of 165,000 coins could have been struck in 28 days and an emission of 220,000 coins in 37 days. A different methodology for calculating the probable duration of minting relies on an estimate (for tetradrachms) that four obverse dies represent a month's production¹². Making no allowance for any difference between drachms and tetradrachms, the seven dies of Series One imply seven weeks of minting. The short period of production, halved by the use of two anvils, suggests that we are dealing with an emergency coinage.

¹⁰ P. MARCHETTI, *Autour de la frappe du nouvel amphictionique*, RBN 145, 1999, p. 109; F. DE CALLATAÿ, *Quantifying Monetary Production in Greco-Roman Times: A General Frame*, in: F. DE CALLATAÿ (ed.), *Quantifying Monetary Supplies in Greco-Roman Times* (Bari 2011), pp. 9, 12–13, 23.

¹¹ F. DE CALLATAÿ, *Calculating Ancient Coin Production: Seeking a Balance*, NC 155, 1995, p. 301.

¹² F. DE CALLATAÿ, *Calculating Ancient Coin Production: Seeking a Balance*, NC 155, 1995, pp. 300–301; *id.*, *L'Histoire des guerres mithridatiques vue par les monnaies*. *Numismatica Lovaniensia* 18 (Louvain-la-Neuve 1997), pp. 46–47.

As opposed to the bull wrestler types, which were related to the Thessalian *koinon*, coin types portraying the eponymous nymph Larissa were explicitly civic¹³. The introduction of such a poliad theme after decades devoted to depicting the *taurothakapsia* must be related to political events. Toward the end of the fifth century Lycophron of Pherae (c. 406–390) sought to impose himself as *tagos* of the *koinon*. His ambition split the Thessalians. The Aleuads of Larissa led the opposition to Lycophron but he defeated them and their allies in 404. Nevertheless, the Thessalian *koinon* was not reconstituted until the late 370s and even after that date the Aleuads continued to oppose the domination of the tyrants of Pherae. The long series of civic coins of Larissa bearing the facing head of the nymph Larissa was probably introduced in the context of opposition to Lycophron and served to finance the military operations against him and his successors at Pherae¹⁴. If this interpretation is correct, the brief episode of a civic coinage featuring the profile head of Larissa can probably be dated to the year 404 and represents the first expression of this opposition, temporarily extinguished by defeat and a return to the *taurothakapsia* types¹⁵. It is extremely unlikely that the Larissa mint continued to strike bull wrestler drachms for the *koinon* alongside civic drachms featuring the profile head of the nymph Larissa.

¹³ K. LIAMPI, Das Corpus der Obolen und Hemiobolen des Thessalischen Bundes und die politische Geschichte Thessaliens im 2. Viertel des 5. Jahrhunderts v. Chr., in: W. LESCHHORN – A.V.B. MIRON – A. MIRON (eds.), *Hellas und der griechische Osten: Studien zur Geschichte und Numismatik der griechischen Welt* (Saarbrücken 1996), pp. 99–126.

¹⁴ Introduction of the early facing head drachms was tentatively dated c. 405–400 and the end of the series c. 370 by C. C. LORBER, *Thessaly, 1983 hoard* (*CH IX*, 64), *SNR* 88, 2009, pp. 127, 128.

¹⁵ A date of 400 for introduction of the profile head drachms is implied in the catalogue of E. BABELON, *Traité des monnaies grecques et romaines*, Part 2, Vol. 4 (Paris 1907), p. 390. The early profile head drachms are tentatively dated c. 410–405 in *The Evolution of Larissian Coinage* at <http://www.lightfigures.com/numismat/larissa/index.php>.

*Catalogue**Series One.*

A1. Female head r. of compact style, with wavy hair confined by sphendone, wavy tuft emerging from top of sphendone, dotted border. Flaw develops in field before neck.

P1. Λ AP—I— Σ AI—A, Thessalian hero in kausia and cloak walking r. on solid ex. line, restraining bridled horse leaping r. in foreground. Square die.

a.	5.91 g	12	Berlin, Löbbecke 1906. Herrmann pl. iv, 4.
b.	6.03 g	12	ANS 67.152.236. Ex Newell.
c.	5.91 g	12	Ashmolean Museum. <i>SNG Ashmolean</i> 3872. <i>Weber</i> 2846. Flaw visible before neck.
d.	6.10 g		BnF. <i>Luynes</i> 1845. Gallica website ark/12148/btv1b84766762.
e.	6.21 g	12	BM. <i>BMC</i> 52, pl. v, 11. <i>Traité</i> IV 692, pl. ccxcviii, 1. Bequeathed by Richard Payne Knight, 1824.
f.	6.08 g		Boston 892. Warren 699.
g.	5.91 g		Jameson I 1091.
h.	6.03 g		Reichmann XXX, 11–12 December 1924, lot 511.
i.	5.89 g		Lockett sale VI, lot 1433. <i>SNG Lockett</i> 1570. Naville VI (Bement I), 28 January 1924, lot 916. Ex Allatini.
j.	5.89 g		Victor England V, 9 December 1988, lot 93. Ex commerce 1988 hoard (<i>CH IX</i> , 67), inv. 136.
k.	6.10 g		Christie's, New York, 2 May 1989, lot 661. Ex commerce 1988 hoard (<i>CH IX</i> , 67).
l.	5.83 g		Giessener Münzhandlung 44, lot 270.
m.	5.98 g		Gorny & Mosch 122, 10 March 2003, lot 1287. Rauch 42, 16–18 January 1989, lot 2973.
n.	5.86 g		Athena 3, 15 May 1990, lot 107. Flaw visible before neck.
o.	5.99 g	12	CNG 90, 23 May 2012, lot 63. Ex BCD collection. Thessaly hoard, c. 1996 (<i>CH IX</i> , 77), inv. E-1-42. No flaw visible.
p.			Larissa environs hoard, 1984 (<i>CH VIII</i> , 137), pl. xii, 2.
q.	5.91 g		CNG 93, 22 May 2013, lot 243. Herbert Cahn collection. MMAG 64, 30 January 1984, lot 113. Sartiges 218. Hirsch XXV (Philipsen), 29 November 1910, lot 625.
r.	6.10 g		Hess Nachf., 18 March 1918, lot 356.
s.	6.26 g		BnF. Gallica website ark/12148/btv1b8572435f.
t.	6.08 g		BnF. Gallica website ark/12148/btv1b8572436v.
u.	5.65 g		Peus 384, 2 November 2005, lot 197. Peus 380, 3 November 2004, lot 337.
v.	5.85 g		Sternberg XXIII, 29 October 2000, lot 250.
w.			Herakles 12334526536.
*x.	6.00 g	12	Nomos 4 (BCD), 10 May 2011, lot 1130.
y.	6.08 g	12	Triton XV, 3 January 2012, lot 179.

z. 6.02 g CNG E-Auction 292, 5 December 2012, lot 57. Ex BCD collection.

P2. ΛAPI above horse, ΣAIA beneath, bridled horse leaping r., reins looped at back of neck. Square die. Tiny flaw to r. of letter Σ.

*a. 5.86 g Gorny & Mosch 117, 14 October 2002, lot 198. CNG 63, 21 May 2003, lot 301.

A1'. Same die. New flaw immediately under chin.

P3. ΛAPI above horse, ΣAIA (retrograde) beneath, bridled horse leaping l., rein trailing before gaskins, between letters Σ and A. Square die. Large flaws in lower field beneath letters I and A.

a. Berlin. Herrmann pl. iv, 5. No flaw visible.
b. 5.91 g 12 ANS 1944.100.16950. Ex Newell.
*c. Commerce, 1988 hoard (CH IX, 67), inv. 149. No flaw visible.
d. 5.89 g Giessener Münzhandlung 42, lot 213.
e. 5.93 g Giessener Münzhandlung 44, lot 269.
f. 5.13 g 12 NFA FPL 41, June 1992, lot 1. Commerce, 1989 hoard (CH IX, 65), inv. 4657. Flaw under chin.
*g. 5.94 g Hirsch 284, 26 September 2012, lot 2331. Flaw under chin.

P4. ΛAPIΣA (curving) above horse, AI beneath, bridled horse half-rearing l., rein trailing beneath center of belly, between letters A and I. Apparently a round die.

a. Berlin. Herrmann pl. iv, 7.
b. 5.91 g Triton XV, 3 January 2012, lot 376.4. J. Schulman, 8 June 1931, lot 113. Sotheby (Delbeke), 24 April 1907, lot 116. Hirsch XIII (Rhousopoulos), 15 May 1905, lot 1313.
c. Commerce, 1988 hoard (CH IX, 67), inv. 148.
*d. 5.96 g 3 Commerce, 1989 hoard (CH IX, 65), inv. 4659.
e. 5.96 g 3 Commerce, 1989 hoard (CH IX, 65), inv. 4661.
f. 6.01 g 12 Commerce, 1989 hoard (CH IX, 65), inv. 4658. Rust by forelegs.
g. 5.79 g 10:30 Thessaly hoard, c. 1996 (CH IX, 77), inv. E-1-41.
h. 5.98 g CNG E-Auction 292, 5 December 2012, lot 58. Ex BCD collection.
i. 5.79 g Fetzmann 147, 5 November 2013, lot 35. Fetzmann 144, 25 June 2013, lot 36. Fetzmann 142, 26 February 2013, lot 45.

A1''. Same die. New horizontal flaw across cheek below eye (faintly visible on some coins struck with P4).

P5. ΛAPI above horse, ΣAIA beneath, bridled horse leaping l., rein trailing beneath center of belly, between letters I and A. Square die.

- a. Berlin. Herrmann pl. iv, 6.
- b. 6.03 g 4 Fitzwilliam Museum. *McClean* 4608, pl. 173, 4.
- c. 6.04 g 11 Fitzwilliam Museum (Lewis Collection). *SNG Fitzwilliam* 585.
- *d. 6.01 g 11 BnF. *SNG Delepierre* 1110. Gallica website ark/12148/btv1b8500053f.
- e. 5.99 g BnF. Gallica website ark/12148/btv1b85724237.
- f. 5.96 g 3 Commerce, 1989 hoard (*CHIX*, 65), inv. 4660. Flaw under chin.
- g. 6.06 g 1 BM. *BMC* 51. Bequeathed by Richard Payne Knight, 1824. Flaws under chin, on cheek, and on border at 7:00).

P6. ΛΑΡΙΣΑΙ (curving) above horse, bridled horse half-rearing r., rein trailing beneath center of belly. Apparently a round die.

- a. 6.13 g BnF. Gallica website ark/12148/btv1b8572424n.
- b. 6.14 g 6 Hess Leu sale, 12–13 April 1962, lot 198.
- *c. 6.00 g Künker 193, 26 September 2011, lot 172.

A2. Female head l., of compact style, with narrow headband and rolled hair, a few hairs escaping above roll, dotted border. Small flaws in field behind neck, a pelletlike flaw in field behind rolled hair.

P3. Same die as employed with A1.

- *a. 6.13 g BnF. *Traité* IV 696, pl. ccxcvii, 7. Gallica website ark/12148/btv1b85724326.

P4. Same die as employed with A1.

- a. 5.80 g 8 Lanz 60, 11 June 1990, lot 142.
- *b. 6.02 g 6 BM. *BMC* 50. Purchased from James Millingen, 1840. Rev. die very rusty.
- c. 6.04 g Hirsch 272, 4 May 2011, lot 237.

P6. Same die as employed with A1.

- a. Berlin. Herrmann pl. iv, 14.
- b. 6.06 g 12 Ashmolean Museum. *SNG Ashmolean* 3873.
- *c. 6.13 g 6 BM 1933,0214.24. Purchased from Rev. Edgar Rogers, 1933.
- d. 5.80 g 10:30 Manchester University Museum. *SNG Manchester* 826.
- e. 6.14 g BnF. Gallica website ark/12148/btv1b8572429q.
- f. Commerce, 1988 hoard (*CHIX*, 67), inv. 145.
- g. Commerce, 1988 hoard (*CHIX*, 67), inv. 155.
- h. 5.87 g Rauch 42, 16–18 January 1989, lot 2971.
- i. 6.13 g 6 NFA FPL 41, June 1992, lot 3. Ex commerce, 1989 hoard (*CHIX*, 65), inv. 4656.

- j. 5.84 g 4 Nomos 8, 22 October 2013, lot 125. Triton XV, 3 January 2012, lot 376.6. Ex BCD collection. Ex Thessaly hoard, c. 1996 (*CH IX*, 77), inv. E-1-35.*
- k. 5.89 g 9 CNG 90, 23 May 2012, lot 64. Ex BCD collection.

P7. Λ API above, Σ AIA (retrograde) below, horse leaping l., wavy rein trailing from center of belly, roughly parallel to belly, ending between letters A and Σ . Square die.

- a. Commerce, 1988 hoard (*CH IX*, 67), inv. 139.
- *b. Commerce, 1988 hoard (*CH IX*, 67), inv. 153.
- c. Commerce, 1988 hoard (*CH IX*, 67), inv. 144.

P8. Λ API Σ (curving) above, AIA below, horse galloping l., rein trailing beneath belly between letter A and hind legs. Round die.

- *a. 6.17 g BnF. *Traité* IV 697, pl. ccxcviii, 8. Gallica website ark/12148/btv1b 8572431s.

P9. Λ API Σ A (curving) above, AI below, horse galloping r., rein wrapped round neck and trailing beneath belly. Round die.

- a. 6.04 g 12 BM. *BMC* 49. Purchased from Thomas Burgon, 1841. Flaws on neck, behind neck, and on border at 1:00.
- b. 6.04 g Hirsch 293, 25 September 2013, lot 2247. Hirsch 287, 7 February 2013, lot 1872. Hirsch 281, 2 May 2012, lot 268. New York Sale XVII, 4 January 2012, lot 327. Spink *Numismatic Circular* XCVII/1 (February 1989), lot 16. Victor England V, 9 December 1988, lot 94. Ex commerce, 1988 hoard (*CH IX*, 67), inv. 138. Same flaws.
- *c. 5.98 g 12 NFA XXXIII, 3 May 1994, lot 925. Ex commerce, 1989 hoard (*CH IX*, 65), inv. 4655. Same flaws.
- *d. 5.79 g CNG 69, 8 June 2005, lot 266.

A3. Female head l., with large features, wearing pendant earring, hair confined by ampyx and sphendone, dotted border. Large flaw develops in front of earring, extending down neck at same angle as earring.

P8. Same die as employed with A2.

- a. 6.01 g 7 NFA FPL 41, June 1992, lot 4. Ex commerce, 1989 hoard (*CH IX*, 65), inv. 4646. Flaw in early state of development, an oblique line before and parallel to earring, extending just past its tip.
- b. 6.03 g 1 Commerce, 1989 hoard (*CH IX*, 65), inv. 4648.
- c. 6.08 g Naville VI (Bement 1), 28 January 1924, lot 915.

- d. Stockholm, Royal Cabinet. *SNG Sweden* 1214. Flaw slightly more developed than on specimens a–c, extending down neck with two separate thickened areas.
- e. 6.09 g BnF. Gallica website ark/12148/btv1b8473105b. Flaw as for specimen d.
- f. Platt sale (Luneau), 26 March 1922, lot 440. Flaw as for specimen d.
- *g. 6.14 g Victor England V, 9 December 1988, lot 92. Ex commerce, 1988 hoard (*CH IX*, 67), inv. 141. Flaw as for specimen d.
- h. 5.98 g Künker 216, 8 October 2012, lot 306. Commerce, 1988 hoard (*CH IX*, 67), inv. 133. Flaw as for specimen d.
- i. 6.08 g 6 Triton XV, 3 January 2012, lot 376.3. Ex BCD collection.
- j. Commerce, 1988 hoard (*CH IX*, 67), inv. 146. Flaw in more developed state, with breaks on neck slightly larger.
- k. 6.12 g 7 BnF. *SNG Delepierre* 1113. Gallica website ark/12148/btv1b8500056p. Die state uncertain due to damage to coin.
- l. Larissa environs hoard, 1984 (*CH VIII*, 137), pl. xii, 3.
- m. 5.99 g Peus 376, 29 October 2003, lot 262.
- n. 5.99 g Gorny & Mosch 208, 16 October 2012, lot 1341.
- o. 6.00 g CNG E-Auction 292, 5 December 2012, lot 61. Ex BCD collection.

P10. Λ (horizontally) before horse, $\Lambda\Pi\Xi\Lambda$ (retrograde and curving) above, IA beneath, free horse rearing r. on ex. line. Round die.

- *a. 5.94 g 6 Triton XV, 3 January 2012, lot 376.2. *CH VIII*, 137, pl. xii, 3.
- b. Commerce, 1988 hoard (*CH IX*, 67), inv. 161. Flaw indicates die state earlier than specimen h above.
- c. 6.13 g 3 *Dewing* 1391. Hamburger sale, 12 June 1930, lot 731. Flaw in more developed state, with breaks on neck yet larger than in specimen h above.
- *d. 5.98 g 2 Commerce, 1989 hoard (*CH IX*, 67), inv. 4649. Flaw as for specimen b.
- e. 5.93 g 4 Thessaly hoard, c. 1996 (*CH IX*, 77), inv. E-1-37.
- f. 5.92 g 6 BM 1913,0212.30. Donated by Sir Hamilton Lang, 1913.
- g. 5.95 g 5 BM 1933,0214.419. Purchased from Rev. Edgar Rogers, 1933. Flaw on neck more developed.
- h. 6.16 g BnF. Gallica website ark/12148/btv1b8572426g.

P9. Same die as employed with A2.

- a. Berlin. Herrmann pl. iv, 12.
- *b. 5.98 g 3 Commerce, 1989 hoard (*CH IX*, 65), inv. 4650. Flaw in advanced state, with upper break on neck very large.
- c. 5.98 g Rauch 44, 12–14 February 1990, lot 150.

- A4. Female head l., with large features, wearing pendant earring, hair confined by ampyx and sphendone, dotted border. Very similar to A3, but note large, elongated eye, differences in hair before ear, locks combed over ampyx, and dotted border. Flaw develops beneath tip of earring.

P8. Same die as employed with A2 and A3.

- | | | | |
|-----|--------|----|---|
| a. | 5.93 g | 10 | Kricheldorf XLIII, 11–12 March 1992, lot 223. No flaw. |
| *b. | | | Commerce, 1988 hoard (<i>CH IX</i> , 67), inv. 156. No flaw. |
| *c. | 5.98 g | 9 | Commerce, 1989 hoard (<i>CH IX</i> , 65), inv. 4647. Chevron-shaped flaw beneath tip of earring. |

P9. Same die as employed with A2 and A3.

- | | | | |
|-----|--------|---|--|
| a. | 6.19 g | 3 | Fitzwilliam Museum. <i>McClean</i> 4605, pl. 173, l. Flaw extends toward back of neck. |
| *b. | 6.15 g | | Roma 5, 23 March 2013, lot 175. Gorny and Mosch 207, 15 October 2012, lot 202. Flaw more developed, extending forward across neck and into field, with a branch going down middle of neck. |

- A5. Female head l. as preceding but with smaller eye, smaller tuft of hair before ear with large spit-curl on cheek, dotted border. Nearly vertical flaw develops on cheek behind mouth. Another on cheekbone under eye. Small oblique flaw under neck truncation.

P9. Same die as employed with A2, A3, and A4.

- | | | | |
|-----|--------|----|--|
| a. | 6.04 g | | BnF 258. Gallica website ark/12148/btv1b8572430c . |
| *b. | 6.06 g | 12 | Triton XV, 3 January 2012, lot 181, ex BCD collection. Leu 38, 13 May 1986, lot 76. Nanteuil 841. Bourgey, Paris, 29 May 1911 (Rous), lot 120. Sotheby, London, 22 April 1909 (White-King), lot 137. |
| c. | 5.95 g | | CGF 57, 20 February 2013, lot 105. Commerce, 1988 hoard (<i>CH IX</i> , 67), inv. 135. |
| d. | | | Commerce, 1988 hoard (<i>CH IX</i> , 67), inv. 142. |
| e. | | | Commerce, 1988 hoard (<i>CH IX</i> , 67), inv. 151. |
| f. | 6.11 g | 1 | Thessaly hoard, c. 1996 (<i>CH IX</i> , 77), inv. E-1-36. |
| g. | 5.98 g | 2 | Nomos 4 (BCD), 10 May 2011, lot 1428.2. Burgan V.S.O., 11 January 1986, lot 22. |

P11. $\Lambda\text{API}\Sigma\text{AI}$ (curving) above, bridled horse half-rearing r., rein trailing beneath center of belly. Round die.

- | | | | |
|----|--------|----|--|
| a. | 5.94 g | 12 | BM 1949,0411.303. Bequeathed by John Mavrogordato, 1949. |
| b. | 6.00 g | 3 | Fitzwilliam Museum. <i>McClean</i> 4606, pl. 173, 2. |
| c. | 6.17 g | 12 | ANS 1944.100.16951. Ex Newell. Flaws only faintly visible. |

d.	6.11 g		BnF. <i>Traité</i> pl. ccxcviii, 3. Gallica website ark/12148/btv1b8572427w.
e.			Feuardent, sale, 9–10 June 1913, lot 187.
*f.	6.03 g		Künker 174, 24 September 2010, lot 247. Hess-Divo 314, 4 May 2009, lot 1102. Platt sale (Luneau), 26 March 1922, lot 441. Sotheby's (Headlam), 8 May 1916, lot 395. Sotheby's (Brown), 3 February 1903, lot 473.
g.			Ratto sale, Lugano, 4 April 1927, lot 1005. Possible flaw on reverse on hooves of hind legs.
h.	5.99 g		Naville XIII (1928), lot 704. Naville V (1923), lot 1741.
i.	5.93 g		Boutin, <i>Pozzi Collection</i> , 2769. <i>Pozzi</i> 1218.
j.	6.10 g	12	Hess-Leu 31, 6–7 December 1981, lot 280. Lockett sale lot 1432. <i>SNG Lockett</i> 1569. Naville VI (Bement 1), 28 January 1924, lot 914.
k.	6.13 g		Hess 253, 8–9 March 1983, lot 162. Naville XIII (1928), lot 703. Sotheby's (Hawkins), 1909, lot 37. Ex Allatini. Locker-Lampson 176.
l.	5.83 g		Gorny 44, lot 268.
*m.	5.95 g	9	CNG 90, 23 May 2012, lot 65, ex BCD. Birkler & Waddell 1, 7 December 1979, lot 103.
n.	6.29 g	9	Commerce, 1989 hoard (<i>CH IX</i> , 65), inv. 4651.
o.			Commerce, 1988 hoard (<i>CH IX</i> , 67), inv. 143.
p.			Commerce, 1988 hoard (<i>CH IX</i> , 67), inv. 152.
q.			Commerce, 1988 hoard (<i>CH IX</i> , 67), inv. 158.
r.			Commerce, 1988 hoard (<i>CH IX</i> , 67), inv. 147. Obverse flaw: Horizontal flaw across cheek.
s.	5.87 g	11	Thessaly hoard, c. 1996 (<i>CH IX</i> , 77), inv. E-1-39.
t.	5.93 g		Künker 216, 8 October 2012, lot 305. Peus 399, 4 November 2009, lot 111. Peus 396, 5 November 2008, lot 31. Peus 393, 31 October 2007, lot 176.
u.	5.75 g		CNG E-Auction 292, 5 December 2012, lot 60. Ex BCD collection.

P12. ΛΑΡΙΣΣΑ (curving) above, bridled horse half-rearing r., rein trailing beneath front of belly. Round die.

a.	6.09 g	12	BnF. <i>SNG Delepierre</i> 1112. Gallica website ark/12148/btv1b85000558.
b.	6.81 g		BnF. Gallica website ark/12148/btv1b85724289. The weight appears to be an error.
c.	5.99 g	10:30	ANS 47.2.295. Flaws more developed.
d.	5.71 g		Hirsch XXV (Philipsen), 29 November 1909, lot 621.
e.			Commerce, 1988 hoard (<i>CH IX</i> , 67), inv. 159.
*f.			Commerce, 1988 hoard (<i>CH IX</i> , 67), inv. 162.
g.	5.90 g		Künker 89, 8 March 2004, lot 1244. Vertical flaw on Larissa's cheek.

- A6. Female head l. as preceding, with small eye and spit-curl on cheek, dotted border. Oblique die break on cheek under eye; another flaw extending down neck from earring.

P12. Same die as employed with A5.

- | | | | |
|-----|--------|----|---|
| a. | 6.03 g | 9 | CNG E-Auction 311, 25 September 2013, lot 569, ex Daniel Koppersmith collection. CNG E-Auction 255, 4 May 2011, lot 76. Early state of obverse die, with no flaw on neck. |
| *b. | 6.00 g | 12 | BM. <i>BMC</i> 48, pl. v, 10. <i>Traité</i> IV 594, pl. ccxcviii, 3. Bequeathed by Richard Payne Knight, 1824. |
| c. | 6.00 g | | Hirsch XIII (Rhousopoulos), 15 May 1905, lot 1312. |
| d. | 5.9 g | | Schlessinger 13 (Hermitage), 4 February 1935, lot 813. |

P13. Λ API Σ A (curving) above, IA below, bridled horse galloping r., rein trailing beneath belly behind forelegs, passing between letters I and A. Round die. Pelletlike flaw in field above horse's rump.

- | | | | |
|-----|--------|---|--|
| *a. | | | Commerce, 1988 hoard (<i>CH IX</i> , 67), inv. 160. |
| b. | 5.93 g | 2 | Commerce, 2007 hoard, inv. 8.8. |

- A7. Female head r. with hair confined by sphendone (no tuft), wearing large pendant earring, dotted border. Flaw develops on earring and slight filling develops between sphendone and neck.

P13. Same die as employed with A6, with new flaws between trailing rein and letter A, and above letter A.

- | | | | |
|-----|--------|----|--|
| *a. | 6.07 g | 3 | Nomos 4 (BCD), 10 May 2011, lot 1131. Leu 30, 28 April 1982, lot 99. <i>Traité</i> IV 695, pl. ccxcviii, 5. Nanteuil 842. Bourgey (Bougerol), Paris, 7 June 1909, lot 228. No flaw on earring or filling between sphendone and neck. |
| b. | | | Berlin. Herrmann pl. iv, 10. |
| c. | 6.03 g | 1 | Boston, Museum of Fine Arts. <i>Boston</i> 893. Warren 698. Sotheby's (Northwick), 1859, lot 718. |
| d. | 6.12 g | | <i>Weber</i> 2845. |
| e. | 6.09 g | | Hess Nachf., 18 March 1918, lot 355. Hirsch XXV (Philipsen), 29 November 1909, lot 622. |
| f. | 5.9 g | 12 | Schlessinger 13 (Hermitage), 4 February 1935, lot 812. |
| g. | 6.14 g | | Malter 49 (Dr. J.W. Wilkinson), 15 November 1992, lot 354. Boutin, <i>Pozzi Collection</i> , 2768. Lockett sale VI, lot 1430. <i>SNG Lockett</i> 1567. <i>Pozzi</i> 1217. |
| h. | | | Commerce, 1988 hoard (<i>CH IX</i> , 67), inv. 150. |
| i. | 6.08 g | 1 | Commerce, 1989 hoard (<i>CH IX</i> , 65), inv. 4668. |
| *j. | 5.85 g | 1 | Triton XV, 3 January 2012, lot 376.5. Thessaly hoard, early 1993 (<i>CH IX</i> , 64), Lorber, <i>SNR</i> 88, 2009, 11. |
| k. | 6.03 g | 1 | Thessaly hoard, c. 1996 (<i>CH IX</i> , 77), inv. E-1-32. |

- l. 6.03 g CNG Electronic Auction 67, 24 June 2003, lot 21.

P14. ΛAPIΣ (curving) above, AIA below, bridled horse galloping r., rein trailing beneath center of belly between letters A and I. Round die.

- a. 6.05 g 12 Ashmolean Museum. *SNG Ashmolean* 3874.

Series Two.

- A8. Female head r., of compact style, hair confined by sphendone with narrow band, a few locks escaping above sphendone, dotted border.

P15. ΛAPI above, ΣAIA below, bridled horse leaping r., rein trailing from center of belly, passing between hind legs and letter Σ. Square die. Flaw develops between horse's rump and right leg of letter A.

- a. Berlin. Herrmann pl. iv, 8.
b. 6.06 g Naville XVII (1934), lot 428.
c. 5.83 g 1 Gorny & Mosch 138, 7 March 2005, lot 1276. Commerce, 1989 hoard (*CHIX*, 65), inv. 4670.
*d. 5.89 g 11 Thessaly hoard, c. 1996 (*CHIX*, 77), inv. E-1-40.
*e. 6.04 g Hirsch 212, 5 March 2013, lot 1466. Reverse flaw visible.

P16. ΛAPI above, ΣAI (reading downward) on r., *ON* (retrograde) below, bridled horse leaping r., rein trailing very sinuously from center of belly, ending between hooves of hind legs and retrograde *N*. Square die. Flaw in upper field above letter A. Large flaw behind hocks of hind legs.

- a. 6.28 g 4 Commerce, 1989 hoard (*CHIX*, 65), inv. 4669.
*b. 5.99 g 4 Pecunem, Gitbud & Naumann 10, 1 December 2013, lot 122. CNG E-Auction 292, 5 December 2012, lot 59, ex BCD collection. NFA Buy or Bid Sale, 9 September 1993, lot 138. Commerce, 1989 hoard (*CHIX*, 65), inv. 4671.
c. 6.04 g Hirsch 293, 25 September 2013, lot 2246. Hirsch 287, 7 February 2013, lot 1871. Hirsch 281, 2 May 2012, lot 269. Hirsch 271, 17 February 2011, lot 1937. Hirsch 267, 5 May 2010, lot 227. Hirsch 264, 25 November 2009, lot 233. Hirsch 261, 7 May 2009, lot 249. Hirsch 257–258, 23 September 2008, lot 2152.

A9. Female head r., with long nose, hair rolled. Dotted border.

P16. Same die as employed with A8, with older flaws enlarged and new flaws above horse's head, above crest of neck, and beneath end of rein.

- | | | | |
|-----|--------|------|--|
| a. | 5.67 g | | Triton XV, 3 January 2012, lot 376.1. NFA IX, 10 December 1980, lot 188. Kricheldorf 1, 15 October 1955, lot 286. MMAG FPL 144, March 1955, lot 10. Egger XLI (Fenerly Bey), 18 November 1912, lot 448. Herrmann pl. iv, 15. |
| b. | 5.91 g | 1:30 | BnF. <i>SNG Delepierre</i> 1114. Naville XII, lot 1284. Hirsch XXV (Philipsen), 29 November 1909, lot 623. Gallica website ark/12148/btv1b85000573. |
| c. | 5.91 g | | Naville XIII (1928), lot 705. |
| d. | 5.99 g | 7 | Commerce, 1989 hoard (<i>CH IX</i> , 65), inv. 4665. |
| e. | 6.00 g | 12 | Commerce, 1989 hoard (<i>CH IX</i> , 65), inv. 4666. |
| f. | 5.74 g | | CNG Electronic Auction 170, 8 August 2007, lot 45. |
| *g. | 6.08 g | | Lanz 154, 11 June 2012, lot 115. |

P17. Λ API above, Σ AIA below, bridled horse leaping r., rein trailing from front of belly to end between letters Σ and A. Square die.

- | | | | |
|-----|--------|----|--|
| *a. | 6.09 g | 6 | Commerce, 1989 hoard (<i>CH IX</i> , 65), inv. 4664. |
| b. | 5.81 g | 12 | Thessaly hoard, c. 1996 (<i>CH IX</i> , 77), inv. E-1-33. |
| c. | 5.49 g | 11 | Thessaly hoard, c. 1996 (<i>CH IX</i> , 77), inv. E-1-34. |

P18. Λ API above, Σ (sideways) on r., IA (below), bridled horse half-rearing r., rein trailing from front of belly above letters to end at cannon of left hind leg. Round die. Flaw develops across horse's neck and letter I. Obverse die shows flaw above Larissa's head.

- | | | | |
|-----|--------|----|--|
| a. | 5.97 g | 12 | BM 1933,0214.418. Purchased from Rev. Edgar Rogers, 1933. |
| *b. | 5.91 g | 12 | NFA FPL 41, June 1992, lot 2. Ex commerce, 1989 hoard (<i>CH IX</i> , 65), inv. 4662. No flaw apparent. |
| *c. | 6.08 g | | Helios 8, 13 October 2012, lot 220. Reverse double struck. |
| d. | 5.82 g | | BnF. Gallica website ark/12148/btv1b8480793b. Flaw on horse's neck and letter I. |
| *e. | 5.98 g | 12 | Commerce, 1989 hoard (<i>CH IX</i> , 65), inv. 4667. Flaws as on specimen d. |
| f. | 5.89 g | | Münzhandlung Basel 8, 22 March 1937, lot 263. Flaws as on specimen d. |

P19. Λ API above, Σ AIA below, bridled horse leaping r., rein trailing from behind elbows to pass between hind legs and letter Σ . Square die. Horizontal flaw linking tops of letters Λ AP; flaws on upper size of horse's rump. Obverse die shows flaw above Larissa's head.

- *a. 6.21 g 6 Commerce, 1989 hoard (*CH IX*, 65), inv. 4663.
- *b. 5.92 g 5 Commerce, 2007, inv. 8.7.
- c. 5.80 g Hirsch 293, 25 September 2013, lot 2245. Hirsch 287, 7 February 2013, lot 1870.

A10. Female head l., in style of obverse dies A3–A6, wearing large pendant earring with pendant slanting slightly forward, hair confined by ampyx and sphendone, dotted border.

P20. ΛΑΠΙΣΑ (curving) above, AI below, bridled horse galloping l., rein trailing beneath center of belly, between letters A and I. Round die. Very similar to P21, but wider space between letters A and I. Reverse die link to bull wrestler type (CNG E-Auction 170, 8 August 2007, lot 43).

- a. 6.04 g 7:30 Gorny & Mosch 129, 8 March 2004, lot 103. Hess-Leu 49, 27–28 April 1971, lot 145. Lockett sale 2, lot 1431. *SNG Lockett* 1568. Naville V (1923), lot 1742.
- *b. Commerce, 1988 hoard (*CH IX*, 67), inv. 140.
- *c. Commerce, 1988 hoard (*CH IX*, 67), inv. 154.

A10'. Same obverse die, with barest beginning of flaw in field before forehead and break in border.

P21. ΛΑΠΙΣΑ (slanting) above, AI below, bridled horse galloping l., rein trailing beneath center of belly, between letters A and I. Round die. Die link to bull wrestler type (Herrmann pl. iii, 22).

- a. Berlin. Herrmann pl. iv, 13.
- b. 6.03 g BnF. *Traité* IV 695, pl. ccxcviii, 6. Gallica website ark/12148/btv1b 8572433m.
- c. 5.96 g *Weber* 2847.
- d. *Sartiges* 217.
- e. 5.82 g 7:30 Hess-Leu sale, 24 March 1959, lot 178.
- f. 5.81 g 3 CNG 90, 23 May 2012, lot 66. Ex BCD collection. Thessaly hoard, c. 1996 (*CH IX*, 77), inv. E-1-38.
- *g. 6.00 g 2 Nomos 4 (BCD), 10 May 2011, lot 1132. Rasmussen (P.M. Proschowsky), 10 March 1970, lot 586.
- h. 5.81 g Heritage 3024, 18 April 2013, lot 25742.

A10". Same obverse die, with border more eroded, and flaws developing before forehead and before mouth.

P22. ΛΑΠΙ above, ΣΑΙΑ below, bridled horse leaping r., rein trailing from center of belly between letters Σ and Α. Square die.

- | | | | |
|-----|--------|----|--|
| a. | 6.16 g | | BnF. <i>Traité</i> IV 693, pl. ccxcviii, 2. Gallica website ark/12148/btv1b 85724252. |
| b. | 6.07 g | 3 | BnF. <i>SNG Delepierre</i> 1111. Gallica website ark/12148/btv1b8500054v. |
| c. | 5.94 g | 3 | BM. <i>BMC</i> 47. Purchased from Thomas Burgon, 1841. |
| *d. | 6.05 g | 3 | Roma 4, 30 September 2012, lot 130. Triton XV, 3 January 2012, lot 179. Vinchon, 13 April 1985, lot 262. Bourgey, 5 December 1932, lot 158. Feuardent Frères (M. Collignon), 17–19 December 1919, lot 220. Hirsch XX (H.C. Hoskier), 13 November 1907, lot 268. Herrmann pl. iv, 11. |
| e. | | 12 | <i>SNG Blackburn</i> 589. |
| f. | 6.03 g | | Hess-Divo 308, 24 October 2007, lot 45. Künker 97, 7 March 2005, lot 526. Künker 94, 27 September 2004, lot 754. |

P17. Same die as employed with A9.

- | | | | |
|-----|--------|---|--|
| a. | 5.83 g | 5 | Manchester University Museum. <i>SNG Manchester</i> 825. Cumberland Clark 166. |
| *b. | 6.05 g | 3 | Commerce, 1989 hoard (<i>CHIX</i> , 65), inv. 4652. |
| c. | 6.07 g | 4 | Commerce, 1989 hoard (<i>CHIX</i> , 65), inv. 4653. |
| d. | 6.04 g | 3 | NFA XXXIII, 3 May 1994, lot 926. Ex commerce, 1989 hoard (<i>CHIX</i> , 65), inv. 4654. |
| e. | 6.20 g | 3 | Thessaly hoard, early 1993 (<i>CHIX</i> , 64), Lorber, <i>SNR</i> 88, 2009, 10. |
| f. | 5.80 g | | Hirsch 174, 13–16 May 1992, lot 146. |
| g. | 6.03 g | 3 | CNG Electronic Auction 222, 11 November 2009, lot 95. |

A10^{'''}. Same obverse die in latest state, with flaws in field before forehead and upper lip more developed.

P23. ΛAPI—Σ high above, I—A below, horse galloping r. Square die.

- | | | | |
|-----|--------|----|---|
| a. | 5.97 g | 9 | Thessaly hoard, early 1993 (<i>CHIX</i> , 64), Lorber, <i>SNR</i> 88, 2009, 4. |
| b. | 6.11 g | | Ponterio 146, 25 April 2008, lot 1260. |
| c. | 5.82 g | 9 | CNG Electronic Auction 235, 23 June 2010, lot 101. |
| d. | 5.76 g | 3 | Commerce, 2007 hoard, inv. 8.3. |
| e. | 6.11 g | 9 | Commerce, 2007 hoard, inv. 8.6. |
| f. | 6.07 g | 9 | Commerce, 2007 hoard, inv. 8.5. |
| g. | 5.99 g | 9 | Commerce, 2007 hoard, inv. 8.4. |
| h. | 5.94 g | 9 | Commerce, 2007 hoard, inv. X.31. |
| *i. | 6.09 g | 10 | Freeman & Sear Manhattan Sale II, 4 January 2011, lot 153. Freeman & Sear Mail Bid Sale 15, 27 June 2008, lot 68. Ex commerce, 2007 hoard, inv. X.30. |
| j. | 6.08 g | | Gorny & Mosch 199, 10 October 2011, lot 245. |

A11. Female head r., wearing pendant earring, hair confined by ampyx and sphendone, dotted border.

P20. Same die as employed with A10.

- | | | | |
|-----|--------|---|--|
| a. | 6.09 g | | Berk 74, 4 November 1992, lot 115. |
| *b. | 5.97 g | 2 | Triton XV, 3 January 2012, lot 182. CNG Electronic Auction 97, 8 September 2004, lot 33. Hess 207, 1 December 1931, lot 382. |
| c. | 6.16 g | 2 | Nomos 4 (BCD), 10 May 2011, lot 1428.3. Erroneously provenanced as the preceding lot. |
| *d. | 6.05 g | 1 | BM 1933,0214.421. Purchased from Rev. Edgar Rogers. |
| e. | 5.89 g | | BnF. <i>Traité</i> IV 695, pl. cccxcviii, 4. Gallica website ark/12148/btv1b8572422t. |
| f. | | | Platt sale (Luneau), 26 March 1922, lot 429. |

Summary

The earliest profile head drachms of Larissa are Herrmann's Groups IVa and IVc. This die study shows that they were minted in two concurrent series, i.e., on two anvils. The evident urgency of production, combined with a new obverse type of civic significance, inspires the suggestion that these coins were struck in 404 BC to finance the first Aleuad attempt to resist Lycophron of Pherae.

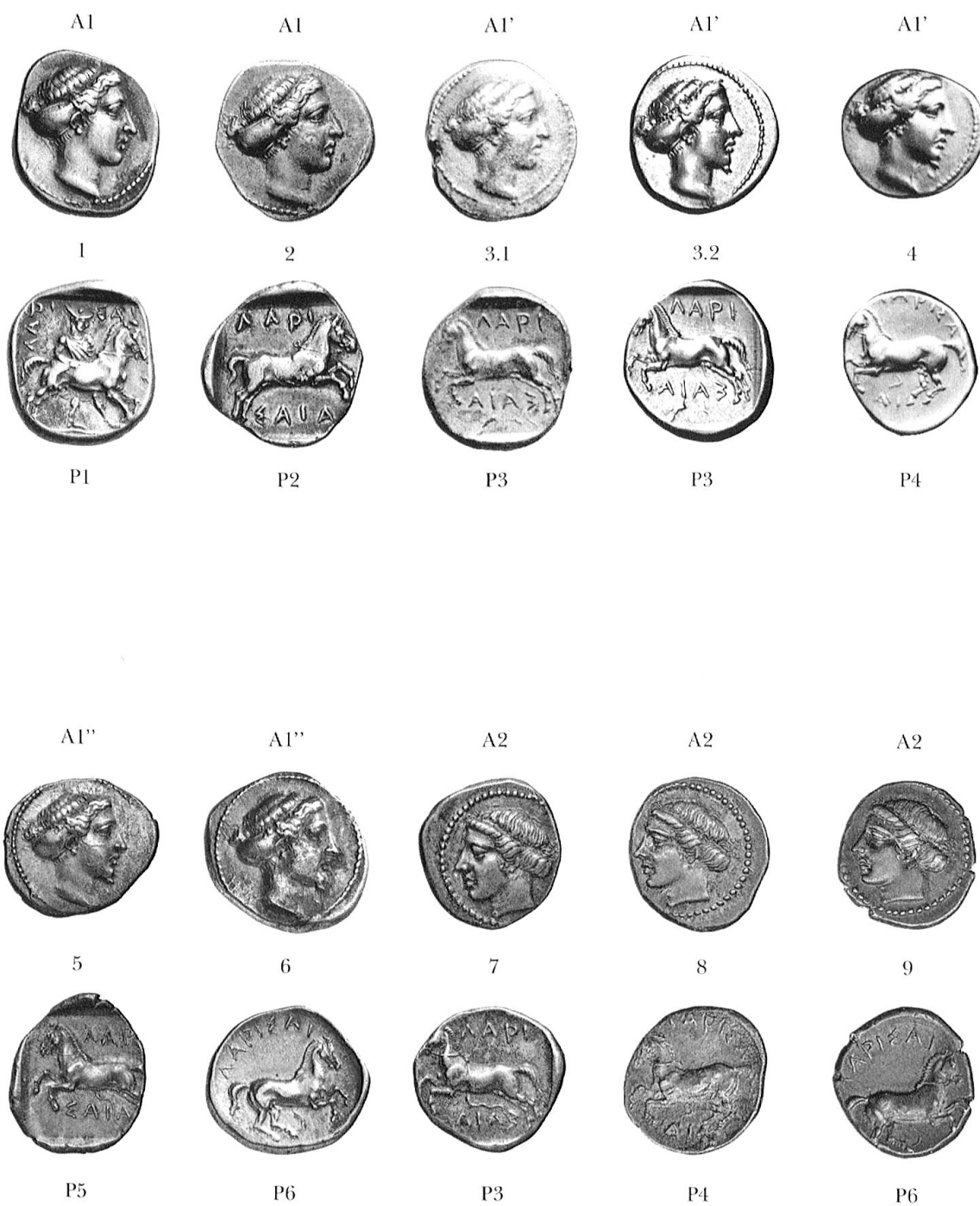
Zusammenfassung

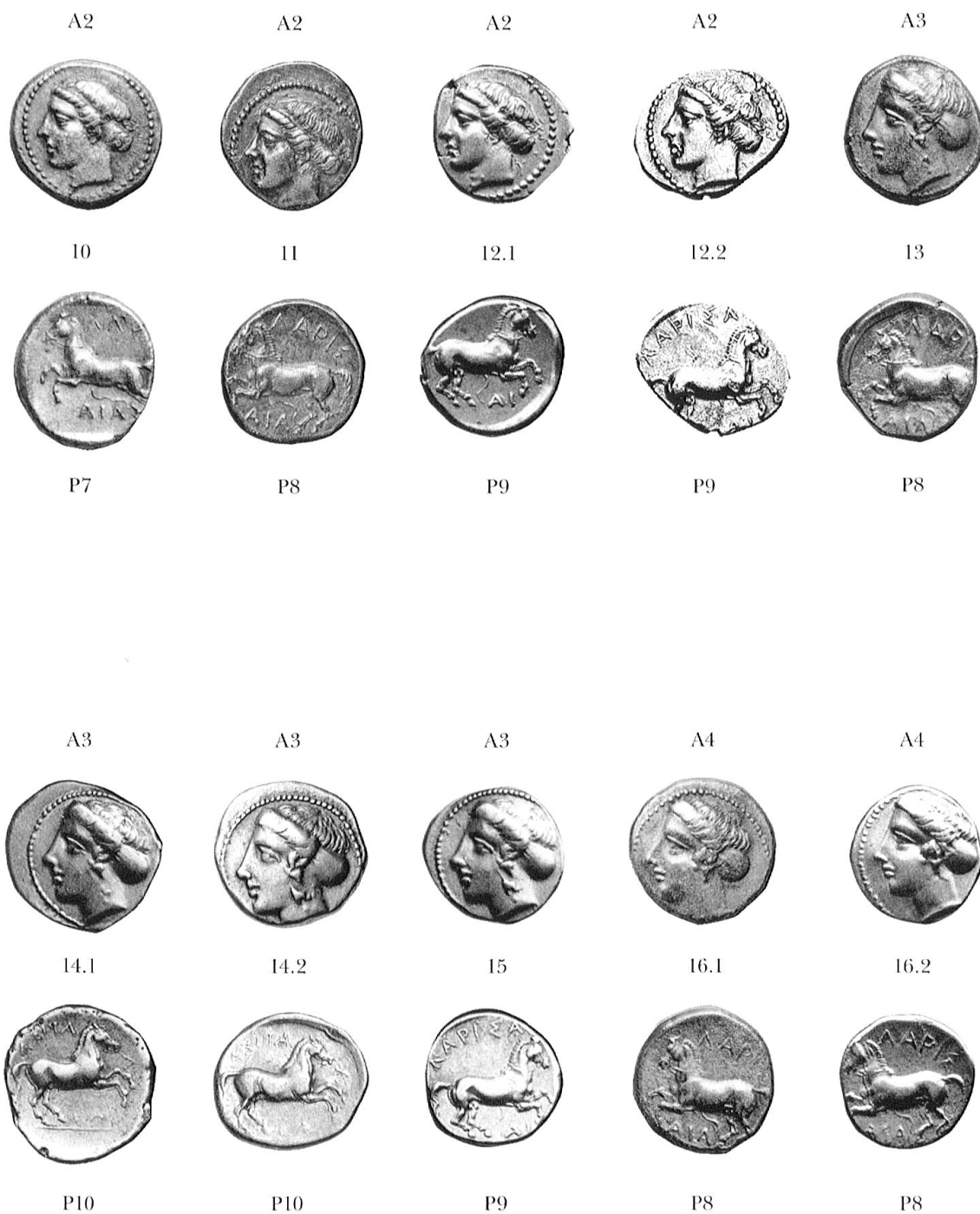
Herrmanns Gruppen IVa und IVb umfassen die frühesten Drachmen aus Larissa mit Kopf im Profil auf der Vorderseite. Die hier vorliegende Stempelstudie zeigt, dass sie in zwei zeitgleichen Serien geprägt worden sind. Die offensichtliche Dringlichkeit, mit der diese Münzen hergestellt wurden, deutet, zusammen mit der Einführung eines neuen Vorderseitentyps, darauf hin, dass die Profilkopf-Drachmen im Jahr 404 v. Chr. geprägt wurden, um den Widerstand der Aleuaden gegen Lykophron von Pherai zu finanzieren.

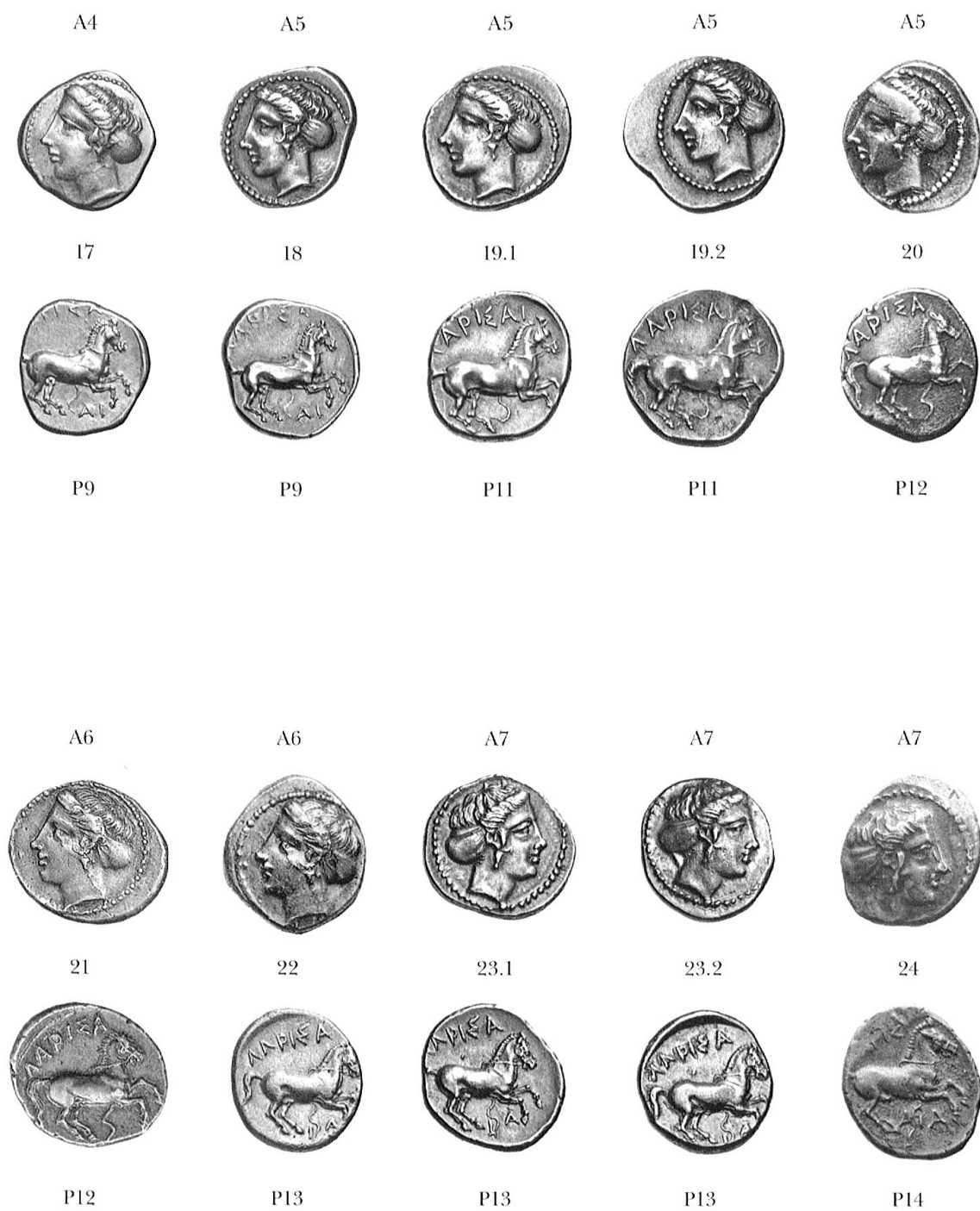
Catharine C. Lorber
 5450 Fenwood Ave
 Woodland Hills
 CA 91367 USA
 catharinelorber@hotmail.com

Photo credits

Ashmolean Museum, Oxford:	Fig. 24
Bibliothèque nationale de France:	Figs. 5, 7, 11
British Museum:	Figs. 8, 9, 21, 36.2
Classical Numismatic Group:	Figs. 2, 12.2, 14.2, 18, 19.1, 23.2, 26, 33, 36.1
Commerce, 1988 (<i>CH IX</i> , 67):	Figs. 3.1, 10, 13, 16.1, 20, 22, 31.1, 31.2
Commerce, 1989 (<i>CH IX</i> , 78):	Figs. 4, 12.1, 14.1, 15, 16.2, 28, 29.1, 29.3, 30.2, 34
Commerce, 2007:	Fig. 30.1
Freeman & Sear:	Fig. 35
Fritz Rudolph Künker:	Fig. 6
Gerhard Hirsch Nachfolger:	Fig. 3.2, 25.2
Helios Numismatik:	Fig. 29.2
Hess-Divo:	Fig. 19.2
Münzhandlung Lanz:	Fig. 27
Nomos A.G.:	Figs. 1, 23.1, 32
Roma Numismatics:	Fig. 17
Thessaly hoard, 1996 (<i>CH IX</i> , 77):	Fig. 25.1







A8



25.1

A8



25.2

A8



26

A9



27

A9



28



P15



P15



P16



P16



P17

A9



29.1

A9



29.2

A9



29.3

A9



30

A10



31.1



P18



P18



P18



P19



P20

A10



31.2



P20

A10'



32



P21

A10''



33



P22

A10'''



34



P17

A10''''



35



P23

A11



36.1



P20

A11



36.2



P20

A



P20



