

Zeitschrift: Bericht über die Tätigkeit der St. Gallischen Naturwissenschaftlichen Gesellschaft
Herausgeber: St. Gallische Naturwissenschaftliche Gesellschaft
Band: 76 (1956-1958)
Anhang: [Beilagen]

Nutzungsbedingungen

Die ETH-Bibliothek ist die Anbieterin der digitalisierten Zeitschriften auf E-Periodica. Sie besitzt keine Urheberrechte an den Zeitschriften und ist nicht verantwortlich für deren Inhalte. Die Rechte liegen in der Regel bei den Herausgebern beziehungsweise den externen Rechteinhabern. Das Veröffentlichen von Bildern in Print- und Online-Publikationen sowie auf Social Media-Kanälen oder Webseiten ist nur mit vorheriger Genehmigung der Rechteinhaber erlaubt. [Mehr erfahren](#)

Conditions d'utilisation

L'ETH Library est le fournisseur des revues numérisées. Elle ne détient aucun droit d'auteur sur les revues et n'est pas responsable de leur contenu. En règle générale, les droits sont détenus par les éditeurs ou les détenteurs de droits externes. La reproduction d'images dans des publications imprimées ou en ligne ainsi que sur des canaux de médias sociaux ou des sites web n'est autorisée qu'avec l'accord préalable des détenteurs des droits. [En savoir plus](#)

Terms of use

The ETH Library is the provider of the digitised journals. It does not own any copyrights to the journals and is not responsible for their content. The rights usually lie with the publishers or the external rights holders. Publishing images in print and online publications, as well as on social media channels or websites, is only permitted with the prior consent of the rights holders. [Find out more](#)

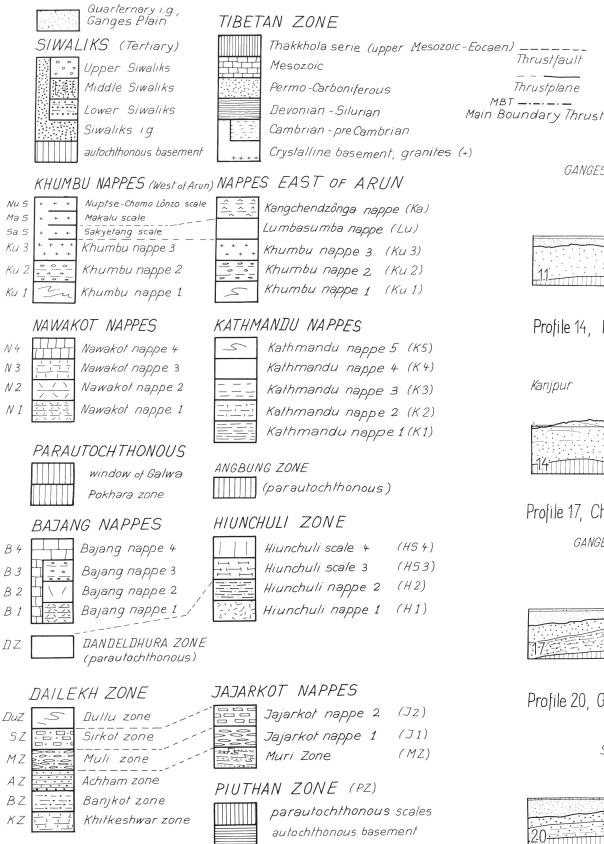
Download PDF: 05.04.2026

ETH-Bibliothek Zürich, E-Periodica, <https://www.e-periodica.ch>

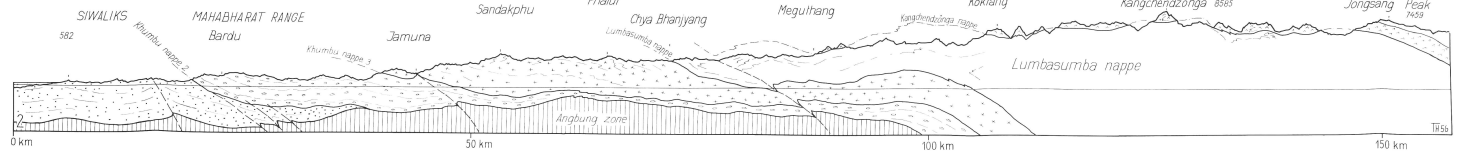
14 GEOTECTONIC PROFILES OF THE NEPAL-HIMALAYA from the Ganges Plain to the Tibetan Plateau, 1:300'000

by Toni Hagen, UNTAO

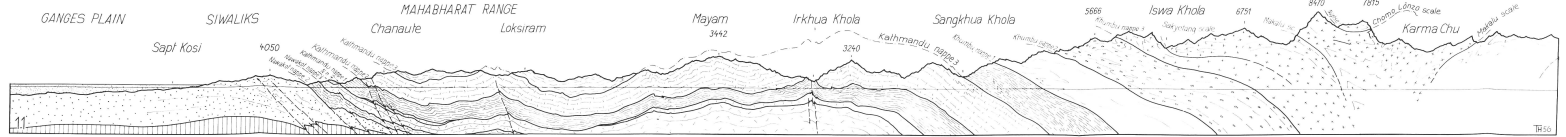
with 1 comparative profile through the Alps



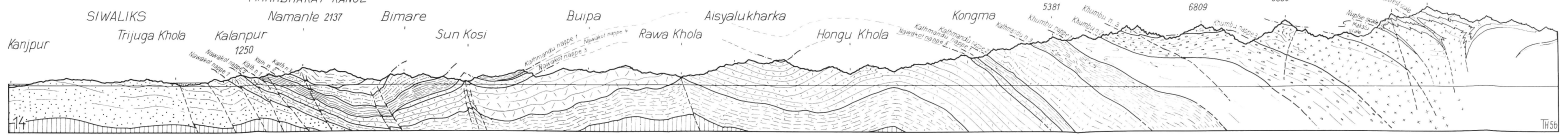
Profile 2, Kangchendzöngä



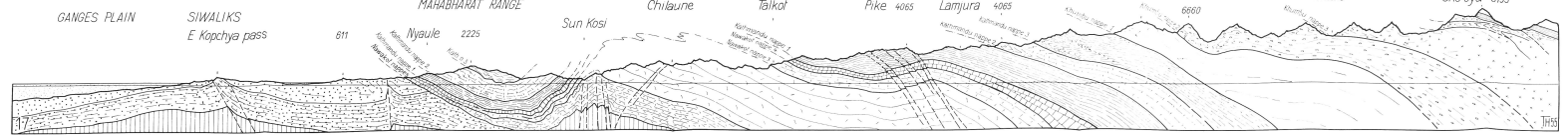
Profile 11, Makalu



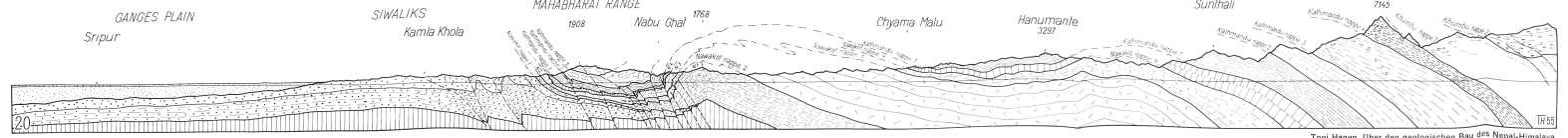
Profile 14, Mt. Everest



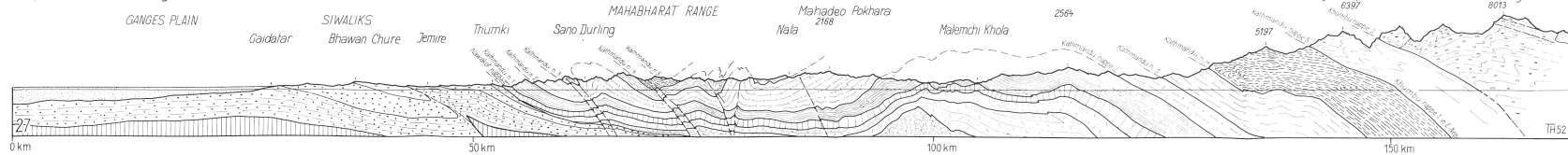
Profile 17, Cho Oyu



Profile 20, Gauri Sankar



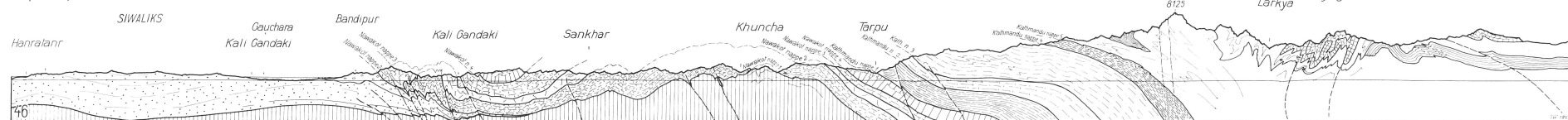
Profile 27, Shisha Pangma



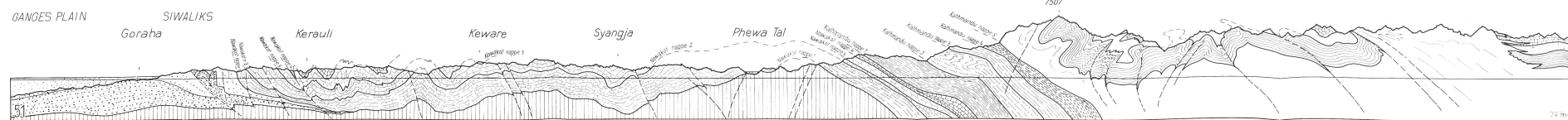
Profile 30, Kathmandu Valley



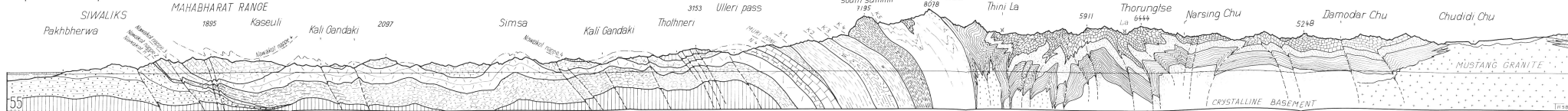
Profile 46, Manaslu



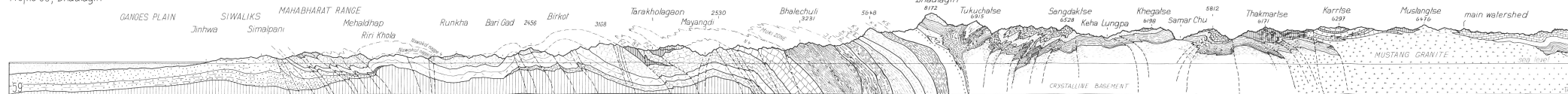
Profile 51, Annapurna Himal



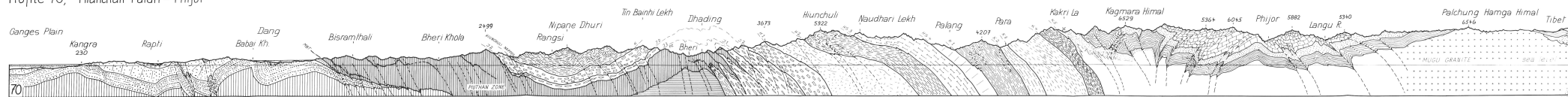
Profile 55, Annapurna



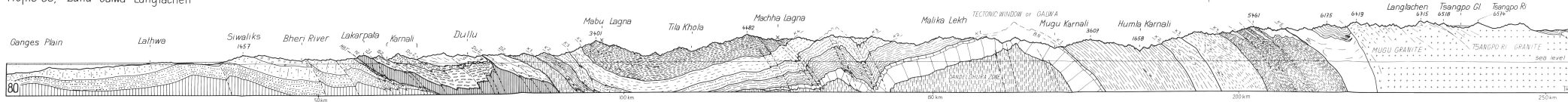
Profile 59, Dhaulagiri



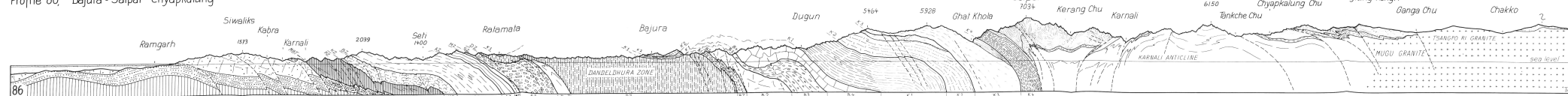
Profile 70, Hiunchuli Patan - Phijor



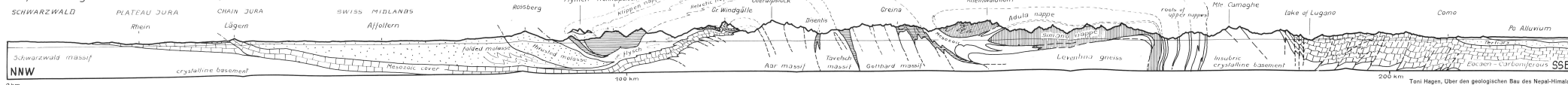
Profile 80, Dullu - Galwa - Langtachen



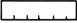
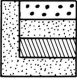




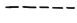
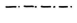

Profile 86, Bajura - Saipal - Chyapkalung

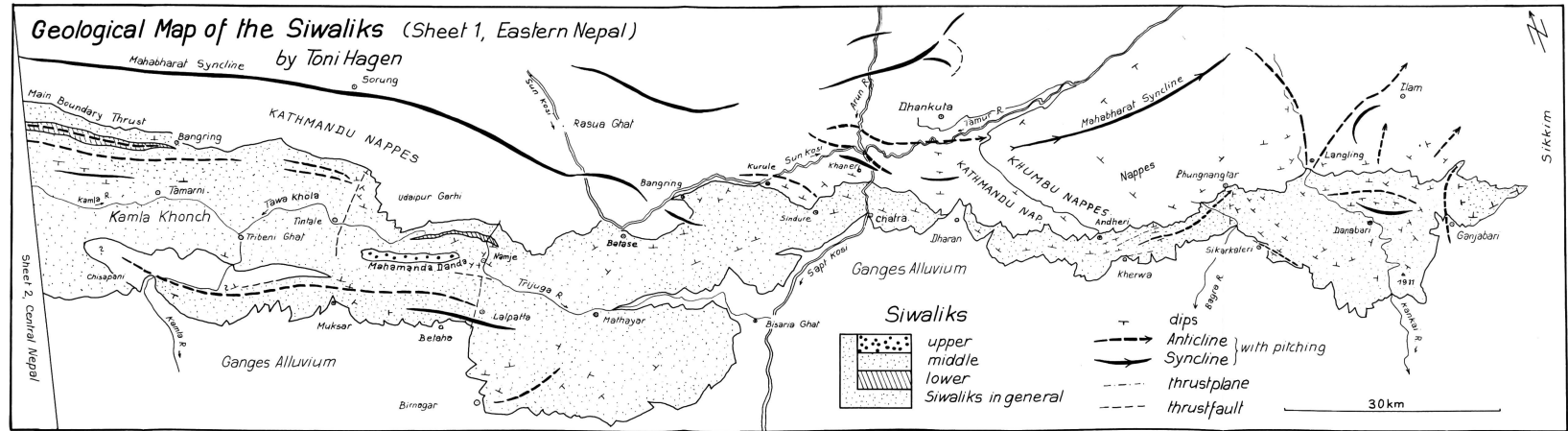


Profile through the Central Swiss Alps 1:300'000 (after "Geologische Generalkarte der Schweiz," 1956)

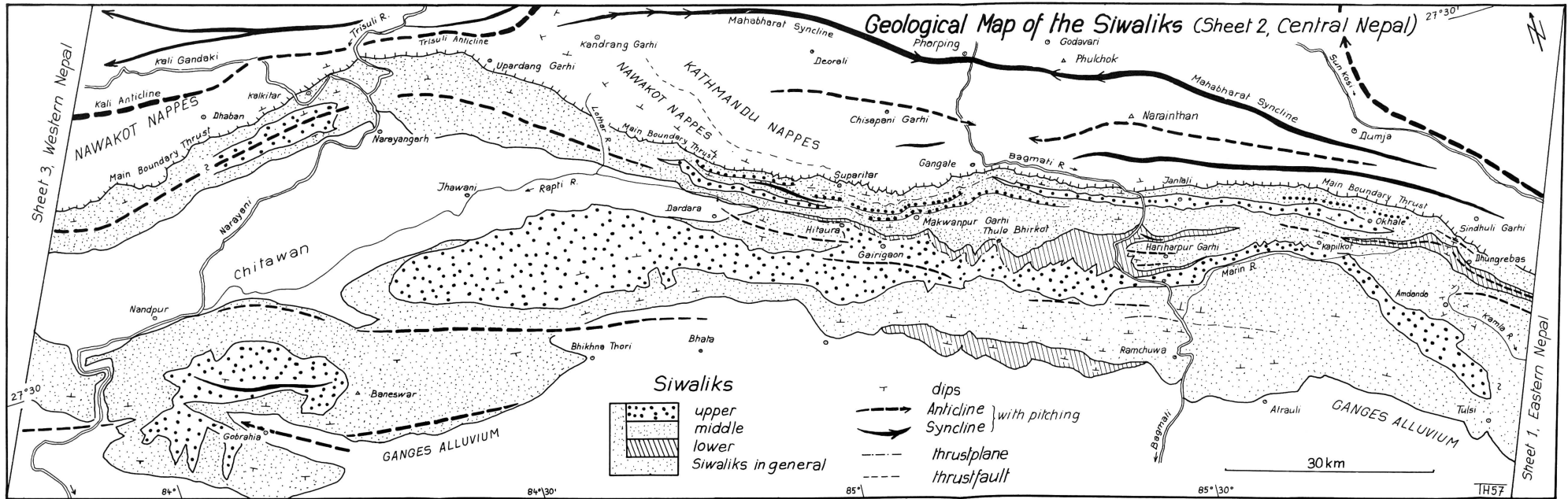


Toni Hagen, Über den geologischen Bau des Nepal-Himalaya

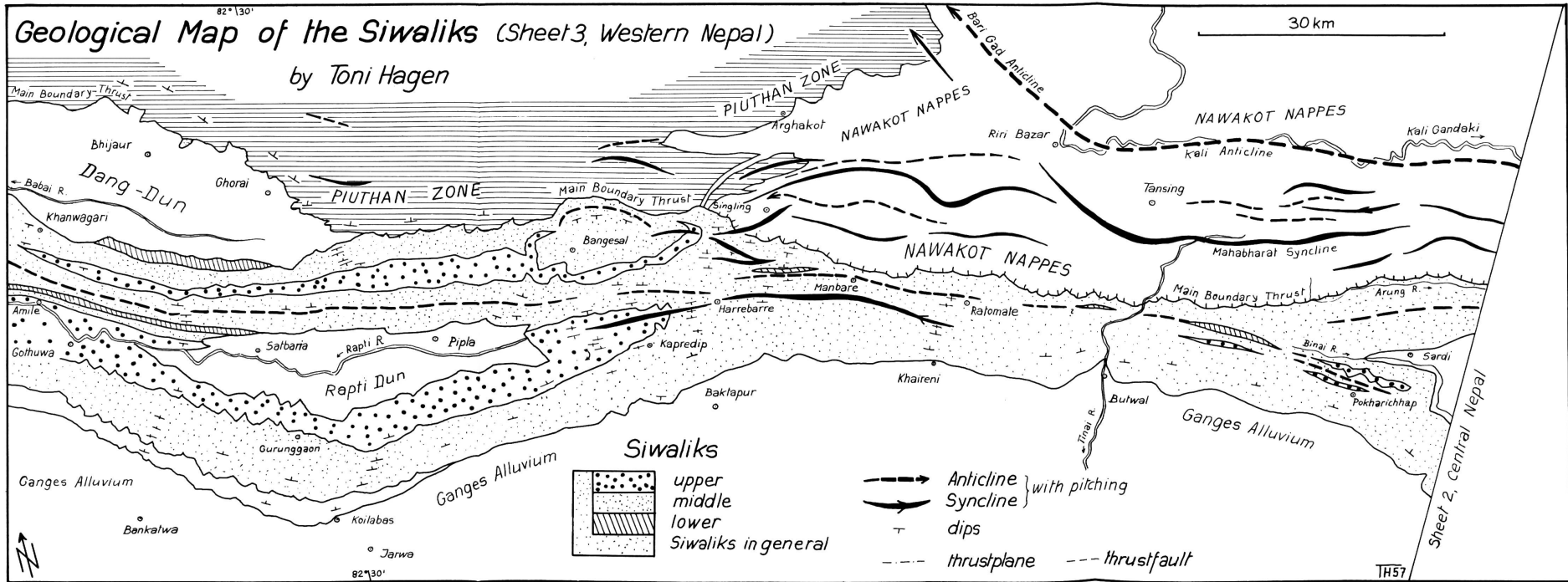
-  Übersobene Decken
-  Ober Siwaliks
Mittel Siwaliks
Unter Siwaliks
Siwaliks i. A.
-  Pliath Zone
-  Ganges Alluvium
-  Antiklinalaxe
-  Synklinalaxe
-  Verwerfung
-  Schubfläche
-  Schichtfallen



Toni Hagen, Über den geologischen Bau des Nepal-Himalaya



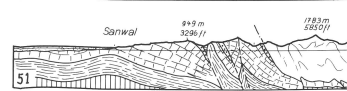
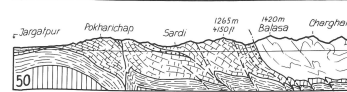
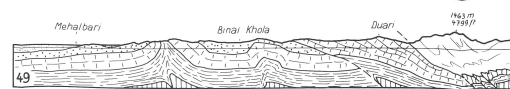
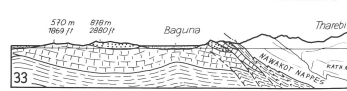
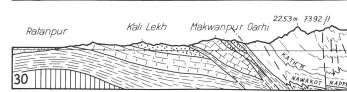
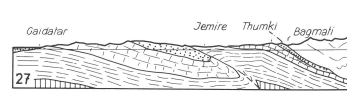
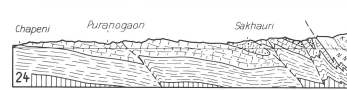
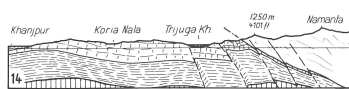
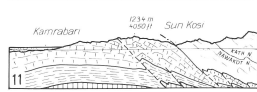
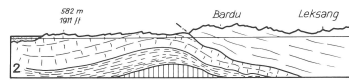
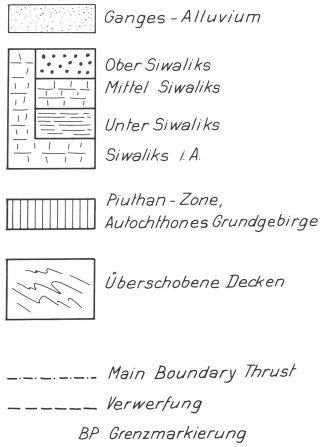
Toni Hagen, Über den geologischen Bau des Nepal-Himalaya



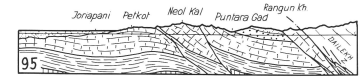
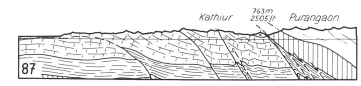
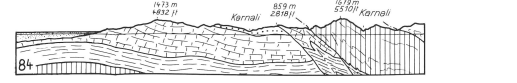
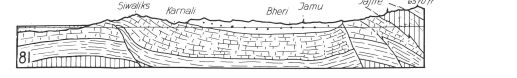
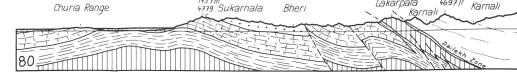
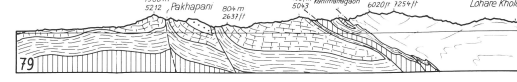
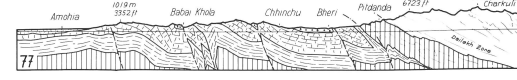
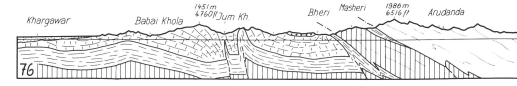
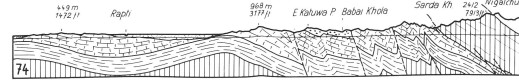
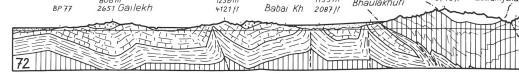
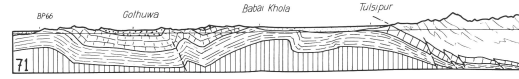
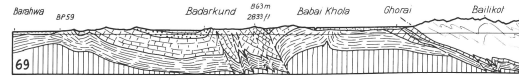
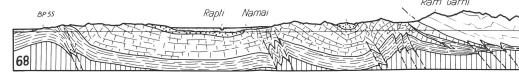
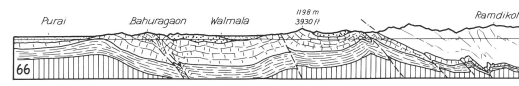
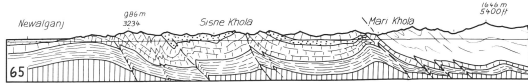
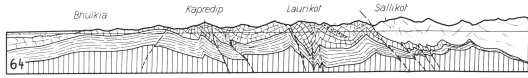
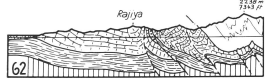
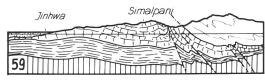
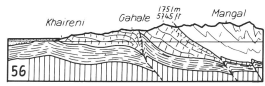
Toni Hagen, Über den geologischen Bau des Nepal-Himalaya

44 Geologische Profile durch die Siwalik-Zone in Nepal

von Toni Hagen



Toni Hagen, Über den geologischen Bau des Nepal-Himalaya



Toni Hagen, Über den geologischen Bau des Nepal-Himalaya