

New species of Sarothrias (Coleoptera, Jacobsoniidae)

Autor(en): **Slipinski, Adam / Löbl, Ivan**

Objektyp: **Article**

Zeitschrift: **Mitteilungen der Schweizerischen Entomologischen Gesellschaft = Bulletin de la Société Entomologique Suisse = Journal of the Swiss Entomological Society**

Band (Jahr): **68 (1995)**

Heft 1-2

PDF erstellt am: **25.09.2024**

Persistenter Link: <https://doi.org/10.5169/seals-402581>

Nutzungsbedingungen

Die ETH-Bibliothek ist Anbieterin der digitalisierten Zeitschriften. Sie besitzt keine Urheberrechte an den Inhalten der Zeitschriften. Die Rechte liegen in der Regel bei den Herausgebern.

Die auf der Plattform e-periodica veröffentlichten Dokumente stehen für nicht-kommerzielle Zwecke in Lehre und Forschung sowie für die private Nutzung frei zur Verfügung. Einzelne Dateien oder Ausdrucke aus diesem Angebot können zusammen mit diesen Nutzungsbedingungen und den korrekten Herkunftsbezeichnungen weitergegeben werden.

Das Veröffentlichen von Bildern in Print- und Online-Publikationen ist nur mit vorheriger Genehmigung der Rechteinhaber erlaubt. Die systematische Speicherung von Teilen des elektronischen Angebots auf anderen Servern bedarf ebenfalls des schriftlichen Einverständnisses der Rechteinhaber.

Haftungsausschluss

Alle Angaben erfolgen ohne Gewähr für Vollständigkeit oder Richtigkeit. Es wird keine Haftung übernommen für Schäden durch die Verwendung von Informationen aus diesem Online-Angebot oder durch das Fehlen von Informationen. Dies gilt auch für Inhalte Dritter, die über dieses Angebot zugänglich sind.

New species of *Sarothrias* (Coleoptera, Jacobsoniidae)

ADAM SLIPINSKI¹ AND IVAN LÖBL²

¹Muzeum i Instytut Zoologii PAN, ul. Wilcza 64, PL-00-679 Warszawa

²Muséum d'histoire naturelle, Case postale 6434, CH-1211 Genève 6

The following new species of Jacobsoniidae are described: *Sarothrias amabilis* from West Malaysia, *S. pacificus* from New Caledonia, and *S. audax* from Moluccas. A key to all species of *Sarothrias* is provided.

Keywords: Coleoptera, Jacobsoniidae, *Sarothrias*, taxonomy.

INTRODUCTION

Adequate sampling methods reveal new species even in groups notoriously known to be rare. This is nicely illustrated by the genus *Sarothrias*, a conspicuous and widely distributed jacobsoniid. Until 1978, the genus has been known only from five specimens representing two species. Since then, DAJOZ (1978), SLIPINSKI (1986), LÖBL & BURCKHARDT (1988), and POGGI (1991) have added seven species, all but *S. morokanus* POGGI from recently collected specimens. The present paper gives descriptions of additional three species. Noteworthy is also a second record of *S. indicus* DAJOZ from India, Kerala, Thekkady, Periyar W.L.S., 2.IX.1989, leg. A. RIEDEL (SMNS, MHNG).

The following acronyms indicate depositories for specimens: BPBM, Bernice P. Bishop Museum, Honolulu; MHNG, Muséum d'histoire naturelle, Geneva; NHMW, Naturhistorisches Museum, Wien; RSCW, R. SCHUH Collection, Wien; SMNS, Staatliches Museum für Naturkunde, Stuttgart; ZMPA, Muzeum i Instytut Zoologii PAN, Warszawa.

DESCRIPTIONS

Sarothrias amabilis sp.n.

Length 1.75-1.80 mm. Body brown to piceous, shiny except for areas covered with secretions. These are predominantly located at: clypeus, two longitudinal lines along frontal sides, antennomeres 1-8; anterior, posterior and irregular lateral areas of pronotum; bases, apices and fine longitudinal lines of elytra; dorsal and ventral sides of femora and tibiae; most of the ventral side.

Head: clypeus flat, rounded anteriorly; frontoclypeal suture deep and well-developed. Frontal and vertical punctures as large as eye facets, slightly elongated, irregular. Antennal scape 0.14-0.16 mm long; pedicel distinctly wider than following five segments. Antennomeres 2-11, each with a whorl of squamiform setae; setae on terminal segment approximately twice as long as those on 2nd; antennomeres 9-11 without secretions, with both, normal and squamiform setae.

Pronotum 1.5-1.6 x as long as wide, without setae laterally; median groove narrow, extending from basal 1/4 to apical 1/10 of pronotum. Punctures on disc similar to those on head.

Elytra (Fig. 1) 1.7-1.8 x as long as wide and about 1.9 x as long as pronotum, widest near middle. Basal bulge well-developed, with 3 subbasal impressions. Each elytron with 6 rows of punctures visible from above: rows 1-3, 7 and 8 impressed or grooved on their entire length, remaining rows consisting of separate punctures. Row 1 parallel to suture, ending subapically; 2 and 3 joined at about apical third to form an opaque line; rows 4-6 weakly impressed at base only, disappearing at apical half; row 7 entirely grooved, weakly keeled and with secretions apically. Elytral setae irregularly arranged near apex on row 3 (4-5 setae along) and single seta present near each basal impression.

Ventral side: metasternum with median impression gradually deepened toward metacoxae and laterally not clearly delimited; secretions forming a pair of medio-apical stripes.

Holotype male: "Malaysia: Pahang; Tioman Island Kg. Tekek Umgeb.; 15.-26.7.1992 (13); leg. R. SCHUH" (MHNG). Paratypes: 1 as above (MHNG), 5 with same data as holotype but (7) (MHNG, NHMW, RSCW, ZMPA).

Sarothrias pacificus sp.n.

Length 2.0 - 2.4 mm. Body brown to piceous, shiny except for areas covered with secretions. These located predominantly at: clypeus, two longitudinal lines along frontal sides, antennomeres 1-8; anterior, posterior and irregular lateral areas of pronotum; bases, apices, and fine longitudinal lines of elytra; dorsal and ventral sides of femora and tibiae; most of ventral surface of body.

Head: clypeus flat, rounded anteriorly; fronto-clypeal suture deep and well-developed. Frons with two lateral and two admedian lines, the latter converging anteriorly. Frontal and vertical punctures not visible except for those arranged in "lines". Antennal scape 0.17-0.20 mm long; pedicel distinctly wider than following five segments. Antennomeres 2-10, each with a whorl of squamiform setae of approximately similar length on all antennomeres; apex of scape with a few short squamiform setae; antennomeres 9-11 without secretions, 9 and 10 with both normal and squamiform setae; terminal antennomere with normal setae and a few long apical bristles.

Pronotum 1.4-1.5 x as long as wide, with 3 setae on each side. Median groove narrow, extending from basal 1/8 to almost anterior margin, with wide and deep pit near base. Lateral parts in anterior third with irregular transverse zigzag lines covered with secretions; a regular transverse impression near base. Punctures on disc irregular and about as large as eye facets, usually semi-connected in chains or incorporated into irregular lines.

Elytra (Figs 2, 3) 1.5-1.6 x as long as wide and about 1.9-2.0 x as long as pronotum, widest near middle. Basal bulge well-developed with 3 subbasal impressions. Each elytron with 6 rows of punctures visible from above. Rows 1-2 impressed or grooved only in apical third where they are opaque with secretions; rows 3-5 entirely punctated; 6 very finely impressed on entire length with secretions near humerus and apical half; 7 entirely impressed with secretions in apical half; 9 distinctly subcarinate, entire. Squamiform setae present near humeral impressions, and along rows 2 and 6 apically.

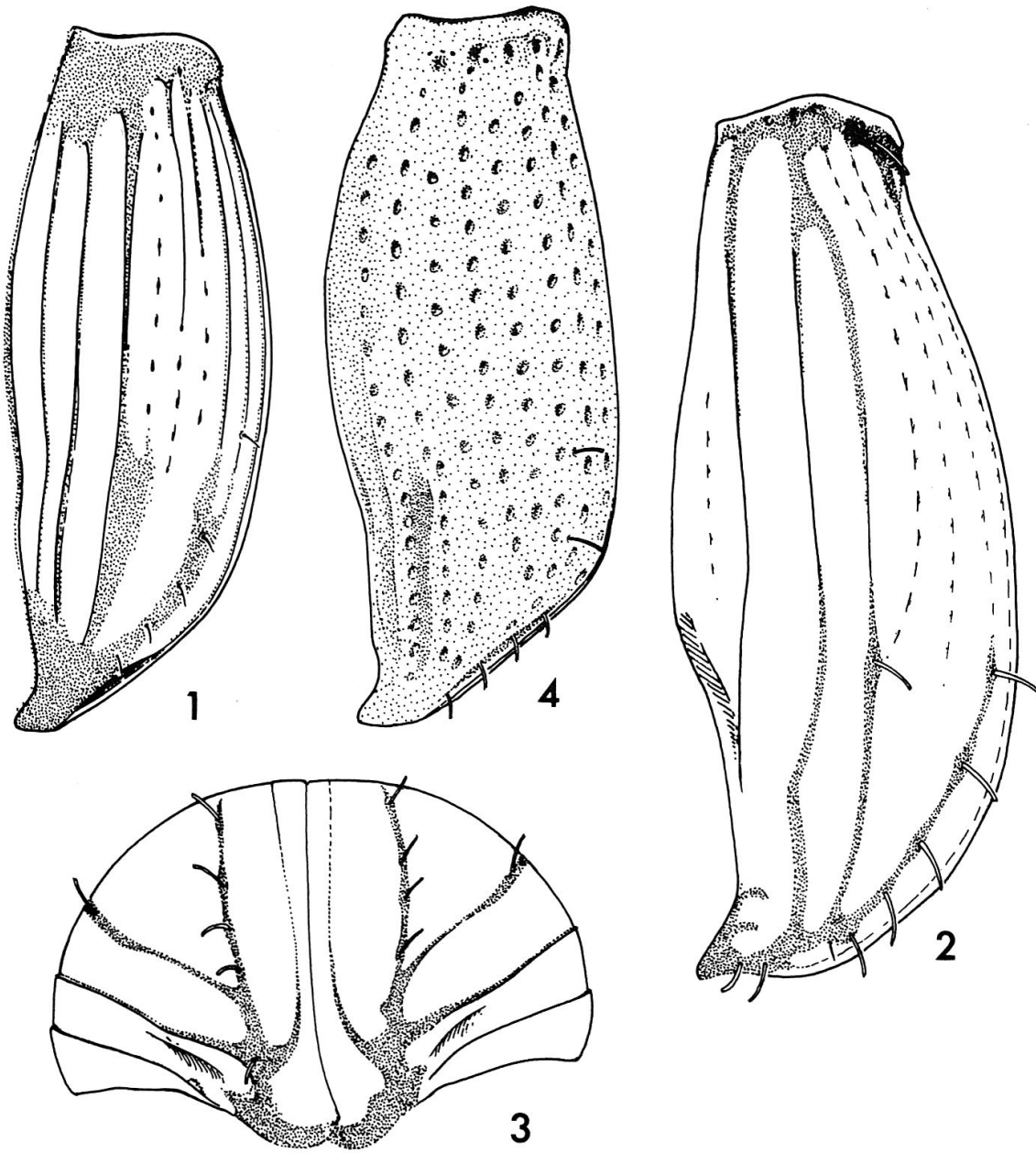


Fig. 1: *Sarothrias amabilis* sp.n., elytron in lateral view; Figs 2 and 3: *Sarothrias pacificus* sp.n., elytron in lateral view (2) and elytra in apical view (3); Fig. 4: *Sarothrias audax* sp.n., elytron in lateral view.

Ventral side: metasternum with median impression in basal $\frac{1}{3}$ laterally delimited by weak ridges.

Holotype female: "New Caledonia, Mt. Koghi, 400-600m, ii.1973, NLH KRAUSS" (BPBM). Paratypes: same data as holotype (2, BPBM; 1, MHNG; 1, ZMPA).

Sarothrias audax sp.n.

Length 1.65-2.10 mm. Body brown; opaque except for the shiny narrow stripe along the elytral suture.

Head: clypeus flat, rounded anteriorly; fronto-clypeal suture deep and well-developed. Frontal sides slightly raised; frontal and vertical punctures irregular, approximately as large as eye facets, 0.2-1.2 diameters apart. Antennal scape 0.13-0.15 mm long; pedicel relatively stout, only slightly shorter than scape, wider than the following five segments; antennomere III distinctly narrower and shorter than II. Antennomeres 2-11, each with a whorl of squamiform setae; setae approximately of similar length on all antennomeres; apex of scape with a few short squamiform setae; antennomeres 10-11 without secretions, with both normal and squamiform setae.

Pronotum 1.32-1.45 x as long as wide, without sublateral setae. Median groove sharply delimited, extending from basal $\frac{1}{3}$ to apical $\frac{1}{6}$ of pronotum. Punctures on disc about as large as those on head, usually 0.5-1.5 diameters apart, near anterior margin larger and more widely spaced than those near middle.

Elytra (Fig. 4) 1.7-1.8 x as long as wide, and about 2.0-2.1 x as long as pronotum, widest near middle. Basal bulge well-developed with 3 subbasal impressions. Each elytron with 8 rows of punctures; striae punctures approximately twice as large as those in middle of pronotum. Squamiform setae present near humeral impressions, and irregularly near apical part.

Ventral side: mesosternal process flattened between coxae, metasternum with median impression weak and laterally not clearly delimited except for near the coxae.

Holotype male: "INDO: Moluc F911133 Tanimbar Isl.: Yamdera Sangliat Krawain, 16.IX.1991, leaf litter, AGOSTI" (MHNG). Paratypes: 5 as above (MHNG, ZMPA).

KEY TO SPECIES OF *SAROTHRIAS*

1. Elytra entirely covered by secretions, except for the narrow stripe along the suture; none of the elytral rows grooved or subcarinate 2
- Elytra partly shiny, leaving secretions along intervals, bases and apices of elytra; at least one row impressed or grooved 6
2. Terminal antennomere with a whorl of squamiform setae 3
- Terminal antennomere without a whorl of squamiform setae 4
3. Lateral portion of pronotum with 2-3 short squamiform setae. Antennomere II 2 x as long as III. Mesosternal process raised between coxae. Sabah
..... *S. crowsoni* LÖBL & BURCKHARDT
- Lateral portion of pronotum without setae. Antennomere II 1.4 x as long as III. Mesosternal process flat between mesocoxae. Moluccas *S. audax* sp.n.

4. Epipleural keel of elytra extending more towards base than lateral keel 5
 – Epipleural and lateral keels of elytra ending at about the same level. New Britain *S. bournei* SLIPINSKI
5. Median depression of metasternum laterally not clearly delimited, narrowing towards apex beyond the middle, matt, covered in secretions. Seychelles
 *S. eximius* GROUVELLE
 – Median depression of metasternum laterally well delimited, gradually narrowing towards apex, apical portion shiny, free from secretions. Fiji
 *S. fijianus* LÖBL & BURCKHARDT
6. Secretions on elytra forming longitudinal stripes which are separated by shiny intervals. Southern India *S. indicus* DAJOZ
 – Secretions of elytra different 7
7. Pronotum with 2-3 squamiform setae laterally 8
 – Pronotum without setae 9
8. Elytral secretions forming apical drop-shaped loop. Antennomere XI with squamiform setae. Sumatra *S. dimerus* (HELLER)
 – Elytral secretions strongly reduced (Figs 2,3). Antennomere XI without squamiform setae *S. pacificus* sp.n.
9. Elytron with row 5 entirely deeply impressed, merged with 4 apically. Queensland *S. lawrencei* LÖBL & BURCKHARDT
 – Elytron with row 5 at most impressed near base, then continued as separate punctures, not joined to 4 10
10. Elytron with row 3 weakly impressed at base, then continued as a weak row of separate punctures, not joined with row 2. Papua New Guinea
 *S. papuanus* SLIPINSKI
 – Elytron with row 3 entirely impressed and joined with 2 11
11. Rows 2 and 3 joined very close to elytral apex, much further than the last point of row 5, and apparently behind a level of metacoxae. Papua New Guinea ...
 *S. morokanus* POGGI
 – Rows 2 and 3 joined far before the level of metaxocae and at the level of last puncture of row 5. West Malaysia *S. amabilis* sp.n.

ACKNOWLEDGEMENTS

Mrs N. LAVOYER assisted with the drawings. The material was made available by W. SCHAWALLER (Stuttgart), R. SCHUH (Wien) and G. A. SAMUELSON (Honolulu). D. AGOSTI (Zürich - New York) collected beetles on our behalf.

REFERENCES

- BURCKHARDT, D. & LÖBL, I. 1990. Redescription of *Jacobsonium dimerum* HELLER 1926, member of the rare tropical Indo-Australian genus *Sarothrias* GROUVELLE 1919 (Coleoptera Jacobsoniidae). *Tropical Zool.* 3: 237-241.
- DAJOZ, R. 1978. Une espèce nouvelle de l'Inde de *Sarothrias* GROUVELLE (Coléoptères, Sarothriidae). *Bull. mens. Soc. linn. Lyon*, 47: 322-324.
- LÖBL, I. & BURCKHARDT, D. 1988. Revision der Gattung *Sarothrias* mit Bemerkungen zur Familie Jacobsoniidae (Coleoptera). *Stuttgarter Beitr. Naturk. Ser. A (Biologie)*, 442: 1-23.
- POGGI, R. 1991. Descrizione di una nuova specie papuana del genere *Sarothrias* GROUVELLE (Col. Jacobsoniidae). *Annali Mus. Civ. Stor. naturale "G. Doria"*, 88: 677-683.
- SLIPINSKI S.A. 1986. Description of two new species of *Sarothrias* GROUVELLE (Coleoptera, Jacobsoniidae). *Revue suisse Zool.* 93: 59-62.

(received December 20, 1994; accepted January 19, 1995)