

Objekttyp: **Advertising**

Zeitschrift: **Parkett : the Parkett series with contemporary artists = Die Parkett-Reihe mit Gegenwartskünstlern**

Band (Jahr): - **(2008)**

Heft 82: **Collaborations Louise Bourgeois, Pawel Althamer, Rachel Harrison**

PDF erstellt am: **21.09.2024**

### **Nutzungsbedingungen**

Die ETH-Bibliothek ist Anbieterin der digitalisierten Zeitschriften. Sie besitzt keine Urheberrechte an den Inhalten der Zeitschriften. Die Rechte liegen in der Regel bei den Herausgebern. Die auf der Plattform e-periodica veröffentlichten Dokumente stehen für nicht-kommerzielle Zwecke in Lehre und Forschung sowie für die private Nutzung frei zur Verfügung. Einzelne Dateien oder Ausdrucke aus diesem Angebot können zusammen mit diesen Nutzungsbedingungen und den korrekten Herkunftsbezeichnungen weitergegeben werden. Das Veröffentlichen von Bildern in Print- und Online-Publikationen ist nur mit vorheriger Genehmigung der Rechteinhaber erlaubt. Die systematische Speicherung von Teilen des elektronischen Angebots auf anderen Servern bedarf ebenfalls des schriftlichen Einverständnisses der Rechteinhaber.

### **Haftungsausschluss**

Alle Angaben erfolgen ohne Gewähr für Vollständigkeit oder Richtigkeit. Es wird keine Haftung übernommen für Schäden durch die Verwendung von Informationen aus diesem Online-Angebot oder durch das Fehlen von Informationen. Dies gilt auch für Inhalte Dritter, die über dieses Angebot zugänglich sind.

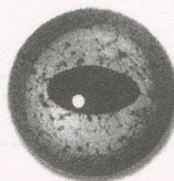


# VAN DYKE'S REPTILE Eyes

Note: When ordering reptile eyes keep in mind the shape of the pupil often depends on the amount of light entering the eye.

### Color & Style Guide

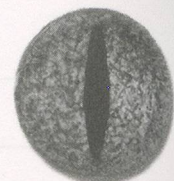
Puff Adder	Slit	Gold
Gecko	Slit	Dk. Chestnut
Am. Alligator	Slit	Sable
Nile Crocodile	Slit	Gold/Olive
King Cobra	Slit	Dk. Chestnut
Coral Snake	Slit	Poppy
Black Mamba	Slit	Dk. Chestnut
Rattlesnake	Slit	Dk. Chestnut
Snapping Turtle	Rnd	Copper
Green Turtle	Rnd	Avocado
Snake-Neck'd Turt.	Rnd	Gold
Red-Eared Slider	Rnd	Olive
North Am. Frog	Oval	Copper
Iguana	Oval	Copper
Marsupial Frog	Oval	Copper
Gila Monster	Oval	Sable
Midwife Toad	Oval	Gold
Cane Toad	Oval	Sable
Paradoxical Frog	Oval	Avocado



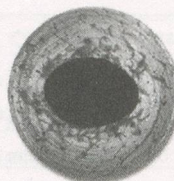
Copper



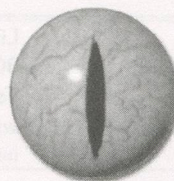
Avocado



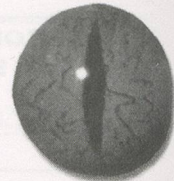
Olive



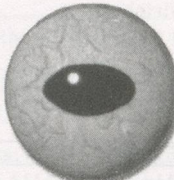
Gold



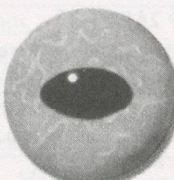
Poppy



Sable



Poppy



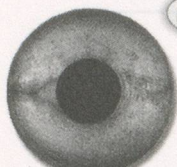
Avocado



Sable

### Round Pupil

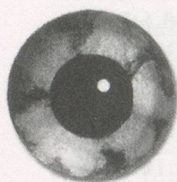
Item Number	Size in MM	RVRP Pair NoWire
108017	5	4.39
105321	6	4.39
109122	7	4.49
107733	8	4.59
102845	9	4.59
104350	10	4.69
106548	11	4.79
103912	12	5.49
109400	14	6.39
108875	16	6.99
105213	18	7.39
107424	20	7.79
102555	22	7.99
104909	24	8.19
106118	26	8.29
103640	28	8.59
109327	30	9.29
108452	32	10.59
105739	34	11.59
107803	36	12.09



Gold



Olive



Avocado



Copper

To Order Please Specify:

- 1 Color
- 2 Base Diameter
- 3 BM Catalog Code

### Oval Pupil

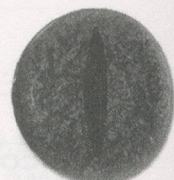
Item Number	Size in MM	RVOP Pair No Wire
109009	5	4.39
103122	6	4.39
109121	7	4.49
106234	8	4.59
104647	9	4.59
102898	10	4.69
107076	11	4.79
105811	12	5.49
108936	14	6.39
109335	16	6.99
103700	18	7.39
106529	20	7.79
104115	22	7.99
102404	24	8.19
107218	26	8.29
105336	28	8.59
108610	30	9.29
109529	32	10.59
103449	34	11.59
106758	36	12.09

### Slit Pupil

Item Number	Size in MM	RVSP Pair No Wire
102086	5	4.39
109101	6	4.39
109124	7	4.49
104328	8	4.59
106117	9	4.59
103339	10	4.69
108275	11	4.79
105410	12	5.49
107013	14	6.39
102844	16	6.99
109522	18	7.39
104440	20	7.79
106316	22	7.99
102003	24	8.19
103611	26	8.29
108242	28	8.59
105420	30	9.29
107073	32	10.59
102877	34	11.59
107105	36	12.09



Gold

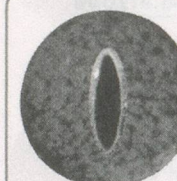


Dk Chestnut



Wheat

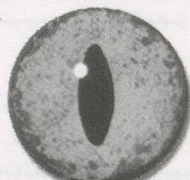
### Competition Eye



Size In MM	Price Pair
5	5.59
6	5.59
7	5.69
8	5.79

To Order Please Specify: 1 Color 2 Base Diameter 3 BM Catalog Code

### Alligator Flat Backed Slit Pupil



Item Number	Size in MM	RVSP Pair No Wire	Item Number	Size in MM	RVSP Pair No Wire
0100117	5	2.99	01001384	22	9.99
0100197	4	2.99	01001690	24	9.99
0100138	5	2.99			
0100180	6	2.99			
01001979	7	2.59	01001471	22	4.89
01001454	8	2.59	01001262	24	5.29
01001267	9	2.99	01001775	26	5.89
010117	10	2.99	100167	28	6.69
010157	11	2.99	100188	30	7.39
010185	12	2.99	100190	32	8.49
01001138	14	3.39	01001907	34	10.09
01001909	16	3.79	01001748	36	11.19

### Flexible White Easi-I-Set Capsules



#### EASI-I-SETS FOR FISH

Sizes listed are the base diameters.

Prices do not include the eyes.

With the use of fill material such as clay, paper mache or regular alginate/carbonate Dykes fish can be used with good results. Complete directions included with each order.

Item No.	Base Size	Price
BM-0151380	14mm	.25 pair
BM-0151382	16mm	.25 pair
BM-0151384	20mm	.35 pair
BM-0151386	22mm	1.30 pair

### Glass Eye Fish Assortments

Value Deal... SAVE!

Assortment includes 1 pair each 14mm, 16mm, 18mm, 20mm General Use, 1 pair 20mm Largemouth Bass, 1 pair 18mm Bluegill, 1 pair 18mm Walleye.

BM-01463421 - 24 kt Gold ..... 27.29  
 BM-01463422 - Enamel Back ..... 24.99

RACHEL HARRISON IS REPRESENTED BY GREENAFTAL, NEW YORK



# MARK DI SUVERO

MAY 9 – JUNE 534 WEST 21ST STREET

# RUDOLF STINGEL

MAY 6 – MAY 31 465 WEST 23RD STREET

# DONALD JUDD

rare woodcuts

MAY 2 – MAY 31 521 WEST 21ST STREET

# PAULA COOPER GALLERY

534 WEST 21ST STREET NEW YORK NY 10011 212 255 1105 [WWW.PAULACOOPERGALLERY.COM](http://WWW.PAULACOOPERGALLERY.COM)





LOUISE BOURGEOIS  
SEPTEMBER-OCTOBER 2008  
CHEIM & READ

LB





**Katharina Fritsch**  
Matthew Marks Gallery



# GABRIEL OROZCO

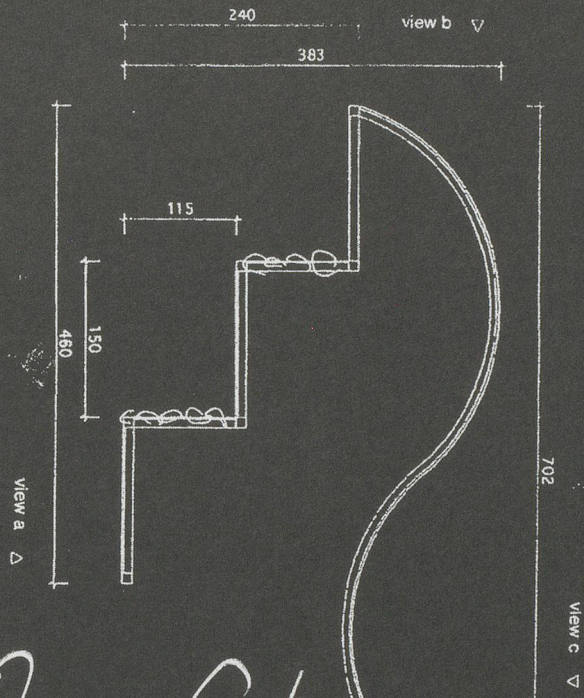
MAY 6 – JUNE 14, 2008

MARIAN GOODMAN GALLERY

24 WEST 57TH STREET NEW YORK, NY 10019

TEL: 212-977-7160 FAX: 212-581-5187 [WWW.MARIANGOODMAN.COM](http://WWW.MARIANGOODMAN.COM)





Dan Graham  
for Hansen and  
with April show



MARC JACOBS

VICTORIA BECKHAM PHOTOGRAPHED BY JUERGEN TELLER







# IDLE YOUTH

June 26 to August 15, 2008

Curated by Russell Ferguson

ROY ARDEN  
MIKE DISFARMER  
MARI EASTMAN  
THOMAS EGGERER  
KIRSTEN EVERBERG  
RODNEY GRAHAM  
JONATHAN HERNANDEZ  
LARRY JOHNSON  
NATHAN MABRY  
CATHERINE OPIE  
MICHAEL QUEENLAND  
GEORGE SHAW  
KERRY TRIBE  
MARTIN WONG

AND OTHERS...

GLADSTONE GALLERY

515 WEST 24 STREET NEW YORK 10001 TEL 212 206 9300 GLADSTONEGALLERY.COM



## LONDON

6 Haunch of Venison Yard  
off Brook Street  
London W1K 5ES  
United Kingdom

T+ 44 (0) 20 7495 5050  
F+ 44 (0) 20 7495 4050  
london@haunchofvenison.com  
www.haunchofvenison.com

### Home Lands – Land Marks: Contemporary Art from South Africa

31 May – 5 July 2008

**Mat Collishaw**

11 July –  
31 August 2008

**Anthony Goicolea**

5 September –  
4 October 2008



## BERLIN

Heidestrasse 46  
10557 Berlin  
Germany

T+ 49 (0) 30 39 74 39 63  
F+ 49 (0) 30 39 74 39 64  
berlin@haunchofvenison.com  
www.haunchofvenison.com

**Richard Long**

14 June –  
6 September 2008

**Mark Alexander**

September 2008



HAUNCH OF VENISON LONDON

6 Haunch of Venison  
off Brook Street  
London W1K 5ES  
United Kingdom

## ZÜRICH

Lessingstrasse 5  
8002 Zürich  
Switzerland

T+ 41 (0) 43 422 8888  
F+ 41 (0) 43 422 8889  
zurich@haunchofvenison.com  
www.haunchofvenison.com

**Jitish Kallat**

31 May –  
2 August 2008

**Daniele Buetti**

30 August –  
11 October 2008



T+ 49 (0) 30 39 74 39 63  
F+ 49 (0) 30 39 74 39 64  
berlin@haunchofvenison.com  
www.haunchofvenison.com

HAUNCH OF VENISON

HAUNCH OF VENISON ZÜRICH





G A L E R I A

■ H E L G A D E A L V E A R

DR. FOURQUET 12, 28012 MADRID. TEL:(34) 91 468 05 06 FAX:(34) 91 467 51 34  
e-mail:galeria@helgadealvear.com www.helgadealvear.com

May 27 – July 19

## **Extraordinary Rendition**

Group show including works by

**James Casebere**

**Elmgreen & Dragset**

**Alicia Framis**

**Santiago Sierra**

June 4 – 8

## **Art 39 Basel**

Hall 2.1 Stand V 5

November 21, 2008–March 15, 2009

## **“Helga de Alvear and Harald Falckenberg in dialogue”**

Sammlung Falckenberg / Phoenix Kulturstiftung, Hamburg



# ANTONI TÀPIES

ARBEITEN AUF PAPIER

24. Mai – 19. Juli 2008

FOCUS Photographie:

**ARNOLD ODERMATT und DANIEL SCHWARTZ**

26. Juli – 13. September 2008

**GALERIE LELONG ZÜRICH**

Predigerplatz 10–12, CH-8001 Zürich, Di–Fr 11–18, Sa 10–16 h  
Tel.: +41-44-251 11 20, Fax: +41-44-262 52 85  
galerie-lelong@bluewin.ch, www.galerie-lelong.com

ART BASEL 3.– 8. Juni, Stand S 3 Halle 2.0



# SANNA KANNISTO

May - July 2008

GALERIE WILMA TOLKSDORF  
HANAUER LANDSTRASSE 136  
60314 FRANKFURT AM MAIN  
TELEFON +49 69 43 05 94 27  
www.wilmatolksdorf.de  
fra@wilmatolksdorf.de

# AXEL HÜTTE

## Fog and Fire

May - June 2008

GALERIE WILMA TOLKSDORF BERLIN  
ZIMMERSTRASSE 88 - 91, 10117 BERLIN  
TELEFON +49 30 2005 8812  
www.wilmatolksdorf.de  
office@wilmatolksdorf.de



# JOHN ARMLEDER

PAINT HAPPENS

JUNE - JULY

GALERIE ANDREA CARATSCH WALDMANNSTRASSE 8 CH-8001 ZÜRICH  
TEL +41-44-272 5000 FAX +41-44-272 5001 WWW.GALERIECARATSCH.COM



# *Laurie Simmons*

## *in and around the house*

The Complete Early Black and White Photographs 1976-78

17 May - 28 June

Fully Illustrated Catalogue Available

### **CAROLINA NITSCH PROJECT ROOM**

Project Room 534 West 22 Street New York 212 645 2030

Gallery 537 Greenwich Street New York 212 463 0610

[www.carolinanitsch.com](http://www.carolinanitsch.com)



**BEIJING**

April 26 – August 24, 2008

**LI ZHANYANG**

'Rent' – Rent Collection Yard

Catalogue available

April 22 – August 24, 2008

**NOT VITAL**

"Tongue"

Catalogue available

September 6 – October 26, 2008

**MENG HUANG**

"And What do you Think? Landscapes"

Catalogue available

**LUCERNE**

May 17 – July 5, 2008

**SHU YONG**

"Shu Yong • Bubbles"

Catalogue available

August 30 – October 18, 2008

**to be announced**

**SYDNEY / AUSTRALIA**

**AI WEIWEI**

"Under Construction"

Sherman Contemporary Art Foundation

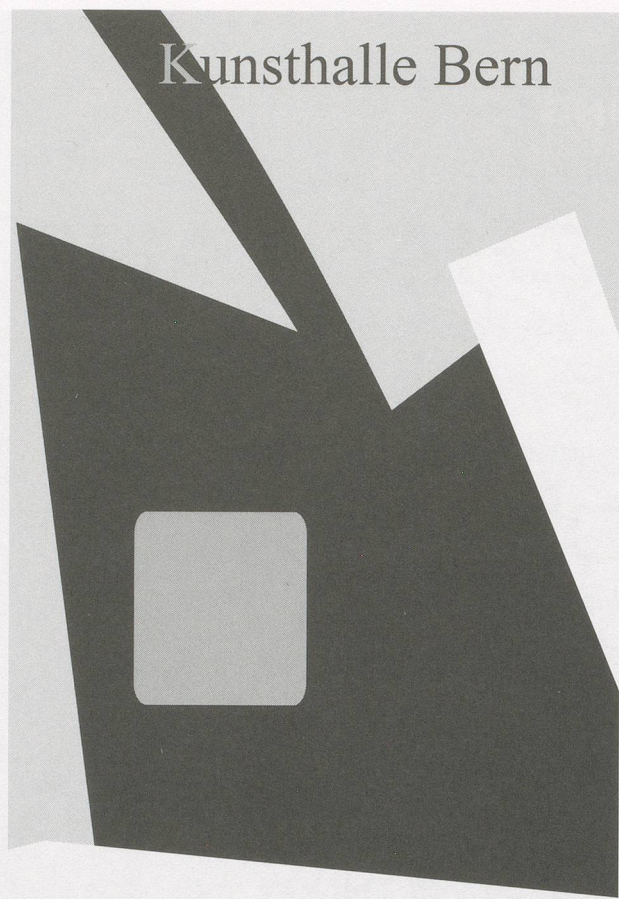
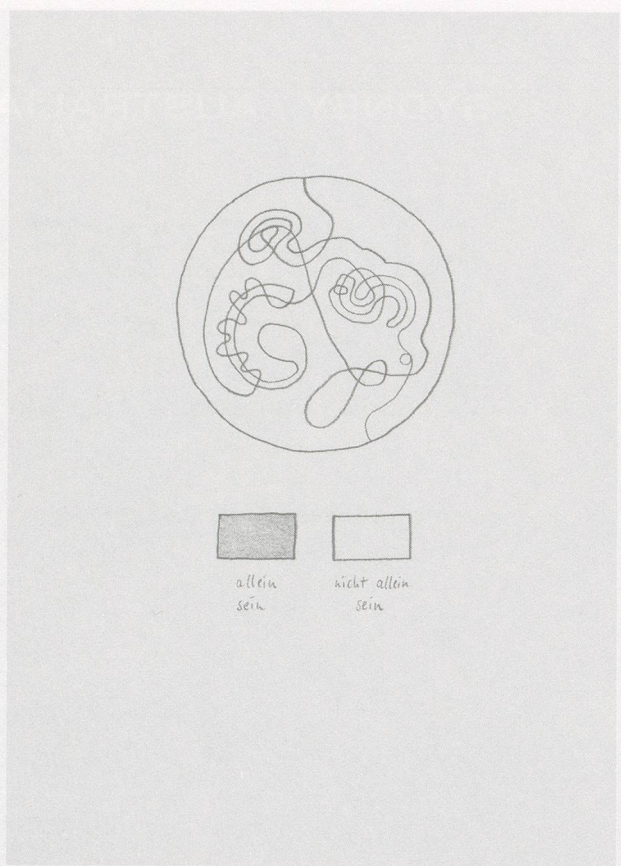
May 1 – July 26, 2008

Campbelltown Arts Center

May 2 – July 29, 2008

Art 39 Basel  
June 4 – June 8, 2.1 – P5  
Melbourne Art Fair  
July 30 – August 8





Kunsthalle Bern

Neuerscheinung im Wiens Verlag  
**Tomas Schmit** Wilma Lukatsch  
**Dreizehn Montagsgespräche**

408 Seiten, 288 farbige Abbildungen  
27x21,5 cm, Fadenheftung, broschiert

ISBN 978-3-9811288-1-9 48 Euro

**Barbara Wien**  
Galerie und Buchhandlung für Kunstbücher  
Linienstraße 158 T +49·30·28 38 53 52  
D - 10115 Berlin F +49·30·28 38 53 50  
Di-Fr 13-18, Sa 12-18

info@barbarawien.de www.barbarawien.de

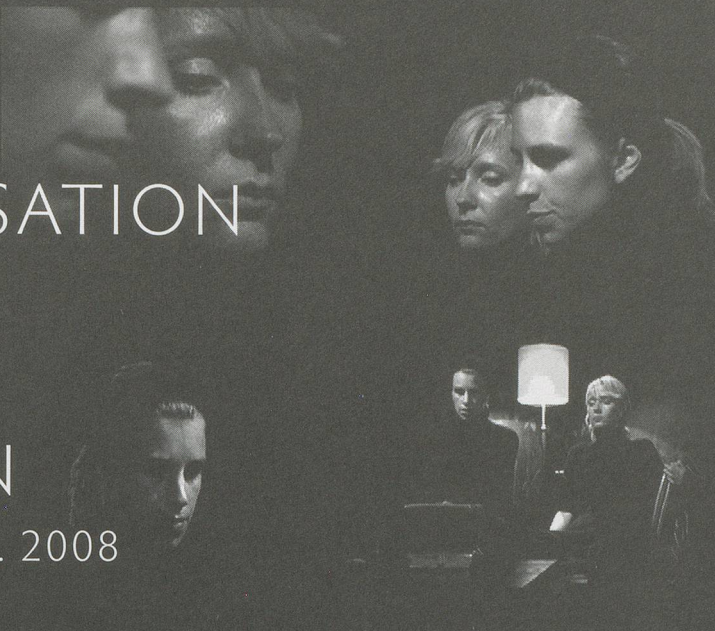
Abb.: tomas schmit, zeichnung aus *utopia*, 1975

SWING

Gerwald Rockenschau  
10.5.-27.7.2008

Kunsthalle Bern  
Helvetiaplatz 1, CH-3005 Bern  
T+0041313500040 F+0041313500041  
info@kunsthalle-bern.ch  
www.kunsthalle-bern.ch





IN  
SILENT  
CONVERSATION  
WITH  
INGMAR  
BERGMAN

5. JULI – 7. SEPT. 2008

[www.kunstmuseumthun.ch](http://www.kunstmuseumthun.ch)  
Thunerhof, Hofstettenstrasse 14, 3602 Thun, Di-So 10-17 Uhr, Mi 10-21 Uhr

Kunstmuseum Thun

**MARKUS SCHINWALD** February 16 - May 18 2008 Opening: February 15

**COLLECTION** May 31 - August 17 2008 Opening: May 30

**TADEUSZ KANTOR** August 30 - October 26 2008 Opening: August 29

**VON DENEN DIE ÜBERLEBEN / OF THOSE WHO WILL SURVIVE** September 2008

Premiere: September 13, Schiffbau Halle 2

A project with participation of Gabriela Friðriksdóttir, Erna Ómarsdóttir, Mathilde ter Heijne, Erwin Koch, Sibylle Berg, Jon Pylpchuk  
A production of the migros museum für gegenwartskunst Zürich and Schauspielhaus Zürich.

**DAWN MELLOR** November 8 - January 11 2009 Opening: November 7

migrosmuseum

FÜR GEGENWARTSKUNST  
ZÜRICH

Tue/Wen/Fri 12 am-6pm, Thu 12am-8pm, Sat/Sun 11am-5pm, Limmatstrasse 270, 8005 Zürich, T+41 44 277 20 50, F+41 44 277 62 86  
[www.migrosmuseum.ch](http://www.migrosmuseum.ch), [info@migrosmuseum.ch](mailto:info@migrosmuseum.ch), The migros museum für gegenwartskunst is an institution of the Migros Culture Percentage.



# BARNACLE BROS.

Art Fabrication



WWW.BARNACLEBROS.COM

ALLORA & CALZADILLA, LOS ANGELES OPERA,  
NANCY BURSON, LA NATURAL HISTORY MUSEUM,  
WILLIAM POPE L., KORI NEWKIRK, DITA VON TEESE,  
RUBEN ORTIZ-TORRES, JIM DRAIN, SHEPHERD FAIRY



NEW/RARE/OUT OF PRINT ARTISTBOOKS: CHRISTOPHE DAVIET-THERY, 10 RUE DUCHEFDELAVILLE, 75013 PARIS, FRANCE  
TEL. +33 1 53 79 05 95 FAX. +33 1 53 79 06 19 DAVIET-THERY@WANADOO.FR WWW.DAVIET-THERY.COM



bob van orsouw gallery limmatstrasse 270 8005 zurich  
phone +41 44 273 11 00 mail@bobvanorsouw.ch www.bobvanorsouw.ch

may 24  
until  
july 26, 2008 **hannah van bart**

august 30  
until  
october 11, 2008 **shirana shahbazi**

suzie q projects limmatstrasse 265 8005 zurich  
phone +41 44 273 03 00 info@suzie-q.ch www.suzie-q.ch

may 17  
until  
july 19, 2008 **karen sargsyan**  
theatrical and exaggerated but at the same time intimate and nearby

august 30  
until  
october 4, 2008 **charles karubian**

art basel, june 4-8, 2008, hall 2.1, booth S5





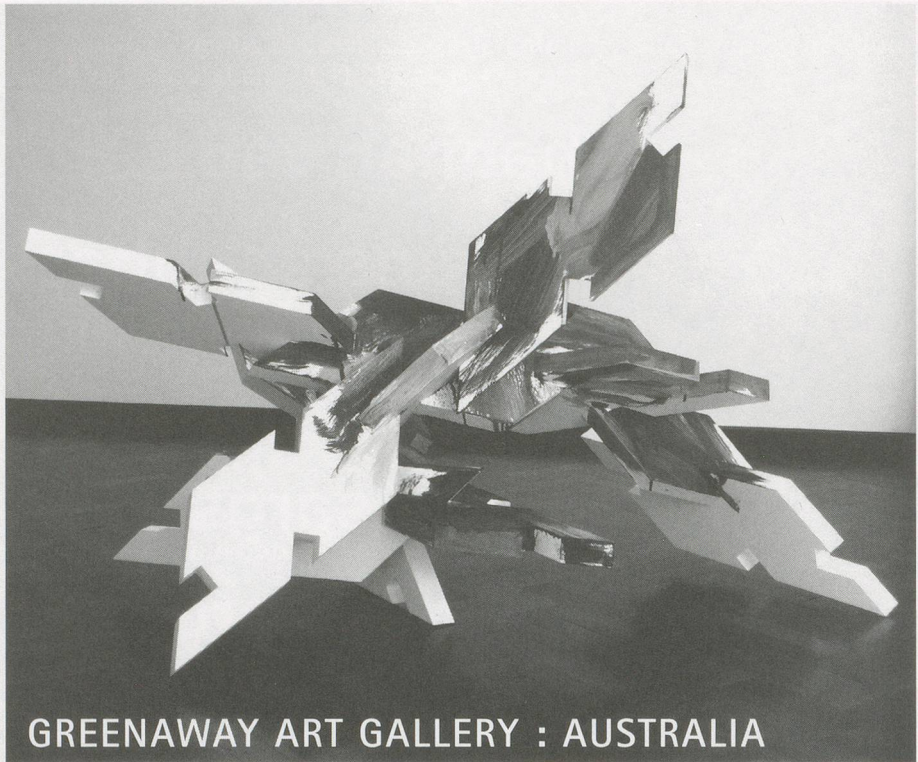
Melbourne Art Fair  
Australia  
July 30 - August 3, 2008

exhibiting artists include:

ARIEL HASSAN (image)  
PETER HENNESSEY  
MICHELLE NIKOU  
SALLY SMART  
IMANTS TILLERS

mag

t: +61 8 8362 6354  
w: www.greenaway.com.au



Walter Dahn → »...zwei, drei, vier und...« 29. März bis 28. Juni 2008

Georges Adéagbo, Yesim Akdeniz Graf, Marc Bauer, Keren Cytter,  
Hanne Darboven, Silvie Defraoui, Anita Di Bianco, Hadassah Emmerich, Jan Fabre,  
Gloria Friedmann, G.R.A.M., James Hyde, Klaus Merkel, Jos Näpflin, Shahryar Nashat,  
Pavel Pepperstein, Eran Schaerf, Daniel Schibli, Lucy Skaer, Anselm Stalder,  
Claudia Wieser, Estate Martin Disler → [www.martin-disler.ch](http://www.martin-disler.ch)

ART|39|Basel 4-8 June 2008  
Art Statement with Marc Bauer  
Art Unlimited with Shahryar Nashat

**ELISABETH KAUFMANN**

Müllerstrasse 57 CH-8004 Zürich Telefon Tel/Fax +41 (0)43 322 01 15/16 [info@elisabethkaufmann.com](mailto:info@elisabethkaufmann.com)  
Mittwoch-Freitag 14-18 Uhr Samstag 11-16 Uhr und nach Vereinbarung  
[www.elisabethkaufmann.com](http://www.elisabethkaufmann.com)



1. JUNI BIS 2. AUGUST 2008

# UGO RONDINONE

1. JUNI BIS 2. AUGUST 2008

# DOUG AITKEN

## GALERIE EVA PRESENHUBER

WWW.PRESENHUBER.COM

TEL: +41 (0) 43 444 70 50 / FAX: +41 (0) 43 444 70 60

LIMMATSTRASSE 270, POSTFACH 1517, CH-8031 ZÜRICH

ÖFFNUNGSZEITEN: DI-FR 12-18, SA 11-17

DOUG AITKEN, EMMANUELLE ANTILLE, MONIKA BAER, MARTIN BOYCE, ANGELA BULLOCH, VALENTIN CARRON, VERNE DAWSON, TRISHA DONNELLY, MARIA EICHHORN, URS FISCHER, PETER FISCHLI/DAVID WEISS, SYLVIE FLEURY, LIAM GILLICK, DOUGLAS GORDON, MARK HANDFORTH, CANDIDA HÖFER, KAREN KILIMNIK, ANDREW LORD, HUGO MARKL, RICHARD PRINCE, GERWALD ROCKENSCHAUB, TIM ROLLINS AND K.O.S., UGO RONDINONE, DIETER ROTH, EVA ROTHSCHILD, JEAN-FRÉDÉRIC SCHNYDER, STEVEN SHEARER, JOSH SMITH, BEAT STREULI, FRANZ WEST, SUE WILLIAMS

## BERNIER / ELIADES

11, EPTACHALKOU, GR-11851 ATHENS ▪ TEL: + 30 210 341 39 35-7, FAX: + 30 210 341 39 38  
www.bernier-eliades.gr ▪ bernier@bernier-eliades.gr

## NIKOS NAVRIDIS

APRIL 10 - MAY 16, 2008

GROUP SHOW:

## LIONEL ESTEVE

## MOSHEKWA LANGA

## LIANG WEI

MAY 21 - JULY 10, 2008



# Art | Basel | Miami Beach 4-7 | Dec | 08

Vernissage | December 3, 2008 | by invitation only

Catalog order: Phone +49/711-44 05 204, Fax +49/711-44 05 220, [www.artbook.com](http://www.artbook.com)

The International Art Show – La Exposición Internacional de Arte  
Art Basel Miami Beach, MCH Swiss Exhibition (Basel) Ltd., Messeplatz 10, CH-4058 Basel  
Fax +41/58-206 31 32, [miamibeach@artbasel.com](mailto:miamibeach@artbasel.com), [www.artbasel.com](http://www.artbasel.com)

**mch**  
messe schweiz

 UBS



# Art | 39 | Basel | 4-8 | 6 | 08

**Artists** | A | Antoni **Abad** | Marina **Abramović** | Vito **Acconci** | Franz **Ackermann** | Bas Jan **Ader** | Yaacov **Agam** | Doug **Aitken** | Ai Weiwei | Josef **Albers** | Pierre **Alechinsky** | Jennifer **Allora** & Guillermo **Calzadilla** | Pawel **Aithamer** | Kai **Aithoff** | Francis **Allys** | Ghada **Amer** | Carlos **Amorales** | Carl **Andre** | Giovanni **Anselmo** | Horst **Antes** | Emmanuelle **Antille** | Karel **Appel** | Nobuyoshi **Araki** | Diane **Arbus** | Alexander **Archipenko** | **Arman** | John M **Armleder** | Jean **Arp** | **Art & Language** | Richard **Artschwager** | Frank **Auerbach** | **Atelier van Lieshout** | Eugène **Atget** | Milton **Avery** | B | Francis **Bacon** | Donald **Baechler** | John **Baldessari** | Stephan **Balkenhol** | **Balthus** | Miquel **Barceló** | Matthew **Barney** | Robert **Barry** | Georg **Baselitz** | Jean-Michel **Basquiat** | Thomas **Bayrle** | Bernd & Hilla **Becher** | Max **Beckmann** | Vanessa **Beecroft** | Hans **Bellmer** | Joseph **Beuys** | Max **Bill** | Peter **Blake** | Anna & Bernhard **Blume** | John **Bock** | Alighiero **Boetti** | Christian **Boltanski** | Monica **Bonvicini** | Jonathan **Borofsky** | Louise **Bourgeois** | Martin **Boyce** | Constantin **Brancusi** | Georges **Braque** | Victor **Brauner** | Candice **Breitz** | Marcel **Broodthaers** | Stanley **Brouwn** | Günter **Brus** | Angela **Bulloch** | Daniel **Buren** | Balthasar **Burkhard** | Jean-Marc **Bustamante** | James Lee **Byars** | C | Pedro **Cabrera Reis** | Alexander **Calder** | Sophie **Calle** | Janet **Cardiff** & George **Bures Miller** | Anthony **Caro** | Henri **Cartier-Bresson** | Maurizio **Cattelan** | Vija **Celmins** | Paul **Cézanne** | Marc **Chagall** | John **Chamberlain** | Jake & Dinos **Chapman** | Eduardo **Chillida** | **Christo & Jeanne-Claude** | Chuck **Close** | James **Coleman** | John **Copland** | William N. **Copley** | Joseph **Cornell** | Tony **Cragg** | Martin **Creed** | D | Hanne **Darboven** | Giorgio **De Chirico** | Raoul **De Keyser** | Willem **De Kooning** | Robert **Delaunay** | Wim **Delvoye** | Walter **De Maria** | Jeroen **De Rijke** / Willem **De Rooij** | Nicolas **De Staël** | Richard **Deacon** | Tacita **Dean** | Thomas **Demand** | Jan **Dibbets** | Rineke **Dijkstra** | Jim **Dine** | Mark **Dion** | Mark **Di Suvero** | Atul **Dodiya** | Peter **Doig** | Trisha **Donnelly** | Stan **Douglas** | Vladimir **Dubossarsky** & Alexander **Vinogradov** | Jean **Dubuffet** | Marcel **Duchamp** | Marlene **Dumas** | E | William **Eggleston** | Olafur **Eliasson** | Michael **Elmgreen** & Ingar **Dragset** | Tracey **Emin** | Max **Ernst** | Richard **Estes** | Walker **Evans** | F | Jan **Fabre** | Jean **Fautrier** | Lyonel **Feininger** | Hans-Peter **Feldmann** | Mengbo **Feng** | Ian Hamilton **Finlay** | Urs **Fischer** | Peter **Fischli** & David **Weiss** | Barry **Flanagan** | Sylvie **Fleury** | Ceal **Floyer** | Lucio **Fontana** | Günther **Förg** | Sam **Francis** | Robert **Frank** | Helen **Frankenthaler** | Andrea **Fraser** | Lucian **Freud** | Bernard **Frize** | Lee **Friedlander** | Adam **Fuss** | G | Ellen **Gallagher** | Carlos **Garaicoa** | Kendell **Geers** | Alberto **Giacometti** | Gilbert & George | Liam **Gillick** | Robert **Gober** | Nan **Goldin** | Julio **González** | Douglas **Gordon** | Arshile **Gorkey** | Dan **Graham** | Rodney **Graham** | Katharina **Grosche** | George **Grosz** | Andreas **Gursky** | Philip **Guston** | Fabrice **Gygi** | H | Peter **Halley** | Mark **Handforth** | Keith **Haring** | Mona **Hatoum** | Eberhard **Havekost** | Erich **Heckel** | Jeppe **Hein** | Michael **Heizer** | Georg **Herold** | Arturo **Herrera** | Eva **Hesse** | Gary **Hill** | Thomas **Hirschhorn** | David **Hockney** | Candida **Höfer** | Hans **Hofmann** | Carsten **Höller** | Christian **Holstad** | Jenny **Holzer** | Rebecca **Horn** | Roni **Horn** | Jonathan **Horowitz** | Huang Yong Ping | Teresa **Hubbard** / Alexander **Birchler** | Pierre **Huyghe** | I | Cristina **Iglesias** | Leiko **Ikemura** | Jörg **Immendorff** | J | Alfredo **Jaar** | Christian **Jankowski** | Ann Veronica **Janssens** | Ji Wenyu | Chris **Johanson** | Jasper **Johns** | Donald **Judd** | Jung Yeondoo | K | Ilya & Emilia **Kabakov** | Wassily **Kandinsky** | Anish **Kapoor** | Alex **Katz** | On **Kawara** | Mike **Kelley** | Ellsworth **Kelly** | William **Kentridge** | André **Kertész** | Anselm **Kiefer** | Karen **Kilimnik** | Martin **Kippenberger** | Ernst Ludwig **Kirchner** | Per **Kirkeby** | Paul **Klee** | Yves **Klein** | Gustav **Klimt** | Franz **Kline** | Imi **Knoebel** | Oscar **Kokoschka** | Jeff **Koons** | Joseph **Kosuth** | Jannis **Kounellis** | Guillermo **Kuitca** | Yayoi **Kusama** | L | Wolfgang **Laib** | Wifredo **Lam** | Jim **Lambie** | Luisa **Lambri** | Sean **Landers** | Jonathan **Lasker** | Henri **Laurens** | Bertrand **Lavier** | Louise **Lawler** | Le **Corbusier** | Ufan **Lee** | Fernand **Léger** | Sol **LeWitt** | Roy **Lichtenstein** | Glenn **Ligon** | Sharon **Lockhart** | Richard Paul **Lohse** | Richard **Long** | Robert **Longo** | Morris **Louis** | Sarah **Lucas** | Markus **Lüpertz** | M | René **Magritte** | Kazimir **Malevich** | Ray **Man** | Robert **Mangold** | Piero **Manzoni** | Robert **Mapplethorpe** | Fabian **Marcaccio** | Christian **Marclay** | Brice **Marden** | Joseph **Marioni** | Henri **Matisse** | Roberto **Matta** | Gordon **Matta-Clark** | Paul **McCarthy** | Allan **McCollum** | John **McCracken** | Rita **McBride** | Barry **McGee** | Jonathan **Meese** | Cildo **Meireles** | Ana **Mendieta** | Mario **Merz** | Annette **Messenger** | Meuser | Henri **Michaux** | Boris **Mikhailov** | Joan **Miró** | Tatsuo **Miyajima** | Shintaro **Miyake** | Amadeo **Modigliani** | László **Moholy-Nagy** | Jonathan **Monk** | Henry **Moore** | Giorgio **Morandi** | François **Morellet** | Sarah **Morris** | Robert **Motherwell** | Matt **Mullican** | Juan **Muñoz** | Markus **Muntean** / Adi **Rosenblum** | N | Yoshitomo **Nara** | Bruce **Nauman** | Ernesto **Neto** | Rivane **Neuenschwander** | Louise **Nevelson** | Helmut **Newton** | Olaf **Nicolai** | Hermann **Nitsch** | Kenneth **Noland** | Emil **Nolde** | O | Albert **Oehlen** | Chris **Ofili** | Claes **Oldenburg** | Julian **Opie** | Gabriel **Orozco** | Tony **Oursler** | P | Nam June **Paik** | Mimmo **Paladino** | Giulio **Paolini** | Jorge **Pardo** | Steven **Parrino** | A. R. **Penck** | Giuseppe **Penone** | Manfred **Pernice** | Raymond **Pettibon** | Elizabeth **Peyton** | Francis **Picabia** | Pablo **Picasso** | Jack **Pierson** | Michelangelo **Pistoletto** | Jaume **Plensa** | Serge **Poliakoff** | Sigmar **Polke** | Jackson **Pollock** | Richard **Prince** | Q | Marc **Quinn** | R | Tal **R** | Neo **Rauch** | Arnulf **Rainer** | Mel **Ramos** | Tobias **Rehberger** | Ad **Reinhardt** | Anselm **Reyle** | Jason **Rhoades** | Bridget **Riley** | Jean-Paul **Riopelle** | Pipilotti **Rist** | Alexander **Rodchenko** | Ugo **Rondinone** | Dieter **Roth** | Mark **Rothko** | Glen **Rubsamen** | Ulrich **Rückriem** | Allen **Ruppertsberg** | Ed **Ruscha** | Robert **Ryman** | S | Anri **Sala** | David **Salle** | Wilhelm **Sasnal** | Antonio **Saura** | Egon **Schiele** | Markus **Schinwald** | Julian **Schnabel** | Gregor **Schneider** | Thomas **Schütte** | Kurt **Schwitters** | Sean **Scully** | Tino **Sehgal** | Richard **Serra** | Joel **Shapiro** | Jim **Shaw** | Cindy **Sherman** | David **Shrighley** | Stephen **Shore** | Santiago **Sierra** | Andreas **Slominski** | David **Smith** | Pierre **Soulages** | Simon **Starling** | Frank **Stella** | Rudolf **Stingel** | Jessica **Stockholder** | Thomas **Struth** | **Sturtevant** | Catherine **Sullivan** | Hiroshi **Sugimoto** | T | Vibeke **Tandberg** | Yves **Tanguy** | Antoni **Tàpies** | Sam **Taylor Wood** | Diana **Thater** | Paul **Thek** | Frank **Thiel** | Wolfgang **Tillmans** | Jean **Tinguely** | Rirkrit **Tiravanija** | Mark **Tobey** | Niels **Toroni** | Rosemarie **Trockel** | **Tunga** | Gavin **Turk** | James **Turrell** | Richard **Tuttle** | Luc **Tuymans** | Cy **Twombly** | Keith **Tyson** | U | Günther **Uecker** | Günter **Umberg** | Juan **Usié** | V | Michel **Verjux** | Francesco **Vezzoli** | Not **Vital** | Alexej **Von Jawlensky** | W | Jeff **Wall** | Mark **Wallinger** | Wang Guangyi | Wang Jianwei | Andy **Warhol** | Lawrence **Weiner** | James **Welling** | Tom **Wesselmann** | Franz **West** | Pae **White** | Rachel **Whiteread** | TJ **Wilcox** | Christopher **Williams** | **Wols** | Christopher **Wool** | Erwin **Wurm** | X | Xhafa **Sisley** | Y | Yan Pei-Ming | Yang Fudong | Z | Zhang Enli | Zheng Guogu | Andrea **Zittel** | Heimo **Zobernig** | Gilberto **Zorio** | and other 2000 artists | Index April 2008

**Art Galleries** | **Art Edition** | **Art Statements** | **Art Premiere** | **Art Unlimited** | **Art Institutions** | **Public Art Projects** | **Art Film** | **Art Basel Conversations** | **Art Lobby** | **Artists Books** | **Art Magazines**  
**Katalogbestellung:** Tel. +49/711-44 05 204, Fax +49/711-44 05 220, sales@hatjecantz.de

**Vernissage** | 3. Juni 2008 | nur mit Einladung

**Professional Day** | 6. Juni 2008 | von 11 bis 13 Uhr | Spezialprogramm | nur mit Einladung

**Art Basel Conversations** | 4. Juni bis 7. Juni 2008 | von 10 bis 11 Uhr

The International Art Show – Die Internationale Kunstmesse  
Art 39 Basel, MCH Messe Schweiz (Basel) AG, Messeplatz 10, CH-4058 Basel  
Fax +41/58-206 26 86, info@artbasel.com, www.artbasel.com

mch  
messe schweiz

UBS



Madrid February 12-18 09

Miami December 3-7 08

London October 15-19 08

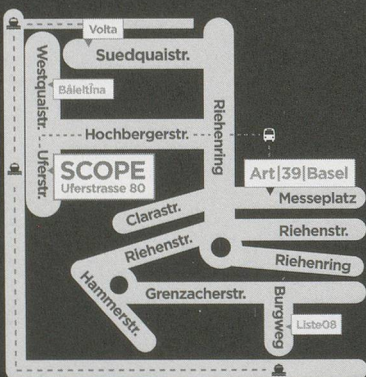
Hamptons July 24-27 08

Basel June 3-8 08

# SCOPE Basel

# June 3-8 08

International  
Contemporary  
Art Fairs  
Uferstrasse 80  
CH- 4057 Basel  
Switzerland  
[SCOPE-ART.COM](http://SCOPE-ART.COM)



New York March 26-30 08

Miami December 5-9 07





# LISTE 08

## THE YOUNG ART FAIR IN BASEL

June 3–8, 2008

**Open Hours** Tuesday to Saturday 1 p.m. to 9 p.m., Sunday 1 p.m. to 7 p.m.

**Opening Reception** Monday, June 2, 5 p.m. to 10 p.m.

Burgweg 15, CH-4058 Basel, T +41 61 692 20 21, [info@liste.ch](mailto:info@liste.ch), [www.liste.ch](http://www.liste.ch)

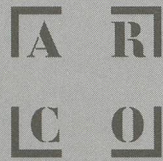
A project in the workshop community Warteck pp

64 Galleries from 22 Countries \*new at LISTE

**Austria:** AndreasHuber, Vienna. \*LayrWuestenhagen, Vienna. Mezzanin, Vienna. **Belgium:** dépendance, Brussels. **Chile:** \*Traschi, Santiago. **Czech Republic:** hunt kastner, Prague. **Denmark:** kirkhoff, Copenhagen. ChristinaWilson, Copenhagen. **France:** Chez Valentin, Paris. CortexAthletico, Bordeaux. Cosmic, Paris. schleicher + lange, Paris. Jocelyn Wolff, Paris. **Germany:** \*Sandra Bürgel, Berlin. Iris Kadel, Karlsruhe. Johann König, Berlin. LinnLühn, Cologne. NeueAlteBrücke, Frankfurt. PeresProjects, Berlin/LosAngeles. \*schnittraum/lutzbecker, Cologne. MickySchubert, Berlin. VanHorn, Dusseldorf. **Great Britain:** \*Ancient&Modern, London. LauraBarlett, London. SorchaDallas, Glasgow. DickSmith, London. HeraldSt, London. IBIDProjects, London/Vilnius. MaryMary, Glasgow. Jonathan Viner/Fortescue Avenue, London. **Greece:** The Breeder, Athens. **Holland:** Juliette Jongma, Amsterdam. Upstream, Amsterdam. martin van zomeren, Amsterdam. Zinger, Amsterdam. **Italy:** Fonti, Napoli. Francesca Kaufmann, Milano. \*Klerkx, Milano. \*Francesca Minini, Milano. Monitor, Rome. Raucci/Santamaria, Napoli. **Japan:** Yamamoto Gendai, Tokyo. **Mexico:** \*Proyectos Monclova, Mexico. Myto, Mexico. **Norway:** Standard (Oslo), Oslo. **New Zealand:** Michael Lett, Auckland. **Poland:** lokal 30, Warsaw. Raster, Warsaw. **Romania:** Plan B, Cluj. **Spain:** \*ProjecteSD, Barcelona. **Sweden:** Elastic, Malmö. **Switzerland:** Evergreene, Geneva. Freymond-Guth, Zurich. Groeflin Maag, Zurich. Laurin, Zurich. **Turkey:** \*Rodeo, Istanbul. **USA:** Broadway 1602, New York. \*Elizabeth Dee, New York. Zach Feuer, New York. Foxy Production, New York. Daniel Hug, Los Angeles. David Kordansky, Los Angeles. \*Overduin and Kite, Los Angeles. Wallspace, New York.

Main Sponsor: **E.GUTZWILLER & CIE, BANQUIERS, Basel**





# ARCO09

28 INTERNATIONAL CONTEMPORARY ART FAIR

11 - 16 FEBRUARY 2009 | FERIA DE MADRID  
GENERAL PUBLIC FROM FRIDAY 13

[www.arco.ifema.es](http://www.arco.ifema.es)



IFEMA  
**Feria de  
Madrid**

**LINEA IFEMA / IFEMA CALL CENTRE**

LLAMADAS DESDE ESPAÑA / CALLS FROM SPAIN  
INFOIFEMA 902 22 15 15  
EXPOSITORES / EXHIBITORS 902 22 16 16

LLAMADAS INTERNACIONALES (34) 91 722 30 00  
INTERNATIONAL CALLS

FAX (34) 91 722 57 98

IFEMA Feria de Madrid  
28042 Madrid  
España / Spain

[arco@ifema.es](mailto:arco@ifema.es)



23-26  
OCTOBRE  
2008,  
GRAND  
PALAIS

&

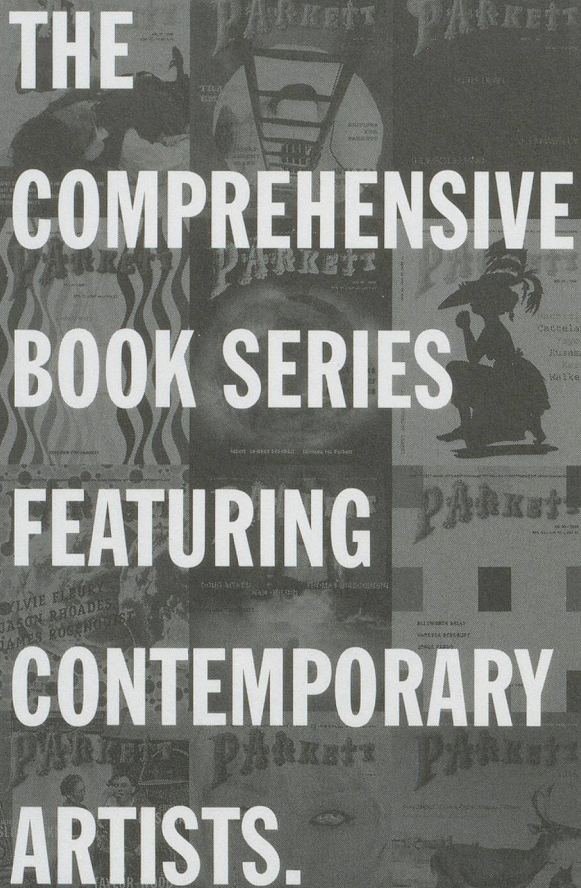
LOUVRE,  
**fiac** : PARIS.

Organisé par  
Reed Expositions

[www.fiac.com](http://www.fiac.com) — [fiac@reedexpo.fr](mailto:fiac@reedexpo.fr)

Partenaire Officiel : STATE STREET





**THE  
COMPREHENSIVE  
BOOK SERIES  
FEATURING  
CONTEMPORARY  
ARTISTS.**

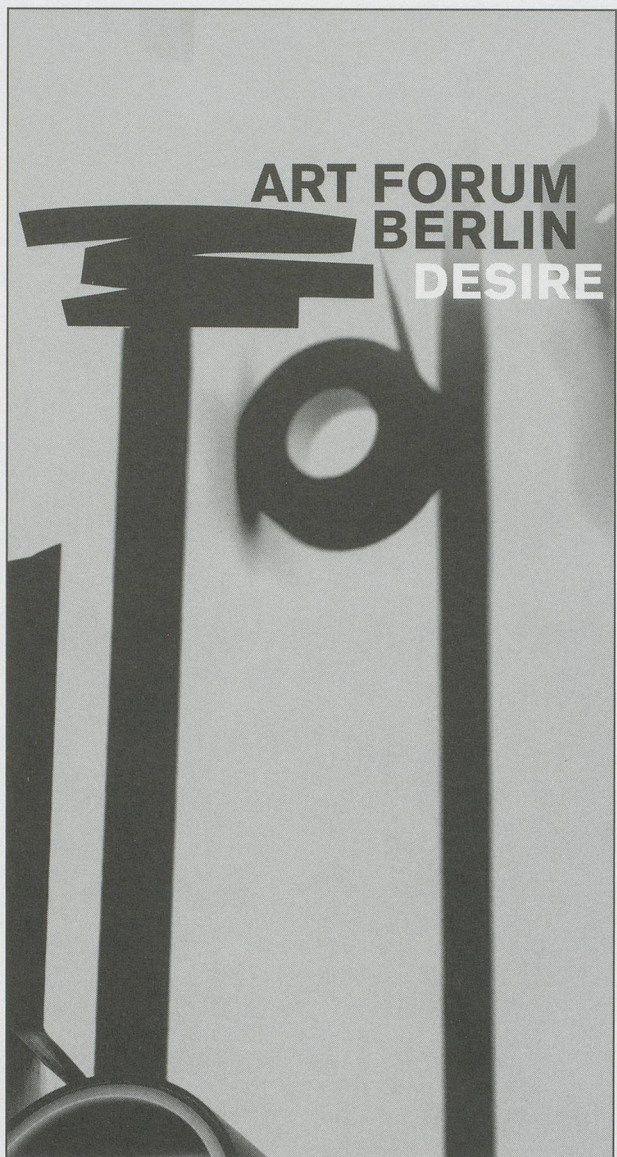
Please use the order form enclosed in this issue  
and send it to the following address:

PARKETT, Quellenstrasse 27, CH-8031 Zürich  
Telefon +41-44-271 81 40, Fax 41-44-272 43 01  
PARKETT, 145 Av. of the Americas, New York, NY 10013  
phone (212) 673 2660, fax (212) 271 0704

[www.parkettart.com](http://www.parkettart.com)

**PARKETT**

**THE PARKETT SERIES WITH CONTEMPORARY ARTISTS  
DIE PARKETT-REIHE MIT GEGENWARTSKÜNSTLERN**




**ART FORUM  
BERLIN  
DESIRE**

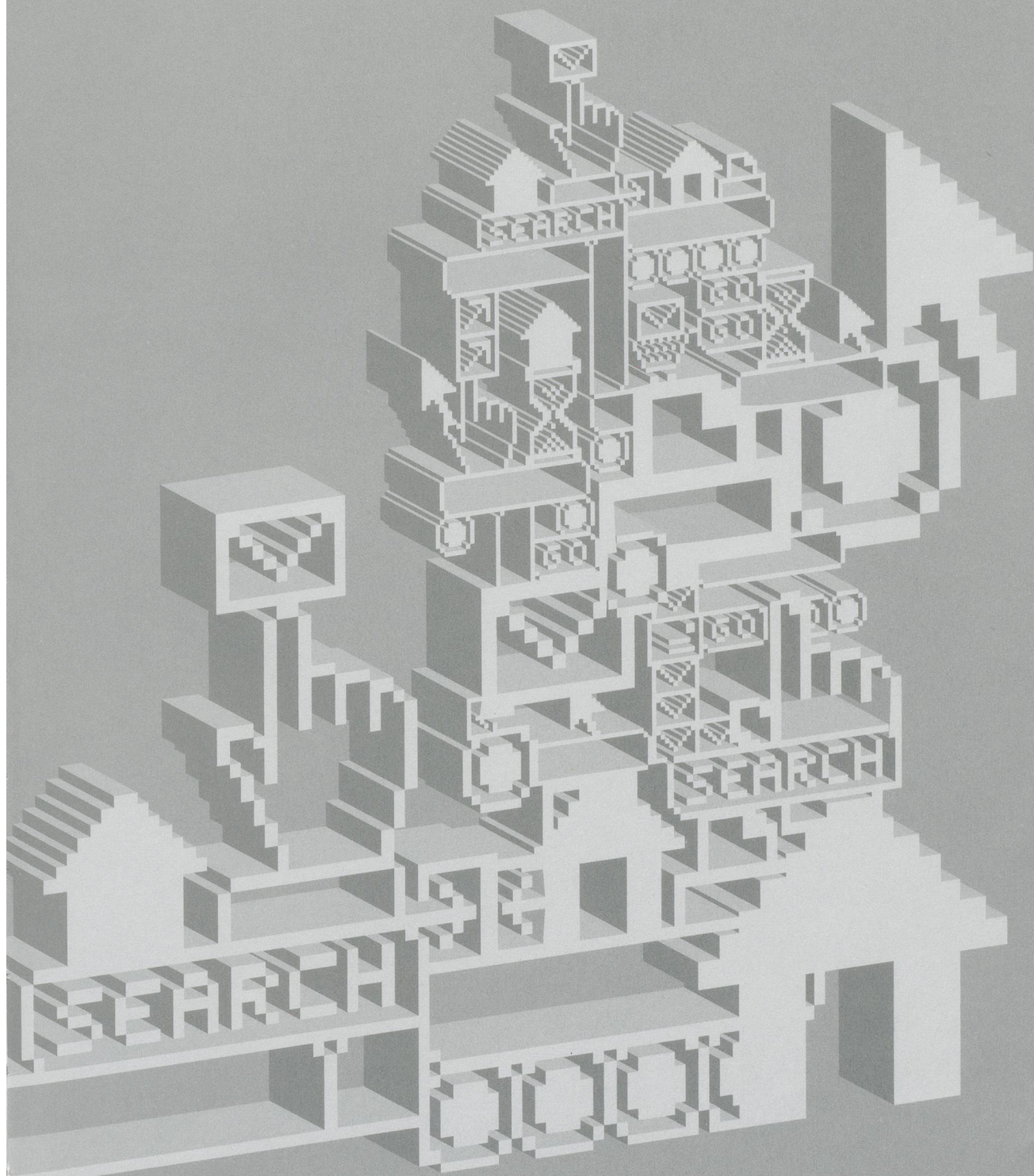
**31. OKT. – 3. NOV. 2008**  
Vernissage 30. Okt. 2008

**Sonderausstellung „Difference, what difference?“  
kuratiert von Hans-Jürgen Hafner**

Messe Gelände Berlin, Eingang: Masurenallee, Halle 19  
Messe Berlin GmbH, ART FORUM BERLIN, Messedamm 22, D-14055 Berlin  
T +49 30 3038-4703 oder -1833, F +49 30 3038 2060 oder -1830  
[art@messe-berlin.de](mailto:art@messe-berlin.de) | [www.art-forum-berlin.de](http://www.art-forum-berlin.de)

 Messe Berlin



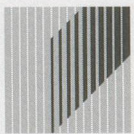
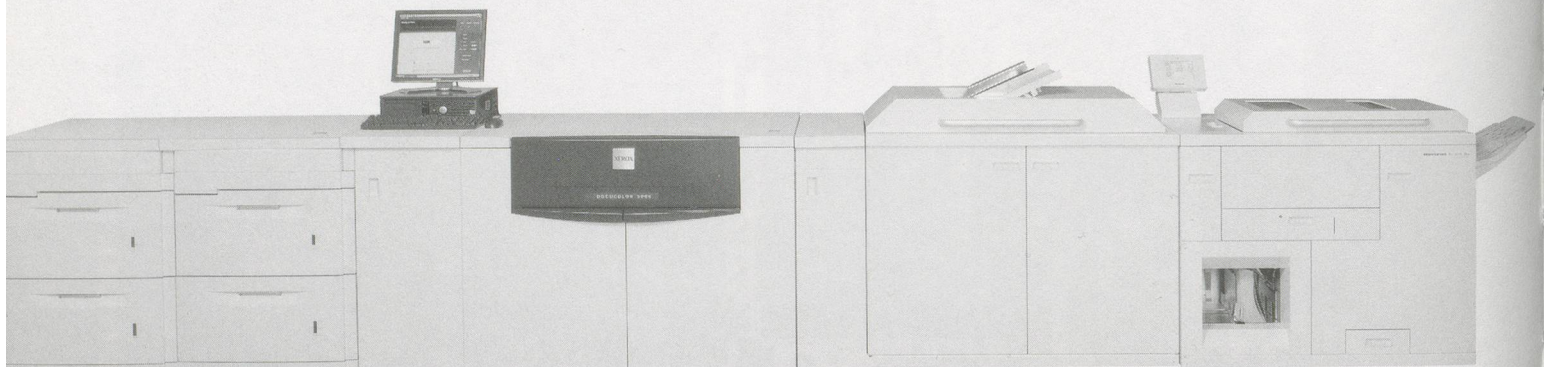


eyekon intermedia lab

[www.eyekon.ch](http://www.eyekon.ch)



# «Kleinauflagen drucken wir digital zu Spezialkonditionen»



Zürichsee  
Druckereien AG

Seestr. 86 | CH-8712 Stäfa | Telefon 044 928 53 18 (Thomas Kramer) | Fax 044 928 53 10 | tkramer@zsd.ch | www.zsd.ch



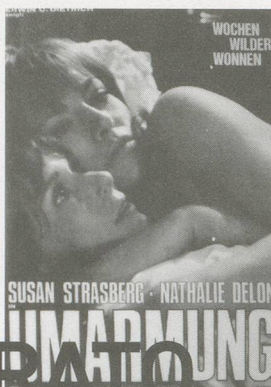
Photo: Claudia Knoepfel & Stefan Indlekofar

CHRISTOPHE GRABER  
JEWELLERY

FRAUMÜNSTERSTRASSE 27 • CH-8022 ZÜRICH • TELEFON +41 43 344 88 33  
WWW.CHRISTOPHEGRABER.COM • WELCOME@CHRISTOPHEGRABER.COM

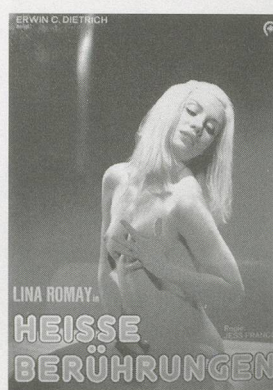


# SI



## TAIYO ONORATO

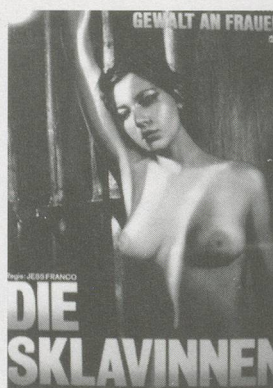
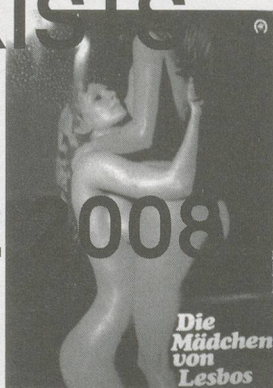
## NICO KREBS



## STUDIO 495

## LAWRENCE WEINER

## WATER IN MILK EXISTS



## MAY 28 TO JULY 12, 2008

## OPENING RECEPTION:

## MAY 27 2008, 6 PM



28.05—23.08.2008

GALLERIA GOTTARDO

Galleria Gottardo  
Viale Stefano Franscini 12  
6900 Lugano  
Switzerland

Tel +41 91 808 1988  
galleria@gottardo.com  
www.galleria-gottardo.org

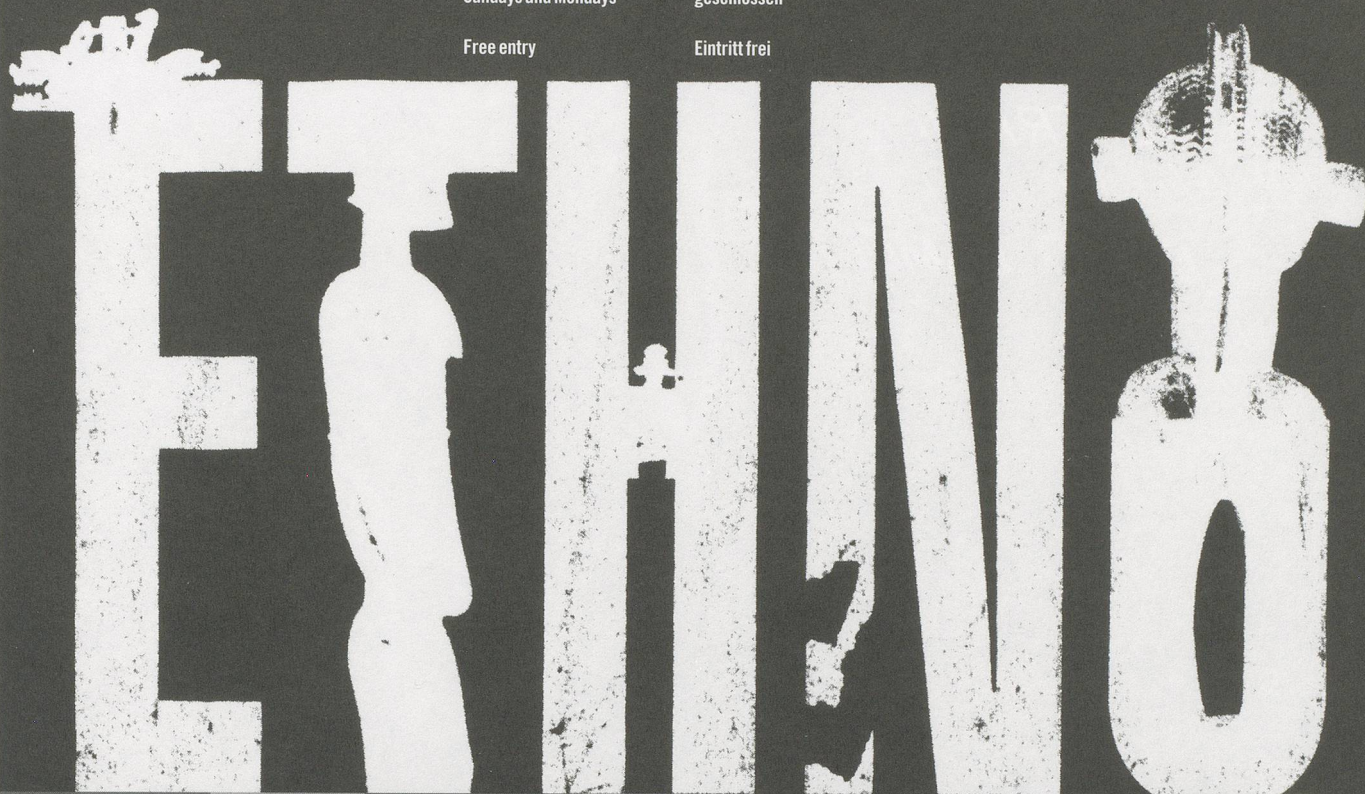
Tuesday  
2 pm – 5 pm  
Wednesday – Saturday  
11 am – 5 pm  
Closed  
Sundays and Mondays

Dienstag  
14.00 – 17.00 Uhr  
Mittwoch bis Samstag  
11.00 – 17.00 Uhr  
Sonntag und Montag  
geschlossen

a cultural foundation of Banca del Gottardo  
eine Kulturstiftung der Banca del Gottardo  
Institutional Patron of the Peggy Guggenheim Collection

Free entry

Eintritt frei



PEGGY GUGGENHEIM'S ETHNIC ART COLLECTION PEGGY GUGGENHEIM'S ETHNISCHE KUNSTSAMMLUNG



# ABOVE THE FOLD

Museum für Gegenwartskunst Basel

1. Juni bis 12. Oktober 2008 [www.kunstmuseumbasel.ch](http://www.kunstmuseumbasel.ch)

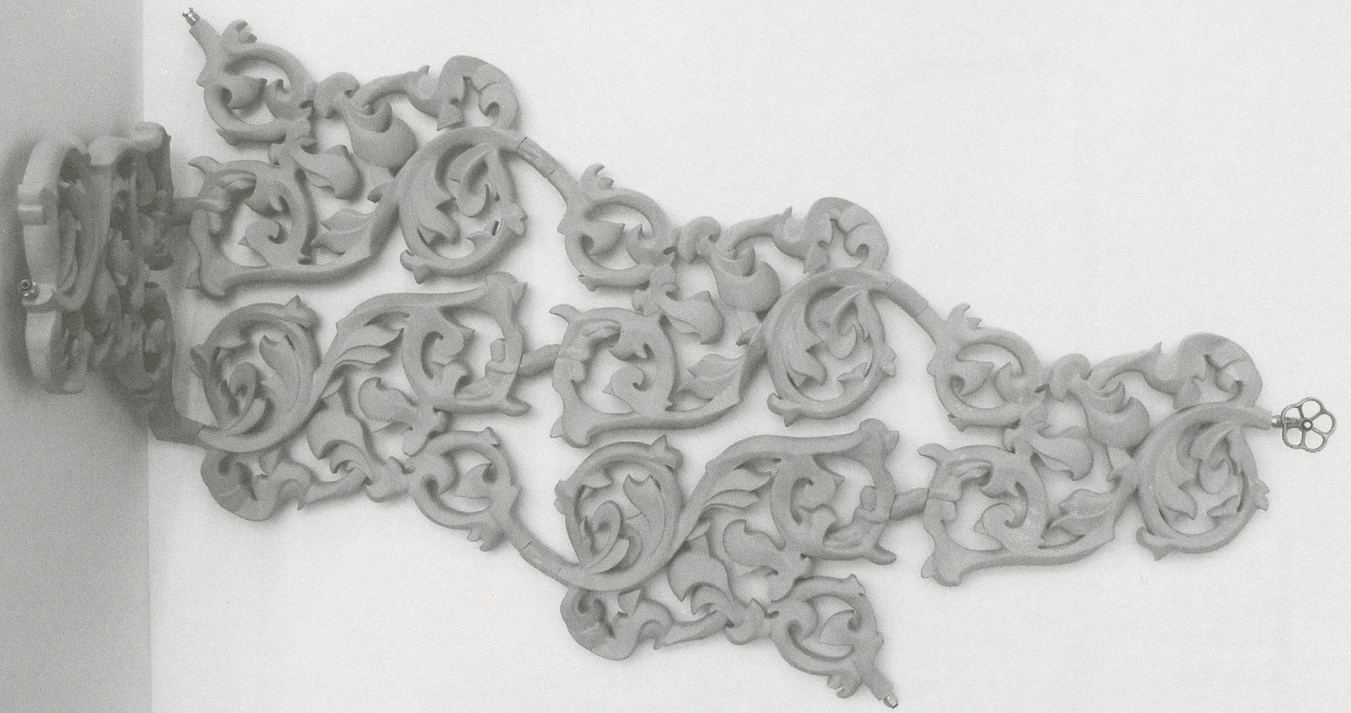
AYŞE ERKMEN  
CEAL FLOYER  
DAVID LAMELAS

&  
COLLECTION SELECTION

*Künstler wählen Werke aus der Sammlung*

*Sponsor: Fonds für künstlerische Aktivitäten im Museum für Gegenwartskunst  
der Emanuel Hoffmann-Stiftung und der Christoph Merian Stiftung*





**JORIS LAARMAN**  
Stranger than fiction  
25 abril - 6 julio

**ROYAL ART LODGE**  
**NATI BERMEJO**  
**IGOR SKINJA**  
13 junio-28 septiembre

**FORSYTHE & MacALLEN**  
11 julio - 10 octubre

**CAB**  
CENTRO DE ARTE  
CAJA DE BURGOS

  
Caja de Burgos  
Obra Social

CAB. Centro de Arte Caja de Burgos  
C. Saldaña s/n 09003 Burgos - Spain Tel. +34 947 256 550  
contacta@cabdeburgos.com www.cabdeburgos.com





Dressing table, 1929  
Designed by Kem Weber

**Design mirrors society.**

Technological advances are reflected in the shape of the items we surround ourselves with. Thousands of examples can be found at The Wolfsonian-FIU. And a few thousand more examples can be found at home.

# WOLFSONIAN

THE MUSEUM OF THINKISM

1001 WASHINGTON AVENUE, MIAMI BEACH ■ WWW.WOLFSONIAN.ORG

Another way Florida International University makes Earth more interesting.



# FRIEDRICH KUNATH

*Rising vs. Setting*

May 22 – August 3, 2008

# AÏDA RUILOVA

*The Singles 1999 – Now*

May 29 – August 7, 2008

# IMAGINARY THING

July 9 – August 7, 2008

# UNKNOWN PLEASURES

August 9 – October 19, 2008

# PHIL COLLINS

2008 Jane and Marc Nathanson Distinguished Artist in Residence

August 15 – October 26, 2008

## aspenartmuseum

590 north mill street

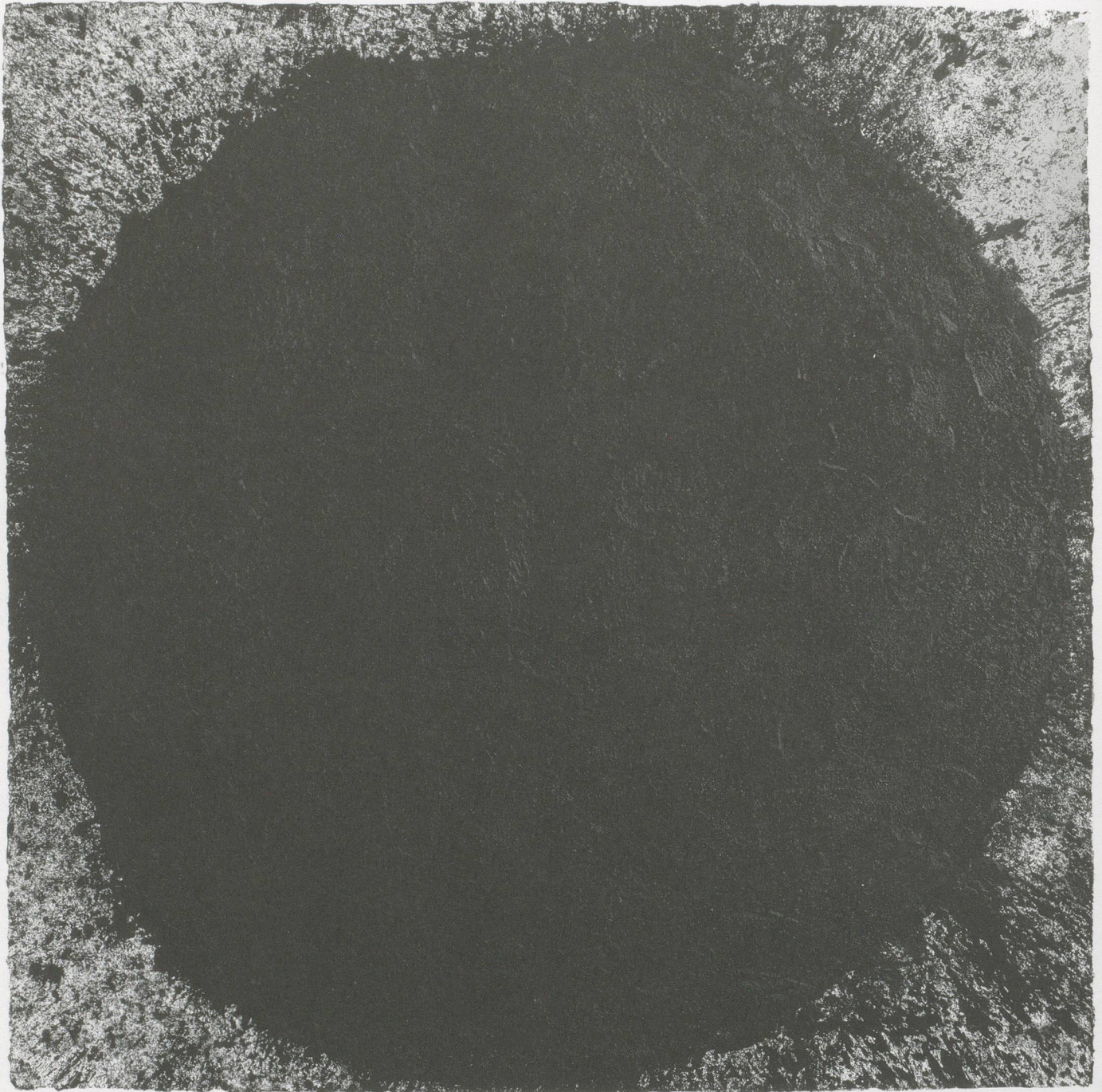
aspen colorado 81611

970 925 8050

[www.aspenartmuseum.org](http://www.aspenartmuseum.org)



# RICHARD SERRA



**DRAWINGS WORK COMES OUT OF WORK 14|06| – 14|09|2008**  
**KunsthauB Bregenz [www.kunsthauB-bregenz.at](http://www.kunsthauB-bregenz.at) tägl. 10–20 Uhr**

**KUB**

Richard Serra | out of round X | 1999 | Farbstift auf Hiromi-Papier | 201,3 x 201,3 cm | New York



SCHAULAGER<sup>®</sup>

MONIKA SOSNOWSKA

ANDREA ZITTEL

1:1

26.04. – 21.09.08

Di–Fr 12–18 Uhr, Do 12–19 Uhr, Sa/So 10–17 Uhr  
Art Basel 2.–3. und 5.–8. Juni 10–18 Uhr, 4. Juni 12–18 Uhr  
1. August geöffnet

Schaulager, Ruchfeldstrasse 19, CH-4142 Münchenstein/Basel, [www.schaulager.org](http://www.schaulager.org)

LAURENZ-STIFTUNG

Andrea Zittel, Prototype for Bulwartz at Art Zittel, Rubin, 2007, Plastik auf Tannenspertholz, 116,8 x 182,9 cm (Detail), © Andrea Zittel, Foto: Josh White, made courtesy Andrea Zittel Gallery, New York and Regen Projects, Los Angeles / Monika Sosnowska, Work, a high contrast black and white photograph, detail, © Monika Sosnowska



**Blasted Allegories** Works from the Ringier Collection

16. 5. – 3. 8. 2008



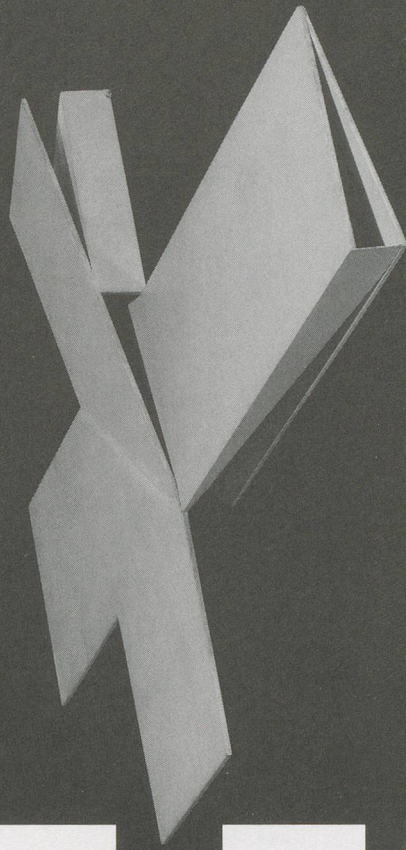
Cindy Sherman, Untitled (The Daughter at the Funeral), 1978/2000, b/w photograph, Ringier Collection, © the artist

**Kunstmuseum Luzern** Museum of Art Lucerne  
[www.kunstmuseumluzern.ch](http://www.kunstmuseumluzern.ch)



**The Daros  
Collections**

**Teil 2  
14.3. – 7.9.08**

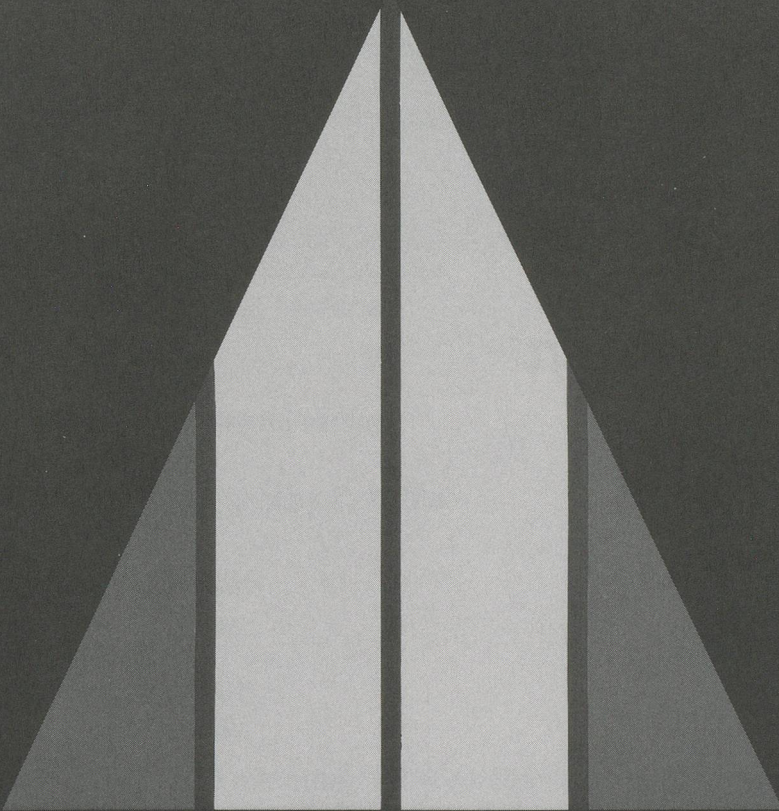


# FACE TO FACE

Waltercio Caldas  
Luis Camnitzer  
Lygia Clark  
Carlos Cruz-Diez  
Antonio Dias  
Dan Flavin  
Ellsworth Kelly  
Guillermo Kuitca  
Julio Le Parc  
Sol LeWitt  
Vik Muniz  
Barnett Newman  
Hélio Oiticica  
Nelson Ramos  
Robert Ryman  
Mira Schendel  
Richard Serra  
Jesús Rafael Soto  
Cy Twombly

Daros Exhibitions  
Do - So, 12 - 18 h  
Limmatstrasse 268  
8005 Zürich  
[www.daros-latinamerica.net](http://www.daros-latinamerica.net)  
[www.daros.ch](http://www.daros.ch)

**DAROS**







## Hans Josephsohn

*Represented by*

**Galerie Felix Lehner, St.Gallen**  
[www.kesselhaus-josephsohn.ch](http://www.kesselhaus-josephsohn.ch)

**HAUSER & WIRTH ZÜRICH LONDON**  
[www.hauserwirth.com](http://www.hauserwirth.com)



# a crime against art

Director: Hila Peleg,  
Madrid/Berlin, 2007, 100 min, original footage DV

## Cast

Defendants: Anton Vidokle and Tirdad Zolghdar  
Prosecutors: Vasif Kortun and Chus Martinez  
Defense attorney: Charles Esche  
Judge: Jan Verwoert  
Expert witnesses: Maria Lind and Anselm Franke  
Artist: Setareh Shabazi  
Public: Keti Chukrov and Barnaby Drabble

With special contribution by Liam Gillick.

Producer: **unitednationpslaza**

A Crime Against Art is based  
on The Trial in Madrid,  
February 2007  
Organised by Anton Vidokle  
and Tirdad Zolghadr.

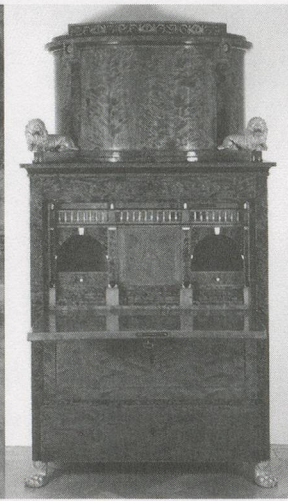
Distributed by BDV • DVD NTSC, 100 minutes, 25 € Available at: <http://www.bureaudesvideos.com/>



**COLOGNE  
FINE  
ART &  
ANTIQUES**

WWW.COFAA.DE

# Cologne Fine Art & Antiques 2008



**19. – 23. November 2008  
Kunst- und Antiquitätenmesse**

Koelnmesse GmbH  
Messeplatz 1  
50679 Köln  
Tel. +49 221 821-0  
Fax +49 221 821-3734  
cofaa@koelnmesse.de  
www.koelnmesse.de

 **koelnmesse**





[www.swisspartners.com](http://www.swisspartners.com)

**Entrust your assets to loyal hands.**  
The success of swisspartners and its clients is based on independence, professional competence, and integrity. Since 1993.

swisspartners Investment Network AG  
Am Schanzengraben 23 P.O. Box CH-8022 Zürich  
info@swisspartners.com www.swisspartners.com  
Zürich Basel Genève Vaduz







**MARINA ABRAMOVIĆ**

*8 Lessons on Emptiness with a Happy End*

22 May - 8 August 2008

**FABRICE GYGI**

*Vigie*

Art|39|Basel – Art Unlimited – 4-8 June 2008  
jointly presented with Galerie Chantal Crousel, Paris

Galerie Guy Bärtschi, Geneva  
[www.bartschi.ch](http://www.bartschi.ch)



GALERIE NÄCHST ST. STEPHAN  
ROSEMARIE SCHWARZWÄLDER

JOËLLE TUERLINCKX

5 SALLES FLOTTANTES EXTRAORDINAIREMENT EXCEPTIONNELLE  
MENT RÉUNIES EN UNE CONFIGURATION 'GALERIE NÄCHST  
ST.STEPHAN ROSEMARIE SCHWARZWÄLDER' + 1 SALLE GRATUITE

# ”LE PRÉSENT ABSOLU MENT”

Grünangergasse 1/2, A-1010 Wien, Tel +43 1 512 12 66, Fax +43 1 513 43 07  
galerie@schwarzwaelder.at, www.schwarzwaelder.at



**ALEXANDER APÓSTOL**

**ART & LANGUAGE**

**ATELIER VAN LIESHOUT**

**17 APR - 5 JUN**

**JOSÉ MANUEL BALLESTER**

**NAIA DEL CASTILLO**

**FILIPA CÉSAR**

**JOSÉ DAMASCENO**

**RICHARD DEACON**

**PIA FRIES**

**SEBASTIÁN GORDÍN**

**IÑAKI GRACENEA**

**MAIDER LÓPEZ**

**JORGE MACCHI**

**MIQUEL MONT**

**FELICIDAD MORENO**

**HARALD F. MÜLLER**

**12 JUN - 26 JUL**

**MATTHIAS MÜLLER**

**FERNANDO RENES**

**JAMES RIELLY**

**ADRIAN SCHIESS**

**LAURIE SIMMONS**

**RUI TOSCANO**

**MARTIN WALDE**

**PETER ZIMMERMANN**

**distrito**cu4tro  
G A L E R I A D E A R T E

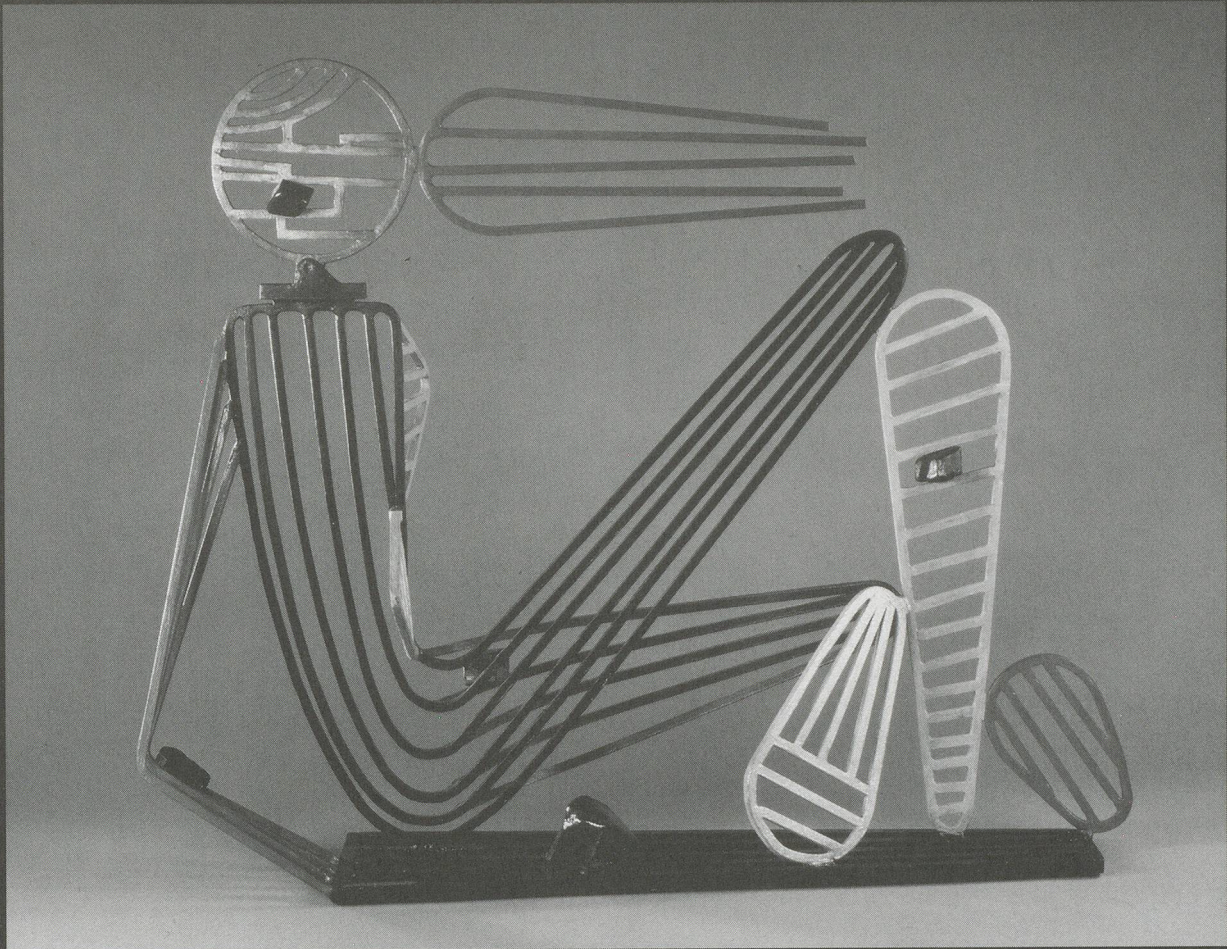
BÁRBARA DE BRAGANZA, 2 E-28004 MADRID - SPAIN T. +34 91 319 85 83 info@distrito4.com www.distrito4.com



# DAVID SMITH

Working Surface

Drawing, Painting, Sculpture: 1932 - 1963



June - July 2008

**galerie gmurzynska zurich**

Paradeplatz 2 · 8001 Zurich · Switzerland

Phone +41 44 226 70 70 · Fax +41 44 226 70 90

[www.gmurzynska.com](http://www.gmurzynska.com) · [galerie@gmurzynska.com](mailto:galerie@gmurzynska.com)



In Geneva  
No One Can  
Hear You  
Scream  
13\_03\_08-  
26\_04\_08

fabrice  
gygi  
10\_11\_07-  
17\_01\_08

louise  
lawler  
13\_09\_07-  
20\_10\_07

jim  
shaw  
24\_05\_07-  
14\_07\_07

jerry  
phillips  
dike blair  
15\_03\_07-  
05\_05\_07

rhona  
bitner  
14\_09\_06-  
21\_10\_06

FACES  
18\_05\_06-  
22\_07\_06

martin  
bigum  
16\_03\_06-  
29\_04\_06

alex  
brown  
16\_09\_05-  
22\_10\_05

alessandro  
twombly  
20\_01\_05-  
05\_03\_05

dan  
mccarthy  
16\_09\_04-  
23\_10\_04

raymond  
pettibon  
18\_03\_04-  
01\_05\_04

jean-luc  
verna  
18\_03\_04-  
01\_05\_04

kiki  
lamers  
20\_11\_03-  
20\_12\_03

manie  
holst  
18\_09\_03-  
25\_10\_03

louise  
lawler  
20\_03\_03-  
03\_05\_03

[www.bfasblondeau.com](http://www.bfasblondeau.com)



raymond  
pettibon  
punk epocha

70 drawings from the Eighties

22\_05\_08—  
19\_07\_08

5  
7  
8  
1  
0  
3  
6  
0

BFAS  
Blondeau Fine Art Services

5 rue de la Muse  
1205 Geneva - Switzerland  
T +41 (0)22 544 95 95  
F +41 (0)22 544 95 99  
philippe@bfasblondeau.com

■ exhibition  
THU-FRI 14h-18h30  
SAT 11h-17h  
■ office  
MON-FRI 9h-12h30 / 14h-18h30



JUNE 2 - AUGUST 16 2008

# KENDELL GEERS

OPENING PARTY AND PERFORMANCE SATURDAY MAY 31



de PURY & LUXEMBOURG

LIMMATSTRASSE 264 8005 ZÜRICH [DEPURLUXEMBOURG.COM](http://DEPURLUXEMBOURG.COM) TEL +41 44 276 80 20 FAX +41 44 276 80 21





ANTONY **GORMLEY**  
DRAWINGS 1981 TO 2001

MAY 2008

**GALERIE THADDAEUS ROPAC**  
7 RUE DEBELLEyme 75003 PARIS TEL: 331 4272 9900 FAX: 331 4272 6166 WWW.ROPAC.NET





**robert rauschenberg**

*gluts*

**darryl pottorf**

*paintings*

april 19 – juni 28, 2008

**georg baselitz**

september – oktober, 2008

**art|39|basel|4-8|6|08**

**galerie jamileh weber**

waldmannstrasse 6 · ch-8001 zürich

tel +41 44 252 10 66 · fax +41 44 252 11 32

www.jamilehweber.com · info@jamilehweber.com



Tom Sachs

"ANIMALS"

Bösendorfer  
MAY 8, 2008

SPERONE WESTWATER  
415 W 13th st  
NEW YORK, NY



ROBERT FRANK  
WADE GUYTON  
CHRISTOPHER WOOL

COLLABORATION ARTISTS PARKETT 83



**LOUISE BOURGEOIS**  
TRACEY EMIN  
ROBERT STORR  
GRISELDA POLLOCK

**PAWEŁ ALTHAMER**  
CATHERINE WOOD  
MASSIMILIANO GIONI  
ADAM SZYMCZYK

**RACHEL HARRISON**  
RICHARD HAWKINS  
INA BLOM  
GEORGE BAKER  
ALISON M. GINGERAS

KENNETH GOLDSMITH  
ON **UBU WEB**  
SUZANNE HUDSON  
ON **ESALEN**  
JEREMY SIGLER  
ON **BROCK ENRIGHT**

CUMULUS FROM EUROPE:  
**MARK VON SCHLEGEL**  
CUMULUS FROM OVERSEAS:  
**CATHERINE CHEVALIER**  
BALKON:  
**JAN VERWOERT**

This issue of Parkett eloquently testifies to the youthfulness of the work of Louise Bourgeois (\*1911), seen alongside the output of her much younger colleagues Rachel Harrison (\*1976) and Paweł Althamer (\*1967). Common to all three artists is a reinvigorated commitment to the "good old-fashioned" image of man.

Louise Bourgeois's studies, though saturated with personal history, embody a supra-individual veracity that transcends time in her sculptures, environments, and drawings. At an early stage, Paweł Althamer began incorporating himself in his art as a naked, realistic, "disarmed" individual. He walks an imaginary and existentially transgressive line within the social fabric—not least in order to elicit astonishment and wonder. Rachel Harrison's grotesque sculptures amalgamate the materials of our (consumer) world. For all their lack of domestication, they consciously bear traces of their stalwart origins as likeness, statue and memorial.

In der vorliegenden Parkett-Ausgabe lässt sich überprüfen, wie jung sich das Werk von Louise Bourgeois (\*1911), neben den aktuellen Stimmen von Rachel Harrison (\*1976) und Paweł Althamer (\*1967) ausnimmt. Allen gemeinsam ist eine von neuen Energien getriebene Beschäftigung mit dem, was ein bisschen altmodisch das «Menschenbild» genannt wird.

Louise Bourgeois' persönlich getränkte Aufarbeitungen münden in überindividuell wahre, die Zeit überragende Werke – Skulpturen, Environments und Zeichnungen. Paweł Althamer führte früh sein Ebenbild in die Kunst ein, nackt und realistisch als «entwaffnetes» Individuum, das eine imaginäre, existenziell grenzübergreifende Linie im sozialen Gewebe abschreitet. Nicht zuletzt mit dem Ziel, damit Staunen und Wunder auszulösen. Rachel Harrisons groteske Skulpturen sind Gebilde, Amalgame aus dem Stoff dieser (Konsum-)Welt. So wild sie sich geben, sie tragen bewusst die Spuren ihrer strammen Herkunft als Standbild, Statue und Denkmal in sich.

5 3 2 0 0  
ISBN 978-390758242-8  
9 783907 582428

