

Zeitschrift: Parkett : the Parkett series with contemporary artists = Die Parkett-Reihe mit Gegenwartskünstlern
Herausgeber: Parkett
Band: - (2003)
Heft: 68: [Collaborations] Franz Ackermann, Eija-Liisa Ahtila, Dan Graham

Werbung

Nutzungsbedingungen

Die ETH-Bibliothek ist die Anbieterin der digitalisierten Zeitschriften auf E-Periodica. Sie besitzt keine Urheberrechte an den Zeitschriften und ist nicht verantwortlich für deren Inhalte. Die Rechte liegen in der Regel bei den Herausgebern beziehungsweise den externen Rechteinhabern. Das Veröffentlichen von Bildern in Print- und Online-Publikationen sowie auf Social Media-Kanälen oder Webseiten ist nur mit vorheriger Genehmigung der Rechteinhaber erlaubt. [Mehr erfahren](#)

Conditions d'utilisation

L'ETH Library est le fournisseur des revues numérisées. Elle ne détient aucun droit d'auteur sur les revues et n'est pas responsable de leur contenu. En règle générale, les droits sont détenus par les éditeurs ou les détenteurs de droits externes. La reproduction d'images dans des publications imprimées ou en ligne ainsi que sur des canaux de médias sociaux ou des sites web n'est autorisée qu'avec l'accord préalable des détenteurs des droits. [En savoir plus](#)

Terms of use

The ETH Library is the provider of the digitised journals. It does not own any copyrights to the journals and is not responsible for their content. The rights usually lie with the publishers or the external rights holders. Publishing images in print and online publications, as well as on social media channels or websites, is only permitted with the prior consent of the rights holders. [Find out more](#)

Download PDF: 04.04.2026

ETH-Bibliothek Zürich, E-Periodica, <https://www.e-periodica.ch>

A black and white close-up photograph of a woman's face, looking slightly to the right with a subtle expression. Her hair is dark and pulled back. The lighting is dramatic, with strong shadows on the left side of her face.

Eija-Liisa Ahtila

is represented by

Klemens Gasser & Tanja Grunert, Inc.

524 West 19th Street | New York, NY 10011 | info@gassergrunert.net | tel: 212.807.9494 | fax: 212.807.6594

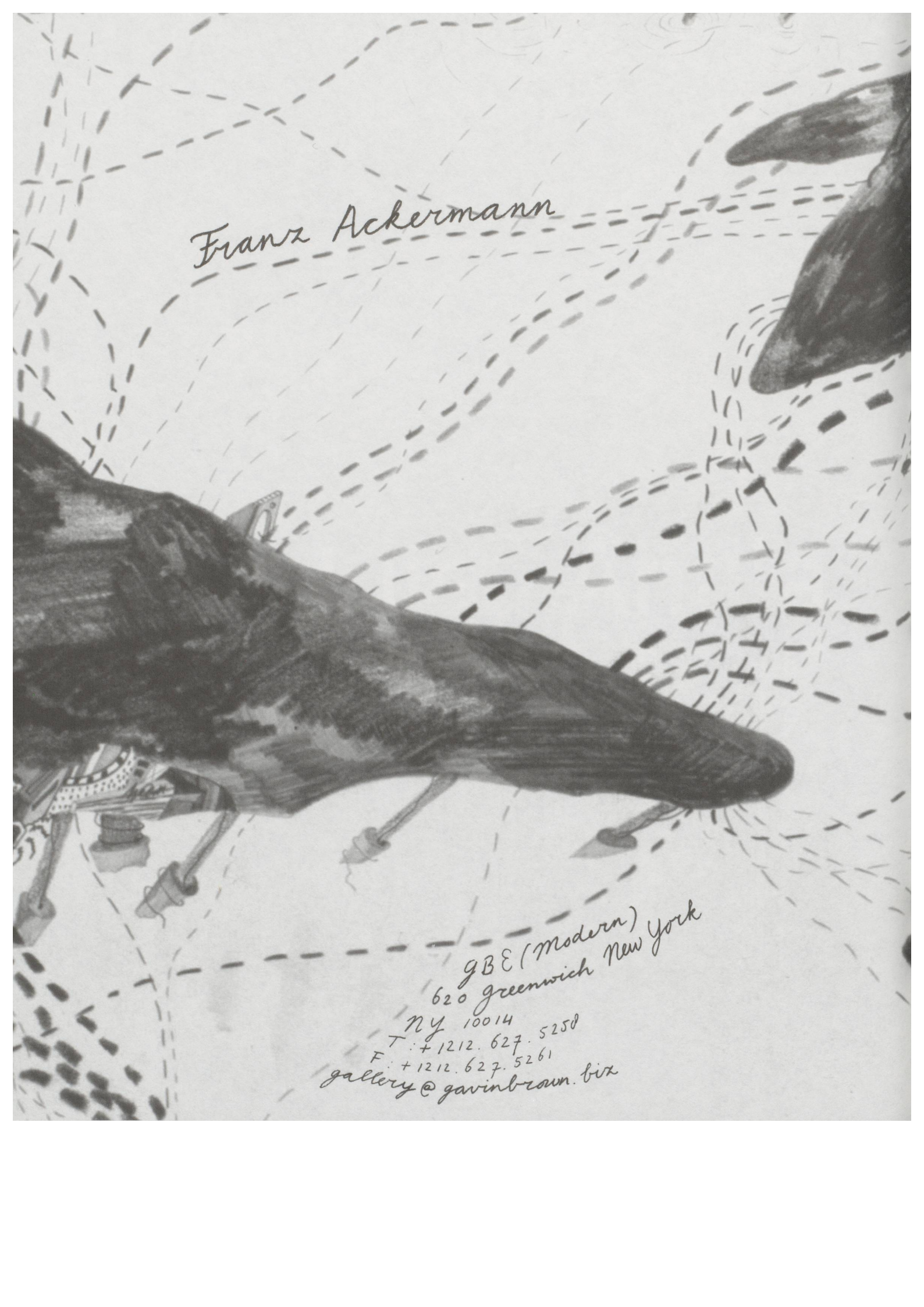
CARLA ACCARDI
GHADA AMER
VANESSA BEECROFT
DANIEL BUREN
JOTA CASTRO
PAOLO CHIASERA
DAN GRAHAM
ANISH KAPOOR
PETER HALLEY
SOL LEWITT
EVA MARISALDI
RYAN MENDOZA
MATHIEU MERCIER
SABRINA MEZZAQUI
LUIGI ONTANI
GIULIO PAOLINI
GERWALD ROCKENSCHAUB
ETTORE SPALLETTI
BEAT STREULI
DIDIER VERMEIREN



Dan Graham, "Labyrinth II", installation view November 2002

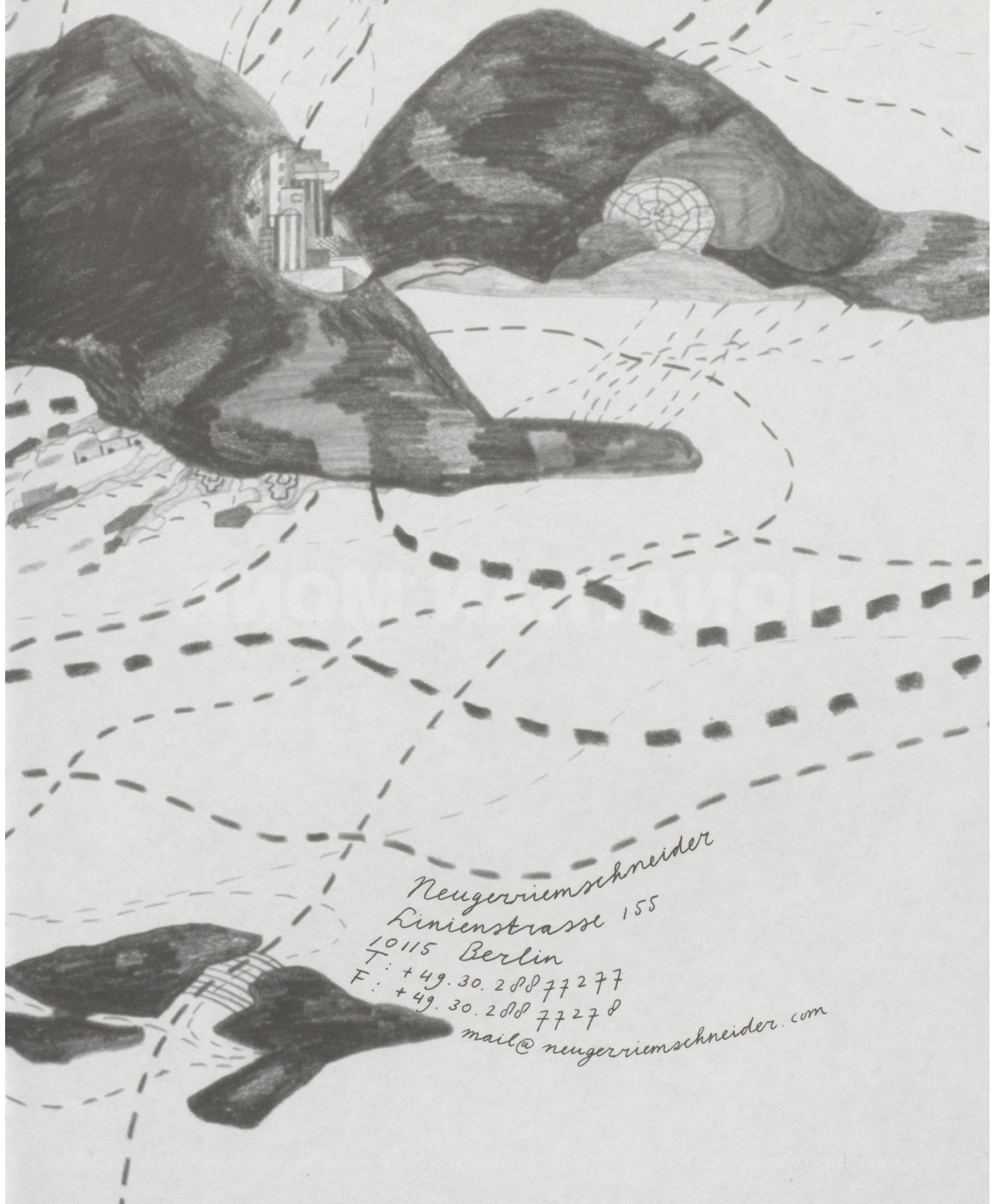
GALLERIA MASSIMO MININI

Via Apollonio 68 - 25128 Brescia (I)
P.: +39.030.383034; F: +39.030.392446
galleriaminini@numerica.it
www.galleriaminini.it



Franz Ackermann

gBE (Modern)
620 Greenwich New York
NY 10014
T: +1212.627.5258
F: +1212.627.5261
gallery@gavinbrown.biz



Neugewiemerschneider
Kienienstrasse 155
10115 Berlin
T: +49.30.28877277
F: +49.30.28877278
mail@neugewiemerschneider.com

JONATHAN MONK

CASEY KAPLAN YVON LAMBERT LISSON GALLERY LONDON Meyer Riegger Galerie GALLERI NICOLAI WALLNER

MAI 36 GALERIE

FRANZ ACKERMANN
IAN ANÜLL
JOHN BALDESSARI
MATTHEW BENEDICT
STEPHAN BALKENHOL
TROY BRAUNTUCH
ANKE DOBERAUER
PIA FRIES
ANDREAS GURSKY
RITA MCBRIDE
HARALD F. MÜLLER
MATT MULLICAN
MANFRED PERNICE
MAGNUS VON PLESSEN
GLEN RUBSAMEN
CHRISTOPH RÜTIMANN
THOMAS RUFF
JÖRG SASSE
PAUL THEK
LAWRENCE WEINER
RÉMY ZAUGG

THOMAS RUFF

3. Oktober – 15. November 2003

Frieze Art Fair London

17. – 20. 10.2003

Pia Fries

21. November 2003 – 10. Januar 2004

Art | Basel | Miami Beach

4. – 7. 12.2003

Rämistrasse 37, CH-8001 Zürich, www.artgalleries.ch/mai36
Tel. +41 1 261 68 80, Fax +41 1 261 68 81, mai36@artgalleries.ch

Sol LeWitt: Wall Drawing for 192 Books

July 17–September 20

192 Tenth Avenue

Sol LeWitt: New Gouaches

September 6–October 4

534 West 21st Street

Julian Lethbridge: New Paintings

September 19–October 18

521 West 21st Street

Mark di Suvero: Sculpture and Drawings

October 11–November 15

534 West 21st Street

Kelley Walker

October 25–November 15

521 West 21st Street

Paula Cooper Gallery

T 212 255 1105 F 212 255 5156

HAUSER & WIRTH LONDON OPENING OCTOBER 2003



HAUSER & WIRTH LONDON
196A PICCADILLY, LONDON W1

11 SEPTEMBER - 26 OCTOBER 2003

William Eggleston
From the Seventies

11 SEPTEMBER - 26 OCTOBER 2003

Phillip Allen

8 - 13 OCTOBER 2003

FIAC Paris

13 NOVEMBER 2003 - 11 JANUARY 2004

Peter Rogiers

13 NOVEMBER 2003 - 11 JANUARY 2004

Stephen Wilks

4 - 7 DECEMBER 2003

Art Basel Miami Beach

Xavier Hufkens

Sint-Jorisstraat 6-8 rue Saint-Georges

Brussel 1050 Bruxelles

TEL. 32 (0)2 639 67 30 - FAX 32 (0)2 639 67 38

info@xavierhufkens.com

www.xavierhufkens.com

Open Tuesday to Saturday, noon to 6 pm

NEW YORK

RINEKE DIJKSTRA

SEPTEMBER 10 – OCTOBER 11, 2003

NIELE TORONI

SEPTEMBER 10 – OCTOBER 11, 2003

GABRIEL OROZCO

OCTOBER 14 – NOVEMBER 22, 2003

TONY CRAGG

DECEMBER 2, 2003 – JANUARY 10, 2004

PARIS

CRISTINA IGLESIAS

SEPTEMBER 13 – OCTOBER 25, 2003

THOMAS STRUTH

NOVEMBER/DECEMBER 2003

MARIAN GOODMAN GALLERY

24 WEST 57TH STREET NEW YORK, NY 10019
TEL: 212-977-7160 FAX: 212-581-5187

GALERIE MARIAN GOODMAN

79, RUE DU TEMPLE PARIS, FRANCE 75003
TEL: 33-1-4804-7052 FAX: 33-1-4027-8137

WWW.MARIANGOODMAN.COM



GILLIAN WEARING October – November 2003

MAUREEN PALEY Interim Art. 21 Herald Street, London E2 6JT. Telephone: 44 (0)20 7729 4112 Fax: 44 (0)20 7729 4113

September - November

*Sculpture: Peter Fischli David Weiss, Katharina Fritsch, Robert Gober,
Donald Judd, Ellsworth Kelly, Ugo Rondinone, Tony Smith

*Ken Price

November - January

*Terry Winters: Paintings and Drawings

*Robert Adams: *No Small Journeys: Photographs 1974 to 1984*

Matthew Marks Gallery

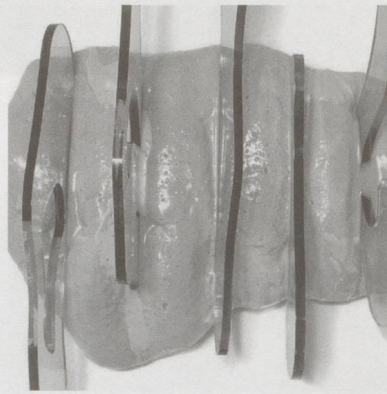
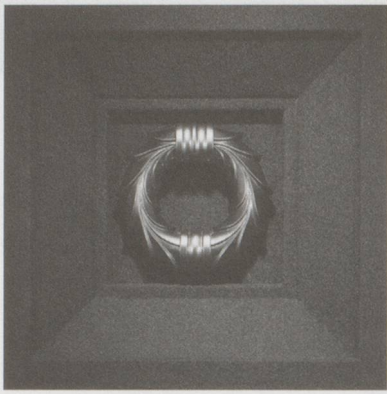
523 w 24 Street 522 w 22 Street New York 10011

Tel. 212 243 0200 Fax. 212 243 0047

www.matthewmarks.com

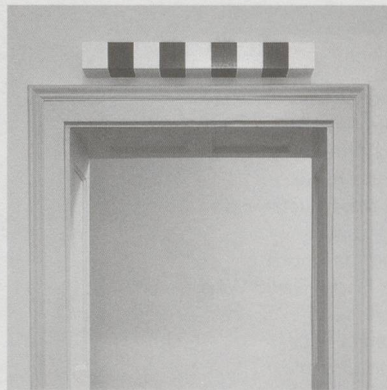
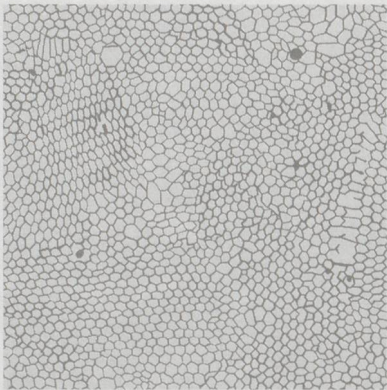
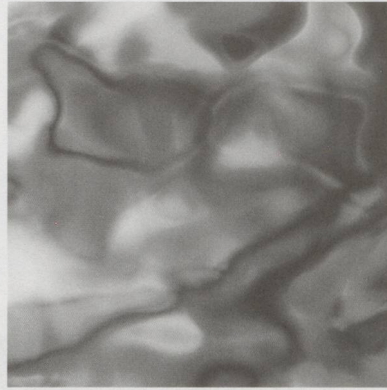
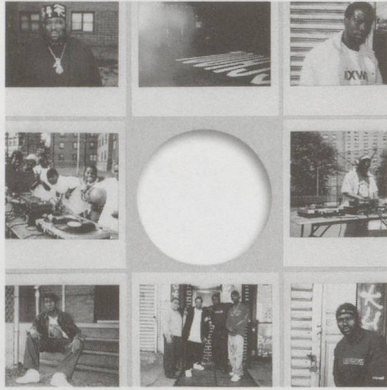
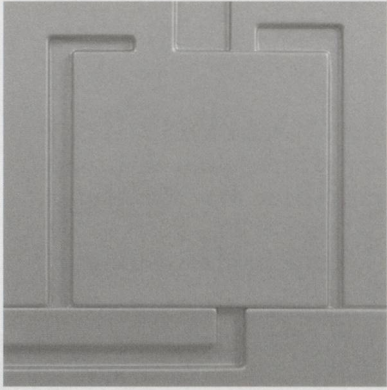
Robert Adams
Darren Almond
David Armstrong
Nayland Blake
Jean-Marc Bustamante
Peter Cain
Willem de Kooning
Peter Fischli David Weiss
Lucian Freud
Katharina Fritsch
Robert Gober
Nan Goldin
Andreas Gursky
Jonathan Hammer
Martin Honert
Roni Horn
Peter Hujar
Gary Hume
Ellsworth Kelly
Inez van Lamsweerde
Brice Marden
Hellen van Meene
Tracey Moffatt
Ken Price
Ugo Rondinone
Tony Smith
Sam Taylor-Wood
Terry Winters

Detail: Terry Winters Change of State, 2000



**Edition
Schellmann**

München
Tel
+89-331717
Fax
+89-332800
New York
Tel
+212-2191821
Fax
+212-9419206



www.editionschellmann.com

**Julian LaVerdiere
Peter Halley
Rachel Whiteread**

**Sylvie Fleury
Pierre Huyghe
Luc Tuymans**

**Tobias Rehberger
Thomas Ruff
Daniel Buren**

AUSSTELLUNG: 20. SEPTEMBER - 8. NOVEMBER 2003

KIKI SMITH

NEAR

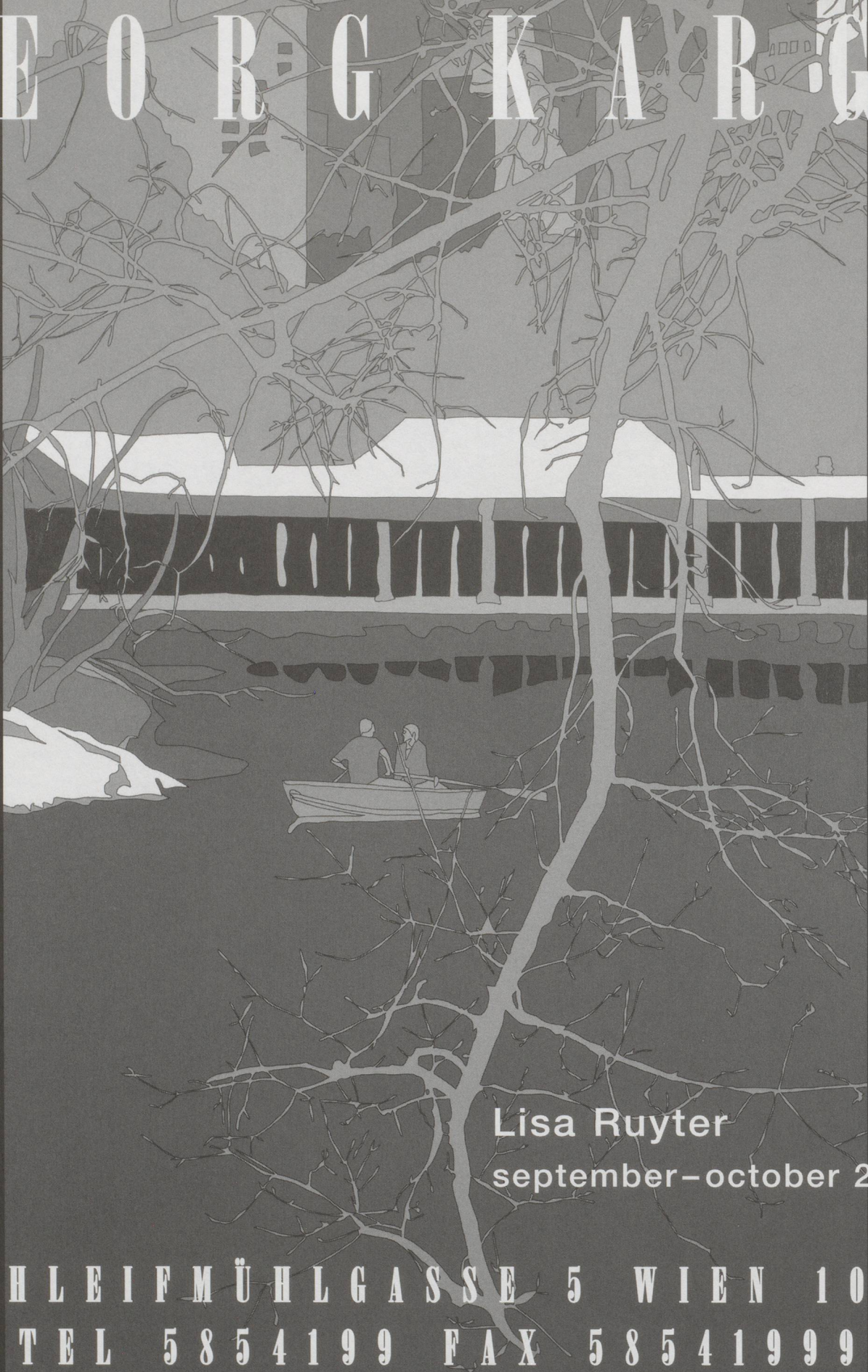


GALERIE LELONG ZÜRICH

Utoquai 31 • CH-8008 Zürich • T+41-1-251 11 20 • F+41-1-262 52 85 • E-Mail: galerie.lelong@dplanet.ch

G E O R G K A R G I

Lisa Ruyter, "Behind the green door", 2003, acrylic on canvas, 152,5 x 91,5 cm, courtesy: Georg Kargl, Vienna



ART FORUM
BERLIN

1.-5.10.03

FRIEZE
ART
FAIR

17.-20.10.03

Lisa Ruyter

september - october 2003

S C H L E I F M Ü H L G A S S E 5 W I E N 1 0 4 0

T E L 5 8 5 4 1 9 9 F A X 5 8 5 4 1 9 9 9

GALERIA ■ HELGA DE ALVEAR

DR. FOURQUET 12, 28012 MADRID.TEL:(34) 91 468 05 06 FAX:(34) 91 467 51 34
e-mail:galeria@helgadealvear.net www.helgadealvear.net

September 18 - November 1

T H O M A S D E M A N D
T E R E S I T A F E R N Á N D E Z

October

A n a c t i o n b y S A N T I A G O S I E R R A

November 6, 2003 - January 10, 2004

J Ü R G E N K L A U K E
J O S É P E D R O C R O F T

January - February

P R U D E N C I O I R A Z Á B A L
K I M S O O J A

March - May

M I T S U O M I U R A
P H I L I P - L O R C A D I C O R C I A

May - June

I S A A C J U L I E N

GEORGE CONDO

SCULPTURE

SEPTEMBER – NOVEMBER 2003

WOLFGANG LAIB

NOVEMBER 2003 – FEBRUARY 2004

CARATSCH de PURY & LUXEMBOURG

LIMMATSTRASSE 264 CH-8005 ZÜRICH INFO@DPLZH.COM
T 41-1-276 80 20 F 41-1-276 80 21 MO-FR 10-6 SA 10-4

kiki

lamers

20 11 03

20 12 03

5
7
0
2
0
1
0
3
0

'Works from 1996 to 2003'

Exhibition in collaboration with Annet Gelink Gallery, Amsterdam

■ BFAS
Blondeau Fine Art Services

5 rue de la Muse
1205 Geneva _ Switzerland
T +41 (0)22 544 95 95
F +41 (0)22 544 95 99

■ contact _ Philippe Davet
philippe@bfasblondeau.com

■ exhibition
TUE-FRI 14h-18h30
SAT 11h-17h
■ office
MON-FRI 9h-12h30 / 14h-18h30

Dario**URZAY**

September 10th-October 11th, 2003

James**RIELLY**

October 16th-November 20th, 2003

Alex**HARTLEY**

November 25th-December 31st, 2003

Felicidad**MORENO**

January 8th-February 7th, 2004

distritocu**4**tro

G A L E R I A D E A R T E

Bárbara de Braganza, 2
E-28004 MADRID (Spain)

Tel. + 34 91 308 34 83
Fax: + 34 91 308 34 85

e-mail:info@distrito4.com
www.distrito4.com

20 • 21

Galerie Edition Kunsthandel GmbH
Meisenburgstraße 169–173
45133 Essen
Tel. +49 201 87100-0
Fax +49 201 87100-10
info@2021art.com
www.2021art.com

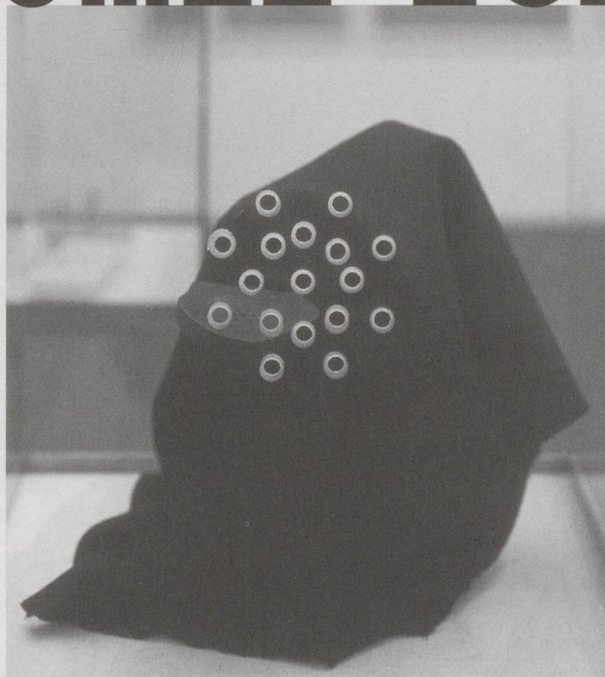
Di–Fr 10–18 · Sa 11–16
und nach Vereinbarung

Matthias Hoch

20 | 9 – 14 | 11 | 2003

Bogomir Ecker

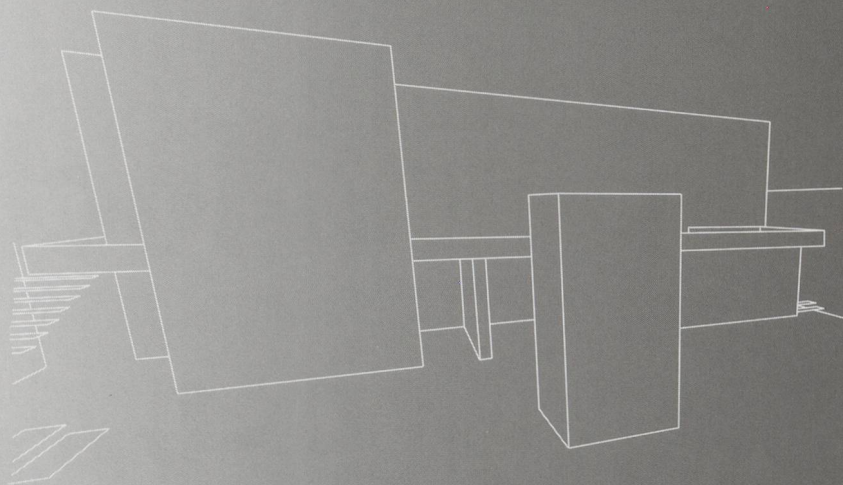
Dezember: Martin Parr



Tom Sachs

new paintings

october - november, 2003
GALLERIA CARDI



GALLERIA CARDI & CO
CORSO DI PORTA NUOVA, 38
I - 20121 MILANO
T. +39 02 62690945
F. +39 02 62694016

GALLERIA CARDI
PIAZZA S. ERASMO, 3
I - 20121 MILANO
T. +39 02 29003235
F. +39 02 29003382

WWW.GALLERIACARDI.COM
INFO@GALLERIACARDI.COM

Donald Baechler
Bertozzi & Casoni
Alighiero Boetti
Greg Bogin
Maurizio Cannavacciuolo
Francesco Clemente
Greg Colson
Wim Delvoye
Nicola De Maria
Kim Dingle
Graham Gillmore
Toland Grinnell
Peter Halley
Guillermo Kuitca
Wolfgang Laib
Jonathan Lasker
Richard Long
Malcolm Morley
Vik Muniz
Mc Dermott & Mc Gough
Tom Sachs
David Salle
Julian Schnabel
Philip Taaffe
Richard Tuttle
Not Vital
Andy Warhol
William Wegman

G A L E R I E M E E R T R I H O U X

CARLA ACCARDI
ROBERT ADAMS
MARIO AIRÒ
JOHN BALDESSARI
ROBERT BARRY
IÑAKI BONILLAS
ENRICO CASTELLANI
HANNE DARBOVEN
MARIA ANNA DEWES
SYLVIE EYBERG
ISA GENZKEN
JEFGGEYS
MIMMO JODICE
PETER JOSEPH
DONALD JUDD
LOUISE LAWLER
SOL LEWITT
ROBERT MANGOLD
EVA MARISALDI
LILIANA MORO
FRED SANDBACK
THOMAS STRUTH
GRAZIA TODERI
RICHARD TUTTLE
MICHAEL VENEZIA
IAN WALLACE

>

SEPT - OCT

RUE DU CANAL 13
1000 BRUXELLES
VAARTSTRAAT 13
1000 BRUSSEL
TEL 32(0)2 219 14 22
FAX 32(0)2 219 37 21
GRETA.MEERT@SKYNET.BE

BERLIN JOHANNESBURG HONG KONG PARIS

Carlos Amorales Biennale di Venezia, Dutch Pavilion

Ruedi Bechtler

Nic Hess Walker Art Center

Yoko Ono Samsung

Bülent Sangar Kunsthalle Fridericianum

Javier Téllez Biennale di Venezia Museo de Carrillo Gil

Minnette Vári Kunstmuseum Luzern 2004

MEXICO BAGES TORONTO SEOUL

www.zieglergalerie.com
info@zieglergalerie.com

SERGE ZIEGLER GALERIE

CAROLINA NITSCH CONTEMPORARY ART

is pleased to announce the publication of a Book and a Deluxe Edition by

LAURIE SIMMONS



IN AND AROUND THE HOUSE

PHOTOGRAPHS 1976 - 78

CAROLINA NITSCH EDITIONS HATJE CANTZ

A seminal book by one of the first artists of the Pictures generation to use set-up photography to create images with intensely psychological subtexts. 57 full-page photographs, essay by Carol Squiers and autobiographical account by Laurie Simmons. Published by Carolina Nitsch and Hatje Cantz, distributed in the U.S.A. by D.A.P., Hardcover, clothbound, 96 pages, 25 x 29,5 cm, \$39.99/Euro 35.-. Available also in a Deluxe Edition of 120 copies with an original photograph of «Woman listening to the Radio», signed and numbered by Laurie Simmons.

For more information and orders please contact us at:

101 WOOSTER STREET NEW YORK NY 10012 • BY APPOINTMENT

TEL 212 966 4095 • FAX 212 226 0862

WWW.ARTNET.COM/CNITSCH.HTML • ACNITSCH@AOL.COM

**ABONNIEREN SIE EINE GROSSE BIBLIOTHEK
UND EIN KLEINES MUSEUM MIT GEGENWARTS-
KÜNSTLERN.**

**SUBSCRIBE TO A LARGE LIBRARY AND A SMALL
MUSEUM WITH CONTEMPORARY ARTISTS.**

Bitte benützen Sie die
Bestellkarte, die
diesem Band beiliegt,
und schicken Sie diese
an folgende Adresse:

Please use the order
form enclosed in this
issue and send it to the
following address:

PARKETT
Quellenstrasse 27
CH-8031 Zürich
Tel. 41-1-271 81 40
Fax 41-1-272 43 01

PARKETT

PARKETT
155 Avenue of the Americas
2nd floor
New York, NY 10013
phone (212) 673 2660
fax (212) 271 0704

THE PARKETT-SERIES WITH CONTEMPORARY ARTISTS · DIE PARKETT REIHE MIT GEGENWARTSKÜNSTLERN

www.parkettart.com

John M Armleder

Christoph Büchel

Thomas Hirschhorn

Jean-Luc Manz

Sylvie Fleury

Gaylen Gerber

Thom Merrick

Rolf Graf

Olivier Mosset

Peter Z. Herzog

Gerwald Rockenschaub

Adrian Schiess

Muntean / Rosenblum

Galerie Susanna Kulli

Davidstrasse 40 · CH-9000 St.Gallen · Tel. 071 223 59 58 · Fax 071 223 59 35

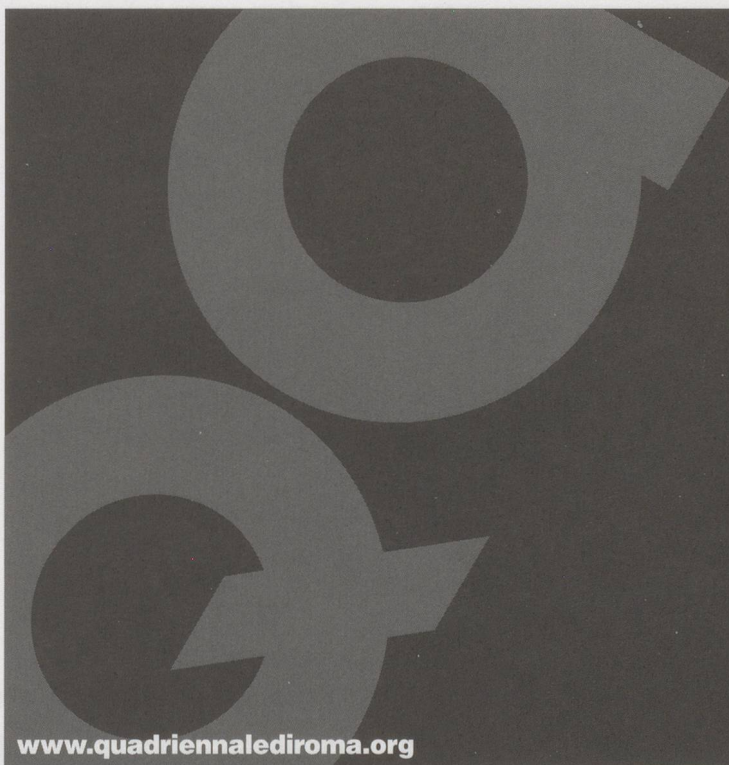
ab Februar 2004: Dienerstrasse 21 · CH-8004 Zürich

www.susannakulli.ch · Offen: Di bis Fr 14–18 · Sa 11–17

gallery bob van orsouw limmatstrasse 270 8005 zurich
phone +41-01 273 11 00 fax +41-01 273 11 02 mail@bobvanorsouw.ch

august 23
until
october 11, 2003 **julian opie** new films and paintings

october 25
until
december 20, 2003 **paint** david chieppo, annelise coste, lutz/guggisberg,
hanspeter hofmann, markus weiss u.a.



XIV
Quadriennale
Qq
anteprima

Italian
contemporary
art
Napoli - Palazzo Reale

www.quadriennalediroma.org

14 NOVEMBER 2003 - 11 JANUARY 2004

GALERIE



BOB



GYSIN



WWW.BG-GALERIE.CH


AUSSTELLUNGSSTRASSE 24, 8005 ZÜRICH

T +41-1-278 40 60—F +41-1-278 40 50—INFO@BG-GALERIE.CH

Christoph Schreiber - Im Nebel wühlen
21. August - 25. Oktober 2003

Gisela Kleinlein - Reihen
7. November - 27. Dezember 2003

DI-FR 13-18—SA 11-16

lehmann leskiw  schedler
fine art

Lehmann Leskiw + Schedler
Fine Art Warth Zürich Toronto
Schedler, Aktiengesellschaft

Dorfstrasse 56
CH 8532 Warth

office:
Josefstrasse 77
CH 8005 Zürich
T +41 1 440 61 20
F +41 1 440 61 21
galerie@schedler.ch

626 Richmond Street West
Toronto, Ontario M5V1Y9
T +1 416 922 1914
F +1 416 922 1915
toronto@l-l-s.com

Peter Aspell

Stephen Barker

Jan Czerwinski

Matthew Dayler

Martin Fivian

Allen Frame

Max Grüter

Dieter Hall

Christoph Hänsli

Cherry Hood

Marcus Leatherdale

Margaret Morgan

Andrea Muheim

Richard Müller

Walter Pfeiffer

Eliane Rutishauser

Gyle Ryon

James Sheehan

Philipp Späti

Karlheinz Weinberger

Rodney White

Chantal Wicki

Pascale Wiedemann

Hans Witschi

www.schedler.ch / www.l-l-s.com
Member of
Association of Swiss Galleries AGS

ART COLOGNE 2003: JAMES SHEEHAN

BERNIER / ELIADES

11, EPTACHALKOU, GR-11851 ATHENS • TEL: + 30 210 341 39 35-7, FAX: + 30 210 341 39 38
E-mail: bernier@bernier-eliades.gr • www.bernier-eliades.gr

THOMAS SCHÜTTE

OCTOBER-NOVEMBER, 2003

JOHN BALDESSARI

DECEMBER 2003-JANUARY 2004

23. AUGUST BIS 11. OKTOBER 2003

UGO RONDINONE

MOONRISE

25. OKTOBER- 20. DEZEMBER 2003

VERNE DAWSON

**DOUG AITKEN - EMMANUELLE ANTILLE - ANGELA BULLOCH - VERNE DAWSON - MARIA EICHHORN
URS FISCHER - PETER FISCHLI / DAVID WEISS - SYLVIE FLEURY - LIAM GILICK - CANDIDA HÖFER - RONI HORN - KAREN KILIMNIK
GERWALD ROCKENSCHAUB - UGO RONDINONE - DIETER ROTH - JEAN-FRÉDÉRIC SCHNYDER - BEAT STREULI - FRANZ WEST - SUE WILLIAMS**

GALERIE HAUSER & WIRTH & PRESENHUBER

Limmatstrasse 270, 8005 Zürich / Tel: +41 1 446 80 60, Fax: +41 1 446 80 65 / www.ghwp.ch / Öffnungszeiten: Di-Fr 12-18, Do -20, Sa 11-16 Uhr

Oladélé Bamgboye Mark Leckey

23rd August - 2nd November 2003

Art & Language

15th November - February 2004

 BRITISH COUNCIL **migrosmuseum**
FÜR GEGENWARTSKUNST
ZÜRICH

Tue/Wen/Fri 12am-6pm, Thu 12am-8pm, Sat/Sun 11am-5pm, Limmatstrasse 270, 8005 Zürich, T +41 1 277 20 50, F +41 1 277 62 86,
www.migrosmuseum.ch, info@migrosmuseum.ch

The exhibition "Oladélé Bamgboye" is a project by Next Flag reexistência cultural generalizada an african sniper project for european spaces

Charles Sheeler

6.9. - 2.11.2003

American Modernist

The Dr. Ikkaku Ochi Collection

Medical Photographs from Japan
around 1900

The new Centre of Photography in
Winterthur: from 15 November 2003

Order and Chaos

15.11.03 - 8.2.2004

With: Sonja Braas, Nanna H., Marjaana Kella,
Ines Lombardi, Marianne Müller, Juha Nenonen,
Sophy Rickett and Janaina Tschäpe

Cold Play

Set 1 from the collection of the
Fotomuseum Winterthur

FOTOMUSEUM WINTERTHUR

Grüzenstrasse 44
CH-8400 Winterthur

Tel: 052/233 60 86
www.fotomuseum.ch

Di - Fr 12 - 18 Uhr, Mi 12 - 19.30 Uhr
Sa/So 11 - 17 Uhr

Brice Marden

June 14, 2003 – January 4, 2004

DAROS EXHIBITIONS

Löwenbräu-Areal
Limmatstrasse 268
CH-8005 Zurich

T: +41 1 447 70 00
F: +41 1 447 70 10
www.daros.ch

OPENING HOURS

Thursday and Friday
3 p.m. to 7 p.m.
Saturday and Sunday
1 p.m. to 5 p.m.

September 6
(Lange Nacht der Museen)
7 p.m. to 2 a.m.

December 25 and January 1
closed
December 26 and January 2
1 p.m. to 5 p.m.

D A R O S



franz gertsch
patti smith
09.08. —
26.10.03
■
++41-34-421 40 20
www ■ museum-franzgertsch ■ ch

museum **franz gertsch**

christopher
muller

fotografie

9.8. —

5.10.2003

contemporary fine art

galerie **im park**

technikumstrasse 2
ch-3400 burgdorf

fon
+41-34-421 40 22

fax
+41-34-421 40 23

info@galerieimpark.ch

www.galerieimpark.ch

mi bis fr 15–19 uhr

sa und so 13–17 uhr

gestaltung

botschaftnolte.info@botschaftnolte.de

galerie im park

A SMALL MUSEUM AND A LARGE LIBRARY WITH CONTEMPORARY ARTISTS

PARKETT

For further information on subscriptions,
back issues and editions, please contact the office nearest you:

PARKETT VERLAG · QUELLENSTR. 27 · 8031 ZÜRICH
TELEFON +41-1-271 81 40 · FAX +41-1-272 43 01

PARKETT · 155 AV. OF THE AMERICAS · N.Y. 10013
PHONE 212 - 673 2660 · FAX 212 - 271 0704

WWW.PARKETTART.COM

Portuguese Ministry of Culture | Institute of Contemporary Art | Serralves Museum of Contemporary Art

Portuguese
Pavilion

50th Venice Biennial
2003

pedro CABRITA REIS

curated by
Vicente Todolí
João Fernandes

MC
Ministério da Cultura

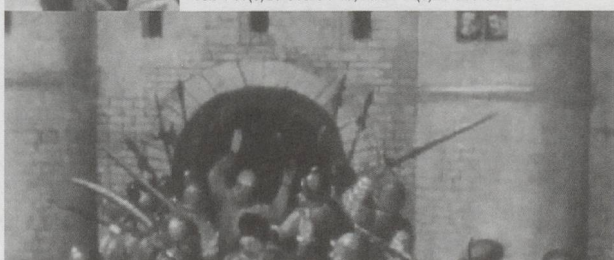
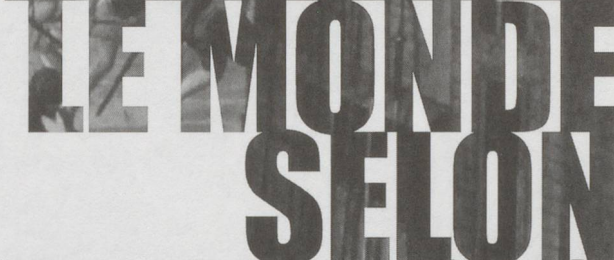
IAC
Instituto de Arte Contemporânea

FUNDAÇÃO SERRALVES

50ESIMA
ESPOSIZIONE
INTERNAZIONALE
D'ARTE

Portuguese Pavilion 13.06 - 29.09.2003 11 a.m. / 7 p.m., closing day Monday
Giudecca, 8 (Antichi Granai) 30133 Venice Italy
T + 39 041 296 05 74 F + 39 041 296 05 82

Portuguese Representation T + 351 21 361 45 08 F + 351 21 364 98 72
portugalbiennalevenezia2003@min-cultura.pt www.pedrocabritareis.com



AARGAUER
KUNST
HAUS

LE MONDE SELON FRANCOIS DUBOIS

Musée cantonal des
Beaux-Arts, Lausanne
19.9.2003 – 4.1.2004

ma-me 11h-18h / je 11h-20h / ve-di 11h-17h
les 24 et 31 décembre, 11h-17h
fermé le Lundi du Jeûne, le 25 décembre et le 1er janvier

Palais de Rumine Pl. de la Riponne 6 CH - 1000 Lausanne 17
Tél. +41(0)21 316 34 45, Fax +41(0)21 316 34 46

Neue Räume

Im Rahmen des Jubiläums 200 Jahre Kanton Aargau
18./19. Oktober 2003 Wiedereröffnung des Kunsthauses
in Aarau, erweitert durch Herzog & de Meuron.
www.aarguerkunsthaus.ch

Louis Soutter «Famille de sans Dieu dans l'univers» um 1937/42

Arco 04



international contemporary art fair



February 12-16, 2004

23rd Edition
Parque Ferial Juan Carlos I, Madrid
Halls 7 and 9
www.arcoSpain.org

Official opening:
(by invitation): Wednesday
11th February: 7 p.m.

Professional visit:
(by invitation): Wednesday 11th
February: from 4 p.m. Thursday
12th February: from 11 a.m.

Open to the general public:
Thursday 12th February: 2 p.m. to
9 p.m. Friday 13th, Saturday 14th,
Sunday 15th and Monday 16th:
Noon to 9 p.m.



IFEMA
Feria de
Madrid

IBERIA
Official Carrier



MINISTERIO
DE FOMENTO



MINISTERIO
DE ASUNTOS
EXTERIORES

AECI

ICEX



Ayuntamiento de Madrid



Comunidad de Madrid



Cámara
Madrid



CAJA MADRID

Telefónica



FUNDACIÓN
Telefónica



ESPAÑA

Art | 35 | Basel | 16-21 | June | 04

Die Kunstmesse – The Art Show
Art 35 Basel, MCH Messe Basel AG, CH-4005 Basel
Fax +41/58-206 26 86, info@ArtBasel.com, www.ArtBasel.com

mch
messe schweiz

 UBS

Kunst

2004

Zürich

19–22 November 2004

10th International Contemporary Art Fair

ABB Hall 550

Zürich-Oerlikon

Phone +41 1 381 00 52

mail@kunstzuerich.ch

www.kunstzuerich.ch

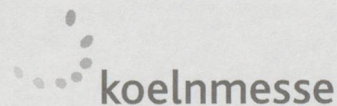
www.artcologne.de

29.10. – 02.11.2003

Die 37. Internationale Messe
für Moderne Kunst



Koelnmesse GmbH
Messeplatz 1, 50679 Köln
Telefon +49 221 821-3248
Telefax +49 221 821-3734
www.koelnmesse.de



Information :

Reed expositions France
11, rue du Colonel-Pierre-Avia
BP 571, 75726 Paris Cedex 15
Tél : +33 (0) 141.90.47.80
Fax : +33 (0) 141.90.47.89
E-mail : fiac@reedexpo.fr

9-13 October 2003

Paris Expo Porte de Versailles

www.fiac-online.com

30
years

Zürich

Fiac

Paris

international contemporary
art fair

 Reed Exhibitions

© am-af.com

Art | Basel | Miami Beach | 4-7 | Dec | 03
Art | 35 | Basel | 16-21 | June | 04

The International Art Show – La Exposición Internacional de Arte
Art Basel Miami Beach, PO Box, CH-4005 Basel
Fax +41/58-206 3132, MiamiBeach@ArtBasel.com, www.ArtBasel.com

ms
messe schweiz

Celebrating 10 Years of Partnership with



e-flux

PROJECTS

In 2001 we initiated an ongoing program of special projects curated and produced for our site. The focus of this program is to present individual works and exhibitions that explicitly engage participation of our audience.

JULY 2003

The Next Documenta Should Be Curated by

The Next Documenta Should Be Curated by an Artist
curated by Jens Hoffmann

What happens if artists take over and occupy territory usually reserved for curators? What happens if artists are asked to propose a concept for a large-scale group exhibition and to take control over a prestigious show such as Documenta? These are some of the questions that The Next Documenta Should Be Curated By An Artist is trying to investigate. With: John Baldessari / Ricardo Basbaum / Laura Belém / Daniel Buren / AA Bronson / Michael Elmgreen & Ingar Dragset / Morgan Fisher / Liam Gillick / Carsten Höller / Cildo Merelles / John Miller / Jonathan Monk / Lawrence Weiner and many others...

MAY 2003

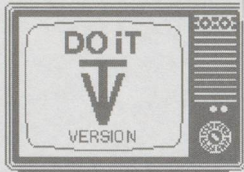
utopia →

Utopia Station Poster Project

Posters by more than 150 artists.
View them online, download and print them out!

A 2003 Venice Biennial project, curated by Molly Nesbit, Hans Ulrich Obrist and Rirkrit Tiravanija, including works by Matthew Barney, Rodney Graham, Thomas Hirschhorn, Ilya and Emilia Kabakov, Steve Mc Queen, Elizabeth Peyton, Ed Ruscha, Lawrence Weiner, Franz West, Yoko Ono, Leon Golub, Nancy Spero, Patti Smith and many many others.

MAY 2002



DO IT
curated by Hans Ulrich Obrist

DO IT is an autonomous show that exists in a form of artist's instructions to be actualized by the audience. Should you decide to participate, segments of the show can materialize in your home, office or any other place you may find appropriate. DO IT is also an online compendium of artists' writings; a 'webzine' containing fascinating essays on the peculiar subject of artworks in the form of instructions and experimental exhibitions, as well as an informal community of people interested in such subjects.

JANUARY 2001

101 ART IDEAS YOU CAN DO YOURSELF
ROB PRUITT

101 Art Ideas You Can Do Yourself
by Rob Pruitt

Think you can't be an artist? Think Again. In 101 Art Ideas You Can Do Yourself, a new York based artist Rob Pruitt supplies the instructions and leaves the art making to the viewer.

Creative Partner
FDI design
communication architects
www.fdi-design.com

www.e-flux.com
For further information please contact
projects@e-flux.com

artfrankfurt 2004

Young Arts Fair

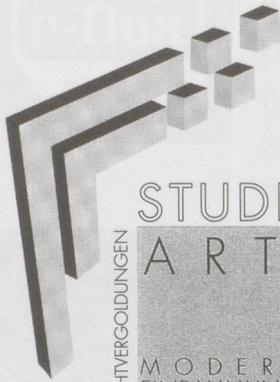
Avantgarde, Modern, Edition

May 7 – 10, 2004

Messe Frankfurt, Hall 1, City Entrance
11 a.m. to 8 p.m., last day to 6 p.m.
Phone + 49 (0) 69 75 75 66 64
www.artfrankfurt.de



AND THE OUTSTANDING PLACE FOR FINE FOOD
SEIDENSPINNER RESTAURANT ANKERSTRASSE 126 8004 ZÜRICH
WWW.SEIDENSPINNER.CH



STUDIO
ARTE

ECHTVERGOLDUNGEN

MODERNE
EINRAHMUNGEN

Studio Arte Flückiger AG
Stauffacherquai 46, 8004 Zürich
Telefon 01-245 86 00
Telefax 01-241 35 85
E-Mail: studio.arte.ag@bluewin.ch



MODERNE EINRAHMUNGEN

WIR HABEN ALLE RAHMEN FÜR DIE AUSSTELLUNGEN DER

PÄRKEIT

- EDITIONEN IM MUSEUM LUDWIG, KÖLN,
IM LOUISIANA MUSEUM, DÄNEMARK, IM HILL SIDE FORUM,
TOKIO, UND IM MUSEUM OF MODERN ART, NEW YORK,
HERGESTELLT.

ZU UNSEREN KUNDEN ZÄHLEN:

KUNSTSAMMLER, MUSEEN, GALERIEN, INDUSTRIE UND PRIVATE.



ART EDITIONS ON SILK

MICHAEL RAEDECKER EDITION FOR PARKETT NR. 65

SOPHIE CALLE EDITION FOR PARKETT NR. 36

KATHARINA FRITSCH

UGO RONDINONE

URS FISCHER

LAWRENCE WEINER FOR WWF

CHRISTA NAEHER

MARKUS OEHLER

MARTIN KIPPENBERGER

WERNER BÜTTNER

HEIMO ZOBERNIG

LUIS CLARAMUNT

MEUSER

ALBERT OEHLER

GÜNTHER FÖRG

HUBERT KIECOL

JÖRG SCHLICK

THE ADDRESSES FOR THE WORLD'S FINEST SILK PRODUCTS:

FABRIC FRONTLINE SEIDENSALON BAHNHOFSTRASSE 25 8001 ZÜRICH
AND ANKERSTRASSE 118 8004 ZÜRICH WWW.FABRICFRONTLINE.CH

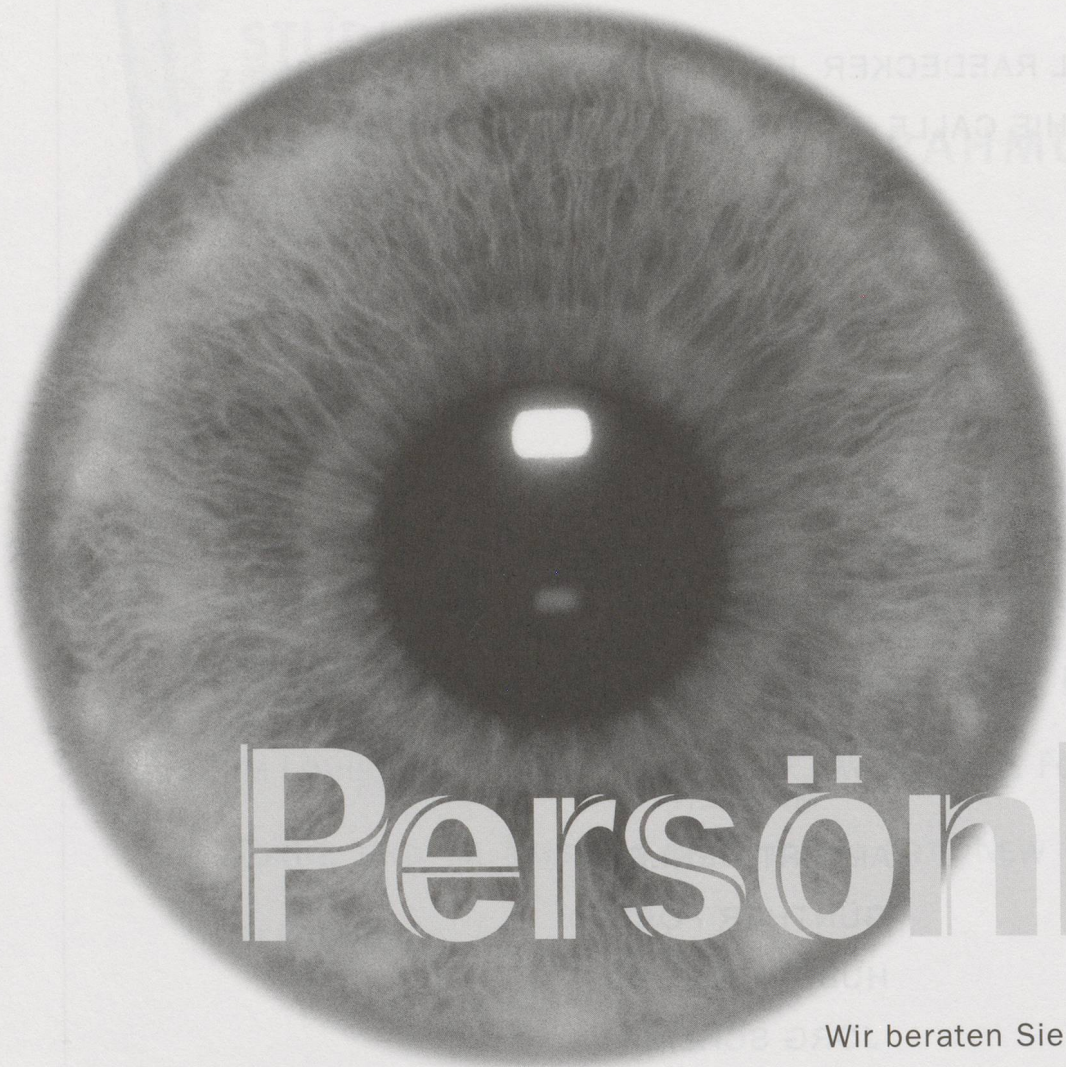
AND THE OUTSTANDING PLACE FOR FINE FOOD:

SEIDENSPINNER RESTAURANT ANKERSTRASSE 120 8004 ZÜRICH
WWW. SEIDENSPINNER.CH



Zürichsee
Druckereien AG

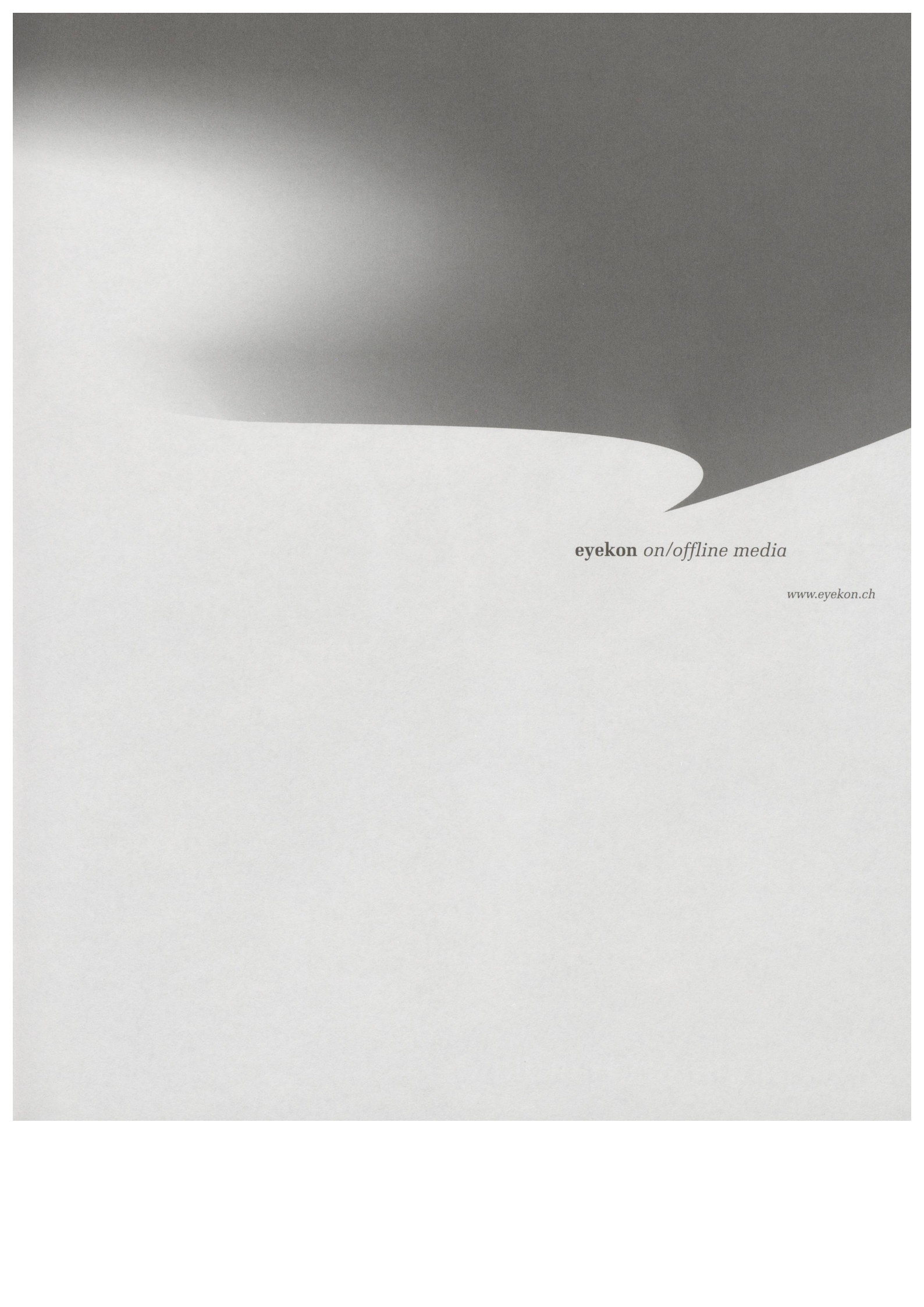
IMMAGINE UNIVERSE (BROUILLÉ)



Persönlich

Wir beraten Sie persönlich und individuell

Zürichsee Druckereien AG • Seestrasse 86 • Postfach • 8712 Stäfa • Telefon 01 928 53 03 • Telefax 01 928 53 10 • Internet <http://www.zsd.ch>



eyekon *on/offline media*

www.eyekon.ch

atelier 4, inc.
177 water street
brooklyn, new york
11201-1111
718 875 5050
fax 718 852 5723
www.atelier4.com



Fine Art Handling

photo © 2003 Mark McCarty

OUTLOOK

International Art Exhibition Athens 2003

25.10.03 - 25.1.04



info:

12 Marni st., 104 33 Athens, Greece
Tel.: 0030 210 825 9620, 0030 210 825 9621
fax: 0030 210 825 9386
e-mail: info@outlook.gr, <http://www.outlook.gr>
www.cultural-olympiad.gr



CULTURAL
OLYMPIAD

for a culture of civilizations

HELLENIC MINISTRY OF CULTURE

Schweizerische Treuhandgesellschaft

Ihr Partner für Vermögensverwaltung und Beratung



www.stg.ch

- Vermögensberatung und Asset Management
- Buchführungen in Zusammenhang mit der Vermögensbetreuung
- Beratung in Steuer-, Rechts- und Erbschaftsfragen
- Finanzplanung und Vorsorgeberatung
- Trusts und Stiftungen
- Fine Art Services
- Executive search
- Immobiliendienstleistungen

**Die Gesellschaft für die individuelle Betreuung
aller Ihrer Vermögensangelegenheiten**



Schweizerische Treuhandgesellschaft
Société Fiduciaire Suisse

Basel +41 (0)61 277 55 00, Bern +41 (0)31 326 73 00, Genève +41 (0)22 710 74 00, Lausanne +41 (0)21 728 37 50,
Lugano +41 (0)91 913 77 00, Zürich +41 (0)1 219 79 00

dal 17.9 al 22.11.2003

GALLERIA GOTTARDO

THE SPIRIT OF TUALLI - LAND - SCAPÉ

Gleizes Kandinsky Marc Mondrian Münter Nolde

dalle collezioni del Solomon R. Guggenheim Museum di New York

Galleria Gottardo
una fondazione per la cultura
della Banca del Gottardo

Martedì
14.00 - 17.00
Mercoledì
- sabato
11.00 - 17.00
Domenica
11.00 - 16.00
Entrata libera

Galleria Gottardo
Viale Francini 12
CH 6900 Lugano

Telefono 091 808 1988
Fax 091 808 2447
E-mail galleria@gottardo.com

SI-FALL + WINTER PROGRAM + EVENTS:

FRANCIS BAUDEVIN, NIC HESS AND MATHIEU MERCIER, SEPT 9 - OCT 25 2003

NEW SI-PROJECTS BY ALEKSANDRA MIR, JONATHAN MONK, MOMOYO TORIMITSU AND OTHERS,

AS WELL AS SI-LECTURE SERIES WITH CURATORS AND ARTISTS, HALLOWEEN PARTY, AND MORE.

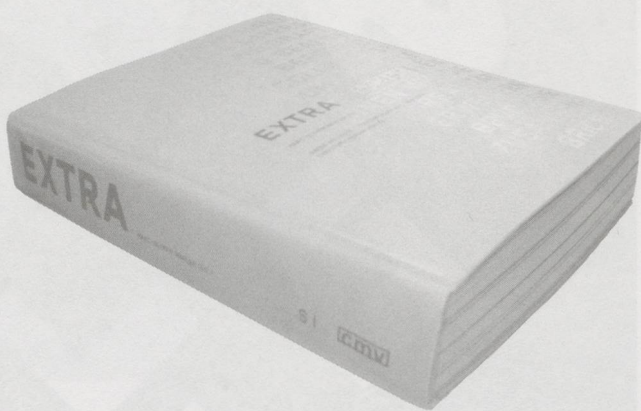
SAVE THE DATE: OCT 30TH SI-BENEFIT AUCTION AND DINNER

HOW MANY EXTRA
LAYERS CAN WE
GRAFT ONTO
REALITY BEFORE
IT COLLAPSES?

EXTRA / THE BOOK

WITH EXTRA, 28 ARTISTS HAVE COME TOGETHER, JOINED BY CRITICS, CURATORS AND PHYSICISTS, TO EXPOSE THE DEPTH AND COMPLEXITY OF REALITY IN A GRAND COLLABORATION.

EACH ARTIST HAS CONTRIBUTED AN ORIGINAL VISUAL ESSAY IN FULL COLOR. THEIR IMAGES ARE COMPLIMENTED BY SEVERAL FASCINATING TEXTS. DAVID DEUTSCH AND SETH LLOYD, QUANTUM PHYSICISTS, DELIVER A PASSIONATE ROUND OF "BRAIN TENNIS" IN THEIR CORRESPONDENCE DISCUSSING THE CONCEPT OF MULTIPLE UNIVERSES. MARC-OLIVIER WAHLER'S TEXT ABOUT GLIDING THROUGH THE FOLDS OF REALITY IS AN INTRICATE COMPANION TO HIS EXHIBITION. THE TEXTS OF ART CRITIC BOB NICKAS AND SEVERAL ARTISTS (JOHN GIORNO, JUTTA KOETHER, OLIVIER MOSSET AND STEVEN PARRINO) SERVE TO ROUND OUT AND COMPLETE THIS MULTILAYERED COLLABORATION.



EXTRA ORIGINAL VISUAL ESSAYS BY:
VIRGINIE BARRÉ, OLIVIER BLANCKART, OLAF BREUNING,
STÉPHANE DAFFLON, WIM DELVOYE, DANIEL FIRMAN,
URS FISCHER, PETER FISCHLI / DAVID WEISS, SYLVIE FLEURY,
GELATIN, JOHN GIORNO, JANINE GORDON, FABRICE GYGI,
LORI HERSBERGER, CHRISTIAN JANKOWSKI, OLIVIER MOSSET,
GIANNI MOTTI, ERIK PARKER, STEVEN PARRINO,
JUTTA KOETHER, BRUNO PEINADO, UGO RONDINONE,
JEAN-CLAUDE RUGGIRELLO, STÉPHANE SAUTOUR, JIM SHAW,
ROMAN SIGNER, OLAV WESTPHALEN AND ERWIN WURM.

EXTRA, 440 PAGES, FULL COLOR
EDITED BY MARC-OLIVIER WAHLER
PUBLISHED BY THE SWISS INSTITUTE - CONTEMPORARY ART
AND CHRISTOPH MERIAN VERLAG
DISTRIBUTED IN NORTH-AMERICA BY D.A.P.
TO ORDER NOW VISIT WWW.SWISSINSTITUTE.NET

S I

SWISS INSTITUTE - CONTEMPORARY ART,
495 BROADWAY 3RD FLOOR / NEW YORK NY 10012
TUESDAY - SATURDAY 11 A.M. - 6 P.M. / p 212 925 2035 / f 212 925 2040
www.swissinstitute.net / info@swissinstitute.net

27. September bis 16. November 2003

ANISH KAPOOR

29. November 2003 bis 11. Januar 2004

Remind..

KUB

KunsthauB Bregenz
Karl Tizian Platz
A-6900 Bregenz

Telefon +43-(0)55 74-485 94-0
www.kunsthauB-bregenz.at

Dienstag – Sonntag 10–18 Uhr
Donnerstag 10–21 Uhr



me & more with Magdalena Abakanowicz, Laylah Ali, Ross Bleckner, Antony Gormley, Yishai Jusidman, Barbara Kruger, Elke Krystufek, Urs Lüthi, Tatjana Marusic, Miao Xiaochun, Ernesto Neto, Chloe Piene, Kiki Smith, Zhang Huan

August 9 - November 23

Kunstmuseum Luzern Museum of Art Lucerne
Europaplatz 1 (KKL Level K) CH-6002 Luzern Tel. +41 (0)41 226 78 00
Infotel. +41 (0)41 226 78 78 www.kunstmuseumluzern.ch



**KUNST- UND AUSSTELLUNGSHALLE
DER BUNDESREPUBLIK DEUTSCHLAND**



AZTEKEN

26. SEPTEMBER 2003 BIS 11. JANUAR 2004

DIESE AUSSTELLUNG WURDE ORGANISIERT VON DER ROYAL ACADEMY OF ARTS, LONDON.

MEXICO CONACULTA · INAH

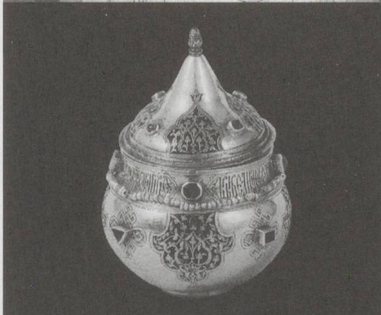


SCHÄTZE DER HIMMELSSÖHNE

**DIE KAISERLICHE SAMMLUNG AUS DEM NATIONALEN
PALASTMUSEUM, TAIPEH · DIE GROSSEN SAMMLUNGEN**

21. NOVEMBER 2003 BIS 15. FEBRUAR 2004

中華航空
CHINA AIRLINES



DER KREML

IM SPIEGEL SEINER 800-JÄHRIGEN GESCHICHTE

13. FEBRUAR BIS 9. MAI 2004




GEORG BASELITZ

**BILDER, DIE DEN KOPF VERDREHEN
EINE RETROSPEKTIVE**

BILDER UND SKULPTUREN VON 1959 BIS 2004

2. APRIL BIS 11. JULI 2004

EINTRITTSKARTEN ZU DEN AUSSTELLUNGEN „SCHÄTZE DER HIMMELSSÖHNE“ UND „AZTEKEN“ IM VORVERKAUF (BESUCH OHNE WARTZEIT) UNTER WWW.ARTCITIES.DE
BUCHUNGSHOTLINE: 07531-9073-0, BUCHUNGSFAX: 07531-9073-0 UND E-MAIL: TICKETS@ARTCITIES.DE UNTER BUCHUNGSCODE: ARTBNJ SP 02 

**MUSEUMSMEILE BONN · FRIEDRICH-EBERT-ALLEE 4 · D-53113 BONN · WWW.BUNDESKUNSTHALLE.DE
TEL. +49(0) 228/ 9171200 · ÖFFNUNGSZEITEN: DI UND MI 10 – 21 UHR · DO BIS SO 10 – 19 UHR · MONTAG GESCHLOSSEN**



IMAGES OF SOCIETY

Pierre Bismuth, Davide Cantoni, Hans-Peter Feldmann, Mona Hatoum, Thomas Hirschhorn, William Kentridge,
Guillermo Kuitca, Ulrike Kuschel, Graham Little, Juan Muñoz, Olaf Nicolai, João Onofre, Anri Sala,
Rosemarie Trockel, Carey Young

7.9.-16.11.2003

KUNSTMUSEUM THUN

Kunstmuseum Thun

Thunerhof
Hofstettenstrasse 14
CH-3602 Thun

Öffnungszeiten:
Di-So 10-17 Uhr
Mi 10-21 Uhr
Mo geschlossen



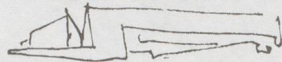
EIJA-LIISA AHTILA

MUSEION

21.9.2003 - 4.1.2004

Museion - Museum für moderne und zeitgenössische Kunst Bozen Sernesistr. 1 Tel.: +39 0471 980001 Fax: +39 0471 312460
<http://www.museion.it> E-mail: info@museion.it Öffnungszeiten: Di-So 10.00-18.00 Do 10.00-20.00 Montag und feiertags geschlossen

dez anos



diez años • ten years



Hubbard & Birchler: *Eight*, 2001

Exhibitions

29 September - December

Karin Sander

Teresa Hubbard & Alexander Birchler

Roland Fischer

João Onofre

Vicente Blanco

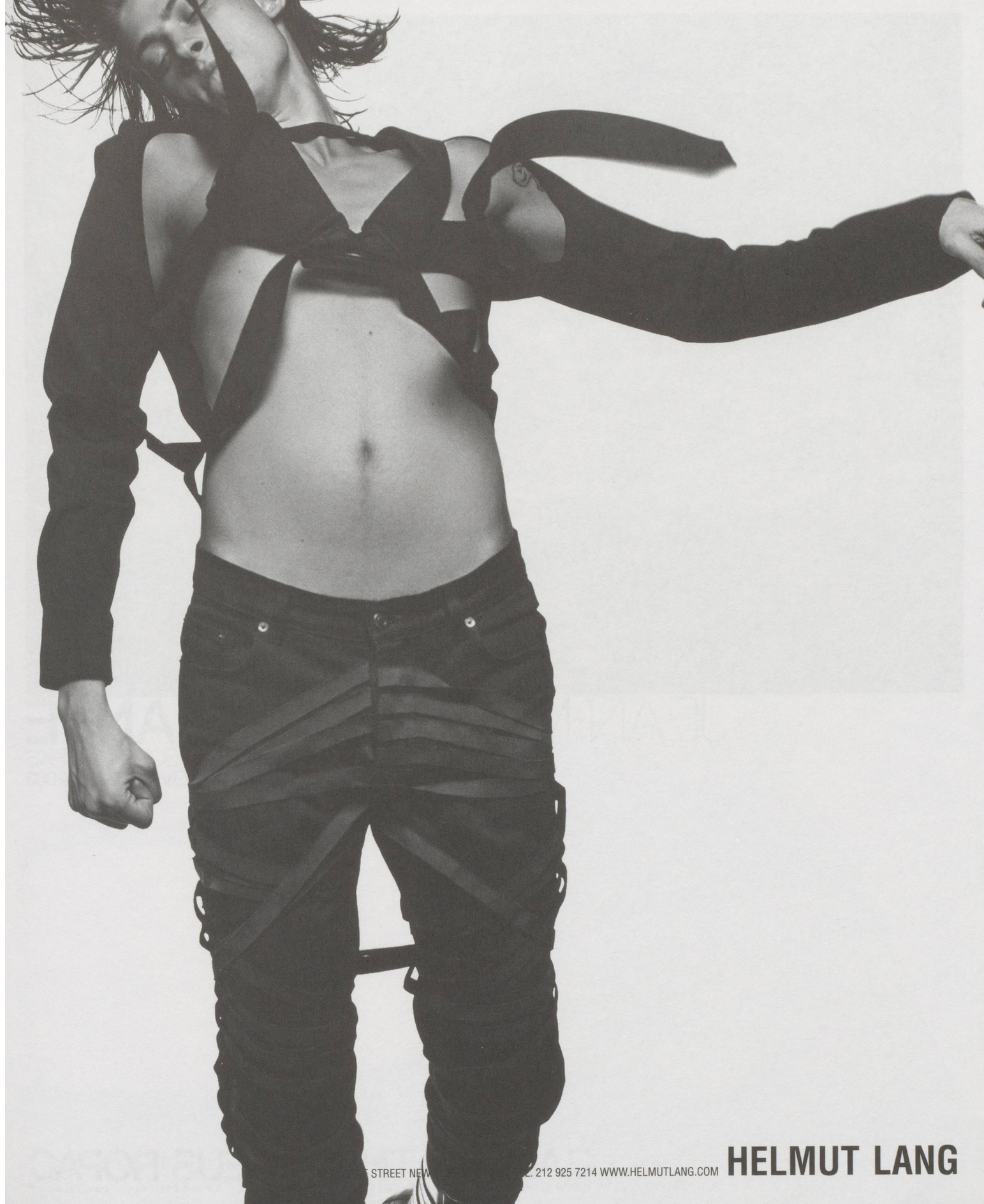
Marina Abramović. *Student Body*

29 September. Auditorium



XUNTA DE GALICIA
CONSELLERÍA DE CULTURA,
COMUNICACIÓN SOCIAL E TURISMO

CGAC CENTRO GALEGO
DE ARTE
CONTEMPORÁNEA



STREET NEW

2. 212 925 7214 WWW.HELMUTLANG.COM

HELMUT LANG



JEAN-MARC **BUSTAMANTE**

RECENT WORKS

SEPTEMBER 27 - NOVEMBER 8, 2003

GALERIE THADDAEUS ROPAC

MIRABELLPLATZ 2, 5020 SALZBURG TEL: 43 662 881 393 FAX: 43 662 881 3939 www.ropac.net

THOMAS AMMANN FINE ART AG ZÜRICH

BACON
BALTHUS
BECKMANN
BEUYS
BRAQUE
CALDER
CHAGALL
GIACOMETTI
KANDINSKY
KIRCHNER
KLEE
DE KOONING
LEGER
LICHTENSTEIN
MARDEN
MATISSE
MIRO
PICASSO
RYMAN
TAAFFE
TWOMBLY
WARHOL
WESSELMANN

RESTELBERGSTRASSE 97 · CH-8044 ZÜRICH · TEL +41 1 360 51 60 · FAX +41 1 360 51 61
WWW.AMMANNFINEART.COM · DA@AMMANNFINEART.COM

silvia gertsch
xerxes ach

from dusk till dawn – new works

august 21 – october 4, 2003

sean scully

photographs

october 10 – november 22, 2003

galerie jamileh weber

waldmannstrasse 6
ch-8001 zurich
telefon +41 1 252 10 66
telefax +41 1 252 11 32
www.jamilehweber.com
info@jamilehweber.com
tu-fr 11–18h, sa 10–16h

Deutsche Guggenheim



of Tom Sachs

Nuttoy's

24.7. → 5.10.2003

SPERONE WESTWATER
&
DEITCH PROJECTS

F R A N C I S

A L L Y S

COLLABORATION

ARTISTS 69

.....
I S A
GE NZ KE N
.....

.....
A N I S H
K A P O O R
.....

Studies in the multiple perspectives of several simultaneous vantage points mark the pages of this volume of Parkett with Franz Ackermann, Eija-Liisa Ahtila, and Dan Graham. The air-craft on the cover presages artistic journeys that thoroughly ruffle our ingrained notions of time and space.

Ein Erforschen von Gleichzeitigkeiten, von multiperspektivischen Betrachtungspunkten steht im Zentrum dieser Ausgabe von Parkett mit Franz Ackermann, Eija-Liisa Ahtila und Dan Graham. Das Flugzeug auf dem Titelblatt kündigt von diesen Reisen, auf welchen die Zeit- und Raumbegriffe tüchtig durcheinander geraten.

FRANZ ACKERMANN: DOUGLAS FOGLE / JOSHUA DECTER / RAIMAR STANGE

EIJA-LIISA AHTILA: CHRISSIE ILES / TARU ELFVING / GERTRUD KOCH

DAN GRAHAM: NICOLÁS GUAGNINI & KARIN SCHNEIDER / MARIE-PAULE MACDONALD / MASSIMILIANO DI BARTOLOMEO / CARMEN ROSENBERG MILLER

DANIEL KURJAKOVIC ON BOJAN SARCEVIC / HANS ULRICH OBRIST ON BERNARD FRIZE / GREGOR JANSEN ON DIRK SKREBER / LES INFOS DU PARADIS: JAY MURPHY ON / "YANOMAMI, SPIRIT OF THE FOREST" /

CUMULUS FROM AMERICA: CAY SOPHIE RABINOWITZ ON "MULTIPLE CITY" / CUMULUS FROM EUROPE: JENS HOFFMANN ON TINO SEHGAL / BALKON: HANS RUDOLF REUST ON THOMAS STRUTH

ISBN 390758218-7



5 3 2 0 0



9 783907 582183