

Zeitschrift: Parkett : the Parkett series with contemporary artists = Die Parkett-Reihe mit Gegenwartskünstlern
Herausgeber: Parkett
Band: - (2002)
Heft: 66: Angela Bulloch, Daniel Buren, Pierre Huyghe

Werbung

Nutzungsbedingungen

Die ETH-Bibliothek ist die Anbieterin der digitalisierten Zeitschriften auf E-Periodica. Sie besitzt keine Urheberrechte an den Zeitschriften und ist nicht verantwortlich für deren Inhalte. Die Rechte liegen in der Regel bei den Herausgebern beziehungsweise den externen Rechteinhabern. Das Veröffentlichen von Bildern in Print- und Online-Publikationen sowie auf Social Media-Kanälen oder Webseiten ist nur mit vorheriger Genehmigung der Rechteinhaber erlaubt. [Mehr erfahren](#)

Conditions d'utilisation

L'ETH Library est le fournisseur des revues numérisées. Elle ne détient aucun droit d'auteur sur les revues et n'est pas responsable de leur contenu. En règle générale, les droits sont détenus par les éditeurs ou les détenteurs de droits externes. La reproduction d'images dans des publications imprimées ou en ligne ainsi que sur des canaux de médias sociaux ou des sites web n'est autorisée qu'avec l'accord préalable des détenteurs des droits. [En savoir plus](#)

Terms of use

The ETH Library is the provider of the digitised journals. It does not own any copyrights to the journals and is not responsible for their content. The rights usually lie with the publishers or the external rights holders. Publishing images in print and online publications, as well as on social media channels or websites, is only permitted with the prior consent of the rights holders. [Find out more](#)

Download PDF: 03.04.2026

ETH-Bibliothek Zürich, E-Periodica, <https://www.e-periodica.ch>

E X H I B I T I O N S

ZÜRICH

ARS FUTURA GALERIE AG	Bleicherweg 45 8002 Zürich Tel. 01 201 88 10 www.arsfutura.com info@arsfutura.com	OLAF BREUNING	6.12.–1.2.2003
		YVES NETZHAMMER	14.2.–26.4.2003
		ERWIN WURM	9.5.–12.7.2003
FIRST ART TRADE	Stauffacherstrasse 153 8004 Zürich Tel. 0848 200 777 office@first-art-trade.ch	G. MICHAEL SCHLEENHAIN "Helter Skelter"	17.12.–31.1.2003
		DAGMAR BECHHAUS "Strictly Ballroom"	5.2.–15.3.2003
ELISABETH KAUFMANN	Müllerstrasse 57 8004 Zürich Tel./Fax 043 322 01 15 elkauf@yahoo.com	HANNE DARBOVEN "Hanneles Tierleben" 15.1.2003: Vortrag von Sybille Omlin (Diskussion + Apéro)	11.1.–28.2.2003
		ANSELM STALDER	8.3.–17.4.2003
GALERIE LEHMANN LESKIW + SCHEDLER	Josefstrasse 53 8005 Zürich Tel. 01 440 61 20 www.schedler.ch zurich@schedler.ch	room I	
		RODOLPHE DEVILLE, Neue Malereien	
		room II	
		PETER WINTERHALTER ASPELL, paintings	10.1.–15.2.2003
		CHERRY HOOD, water colors	21.2.–29.3.2003
GALERIE LELONG	Utoquai 31 8008 Zürich Tel. 01 251 11 20 galerie.lelong@dplanet.ch	CHRISTOPH HÄNSLI "Damals wusste ich noch..."	4.4.–10.5.2003
		LEE WAGSTAFF, photographs	16.5.–21.6.2003
		PIERRE ALECHINSKY	März 2003
MAI 36 GALERIE	Rämistrasse 37 8001 Zürich Tel. 01 261 68 80 www.artgalleries.ch/mai36 mai36@artgalleries.ch	RÉMY ZAUGG	11.1.–22.2.2003
		TROY BRAUNTUCH	27.2.–5.4.2003
MARK MÜLLER	Gessnerallee 36 8001 Zürich Tel. 01 211 81 55 www.markmueller.ch mark.mueller@dplanet.ch	URS FREI "new works" & MARCIA HAFIF "works on paper"	11.1.–22.2.2003
		ARCO 2003, Madrid, artists of the gallery	13.2.–18.2.2003
		DUANE ZALOUDEK "nomad songs"	1.3.–5.4.2003
GALERIE SEMINA RERUM IRÈNE PREISWERK	Cäcilienstrasse 3 8032 Zürich Tel. 01 251 26 39 www.seminarerum.ch ipreiswerk@bluewin.ch	ERIK STEFFENSEN	bis 25.1.2003
		The wilder shores of love	1.2.–15.3.2003
		AGNES FUCHS	22.3.–26.4.2003

E X H I B I T I O N S

BOB VAN ORSOUW	Limmatstrasse 270	ALBRECHT SCHNIDER	25.1.–15.3.2003
	8005 Zürich	ARCO Madrid	12.2.–18.2.2003
	Tel. 01 273 11 00 mail@bobvanorsouw.ch	Armory New York	6.3.–10.3.2003

ANNEMARIE VERNA	Neptunstrasse 45	RETROSPEKTIV III	
	8032 Zürich	SYLVIA PLIMACK, MANGOLD & JAMES BISHOP	
	Tel. 01 262 38 20 www.annemarie-verna.ch office@annemarie-verna.ch	Works 1969–2002	29.11.–25.1.2003
		ARCO Madrid	12.2.–18.2.2003

GALERIE JAMILEH WEBER	Waldmannstrasse 6	DARRYL POTTORF, new paintings	
	8001 Zürich	ROBERT RAUSCHENBERG	
	Tel. 01 252 10 66 www.jamilehweber.com info@jamilehweber.com	Japanese Recreational Clayworks	23.11.–8.2.2003

BRIGITTE WEISS	Müllerstrasse 67	PREVIEW IV	10.1.–28.2.2003
	8004 Zürich	MARCO GANZ	7.3.–26.4.2003
	Tel. 01 241 83 35 www.likeyou.com/brigitteweiss brigitteweiss@bluewin.ch	CHRISTINA ZURFLUH	Mai / Juni 2003

BASEL

NICOLAS KRUPP	Erlenstrasse 15 4058 Basel Tel. 061 683 32 65 www.nicolaskrupp.com nic@nicolaskrupp.com	STUDER / vd BERG	
		ATTA KWAMI	12.12.–1.2.2003
		PETER FRIEDL	6.2.–29.3.2003
		ARCO Madrid	13.2.–18.2.2003
		WERNER REITERER	3.4.–31.5.2003

GALERIE FRIEDRICH	Grenzacherstrasse 4 4058 Basel Tel. 061 683 50 90 galerie-friedrich@bluewin.ch	ANSELM STALDER	17.1.–28.2.2003
		ARCO Madrid	13.2.–18.2.2003
		KAY ROSEN, MATTHEW McCASLIN	7.3.–16.4.2003

ST. GALLEN

WILMA LOCK	Schmiedgasse 15 9000 St. Gallen Tel. 071 222 62 52 wilmalock@freesurf.ch	IMI KNOEBEL – MARK FRANCIS –	
		STEPHEN WESTFALL	Februar
		DANIEL ZIMMERMANN "Knüller"	ab 25.3.2003

SUSANNA KULLI	Davidstrasse 40 9000 St. Gallen Tel. 071 223 59 58 www.susannakulli.ch info@susannakulli.ch	OLIVIER MOSSET	28.1.–5.3.2003
		ARCO Madrid	13.2.–18.2.2003
		ROLF GRAF	April / Mai 2003

CHRISTIAN MARCLAY

12 DECEMBER - 18 JANUARY 521 W 21

ROBERT GROSVENOR

17 JANUARY - 15 FEBRUARY 534 W 21

JOHN TREMBLAY

12 FEBRUARY - 15 MARCH 521 W 21

DAN WALSH

20 FEBRUARY - 22 MARCH 534 W 21

ZOE LEONARD

20 MARCH - 19 APRIL 521 W 21

PAULA COOPER 534 W 21 NY 10011 TEL 212.255.1105 FAX 212.255.5156

TACITA DEAN

JANUARY 10 – FEBRUARY 8, 2003
NEW YORK

CONGRATULATIONS
PIERRE AND DANIEL

MARIAN GOODMAN GALLERY

24 WEST 57TH STREET NEW YORK, NY 10019
TEL: 212-977-7160 FAX: 212-581-5187

GALERIE MARIAN GOODMAN

79, RUE DU TEMPLE PARIS, FRANCE 75003
TEL: 33-1-4804-7052 FAX: 33-1-4027-8137

WWW.MARIANGOODMAN.COM

Sadie Coles HQ
exhibitions by

Carl Andre
John Bock
Don Brown
Jeff Burton
Liz Craft
John Currin
Keith Edmier
Angus Fairhurst
Urs Fischer
Felix Gonzalez-Torres
Jonathan Horowitz
David Korty
Jim Lambie
Sarah Lucas
Victoria Morton
Hellen van Meene
JP Munro
Laura Owens
Simon Periton
Raymond Pettibon
Elizabeth Peyton
Richard Prince
Ugo Rondinone
Daniel Sinsel
Gregor Schneider
Andreas Slominski
Nicola Tyson
TJ Wilcox
Andrea Zittel

forthcoming
exhibitions

JP Munro
27 Nov – 11 Jan 2003

Urs Fischer
29 Jan – 8 Mar 2003

Andy Warhol
13 Mar – 19 Apr 2003

Richard Prince
23 Apr – 31 May 2003

Sadie Coles HQ
35 Heddon Street
London W1B 4BP
T + 44 [0] 20 7434 2227
F + 44 [0] 20 7434 2228
www.sadiecoles.com

JP Munro

Sadie Coles HQ



Urs Fischer

Sadie Coles HQ



Andy Warhol

Sadie Coles HQ



Richard Prince

Sadie Coles HQ

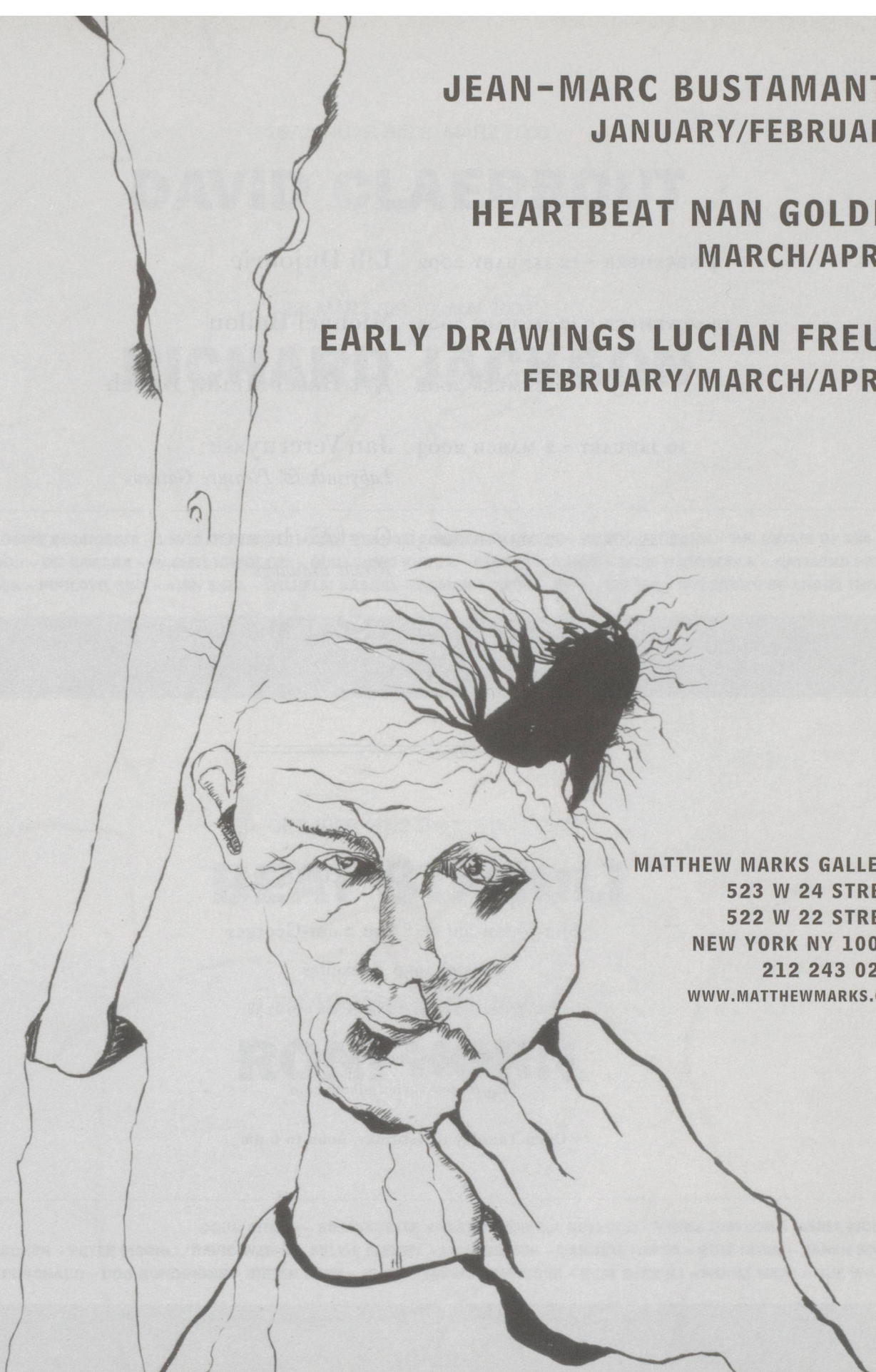


LUCIAN FREUD
DRAWING (detail)
1939-40
INK ON PAPER
8 1/2 X 5 3/4 INCHES
22 X 15 CM

JEAN-MARC BUSTAMANTE
JANUARY/FEBRUARY

HEARTBEAT NAN GOLDIN
MARCH/APRIL

EARLY DRAWINGS LUCIAN FREUD
FEBRUARY/MARCH/APRIL



MATTHEW MARKS GALLERY
523 W 24 STREET
522 W 22 STREET
NEW YORK NY 10011
212 243 0200
WWW.MATTHEWMARKS.COM

- 14 NOVEMBER - 12 JANUARY 2002 Lili Dujourie
- 14 NOVEMBER - 12 JANUARY 2002 Michael Ballou
- 5 - 8 DECEMBER 2002 Art Basel Miami Beach
- 16 JANUARY - 2 MARCH 2003 Jan Vercruysse
Labyrinth & Pleasure Gardens
- 16 JANUARY - 2 MARCH 2003 Gert Verhoeven
Recent drawings
- 14 - 23 MARCH 2003 TEFAF Maastricht

Xavier Hufkens

Sint-Jorisstraat 6-8 rue Saint-Georges

Brussel 1050 Bruxelles

TEL. 32 (0)2 639 67 30 - FAX 32 (0)2 639 67 38

info@xavierhufkens.com

<http://www.xavierhufkens.com>

Open Tuesday to Saturday, noon to 6 pm

25. JANUAR BIS 8. MÄRZ 2003

DAVID CLAERBOUT

22. MÄRZ BIS 10. MAI 2003

RICHARD JACKSON

LOUISE BOURGEOIS – DAVID CLAERBOUT – DAN GRAHAM – RODNEY GRAHAM – MARY HEILMANN – THE ESTATE OF EVA HESSE
RICHARD JACKSON – ON KAWARA – RACHEL KHEDOORI – GUILLERMO KUITCA – PAUL MCCARTHY – JOHN MCCRACKEN – RAYMOND PETTIBON
JASON RHOADES – PIPILOTTI RIST – ANRI SALA – WILHELM SASNAL – ROMAN SIGNER – DIANA THATER – THE ESTATE OF ANDRÉ THOMKINS

GALERIE HAUSER & WIRTH

Limmatstrasse 270, 8005 Zürich / Tel: +41 1 446 80 50, Fax: +41 1 446 80 55 / www.ghw.ch / Öffnungszeiten: Di-Fr 12-18, Sa 11-16 Uhr

26. OKTOBER 2002 BIS 8. MÄRZ 2003

BEAT STREULI

22. MÄRZ BIS 10. MAI 2003

RONI HORN

DOUG AITKEN – EMMANUELLE ANTILLE – ANGELA BULLOCH – VERNE DAWSON – MARIA EICHHORN
URS FISCHER – PETER FISCHLI/DAVID WEISS – SYLVIE FLEURY – LIAM GILICK – CANDIDA HÖFER – RONI HORN – KAREN KILIMNIK
GERWALD ROCKENSCHAUB – UGO RONDINONE – DIETER ROTH – JEAN-FRÉDÉRIC SCHNYDER – BEAT STREULI – FRANZ WEST – SUE WILLIAMS

GALERIE HAUSER & WIRTH & PRESENHUBER

Limmatstrasse 270, 8005 Zürich / Tel: +41 1 446 80 60, Fax: +41 1 446 80 65 / www.ghwp.ch / Öffnungszeiten: Di-Fr 12-18, Sa 11-16 Uhr

GALERIA ■ HELGA DE ALVEAR

DR. FOURQUET 12, 28012 MADRID. TEL: (34) 91 468 05 06 FAX: (34) 91 467 51 34
e-mail: galeria@helgadealvear.net www.helgadealvear.net

January 10 - February 28

I M I K N O E B E L

A L I C I A F R A M I S

February 13 - 18

A R C O 2 0 0 3

March 7 - April 26

M O N T S E R R A T S O T O

A L B E R T O P E R A L

Förg

Alechinsky

Miró

Kirkeby

Appel

Nitsch

Klapheck

Bourgeois

Penck

Klossowski

Chillida

Rainer

Kounellis

Copley

Tàpies

Mendieta

De Maria

von Rydingsvard

Lüpertz

PIERRE ALECHINSKY

MARCH 2003

GALERIE LELONG ZÜRICH

Utoquai 31 • CH-8008 Zürich • Telefon +41-1-251 11 20

Fax +41-1-262 52 85 • E-Mail: galerie.lelong@dplanet.ch

Carlos Amorales

Ruedi Bechtler

Nic Hess

Daniel Knorr

Wangechi Mutu

Yoko Ono

Bülent Sangar

Javier Téllez

Minnette Vári

www.zieglergalerie.com
info@zieglergalerie.com

SERGE ZIEGLER GALERIE

G E O R G Z K A R G L

RE-PRODUKTION

curated by
Thomas Locher
january – march 2003

S C H L E I F M Ü H L G A S S E 5 W I E N 1 0 4 0
T E L 5 8 5 4 1 9 9 F A X 5 8 5 4 1 9 9 9

20, 21

Takashi Murakami: *Magic Ball (positive)*, 1999 (Detail)
acrylic on canvas mounted on board, 240 x 630 x 5 cm (7 panels)
© 1999, Takashi Murakami. All rights reserved.
Photo: Courtesy Tomio Koyama Gallery, Tokyo

Galerie Edition Kunsthandel GmbH
Meisenburgstraße 169–173
45133 Essen
Tel. +49 201 87100-0
Fax +49 201 87100-10
INFO@2021ART.COM
WWW.2021ART.COM

Di–Fr 10–18 · Sa 11–16
und nach Vereinbarung



**Zeitgenössische
A WORLD
Kunst
OUT OF
aus Japan
JOINT**

30|11|2002–8|2|2003

G A L E R I E M E E R T R I H O U X

CARLA ACCARDI
ROBERT ADAMS
MARIO AIRÒ
JOHN BALDESSARI
ROBERT BARRY
INAKI BONILLAS
ENRICO CASTELLANI
HANNE DARBOVEN
MARIA ANNA DEWES
SYLVIE EYBERG
ISA GENZKEN
JEF GEYS
MIMMO JODICE
PETER JOSEPH
DONALD JUDD
LOUISE LAWLER
SOL LEWITT
ROBERT MANGOLD
EVA MARISALDI
LILIANA MORO
FRED SANDBACK
THOMAS STRUTH
GRAZIA TODERI
RICHARD TUTTLE
MICHAEL VENEZIA
IAN WALLACE
JEFF WALL

RUE DU CANAL 13
1000 BRUXELLES
VAARTSTRAAT 13
1000 BRUSSEL
TEL 32(0)2 219 14 22
FAX 32(0)2 219 37 21
GRETA.MEERT@SKYNET.BE

John M Armleder

Christoph Büchel

Thomas Hirschhorn

Jean-Luc Manz

Sylvie Fleury

Gaylen Gerber

Thom Merrick

Rolf Graf

Olivier Mosset

Peter Z. Herzog

Gerwald Rockenschaub

Adrian Schiess

Muntean/Rosenblum

Galerie Susanna Kulli

Davidstrasse 40 • CH-9000 St. Gallen • Tel. 071 223 59 58 • Fax 071 223 59 35

www.susannakulli.ch • Offen: Di bis Fr 14–18 • Sa 11–17

GALERIE



BOB



GYSIN



WWW.BG-GALERIE.CH

AUSSTELLUNGSSTRASSE 24, 8005 ZÜRICH

T +41-1-278 40 60—F +41-1-278 40 50—INFO@BG-GALERIE.CH

Niklaus Rüegg
Februar–März

Andrea Wolfensberger
April – Mai

DI–FR 12–18—SA 11–16

30/11/2002–8/2/2003

gallery bob van orsouw limmatstrasse 270 8005 zurich
phone +41-1-273 11 00 fax +41-1-273 11 02 mail@bobvanorsouw.ch

january 25
until
march 15, 2003 **albrecht schneider**

february 12
until
february 18, 2003 **arco madrid**

march 6
until
march 10, 2003 **armory new york**

MAI 36 GALERIE

RÉMY ZAUGG

17. Januar – 22. Februar 2003

TROY BRAUNTUCH

28. Februar – 5. April 2003

ARCO'03 Madrid

13. - 18. Februar 2003

Rämistrasse 37, CH-8001 Zürich, www.artgalleries.ch/mai36
Tel. +41 1 261 68 80, Fax +41 1 261 68 81, mai36@artgalleries.ch

CAROLINA NITSCH CONTEMPORARY ART

WORKS ON PAPER, PHOTOGRAPHY, NEW MEDIA, PRINTS AND MULTIPLES

DAVID BUNN, LOUISE BOURGEOIS, E.V.DAY, INKA ESSENHIGH, ROBERT
GOBER, DONALD JUDD, JEFF KOONS, MATT MULLICAN, BRUCE NAUMAN, OLAF
NICOLAI, JORGE PARDO, RAYMOND PETTIBON, ELIZABETH PEYTON, MARKUS
RAETZ, GERHARD RICHTER, THOMAS RUFF, ED RUSCHA, LAURIE SIMMONS,
RICHARD TUTTLE, REMY ZAUGG, ANDY WARHOL, FRANZ WEST AND OTHERS

101 WOOSTER STREET NEW YORK NY 10012 • BY APPOINTMENT

TEL 212 966 4095 • FAX 212 226 0862

WWW.ARTNET.COM/CNITSCH.HTML • ACNITSCH@AOL.COM



masami akita & russell haswell

SATANSTORNADE


AVAILABLE ON CD (WARPCD666) + VINYL (WARPLP666) <http://www.warprecords.com>

- The Mondriaan Foundation is a cultural fund that provides funding for projects related to the visual arts, design and museums.
- The Mondriaan Foundation supports projects of exceptional quality that promote the international standing of art, design and museums from the Netherlands.
- The Mondriaan Foundation is also responsible for the Dutch contribution to the Biennale di Venezia and the Bienal de São Paulo.



www.mondriaanfoundation.nl

For further information please contact the Mondriaan Foundation in Amsterdam. You can visit our website or ask for our brochure. T +31 20 6762032, F +31 20 6762036, E info@mondriaanfoundation.nl

lehmans leskiw  schedler
fine art

Lehmans Leskiw + Schedler
Fine Art Zürich Toronto
Schedler, Aktiengesellschaft

Josefstrasse 53
CH 8005 Zürich
T +41 1 440 61 20
F +41 1 440 61 21
galerie@schedler.ch

(opening: 12 February 2003)
626 Richmond Street West
Toronto, Ontario M5V1Y9
T +1 416 922 1914
F +1 416 922 1915
toronto@l-l-s.com

www.schedler.ch / www.l-l-s.com
Member of
Association of Swiss Galleries AGS

10 January until 15 February 2003

room I
Rodolphe Deville, Neue Malereien
room II
Peter Winterhalter Aspell, paintings

21 February until 29 March

room I & II
Cherry Hood, water colors

4 April until 10 May

room I & II
Christoph Hänslı, "Damals wusste ich noch..."

16 May until 21 June

room I & II
Lee Wagstaff, photographs

Peter Aspell, Stephen Barker, Jan Czerwinski, Matthew Dayler Rodolphe Deville, Martin Fivian, Allen Frame, Max Grüter, Dieter Hall, Christoph Hänslı, Cherry Hood, Marcus Leatherdale, Attila Richard Lukacs, Margaret Morgan, Andrea Muheim, Richard Müller, Walter Pfeiffer, Mauro Restiffe, Eliane Rutishauser, Gyle Ryon, James Sheehan, Philipp Spätı, Lee Wagstaff, Karlheinz Weinberger, Chantal Wickı, Pascale Wiedemann, Hans Witschi

Kunstmuseum Thun

Thunerhof, Hofstettenstrasse 14, CH-3600 Thun
Tel: +41 (0)33 225 84 20, Fax: +41 (0)33 225 89 06
kunstmuseum@thun.ch, www.kunstmuseumthun.ch

18.1. - 16.3.2003

Anders Petersen «Ich Dich lieben, Du mich auch?»

Yoshiko Seino The Sign of Life

Roni Horn Recent works

29.3. - 25.5.2003

FOTOMUSEUM WINTERTHUR

Grüzenstrasse 44
CH-8400 Winterthur
Tel: 052/233 60 86
www.fotomuseum.ch

Di - Fr 12 - 18 Uhr
Mi 12 - 19.30 Uhr
Sa/So 11 - 17 Uhr

Camille Graeser – Artist and Designer: February 9 to April 27, 2003

Anna and Bernhard Blume – Transcendental Constructivism: February 9 to April 27, 2003

Hans Hinterreiter – Paintings around «Allianz»: March 2 to April 27, 2003

Schweiz konkret 2: Clara Friedrich, Verena Loewensberg, Sophie Taeuber-Arp: until February 2003

The Rockefeller Dining Room (permanent)

haus konstruktiv

Wednesday–Friday 12 am–6 pm
Saturday/Sunday 11 am–6 pm
Closed Monday/Tuesday

Haus Konstruktiv
Selnaustrasse 25, CH-8001 Zurich
Phone +41 01 217 70 80, Fax +41 01 217 70 90
info@hauskonstruktiv.ch
www.hauskonstruktiv.ch

June/August 2003
Kendell Geers
and
The African Exile Museum

April/May 2003
bewitched, bothered and bewildered
spatial emotion in art & architecture

February/March 2003
re:view
Switzerland's most promising
young video artists
Collection

migros museum
Museum für Gegenwartskunst Zürich

migros museum für gegenwartskunst
Limmatstrasse 270
CH-8005 Zürich
Di–Fr 12–18h, Sa/So 11–17h
T +411277 20 50 F +411277 62 86
www.migrosmuseum.ch

	H001 - Hatoum, Mona	P001 - Pippin, Steven
1. Abramovic, Marina	H001. Hatoum, Mona	P001. Pippin, Steven
3. Azul, Pablo	H002. Hybert, Fabrice	P002. Potrc, Marjetica
4. Are You Meaning Company	H003. Höller, Carsten	P003. Pietrousti, Cesare
11. Baldessari, John	H004. Hite, Shere	P004. Pistoletto, Michelangelo
2. Bock, John	H006. Hoeck, Richard	P006. Paik, Nam June
3. Boltanski, Christian	H008. Hoffmann, Roald	R001. Rhoades, Jason
4. Birnbaum, Dara	J003. Jonas, Joan	R002. Rist, Pipilotti
5. Brossa, Joan	K001. Kelley, Mike	R005. Rosler, Martha
8. Barney, Matthew	K002. Kinmont, Ben	S001. Slominski, Andreas
0. Bourgeois, Louise	K003. Knowles, Alison	S002. Smith, Michael
1. Clark, Lygia	K004. Kusolwong, Surasi	S003. Spero, Nancy
1. Cohen, Amy E.	K008. Karamustafa, Gülsün	S004. Sala, Anri
4. Cuevas, Minerva	K010. Kaltenbach, Steve	T001. Tiravanija, Rirkrit
1. Durham, Jimmie	K011. Kuri, Gabriel	T002. Trockel, Rosemarie
2. Diller+Scofidio	K012. Koo, Jeong-a	T003. Tzaig, Uri
1. Eichhorn, Maria	L001. Lavier, Bertrand	T005. Tayou, Pascale Marthine
4. Elmgreen & Dragset	L002. Lozano, Lee	V001. Varela, Francisco J.
5. Eliasson, Olafur	L005. Lotringer, Sylvère	W001. Weiner, Lawrence
1. Feldmann, Hans-Peter	M002. McCarthy, Paul	W002. Wurm, Erwin
2. Friedman, Yona	M003. Marclay, Christian	W003. West, Franz
01. Gilbert & George	M004. Messenger, Annette	↓ and many more to come!
02. Gillick, Liam	M005. Myles, Eileen	DO IT at e-Flux
03. Gonzalez-Torres, Felix	M012. Mekas, Jonas	www.e-flux.com
04. Graham, Dan	N001. Nauman, Bruce	
05. Gordon, Douglas	N002. Narkevicius, Deimantas	
06. Grigely, Joseph	O001. Ono, Yoko	Curated by
07. Gonzalez-Foerster, Dominique	O002. Osorio, Pepón	Hans Ulrich Obrist
08. Grossarth, Ulrike	O003. Ortega, Damian	ePublished by
12. Gotovac, Tomislav	O005. Ondak, Roman	e-flux
13. Gill, Simryn		Architecture and design by
		FDTdesign, NY



eyekon <on/offline media> www.eyekon.ch



**fine art
handling**

177 water street
brooklyn, new york
11201-1111
718 875 5050
fax 718 852 5723
www.atelier4.com

THE ONLY COMPREHENSIVE BOOK SERIES FEATURING CONTEMPORARY ARTISTS.

Please use the order form enclosed in this issue
and send it to the following address:

PARKETT, Quellenstrasse 27, CH-8031 Zürich
Telefon +41-1-271 81 40, Fax 41-1-272 43 01
PARKETT, 155 Av. of the Americas, New York, NY 10013
phone (212) 673 2660, fax (212) 271 0704

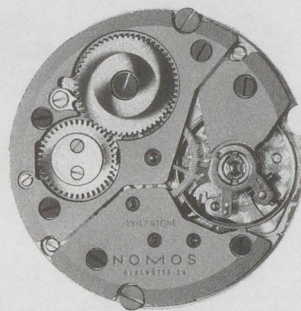
www.parkettart.com

PARKETT

THE PARKETT SERIES WITH CONTEMPORARY ARTISTS
DIE PARKETT-REIHE MIT GEGENWARTSKUNSTLERN



Tangente 690 € (unverb. Preisempf.)



NOMOS Werk 1 TS

NOMOS GLASHÜTTE · SA

etwa bei: Basel **Spinnler und Schweizer**; Bern **Uhrsachen**; Olten **Brunner**; Zürich **Bieri** ■ Augsburg **Mayer**; Berlin **Lorenz, Wempe**; Bielefeld **Böckelmann**; Bonn **Kersting, Toussaint**; Dresden **Wempe**; Düsseldorf **Blome, Wempe**; Frankfurt **Christ Kaiserstraße, Wempe**; Halle **Schulz**; Hamburg **Ohle, Wempe**; Hannover **Wempe**; Karlsruhe **Christensen**; Koblenz **Hofacker**; Köln **Berghoff, Wempe**; Leipzig **Schneider, Wempe**; München **Huber, Klefer, Wempe**; Münster **Freisfeld**; Wiesbaden **Hembd** ■ Wien **Wempe** ■ Paris **Wempe** ■ Mailand **Rocca**; Turin **Rocca** ■ Barcelona **BelClock**; Las Palmas **Olivin Canarias**; Madrid **Wempe** ■ London **Watch Gallery, Wempe** ■ Amsterdam **Hermann Benard**; Den Haag **van Willegen** ■ Budapest **Poen** ■ New York **D'Fly, Wempe** ■ Singapur **Sincere** ■ Tokyo **Osawa**

www.glashuette.com ■ nomos@glashuette.com



Zürichsee
Druckereien AG

© by www.sergelreis.ch



Kontaktfreudig

Zürichsee Druckereien AG • Seestrasse 86 • Postfach • 8712 Stäfa • Telefon 01 928 53 03 • Telefax 01 928 53 10 • Internet www.zsd.ch

Kunsttransporte in alle Erdteile



«In den Kunsttransporten, wer nicht das Beste hat,
hat nichts»
(frei nach Olaf Gulbransson)

**MÖBEL-
TRANSPORT
AG**



**für
sorgfältige
Transporte**

Gaswerkareal
8010 Zürich
Tel. 01 733 51 11
Fax 01 730 88 80

Genuastrasse 14
4142 Münchenstein-Basel
Tel. 061 331 88 55
Fax 061 331 80 47

E-Mail: moebel@moebel-transport-ag.com
<http://www.moebel-transport-ag.com>

Filiale in Chiasso

International Contemporary Art Fair

February
13 - 18, 2003
Madrid

International
Contemporary
Art Experts Forum

Parque Ferial
Juan Carlos I
28042 Madrid

Apdo. de Correos 67.067
28080 Madrid
España

Tel.: (34) 91 722 50 17
Fax: (34) 91 722 57 98

arco@ifema.es
www.arco.ifema.es



IBERIA
OFFICIAL CARRIER

AR

CO

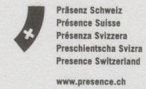
03
S U I Z A



ICEX



Telefónica



Art | 34 | Basel

18-23 | 6 | 03

Die Internationale Kunstmesse – The International Art Show
La Foire internationale d'art – La Mostra internazionale d'arte
Art 34 Basel, MCH Messe Basel AG, CH-4021 Basel
Fax +41 58 206 26 86, info@ArtBasel.com, www.ArtBasel.com

mch
messe schweiz

 **UBS**
Financial Services Group

GAST
Kunst
STADT
2003
Zürich
WIEN

9th International Contemporary Art Fair

28–31 March 2003

ABB Hall 550

Zürich-Oerlikon

Phone +41 1 381 00 52

mail@kunstzuerich.ch

www.kunstzuerich.ch

Galleries from the guest city:

Charim

Johannes Faber

Feichtner & Mizrahi

Georg Kargl

Knoll

Christine König

Kunsthalle 8 / Kunstbuero

Krobath Wimmer

Meyer Kainer

Exhibition: Contemporary art from Vienna

Curator: Dr. Brigitte Huck

LISTE 03

THE YOUNG ART FAIR IN BASEL

June 17-22, 2003

Opening reception: Monday, June 16, 6-10 p.m.
Wartec pp, Burgweg 15, CH-4058 Basel
T/F: ++41/61/692 20 21, info@liste.ch, www.liste.ch

LISTE 96-02

Participating Galleries

Austria: Hoffmann & Senn, Vienna (98-99) - Krobath Wimmer, Vienna (98-99) - Mezzanin, Vienna (00-02) - Offspace, Vienna (02) - Raum aktueller Kunst, Vienna (96-98) **Belgium:** Annette de Keyser, Antwerp (98-00) - Cathrine Bastide, Brussel (01-02) - Drantmann, Brussel (02) - Stella Lohaus, Antwerp (01-02) - Mot & Van den Boogaard, Brussel (97-98) - Zeno X, Antwerp (96) **Czech. Republic:** MXM, Praha (97-98) **Danmark:** Tommy Lund, Copenhagen (00-01) - Nils Staerk, Copenhagen (98-00) - Stalke, Copenhagen (98-00) - Nicolai Wallner, Copenhagen (96-98) **France:** &: gb agency, Paris (02) - Air de Paris, Paris (96-97) - Anton Weller, Paris (99-00) - Chez Valentin, Paris (98-01) - Anne de Villepoix, Paris (96-97) - Glassbox, Paris (99) - Jousse entreprise, Paris (02) - Romain Larivière, Paris (01) - Loevenbruck, Paris (02) - Météo, Paris (97) - Emmanuel Perrotin, Paris (99-00) - Praz-Delavallade, Paris (97-98) - Michel Rein, Tours (98) - Sanguine, Paris (96) - François Vigna, Nice (01-02) **Germany:** Arndt & Partner, Berlin (96-97) - Bochynek, Dusseldorf (99-00) - Paula Bötcher, Berlin (98-00) - BQ, Cologne (01-02) - Mehdi Chouakri, Berlin (97) - Contemporary Fine Arts, Berlin (98) - Eigen + Art, Berlin (96-98) - Enders Projects, Frankfurt (01-02) - Fehrking Wiesehöfer, Cologne (02) - Karin Guenther, Hamburg (01-02) - Hammelehle und Ahrens, Stuttgart (96-97) - Kamm, Berlin (01-02) - Kapinos, Berlin (99-00) - Klosterfelde, Berlin (96) - loop, Berlin (99-01) - Meyer Riegger, Karlsruhe (98-99) - Neu, Berlin (96) - neugerrischneider, Berlin (96-97) - Giti Nourbakhsh, Berlin (01-02) - Sabine Schmidt, Cologne (99) - Sies + Höke, Dusseldorf (02) - Barbara Thumm, Berlin (00) - Barbara Weiss, Berlin (96) - Enja Wonneberger, Kiel (99-02) **Great Britain:** Asprey Jacques, London (02) - Cabinet, London (97) - Doggerfisher, Edinburgh (02) - Stephen Friedman, London (96) - Laure Genillard, London (96) - Hales, London (98-00) - Modern Art, London (99-02) - Nylon, London (01-02) - Andrew Mummery, London (98-01) - Maureen Palay, London (96) - Robert Prime, London (96-97) - Karsten Schubert, London (96) - The Agency, London (97-99) - The Approach, London (02) - The Modern Institute, Glasgow (99-01) - Emily Tsingou, London (00) - Anthony Wilkinson, London (97-99) - Vilma Gold, London (01-02) - VTO, London (01-02) **Greece:** Ice Box, Athens (97-98) **Holland:** Paul Andriess, Amsterdam (96-97) - Casco, Utrecht (01) - De Expeditie, Amsterdam (98-01) - De Praktijk, Amsterdam (99-00) - Annet Gelink, Amsterdam (00-01) - Slewé, Amsterdam (97-98) - Cokkie Snoei, Rotterdam (99-01) - Diana Stigter, Amsterdam (02) - Fons Welters, Amsterdam (97-98) - **Israel:** Sommer Contemporary Art, Tel Aviv (99-02) **Italy:** Massimo de Carlo, Milano (96) - Studio Guenzani, Milano (96) - Emi Fontana, Milano (96) - Francesca Kaufmann, Milano (01-02) - Franco Noero, Torino (00-02) - Laura Pecci, Milano (01-02) - Pinksummer, Genova (01-02) - Raucchi/Santamaria, Naples (01-02) - Sonia Rosso, Pordenone (01-02) S.A.L.E.S., Roma (97) - The Box, Torino (98) - Paolo Vitolo, Milano (96-97) - Zero, Piacenza (02) **Japan:** Hayakawa, Tokyo (01) - Kodama, Osaka (02) - Tomio Koyama, Tokyo (97-00) - Side 2, Tokyo (00) **Mexico:** Kurimanzutto, Mexico D.F (02) **New Zealand:** Hamish McKay, Wellington (01-02) **Norway:** c/o Atle Gerhardsen, Oslo (97-98) **Poland:** Foksal Foundation, Warsaw (00-02) **Portugal:** Zé dos Bois, Lisboa (98) **Slovenia:** Skuc, Ljubljana (02) **Spain:** Espacio Minimo, Murcia (96) - Emilio Navarro, Madrid (97-98) **Sweden:** Andréhn-Schiptjenko, Stockholm (96-97) - Andreas Brändström, Stockholm (96) - Flach, Stockholm (99-00) - Charlotte Lund, Stockholm (97) - Magnus Karlsson, Stockholm (99-01) - Schaper Sundberg, Stockholm (99-01) **Switzerland:** Ars Futura, Zurich (97) - Field, Zurich (99) - Peter Kilchmann, Zurich (96-98) - Nicolas Krupp, Basel (01-02) - Urs Meile, Luzern (96-97) - Edward Mitterand, Geneva (02) - Francesca Pia, Berne (97-02) - Walcheturm, Zurich (96-00) **Russia:** Aidan, Moscow (98-00) **USA:** Dan Bernier, Santa Monica (96) - Brownstone, New York (99-01) - Chicaco Project Room, Chicago (99-00) - China Art Objects, Los Angeles (00-02) - CRG Art, New York (96) - Goldman Tevis, Los Angeles (01-02) - Morris Healy, New York (96-97) - Jack Hanley, San Francisco (96-00) - Casey Kaplan, New York (97-98) - Leo Koenig Inc, New York (00) - Andrew Kreps, New York (00-02) - Lombard-Freid, New York (98-02) - Low, Los Angeles (01) - Ten in One, New York (01-02) - Jack Tilton, New York (96) - Susanne Vielmetter, Los Angeles (01) - David Zwirner, New York (96)

(in alphabetical order)

Mainsponsor: E. GUTZWILLER & CIE, BANQUIERS, Basel

buy
art!

27. April – 1. Mai 2003

art frankfurt

Die europäische Messe für junge Kunst: täglich von 11–20 Uhr, Halle 1,
Eingang City. Für Fachbesucher und Publikum, Infoline +49(0)69 75 75
66 64, www.artfrankfurt.de

THE ARMORY SHOW

The International Fair
of New Art

2003

THE ARMORY SHOW

The International Fair
of New Art

MARCH 7-10, 2003 NEW YORK CITY PIERS 88 & 90 TWELFTH AVENUE AT 48TH & 50TH STREETS

WWW.THEARMORYSHOW.COM

AMSTERDAM Annet Gelink Gallery Torch Gallery Galerie Fons Welters ANTWERP Zeno X Gallery ATHENS Bernier/Eliades Rebecca Camhi ATLANTA Fay Gold Gallery BERLIN Arndt & Partner carlier/gebauer Galerie Volker Diehl Galerie EIGEN + ART Galerie Max Hetzler Klosterfelde Galerie Neu Galerie Markus Richter Galerie Thomas Schulte Springer & Winckler Galerie Galerie Barbara Thumm BOSTON Barbara Krakow Gallery BROOKLYN Bellwether Pierogi Roebbling Hall CHICAGO Rhona Hoffman Gallery Donald Young Gallery COLOGNE Galerie Gisela Capitain Galerie Ulrich Fiedler Michael Janssen Gallery Johnen/Schöttle Galerie Christian Nagel Galerie Aurel Scheibler COPENHAGEN Galleri Nicolai Wallner DUBLIN Kerlin Gallery DÜSSELDORF Sies + Höke Galerie FRANKFURT L.A. Galerie-Lothar Albrecht GLASGOW The Modern Institute HAMBURG Galerie Ascan Crone, Andreas Osarek Galerie Vera Munro Produzentengalerie KARLSRUHE Meyer Riegger Galerie LONDON The Approach aspreyjacques Sadie Coles HQ Corvi-Mora Stephen Friedman Gallery greengrassi Magnani Victoria Miro Gallery Modern Art Maureen Paley Interim Art The Paragon Press White Cube/Jay Jopling Anthony Wilkinson Gallery LOS ANGELES ACME. China Art Objects Galleries Marc Foxx Mary Goldman Gallery Michael Kohn Gallery Regen Projects Richard Telles Fine Art Susanne Vielmetter Los Angeles Projects MADRID Galeria Marta Cervera MARSEILLE Galerie Roger Pailhas MEXICO CITY Nina Menocal MILAN Galleria Massimo De Carlo MOSCOW Aidan Gallery XL Gallery NEW YORK 303 Gallery Brooke Alexander Alexander and Bonin American Fine Arts, Co. Artemis Greenberg Van Doren Gallery Peter Blum Marianne Boesky Gallery Tanya Bonakdar Gallery Spencer Brownstone Gallery Christine Burgin/Julie Sylvester Cheim & Read James Cohan Gallery Cohan Leslie and Browne CRG Gallery D'Amelio Terras Deitch Projects Feigen Contemporary Ronald Feldman Fine Arts, Inc. Fredericks Freiser Gallery Sandra Gering Gallery Barbara Gladstone Gallery Marian Goodman Gallery Gorney Bravin + Lee Grant Selwyn Fine Art Greene Naftali I-20 Gallery Susan Inglett Casey Kaplan 10-6 Paul Kasmin Gallery Sean Kelly Gallery Anton Kern Gallery Nicole Klagsbrun Gallery Leo Koenig, Inc. Andrew Kreps Gallery Lehmann Maupin Galerie Lelong Lombard-Freid Fine Arts Lühring Augustine Florence Lynch Gallery Maccarone, Inc. Matthew Marks Gallery Sara Meltzer Gallery Metro Pictures Robert Miller Gallery Yossi Milo Gallery Paul Morris Gallery Murray Guy Carolina Nitsch Nolan/Eckman Gallery P•P•O•W PaceWildenstein Friedrich Petzel Gallery Postmasters Gallery The Project Yancey Richardson Gallery Rivington Arms Julie Saul Gallery Kenny Schachter Contemporary Jack Shainman Gallery Brent Sikkema Stux Gallery Team Gallery Jack Tilton/Anna Kustera Gallery Leslie Tonkonow Artworks + Projects Henry Urbach Architecture David Zwirner OSAKA Kodama OSLO Galleri Wang PARIS Air de Paris Art:Concept Galerie Anne de Villepoix Yvon Lambert Galerie Nelson Galerie Nathalie Obadia Galerie Emmanuel Perrotin Galerie Almine Rech Galerie Thaddaeus Ropac SAN FRANCISCO Rena Bransten Gallery Jack Hanley Gallery SAN GIMIGNANO Galleria Continua SAN JOSÉ, COSTA RICA Jacob Karpio Galería SANTA MONICA Angles Gallery Blum & Poe Rosamund Felsen Gallery Richard Heller Gallery Patrick Painter, Inc. SÃO PAULO Galeria Fortes Vilaça Galeria Luisa Strina SEVILLE Galería Pepe Cobo STOCKHOLM Andréhn-Schiptjenko Galleri Magnus Karlsson SYDNEY Sarah Cottier Gallery Roslyn Oxley9 Gallery TEL-AVIV Sommer Contemporary Art TOKYO Taka Ishii Gallery Tomio Koyama Gallery Ota Fine Arts Gallery Side 2 TURIN Galleria Franco Noero TORONTO Susan Hobbs Gallery VIENNA Kerstin Engholm Galerie Georg Kargl Christine König Galerie Galerie Krinzinger Gabriele Senn Galerie ZÜRICH Galerie Hauser & Wirth Mai 36 Galerie Parkett Editions Scalo Bob van Orsouw Gallery

OPENING NIGHT PREVIEW GALA TO BENEFIT THE MUSEUM OF MODERN ART, NEW YORK THURSDAY MARCH 6 2003
FOR INFORMATION ABOUT THE OPENING NIGHT PREVIEW GALA CALL 212.708.9680 OR EMAIL SPECIALEVENTS@MOMA.ORG

THE ARMORY SHOW OFFICE
59 NINTH AVENUE, SUITE 201 NEW YORK, NY 10011
TEL 212.645.6440 FAX 212.741.2063 INFO@THEARMORYSHOW.COM

BARNABY FURNAS, COUPLET #1, 2002
COURTESY: MARIANNE BOESKY GALLERY
ROMAN LUBA design

**SUBSCRIBE TO A SMALL
MUSEUM AND A LARGE LIBRARY
WITH CONTEMPORARY ARTISTS.**

**ABONNIEREN SIE EIN KLEINES
MUSEUM UND EINE GROSSE
BIBLIOTHEK MIT
GEGENWARTSKÜNSTLERN.**

PARKETT

**THE PARKETT SERIES WITH CONTEMPORARY ARTISTS
DIE PARKETT-REIHE MIT GEGENWARTSKÜNSTLERN**

Please use the order form enclosed in this issue and send it to the following address:
Bitte benützen Sie die Bestellkarte, die in diesem Band beiliegt, und schicken Sie diese an folgende Adresse:

**PARKETT, Quellenstrasse 27, CH-8031 Zürich,
Tel. +41-1-271 81 40, Fax +41-1-272 43 01**

**PARKETT, 155 Avenue of the Americas, 2nd floor
New York, NY 10013**

phone (212) 673 2660, fax (212) 271 0704

www.parkettart.com

art on paper

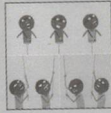
BACK TO BLACK: VISIONARY ARCHITECTURAL DRAWINGS

THOMAS NOZKOWSKI / LAYLAH ALI / AUGUST SANDER

Gallery Walks: Helsinki and Stockholm

Louis-Antoine Prat on collecting old master drawings

Curator Ann Yonemura discusses Japanese Prints



Now published **10 times** a year!

For an issue preview and to subscribe visit our website at www.artonpaper.com

Art on Paper, 39 East 78th Street, New York, NY 10021 / Tel. 212.988.5959 / Fax 212.988.6107 / info@artonpaper.com

DANIEL BUREN

DESCRIPTIVE CATALOGUE

Written by Annick Boissard and Daniel Buren

Chronological descriptive catalogue

Tome II 1964/1966

Introduction by Christian Besson 341 works of art 188 pages 338 color plates
Published by Éditions 11/28/48 and Musée d'art moderne Lille Métropole, Villeneuve d'Ascq, France

Tome XIII 1997/1999

Introduction by Bernard Blistène 109 works of art 192 pages 400 color plates
Published by Éditions 11/28/48 and Centre Georges Pompidou Center, Paris, France



Thematic descriptive catalogue

Tome 2 Cabanes éclatées 1975/2000

Introduction by Alex Alberro and Nora Alter 55 works of art 112 pages 164 color plates 26 black and white plates
Published by Éditions 11/28/48

ORDER FORM

	Europe (+5,5% taxes)	All other Countries	Quantity	Total
V2 Cabanes éclatées	€ 74,70	€ 70,80	X	= € _____
Tome II 1964/1966	€ 74,00	€ 70,14	X	= € _____
Tome XIII 1997/1999	€ 69,00	€ 65,40	X	= € _____

Shipping and Handling fees:

France	_____			= € 0
Europe	_____	X € 8		= € _____
Africa, United States, Canada, Middle East	_____	X € 12,50		= € _____
All other countries	_____	X € 19,35		= € _____
Total				= € _____

Please send your payment along with a copy of this order form:

- France:
 - ▶ by Check
 - ▶ by Wire Transfer
- **Check** payable to the order of **Éditions 11/28/48**
- **Wire Transfer** to: BNP Paribas n° 10061504 - Clé RIB 10 - Code Banque 30004 - Code agence 963
64, avenue de la Division Leclerc 93350 Le Bourget France
(Customer responsible for all bank charges)

- All other countries:
 - ▶ by Wire Transfer

Name/Address.....

Phone number.....Fax.....

Date.....E-mail.....

Éditions 11/28/48

11, avenue Francis de Pressensé – 93350 Le Bourget – France – Phone/Fax : 33(0)1 48 38 20 74
editions11/28/48@hotmail.com

Blasser Schimmer/a pale gleam ist der Katalog zur Sammlung Mondstudio. In sieben übergreifenden Kapiteln stellt der Abbildungsteil zentrale Blickrichtungen auf europäische und amerikanische Malerei der letzten 20 Jahre vor. Er zeigt wichtige Arbeiten von Andy Warhol, Robert Ryman, Gerhard Richter, Alex Katz, Herbert Brandl, Katharina Grosse, Helmut Federle, Bernard Frize, David Reed, Günter Umberg, Joseph Marioni, Stephan Baumkötter, Tamara Grčić, Ingo Meller, John Wesley, Jerry Zeniuk, Karin Sander, Remy Zaugg und vielen mehr. Katalogessays stellen die Werke in einen zeitgenössischen Diskurs. Auch dadurch wird dieses Buch zu einer Einladung zum Sammlungsbesuch.

Blasser Schimmer a pale gleam

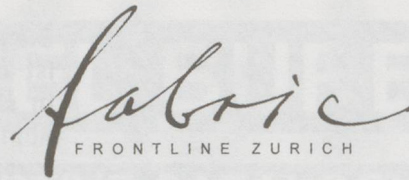
Blasser Schimmer/a pale gleam
Sammlung Mondstudio collection
312 Seiten, ca. 300 Abbildungen
23 x 19 cm, Plastikbroschur
Texte in deutscher
und englischer Sprache
Gimlet Verlag Köln

ISBN 3-9803661-3-8
€ / US\$ 65,-
SFR 120,-
Erhältlich im gut
sortierten Buchhandel

Texte von Beatrice von Bismarck, Helmut Federle, Tamara Grčić, Steffi Hartel, Joseph Marioni, Ingo Meller, David Reed, Bernward Reul, Bernhard Schwenk, Hellmut Seemann, Alan Uglow, Günter Umberg, Nicola von Velsen und ein Interview mit dem Designer Konstantin Grčić.

Es kann nie schaden, einen
„Blassen Schimmer“ zu haben.

“It's all about contemporary painting!”



ART EDITIONS ON SILK

MICHAEL RAEDECKER EDITION FOR PARKETT NR. 65

SOPHIE CALLE EDITION FOR PARKETT NR. 36

KATHARINA FRITSCH

UGO RONDINONE

URS FISCHER

LAWRENCE WEINER FOR WWF

CHRISTA NAEHER

MARKUS OEHLER

MARTIN KIPPENBERGER

WERNER BÜTTNER

HEIMO ZOBERNIG

LUIS CLARAMUNT

MEUSER

ALBERT OEHLER

GÜNTHER FÖRG

HUBERT KIECOL

JÖRG SCHLICK

THE ADDRESSES FOR THE WORLD'S FINEST SILK PRODUCTS:

FABRIC FRONTLINE SEIDENSALON BAHNHOFSTRASSE 25 8001 ZÜRICH
AND ANKERSTRASSE 118 8004 ZÜRICH WWW.FABRICFRONTLINE.CH

AND THE OUTSTANDING PLACE FOR FINE FOOD:

SEIDENSPINNER RESTAURANT ANKERSTRASSE 120 8004 ZÜRICH
WWW. SEIDENSPINNER.CH

Schweizerische Treuhandgesellschaft

Ihr Partner für Vermögensverwaltung und Beratung



www.stg.ch

- Vermögensberatung und Asset Management
- Buchführungen in Zusammenhang mit der Vermögensbetreuung
- Beratung in Steuer-, Rechts- und Erbschaftsfragen
- Finanzplanung
- Trusts und Stiftungen
- Fine Art Services
- Executive search
- Immobiliendienstleistungen

**Die Gesellschaft für die individuelle Betreuung
aller Ihrer Vermögensangelegenheiten**



Schweizerische Treuhandgesellschaft
Société Fiduciaire Suisse

Basel +41 (0)61 277 55 00, Bern +41 (0)31 326 73 00, Genève +41 (0)22 710 74 00, Lausanne +41 (0)21 728 37 50,
Lugano +41 (0)91 913 77 00, Zürich +41 (0)1 219 79 00

GALLERIA CARDI & CO
CORSO DI PORTA NUOVA, 38
I - 2 0 1 2 1 M I L A N O
T . + 3 9 0 2 6 2 6 9 0 9 4 5
F . + 3 9 0 2 6 2 6 9 4 0 1 6
WWW.GALLERIACARDI.COM

NICOLA DE MARIA

DECEMBER 2002 - JANUARY 2003

PETER HALLEY

FEBRUARY - MARCH 2003

MALCOLM MORLEY

APRIL - MAY 2003

DAVID SALLE

JUNE - JULY 2003

GALLERIA CARDI
PIAZZA SANT'ERASMO, 3
I - 2 0 1 2 1 M I L A N O
T . + 3 9 0 2 2 9 0 0 3 2 3 5
F . + 3 9 0 2 2 9 0 0 3 3 8 2
INFO@GALLERIACARDI.COM



STEPHAN **BALKENHOL**
JANUARY - FEBRUARY 2003

GALERIE THADDAEUS ROPAC
7 RUE DEBELLEME, 75003 PARIS TEL: 331 4272 9900 FAX: 331 4272 6166 www.ropac.net

2003 / MAIN EXHIBITIONS: ERIC HATTAN / EXTRA with Virginie Barré, Olivier Blanckart, Stéphane Dafflon, Wim Delvoye, Fischli & Weiss, Sylvie Fleury, Daniel Firman, Gianni Motti, Bruno Peinado, Roman Signer / DUST MEMORIES with Mel Bochner, Jordi Colomer, Hubert Dupraz, Tom Friedman, Rolf Julius, Sloan Leblanc, Cornelia Parker, Michael Ross, Lawrence Weiner, Erwin Wurm (list in formation) / NIC HESS / ERWIN WURM / THE LAST PAINTING SHOW group show curated by OLIVIER MOSSET / **OTHER EXHIBITIONS:** Zoe Leonard, Michel François and much more! Check our website.

2002 / MAIN EXHIBITIONS: LORI HERSBERGER with movies such as Django, Die Hard, Excalibur, Ronin, El Topo, The Searchers / UGO RONDINONE with JOHN GIORNO AND URS FISCHER / OLAF BREUNING with real doll / JIM SHAW with a new religion / STEVEN PARRINO AND JUTTA KOETHER with Black Dice, Foot, Christian Marclay, Merzbow / **OTHER EXHIBITIONS:** Michael Ross / Maria Marshall / Annemarie Schwarzenbach / Yves Netzhammer / Erik Parker / Fia Backström / Blair Thurman / Sophie Bernard / Mai-Thu Perret / Kim Gordon / Valentin Carron / ONE DAY with Rebecca Bird, Becket Bowes, Edward Chu, Tim & Frantiska Gilman, Margaret Howe, Paul Jacobsen, Cristopher Moss, Frank Olive, Brett Cody Rogers, Jess Segall and Toni Seratelli / **LECTURES:** Christian Jankowski / Olav Westphalen / Bice Curiger / Jim Shaw.

2001 / MAIN EXHIBITIONS: UNDER PRESSURE with Cercle Ramo Nash, Martin Creed, Simone Decker, Graham Durward, Fabrice Gygi, Eric Hattan, Pierre Joseph, Lang/Baumann, Stéphane Magnin, Thom Merrick, Takashi Murakami, Philippe Parreno, Stefan Pente, Henrik Plenge Jakobsen, Pierre Reimer, Roman Signer, @Home / GIANNI MOTTI with the Vatican Swiss Guards and as an assistant of Robert Barry, Maurizio Cattelan, Jessica Diamond, Sylvie Fleury, Thomas Hirschhorn, Pierre Huyghe, Karen Kilimnik, Sol LeWitt, Gianni Motti, Julian Opie, Kristin Oppenheim, Philippe Parreno, Ugo Rondinone, Nancy Rubin, Lily van der Stokker, Rirkrit Tiravanija, Rosemarie Trockel, Heimo Zobernig / SISLEJ XHAFA with slot machines / FABRICE GYGI with a polling station / MAYDAY MAYDAY with René Bauermeister, Peter Garfield, Tim & Frantiska Gilman, Bob Gramsma, Naoya Hatakeyama, On Kawara, Peter Land, Abigail Lane, Euan Macdonald, Thom Merrick, Jan van Dost, Sophy Rickett, Jean-Claude Ruggirello, Sontext, Jordan Tinker / CHRISTIAN JANKOWSKI with a magician, children and custom officers / **OTHER EXHIBITIONS:** Olaf Breuning / Tony Matelli / Alberto Giacometti / Lang/Baumann / Lori Hersberger / Jonathan Monk / Janine Gordon, Ludovic Jecker / Spiros Margaritis / Gelatin / Olav Westphalen / Daniel Pflumm / Roderick Buchanan / Uri Tzaig / Eric Hattan.

Curator: Marc-Olivier Wahler

more information : www.swissinstitute.net / info@swissinstitute.net

TALK IS CHEAP

SI

SWISS INSTITUTE - CONTEMPORARY ART
495 BROADWAY 3RD FLOOR / NEW YORK NY 10012
TUESDAY - SATURDAY 11 A.M. - 6 P.M.
P 212 925 2035 / F 212 925 2040

PR • HELVETIA
Arts Council of Switzerland

FONDSAMT FÜR KUNST
OFFICE FEDERAL DE LA CULTURE
UFFICIO FEDERALE DELLA CULTURA
OFFICE FEDERAL DA CULTURA
SWISS FEDERAL OFFICE OF CULTURE

PRS
PRResenz Schweiz
PRResenz Suisse
PRResenz Svizzera
PRResenz Switzerland

swiss
Swiss Air Lines



Ana Mendieta *Body Tracks*

October 19, 2002 through February 23, 2003

Christoph Rütimann *Hängen am Museum*

October 19, 2002 through January 12, 2003

Rémy Markowitsch / Michael Lin *Bibliotherapy*

February 1st, 2003 through April 27, 2003

Anton Henning *Ziemlich schöne Malereien*

May 10, 2003 through July 27, 2003

Kunstmuseum Luzern Museum of Art Lucerne

www.kunstmuseumluzern.ch

Ana Mendieta, Untitled (Death of a Chicken), 1972 Estate of Ana Mendieta and Galerie Lelong



GEIST UND GALANTERIE

KUNST UND WISSENSCHAFT IM 18. JAHRHUNDERT
AUS DEM MUSÉE DU PETIT PALAIS, PARIS

13. DEZEMBER 2002 BIS 6. APRIL 2003

AUSSTELLUNGSPROGRAMM 2003



KUNSTSTUDENTINNEN UND -STUDENTEN STELLEN AUS

16. BUNDESWETTBEWERB

31. JANUAR BIS 2. MÄRZ 2003



PAUL KLEE IM RHEINLAND

7. MÄRZ BIS 9. JUNI 2003



MENSCHEN · ZEITEN · RÄUME ARCHÄOLOGIE IN DEUTSCHLAND

9. MAI BIS 24. AUGUST 2003



DAS ALTE JAPAN

JAPANISCHE KUNSTWERKE VOM 14. - 17. JAHRHUNDERT AUS DEM TOKYO NATIONAL MUSEUM
DIE GROSSEN SAMMLUNGEN

29. AUGUST BIS 26. OKTOBER 2003



KLEINE PRINZEN

KINDERBILDNISSE VOM 16. BIS 19. JAHRHUNDERT AUS DER SAMMLUNG YANNICK UND BEN JAKOBER

3. OKTOBER 2003 BIS 4. JANUAR 2004



SCHÄTZE DER HIMMELSSÖHNE

DIE KAISERLICHE SAMMLUNG AUS DEM NATIONALEN PALASTMUSEUM TAIPEI
DIE GROSSEN SAMMLUNGEN

21. NOVEMBER 2003 BIS 15. FEBRUAR 2004

PROGRAMM 03

- 26.01.
DOUG AITKEN

08.02. - 23.03.
MARIKO MORI

18.04. - 22.06.
GERHARD MERZ

12.07. - 14.09.
FRANZ WEST

27.09. - 16.11.
ANISH KAPOOR

29.11. - 11.01.04
REMIND
Eija-Liisa Ahtila, Tacita Dean,
Anri Sala, Jane & Louise Wilson

A-6900 Bregenz Karl Tizian Platz
Telefon (+43-5574) 485 94-0
Fax (+43-5574) 485 94-8
E-Mail kub@kunsthhaus-bregenz.at
Web www.kunsthhaus-bregenz.at



Kunsthhaus Bregenz

HESSCOLLECTION

Hang zum Dissens

CentrePasquArt 18 01 – 09 03 2003

Kunsthaus Centre d'art Seevorstadt 71-75 faubourg du Lac CH 2502 Biel Bienne

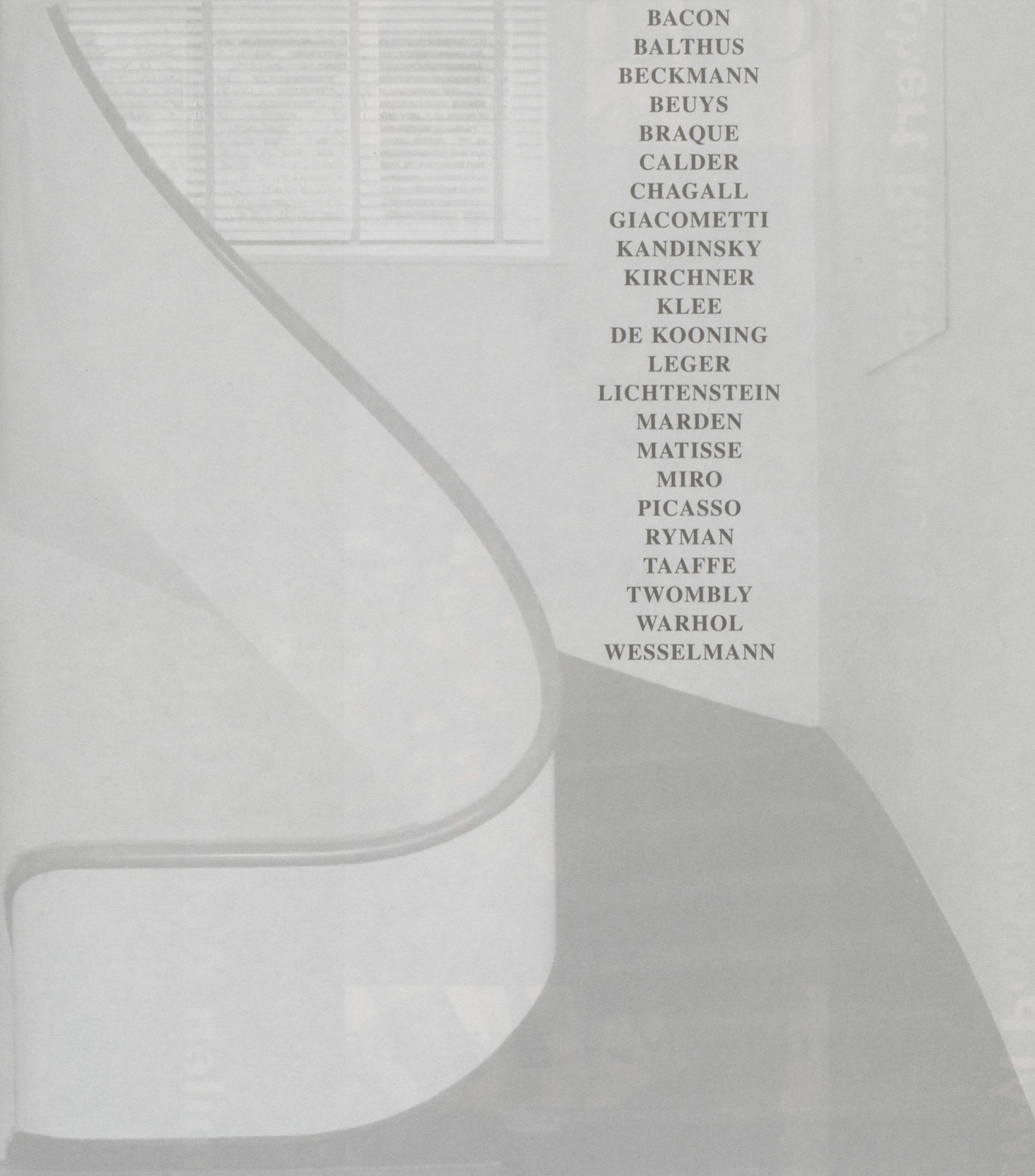
T + 41 32 322 55 86 www.pasquart.ch info@pasquart.ch Bus 11 ab Bahnhof depuis la gare

Öffnungszeiten heures d'ouverture Mi-Fr me-ve 14h-18h, Sa-So sa-di 11h-18h,

Mo-Di geschlossen lu-ma fermé

DIE GROSSEN ERHÄNGEN
11. NOVEMBER 2002 BIS 12. FEBRUAR 2003

THOMAS AMMANN FINE ART AG ZÜRICH



BACON
BALTHUS
BECKMANN
BEUYS
BRAQUE
CALDER
CHAGALL
GIACOMETTI
KANDINSKY
KIRCHNER
KLEE
DE KOONING
LEGER
LICHTENSTEIN
MARDEN
MATISSE
MIRO
PICASSO
RYMAN
TAAFFE
TWOMBLY
WARHOL
WESSELMANN

RESELBERGSTRASSE 97 · CH-8044 ZÜRICH · TEL +41 1 360 51 60 · FAX +41 1 360 51 61
WWW.AMMANNFINEART.COM · DA@AMMANNFINEART.COM

Darryl Pottorf

New Paintings

Japanese Recreational Clayworks

Robert Rauschenberg



November 23, 2002 – February 8, 2003

Jamileh Weber Gallery

CH-8001 Zurich Waldmannstrasse 6 phone +41 1 252 10 66 fax +41 1 252 11 32
info@jamilehweber.com www.jamilehweber.com

Charles LeDray



30 January – 1 March 2003

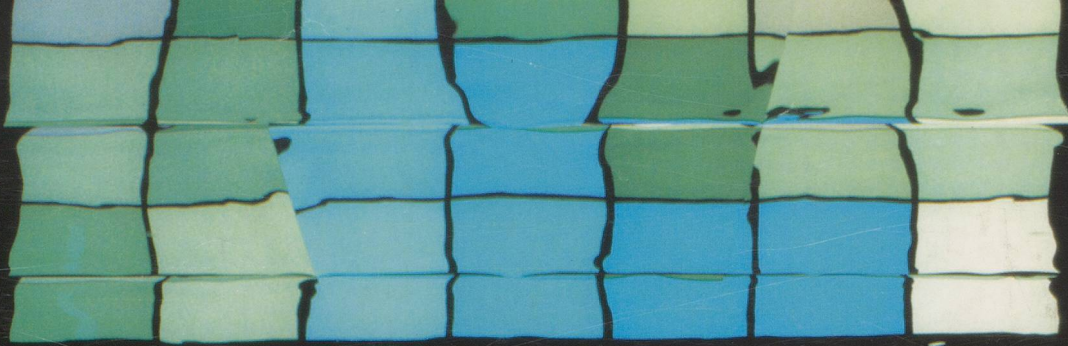
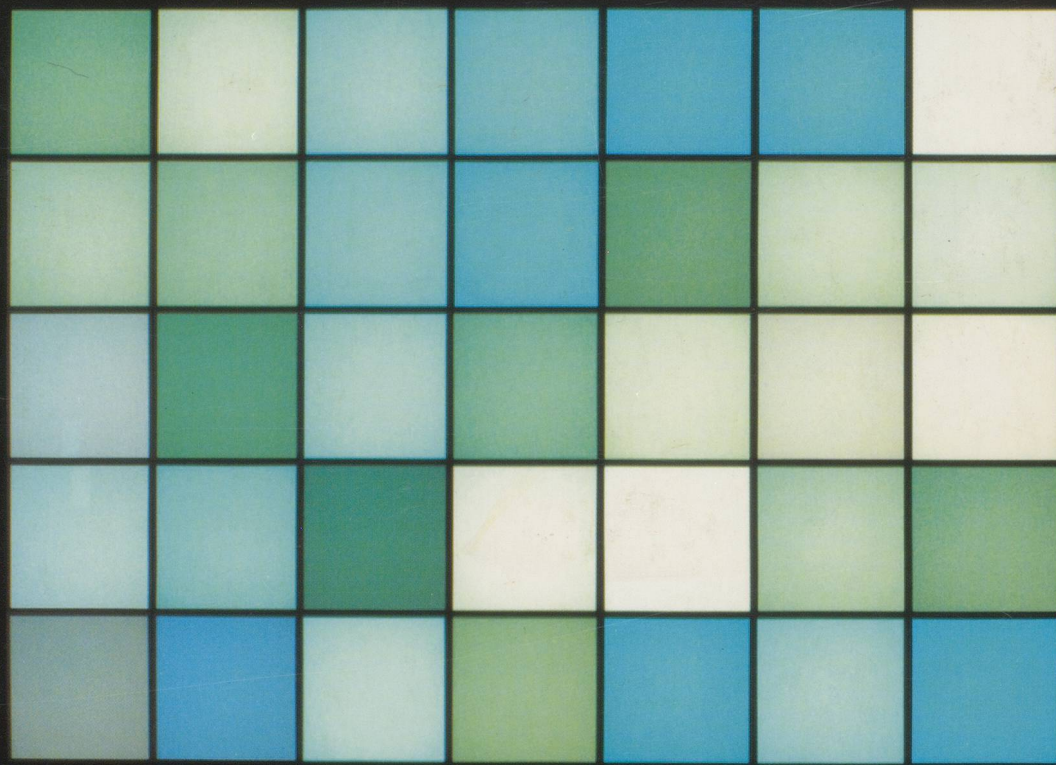
SPERONE WESTWATER
415 West 13 Street New York 10014
212/999-7337 (fax) 999-7338
www.speronewestwater.com

Jamileh Weber Gallery

CH-8001 Zurich, Waldmannstrasse 6 phone +41 1 252 10 66 fax +41 1 252 11 32
info@jamilehweber.com www.jamilehweber.com

COLLABORATION
JOHN BOCK
PETER DOIG
ARTISTS
FRED TOMASELLI
PARKETT 67

Angela Bulloch: Juliane Rehentisch / Andrew Wilson / Martin Prinzhorn
Daniel Buren: Anne Rorimer / Alison Gingeras /
Pierre Huyghe & Daniel Buren in Conversation / Special Insert by Daniel Buren
Pierre Huyghe: Jeremy Millar / Hans Ulrich Obrist / Robert Hobbs
Thyrza Nichols Goodeve in Conversation with Giuliana Bruno / Edward Dimendberg
on Allan Sekula / Les Infos du Paradis: Roberto Ohrt on Monica Bonvicini /
Cumulus from America: Nato Thompson / Cumulus from Europe: Greg Hilty



This volume of PARKETT may be taken as an invitation to roam through space: Angela Bulloch, Daniel Buren and Pierre Huyghe probe unexplored potential in works of art that betoken acts of piercing, stretching and occupation. Some of the pages, with their unusual perforations, explicitly echo Buren's most recent architectural interventions. The elaborately staged colors, movements, sounds and even icy cold of these evolving works reach out into mental spaces as well, where their extreme immateriality eludes easy accessibility. This is art of an unbridled intensity that challenges viewers and readers.

Dieser PARKETT-Band kommt einer Aufforderung gleich, durch Räume zu schweifen: Angela Bulloch, Daniel Buren und Pierre Huyghe loten unerforschte Potenziale aus – ihre Kunst steht im Zeichen des Durchdringens, der Ausdehnung und der Besetzung. Die Buchseiten selbst nähern sich zuweilen – mit ungewöhnlichen Perforationen – Burens architektonischen Eingriffen aus jüngster Zeit an. Wie sehr Raum auch ein mentaler Ort ist, machen die aufwändig inszenierten, Farbe, Bewegung, Sound oder sogar Eiseskälte entfaltenden Werke deutlich, die in ihrem Ausgreifen nie schnell erfassbar und sehr immateriell sind. Ein geradezu ausuferndes Angebot an Betrachter und Leser.