

**Zeitschrift:** Parkett : the Parkett series with contemporary artists = Die Parkett-Reihe mit Gegenwartskünstlern  
**Herausgeber:** Parkett  
**Band:** - (1999)  
**Heft:** 57: Collaborations Doug Aitken, Nan Goldin, Thomas Nirschhorn

## **Werbung**

### **Nutzungsbedingungen**

Die ETH-Bibliothek ist die Anbieterin der digitalisierten Zeitschriften auf E-Periodica. Sie besitzt keine Urheberrechte an den Zeitschriften und ist nicht verantwortlich für deren Inhalte. Die Rechte liegen in der Regel bei den Herausgebern beziehungsweise den externen Rechteinhabern. Das Veröffentlichen von Bildern in Print- und Online-Publikationen sowie auf Social Media-Kanälen oder Webseiten ist nur mit vorheriger Genehmigung der Rechteinhaber erlaubt. [Mehr erfahren](#)

### **Conditions d'utilisation**

L'ETH Library est le fournisseur des revues numérisées. Elle ne détient aucun droit d'auteur sur les revues et n'est pas responsable de leur contenu. En règle générale, les droits sont détenus par les éditeurs ou les détenteurs de droits externes. La reproduction d'images dans des publications imprimées ou en ligne ainsi que sur des canaux de médias sociaux ou des sites web n'est autorisée qu'avec l'accord préalable des détenteurs des droits. [En savoir plus](#)

### **Terms of use**

The ETH Library is the provider of the digitised journals. It does not own any copyrights to the journals and is not responsible for their content. The rights usually lie with the publishers or the external rights holders. Publishing images in print and online publications, as well as on social media channels or websites, is only permitted with the prior consent of the rights holders. [Find out more](#)

**Download PDF:** 03.04.2026

**ETH-Bibliothek Zürich, E-Periodica, <https://www.e-periodica.ch>**

Ivy with Marilyn, Boston 1973 gelatin silver print 20 x 16 inches



Nan Goldin is represented by  
Matthew Marks Gallery

523 W24th Street New York  
212 243 0200 fax 212 243 0047  
gallery@mmarks.com  
www.artnet.com/mmarks.html

# **DOUG AITKEN**

**3 0 3 GALLERY**

**525W. 22ND ST. - NEW YORK**

**TEL: +1 212 255 11 21**

**VICTORIA MIRO GALLERY**

**21 CORK STREET - LONDON**

**TEL: +44 171 734 50 82**

**HAUSER & WIRTH & PRESENHUBER**

**LIMMATSTRASSE 270 - ZURICH**

**TEL: +41 1 446 80 60**

DECEMBER

THOMAS STRUTH

JANUARY - FEBRUARY

JAMES COLEMAN

FEBRUARY - MARCH

TACITA DEAN

MAURIZIO CATTELAN

MARIAN GOODMAN GALLERY

24 WEST 57TH STREET NEW YORK, NY 10019 TEL 212 977-7160

FAX 212 581-5187 GOODMAN@MARIANGOODMAN.COM

523 W24th Street New York

212 243 0200 fax 212 243 0047

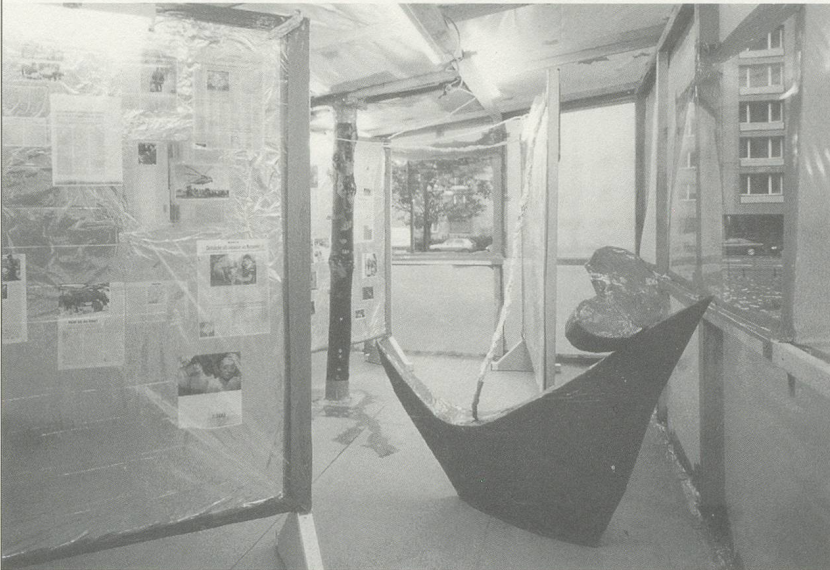
gallery@mmarks.com

www.artnet.com/mmarks.html

**Arndt & Partner**

Sophie Calle  
Peter Friedl

## **Thomas Hirschhorn**



Thomas Hirschhorn, „Ein Kunstwerk, Ein Problem“, Ausstellungsansicht, Portikus, Frankfurt a/M, 1998

Fabrice Hybert  
Via Lewandowsky  
Bjarne Melgaard  
Max Mohr  
Nedko Solakov  
Hiroshi Sugito  
Mathilde ter Heijne  
Susan Turcot

**Arndt & Partner**

Auguststraße 35  
D-10119 Berlin

Telefon +49 (30) 280 81 23  
Fax +49 (30) 283 37 38  
Email [arndt@arndt-partner.de](mailto:arndt@arndt-partner.de)  
<http://www.arndt-partner.de>

MONA HATOUM

FABRICE GYGI

THOMAS HIRSCHHORN

JOCHEN GERZ

WOLFGANG LAIB

ANTHONY CRAGG

ABIGAIL LANE

SOPHIE CALLE

MOSHE NINIO

NOBUYOSHI ARAKI

GABRIEL OROZCO

SIGMAR POLKE

DARREN ALMOND

JAVIER PÉREZ

ABSALON

THOMAS RUFF

YOON JA & PAUL DEVAUTOUR

RIRKRIT TIRAVANIJA

JOSÉ MARÍA SICILIA

JANA STERBAK

**SLEEPING WATERS**

DARREN ALMOND / FABRICE GYGI / RACHEL HARRISON / MOSHE NINIO  
NOVEMBER - DECEMBER 1999

**VIDEO COLLECTION A.S.S.N.**

(Ars Sine Scientia Nihil)

N°1 : CORALY SUARD-HIRSCHHORN

INTERVIEW THOMAS HIRSCHHORN / JEAN-CHARLES MASSÉRA

**GALERIE CHANTAL CROUSEL / 40 RUE QUINCAMPOIX / F - 75004 PARIS**

T. 01 42 77 38 87 F. 01 42 77 59 00 GALERIE.CHANTAL.CROUSEL@WANADOO.FR WWW.CROUSEL.COM

15. JANUAR BIS 12. MÄRZ 2000

# JASON RHOADES

GALERIE HAUSER & WIRTH

Limmatstrasse 270, 8005 Zürich / Tel: +41 1 446 80 50, Fax: +41 1 446 80 55 / e-mail: info@ghw.ch  
Öffnungszeiten: Di bis Fr 12 bis 18 Uhr, Sa 11 bis 16 Uhr

15. JANUAR BIS 12. MÄRZ 2000

# KAREN KILIMNIK

GALERIE HAUSER & WIRTH & PRESENHUBER

Limmatstrasse 270, 8005 Zürich / Tel: +41 1 446 80 60, Fax: +41 1 446 80 65 / e-mail: info@ghwp.ch  
Öffnungszeiten: Di bis Fr 12 bis 18 Uhr, Sa 11 bis 16 Uhr

2000

IMI KNOEBEL

ARMORY SHOW

GÜNTHER FÖRG

WINSTON ROETH

ART BASEL

MARY HEILMANN

JEAN-MARC BUSTAMANTE

PALOMA VARGA-WEISZ

HELMUT DORNER

vera munro

GALERIE VERA MUNRO

HEILWIGSTRASSE 64

20249 HAMBURG

TELEFON 040 - 47 47 46

TELEFAX 040 - 47 25 50

# MAI 36 GALERIE

VITO ACCONCI  
FRANZ ACKERMANN  
IAN ANÜLL  
JOHN BALDESSARI  
STEPHAN BALKENHOL  
TROY BRAUNTUCH  
ANKE DOBERAUER  
PIA FRIES  
ANDREAS GURSKY  
LES LEVINE  
RITA MCBRIDE  
HARALD F. MÜLLER  
MATT MULLICAN  
MANFRED PERNICE  
CHRISTOPH RÜTIMANN  
THOMAS RUFF  
JÖRG SASSE  
PAUL THEK  
LAWRENCE WEINER  
RÉMY ZAUGG

## LAWRENCE WEINER

November 27, 1999 – January 15, 2000

## The Armory Show 2000

New York, February 25 – 28, 2000

Rämistrasse 37, CH-8001 Zürich, Tel. 01 261 68 80, Fax 261 68 81

*spring 2000*

February

Seth Kaufman/John Morris

April

Jim Hodges

***ANTHONY MEIER FINE ARTS***

3007 Jackson Street San Francisco, CA 94115 (415) 351-1400

# Jean-Marc Bustamante

Inédits

*Tableaux 1978-1982*

13 JANUARY - 26 FEBRUARY 2000

# Didier Vermeiren

2 MARCH - 2 APRIL 2000

# Patrick Vanden Eynde

6 APRIL - 6 MAY 2000

# Richard Artschwager

11 MAY - 10 JUNE 2000

ART FAIRS

# TEFAF Maastricht

18 - 26 MARCH 2000

# ART Brussels

31 MARCH - 4 APRIL 2000

---

---

# Xavier Hufkens

Sint-Jorisstraat 6-8 rue Saint-Georges

Brussel 1050 Bruxelles

TEL. 32 (0)2 646 63 30 - FAX 32 (0)2 646 93 42

[info@xavierhufkens.com](mailto:info@xavierhufkens.com)

<http://www.artnet.com/xhufkens.html>

Open Tuesday to Saturday, noon to 6 pm

**Sadie Coles**

**HQ**

*spring 2000*

winter/spring

Jim Lambie

december

Ugo Rondinone

january

Sarah Lucas

february

Elizabeth Peyton

march

John Currin

may

*INTRODUCTION: WINTER/FINE ARTS*

*BY THE EDITOR: Sadie Coles, 1991-2000*

35 Heddon Street London W1R 7LL UK [www.sadiecoles.com](http://www.sadiecoles.com)  
Tel +44 (0) 20 7434 2227, Fax +44 (0) 20 7434 2228

# *GALLERIA MASSIMO MININI*

<b>MICHELANGELO PISTOLETTO</b>	<b>SALVO</b>
<b>MARCO MAZZUCCONI</b>	<b>SOL LEWITT</b>
<b>MAURIZIO CATTELAN</b>	<b>J.G. DOKOUPIL</b>
<b>ALIGHIERO E BOETTI</b>	<b>PETER HALLEY</b>
<b>MARCO BAGNOLI</b>	<b>ROBERT BARRY</b>
<b>ETTORE SPALLETTI</b>	<b>DANIEL BUREN</b>
<b>LUCIANO FABRO</b>	<b>HAMISH FULTON</b>
<b>PIERO GILARDI</b>	<b>EVA MARISALDI</b>
<b>DAN GRAHAM</b>	<b>BERTRAND LAVIER</b>
<b>MARIO AIRO'</b>	<b>MATTHEW MC. CASLIN</b>
<b>LUIGI ONTANI</b>	<b>IAN HAMILTON FINLAY</b>
<b>GIULIO PAOLINI</b>	<b>DIDIER VERMEIREN</b>
<b>CARLA ACCARDI</b>	<b>ANDRE CADERE</b>
<b>STEFANO ARIENTI</b>	<b>ANISH KAPOOR</b>
<b>ALBERTO GARUTTI</b>	<b>BERNAR VENET</b>
<b>ALESSANDRA TESI</b>	<b>GER VAN ELK</b>
<b>VANESSA BEECROFT</b>	<b>JAN FABRE</b>
<b>GERWALD ROCKENSCHAUB</b>	<b>SERSE</b>

*Via L. Apollonio 68 - 25128 Brescia (I)*  
*phone +39.030.381950 - fax +39.030.392446*  
*E-Mail galleriaminini@numerica.it*

karyn lovegrove gallery

**Simon Periton**

January 8–February 5

**Candida Höfer**

February 12–March 11

**Polly Apfelbaum**

March 18–April 22

**Ricky Swallow**

April 29–May 27

Karyn Lovegrove Gallery  
6150 Wilshire Boulevard #8  
Los Angeles CA 90048 USA  
Telephone: 323 525 1755  
Facsimile: 323 525 1245  
Email: [lovegrovek@aol.com](mailto:lovegrovek@aol.com)  
[www.karynlovegrovegalleries.com](http://www.karynlovegrovegalleries.com)

GALERIA ■ HELGA DE ALVEAR

DR. FOURQUET 12, 28012 MADRID. TEL:(34) 91 468 05 06 FAX:(34) 91 467 51 34  
E-MAIL:dealvear@aleph-arts.org <http://aleph-arts.org/dealvear>

December 1, 1999 - January 22, 2000

KARIN SANDER

ESTUDIO ▲ HELGA DE ALVEAR

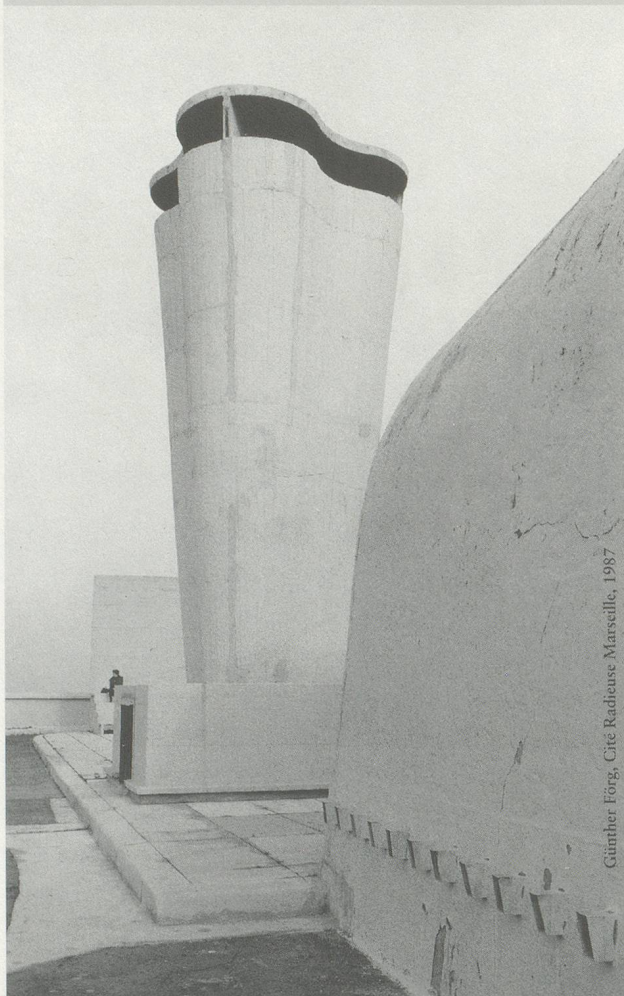
“ R A G T I M E ”

ANTONI ABAD  
PEP AGUT  
HELENA ALMEIDA  
NÚRIA CANAL  
DANIEL CANOGAR  
HANNAH COLLINS  
JOHN COPLANS  
DOUGLAS GORDON  
BRUCE NAUMAN  
ANTONI TÀPIES

GALERIE LELONG ZÜRICH

« PARS PRO TOTO »

ARCHITECTURAL PHOTOGRAPHY



Günther Förg, Cité Radieuse Marseille, 1987

27 NOVEMBER 1999 (OPEN  
WEEKEND) – 15 JANUARY 2000

GALERIE LELONG ZÜRICH  
UTOQUAI 31 • CH-8008 ZÜRICH  
TEL. (+41-)1-251 11 20 • FAX 262 52 85  
Opening Hours: Tu–Fr 11am–6pm • Sa 11am–4pm

John M Armleder

Sylvie Fleury

Gaylen Gerber

Peter Z. Herzog

Thomas Hirschhorn

Jean-Luc Manz

Thom Merrick

Olivier Mosset

Gerwald Rockenschaub

Muntean/Rosenblum

Adrian Schiess

Galerie Susanna Kulli

Davidstrasse 40

CH-9000 St. Gallen

Tel. 071 223 59 58

Fax 071 223 59 35

[susanna.kulli@avtive.ch](mailto:susanna.kulli@avtive.ch)

Offen:

Di bis Fr 14–18, Sa 10–17

14. JANUAR – 4. MÄRZ 2000

Albert **OEHLEN**

---

Martin **KIPPENBERGER**

10. MÄRZ – 29. MAI 2000

---

GALERIE GISELA CAPITAIN  
AACHENER STR. 5 D-50674 KÖLN TEL 0221-25 66 76 FAX 25 65 93

10 December 1999 to 31 January 2000

**Thomas Hirschhorn**

**galerie erna hécey** 25 bvd du Prince Henri L-1724 Luxembourg t: + 352 24 11 74 f: + 352 24 15 89  
e-mail: [galerie.erna.hecey@online.lu](mailto:galerie.erna.hecey@online.lu) gallery hours: tue - fri 2 - 7 pm, sa 11am - 5 pm



**L.A. Galerie** – Lothar Albrecht

Domstrasse 6, D-60311 Frankfurt, Telefon: (49) 69 - 28 86 87, Fax: (49) 69 - 28 09 12

**Representing:**

**ART FAIRS:**

HIROSHI SUNAIRI July – Aug. 2000

JOAN FONTCUBERTA

ART BASEL

OLIVER BOBERG

NAOAYA HATAKEYAMA

ART COLOGNE

BERNARD FAUCON

EDGAR LISSEL

ART FORUM BERLIN

ROBERT F. HAMMERSTIEL Jan. – Feb. 2000

KEN LUM Sept. – Oct. 2000

ART FRANKFURT

JOHN HILLIARD

MABEL PALACIN

THE ARMORY SHOW, NY

TRACEY MOFFATT May – June 2000

LOIS RENNER March – April 2000

LUKAS EINSELE

JAVIER VALLHONRAT



enclosed no. 1, digital b/w photograph, 84 x 112 cm

**NAN HOOVER**

FOTOARBEITEN UND ZEICHNUNGEN  
(ZUR AUSSTELLUNG ERSCHEINT EIN KATALOG)

**27.11.-15.1.2000**

**FLASH 99**

AN EXHIBITION OF YOUNG EMERGING ARTISTS IN COLLABORATION WITH INTERNATIONAL GALLERIES

**22.02.-03.3.2000**

**GALERIE PATRIK FRÖHLICH**

Mittwoch bis Freitag



Samstag



DIENERSTRASSE 21, 8004 ZÜRICH, FON+FAX: 01 242 89 00, email:patrikfroehlich@access.ch, www.artnet.com/pfroehlich.html

# GALERIE MEERT RIHOUX

SYLVIE EYBERG

January 2000

ENRICO CASTELLANI

Feb.–March 2000

RICHARD TUTTLE

April–May 2000

RUE DU CANAL 13  
1000 BRUSSELS  
VAARTSTRAAT 13  
1000 BRUSSEL  
FAX 02/219.37.21  
TEL 02/219.14.22

## Schedler

### Aktiengesellschaft

Galerie Schedler  
Josefstrasse 53  
CH 8005 Zürich  
T +41 1 440 61 20  
F +41 1 440 61 21  
zurich@schedler.ch

Tuesday to Friday 12 - 6 p.m.  
Saturday 11 a.m. - 4 p.m.

Galerie und Edition Schedler  
Dorfstrasse 56  
CH 8532 Warth  
T +41 52 747 19 46  
F +41 52 747 19 48  
warth@schedler.ch

Saturday 2 - 5 p.m.  
Sunday 11 a.m. - 5 p.m. and by appointment

www.schedler.ch  
Member of  
Association of Swiss Galleries AGS

### Galerie Schedler Zurich

**Uwe Wittwer**  
until 29 January 2000  
(Publication available)

**Hans Witschi**  
11 February to 18 March

**Eliane Rutishauser, Christoph Schneeberger,  
Stephanie Schneider / P77: Margaret Morgan**  
24 March to 29 April

**high five (beauty and sports)**  
5 May to 5 June

#### Representing:

Jean Crotti, Jan Czerwinski, Allen Frame, Max Grüter, Dieter Hall, Christoph Hänsl, Attila Richard Lukacs, Andrea Muheim, Richard Müller, Hironori Murai, Walter Pfeiffer, Eliane Rutishauser, Monika Rutishauser, Stefan Saner, Gary Schneider, Christoph Schneeberger, Pierre Sutter, Christoph Wachter, Rodney White, Alfred Wirz, Hans Witschi, Uwe Wittwer

Attend the leading international conference of more than 4,000 artists, art historians, and visual arts professionals. Over 120 scholarly sessions, the largest job placement service of its kind, annual trade and book exhibit, plus many special events.

## The 88th Annual Conference of the *College Art Association*

February 23 to 26, 2000 in New York City  
at the New York Hilton and Towers



Log on to our web site at [www.collegeart.org](http://www.collegeart.org)

# ART YEAR

THE INTERNATIONAL  
EXHIBITION GUIDE

# 2000

Artyear is published by

hopefulmonster editore via Santa Chiara 30 10122 Torino Italy  
0039.011.4367197 fx 0039.011.4369025 e-mail [hopmonst@tin.it](mailto:hopmonst@tin.it)



Alquié Anselmo Appel Arienti  
Bagnoli Baj Barzagli Beecroft  
Bernstein Bertoni Beuys Bianchi  
Blanchard Boetti Borrelli Burri  
Ceroli Chia Chiari Clemente  
Consagra Corneli Corsini Costa  
Clegg & Guttmann Cucchi De Maria Dibbets Fabro  
Ferrara Fontana Gastini Gilardi Gorgoni Graetz  
Grünfeld Guidieri Hofstadter **hopefulmonster**  
Icaro Isgrò Katz Kirkeby Kossuth Kounellis Lewitt  
Lionni Livsic Mainolfi Manzoni Maraniello Marc  
Mauri Merz Messina Mochetti Mondino Münch  
Nannucci Nicolaus Nunzio Oldenburg Ontani  
Paladino Paolini Pascali Pellizza Penone Pichler  
Pirri Pistoletto Plessi Poirier Pomodoro Quarzo  
Rossino Rotella Rückriem Ruiz Mignone Salvadori  
Sartelli Scarpitta Schnabel Serres Shine Staccioli  
Studio Azzurro Tilson Trotta Uncini Vedova Voltolini  
Wastijn & Deschuymer Wood Woodman Zorio

gallery bob van orsouw limmatstrasse 270 8005 zurich  
phone +41-1-273 11 00 fax +41-1-273 11 02

november 27  
until  
january 22, 2000  
january 29  
until  
february 26, 2000

**albrecht schneider**  
**philip akkerman**

the armory show new york, february 25 until 28, 2000

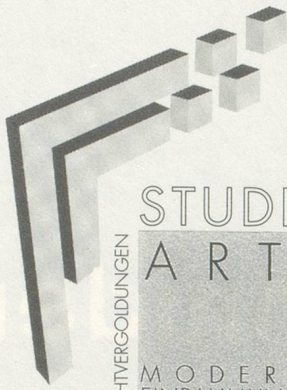
**NORMAN MAIER**

CATALOGUE AVAILABLE

**GALERIE TRABANT**

---

A - 1040 WIEN SCHLEIFMÜHLGASSE 13 TEL / FAX 0043 1 587 52 65



STUDIO  
ARTE

ECHTYERGOIDUNGEN  
MODERNE  
EINRAHMUNGEN

Studio Arte Flückiger & Fischbach AG  
Stauffacherquai 46, 8004 Zürich  
Telefon 01-241 86 71  
Telefax 01-241 35 85

## MODERNE EINRAHMUNGEN



WIR HABEN ALLE RAHMEN FÜR DIE AUSSTELLUNGEN DER

**PÄRKETT**

- EDITIONEN IM CENTRE D'ART CONTEMPORAIN, GENÈVE, IM MUSEUM LUDWIG, KÖLN, IM LOUISIANA MUSEUM, DÄNEMARK, UND IM HILL SIDE FORUM, TOKYO, HERGESTELLT.

ZU UNSEREN KUNDEN ZÄHLEN:

KUNSTSAMMLER, MUSEEN, GALERIEN, INDUSTRIE UND PRIVATE.

# Kunsttransporte in alle Erdteile



«In den Kunsttransporten, wer nicht das Beste hat,  
hat nichts» *(frei nach Olaf Gulbransson)*

**MÖBEL-  
TRANSPORT  
AG**



**für  
sorgfältige  
Transporte**

Gaswerkareal  
8010 Zürich  
Tel. 01 733 51 11  
Fax 01 730 88 80

Genuastrasse 14  
4142 Münchenstein-Basel  
Tel. 061 331 88 55  
Fax 061 331 80 47

E-Mail: [moebel@moebel-transport-ag.com](mailto:moebel@moebel-transport-ag.com)  
<http://www.moebel-transport-ag.com>



**SKYFRAME<sup>®</sup>**

**& Design INC.**

**THE FINAL TOUCH...  
SKY IS THE LIMIT!!!**

**Soho  
96 Spring St.  
New York, NY 10012  
(212) 925-7856**

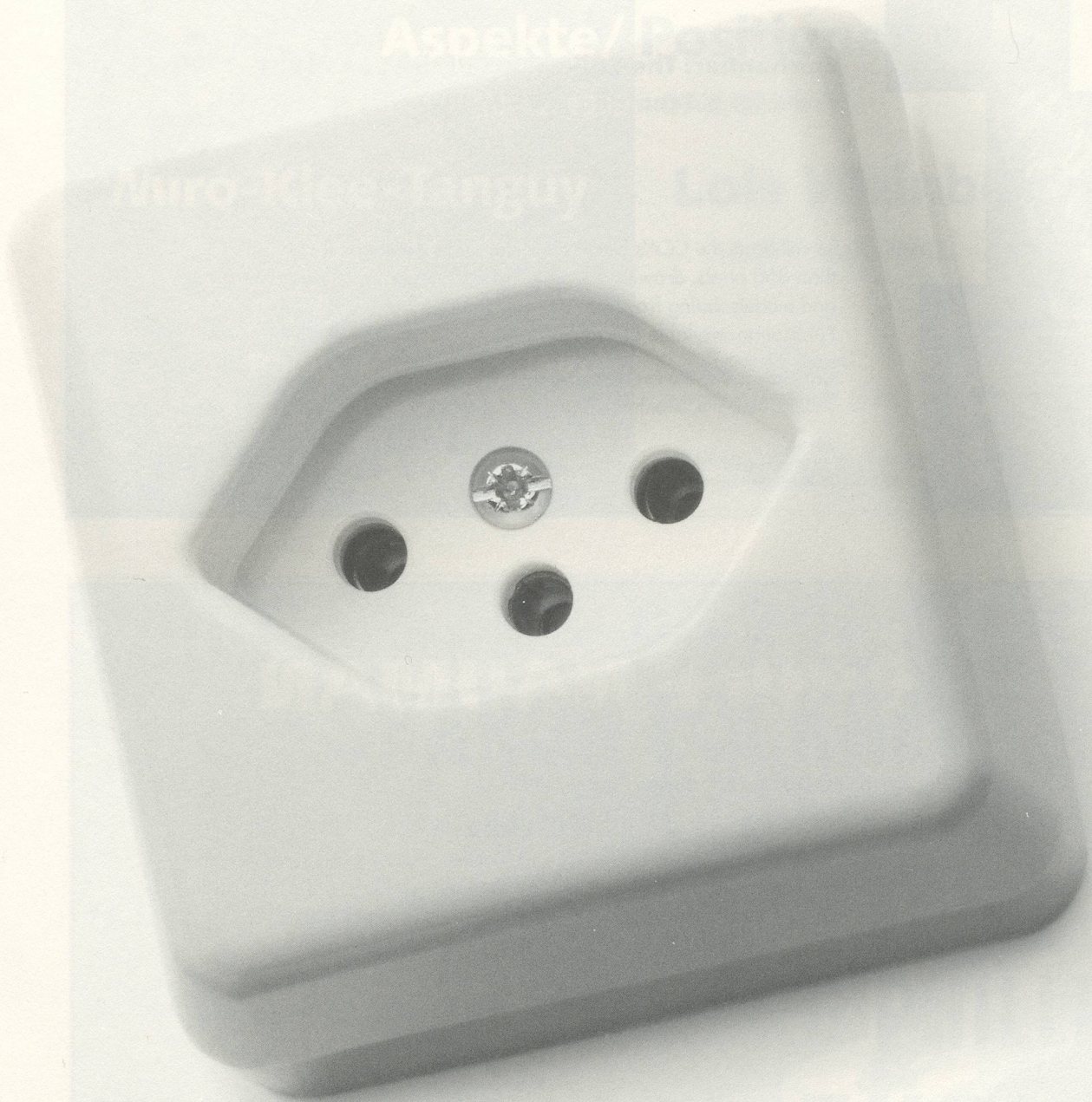
**Soho  
60 Mercer St.  
New York, NY 10013  
(212) 966-5393**

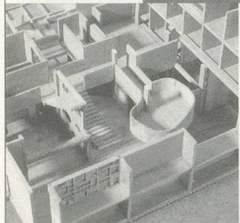
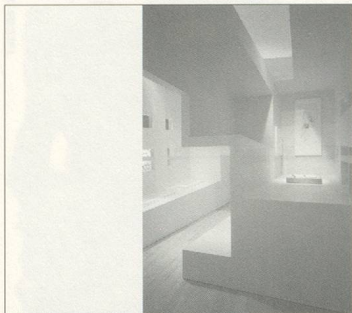
**Chelsea  
141 West 28th St.  
New York, NY 10001  
(212) 695-8525**



Zürichsee  
Druckereien AG

(METZGER LENNER BRIGOLIA)





# 10

## En chantier: The Collections of the CCA, 1989-1999 From 24 November 1999 to 30 April 2000



To celebrate the CCA's 10th anniversary, this exhibition features more than 350 prints, drawings, photographs, rare books, manuscripts, toys, and models dating from the 15th century to today. Publication available at the CCA Bookstore and by mail.

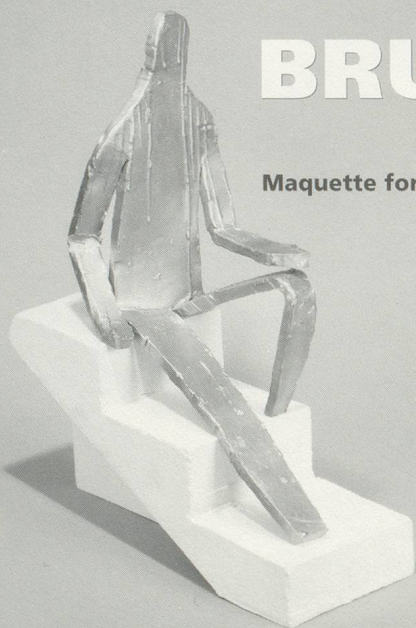
### Canadian Centre for Architecture

1920, rue Baile, Montréal, Québec, Canada. 514 939.7026 or [www.cca.qc.ca](http://www.cca.qc.ca)

Presented by



Photo: © CCA, Montréal. © FLC/SODRAC (Montréal).



# BRUCE NAUMAN

## Maquette for 5 Foot 8 Inch Figure, 1998

Cast Bronze and Plaster

19 x 5.75 x 14.5 inches, 48.3 x 14.6 x 36.8 cm

An Art Foundry Edition of 15

Represented by

**Konrad Fischer Gallery** Düsseldorf

**Sperone Westwater Gallery** New York

**Donald Young Gallery** Chicago

ART|FOUNDRY  
EDITIONS

505 471.7184 fax 505 471.6426 [artfoundry.net](http://artfoundry.net)

PO Box 8107 Santa Fe New Mexico 87504 USA

MUSEUM MODERNER KUNST STIFTUNG LUDWIG WIEN

MMK  
S L  
W

50 Jahre Kunst aus Mitteleuropa 1949-1999  
**Aspekte/Positionen**

18. 12. 1999 – 27. 2. 2000

**Miró-Klee-Tanguy**

18. 3. – 14. 5. 2000

**Palais Liechtenstein**

Fürstengasse 1 · 1090 Wien

Mehr Informationen über diese  
Ausstellungen finden Sie im Internet!

**Lois Weinberger**

10. 3. – 24. 4. 2000

**20er Haus**

Arsenalstraße 1 · 1030 Wien

Internet: <http://www.MMKSLW.or.at/MMKSLW/>  
E-mail: [museum@MMKSLW.or.at](mailto:museum@MMKSLW.or.at)

**2000**

15. Januar – 12. März

**PIERRE HUYGHE**

25. März – 21. Mai

**SHARON LOCKHART**

7. Juni – 13. August

**SARAH MORRIS**

26. August – 22. Oktober

**MANFRED PERNICE**

4. November – 31. Dezember

**RICHARD PHILLIPS**

**KUNSTHALLE ZÜRICH**

Limmatstrasse 270 CH-8005 Zürich Tel (01) 272 15 15 Fax (01) 272 18 88 e-mail: [kunsthallezh@access.ch](mailto:kunsthallezh@access.ch)

GÜLTIG 8 MONATE

**CHRIS**

**REINECKE**

**60ER JAHRE –**

**LIDL-ZEIT**

**13.11.1999 – 16.1.2000**

VON REINECKE

Kunstmuseum Düsseldorf

Ehrenhof 5 · 40479 Düsseldorf

Tel. +49 (0) 221. 8992 460

Fax +49 (0) 221. 89 29 173

**Öffnungszeiten:**

dienstags – sonntags 11–18 Uhr  
während der Chardin-Ausstellung  
freitags bis 21 Uhr, Heiligabend  
und Sylvester geschlossen,  
1. und 2. Weihnachtstag geöffnet

Begleitend zur Ausstellung  
erscheint im Verlag der  
Buchhandlung Walther König  
das Buch »Chris Reinecke,  
60er Jahre – Lidl-Zeit«, hrsg. von  
Barbara John, Susanne Rennert  
und Stephan von Wiese.

**Adam Fuss**

Less of a Test than Earth

20.11.1999 - 16.1.2000

**Daido Moriyama**

Stray Dog

29.1. - 26.3.2000

**Wendy Ewald**

8.4. - 4.6.2000

**FOTOMUSEUM**  
**WINTERTHUR**

Grüzenstrasse 44  
CH-8400 Winterthur  
Tel: 052/233 60 86  
[www.fotomuseum.ch](http://www.fotomuseum.ch)

Di – Fr 12 – 18 Uhr  
Sa/So 11 – 17 Uhr

29. Januar bis 26. März 2000

**Stefan Banz**

8. April bis 4. Juni 2000

**Mike Kelley**

17. Juni bis 13. August 2000

**Maurizio Cattelan**

migros museum, Limmatstrasse 270, CH-8005 Zürich, Tel. +41 1 277 20 50, Fax +41 1 277 62 86

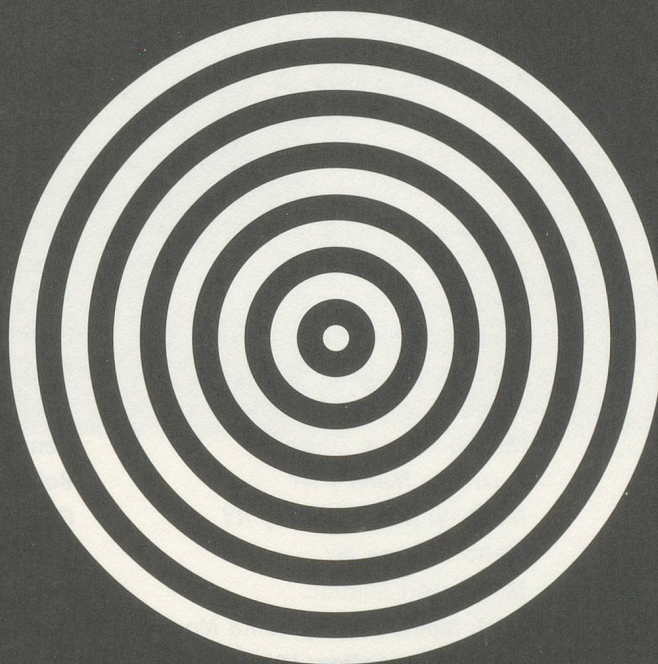
Opening hours are thuesday to friday 12 to 6 PM, saturday and sunday 11 to 5 PM  
visit us at [www.migrosmuseum.ch](http://www.migrosmuseum.ch)

# «migros museum»

## Museum für Gegenwartskunst Zürich

THE REAL THING

The Jan van Eyck Akademie is an international post graduate centre for fine art, design and theory. Each department develops its own programme directed towards the individual needs of participants. Critical research, joint seminars and workshops, and a programme of public events encourage the dialogue between the departments. Special reserach areas include Transcultural studies and Design and media.



### Jan van Eyck Akademie

Fine art  
Design  
Theory

If you are interested, please write, call, or e-mail for further information, an application form and our 2000 brochure to:

Academieplein 1, 6211 KM

Maastricht, Netherlands

telephone +31.43.350.3737

fax +31.43.350.3799

e-mail [info@janvaneyck.nl](mailto:info@janvaneyck.nl)



# The Armory Show 2000

The New North Pavilion  
11th Avenue & 39th Street New York City

Friday, February 25, 2000, 12-8PM  
Saturday, February 26, 2000, 12-8PM  
Sunday, February 27, 2000, 12-8PM  
Monday, February 28, 2000, 12-6PM

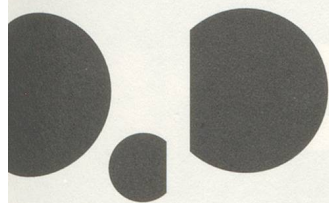
Opening Night Benefit for Dia Center for the Arts  
Thursday, February 24, 2000, 6.30-9.30PM

THE INTERNATIONAL FAIR OF NEW ART TEL 212-777-3338

ACME. Los Angeles  
Brooke Alexander NY  
Alexander and Bonin NY  
Mitchell Albus Gallery NY  
American Fine Arts, Co. NY  
Andréhn-Schiptjenko Stockholm  
Angles Gallery Santa Monica  
Art: Concept Paris  
Art & Public Geneva  
Galerie Daniel Blau Munich  
Peter Blum NY  
Blum & Poe Santa Monica  
Marianne Boesky Gallery NY  
Bonakdar Jancou Gallery NY  
Rena Bransten San Francisco  
Galeria Camargo Vilaça Sao Paulo  
Galerie Gisela Capitain Cologne  
Marta Cervera Gallery Madrid  
Cheim & Read NY  
Sadie Coles HQ London  
CRG Gallery NY  
D'Amelio Terras NY  
Deitch Projects NY  
Galerie Eigen + Art Berlin - Leipzig  
Thomas Erben Gallery NY  
Feature Inc. NY  
Feigen Contemporary NY  
Ronald Feldman Fine Arts NY  
Galerie Franck + Schulte Berlin  
Jessica Fredericks Gallery NY  
Stephen Friedman Gallery London  
Barbara Gladstone Gallery NY

Marian Goodman Gallery NY  
Gorney Bravin + Lee NY  
Greenberg Van Doren NY  
Galerie Hauser & Wirth Zurich  
Pat Hearn Gallery NY  
Galerie Max Hetzler Berlin  
Rhona Hoffman Gallery Chicago  
Jablonka Galerie Cologne  
Jay Jopling / White Cube London  
Casey Kaplan Gallery NY  
Georg Kargl Vienna  
Paul Kasmin Gallery NY  
Kerlin Gallery Dublin  
Anton Kern Gallery NY  
Nicole Klagsbrun Gallery NY  
Tomio Koyama Gallery Tokyo  
Galerie Krinzinger Vienna  
L.A. Galerie-Lothar Albrecht Frankfurt  
Lehmann Maupin NY  
Lisson Gallery London  
Lombard-Freid Fine Arts NY  
Luhring Augustine Gallery NY  
Sprüth / Magers Cologne / Munich  
Mai 36 Galerie Zurich  
Lawrence Markey NY  
Matthew Marks Gallery NY  
Metro Pictures NY  
Modern Art London  
Mark Moore Gallery Santa Monica  
Paul Morris Gallery NY  
Galerie Vera Munro Hamburg

Galerie Nächst St. Stephen Vienna  
Galerie Christian Nagel Cologne  
Neu Gallery Berlin  
Galerie Nathalie Obadia Paris  
Roslyn Oxley9 Gallery Sydney  
Patrick Painter Inc. Santa Monica  
Maureen Paley / Interim Art London  
Parkett Editions NY  
Galerie Emmanuel Perrotin Paris  
Friedrich Petzel Gallery NY  
Produzentengalerie Hamburg  
Galerie Almine Rech Paris  
Regen Projects Los Angeles  
Robert Sandelson London  
Julie Saul Gallery NY  
Scalo Zurich - NY  
Galerie Aurel Scheibler Cologne  
Schipper & Krome Berlin  
Brent Sikkema NY  
Holly Solomon Gallery NY  
Gian Enzo Sperone Rome  
Stefan Stux Gallery NY  
Leslie Tonkonow NY  
Henry Urbach Architecture NY  
Bob Van Orsouw Gallery Zurich  
Galleri Nicolai Wallner Copenhagen  
Gitte Weise Gallery Sydney  
Donald Young Gallery Chicago  
Zeno X Gallery Antwerp  
David Zwirner NY  
303 Gallery NY



# 1 | Basel

**PALAZZO DELLE PAPERSE**

Centro Arte Contemporanea

18.12.1999 » 05.03.2000 h. 12.00 » 19.00

## COLLEZIONISMI

the Collection of the  
Fondation Cartier pour l'art contemporain

BILL VIOLA  
 VIRXILIO VIETEZ  
 WOLFGANG TILLMANS  
 HIROSHI SUGIMOTO  
 ALAIN SECHAS  
 THOMAS RUFF  
 MARKUS RAETZ  
 BERNARD PIFFARETTI  
 VIK MUNIZ  
 MARIO MERZ  
 WOLFGANG LAIB  
 UDOMSAK KRISANAMIS  
 BODYS ISEK KINGELEZ  
 SHIRLEY JAFFE  
 SIMON HANTAI  
 DAVID HAMMONS  
 PETER HALLEY  
 RAYMOND HANS  
 NAN GOLDIN  
 SAM FRANCIS  
 HUBERT DUPRAT  
 THOMAS DEMAND  
 MARC COUTURIER  
 JAMES LEE BYARS  
 CHRISTIAN BOLTANSKI  
 BEAURIN DOMERQ  
 MATTHEW BARNEY

CONTRAPPUNTI

# BURRI BACON BEUYS



**Siena**  
arte  
contemporanea  
progetti opere eventi



**CREDIT SUISSE** | FIRST BOSTON

via di Città, 126 53100 Siena Italy office: phone/fax ++39 0577.42093 press office: phone/fax ++39 0577.226121 e-mail: papesse@comune.siena.it



## THOMAS HIRSCHHORN

Over the last five years, Swiss artist Thomas Hirschhorn has developed one of the most idiosyncratic and original sculptural vocabularies of his generation, establishing him as a major international artist. Hirschhorn forms his sculptures from the detritus of urban life, ranging from scraps of wood, tape, and plastic, to aluminum foil. The results are seemingly casual, chaotic, obsessive, and excessive environments informed by the artist's unique sense of materials, wry wit, and profound commitment to issues of social justice.

Presenting his most recent piece, "World Airport," as well as an entirely new installation, this book features essays by curators Okwui Enwezor, James Rondeau, and Hamza Walker, that explore the conception and construction of these works and situate them in the artist's oeuvre and beyond. The Art Institute of Chicago and the Renaissance Society, Chicago, are cooperating in presenting this catalogue and museum exhibition, Hirschhorn's first in the United States.

Published by The Art Institute of  
Chicago and The Renaissance Society  
ISBN 0-86559-181-4  
US \$19.95

### To order and for a free catalogue

**North and South America**  
D.A.P.

800 338 2665 tel  
212 627 9484 fax

### Europe

**IDEA Books**  
+31 20 6226154 tel  
+31 20 6209299 fax

d.a.p.  
distributed art publishers

# Art | 31 | Basel | 21-26 | 6 | 2000

## The Art Fair

Art 31 Basel, P.O. Box, CH-4021 Basel  
Tel. +41 61 686 20 20, Fax +41 61 686 26 86, E-Mail: [Art@messebasel.ch](mailto:Art@messebasel.ch), [www.Art.ch](http://www.Art.ch)

Messe Basel.

sponsored by  UBS

1 . - 9 . A P R I L 2 0 0 0



Internationale Messe  
für Editionen, Art Brut  
Kunst nach 1960

weitere Informationen:

**KölnMesse** GmbH

Postfach 210760, D-50532 Köln

tel. (0)221/821-32 15, fax (0)221/821-37 34

[www.koelnmesse.de](http://www.koelnmesse.de)

 **KölnMesse**

**Die Messe zum Thema Kunst Moderne Kunst von den 60er Jahren bis heute – Halle 1.2, New Attitudes: Junge Galerien und Kunst der 90er Jahre, ArtKino, Multiple District, Künstlerbücher – Halle 1.1. Messegelände Eingang City, täglich 11 – 19 Uhr, Eintritt inkl. Katalog: Tageskarte 25 DM, Abendkarte 12 DM, Infoline 069-75 75 66 64, Internet [www.artfrankfurt.de](http://www.artfrankfurt.de), Messe Frankfurt GmbH, Ludwig-Erhard-Anlage 1, 60327 Frankfurt am Main** *The fair that keeps to the subject of art Modern art from the Sixties until today – hall 1.2, New Attitudes: young galleries and art of the Nineties, ArtCinema, Multiple District, Artist's Books – hall 1.1. Fairgrounds City entrance, daily 11 a.m. to 7 p.m., Tickets incl. catalogue: daily ticket 25 DM, evening ticket 12 DM, Infoline +49-(0)69-75 75 66 64, Internet [www.artfrankfurt.de](http://www.artfrankfurt.de), Messe Frankfurt GmbH, Ludwig-Erhard-Anlage 1, 60327 Frankfurt am Main*

artfrankfurt



24.-27. März 2000

# SCALO

Zürich – Berlin – New York

International Publishing Project for Photography, Art and Popular Culture  
Internationaler Projektverlag für Fotografie, Kunst und Alltagskultur

Fax to: Nan Goldin

from: Walter Keller

**Verlagssitz / Head Office**

SCALO VERLAG AG  
Weinbergstrasse 22a  
CH-8001 Zürich  
Tel. 01 / 261 09 10  
Fax 01 / 261 92 62  
publishers@scalo.com

**Re: Your exhibition in Zurich**  
Zurich, December 18, 1999

Dear Nan

Welcome to Zurich!  
We here at Scalo are all very much looking forward to your exhibition

**Nan Goldin**  
**NEW WORKS**  
**January – March 2000**

at our Zurich gallery space. It was great fun to do the selection with you in New York. There is no one who can paint with colors in photography like you do.

And let me tell you how proud I am to be the publisher of your books for almost a decade now. Let's start working on a new book as soon as possible!

Love  
*Walter*  
Walter

**Vertrieb von/  
Distributor for**

PARKETT (Deutschland,  
Österreich, Schweiz)  
EDITION PATRICK FREY  
ANDREAS ZÜST VERLAG  
(Alle Territorien /  
All Territories)

**SCALO USA**

560 Broadway, # 301  
New York, NY 10012  
Tel. 212-334-9393  
Fax 212-334-4290  
publishers@scalo.com

**Buchhandlung & Galerie/  
Bookshop & Gallery**

Weinbergstrasse 22a  
CH-8001 Zürich  
Fax 01 / 261 92 62  
Buchhandlung / Bookshop  
Tel. 01 / 261 09 28  
Galerie / Gallery  
Tel. 01 / 261 09 41  
Di – Fr 12 – 18.30 Uhr  
Sa 10 – 16 Uhr

**SCALO**  
books & looks  
BUCHHANDLUNG & GALERIE

**Kunst auf der  
52. Frankfurter  
Buchmesse  
18.-23. Oktober  
2000**

# KUNST

- **Grafik & Fotografie**
- **Buchkunst  
Künstlerbücher  
Handpressen**
- **Museen  
Kunsthochschulen**
- **Kunstabücher  
Kunstzeitschriften**
- **Poster  
Kunstpostkarten  
Kalender**

Frankfurter Buchmesse  
Postfach 10 0116  
D-60001 Frankfurt am Main  
Tel.: +49-(0)69-2102-0  
Fax: +49-(0)69-2102-227/277  
e-mail: weber@book-fair.com  
Internet: www.buchmesse.de

**Gastland Polen**



©POLAND



# material

Die neue Kunst-Illustrierte

## 483g material\* enthalten

Perfect Day	69,2g
Bubblehouse	48,5g
Amsterdam, Köln, Berlin, Zürich	43,8g
Kopfball	41,6g
Lounging	39,9g
The Nuyorican Poets	37,1g
Tjoss May	34,2g
Nintendo	29,6g
viele Bilder von Carlos Amorales und Elke Krystufek sowie weitere Inhaltstoffe	139,1g

\* Nr. 2 jetzt erhältlich

herausgegeben von

«migros museum»  
Museum für Gegenwartskunst Zürich

material ist käuflich

1 Ausgabe kostet am Kiosk  
CHF/DM 14.-, ÖS 125.-

Abo 4 mal pro Jahr ins Haus geliefert  
CHF/DM 50.-, ÖS 435.-

Bestellungen

per Telefon: +41 1 405 60 70  
per Fax: +41 1 405 60 71  
per E-Mail: info@material.ch

# Art On Paper



Vol. 4, No. 2  
Nov.-Dec. 1999  
US \$10/Can \$12

---

## Prints

---

Ed Ruscha  
Henri Michaux  
David Hockney  
Linda Schwarz

The International Art Magazine Dedicated to Prints, Drawings, and Photography

For Subscriptions & Information call: (212) 988-5959 or (800) 685-9777 • Fax (212) 988-6107

---

# Gustav Kluge Eisenblicke

Eisenskulpturen

1985-1999

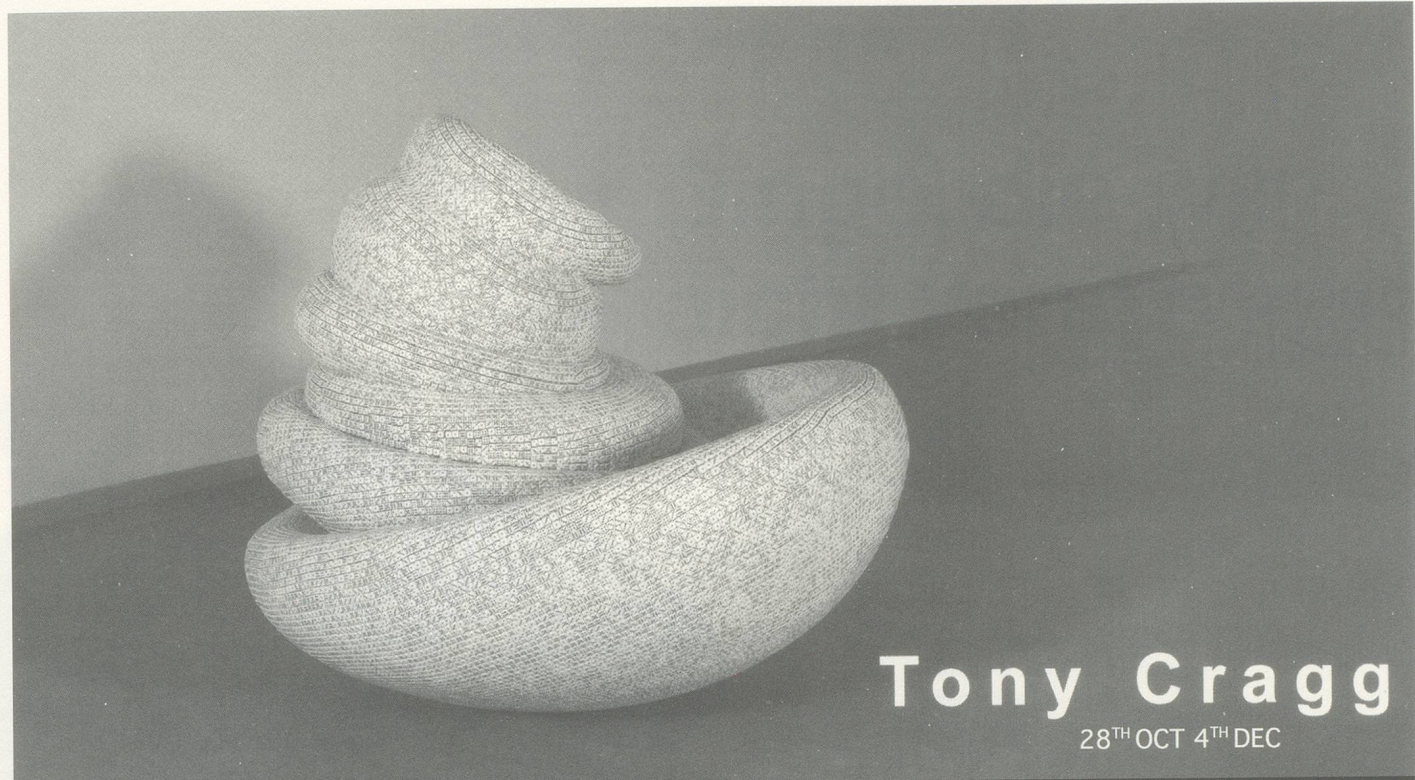
6.11.1999-14.1.2000



20 21

Galerie Edition Kunsthandel GmbH

Meisenburgstraße 169-173  
D-45133 Essen  
Tel. +49 (201) 87100-0  
Fax +49 (201) 87100-10  
Email [INFO@2021ART.COM](mailto:INFO@2021ART.COM)  
<http://www.2021ART.COM>  
Mi-Fr 14-19 · Sa 11-16  
und nach Vereinbarung:  
Sprechen Sie mit Irmgard Schnell.



# Tony Cragg

28<sup>TH</sup> OCT 4<sup>TH</sup> DEC

**GALERIA ANDRE VIANA** Rua Miguel Bombarda 410<sup>A</sup> — 4050-379 Porto — Portugal — tel.: +351 2 339 5090 fax.: +351 2 339 5099



**KIDing**<sup>®</sup>  
PLASTICing©99

presents  
**I LOVE STEREOART** project  
18<sup>TH</sup> DEC 8<sup>TH</sup> JAN

# Gustav Kluge Eisenblicke

**Kunsthalle  
Basel**

**Claudio Moser  
Markéta Othová  
29. Januar - 26. März 2000**

**Rot-Grau  
29. Januar - 30. April 2000**

Kunsthalle Basel, Steinenberg 7, CH-4051 Basel, Telefon 061/206 99 00, Fax 061/206 99 19, <http://www.kunsthallebasel.ch>  
Öffnungszeiten: Dienstag - Sonntag 11 - 17 Uhr, Mittwoch 11 - 20.30 Uhr, Montag geschlossen. Führungen: Mittwoch 18.30 Uhr, Sonntag 11 Uhr

28. Januar – 9. April 2000

# Dinge, die wir nicht verstehen

Eleanor Antin, Ines Doujak,  
Harun Farocki, Peter Friedl,  
Iñigo Manglano-Ovalle,  
Nina Menkes, Alice Ohneland,  
Alejandra Riera

Gastkuratiert von Ruth Noack  
und Roger M. Buergerl

Publikation erhältlich



Generali Foundation  
Wiedner Hauptstraße 15  
1040 Wien, Austria

Tel. (+43 1) 504 98 80  
Fax (+43 1) 504 98 83  
found.office@generali.at

[www.gfound.or.at](http://www.gfound.or.at)



# SEAN KELLY GALLERY

43 MERCER STREET  
NEW YORK NY 10013  
TELEPHONE 212 343-2405  
FAX 212 343-2604  
[www.skny.com](http://www.skny.com)

## Julião Sarmiento

December 9, 1999 - January 22, 2000

## Duchamp/Man Ray

January 22 - March 4

## Christine Borland

March 9 - April 15

## Ann Hamilton

April 20 - May 27

# THOMAS AMMANN FINE ART AG ZÜRICH



IMPRESSIONIST & 20TH CENTURY MASTERS

SELECTED WORKS BY MAJOR ARTISTS

BACON  
BALTHUS  
BEUYS  
BRAQUE  
CALDER  
CHAGALL  
ERNST  
GIACOMETTI  
KANDINSKY  
KIRCHNER  
KLEE  
DE KOONING  
LEGER  
LICHTENSTEIN  
MARDEN  
MATISSE  
MIRO  
PICASSO  
RYMAN  
ROTHKO  
TAAFFE  
TWOMBLY  
WARHOL

RESELBERGSTRASSE 97 CH-8044 ZÜRICH TEL. (411) 360 51 60 FAX (411) 360 51 61

[www.ammann-fineart.ch](http://www.ammann-fineart.ch)

**georg baselitz**  
**nicola de maria**  
**pia federspiel**  
**karl gerstner**  
**rebecca horn**  
**jahanguir**  
**catherine lee**  
**alois lichtsteiner**  
**ingeborg lüscher**  
**darryl pottorf**  
**robert rauschenberg**  
**sean scully**  
**richard serra**  
**joel shapiro**  
**frank stella**

*25 jahre galerie jamileh weber*

through january 29, 2000

**galerie jamileh weber**

waldmannstrasse 6

ch-8001 zürich

telefon 01 252 10 66

telefax 01 252 11 32

email: [jamilehweber@access.ch](mailto:jamilehweber@access.ch)

richard tuttle

sperone  
westwater

new work

5jan-12feb 2000

142 greene st  
ny ny 10012  
212 431 3685  
catalogue avail

*Parkett 58* ◊ *Sylvie Fleury* ◊ *Jasc*

*on Rhoades*  $\diamond$  *James Rosenquist*

