

Zeitschrift: Pamphlet
Herausgeber: Professur für Landschaftsarchitektur, Christophe Girot, ETH Zürich
Band: - (2022)
Heft: 25: Transitional space : six Japanese houses traversed

Endseiten

Nutzungsbedingungen

Die ETH-Bibliothek ist die Anbieterin der digitalisierten Zeitschriften auf E-Periodica. Sie besitzt keine Urheberrechte an den Zeitschriften und ist nicht verantwortlich für deren Inhalte. Die Rechte liegen in der Regel bei den Herausgebern beziehungsweise den externen Rechteinhabern. Das Veröffentlichen von Bildern in Print- und Online-Publikationen sowie auf Social Media-Kanälen oder Webseiten ist nur mit vorheriger Genehmigung der Rechteinhaber erlaubt. [Mehr erfahren](#)

Conditions d'utilisation

L'ETH Library est le fournisseur des revues numérisées. Elle ne détient aucun droit d'auteur sur les revues et n'est pas responsable de leur contenu. En règle générale, les droits sont détenus par les éditeurs ou les détenteurs de droits externes. La reproduction d'images dans des publications imprimées ou en ligne ainsi que sur des canaux de médias sociaux ou des sites web n'est autorisée qu'avec l'accord préalable des détenteurs des droits. [En savoir plus](#)

Terms of use

The ETH Library is the provider of the digitised journals. It does not own any copyrights to the journals and is not responsible for their content. The rights usually lie with the publishers or the external rights holders. Publishing images in print and online publications, as well as on social media channels or websites, is only permitted with the prior consent of the rights holders. [Find out more](#)

Download PDF: 21.08.2025

ETH-Bibliothek Zürich, E-Periodica, <https://www.e-periodica.ch>

About the contributors

Christophe Girot is professor at the Chair of landscape architecture at the Department of Architecture at ETH Zurich. His research focuses on topological methods of landscape architecture, new media for the analysis and perception of landscape, and the history and theory of landscape architecture. He holds a practice in Zurich with projects in Europe and in Asia.

Dennis Häusler is an architect and research associate in the MediaLab at the ETH Zurich. His research examines landscape and urban environments through various visual media, focusing on laser scanning and point cloud modeling. In parallel to his academic work, he applies techniques to architecture and visualization practice.

Momoyo Kaijima founded Atelier Bow-Wow with Yoshiharu Tsukamoto in 1992. She has taught at the School of Art and Design at the University of Tsukuba since 2000. Since 2017 she has held the Chair of Architectural Behaviorology at ETH Zurich.

Takanori Kagawa received his master's degree in architecture from Tokyo Institute of Technology in 2000. From 2000 to 2006, he worked at Sakakura Associates. In 2006 he established SPACESPACE in Osaka.

Shujiro Kanamori has been the owner of Nihonbashi House since 1994, and since 2016 he has been the owner of the Gallery Nihonbashi House.

Hiroyuki Kimura studied architecture at the University of Tokyo and EPFL, Switzerland. He worked at Diener & Diener Architects in Basel from 1999 to 2017. Since 2017 he has been the director of MachiMuraStudio in Tokyo. Since 2019 he has been a project professor of KYOTO Design Lab at Kyoto Institute of Technology.

Masahiro Kinoshita completed his master's degree in architecture at Kyoto Institute of Technology in 2003. In 2007 he established KINO architects and is currently an associate professor at Kyoto Institute of Technology.

Junko Kishigami received her master's degree in architecture from Kobe University in 2006. From 2006 to 2010 she worked at Sakakura Associates. Since 2010 she has worked at SPACESPACE in Osaka.

Christian Kerez received his master's degree in architecture from ETH Zurich in 1988. After publishing extensive architectural photography, he opened his own architectural office in 1993. He has been a

visiting professor at ETH Zurich since 2001 and was appointed full professor with a chair in architecture and design in 2009.

Hideyuki Nakayama received his master's degree in architecture from the Tokyo University of the Arts in 2000. From 2000 to 2007, he worked at Toyo Ito & Associates. In 2007 he established Hideyuki Nakayama Architecture.

Cathelijne Nuijsink is a Marie Skłodowska-Curie Fellow at the Institute for the History and Theory of Architecture (gta) at ETH Zurich. Her doctoral thesis, "What Is a House? Architects Redesigning the Domestic Sphere in Contemporary Japan, 1995–2011," investigated the recent history of the single-family house in Japan.

Keisuke Oka received a degree in architecture from the National Institute of Technology, Ariake College, in 1986. Since 1988, he has been a member of Takayama Architecture Seminar School. In 2005 he started building the Arimaston Building in Tokyo, which is still under construction.

Eizo Okada completed his doctoral studies at Chiba University. He has directed design and architecture projects and has received awards such as the Best of the Best Award in the exhibition design category of the Red Dot Award (Germany), the D&AD Award (UK), and the Good Design Award (Japan). He became a professor at Kyoto Institute of Technology in 2017 and the director of KYOTO Design lab in 2018.

Luisa Overath is a Zurich-based architect. Since 2020 she has been a research associate at the Chair of Landscape Architecture of Christophe Girot, where she teaches in the design studio of the ETH Zurich Department of Architecture. Both in theory and practice her research examines the relationship between public interior and exterior spaces.

Gabrielle Schaad is a postdoctoral researcher at the Chair of Theory and History of Architecture, Art, and Design at TU Munich and a research associate at the Department of Fine Arts, Zurich University of the Arts (ZHdK). She worked at Sophia University, Tokyo, and holds a PhD from ETH Zurich.

Laurent Stalder is full professor at the Institute for the History and Theory of Architecture (gta) at ETH Zurich since 2018. In the fall semester of 2019, he was a guest professor for architectural behaviorology at the Department of Architecture and Building Engineering, School of Environment and Society at Tokyo Institute of Technology.

Kentaro Takeguchi studied architecture at Architectural Association School of Architecture

and Kyoto University, where he received his master's degree in 1998. In the same year, he established Alphaville Architects. Currently, he is a visiting professor at Kobe University.

Yoshiharu Tsukamoto is co-founder of Atelier Bow-Wow and professor at Tokyo Institute of Technology. He applies the theory of behaviorology based on the commons to architectural works, public space, urban research, and publications.

Myriam Uzor is an architect engaged in the interdisciplinary fields of construction, the performing arts, and the choreographic aspects of architecture and landscape design. Since 2018 she has been conducting research and teaching at the ETH Zurich Chair of Landscape Architecture of Professor Christophe Girod.

Inge Vinck has taught at various universities. She was a guest professor at TU Delft and professor at Accademia di Architettura di Mendrisio. She is co-founder of *architecten de vylder vinck taillieu* and more recently *architecten jan de vylder inge vinck*. Together with Jo Taillieu and Jan De Vylder, she hosted the exhibition ADVVT: variete/architecture/desire at TOTO GALLERY-MA, Tokyo, in 2019.

Erwin Viray is a professor, former dean of architecture and sustainable design, and currently Chief Sustainability Officer at SUTD (Singapore University of Technology and Design). Erwin has great interest in collaborations and conversations that open the possibility of a more sustainable world.

Matthias Vollmer is an architect and research associate in the MediaLab at ETH Zurich. After completing his degree in film studies at the Zurich University of the Arts (ZHdK), he pursued a bachelor's and master's degree in architecture at ETH. His research examines the relationship between architecture and landscape through visual media, including laser scan technology, film, and analog photography.

Jan De Vylder is a Flemish architect based in Ghent and Brussels. He has worked under his name since 2000. He recently founded *architecten jan de vylder inge vinck* with Inge Vinck. De Vylder has taught at Sint-Lucas School of Architecture in Ghent and Brussels, TU Delft, EPFL and Accademia di Architettura di Mendrisio. Since 2017 he has taught as an associate professor at ETH Zurich.

Asako Yamamoto studied architecture at ENSA Paris La Villette and Kyoto University, where she received her master's degree in 1997. She is an associate professor at Osaka Institute of Technology.

Acknowledgments

This publication results from an ongoing collaboration with colleagues and friends from near and far.

Our special thanks go to Christophe Girod, the initiator of this project. This publication would not have been possible without his excellent intuition, precious inputs, and trust.

We want to thank our loyal colleagues at KIT, who played an enormously valuable and central role in the entire process, from the study trip through the symposium to supporting us with this publication. In particular, and with great gratitude, we would like to thank Yoshiro Ono, Eizo Okada, Masahiro Kinoshita, and Hiroyuki Kimura. Many thanks also to the students of KIT and ETH Zurich for their energy and ongoing thirst for adventures. A special thanks goes finally to Erwin Viray from SUTD for all the conversations we had, and for his commitment to and skillfulness in building bridges in architectural education.

Naturally, we would like to thank all our guests for their participation in the symposium and for personally engaging in the debate, enabling a mindful, critical, and wide-ranging discussion: Momoyo Kaijima, Takanori Kagawa, Shujiro Kanamori, Hiroyuki Kimura, Masahiro Kinoshita, Junko Kishigami, Christian Kerez, Hideyuki Nakayama, Cathelijne Nuijsink, Keisuke Oka, Eizo Okada, Yoshiro Ono, Gabrielle Schaad, Laurent Stalder, Kentaro Takeguchi, Yoshiharu Tsukamoto, Inge Vinck, Erwin Viray, Jan De Vylder, Asako Yamamoto. Thanks to ETH student Noah Pasqualini for his participation in the symposium.

Furthermore, we owe thanks to all colleagues involved in the editing process of this publication: Lisa Neuenschwander, who took on the challenge of transcribing; Gereon Siévi, who supported us with editing the videos; and Ella Eßlinger, a great help in the text editing.

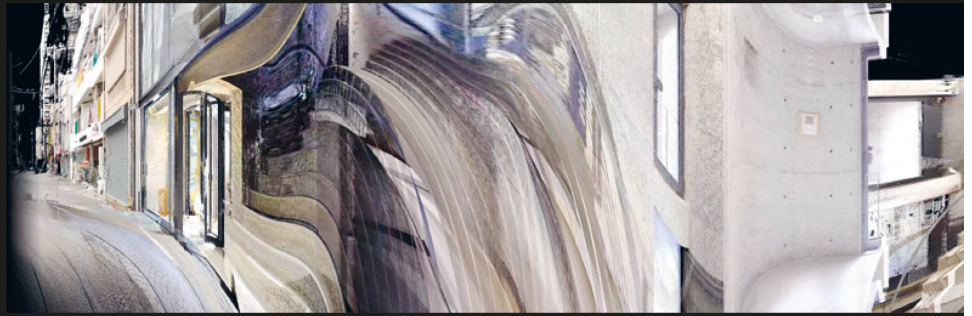
Many thanks to Philip Shelley, Jennifer Bartmess, and Jeremy Waterfield for their accurate copyediting and proofreading and to Naoko Minami for translating the English texts into Japanese. Finally, our sincere thanks to graphic designer Hitomi Murai. Her talent and adaptability allowed a smooth transition between different languages and cultures.

DH, LO, MU, MV

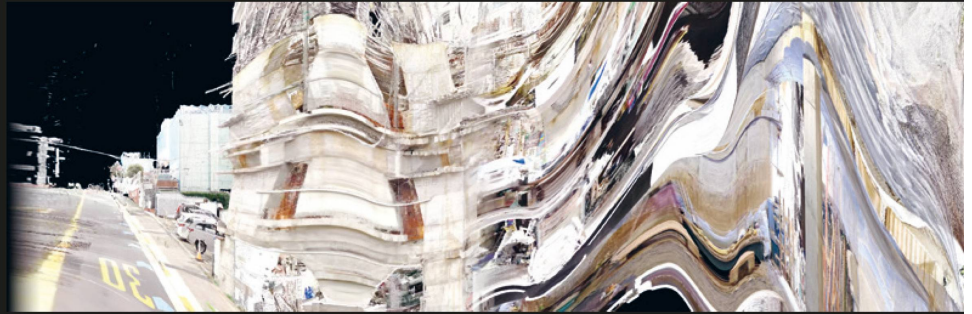
Video Sequences

0" 10" 20" 30" 40" 50"

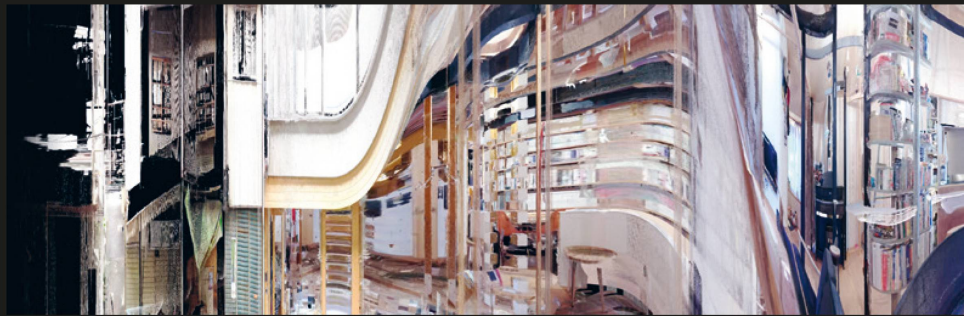
Nihonbashi House



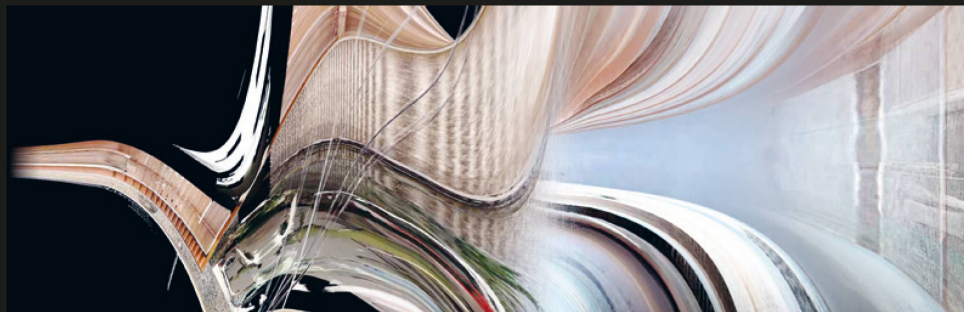
Arimaston Building



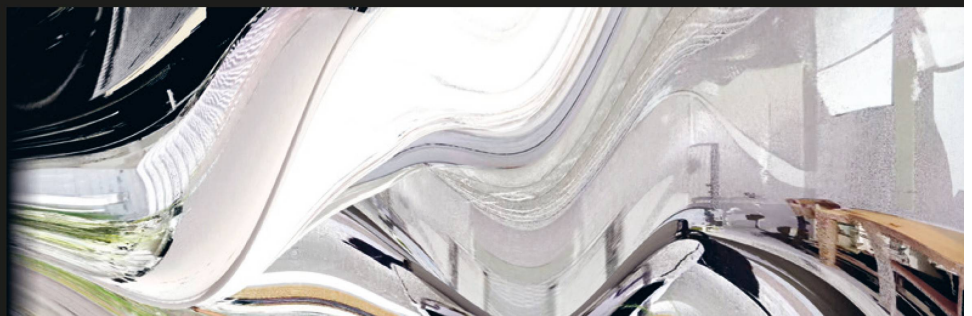
Spacespace House



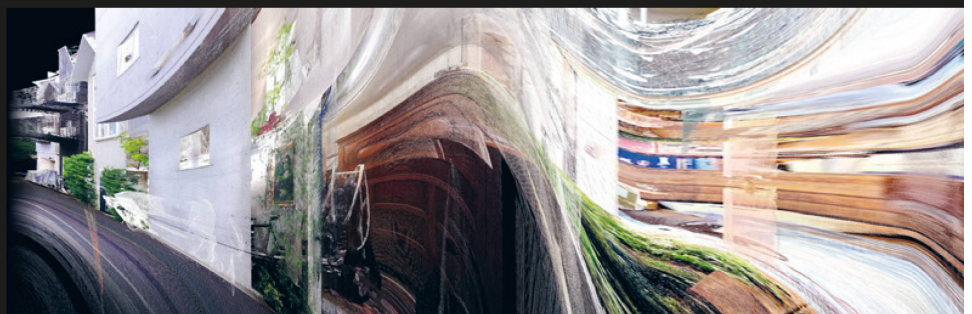
Garden Alley House



O-House



Split Machiya



60" 70" 80" 90" 100" 110" 120" 130"

