

Zeitschrift: Pamphlet
Herausgeber: Professur für Landschaftsarchitektur, Christophe Girot, ETH Zürich
Band: - (2008)
Heft: 11: Upper Rhine Delta : Master of Advanced Studies in Landscape Architecture 07/08

Artikel: Dynamic landscape : hydrogony
Autor: Gong, Hailiang / Antoniadi, Ioanna
DOI: <https://doi.org/10.5169/seals-965594>

Nutzungsbedingungen

Die ETH-Bibliothek ist die Anbieterin der digitalisierten Zeitschriften auf E-Periodica. Sie besitzt keine Urheberrechte an den Zeitschriften und ist nicht verantwortlich für deren Inhalte. Die Rechte liegen in der Regel bei den Herausgebern beziehungsweise den externen Rechteinhabern. Das Veröffentlichen von Bildern in Print- und Online-Publikationen sowie auf Social Media-Kanälen oder Webseiten ist nur mit vorheriger Genehmigung der Rechteinhaber erlaubt. [Mehr erfahren](#)

Conditions d'utilisation

L'ETH Library est le fournisseur des revues numérisées. Elle ne détient aucun droit d'auteur sur les revues et n'est pas responsable de leur contenu. En règle générale, les droits sont détenus par les éditeurs ou les détenteurs de droits externes. La reproduction d'images dans des publications imprimées ou en ligne ainsi que sur des canaux de médias sociaux ou des sites web n'est autorisée qu'avec l'accord préalable des détenteurs des droits. [En savoir plus](#)

Terms of use

The ETH Library is the provider of the digitised journals. It does not own any copyrights to the journals and is not responsible for their content. The rights usually lie with the publishers or the external rights holders. Publishing images in print and online publications, as well as on social media channels or websites, is only permitted with the prior consent of the rights holders. [Find out more](#)

Download PDF: 27.04.2026

ETH-Bibliothek Zürich, E-Periodica, <https://www.e-periodica.ch>

DYNAMIC LANDSCAPE | HYDROGONY

Hailiang Gong and Ioanna Antoniadi

Dynamic landscape

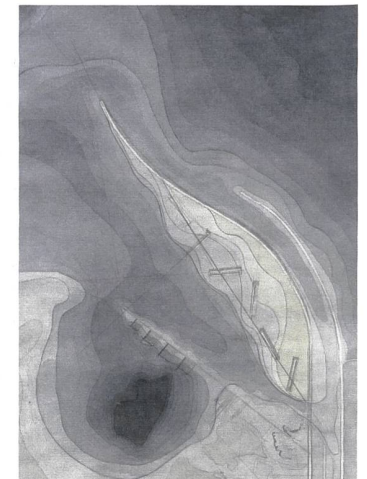
The design concept seeks to use the energy of site to create an entirely new landscape rather than resorting solely to engineered intervention. The design breaks the dike of the Old Rhine and the water is allowed to make new paths that naturally build up small structures from materials of the site and further slow and accumulate sedimentation. Two distinct zones are gradually formed: one acts as a central park working at the scale of the whole Rhine Delta while the other is dedicated to waterside urbanism, both of which take advantage of locational assets and meet increasing demands for housing and tourism infrastructure. The design highlights the varying water levels of the lake and river in order to reveal the dynamic of landscape through the language of ecology and the passing of time.

Hydrogony

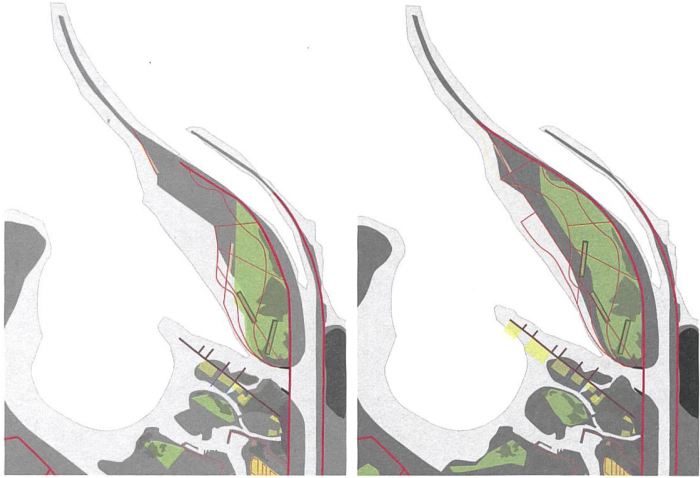
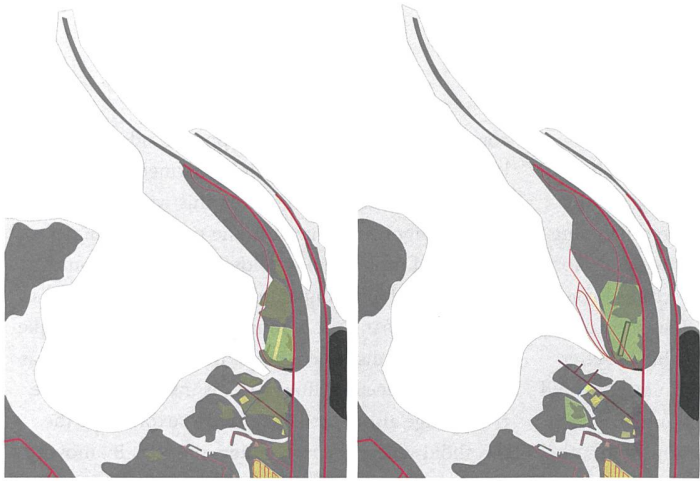
On a programmatic level, this project suggests a new route for the Rhine through the site. The western edge of the river is followed by a promenade starting from the existing Rhine and ending in a pier on the lake. The route's section changes along its length, allowing for different experiences of the water. The water's edge ultimately limits the urban growth of Hoechst by acting as an orientation tool for urban settlement while providing a clear connection to the lake. In the middle of this new path the river widens. Here, in the spatial but also gravitational center of the site, an island emerges. Walls are erected that act as sediment traps, continuing to collect the material that is washed down from the Alps. Planted with trees and an orchard on its raised center, the island can be explored via a footpath along its perimeter.



site plan showing both projects



plan of rhine correction
at the river's mouth



phasing diagrams

model of central island



perspectives of changing seasons

