

**Zeitschrift:** Mitteilungen aus Lebensmitteluntersuchungen und Hygiene = Travaux de chimie alimentaire et d'hygiène  
**Herausgeber:** Bundesamt für Gesundheit  
**Band:** 94 (2003)  
**Heft:** 3

**Artikel:** Distribution of the volatile (flavour) compounds in Raclette cheese produced with different staphylococci in the smear  
**Autor:** Place, Raymond B. / Imhof, Miroslava / Teuber, Michael  
**DOI:** <https://doi.org/10.5169/seals-981991>

### **Nutzungsbedingungen**

Die ETH-Bibliothek ist die Anbieterin der digitalisierten Zeitschriften auf E-Periodica. Sie besitzt keine Urheberrechte an den Zeitschriften und ist nicht verantwortlich für deren Inhalte. Die Rechte liegen in der Regel bei den Herausgebern beziehungsweise den externen Rechteinhabern. Das Veröffentlichen von Bildern in Print- und Online-Publikationen sowie auf Social Media-Kanälen oder Webseiten ist nur mit vorheriger Genehmigung der Rechteinhaber erlaubt. [Mehr erfahren](#)

### **Conditions d'utilisation**

L'ETH Library est le fournisseur des revues numérisées. Elle ne détient aucun droit d'auteur sur les revues et n'est pas responsable de leur contenu. En règle générale, les droits sont détenus par les éditeurs ou les détenteurs de droits externes. La reproduction d'images dans des publications imprimées ou en ligne ainsi que sur des canaux de médias sociaux ou des sites web n'est autorisée qu'avec l'accord préalable des détenteurs des droits. [En savoir plus](#)

### **Terms of use**

The ETH Library is the provider of the digitised journals. It does not own any copyrights to the journals and is not responsible for their content. The rights usually lie with the publishers or the external rights holders. Publishing images in print and online publications, as well as on social media channels or websites, is only permitted with the prior consent of the rights holders. [Find out more](#)

**Download PDF:** 13.01.2026

**ETH-Bibliothek Zürich, E-Periodica, <https://www.e-periodica.ch>**

# Distribution of the volatile (flavour) compounds in Raclette cheese produced with different staphylococci in the smear

Raymond B. Place<sup>1</sup>, Miroslava Imhof<sup>2</sup>, Michael Teuber<sup>1</sup> and Jacques Olivier Bosset<sup>2</sup>

<sup>1</sup>Laboratory of Food Microbiology, Swiss Federal Institute of Technology (ETHZ), Zurich, Switzerland

<sup>2</sup>Swiss Federal Dairy Research Institute (FAM), Liebefeld, Berne, Switzerland

Received 18 February 2003, accepted 8 April 2003

## Introduction

Smear coated cheese types such as Raclette, Gruyère AOC, L'Etivaz AOC, Tête de Moine AOC, Tilsiter, Appenzeller and Vacherin fribourgeois are submitted to a double ripening process: an inner ripening due to both, the lactic starters used for the manufacture as well as the native raw milk flora, and an outer ripening due to the microbial biofilm growing on the rind.

Previous studies have reported significant concentration gradients of volatile (flavour) compounds in Gruyère AOC cheese during ripening (1–4) but did not investigate the microbial activity of the smear in the different zones of the loaf. The enzymatic activities responsible for volatile aroma components of cheese are mainly derived from the three following major catabolic pathways: lactose, lipid and protein catabolism (5–7). The control of these metabolites is therefore necessary to guarantee consistent quality and satisfy consumer expectations. Therefore a better knowledge of the microbial growth on surface ripened cheese types (8, 9) is needed.

Stahnke (10) has shown the influence of different staphylococci on the flavour formation in sausages. *Staphylococcus* spp. are also dominant components of the biofilm of smear coated or smear ripened cheeses (11, 12). In order to better understand the complex development of flavour by staphylococci on cheese, the effect of *Staphylococcus succinus* subsp. *casei* and *Staphylococcus equorum* subsp. *linens* on the volatile products of Raclette cheese was investigated in this preliminary study.

## Experimental

### Sample material

Raclette cheeses were made from thermised milk and ripened over 5 months at 12°C and 96 % relative humidity. Cheeses were smeared with a starter culture containing *Debaryomyces hansenii*, *Geotrichum candidum*, *Arthrobacter nicotianae* and *Corynebacterium casei*. One batch was smeared with additional *Staphylococcus succinus* subsp. *casei* DSM 15096<sup>T</sup> (Raclette 1) and the other batch with *Staphylococcus equorum* subsp. *linens* DSM 15097<sup>T</sup> (Raclette 2) (table 1). Each investigated cheese block was cut into five parts corresponding to inner, outer, and discarded zones, whereof only the inner and outer zones were used for further analysis (fig. 1). The inner and outer zones of a quarter cheese block were pooled for analysis.

Table 1  
Composition of starter cultures

Raclette 1	Raclette 2
<i>Staphylococcus succinus</i> subsp. <i>casei</i> DSM 15096 <sup>T</sup>	<i>Staphylococcus equorum</i> subsp. <i>linens</i> DSM 15097 <sup>T</sup>
<i>Brevibacterium linens</i> SB108	<i>Brevibacterium linens</i> SB108
<i>Corynebacterium casei</i> SB67	<i>Corynebacterium casei</i> SB67
<i>Arthrobacter nicotianae</i> SB42	<i>Arthrobacter nicotianae</i> SB42
<i>Geotrichum candidum</i> GC15	<i>Geotrichum candidum</i> GC15
<i>Debaryomyces hansenii</i> GR3C9	<i>Debaryomyces hansenii</i> GR3C9

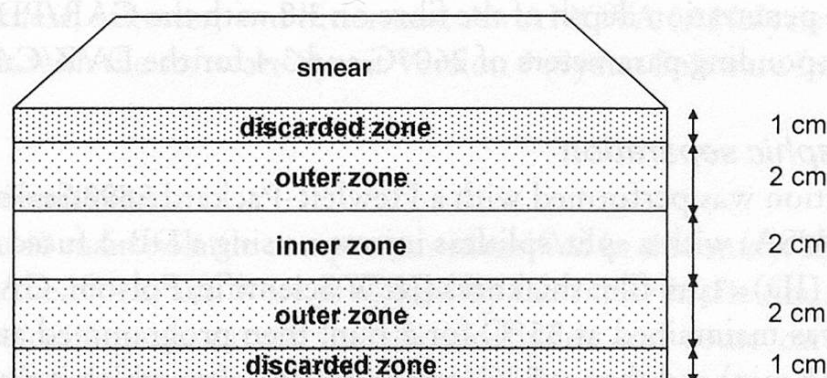


Figure 1 Zone fractioning of Raclette cheese samples.

### Sample preparation for physicochemical analysis

The Raclette cheese samples were stored deep frozen at -20°C packed in aluminium foil. Before their analysis, they were left for 10 h at approximately +6°C and manually grated using a domestic rasp. The analyses were carried out twice using two different preparation techniques. For the samples A (grated), 10±0.01 g grated cheese were weighed. For the samples B (dispersed), 5±0.01 g grated cheese



were finely dispersed with 7.5 g boiled Milli-Q-water using a POLYTRON PT 30000 (Kinematica, Littau/Luzern, Switzerland) directly in the glass vials. The samples prepared on both ways were left for 12 h at room temperature and conditioned for 60 min (equilibration time) at 45 °C in 22 ml clear glass vials closed with screw top polypropylene cap with a hole and PTFE/silicon septa (Supelco, art no 27212, Bellefonte, PA, USA).

The high concentrations of volatile fatty acids in cheese is often responsible for peak overlapping. Therefore the different sample preparation techniques A and B mentioned above were employed. The former (A) is generally more efficient (higher extraction rate) but also more sensitive to fatty acid interferences than the latter (B) (i.e. peak overlapping preventing precise peak integration).

### *SPME technique*

The Headspace Solid-Phase Microextraction (HS-SPME) was performed using two different types of fibres (Supelco, Bellefonte, PA, USA): StableFlex Fibre 85 µm Carboxen/Polydimethylsiloxane coating (CAR/ PDMS) and 50/30 µm Divinylbenzene/Carboxen on Polydimethylsiloxane (DVB/CAR/PDMS) on a 2 cm StableFlex fibre in order to analyse a greater number of volatile compounds. For both fibres a blank value was obtained.

The SPME fibres were introduced into the headspace of the vials containing the samples for 30 min at 45 °C (loading time). For loading the fibre, the penetration depth of the fibre was set on 2.0 (scale on the SPME halter) with the CAR/PDMS fibre, and on 1.6 with the DVB/CAR/PDMS. For the thermodesorption, the injector was switched for 5 min to splitless mode. The injector temperature was set at 280 °C and the penetration depth of the fibre on 3.8 with the CAR/PDMS fibre, and with the corresponding parameters of 260 °C and 3.4 for the DVB/CAR/PDMS.

### *Chromatographic separation*

The separation was performed with a Hewlett-Packard 5890 Series II – (Agilent Technologies, USA) with a split/splitless injector, using a DB-1 fused silica column, 60m×0.32mm (ID)×1µm film thickness (J&W Scientific, Folsom, CA, USA). Oven temperature was maintained at 35 °C for 5 min, then programmed at 10 °C/min to 45 °C (held for 5 min) and then at 5 °C/min to 250 °C, after which it was held for further 10 min at 250 °C. The carrier gas was helium set at 110 kPa at 45 °C. Injector temperature depended on the type of SPME fibre used (280 °C or 260 °C, see *SPME technique*). FID temperature was set at 300 °C and MS-Interface at 280 °C.

### *Detection*

Three detectors were used. Two were mounted simultaneously in parallel by splitting the flow at the end of the capillary column; one stream led to a flame ionisation detector (FID), the other to a mass-selective detector (MSD model HP 5971A) or a sniffing port for olfactometry. The MSD operated in the scan mode



(TIC) from 26 to 300 amu at 1.6 scan/s, ionisation was by EI at 70 eV by autotuning. The MSD was used for the identification of the volatile (flavour) compounds using the Wiley library (13). In addition the identity was confirmed by comparing the retention indices of authentic reference compounds. The FID signal was used for the semi-quantitative determination of the peak height. Only compounds with a FID peak height greater than the value of 50 arbitrary units (fixed threshold) have been considered for this study.

### Microbiological analysis

The surface microflora of the cheeses was analysed after 2, 3, 4, 6, 8 and 12 weeks. For this an area of 10 cm<sup>2</sup> of the smear film was scraped off with a sterile swap and scalpel, serially diluted in 20 g/l NaCl solution and plated on mSK (12), mMA (14), PY Agar (Becton Dickinson), and VRBD (Merck). The mSK, mMA and PY plates were incubated under aerobic conditions at 25 °C for 6 days and the VRBD under aerobic conditions at 37 °C for 24 hours. The isolates were identified on the basis of biochemical characteristics with the ID 32 STAPH (bioMérieux) and MicroLog (Biolog) systems including activities of catalase and oxidase (15). All counts are given per cm<sup>2</sup> smear surface.

### Sensory analysis

After five months of ripening, cheeses were subjected to sensory evaluation by a fifteen-member professional tasting panel familiar with Raclette cheese. The cheeses were tasted at room temperature under standard conditions. The panel graded on a scale from zero (weak) to four (strong) the smell when breaking as well as intensity of aroma, sourness, saltiness, and bitterness. An ANOVA (ANalysis Of VAriance) was carried out with the software Systat Version 9 (Systat Software Inc., Richmond, CA).

### Results and discussion

Among the 40 main volatile compounds identified in this study, 23 depended on the location in the block, and were produced by the smear in the rind. Indeed, most volatile substances found, except for the aldehydes and some carboxylic acids, occurred in higher amounts in the outer than in the inner zone, and also in higher amounts in cheese made with *Staphylococcus succinus* subsp. *casei* than in those made with *Staphylococcus equorum* subsp. *linens*. Tables 2 to 7 indicate the relative concentrations (FID arbitrary unit) of these compounds listed according to their functional groups within each zone as well as their ratios (outer/inner). Table 2 lists the hydrocarbons, table 3 the aldehydes, table 4 the ketones, table 5 the alcohols, table 6 the carboxylic acids, and table 7 the miscellaneous substances. Figure 2 shows typical FID chromatograms of the outer and inner zones of cheeses made with *S. succinus* subsp. *casei*, using the SMPE fibre CAR/ PDMS.

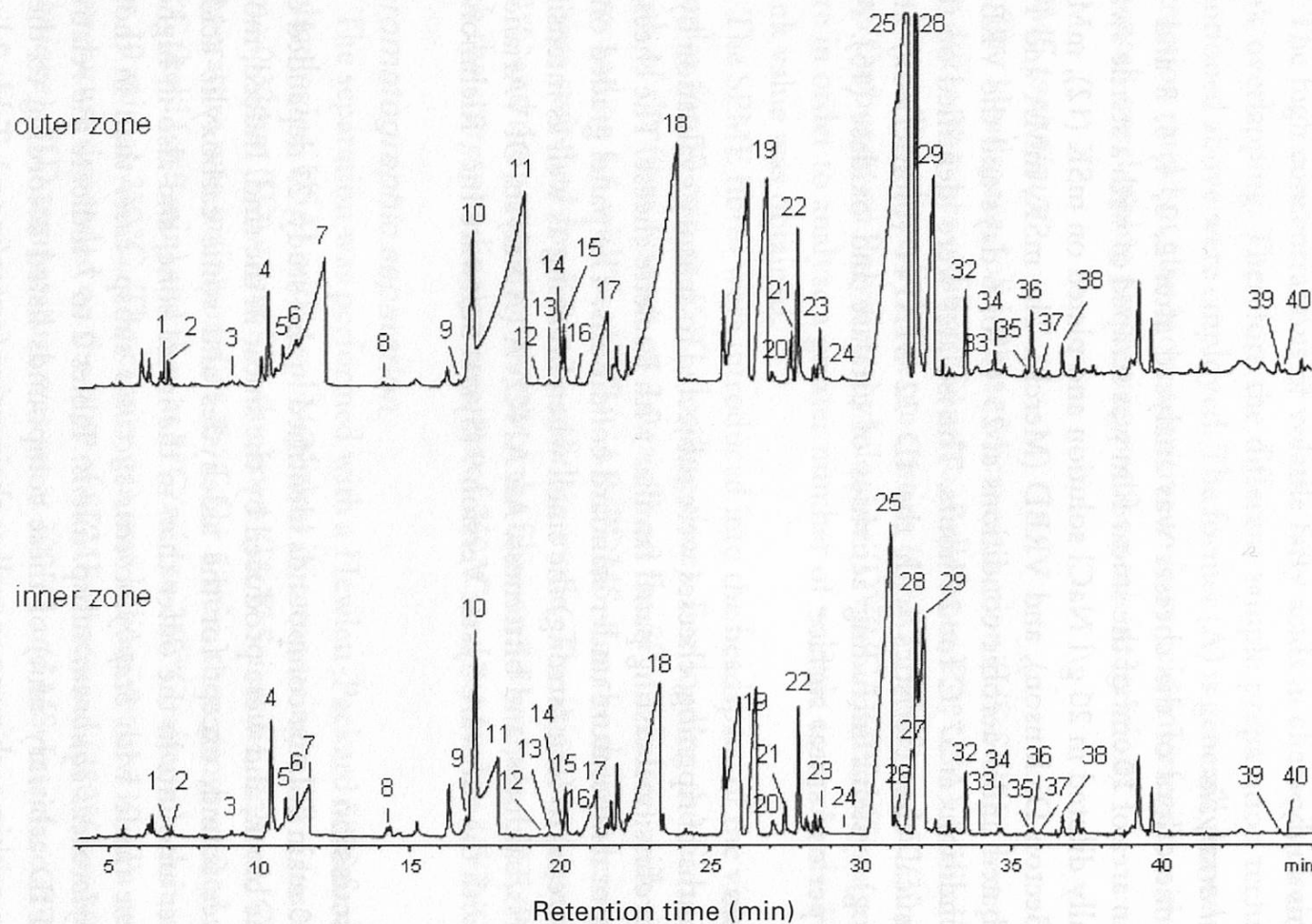


Figure 2 **Typical FID chromatograms of the outer and inner zone of grated (A) cheese using a DB-1 separation column with a CAR/PDMS fibre.** The cheese was made with *Staphylococcus succinus* subsp. *casei* (Raclette 1). The peak numbering in this figure corresponds to the peak numbering in table 2 to 7.

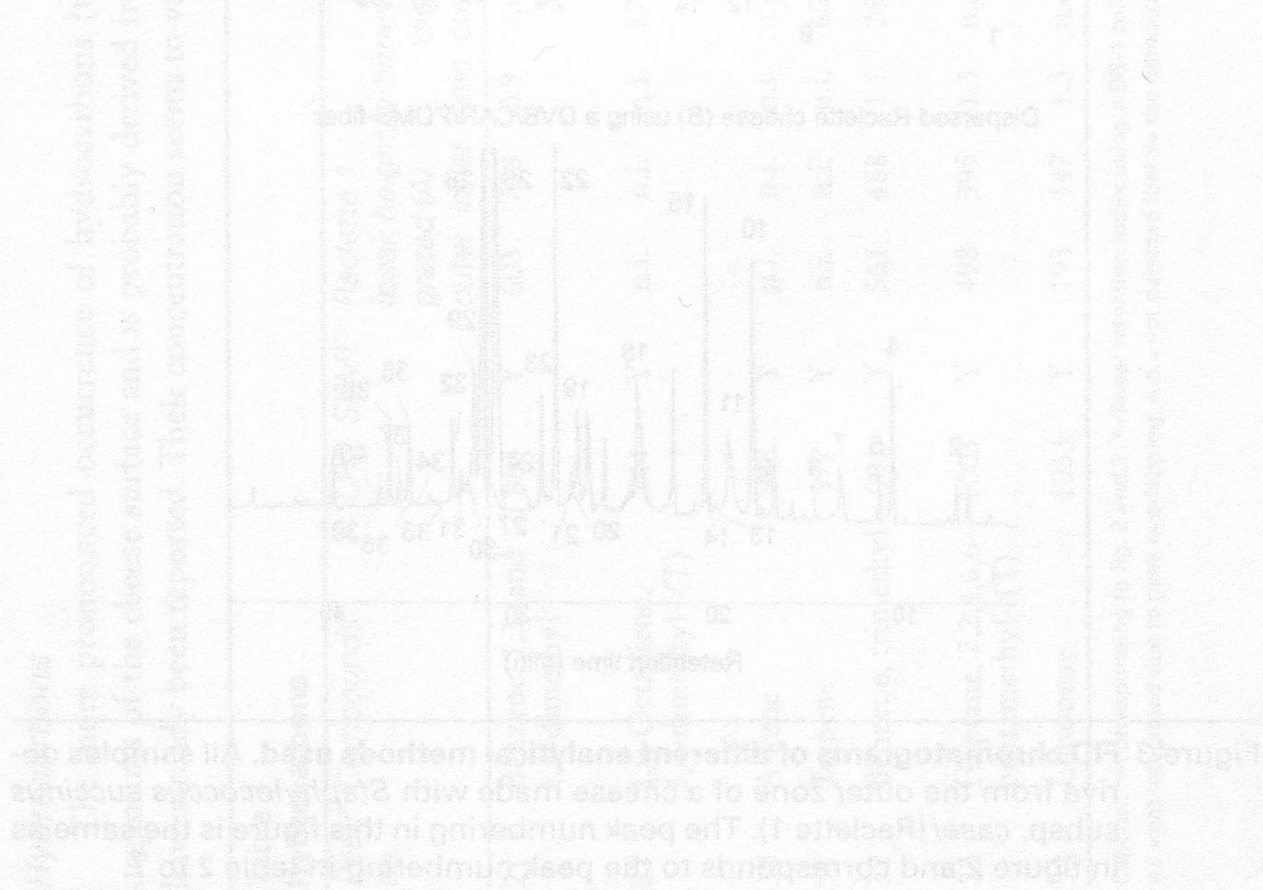
Due to the uncertainty of the chromatographic data (approx.  $\pm 20\%$  of the FID peak height), differences in the concentration of volatile components are considered as significant only when the peak ratio (outer/inner zone) was higher than 1.5 or lower than 0.6. The peaks generated by the SPME fibres themselves (artefacts) were omitted.

Unfortunately the addition of water in method B did not result in a decrease in overlapping of peaks as expected due to high concentrations of volatile fatty acids. This effect was reported by using the Purge and Trap method (16).

The following components 1-octanol, 1-hexanol, 2-undecanone, acetic acid, butanoic acid, 2-methyl butanoic acid, 3,7-dimethyl 1,6-octadiene, terpenes and trimethyl benzene were better extracted from dispersed samples with the addition of water (B), whereas all other compounds were extracted better from grated samples without any addition of water (A).

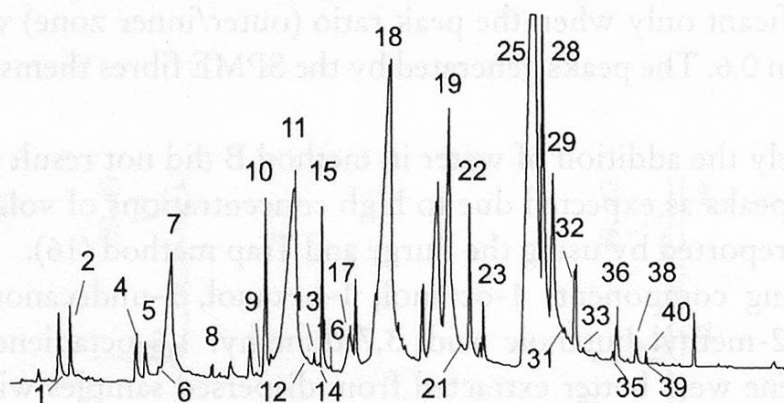
Hydrophobic compounds were isolated better with fibres coated with DVB/CAR/PDMS. Figure 3 shows typical FID chromatograms of the grated (A) outer zone of cheese made with *S. succinus* subsp. *casei*, using the SMPE fibre CAR/PDMS and DVB/CAR/PDMS, and dispersed samples (B) using the SMPE fibre DVB/CAR/PDMS.

The results had shown much more significant concentration gradients if the discarded zones had been introduced in this study. This part of the block was, however, discarded because it is not edible and may contain pathogens such as *Listeria monocytogenes* (17).

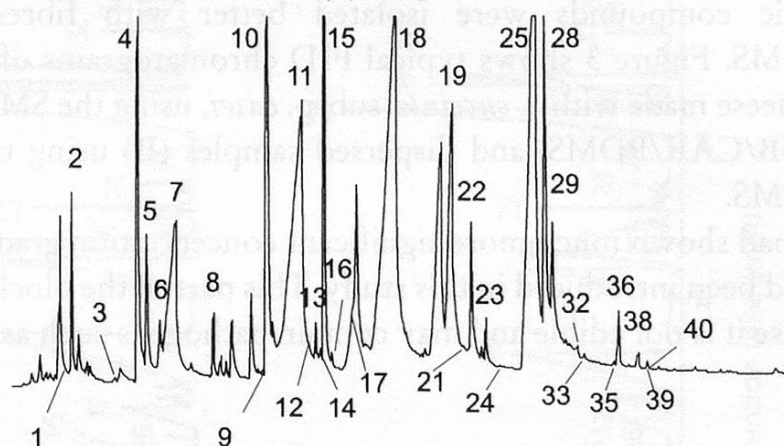




Grated Raclette cheese (A) using a DVB/CAR/PDMS-fiber



Grated Raclette cheese (A) using a CAR/PDMS-fiber



Dispersed Raclette cheese (B) using a DVB/CAR/PDMS-fiber

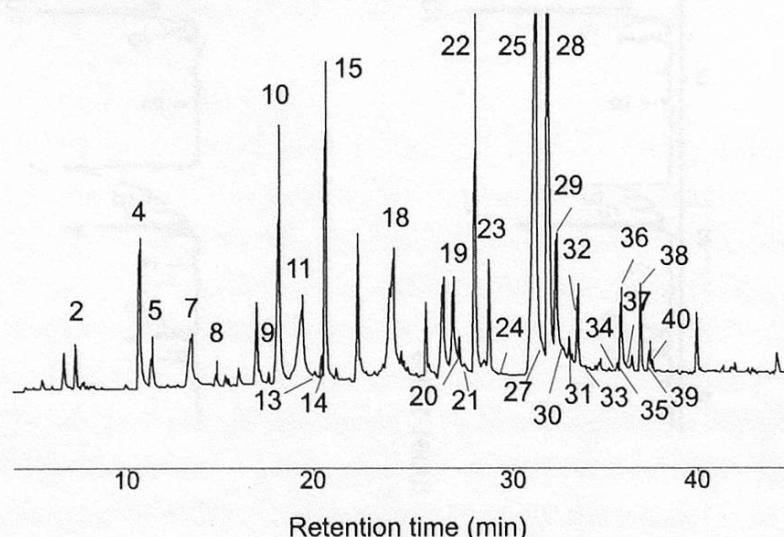


Figure 3 **FID chromatograms of different analytical methods used.** All samples derive from the outer zone of a cheese made with *Staphylococcus succinus* subsp. *casei* (Raclette 1). The peak numbering in this figure is the same as in figure 2 and corresponds to the peak numbering in table 2 to 7.

## Hydrocarbons

The more pronounced occurrence of hydrocarbons (table 2) in the outer zone indicates their biosynthesis by micro-organisms of the cheese surface and is probably derived from lipids (18). Trimethyl benzene, 1,3- and 1,4-dimethyl benzene have already been reported. Their concentration seems to vary during deep frozen storage of samples (19).

**Table 2**  
**Hydrocarbons**

Peak <sup>a</sup> no.	Compounds	LRI <sup>b</sup>	SPME <sup>c</sup>	Raclette 1 (peak height, arbitrary unit)						Raclette 2 (peak height, arbitrary unit)						Odour de- scriptor	Biblio- graphic references
				grated (A)			dispersed (B)			grated (A)			dispersed (B)				
				outer	inner	ratio	outer	inner	ratio	outer	inner	ratio	outer	inner	ratio		
21	Benzene, 1,3- and 1,4-dimethyl	863	Y	603	708	0.9	n.d.	n.d.	n.d.	431	230	1.9	n.d.	n.d.	n.d.	dry, lightly pungent	(41)
27	1,6-Octadiene, 3,7-dimethyl- (T)	944	Y	n.i.	n.i.	n.i.	872	667	1.3	804	352	2.3	607	282	2.2	terpene, mint, harsh	–
30	Alkene	968	Y	n.i.	n.i.	n.i.	n.d.	n.d.	n.d.	791	449	1.8	n.d.	n.d.	n.d.		(41, 42)
31	Terpene	977	Y	n.i.	n.i.	n.i.	601	485	1.2	482	308	1.6	703	540	1.3	woody	(42)
32	Benzene, trimethyl-	991	Y	561	488	1.1	289	198	1.5	332	200	1.7	432	216	2.0	herba- ceous	(42)
33	Heptane, 2,2,4,6,6- pentamethyl- (T)	1003	Y	498	395	1.3	n.d.	n.d.	n.d.	1145	566	2.0	n.d.	n.d.	n.d.		(43)
34	Limonene	1033	Y	193	147	1.3	n.d.	n.d.	n.d.	107	50	2.1	n.d.	n.d.	n.d.	green	(42, 44–46)

Caption: <sup>a</sup>=corresponding to fig. 2 and 3; <sup>b</sup>=linear retention index using a DB-1 column; <sup>c</sup>X=CAR/PDMS-fibre, Y=DVB/CAR/PDMS-fibre; (T)=tentatively identified; n.i.=not integrated due to peak overlapping; n.d.=not detected (below the detection limit: 50 arbitrary units).

## Aldehydes

Aldehydes (table 3) are derived either from amino acids (20), methional (21) or from lipids (22). They are usually transitory compounds in cheeses because they are rapidly reduced to alcohols or oxidised to the corresponding carboxylic acids (23). In the current study, 3-methyl butanol and 2-methyl propanoic acid, derived from 3-methyl butanal and 2-methyl 2-propanal respectively, were e.g. detected.

**Table 3**  
**Aldehydes**

Peak <sup>a</sup> no.	Compounds	LRI <sup>b</sup>	SPME <sup>c</sup>	Raclette 1 (peak height, arbitrary unit)						Raclette 2 (peak height, arbitrary unit)						Odour de- scriptor	Biblio- graphic references
				grated (A)			dispersed (B)			grated (A)			dispersed (B)				
				outer	inner	ratio	outer	inner	ratio	outer	inner	ratio	outer	inner	ratio		
1	2-Propenal	462	X	188	247	0.8	n.d.	n.d.	n.d.	194	446	0.4	n.d.	n.d.	n.d.		(47)
3	Propanal, 2-methyl-	532	X	114	267	0.4	n.d.	n.d.	n.d.	228	267	0.9	n.d.	n.d.	n.d.	bakery- like, malty	(42, 44, 48, 49)
8	Butanal, 3-methyl-	634	X	1578	2447	0.6	n.d.	n.d.	n.d.	2546	3321	0.8	n.d.	n.d.	n.d.	milky, chocolate	(34, 36, 49–51)
9	Pentanal	674	X	192	283	0.7	n.d.	n.d.	n.d.	242	457	0.5	n.d.	n.d.	n.d.	pungent, medicinal	(42, 44, 52)
26	Benzaldehyde	940	X	n.i.	n.i.	n.i.	n.d.	n.d.	n.d.	826	301	2.7	n.d.	n.d.	n.d.	aromatic, sweet	(42, 44, 53)

Caption: See table 2



## Ketones

Ketones (table 4) are common constituents found in most cheese varieties. Moulds, such as *Geotrichum candidum*, are most important for their formation in mold-ripened cheeses. The precursors of ketones are mainly fatty acids which are transformed by  $\beta$ -oxidation and therefore originate from the cheese surface (20). In Raclette cheese, all ketones detected occurred in higher amounts in the outer than inner zones.

Table 4  
Ketones

Peak <sup>a</sup> no.	Compounds	LRI <sup>b</sup>	SPME <sup>c</sup>	Raclette 1 (peak height, arbitrary unit)						Raclette 2 (peak height, arbitrary unit)						Odour de- scriptor	Biblio- graphic references
				grated (A)			dispersed (B)			grated (A)			dispersed (B)				
				outer	inner	ratio	outer	inner	ratio	outer	inner	ratio	outer	inner	ratio		
2	2-Propanone	468	X	4575	1415	3.2	n.d.	n.d.	n.d.	2424	1325	1.8	n.d.	n.d.	n.d.	slightly fruity	(46, 52)
4	2,3-Butanedione	558	X	9897	3878	2.6	n.d.	n.d.	n.d.	4922	2522	2.0	n.d.	n.d.	n.d.	buttery, creamy	(49, 50, 52)
5	2-Butanone	570	X	3545	1785	2.0	n.d.	n.d.	n.d.	1277	847	1.5	n.d.	n.d.	n.d.	slightly fruity	(41, 52, 54)
16	2-Pentanone, 3-methyl-	736	X	562	361	1.6	n.d.	n.d.	n.d.	349	200	1.7	n.d.	n.d.	n.d.		(41, 42, 44)
22	2-Heptanone	871	Y	4062	1971	2.1	n.d.	n.d.	n.d.	2589	1493	1.7	n.d.	n.d.	n.d.	fruity, musty, sweet	(36, 50, 51)
36	Ethanone, 1-phenyl-	1048	Y	1463	285	5.1	n.d.	n.d.	n.d.	349	75	4.7	n.d.	n.d.	n.d.	green	(41, 42, 44)
38	2-Nonanone	1074	Y	775	250	3.1	n.d.	n.d.	n.d.	351	247	1.4	n.d.	n.d.	n.d.	malty, cheese- like	(36, 49)
40	2-Undecanone	1278	Y	154	59	2.6	244	109	2.2	70	50	1.4	157	75	2.1	floral	(34, 36, 49)

Caption: See table 2

## Alcohols

Alcohols (table 5) are considered to originate from the corresponding aldehydes by a reaction pathway involving alcohol dehydrogenases. With the exception of 1-hexanol, they were mainly located in the outer zone. As already mentioned before, 2-butanol could be a precursor of 2-butanone (24, 25). The presence of the branched-chain primary alcohols such as 2-methyl-1-butanol, 3-methyl-1-butanol and 1-phenyl ethanol indicates the conversion of the aldehydes produced from isoleucine, leucine and phenylalanine, respectively.

**Table 5**  
**Alcohols**

Peak <sup>a</sup> no.	Compounds	LRI <sup>b</sup>	SPME <sup>c</sup>	Raclette 1 (peak height, arbitrary unit)						Raclette 2 (peak height, arbitrary unit)						Odour de- scriptor	Biblio- graphic references
				grated (A)			dispersed (B)			grated (A)			dispersed (B)				
				outer	inner	ratio	outer	inner	ratio	outer	inner	ratio	outer	inner	ratio		
6	2-Butanol	585	X	1399	957	1.5	n.d.	n.d.	n.d.	661	446	1.5	n.d.	n.d.	n.d.		(2, 42)
12	3-Buten-1-ol, 3-methyl-	716	X	822	562	1.5	n.d.	n.d.	n.d.	303	206	1.5	n.d.	n.d.	n.d.	slightly spicy	(44, 46)
13	1-Butanol, 3-methyl-	721	Y	1320	671	2.0	n.d.	n.d.	n.d.	763	470	1.6	n.d.	n.d.	n.d.		(36, 42, 44)
14	1-Butanol, 2-methyl-	726	X	657	354	1.9	n.d.	n.d.	n.d.	360	152	2.4	n.d.	n.d.	n.d.		(36)
20	1-Hexanol	853	Y	n.d.	n.d.	n.d.	965	1037	0.9	1107	531	2.1	1159	458	2.5	medicinal, fruity	(42, 44)
23	2-Heptanol	886	Y	1655	598	2.8	n.d.	n.d.	n.d.	1093	461	2.4	n.d.	n.d.	n.d.	slightly grassy	(35, 36, 49)
35	Ethanol, 1-phenyl-	1043	Y	367	152	2.4	n.d.	n.d.	n.d.	142	56	2.5	n.d.	n.d.	n.d.	aromatic, green	(44)
37	1-Octanol	1051	Y	n.d.	n.d.	n.d.	217	105	2.1	n.d.	n.d.	n.d.	159	50	3.2		(42, 44)

Caption: See table 2

## Carboxylic acids

Table 6 shows the relative concentrations of carboxylic acids in the inner and outer zones of the Raclette cheese. The distribution of carboxylic acids was very heterogeneous, probably due to intensive changes in formation and degradation during ripening (4). In contrast to *S. equorum* subsp. *linens*, *S. succinus* subsp. *casei* ferments propionic acid (12). This fact could explain why the outer/inner ratios of propionic acid of cheese produced with *S. succinus* subsp. *casei* are lower than 1 in contrast to the cheese produced with *S. equorum* subsp. *linens*. All the carboxylic acids detected have also been found in Gruyère AOC (4).

Table 6  
Carboxylic acids

Peak <sup>a</sup> no.	Compounds	LRI <sup>b</sup>	SPME <sup>c</sup>	Raclette 1 (peak height, arbitrary unit)						Raclette 2 (peak height, arbitrary unit)						Odour de- scriptor	Biblio- graphic references
				grated (A)			dispersed (B)			grated (A)			dispersed (B)				
				outer	inner	ratio	outer	inner	ratio	outer	inner	ratio	outer	inner	ratio		
7	Acetic acid	594	Y	n.d.	n.d.	n.d.	1291	1313	1.0	n.d.	n.d.	n.d.	1252	676	1.9	aluminium acetate	(34, 35, 49)
11	Propanoic acid	702	Y	5047	5730	0.9	n.d.	n.d.	n.d.	3293	1362	2.4	n.d.	n.d.	n.d.	sour milk-like, fruity	(37, 49, 51)
17	Propanoic acid, 2-methyl-	752	Y	1195	1604	0.7	548	1008	0.5	558	316	1.8	n.d.	n.d.	n.d.	acidic, cheese-like	(31, 34, 49)
18	Butanoic acid	780	Y	n.d.	n.d.	n.d.	3232	4660	0.7	n.d.	n.d.	n.d.	3451	2182	1.6	sweaty, rancid	(35, 37, 51)
19	Butanoic acid, 2-methyl-	839	Y	n.d.	n.d.	n.d.	2464	3584	0.7	n.d.	n.d.	n.d.	1924	614	3.1	sweaty, cheese-like	(37, 51, 55, 56)
25	Pentanoic acid, 4-methyl-	937	Y	18849	15071	1.3	n.d.	n.d.	n.d.	4811	1231	3.9	n.d.	n.d.	n.d.	cheese-like, pungent	(55)
29	Hexanoic acid	962	Y	4770	4778	1.0	n.d.	n.d.	n.d.	2648	1394	1.9	n.d.	n.d.	n.d.	cheesy, fatty, sweaty	(35, 37, 49, 51)

Caption: See table 2



### Miscellaneous substances

Several esters are produced by yeasts (25) and staphylococci (26) which show a trend for esterifying butanoic acid with primary alcohols (27). The ester found in this study presented an outer/inner ratio >1. Moreover, Raclette cheeses made with *S. succinus* subsp. *casei* contained about twenty times more phenol than cheese produced with *S. equorum* subsp. *linens* (table 7). This compound could have been formed from benzene under oxygen-limited conditions beneath the cheese rind (28). The lack of benzene formation may be due to a high turnover of benzene or to a difference in the phenol degradation pathway between the staphylococci. It is however more probable that phenol was formed from shikimic acid (29) or from tyrosine (30, 31) from the biomass instead of benzene (32).

Table 7  
Miscellaneous substances

Peak <sup>a</sup> no.	Compounds	LRI <sup>b</sup>	SPME <sup>c</sup>	Raclette 1 (peak height, arbitrary unit)						Raclette 2 (peak height, arbitrary unit)						Odour de- scriptor	Biblio- graphic references
				grated (A)			dispersed (B)			grated (A)			dispersed (B)				
				outer	inner	ratio	outer	inner	ratio	outer	inner	ratio	outer	inner	ratio		
10	Acetoin	680	Y	4418	2078	2.1	n.d.	n.d.	n.d.	5506	3603	1.5	n.d.	n.d.	n.d.	buttery	(2, 44, 52)
15	Disulfide, dimethyl	729	Y	4166	921	4.5	n.d.	n.d.	n.d.	1681	455	3.7	n.d.	n.d.	n.d.	cooked vege- tables	(42, 44, 49, 51)
24	Ester	900	Y	107	88	1.2	n.d.	n.d.	n.d.	78	46	1.7	n.d.	n.d.	n.d.	bakery	(2, 42, 44)
28	Phenol	955	Y	26267	8216	3.2	n.d.	n.d.	n.d.	1158	458	2.5	n.d.	n.d.	n.d.	medici- nal	(41, 42, 44)
39	Indol	1276	Y	186	71	2.6	n.d.	n.d.	n.d.	50	50	1.0	n.d.	n.d.	n.d.	moth ball, stable	(42, 44, 51)

Caption: See table 2

Methional was neither detected with GC-MS (its detection is very difficult) nor with olfactometry. This is unusual since methional can be produced by *Brevibacterium linens* and *Geotrichum candidum* (20) and has been detected in many other types of cheese (20, 33–37). Possibly it has been missed due to peakoverlapping with all three detectors used or because methional was below the detection or recognition threshold.

## Microbiological analysis

Figures 4 and 5 show the development of microorganisms on the surface of Raclette 1 and 2. The colony forming units (cfu) isolated from the two batches did not differ significantly considering the non-staphylococcal microflora. After 6 weeks of ripening the genus *Corynebacterium* was dominant ( $10^8$  cfu/cm<sup>2</sup>) followed by *Arthrobacter* ( $10^7$  cfu/cm<sup>2</sup>) and *Staphylococcus* ( $10^7$  cfu/cm<sup>2</sup> on Raclette 1 and  $7 \times 10^7$  cfu/cm<sup>2</sup> on Raclette 2). In the case of these genera the results correspond with other studies (11, 38). The *Enterobacteriaceae* were at levels of about  $10^6$  cfu/cm<sup>2</sup> during the whole ripening period. These counts are about 10 fold higher than previously reported on Tilsiter (11).

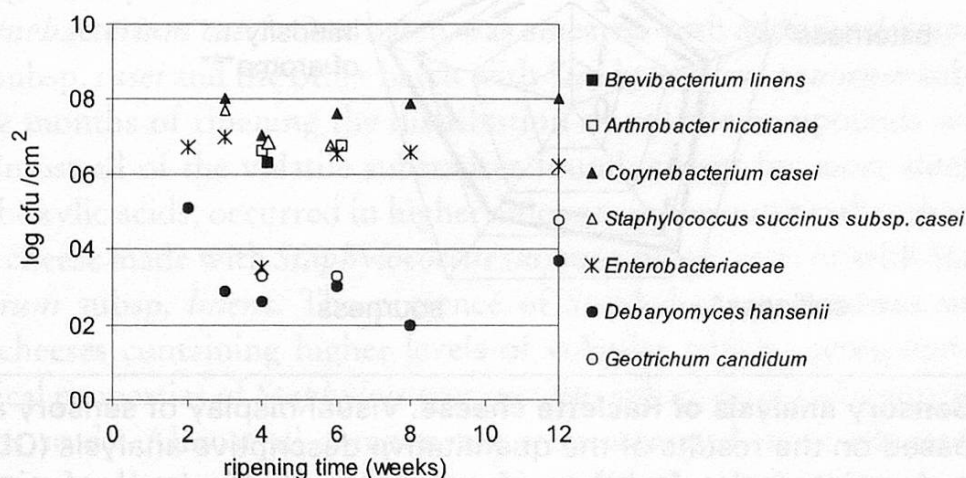


Figure 4 Development of microorganisms of Raclette 1 which contained *Staphylococcus succinus subsp. casei* DSM 15096<sup>T</sup> in the surface starter culture.

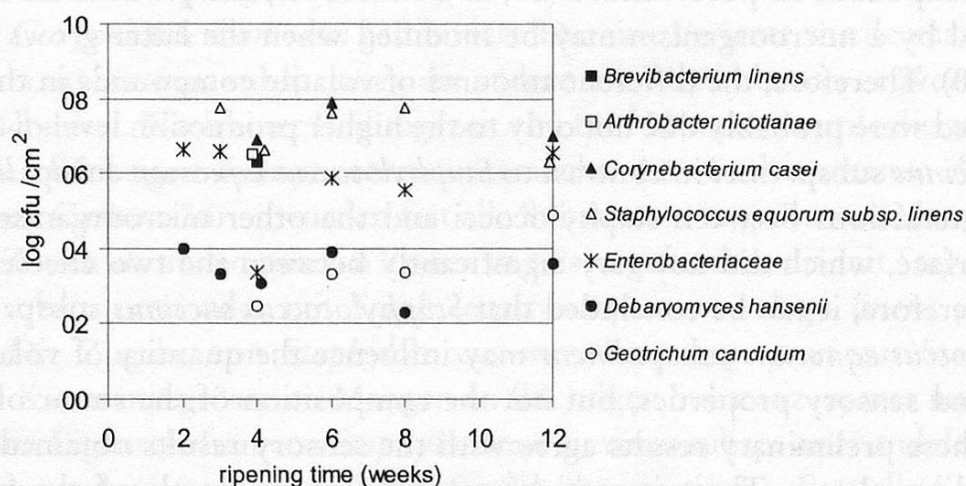


Figure 5 Development of microorganisms of Raclette 2 which contained *Staphylococcus equorum subsp. linens* DSM 15097<sup>T</sup> in the surface starter culture.

## Sensory analysis

The application of *S. equorum* subsp. *linens* resulted in a significantly milder product, with respect to all attributes tested, compared to cheeses produced with *S. succinus* subsp. *casei* DSM 15096<sup>T</sup> (fig. 6). It has been shown previously that these results are independent of the factory (12).

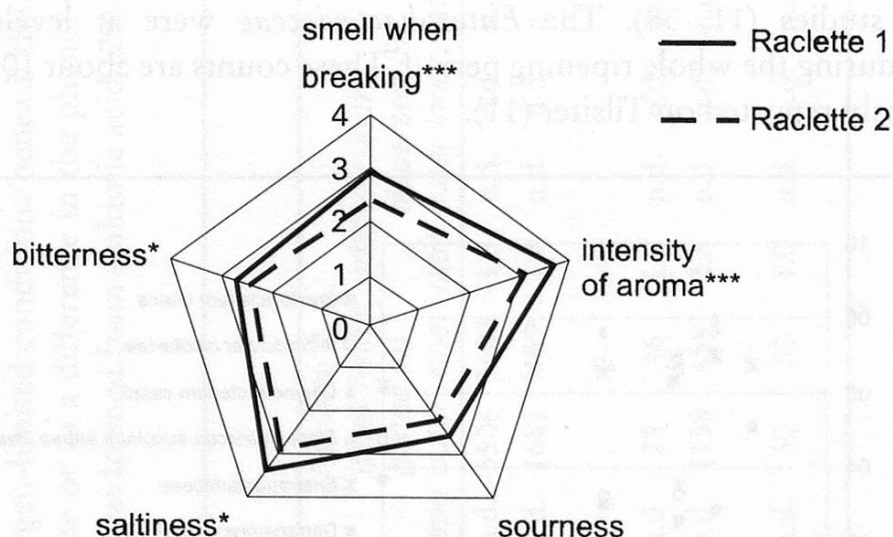


Figure 6 **Sensory analysis of Raclette cheese.** Visual display of sensory attributes based on the results of the quantitative descriptive analysis (QDA) using a 4 point scale; (number of assessors N=15; level of significance \* =  $p < 0.05$ , \*\*\* =  $p < 0.001$ )(12).

## Conclusion

It has been shown previously that staphylococci are able to produce different volatile compounds in pure culture (26, 27). Moreover, the production of a given compound by a microorganism may be modified when the latter grows in mixed cultures (8). Therefore, the different amounts of volatile compounds in the cheeses investigated were probably due not only to the higher production level of *Staphylococcus succinus* subsp. *casei* in contrast to *Staphylococcus equorum* subsp. *linens*, but also to interactions between staphylococci and the other microorganisms of the cheese surface, which did not vary significantly between the two cheeses investigated. Therefore, it can be concluded that *Staphylococcus succinus* subsp. *casei* and *Staphylococcus equorum* subsp. *linens* may influence the quantity of volatile compounds and sensory properties, but not the composition of the smear of Raclette cheese. These preliminary results agree with the sensory results obtained with the same Raclette cheese. There it was shown that, independently of the factory, in experimental Raclette cheese, the application of *Staphylococcus equorum* subsp. *linens* DSM 15097<sup>T</sup> results in a significantly milder product compared to cheese produced with *S. succinus* subsp. *casei* DSM 15096<sup>T</sup>.



The higher rate of biochemical reactions in *Staphylococcus succinus* subsp. *casei* compared to *Staphylococcus equorum* subsp. *linens* (12) could possibly explain the higher amounts of alcohols, hydrocarbons and ketones in the outer zone of the cheese produced with *Staphylococcus succinus* subsp. *casei*. Further work, however, is necessary with many more Raclette cheese loaves than the two loaves currently investigated to confirm these preliminary results. In addition, Raclette does not seem to be investigated in broad range reviews and databases on volatile flavour compounds (39, 40).

## Summary

Raclette cheeses made from thermised milk were smeared with a starter culture containing *Debaryomyces hansenii*, *Geotrichum candidum*, *Arthrobacter nicotianae* and *Corynebacterium casei*. One batch was smeared with additional *Staphylococcus succinus* subsp. *casei* and the other batch with *Staphylococcus equorum* subsp. *linens*. After five months of ripening the distribution of volatile compounds was investigated. Almost all of the volatile substances found, except for most aldehydes and some carboxylic acids, occurred in higher amounts in the outer rather than the inner zones, in cheese made with *Staphylococcus succinus* subsp. *casei* or with *Staphylococcus equorum* subsp. *linens*. The presence of *Staphylococcus succinus* subsp. *casei* leads to cheeses containing higher levels of volatiles which corresponds with the biochemical properties of *Staphylococcus succinus* subsp. *casei* and sensory results of a previous study. Almost all components were extracted more efficiently by not adding water to the grated samples using the solid phase microextraction (SPME) technique.

## Zusammenfassung

Aus thermisierter Milch hergestellter Raclette-Käse wurde mit Starterkulturen bestehend aus *Debaryomyces hansenii*, *Geotrichum candidum*, *Arthrobacter nicotianae* und *Corynebacterium casei* geschmiert. Die eine Variante wurde zusätzlich mit *Staphylococcus succinus* subsp. *casei*, die andere mit *Staphylococcus equorum* subsp. *linens* geschmiert. Nach einer Reifungszeit von fünf Monaten wurde die zonale Verteilung der flüchtigen Komponenten untersucht. Ausser den meisten Aldehyden und einigen Carbonsäuren wurden fast alle Substanzen in grösseren Mengen in den äusseren Zonen als in den inneren Zonen in Käsen gefunden, die mit *Staphylococcus succinus* subsp. *casei* oder mit *Staphylococcus equorum* subsp. *linens* geschmiert wurden. Die Zugabe von *Staphylococcus succinus* subsp. *casei* zur Starterkultur führte zu Käsen mit grösseren Mengen an flüchtigen Substanzen, was mit den biochemischen Eigenschaften von *Staphylococcus succinus* subsp. *casei* und den sensorischen Untersuchungen einer früheren Studie übereinstimmt. Fast alle Komponenten wurden effizienter extrahiert ohne Zugabe von Wasser zu den geriebenen Proben mittels SPME.

## Résumé

Des fromages à raclette fabriqués avec du lait pasteurisé ont été emmorgés avec un levain contenant *Debaryomyces hansenii*, *Geotrichum candidum*, *Arthrobacter nicotianae* et *Corynebacterium casei*. L'une des charges a en outre été emmorgée avec *Staphylococcus succinus* subsp. *casei*, alors que l'autre l'a été avec *Staphylococcus equorum* subsp. *linens*. Après cinq mois d'affinage, la distribution zonale des composés volatils a été étudiée. A l'exception de la plupart des aldéhydes et de quelques acides carboxyliques, la plupart des composés volatils ont été trouvés en quantités plus élevées dans les zones extérieures que dans les zones intérieures des meules, qu'elles aient été emmorgées avec *Staphylococcus succinus* subsp. *casei* ou avec *Staphylococcus equorum* subsp. *linens*. L'ajout de *Staphylococcus succinus* subsp. *casei* au levain a conduit à des fromages contenant plus de composés volatils, ce qui est en accord avec les propriétés biochimiques de cette souche et avec les résultats sensoriels déjà publiés. Lors de leur analyse par SPME, la plupart des composés volatils ont été extraits à des taux plus élevés à partir d'échantillons râpés sans addition d'eau.

## Acknowledgements

The authors wish to thank Mr. U. Bütikofer and Mr. M. Dalla Torre (Swiss Federal Dairy Research Institute), and Mrs. G. Urbach (Australia) for their valuable review of the manuscript. This work was supported by a grant from the Swiss National Fonds SPP Biotechnology 5002-057836.

## Key words

Volatile compounds, Raclette cheese, concentration gradient, *Staphylococcus succinus* subsp. *casei*, *Staphylococcus equorum* subsp. *linens*.

## References

- 1 Liardon R., Bosset J.O. and Blanc B.: The aroma composition of Swiss Gruyère cheese. I. The alkaline volatile compounds. *Lebensm.-Wiss. Technol.* **15**, 143–147 (1982).
- 2 Bosset J.O. and Liardon R.: The aroma composition of Swiss Gruyère cheese II. The neutral volatile components. *Lebensm.-Wiss. Technol.* **17**, 359–362 (1984).
- 3 Bosset J.O. and Liardon R.: The aroma composition of Swiss Gruyère cheese III. Relative changes in the content of alkaline and neutral volatile components during ripening. *Lebensm.-Wiss. Technol.* **18**, 178–185 (1985).
- 4 Bosset J.O., Collomb M. and Sieber R.: The aroma composition of Swiss Gruyère cheese IV. The acidic volatile components and their changes in content during ripening. *Lebensm.-Wiss. Technol.* **26**, 581–592 (1993).
- 5 Law B.A.: Cheese: Chemistry, Physics and Microbiology. 365–392. Elsevier Applied Science, London 1987.
- 6 Ha J.K. and Lindsay R.C.: Release of volatile branched-chain and other fatty acids from ruminant milk fats by various lipases. *J. Dairy Sci.* **76**, 677–90 (1993).
- 7 McSweeney P.L.H. and Sousa M.J.: Biochemical pathways for the production of flavour compounds in cheeses during ripening: A review. *Lait* **80**, 293–324 (2000).
- 8 Martin N., Berger C., Le Du C. and Spinnler H.E.: Aroma compound production in cheese curd by co-culturing with selected yeast and bacteria. *J. Dairy Sci.* **84**, 2125–35. (2001).



- 9 Berger C.: Composés d'arômes soufrés produits par la flore d'affinage des fromages à pâte molle: importance de *Geotrichum candidum*. Dissertation. INA Paris-Grignon 1999.
- 10 Stahnke L.H.: Volatiles produced by *Staphylococcus xylosus* and *Staphylococcus carnosus* during growth in sausage minces part I. Collection and identification. *Lebensm.-Wiss. u. -Technol.* **32**, 357–364 (1999).
- 11 Bockelmann W.: Development of defined surface starter cultures for the ripening of smear cheeses. *Int. Dairy J.* **12**, 123–131 (2002).
- 12 Place R.B., Hiestand D., Gallmann H.R. and Teuber M.: *Staphylococcus equorum* subsp. *linens*, subsp. nov., a starter culture component for surface ripened semi-hard cheeses. *Syst. Appl. Microbiol.* **26**, 30–37 (2003).
- 13 McLafferty F.W. and Stauffer D.B.: NBS registry of mass spectral data. Wiley, New York 1986.
- 14 Hoppe-Seyler T., Jaeger B., Bockelmann W. and Heller K.J.: Quantification and identification of microorganisms from the surface of smear cheeses. *Kieler Milchwirtschaftliche Forschungsberichte* **52**, 294–305 (2000).
- 15 Place R.B., Hiestand D., Burri S. and Teuber M.: *Staphylococcus succinus* subsp. *casei* subsp. nov., a dominant isolate from a surface ripened cheese. *Syst. Appl. Microbiol.* **25**, 353–359 (2002).
- 16 Canac-Arteaga D.: Contribution à l'amélioration de l'analyse de la fraction volatile de produits riches en eau par espace de tête dynamique couplé à la chromatographie en phase gazeuse et spectrométrie de masse. Thèse de doctorat. Université Blaise Pascal, Clermont-Ferrand 2001.
- 17 Carnio M.C., Eppert I. and Scherer S.: Analysis of the bacterial surface ripening flora of German and French smeared cheeses with respect to their anti-listeria potential. *Int. J. Food Microbiol.* **47**, 89–97 (1999).
- 18 Berger C., Khan J.A., Molimard P., Martin N. and Spinnler H.E.: Production of sulfur flavors by ten strains of *Geotrichum candidum*. *Appl. Environ. Microbiol.* **65**, 5510–5514 (1999).
- 19 Bosset J.O., Gubler M., Bütikofer U. and Gauch R.: Mono-, di- and trimethyl benzene in frozen cheese samples: Natural metabolites or environmental pollutants? *Mitt. Lebensm. Hyg.* **91**, 287–299 (2000).
- 20 Molimard P. and Spinnler H.E.: Review: Compounds involved in the flavor of surface mold-ripened cheeses: Origins and properties. *J. Dairy Sci.* **79**, 169–184 (1996).
- 21 Weimer B., Seefeldt K. and Dias B.: Sulfur metabolism in bacteria associated with cheese. *Antonie van Leeuwenhoek* **76**, 247–261 (1999).
- 22 Urbach G.: The flavour of milk and dairy products: II. Cheese: contribution of volatile compounds. *Int. J. Dairy Technol.* **50**, 79–89 (1997).
- 23 Lees G.J. and Jago G.R.: Role of acetaldehyde in metabolism – review 2. Metabolism of acetaldehyde in cultured dairy products. *J. Dairy Sci.* **61**, 1216–1224 (1978).
- 24 Anderson D.F. and Day E.A.: Quantitation, evaluation and effect of certain microorganisms on flavor components of blue cheese. *J. Agr. Food Chem.* **14**, 241 (1966).
- 25 Jollivet N., Chataud J., Vayssier Y., Bensoussan M. and Belin J.M.: Production of volatile compounds in model milk and cheese media by eight strains of *Geotrichum candidum*. *J. Dairy Res.* **61**, 241–248 (1994).
- 26 Vergnais L., Masson F., Montel M.C., Berdagué J.L. and Talon R.: Evaluation of solid-phase microextraction for analysis of volatile metabolites produced by staphylococci. *J. Agric. Food Chem.* **46**, 228–234 (1998).
- 27 Talon R., Chastagnac C., Vergnais L., Montel M.C. and Berdagué J.L.: Production of esters by staphylococci. *Int. J. Food Microbiol.* **45**, 143–150 (1998).
- 28 Yerushalmi L., Lascourreges J.F. and Guiot S.R.: Kinetics of benzene biotransformation under microaerophilic and oxygen-limited conditions. *Biotechnol. Bioeng.* **79**, 347–55 (2002).
- 29 Gibson J.M., Thomas P.S., Thomas J.D., Barker J.L., Chandran S.S., Harrup M.K., Draths K.M. and Frost J.W.: Benzene-free synthesis of phenol. *Angew. Chem. Int. Ed.* **40**, 1945–1948 (2001).



- 30 Parliment T.H., Kolor M.G. and Rizzo D.J.: Volatile components of Limburger cheese. *J. Agr. Food Chem.* **30**, 1006–1008 (1982).
- 31 Jollivet N., Bézenger M.-C., Vayssier Y. and Berli J.-M.: Production of volatile compounds in liquid cultures by six strains of coryneform bacteria. *Appl. Microbiol. Biotechnol.* **36**, 790–794 (1992).
- 32 Yagil R.: Camel milk – a review. *Farm Animals* **2**, 81–99 (1987).
- 33 Preininger M. and Grosch W.: Evaluation of key odorants of the neutral volatiles of Emmentaler cheese by the calculation of odour activity values. *Lebensm.-Wiss. u. -Technol.* **27**, 237–244 (1994).
- 34 Kubickova J. and Grosch W.: Quantification of potent odorants in Camembert cheese and calculation of their odour activity values. *Int. Dairy J.* **8**, 17–23 (1998).
- 35 Moio L. and Addeo F.: Grana Padano cheese aroma. *J. Dairy Res.* **65**, 317–333 (1998).
- 36 Moio L., Piombino P. and Addeo F.: Odour-impact compounds of Gorgonzola cheese. *J. Dairy Res.* **67**, 273–285 (2000).
- 37 Rychlik M. and Bosset J.O.: Flavour and off-flavour compounds of Swiss Gruyère cheese. Identification of key odorants by quantitative instrumental and sensory studies. *Int. Dairy J.* **11**, 903–910 (2001).
- 38 Brennan N.M., Ward A.C., Beresford T.P., Fox P.F., Goodfellow M. and Cogan T.M.: Biodiversity of the bacterial flora on the surface of a smear cheese. *Appl. Environ. Microbiol.* **68**, 820–830 (2002).
- 39 Nijssen L.M., Visscher C.A., Maarse H., Willemsens L.C. and Boelens M.H.: Volatile Compounds in Food, Qualitative and Quantitative Data. 7th ed. Zeist, The Netherlands, TNO Nutrition and Food Research 1996.
- 40 Curioni P.M.G. and Bosset J.O.: Key odorants in various cheese types as determined by gas chromatography-olfactometry. *Int. Dairy J.* **12**, 959–984 (2002).
- 41 Dumont J.P., Roger S., Cerf P. and Adda J.: Etude des composés neutres volatils présents dans le Camembert. *Lait* **54**, 501–516 (1974).
- 42 Dumont J.P., Adda J. et Rousseaux P.: Exemple de variation de l'arôme à l'intérieur d'un même type de fromage : le Comté. *Lebensm.-Wiss. u. -Technol.* **14**, 198–202 (1981).
- 43 Dumont J.P., Degas C. et Adda J.: L'arôme du Pont l'Évêque. Mise en évidence de constituants volatils quantitativement mineurs. *Lait* **56**, 177–180 (1976).
- 44 Dumont J.P. and Adda J.: Occurrence of sesquiterpenes in mountain cheese volatiles. *J. Agr. Food Chem.* **26**, 364–367 (1978).
- 45 Gonzales de Llano D., Ramos M., Polo C., Sanz J. and Martinez-Castro I.: Evolution of the volatile compounds of an artisanal blue cheese during ripening. *J. Dairy Sci.* **73**, 1676–1683 (1990).
- 46 Barbieri G., Bolzoni L., Careri M., Mangia A., Parloari G., Spagnoli S. and Virgili R.: Study of the volatile fraction of parmesan cheese. *J. Agr. Food Chem.* **42**, 1170–1176 (1994).
- 47 Collin S., Osman M., Delcambre S., Elzayat A.I. and Dufour J.P.: Investigation of volatile flavor compounds in fresh and ripened domiati cheese. *J. Agr. Food Chem.* **41**, 1659–1663 (1993).
- 48 Langler J.E., Libbey L.M. and Day E.A.: Identification and evaluation of selected compounds in Swiss cheese flavor. *J. Agr. Food Chem.* **15**, 386–391 (1967).
- 49 Kubickova J. and Grosch W.: Evaluation of potent odorants of Camembert cheese by dilution and concentration techniques. *Int. Dairy J.* **7**, 65–70 (1997).
- 50 Preininger M., Rychlik M. and Grosch W.: Trends in flavour research. ed. Elsevier, Amsterdam 1994.
- 51 Rychlik M. and Bosset J.O.: Flavour and off-flavour compounds of Swiss Gruyere cheese. Evaluation of potent odorants. *Int. Dairy J.* **11**, 895–901 (2001).

- 52 Arora G., Cormier F. and Lee B.: Analysis of odor-active volatiles in cheddar cheese head-space by multidimensional GC/MS sniffing. *J. Agr. Food Chem.* **43**, 748–752 (1995).
- 53 Karahadian C., Josephson D.B. and Lindsay R.C.: Contribution of *Penicillium* sp. to the flavors of Brie and Camembert cheese. *J. Dairy Sci.* **68**, 1865–1877 (1985).
- 54 Horwood J.F., Lloyd G.T. and Stark W.: Some flavor components of Feta cheese. *Aust. J. Dairy Technol.* **36**, 34–37 (1981).
- 55 Ha J.K. and Lindsay R.C.: Volatile branched-chain fatty-acids and phenolic-compounds in aged Italian cheese flavors. *J. Food Sci.* **56**, 1241–1247 (1991).
- 56 Ha J.K. and Lindsay R.C.: Contributions of cow, sheep, and goat milks to characterizing branched-chain fatty acid and phenolic flavors in varietal cheeses. *J. Dairy Sci.* **74**, 3267–3274 (1991).

Corresponding author: Dr. Jacques-Olivier Bosset, Chemistry & Physics unit,  
Swiss Federal Dairy Research Station, CH-3003 Berne,  
e-mail: [jacques-olivier.bosset@fam.admin.ch](mailto:jacques-olivier.bosset@fam.admin.ch)