

Zeitschrift: Hochparterre : Zeitschrift für Architektur und Design
Herausgeber: Hochparterre
Band: 22 (2009)
Heft: [4]: The essence of architecture : Röthlisberger: swiss quality woodwork

Artikel: Restoring past splendour
Autor: Huber, Werner
DOI: <https://doi.org/10.5169/seals-123787>

Nutzungsbedingungen

Die ETH-Bibliothek ist die Anbieterin der digitalisierten Zeitschriften auf E-Periodica. Sie besitzt keine Urheberrechte an den Zeitschriften und ist nicht verantwortlich für deren Inhalte. Die Rechte liegen in der Regel bei den Herausgebern beziehungsweise den externen Rechteinhabern. Das Veröffentlichen von Bildern in Print- und Online-Publikationen sowie auf Social Media-Kanälen oder Webseiten ist nur mit vorheriger Genehmigung der Rechteinhaber erlaubt. [Mehr erfahren](#)

Conditions d'utilisation

L'ETH Library est le fournisseur des revues numérisées. Elle ne détient aucun droit d'auteur sur les revues et n'est pas responsable de leur contenu. En règle générale, les droits sont détenus par les éditeurs ou les détenteurs de droits externes. La reproduction d'images dans des publications imprimées ou en ligne ainsi que sur des canaux de médias sociaux ou des sites web n'est autorisée qu'avec l'accord préalable des détenteurs des droits. [En savoir plus](#)

Terms of use

The ETH Library is the provider of the digitised journals. It does not own any copyrights to the journals and is not responsible for their content. The rights usually lie with the publishers or the external rights holders. Publishing images in print and online publications, as well as on social media channels or websites, is only permitted with the prior consent of the rights holders. [Find out more](#)

Download PDF: 09.08.2025

ETH-Bibliothek Zürich, E-Periodica, <https://www.e-periodica.ch>

34/35 // INTERIOR DESIGN

RESTORING PAST SPLENDOUR

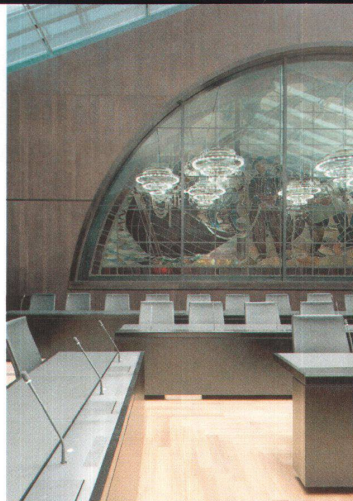
Following two years of redevelopment, the Parliament building in Berne has been returned to its original splendour. Aeby & Vincent architects carefully removed the layers that had formed over decades and arranged for the surfaces and colours to be restored. They also added some 21st century ingredients: a visitors' centre on the ground floor and a conference room on the top floor. Some of the old, original furniture was re-instated but the designers also made a number of large, bespoke tables for conference rooms, just as Hans Wilhelm Auer had done one hundred years ago. There were two basic types of tables: for conference rooms, i.e. for committees and meetings, and rows of tables for the new hall on the third floor. All of these tables are members of one family: the father is a U-shaped table for 65 people. The architects designed contemporary versions of classic models with very few legs: modern tables with historic predecessors. The new tables have a solid wood frame and a exchangeable surface. In 1902, artificial Lapra leather was used, but in 2008 the architects opted for the real thing: finest genuine leather.

The media duct with microphones and computer links runs along the centre of the table while the head end of the table is equipped with master control board. The duct may be practical and elegant, but it presented a major engineering problem: the wood panel had to be cut in half at a place where the forces are strongest. To transfer the forces from the panels (which have to be able to bear a heavyweight MP), Röthlisberger constructed a U-shaped steel base with an invisible supporting construction incorporated in the panel. The architects and furniture makers came up with an separate but similar design for the conference tables on the third floor. Once again the wooden-framed tables are leather-covered and have media ducts, but they are more angular and stained black. The rows of tables are fixed to the floor. The architects made a 1:1 scale model as a basis for the work carried out at Röthlisberger. Many detailed plans had been passed to and fro before the designers' expectations and the technical feasibility found consensus. Author:

Werner Huber, photos: Thomas Telley

REDEVELOPMENT OF PARLIAMENT BUILDING, 2008

- > Address: Bundesplatz, Berne
- > Client: Bundesamt für Bauten und Logistik, Berne
- > Architecture: Aeby & Vincent Architects, Berne
- > Interior fit out procedure: Public tender

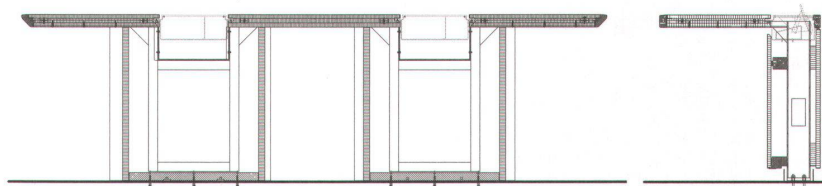


^ The new hall on the 3rd floor with rows of tables.

✓ New tables in the historic parliament rooms.



✓ The media duct running along the centre of the table may be elegant but presented major engineering problems.



^ Cross-section: conference table with media duct.