

Zeitschrift: Hochparterre : Zeitschrift für Architektur und Design
Herausgeber: Hochparterre
Band: 22 (2009)
Heft: [4]: The essence of architecture : Röthlisberger: swiss quality woodwork

Artikel: A large piece of built-in furniture
Autor: Loderer, Benedikt
DOI: <https://doi.org/10.5169/seals-123784>

Nutzungsbedingungen

Die ETH-Bibliothek ist die Anbieterin der digitalisierten Zeitschriften auf E-Periodica. Sie besitzt keine Urheberrechte an den Zeitschriften und ist nicht verantwortlich für deren Inhalte. Die Rechte liegen in der Regel bei den Herausgebern beziehungsweise den externen Rechteinhabern. Das Veröffentlichen von Bildern in Print- und Online-Publikationen sowie auf Social Media-Kanälen oder Webseiten ist nur mit vorheriger Genehmigung der Rechteinhaber erlaubt. [Mehr erfahren](#)

Conditions d'utilisation

L'ETH Library est le fournisseur des revues numérisées. Elle ne détient aucun droit d'auteur sur les revues et n'est pas responsable de leur contenu. En règle générale, les droits sont détenus par les éditeurs ou les détenteurs de droits externes. La reproduction d'images dans des publications imprimées ou en ligne ainsi que sur des canaux de médias sociaux ou des sites web n'est autorisée qu'avec l'accord préalable des détenteurs des droits. [En savoir plus](#)

Terms of use

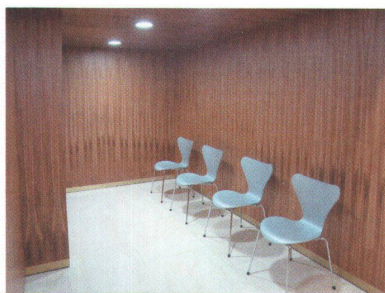
The ETH Library is the provider of the digitised journals. It does not own any copyrights to the journals and is not responsible for their content. The rights usually lie with the publishers or the external rights holders. Publishing images in print and online publications, as well as on social media channels or websites, is only permitted with the prior consent of the rights holders. [Find out more](#)

Download PDF: 07.08.2025

ETH-Bibliothek Zürich, E-Periodica, <https://www.e-periodica.ch>

> Eucalyptus wood in the waiting area provides a warm ambience.

✓ Furniture as partitions in the surgery rooms.



^ The ground plan shows the bend, and the furniture follows suit.

A LARGE PIECE OF BUILT-IN FURNITURE

An office building of the 1950s, built by architect Winkler, one storey with an elegantly bowed façade and with little depth: these were the parameters for the installation of a joint medical practice for specialists. A row of individual patient examination rooms is hidden behind a wooden wall, separating the rooms from the long corridor. Is it a wall? In fact, it is a large piece of built-in furniture, a unit with doors, washbasins and storage space integrated in it. There are some high windows set in between the ceiling and the wooden wall which enhance the cubic appearance of the unit. The slightly recessed doors create the same effect. The wall follows the façade's curvature: on the side facing the corridor it exudes elegance, whereas it is functional and medical in the surgery rooms. The eucalyptus wood on the front is flawless and almost antiseptic as you would expect a doctor's surgery to be. Author: Benedikt Loderer, photos: Lucius Ueberwasser

HIRSLANDEN CARDIO-VASCULAR SURGERY CENTRE, ZÜRICH 2007

> Address: Seestrasse 247, Zurich

> Client: Hirslanden, Zurich

> Architecture: Lucius Ueberwasser, Bern; Conex Architects, Bern, Thomas Fuhrer, Silvia Jenni



THE OPEN BANK

It would be most inappropriate for a bank referred to as "simply open – simplement ouvert" to receive its customers in a strong-room. That is why Heinz Müller of Atelier 5 chose a different scenario: a bright, open reception area on the ground floor of a 1970s building with shops and flats. People entering the building are gently guided to one of the two open rounded counters – the vestibule has been shifted by 15 degrees. The bank staff sitting behind the counter in front of a shining greenish-black wall welcome their customers at eye level. "In the reflection of the shining wall, customers can see who enters the bank after them," explains Heinz Müller. Alternatively, customers can watch shots taken by the Fribourg photographer, Michel Roggo, on a screen on the wall. There is more to the back wall than meets the eye: a storage unit from floor to ceiling separating the lobby from the back offices, incorporating statement printers and fax machines in the lower part. To the right and left of the two counters, a small oak frame separates the conference room from the corridor. Author: Meret Ernst, photo: Gaston Wicky

BANK BRANCH REBUILDING PROJECT, FLAMATT, 2004

> Address: Bernstrasse 18, Flamatt

> Clients: Freiburger Kantonalbank, Fribourg

> Architecture: Atelier 5, Berne

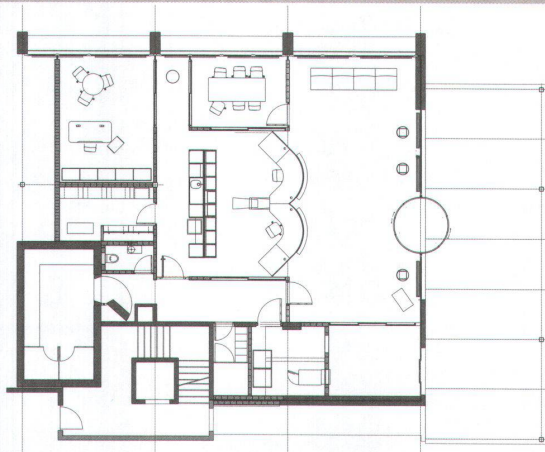
> Kunst-und-Bau: Michel Roggo, Fribourg

> Procedure for conversion project: Direct order

> Procedure for interior fit out: Public tender



^ Lobby with a shining greenish-black wall in the background.



^ Ground plan