

Zeitschrift: Hochparterre : Zeitschrift für Architektur und Design
Herausgeber: Hochparterre
Band: 22 (2009)
Heft: [4]: The essence of architecture : Röthlisberger: swiss quality woodwork

Artikel: Wooden benchmarking
Autor: Pradal, Ariana
DOI: <https://doi.org/10.5169/seals-123782>

Nutzungsbedingungen

Die ETH-Bibliothek ist die Anbieterin der digitalisierten Zeitschriften auf E-Periodica. Sie besitzt keine Urheberrechte an den Zeitschriften und ist nicht verantwortlich für deren Inhalte. Die Rechte liegen in der Regel bei den Herausgebern beziehungsweise den externen Rechteinhabern. Das Veröffentlichen von Bildern in Print- und Online-Publikationen sowie auf Social Media-Kanälen oder Webseiten ist nur mit vorheriger Genehmigung der Rechteinhaber erlaubt. [Mehr erfahren](#)

Conditions d'utilisation

L'ETH Library est le fournisseur des revues numérisées. Elle ne détient aucun droit d'auteur sur les revues et n'est pas responsable de leur contenu. En règle générale, les droits sont détenus par les éditeurs ou les détenteurs de droits externes. La reproduction d'images dans des publications imprimées ou en ligne ainsi que sur des canaux de médias sociaux ou des sites web n'est autorisée qu'avec l'accord préalable des détenteurs des droits. [En savoir plus](#)

Terms of use

The ETH Library is the provider of the digitised journals. It does not own any copyrights to the journals and is not responsible for their content. The rights usually lie with the publishers or the external rights holders. Publishing images in print and online publications, as well as on social media channels or websites, is only permitted with the prior consent of the rights holders. [Find out more](#)

Download PDF: 07.08.2025

ETH-Bibliothek Zürich, E-Periodica, <https://www.e-periodica.ch>

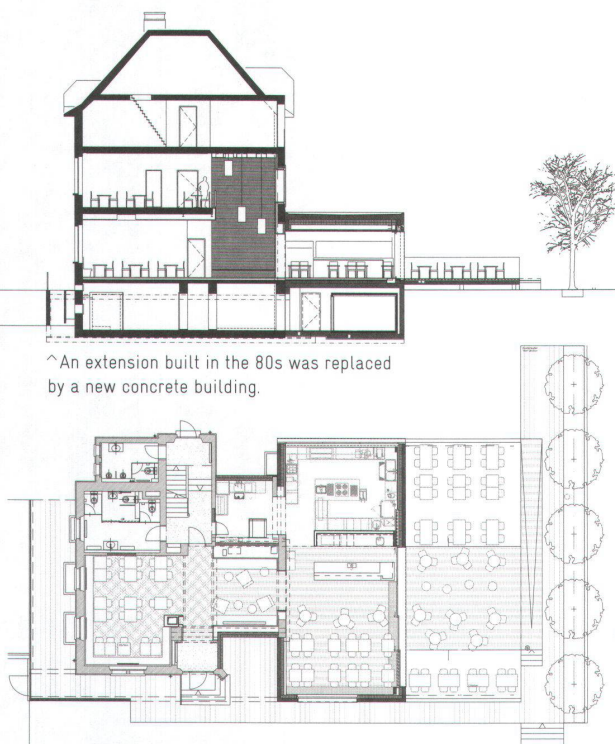


<The "Bellevue" Restaurant in Ittigen: a transition from the old days to modern times.

✓ Railway station style benches as an unobtrusive solution to architectural problems on interfaces.



^ Simple but elegant: "Bellevue" in Ittigen.



^ An extension built in the 80s was replaced by a new concrete building.

<Ground floor layout

WOODEN BENCHMARKING

Röthlisberger does not only produce large, complex objects but also small, exquisite gems. Example: a tower-like wood-clad seating zone at the "Bellevue" restaurant in Ittigen near Bern, made by Röthlisberger for the Zurich architect and designer, Pia Schmid. Part of a major re-building project, this task combines the company's competences in a very small area: interior design and the development of furniture. Contrary to most complex projects, everything is visible at one glance, and yet it is more complicated than it seems at first.

In 2006, Pia Schmid rebuilt the "Bellevue" restaurant. She tore down an extension built in the 80s and replaced it with a new, one-storey concrete construction which docks onto the existing 1900 façade. On the other side, a large wooden terrace has been added. The entrance and the lobby of the restaurant can be found in the interior at a right angle to the interface between the new and the old buildings. The architect has used this interface as a pivotal or reference point, offering an unobstructed view in all directions, even upwards to the first floor restaurant space thanks to an opening in the ceiling. This architectural feature eliminates the need for signage and explains the construction intuitively.

Pia Schmid has designed two benches facing each other for this high room; their backs reach all the way up to the ceiling. The room itself has been turned into a piece of furniture, and the pieces of furniture constitute the room. The benches bring to mind the benches formerly found at train stations. They are made of nailed down wood slats which clearly define the space as a stylish waiting zone. To make the zone more attractive and comfortable, the slats of different widths and lengths have been glazed in three different red tones. There is more to the decorative seats than meets the eye: Pia Schmid accommodated the ventilation system behind them, and the lathes cover differences in the dimensions and the transition from the old to the new building. The "bench room" secretly and elegantly solves various architectural problems and is a skilfully crafted and elegant seating zone. Author: Ariana Pradal, photos: Philipp Rohner

THE BELLEVUE RESTAURANT, 2006

- >Address: Papiermühlestr. 140, Ittigen
- >Client: Gebäudeversicherung Bern
- >Reconstruction, extension and interior design: Architektur & Designbüro Pia Schmid, Zurich
- >Assisted by: Christian Schwyter
- >Bench construction: Röthlisberger Schreinerei, Gümligen
- >Interior design procedure: Direct order
- >Interior fit out procedure: Invited competition