

Zeitschrift: Hochparterre : Zeitschrift für Architektur und Design
Herausgeber: Hochparterre
Band: 22 (2009)
Heft: [4]: The essence of architecture : Röthlisberger: swiss quality woodwork

Artikel: Unique serial specimens
Autor: Pradal, Ariana
DOI: <https://doi.org/10.5169/seals-123781>

Nutzungsbedingungen

Die ETH-Bibliothek ist die Anbieterin der digitalisierten Zeitschriften auf E-Periodica. Sie besitzt keine Urheberrechte an den Zeitschriften und ist nicht verantwortlich für deren Inhalte. Die Rechte liegen in der Regel bei den Herausgebern beziehungsweise den externen Rechteinhabern. Das Veröffentlichen von Bildern in Print- und Online-Publikationen sowie auf Social Media-Kanälen oder Webseiten ist nur mit vorheriger Genehmigung der Rechteinhaber erlaubt. [Mehr erfahren](#)

Conditions d'utilisation

L'ETH Library est le fournisseur des revues numérisées. Elle ne détient aucun droit d'auteur sur les revues et n'est pas responsable de leur contenu. En règle générale, les droits sont détenus par les éditeurs ou les détenteurs de droits externes. La reproduction d'images dans des publications imprimées ou en ligne ainsi que sur des canaux de médias sociaux ou des sites web n'est autorisée qu'avec l'accord préalable des détenteurs des droits. [En savoir plus](#)

Terms of use

The ETH Library is the provider of the digitised journals. It does not own any copyrights to the journals and is not responsible for their content. The rights usually lie with the publishers or the external rights holders. Publishing images in print and online publications, as well as on social media channels or websites, is only permitted with the prior consent of the rights holders. [Find out more](#)

Download PDF: 07.08.2025

ETH-Bibliothek Zürich, E-Periodica, <https://www.e-periodica.ch>

26/27 // INTERIOR DESIGN UNIQUE SERIAL SPECIMENS

Office furniture made to measure is rare. In most cases, too much work is required for the development of such items and the costs for just one individual project are too high to make it worthwhile. It comes as a surprise to find businesses which nonetheless choose this option. Based in Basel, Novartis commissioned the Zurich interior designer, Iria Degen, to develop tailor-made office furniture for their reception centre built by architect Peter Märkli on the expanding company campus. The design project involved furniture for 260 employees, conference rooms of various sizes, cabinets, closets and lounges on four floors covering an area of almost 6,000 square metres. Iria Degen's aim was to develop a furniture range to suit the large, open layout of the building. At the same time, she wanted to make sure that the new workplaces offered a certain degree of privacy to the staff who had previously worked in individual offices. A difficult task, indeed.

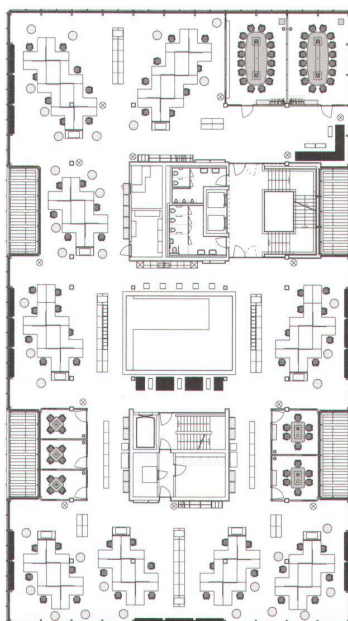
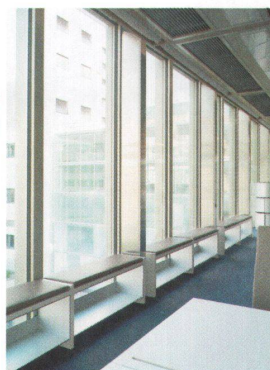
In conjunction with Röthlisberger, the interior designer developed an angular, L-shaped desk made of white plastic boards with two sides of the same length and a movable, integrated partition, which separates the individual workplaces as and when required. Four, six or eight workplaces are arranged diagonally in the room, forming small "islands" which are reminiscent of a cascade of carefully aligned angles. They are framed by cylindrical aluminium containers on wheels which serve as storage cabinets – they, too, are made to measure and were developed with Röthlisberger. Not one single piece of furniture reaches up to the ceiling, so the view across the room is unobstructed. Owing to the interlocked desk arrangement and the storage space in the elements, the room remains open and luxurious, and Peter Märkli's extravagant building can be seen and felt. The building and its furniture merge discretely to form one entity.

Author: Ariana Pradal, photos: Peter Hebeisen

NOVARTIS VISITOR CENTRE CAMPUS, 2006

- > Address: Fabrikstrasse 6, Basel
- > Client: Novartis Pharma, Basel
- > Architecture: Peter Märkli, Zurich
- > Interior design: Iria Degen Interiors, Zurich, www.iriadegen.com
- > Construction/development of office furniture: Röthlisberger Schreinerei, Gümliigen
- > Kunst-und-Bau: Jenny Holzer, USA
- > Interior design procedure: Invited competition
- > Interior fit out procedure: Invited competition

>The interior design picks up the clear shapes of Peter Märkli's construction.



^ Floor layout with workplace islands.



>Privacy with clear vision in the conference rooms.



^ Workplace islands: A movable partition is integrated in the synthetic resin desktop.