

Zeitschrift: Hochparterre : Zeitschrift für Architektur und Design
Herausgeber: Hochparterre
Band: 22 (2009)
Heft: [4]: The essence of architecture : Röthlisberger: swiss quality woodwork

Artikel: Precision in a listed building
Autor: Rodecke, Sebastian
DOI: <https://doi.org/10.5169/seals-123778>

Nutzungsbedingungen

Die ETH-Bibliothek ist die Anbieterin der digitalisierten Zeitschriften auf E-Periodica. Sie besitzt keine Urheberrechte an den Zeitschriften und ist nicht verantwortlich für deren Inhalte. Die Rechte liegen in der Regel bei den Herausgebern beziehungsweise den externen Rechteinhabern. Das Veröffentlichen von Bildern in Print- und Online-Publikationen sowie auf Social Media-Kanälen oder Webseiten ist nur mit vorheriger Genehmigung der Rechteinhaber erlaubt. [Mehr erfahren](#)

Conditions d'utilisation

L'ETH Library est le fournisseur des revues numérisées. Elle ne détient aucun droit d'auteur sur les revues et n'est pas responsable de leur contenu. En règle générale, les droits sont détenus par les éditeurs ou les détenteurs de droits externes. La reproduction d'images dans des publications imprimées ou en ligne ainsi que sur des canaux de médias sociaux ou des sites web n'est autorisée qu'avec l'accord préalable des détenteurs des droits. [En savoir plus](#)

Terms of use

The ETH Library is the provider of the digitised journals. It does not own any copyrights to the journals and is not responsible for their content. The rights usually lie with the publishers or the external rights holders. Publishing images in print and online publications, as well as on social media channels or websites, is only permitted with the prior consent of the rights holders. [Find out more](#)

Download PDF: 07.08.2025

ETH-Bibliothek Zürich, E-Periodica, <https://www.e-periodica.ch>

22/23 // INTERIOR DESIGN

PRECISION IN A LISTED BUILDING

The mansion, situated on Potsdamer Platz, was built by wine merchant Christian Huth in 1913 in the heart of the then vibrant German capital. Until 1989, it was the only intact building on the urban wasteland next to the Berlin wall. In the early 90s, the Berlin Senate decided to allow the Daimler-Benz Group to purchase the southern part of the square and to build. Renzo Piano and other renowned architects were commissioned to build the new quarter. The Huth mansion was integrated in the entire building project to be used by the automotive company for representative purposes.

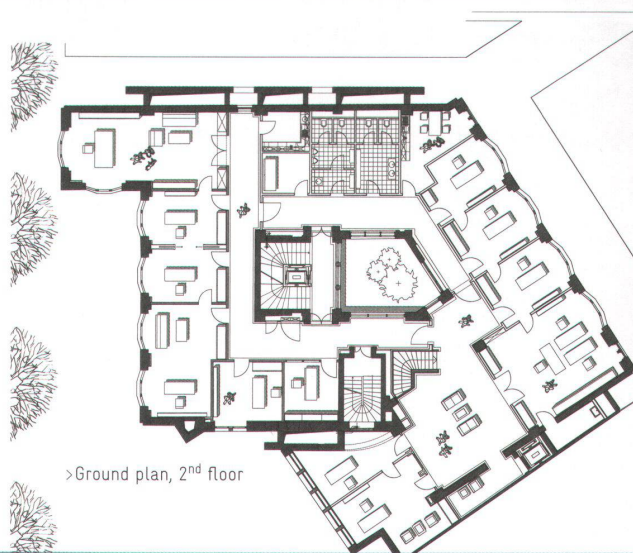
First, the mansion was completely gutted and re-built. The only part left unaltered was the old staircase. The Berlin-based architects, Christine Kreplin-Duwensee and Hubertus Duwensee, were responsible for the interior design of the top floors, and they worked closely with Röthlisberger. Even after eleven years, the fitted teak components exude elegance and are an integral part of the building. The most voluminous addition is a staircase with wall panelling, located in one of the corners and connecting the club and lounge with the offices above. The high wreathed string is enhanced by an elegant, high-precision hand-rail. Unobtrusive shapes have been integrated into the rooms in a most natural way, and yet they serve a purpose. Sliding elements or doors reveal wardrobes, media walls, ventilation systems or bars. The carefully chosen veneer grain enhances the entire structure: the linear grain does not reveal the slightest trace of a fault. High-class design is found all over the mansion. Even closets and doors have been made with greatest care.

Christine Kreplin fondly remembers the reconstruction assignment. She says that her high expectations in terms of design and demand were shared by Peter Röthlisberger. During the production, she spent several weeks in Gümligen to discuss the assembly down to the last joint. Prior to the assembly, all the work was executed by just one company. Without this intensive co-operation the high demands set by the client and the people involved could not have been met.

Author: Sebastian Redecke, photos: Stefan Müller

HUTH MANSION, BERLIN 1997

- >Address: Potsdamer Platz, Berlin
- >Client: Daimler-Benz, Berlin
- >Architecture: Christine Kreplin-Duwensee and Hubertus Duwensee, Berlin
- >Interior design: Co-operation between Röthlisberger Schreinerei, Gümligen, and Glaeser, Baden
- >Interior fit out procedure: Invited competition



>Ground plan, 2nd floor



^Matching doors and paper bins.



^The carefully selected veneer grain adds quality to the entire structure.



^The fitted teak components are an integral part of the historical house.

>Staircase connecting the club and lounge with the offices above.

