

**Zeitschrift:** Helvetia : magazine of the Swiss Society of New Zealand  
**Herausgeber:** Swiss Society of New Zealand  
**Band:** 80 (2014)  
**Heft:** [6]

**Artikel:** Auckland Swiss farm update  
**Autor:** Latham-Zurbruegg, Tanja  
**DOI:** <https://doi.org/10.5169/seals-943975>

### **Nutzungsbedingungen**

Die ETH-Bibliothek ist die Anbieterin der digitalisierten Zeitschriften auf E-Periodica. Sie besitzt keine Urheberrechte an den Zeitschriften und ist nicht verantwortlich für deren Inhalte. Die Rechte liegen in der Regel bei den Herausgebern beziehungsweise den externen Rechteinhabern. Das Veröffentlichen von Bildern in Print- und Online-Publikationen sowie auf Social Media-Kanälen oder Webseiten ist nur mit vorheriger Genehmigung der Rechteinhaber erlaubt. [Mehr erfahren](#)

### **Conditions d'utilisation**

L'ETH Library est le fournisseur des revues numérisées. Elle ne détient aucun droit d'auteur sur les revues et n'est pas responsable de leur contenu. En règle générale, les droits sont détenus par les éditeurs ou les détenteurs de droits externes. La reproduction d'images dans des publications imprimées ou en ligne ainsi que sur des canaux de médias sociaux ou des sites web n'est autorisée qu'avec l'accord préalable des détenteurs des droits. [En savoir plus](#)

### **Terms of use**

The ETH Library is the provider of the digitised journals. It does not own any copyrights to the journals and is not responsible for their content. The rights usually lie with the publishers or the external rights holders. Publishing images in print and online publications, as well as on social media channels or websites, is only permitted with the prior consent of the rights holders. [Find out more](#)

**Download PDF:** 10.12.2025

**ETH-Bibliothek Zürich, E-Periodica, <https://www.e-periodica.ch>**



## Auckland Swiss Farm Update

### The big mystery solved

Only too often do we hear people wondering where the beautiful, large black and white picture is taken, that's hanging up next to the bar at the Auckland Swiss Farm. It is looking a little bit faded now due to the sun and humidity, but considering how old it is, it is in a remarkably good condition. With the help of Yvonne Bühler we have solved the mystery...



The winter scene picture is taken of the picturesque chapel on the Bettmeralp, located on a sun terrace high above the Rhone Valley. The Catholic Church, standing 2000 meters above sea level, is located up on a little hill with a breath taking view of the mountains and the village. Aside from the Matterhorn, several other four-thousand-meter peaks including the Weisshorn and Dom, can be admired in the background. The car-free village of Bettmeralp which is only accessible by a large-car cableway is located in the immediate vicinity of

the impressive Aletsch Glacier, the first UNESCO World Heritage Site of the Alps. The family-friendly summer and winter holiday resort boasts almost 300 sunny days a year.

### So how did this picture end up at the Swiss Farm?

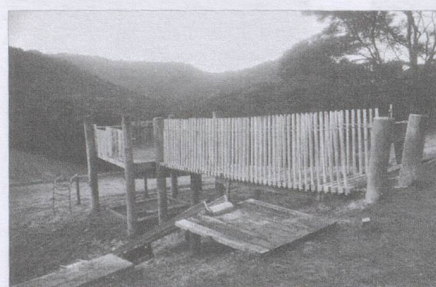
In the 1970's this large picture, which belonged to Swissair, was hanging in their office in Auckland... Swissair shut their office down in the early 1980's and the large print got passed on to the Auckland Swiss Club, during the time when Urs Reinhard was president.

It needed a bigger audience than a private home could offer. So when Marie Therese Melville Schöpfer opened her Cafe in Auckland in 1982, she looked after it and often got asked where that beautiful picture was taken.

The print of the Bettmeralp was hanging there until the Cafe closed and the picture was given to by Oscar Roggen. From 1984 onwards, it was hanging up in his Denture clinic in Hobson Street in Auckland for quite a few years.

After the opening of the extension at the Swiss Farm in 1998 (the 'large hall' as we know it today) Oscar gifted this gorgeous picture of the Bettmeralp in the canton of Valais, back to the Auckland Swiss Club. From the day of the big 'Power Party' in March 2001 it has been hanging there ever since and been admired by hundreds of people.

By Tanja Latham-Zurbrugg



After a lot of hard work and several working bees the Auckland Swiss Farm in Kaukapakapa finally has a new extension to its playground! The new Swing Bridge was christened at our 1. August function and everyone loved it! Young and old ventured over the new slats and enjoyed the "viewing platform" - apparently it's a work-in-progress - so more improvements to come! Thanks very much to Henry and everyone who helped design and build our awesome, new swing bridge!

**Buy it once  
Buy it right**

Looking for superb quality european tools and products?  
We import and sell tools and products for builders, roofers and many more.

**REES** **STUBAI**  
**LONG PLUS** **Nedo**  
**RECTO VERSO** **WUKO**

see our whole sortiment on  
[www.fribesco.co.nz](http://www.fribesco.co.nz)

**FRIBESCO**  
quality european tools

## MB Fine Foods Ltd

trading as



Beautiful NZ made Gingerbread & Irresistible Swiss made treats!



For stock availability please contact  
**Marianne & team on**  
**Phone/Fax 09 416 0601**

[www.gretelsgingerbread.co.nz](http://www.gretelsgingerbread.co.nz)  
[www.mbfinefoods.co.nz](http://www.mbfinefoods.co.nz)  
[info@gretelsgingerbread.co.nz](mailto:info@gretelsgingerbread.co.nz)

*We wish you all  
a healthy and happy 2015*