

Zeitschrift: Helvetia : magazine of the Swiss Society of New Zealand
Herausgeber: Swiss Society of New Zealand
Band: 77 (2011)
Heft: [3]

Artikel: The Ecole Polytechnique Fédérale de Lausanne
Autor: [s.n.]
DOI: <https://doi.org/10.5169/seals-943354>

Nutzungsbedingungen

Die ETH-Bibliothek ist die Anbieterin der digitalisierten Zeitschriften auf E-Periodica. Sie besitzt keine Urheberrechte an den Zeitschriften und ist nicht verantwortlich für deren Inhalte. Die Rechte liegen in der Regel bei den Herausgebern beziehungsweise den externen Rechteinhabern. Das Veröffentlichen von Bildern in Print- und Online-Publikationen sowie auf Social Media-Kanälen oder Webseiten ist nur mit vorheriger Genehmigung der Rechteinhaber erlaubt. [Mehr erfahren](#)

Conditions d'utilisation

L'ETH Library est le fournisseur des revues numérisées. Elle ne détient aucun droit d'auteur sur les revues et n'est pas responsable de leur contenu. En règle générale, les droits sont détenus par les éditeurs ou les détenteurs de droits externes. La reproduction d'images dans des publications imprimées ou en ligne ainsi que sur des canaux de médias sociaux ou des sites web n'est autorisée qu'avec l'accord préalable des détenteurs des droits. [En savoir plus](#)

Terms of use

The ETH Library is the provider of the digitised journals. It does not own any copyrights to the journals and is not responsible for their content. The rights usually lie with the publishers or the external rights holders. Publishing images in print and online publications, as well as on social media channels or websites, is only permitted with the prior consent of the rights holders. [Find out more](#)

Download PDF: 08.08.2025

ETH-Bibliothek Zürich, E-Periodica, <https://www.e-periodica.ch>

The sulphur springs of Yverdon-les-Bains

The springs were probably known and used even before the Roman era, at the time of the Helvetii, when the springs were a sacred place. Documents from the Middle Ages prove the existence of a spa centre as early as 1429, and mention several buildings.



Thermal Centre at Yverdon-les-Bains

By 1728, the authorities decided to have a new spa constructed. The 18th century saw major developments and brilliant success for the town and the spa. Then followed a period of decline; the spa lost its drive and popularity. The buildings were neglected and dilapidated.

In 1897, the local Council decided to reconstruct the spa centre and to renovate its hotel. During the First World War, the number of guests significantly declined again. However, the reputation remained intact, until the 30s.

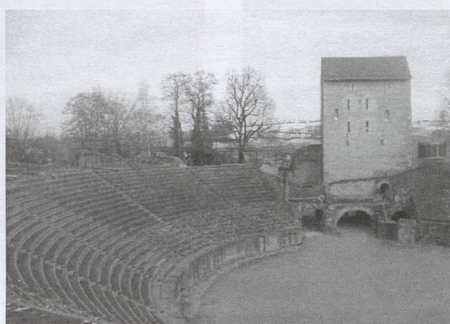
By 1960 the centre was again so dilapidated that it had to be closed. The Municipality purchased the spa, including the neighbouring Château d'Entremonts. Restoration failed twice, but the spa eventually reopened in 1977. Prospects for further thermal springs were successful in 1982, and a new outdoor pool could be added a year later. Today, the spa welcomes more than 1.200 visitors per day.

from the internet

Aventicum

Prosperous commerce, flourishing trade, approximately 20,000 inhabitants, stately mansions and temples protected by a five kilometre long, nearly seven meter tall wall with over 70 towers: This was Aventicum, over 2000 years ago.

Aventicum, which is today called Avenches, was the capital of the Helvetians and of the Roman colony. At that time still located on Lake Murten, it became an economic, spiritual and cultural center thanks to its good traffic links and trade routes.



Amphitheatre of Aventicum

What remains today of the impressively large buildings are the eastern gates and a wall tower, the forum's thermal baths, the amphitheatre with a capacity of up to 16,000 persons, temple ruins as well as the Cigognier sanctuary. The museum displays important finds: the copy of the 33-centimeter-tall golden bust of Emperor Marc Aurel, mosaics, stone inscriptions and numerous artifacts of the Romans' daily life.

From the internet

Aventicum is a popular Schullreise-destination. Especially the well-preserved amphitheatre captures the imagination of most students. When we were there, we saw a lion. A lion? Well, it was a rather small lion, and it followed us around, and it didn't attack us, but purred, and even the most timid student tried hard to capture its attention. Our lion was much more important to my students than all the Roman ruins...

tb

The Ecole Polytechnique Fédérale de Lausanne

The Ecole Polytechnique Fédérale de Lausanne (EPFL) is one of the two prestigious Swiss Federal Institutes of Technology. From its foundation in 1853, EPFL has evolved into a strategic centre of innovation in Switzerland and an internationally recognized institution. Nowadays, it regularly ranks among the best universities in Europe and in the world in academic rankings. Over the years, EPFL has become increasingly international, recruiting the best students and outstanding faculty worldwide. With 112 nationalities on campus, 50% of its faculty and 60% of its PhD students from abroad, no wonder EPFL has been ranked one of the most international campuses by the Times of Higher Education Supplement.



Ecole Polytechnique Fédérale

In addition to its commitment to high standards in education and research, EPFL strongly supports technology transfer and the creation of new enterprises, particularly through its on-campus Science Park, which hosts over 100 companies, plus about 15 start-ups every year.

EPFL delivers highly regarded degrees and its graduates enjoy excellent international or domestic employment opportunities. Not surprisingly, 92% of them find a position within 6 months of their graduation.