

Zeitschrift: Helvetia : magazine of the Swiss Society of New Zealand
Herausgeber: Swiss Society of New Zealand
Band: 71 (2005)
Heft: [1]

Artikel: Berta's mountain house
Autor: [s.n.]
DOI: <https://doi.org/10.5169/seals-945377>

Nutzungsbedingungen

Die ETH-Bibliothek ist die Anbieterin der digitalisierten Zeitschriften auf E-Periodica. Sie besitzt keine Urheberrechte an den Zeitschriften und ist nicht verantwortlich für deren Inhalte. Die Rechte liegen in der Regel bei den Herausgebern beziehungsweise den externen Rechteinhabern. Das Veröffentlichen von Bildern in Print- und Online-Publikationen sowie auf Social Media-Kanälen oder Webseiten ist nur mit vorheriger Genehmigung der Rechteinhaber erlaubt. [Mehr erfahren](#)

Conditions d'utilisation

L'ETH Library est le fournisseur des revues numérisées. Elle ne détient aucun droit d'auteur sur les revues et n'est pas responsable de leur contenu. En règle générale, les droits sont détenus par les éditeurs ou les détenteurs de droits externes. La reproduction d'images dans des publications imprimées ou en ligne ainsi que sur des canaux de médias sociaux ou des sites web n'est autorisée qu'avec l'accord préalable des détenteurs des droits. [En savoir plus](#)

Terms of use

The ETH Library is the provider of the digitised journals. It does not own any copyrights to the journals and is not responsible for their content. The rights usually lie with the publishers or the external rights holders. Publishing images in print and online publications, as well as on social media channels or websites, is only permitted with the prior consent of the rights holders. [Find out more](#)

Download PDF: 18.08.2025

ETH-Bibliothek Zürich, E-Periodica, <https://www.e-periodica.ch>

Berta's Mountain House

Twenty years ago Berta had to promise Keith that if he bought the Mountain House they would stay for two years and then move on. Things have changed, but Berta stays on. Berta was the third youngest child of twelve, born above Burg, Schwyz. She had a fascination with the Tourism Industry and wanted to learn languages. This brought her to Canada and America just after she turned eighteen. After a wonderful twelve months she returned to Switzerland. Whilst she liked Switzerland it was too small for her and she wanted to have just one more trip around the world. New Zealand was half way point and a good place to stop. This was now thirty years ago! Here she met her future husband-to-be Keith Anderson at Dawson Falls, where they married and remained for the next ten years. Heidi and Hans-Peter were born and both grew up in the hearty mountain air. The Andersons sold Dawson Falls and bought the Mountain House in 1985 where they have lived ever since.

The Mountain House is an alpine restaurant with accommodation, nestled on the slopes of the beautiful Mt Egmont/Taranaki in the Egmont National Park. It was established in 1899, one year before the National Park was formed.

The Mountain House has ten rooms. There is an inviting sauna and spa pool



The Mountain House with Mt Egmont/Taranaki behind

to ease wary muscles after a long walk. The a la carte restaurant features many game food specialties as well as large T-Bones and Swiss dishes such as Fladli soup, Spatzli and Black Forest Gateaux. Berta is the main chef, well assisted by a team of twelve staff. The Mountain House is open seven days a week from 7.00am until late, 365 days of the year. In the summer time many visitors from overseas will enjoy the beautiful walks spread around the National Park. A trip to the summit of 2518 metres is an eight hour experience on a fine day, with magical views over the ring plane of Taranaki to the South Island. On a bad day it can turn into an ordeal of life and death as the records of 61 deaths on the mountain have shown. Winter time the surrounds



Berta Anderson, who greets you with friendly hospitality, at either the Mountain House or Anderson's alpine lodge

Unique Adventures

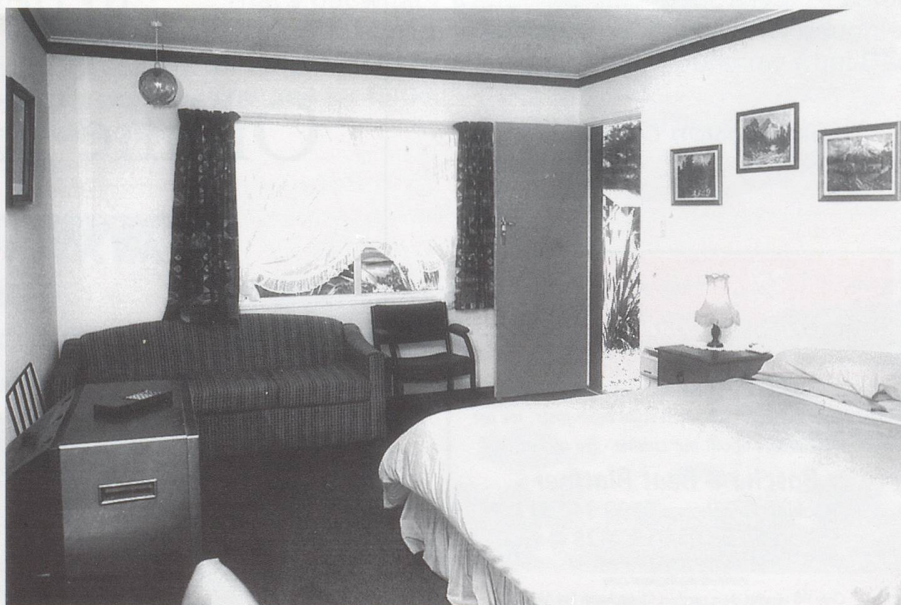
South America at its best

- Amazing Patagonia
- Ecuador Culture
- Galapagos Wildlife
- Kayak & Rafting Peru
- Mayan Ruins & Jungles

Great Little Trips

For more info call 0800 874748
www.southernexposuretours.co.nz

Southern Exposure Tours



The Motel Units

change into a snowy wonderland, the skifield just up the road attracting hundreds of snow seekers.

Berta also operates a bed and breakfast at the Anderson's Alpine Lodge. The beautiful Swiss Log Chalet is just at the edge of the National Park. Here the view is stunning and the setting tranquil with many graceful rimus and kahikatea adjoining a big piece of native bush. But on February 1, 2003, their mountain idyll was shattered when a Swiss tourist strayed on the wrong side of Pembroke Road. His van smashed head-on into Keith Anderson's trademark light blue Mini. Keith was cut from the wreckage but died on the way to hospital. Keith will be remembered for many things. As a landscape oil painter he leaves behind a grand legacy in his paintings. Soon after Keith's death it became evident to his family that his life story and especially his art work should be preserved. A book is now at the printers and it is Berta's hope that the book will touch the readers and make them smile. She would like to share the paintings with all who knew Keith - and with anyone else who has ever loved a mountain.

Despite the toughest of years, Berta has no plans to leave the Mountain House. She regards living in a National Park as a privilege, not to be given up lightly. At the same time she knows more than most not to try to guess what the future holds.

The best way to
predict your future is
to create it.

Alan Kay.

FITTED BED SHEETS

towelling stretch, from Switzerland

Sizes: Single - Queen - King

Colours: white - cream - yellow
- cactus pink - light blue - royal
- burgundy

Ideal for presents

Ueli and Ruth Baumberger
RD 4 Hamilton

Ph/Fax 07 829 5886

ulricbaumberger@hotmail.com



*Anderson's Alpine lodge... a beautiful Swiss Log Chalet
at the edge of the National Park.*

Grüetzi Mitanand!

For warm, personal advice from an
experienced, professional consultant,
see Silvana Gottini

I have recently returned to NZ after 8 years
in Latin America & Asia. With Swiss & Austrian
parentage, I am fluent in German and Spanish and
looking forward to helping with your business trips, visits
to relatives or adventures into the unknown!

Es würd mi freua von Euch z'ghöra

Silvana@motuekaunitedtravel.co.nz
Phone 03 5281330 or 0800 874 748


United Travel



Incorporating Domestic &
Commercial Work
Specialists in Fabric & Leather
Upholstery

Also Deep Diamond Buttoning
All Furniture Re-Upholstery

Swisscraft Ltd

Manager: **Herbert Staheli**

Showroom: 33-39 Colombo St

Frankton-Hamilton

Call us

Phone 07 8477 220

Fax 07 8473 039

Swiss and German Delicatessen

Munz Chocolates

Toggenburger Kagi fretli

Hero Preserves and Roesti

Nowka Sauerkraut, Rotkraut,
Gurken, Senfgurken, Sellerie Salad

Herring in tin

Organic Bread

Pumpernickel

Marzipan

Bahlsen Biscuits

Please ask for our Price List

Impex

INTERNATIONAL TRADING LIMITED
FINE QUALITY PRODUCTS

Ph 09 407 4277 - Fax 09 407 4278

Free Fax 0800 4SWISS (0800 479 477)

email: impex@xtra.co.nz

PO Box 528, 13a Sammaree Pl, Kerikeri