

**Zeitschrift:** Helvetia : magazine of the Swiss Society of New Zealand  
**Herausgeber:** Swiss Society of New Zealand  
**Band:** 69 (2003)  
**Heft:** [8]

**Rubrik:** Children's page : where does a hurricane begin?

### **Nutzungsbedingungen**

Die ETH-Bibliothek ist die Anbieterin der digitalisierten Zeitschriften auf E-Periodica. Sie besitzt keine Urheberrechte an den Zeitschriften und ist nicht verantwortlich für deren Inhalte. Die Rechte liegen in der Regel bei den Herausgebern beziehungsweise den externen Rechteinhabern. Das Veröffentlichen von Bildern in Print- und Online-Publikationen sowie auf Social Media-Kanälen oder Webseiten ist nur mit vorheriger Genehmigung der Rechteinhaber erlaubt. [Mehr erfahren](#)

### **Conditions d'utilisation**

L'ETH Library est le fournisseur des revues numérisées. Elle ne détient aucun droit d'auteur sur les revues et n'est pas responsable de leur contenu. En règle générale, les droits sont détenus par les éditeurs ou les détenteurs de droits externes. La reproduction d'images dans des publications imprimées ou en ligne ainsi que sur des canaux de médias sociaux ou des sites web n'est autorisée qu'avec l'accord préalable des détenteurs des droits. [En savoir plus](#)

### **Terms of use**

The ETH Library is the provider of the digitised journals. It does not own any copyrights to the journals and is not responsible for their content. The rights usually lie with the publishers or the external rights holders. Publishing images in print and online publications, as well as on social media channels or websites, is only permitted with the prior consent of the rights holders. [Find out more](#)

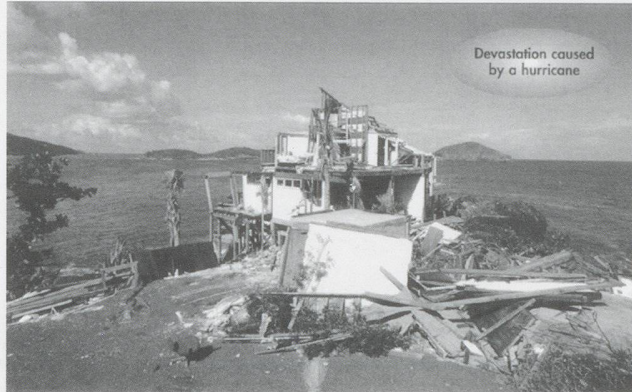
**Download PDF:** 18.04.2026

**ETH-Bibliothek Zürich, E-Periodica, <https://www.e-periodica.ch>**

# Children's Page

## Where does a hurricane begin?

A hurricane is a powerful, swirling storm that begins over a warm sea. Hurricanes form in waters near the equator and then they move towards the Poles. The winds of a hurricane swirl around a calm central zone called the eye, surrounded



by a band of tall, dark clouds called the eyewall. The eye is usually about 16 to 32km (10 to 20 miles) in diameter

and is free of rain and large clouds.

In the eyewall, large changes in pressure create the hurricane's strongest winds.

These winds can reach nearly 320km (200 miles) per hour. Damaging winds may extend 400km (250 miles) from the eye.

### FACT FILE:

*Approximately 85 hurricanes, typhoons and tropical cyclones occur in a year throughout the world. Hurricanes are most common during the summer and early autumn.*



### A REMINDER - SWISS

is affiliated to the Qantas Frequent Flyer Programme

### SWISS INTRODUCE AIRBUS A340-313 TO ITS LONG-HAUL FLEET

The end of June saw **Swiss International Air Lines** take delivery of an A340-313 Airbus for its long haul fleet. The A340 airbus offers great comfort, good ecological credentials, high cost efficiency and state-of-the-art aircraft technology and operation. The seat configuration will consist of First, Business, Economy Class, with Economy Class facilities including personal inflight entertainment system with a nine inch screen (biggest in the industry) and full audio and video on demand. Video

games, short message services and phones on every seat. Seat pitch in Economy Class is 32-33 inches which is slightly higher than the industry standard.

Return Economy Class fares from New Zealand to Switzerland/Europe start at NZD2629 per person. **SWISS is affiliated to the Qantas Frequent Flyer Programme.** For further information on **SWISS** product or airfares, please call

swiss



Swiss  
International  
Air Lines

Level 6  
18 Shortland St  
Auckland

Ph (09) 977 2238  
Fax (09) 977 2235  
Website [www.swissairlines.com](http://www.swissairlines.com)  
Email [swiss@walshegroup.co.nz](mailto:swiss@walshegroup.co.nz)